

# ***Stainless Steel Hanging Fume Arm***

---

*Please read and save these instructions. Read carefully before attempting to assemble, install, operate or maintain the product described. The continual observance of these procedures will help increase your production and extend the life of the equipment.*

---



## **Operations manual Stainless Steel Hanging Fume Arm**



# ***Stainless Steel Hanging Fume Arm***

---

*Please read and save these instructions. Read carefully before attempting to assemble, install, operate or maintain the product described. The continual observance of these procedures will help increase your production and extend the life of the equipment.*

---

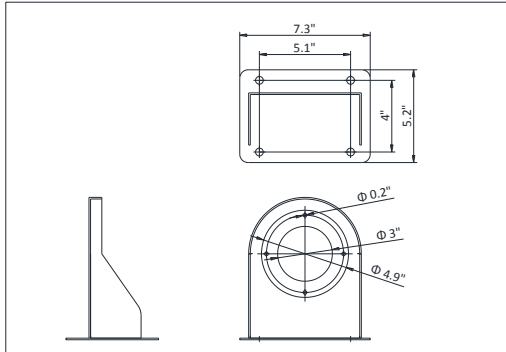
## **Table of Contents**

Wall Mount Bracket Specifications.....	2
Wall Mount Bracket Installation.....	3
Telescopic spring Installation.....	4
Fume Arm Swivel Base Installation.....	5
Maintenance.....	5
This increases the force on the friction discs.....	5
Spark Protector Assembly (Optional).....	6
Parts List.....	8
Contact Information.....	9

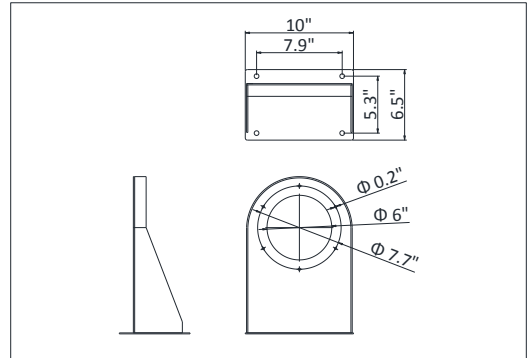
# Stainless Steel Hanging Fume Arm

Please read and save these instructions. Read carefully before attempting to assemble, install, operate or maintain the product described. The continual observance of these procedures will help increase your production and extend the life of the equipment.

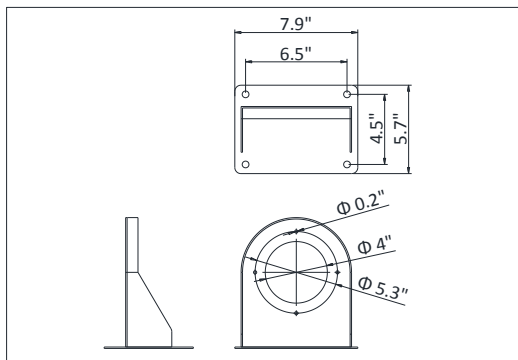
## Wall Mount Bracket Specifications



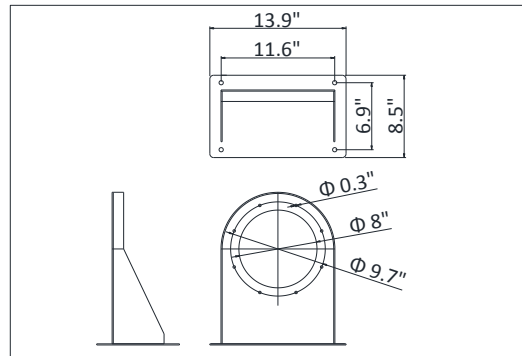
3" Wall Bracket



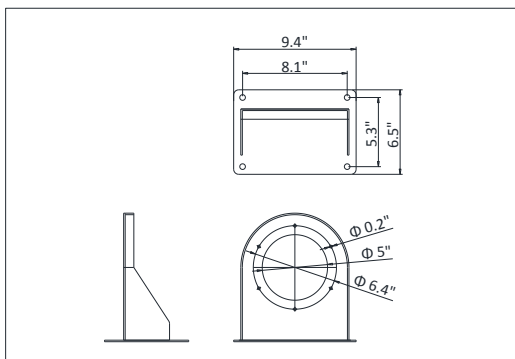
6" Wall Bracket



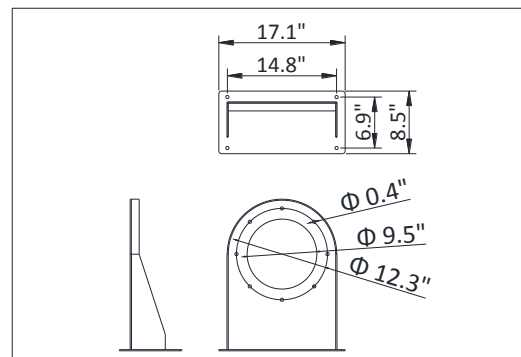
4" Wall Bracket



8" Wall Bracket



5" Wall Bracket



10" Wall Bracket

# Stainless Steel Hanging Fume Arm

*Please read and save these instructions. Read carefully before attempting to assemble, install, operate or maintain the product described. The continual observance of these procedures will help increase your production and extend the life of the equipment.*

## Wall Mount Bracket Installation



1. Fume arm swivel base, Duct Collar, Wall mount bracket.



3. Insert the Duct Collar through the wall mount bracket from the bottom side.



2. Using the appropriate hardware, secure the wall mount bracket using the pre-drilled holes in the bracket.

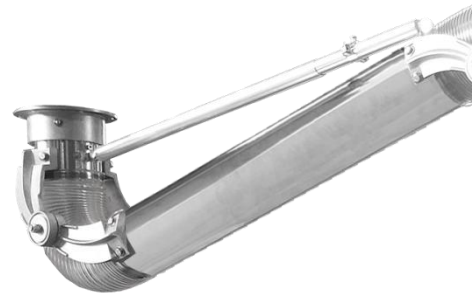


4. Install the fume arm swivel base, with the hardware supplied with the arm, from the bottom side. This secures the flanged pipe into the wall mount bracket.

# Stainless Steel Hanging Fume Arm

Please read and save these instructions. Read carefully before attempting to assemble, install, operate or maintain the product described. The continual observance of these procedures will help increase your production and extend the life of the equipment.

## Telescopic spring Installation



1. Take out the (1) Telescopic spring.  
Caution: The telescopic spring is already extended to a specific length. Any adjustment to the clamp shown before being installed on the arm, can result in recoil of the spring. This may cause injury.

3. Attach the (1) Telescopic Spring to the T-shaped brackets, as shown in Figure, using (2) 1/4" x 3/4" bolts and (2) 1/4" Hex Lock Nuts (provided).

**⚠ WARNING: To reduce the risk of accidental injury, do not adjust the clamp on the telescopic spring before installation.**



2. T shaped bracket  
Locate the T shaped brackets on the tube and base (2).

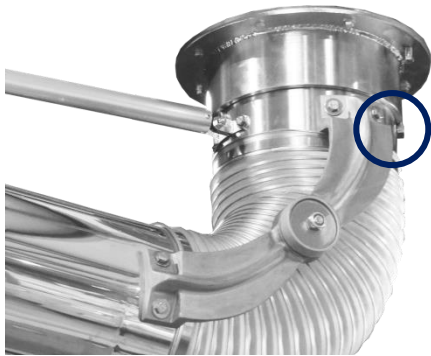
# Stainless Steel Hanging Fume Arm

Please read and save these instructions. Read carefully before attempting to assemble, install, operate or maintain the product described. The continual observance of these procedures will help increase your production and extend the life of the equipment.

## Fume Arm Swivel Base Installation



When you mount it, you have to make sure that the arm can swivel where it needs to.



The stop pin has to be in the correct orientation, so the arm can rotate from side to side.

## Maintenance

- Arm does not turn with ease:



Apply a medium duty grease to grease fitting on side of swivel base. Continue to grease at regular intervals to ensure free movement of arm.

- Hood or arm will not stay in the required position:



Adjust the External Joints by tightening the bolts with (2) wrenches.



This increases the force on the friction discs.

# Stainless Steel Hanging Fume Arm

*Please read and save these instructions. Read carefully before attempting to assemble, install, operate or maintain the product described. The continual observance of these procedures will help increase your production and extend the life of the equipment.*

## Spark Protector Assembly (Optional)



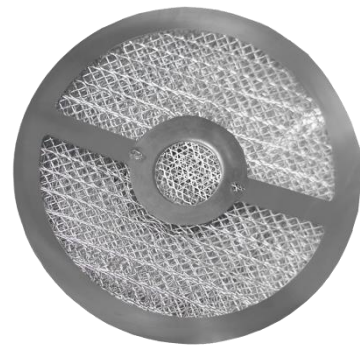
1. Loosing screws and uninstall the light cover and fixing plate.



4. Put the aluminum mesh to the top of aluminum mesh.  
(Total three layers)



2. Take out aluminum mesh.



5. Put the (3) aluminum mesh to the top of spark protector fixing plate.



3. Put the aluminum mesh to the top of aluminum mesh.  
(With different directions)



6. Take out hood and light cover.

# Stainless Steel Hanging Fume Arm

*Please read and save these instructions. Read carefully before attempting to assemble, install, operate or maintain the product described. The continual observance of these procedures will help increase your production and extend the life of the equipment.*



7. Attach the spark protector and light cover to the plate, as shown in Figure, using (2) 3/16" x 1 - 1/2" screws and (2) 3/16" x OD12 x 1t washers.



8. Complete.

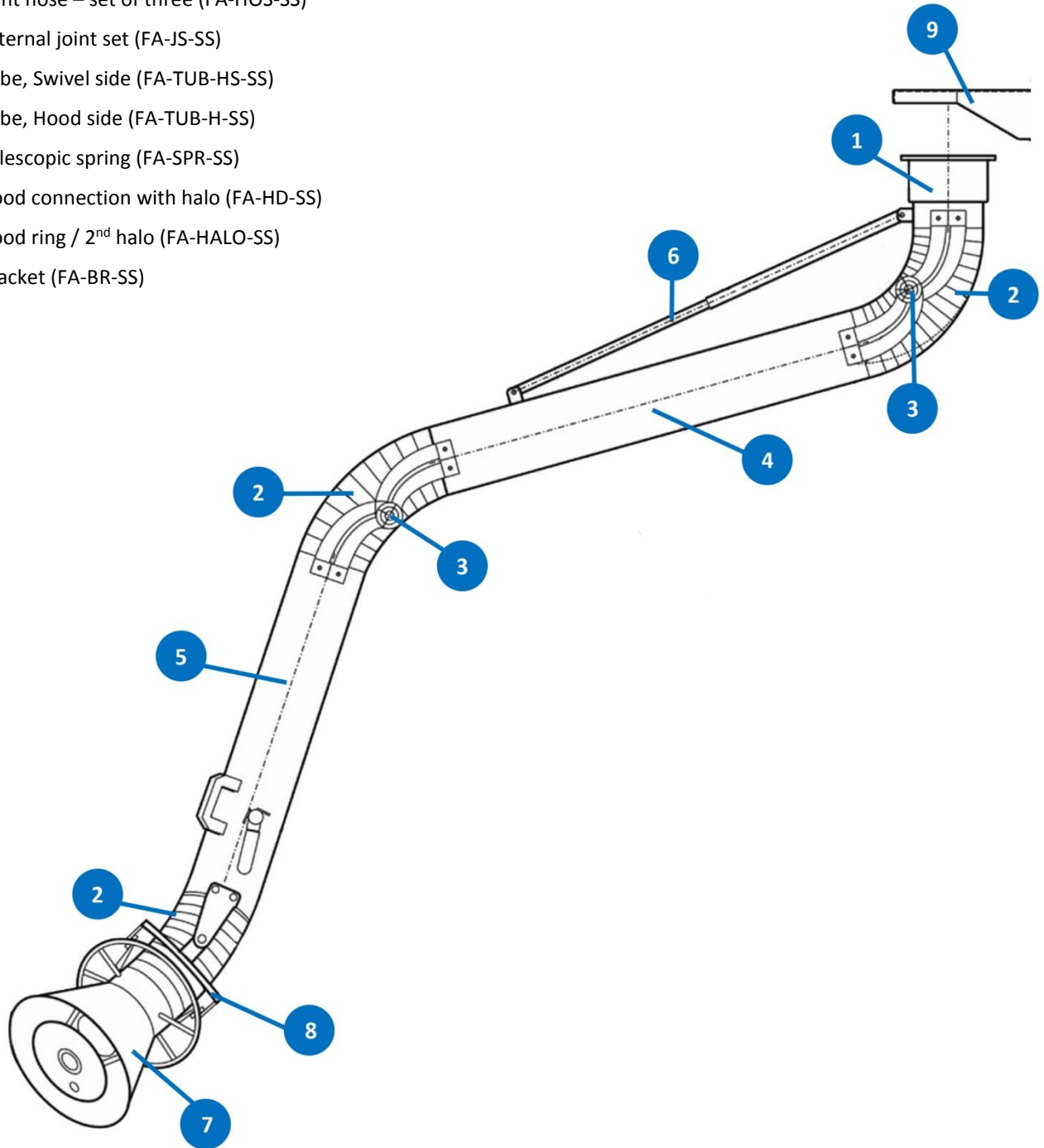


# Stainless Steel Hanging Fume Arm

Please read and save these instructions. Read carefully before attempting to assemble, install, operate or maintain the product described. The continual observance of these procedures will help increase your production and extend the life of the equipment.

## Parts List

1. Swivel base (FA-RB-SS)
2. Joint hose – set of three (FA-HOS-SS)
3. External joint set (FA-JS-SS)
4. Tube, Swivel side (FA-TUB-HS-SS)
5. Tube, Hood side (FA-TUB-H-SS)
6. Telescopic spring (FA-SPR-SS)
7. Hood connection with halo (FA-HD-SS)
8. Hood ring / 2<sup>nd</sup> halo (FA-HALO-SS)
9. Bracket (FA-BR-SS)



# ***Stainless Steel Hanging Fume Arm***

---

*Please read and save these instructions. Read carefully before attempting to assemble, install, operate or maintain the product described. The continual observance of these procedures will help increase your production and extend the life of the equipment.*

---

## **Contact Information**

Industrial Air Purification, Inc.

580 Technology Drive

Sparta, TN 38583

Tel : (931) 372-0050

E-mail : [Sales@IAP-AirProducts.com](mailto:Sales@IAP-AirProducts.com)

Website : [www.IAP-AirProducts.com](http://www.IAP-AirProducts.com)