

Hanging Fume Arm

Please read and save these instructions. Read carefully before attempting to assemble, install, operate or maintain the product described. The continual observance of these procedures will help increase your production and extend the life of the equipment.



Operations manual Hanging Fume Arm



Hanging Fume Arm

Please read and save these instructions. Read carefully before attempting to assemble, install, operate or maintain the product described. The continual observance of these procedures will help increase your production and extend the life of the equipment.

Table of Contents

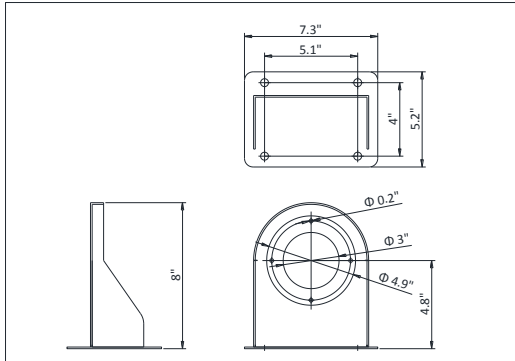
Wall Mount Bracket Specifications.....	3
Wall Mount Bracket Installation.....	4
Telescopic spring Installation.....	5
Fume Arm Swivel Base Installation.....	6
Maintenance.....	6
Light Kits Assembly (Optional).....	7
Spark Protector Assembly (Optional).....	10
Parts List.....	12
Contact Information.....	13



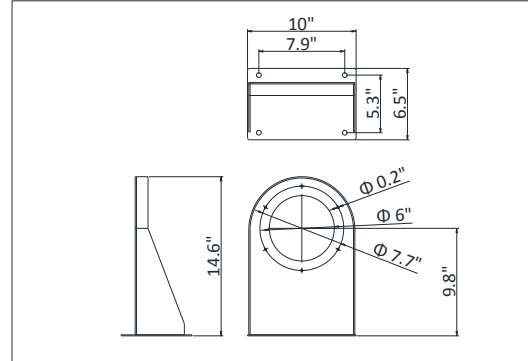
Hanging Fume Arm

Please read and save these instructions. Read carefully before attempting to assemble, install, operate or maintain the product described. The continual observance of these procedures will help increase your production and extend the life of the equipment.

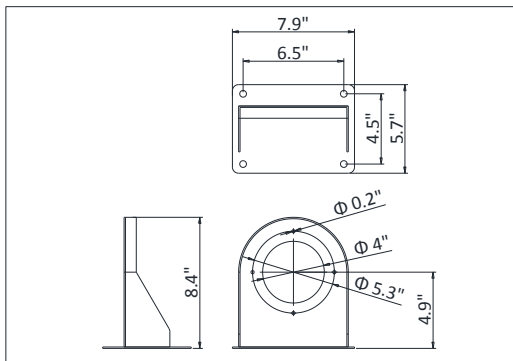
Wall Mount Bracket Specifications



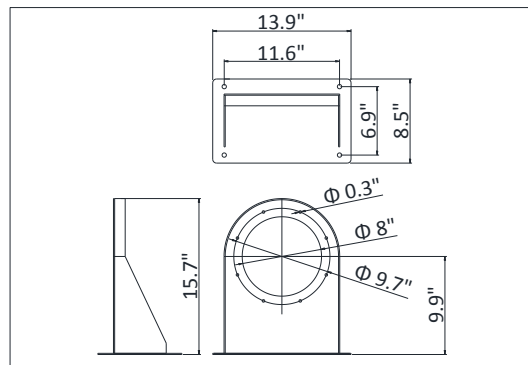
3" Wall Bracket



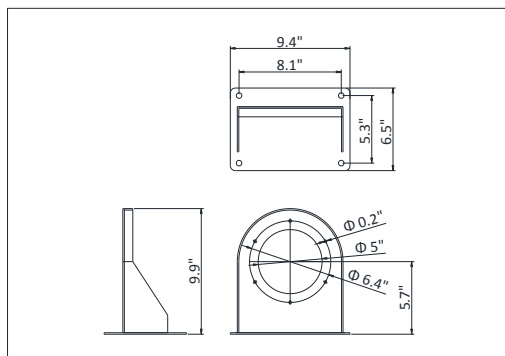
6" Wall Bracket



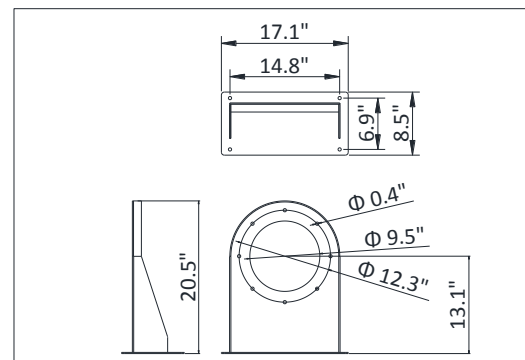
4" Wall Bracket



8" Wall Bracket



5" Wall Bracket



10" Wall Bracket

Hanging Fume Arm

Please read and save these instructions. Read carefully before attempting to assemble, install, operate or maintain the product described. The continual observance of these procedures will help increase your production and extend the life of the equipment.

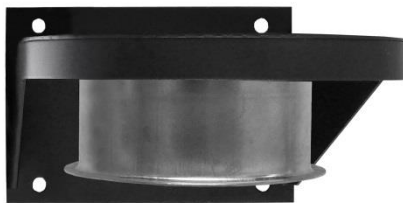
Wall Mount Bracket Installation



1. Fume arm swivel base, Flanged pipe, Wall mount bracket.



3. Insert the flanged pipe through the wall mount bracket from the bottom side.



2. Using the appropriate hardware, secure the wall mount bracket using the pre-drilled holes in the bracket.



4. Install the fume arm swivel base, with the hardware supplied with the arm, from the bottom side. This secures the flanged pipe into the wall mount bracket.

Hanging Fume Arm

Please read and save these instructions. Read carefully before attempting to assemble, install, operate or maintain the product described. The continual observance of these procedures will help increase your production and extend the life of the equipment.

Telescopic spring Installation



1. Take out the (1) Telescopic spring.
Caution: The telescopic spring is already extended to a specific length. Any adjustment to the clamp shown before being installed on the arm, can result in recoil of the spring. This may cause injury.
3. Attach the (1) Telescopic Spring to the T-shaped brackets, as shown in Figure, using (2) 1/4" x 3/4" bolts and (2) 1/4" Hex Lock Nuts (provided).

⚠ WARNING: To reduce the risk of accidental injury, do not adjust the clamp on the telescopic spring before installation.



2. T shaped bracket
Locate the T shaped brackets on the tube and base (2).

Hanging Fume Arm

Please read and save these instructions. Read carefully before attempting to assemble, install, operate or maintain the product described. The continual observance of these procedures will help increase your production and extend the life of the equipment.

Fume Arm Swivel Base Installation



When you mount it, you have to make sure that the arm can swivel where it needs to.



The stop pin has to be in the correct orientation, so the arm can rotate from side to side.

Maintenance

- Arm does not turn with ease:



Apply a medium duty grease to grease fitting on side of swivel base. Continue to grease at regular intervals to ensure free movement of arm.

- Hood or arm will not stay in the required position:



Adjust the External Joints by tightening the bolts with (2) wrenches. Ensure both sides are tightened the same.

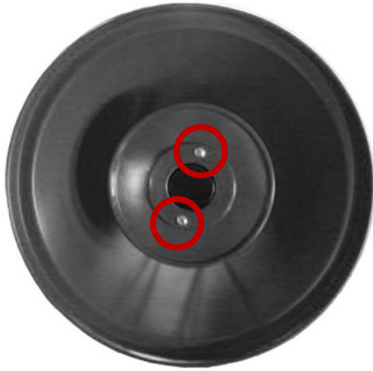


This increases the force on the friction discs.

Hanging Fume Arm

Please read and save these instructions. Read carefully before attempting to assemble, install, operate or maintain the product described. The continual observance of these procedures will help increase your production and extend the life of the equipment.

Light Kits Assembly (Optional)



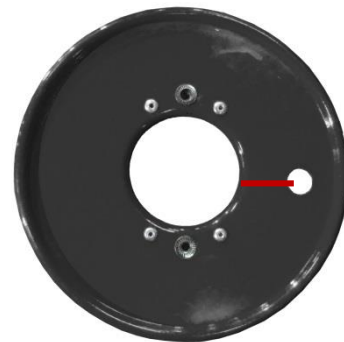
1. Loosening screws.



4. Take down the light frame.



2. Uninstall the light cover and fixing plate.



5. Measure 23mm from the hole center to the edge (Red line).



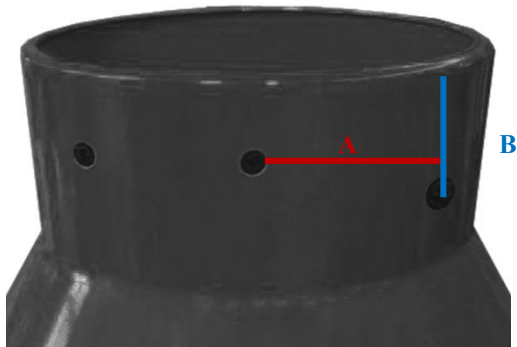
3. Uninstall the hose then hood also.



6. Drill a hole for Dia. 12mm.

Hanging Fume Arm

Please read and save these instructions. Read carefully before attempting to assemble, install, operate or maintain the product described. The continual observance of these procedures will help increase your production and extend the life of the equipment.



7. Distance between hole A and B as below.

	Red Line (A)	Blue Line (B)
Ø 5"	50mm	31mm
Ø 6"	65mm	39mm
Ø 8"	70mm	65mm



10. Install the working light to the base and plate.



8. Drill a hole for Dia. 13.5mm.



11. Prepare for the switch.



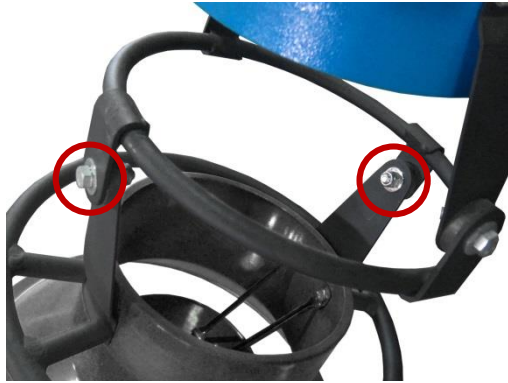
9. Install the light frame and the cable cover.



12. Install the switch on the hood.

Hanging Fume Arm

Please read and save these instructions. Read carefully before attempting to assemble, install, operate or maintain the product described. The continual observance of these procedures will help increase your production and extend the life of the equipment.



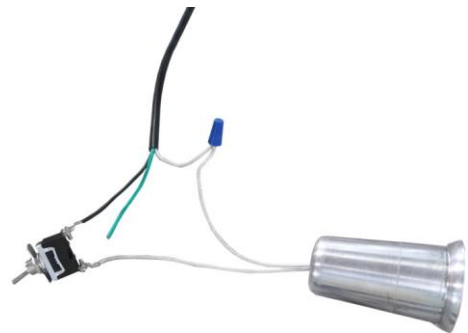
13. Install the hood on the arm.



16. Install the cord.



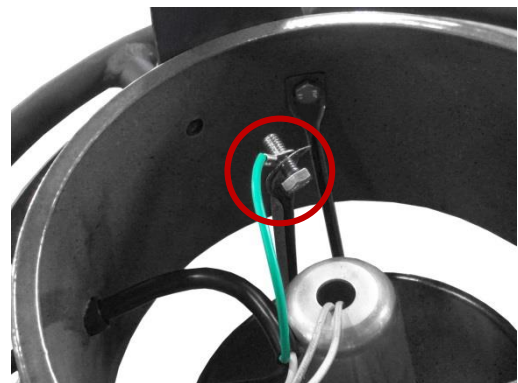
14. Install the cord.



17. Connect the light and the cord.



15. Install the cord.

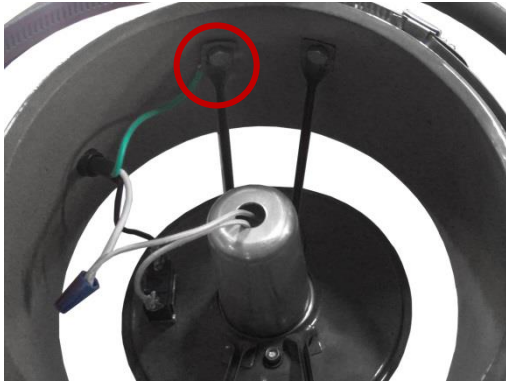


18. Connect the green cord to the light frame.

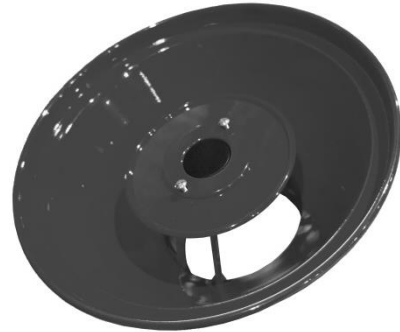
Hanging Fume Arm

Please read and save these instructions. Read carefully before attempting to assemble, install, operate or maintain the product described. The continual observance of these procedures will help increase your production and extend the life of the equipment.

Spark Protector Assembly (Optional)



19. Then install on the hood.



1. Loosening screws.



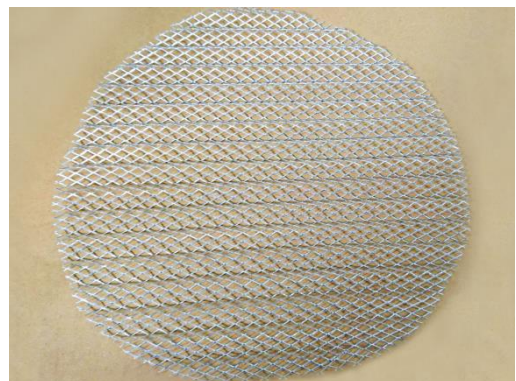
20. Install the hose.



2. Uninstall the light cover and fixing plate.



21. Complete.



3. Take out aluminum mesh.

Hanging Fume Arm

Please read and save these instructions. Read carefully before attempting to assemble, install, operate or maintain the product described. The continual observance of these procedures will help increase your production and extend the life of the equipment.



4. Put the aluminum mesh to the top of aluminum mesh.
(With different directions)



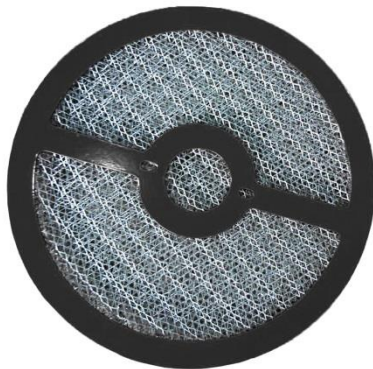
7. Take out hood and light cover.



5. Put the aluminum mesh to the top of aluminum mesh.
(Total three layers)



8. Attach the spark protector and light cover to the plate, as shown in Figure, using (2) 3/16" x 1 - 1/2" screws and (2) 3/16" x OD12 x 1t washers.



6. Put the (3) aluminum mesh to the top of spark protector fixing plate.



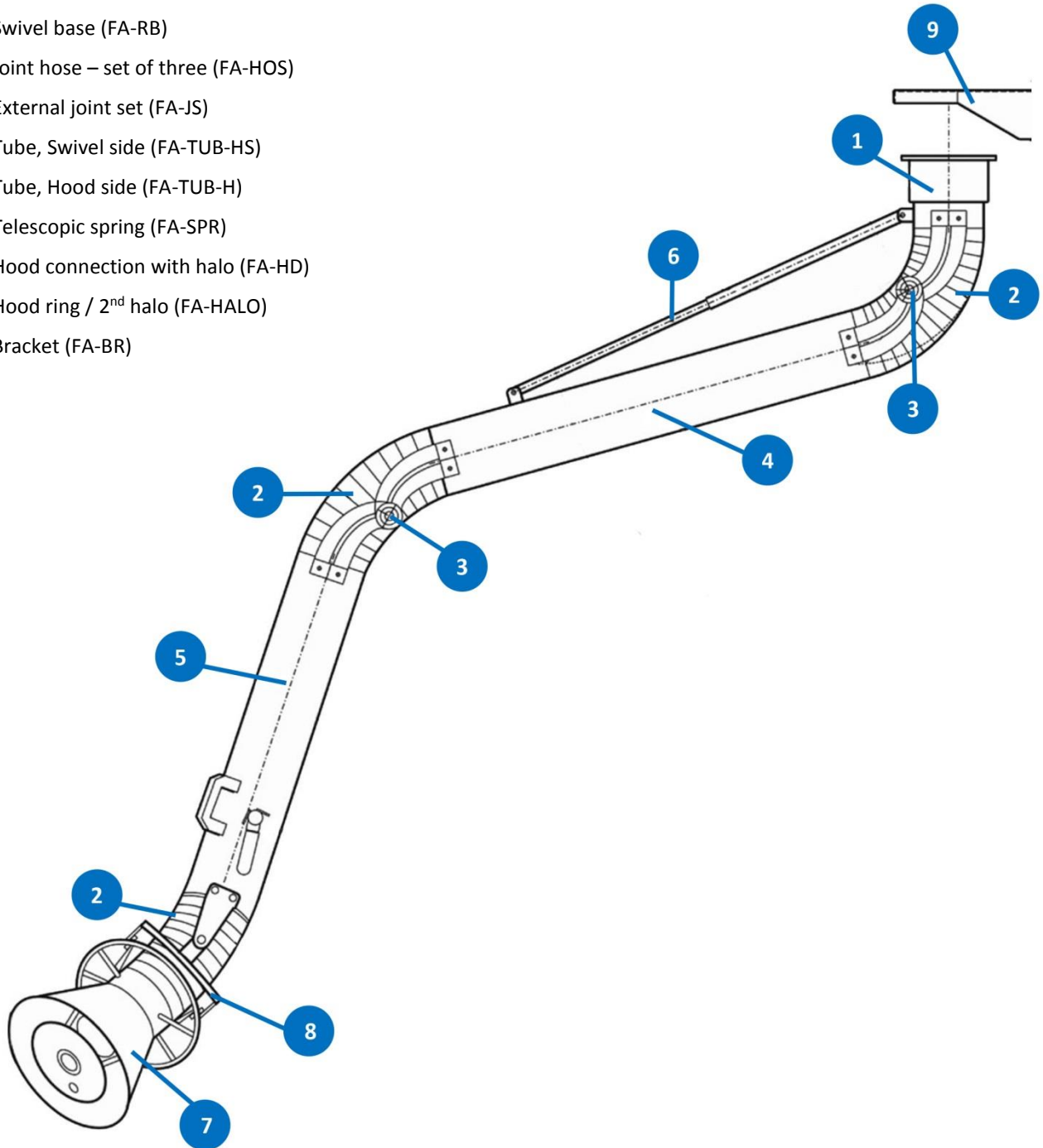
9. Complete.

Hanging Fume Arm

Please read and save these instructions. Read carefully before attempting to assemble, install, operate or maintain the product described. The continual observance of these procedures will help increase your production and extend the life of the equipment.

Parts List

1. Swivel base (FA-RB)
2. Joint hose – set of three (FA-HOS)
3. External joint set (FA-JS)
4. Tube, Swivel side (FA-TUB-HS)
5. Tube, Hood side (FA-TUB-H)
6. Telescopic spring (FA-SPR)
7. Hood connection with halo (FA-HD)
8. Hood ring / 2nd halo (FA-HALO)
9. Bracket (FA-BR)



Hanging Fume Arm

Please read and save these instructions. Read carefully before attempting to assemble, install, operate or maintain the product described. The continual observance of these procedures will help increase your production and extend the life of the equipment.

Contact Information

Industrial Air Purification, Inc.

580 Technology Drive

Sparta, TN 38583

Tel : (931) 372-0050

E-mail : Sales@IAP-AirProducts.com

Website : www.IAP-AirProducts.com

