

Extraction Fans

Please read and save these instructions. Read carefully before attempting to assemble, install, operate or maintain the product described. The continual observance of these procedures will help increase your production and extend the life of the equipment.



Operations manual



Extraction Fans

Please read and save these instructions. Read carefully before attempting to assemble, install, operate or maintain the product described. The continual observance of these procedures will help increase your production and extend the life of the equipment.

Table of Contents

Parts Description.....	2
Specifications.....	3
Dimensions (in inches)	3
Safety Instructions of Extractions Fans	4
Electrical Installation	5
Electric Circuit Diagram	6
Assembly.....	10
Parts Diagram.....	12
Parts List	13
Contact Information	14

Extraction Fans

Please read and save these instructions. Read carefully before attempting to assemble, install, operate or maintain the product described. The continual observance of these procedures will help increase your production and extend the life of the equipment.

Parts Description

Refer to the following figures and descriptions to better understand the instructions in this manual.



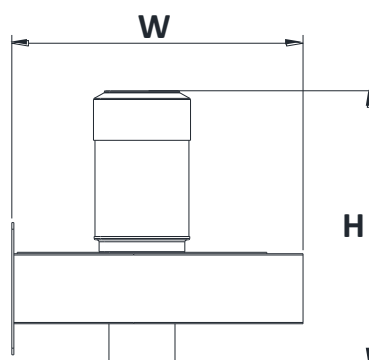
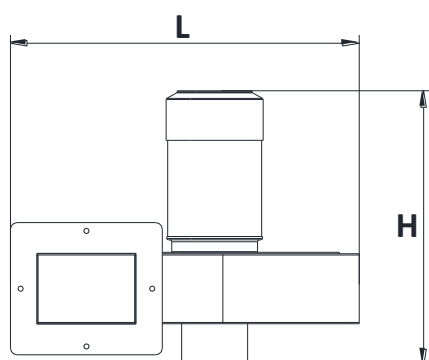
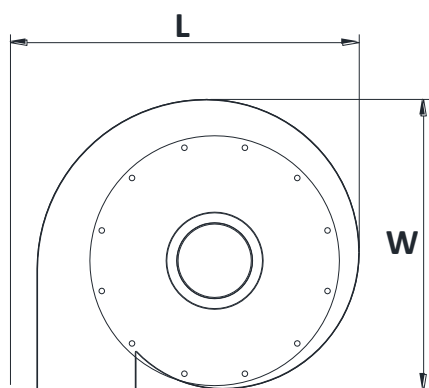
Extraction Fans

Please read and save these instructions. Read carefully before attempting to assemble, install, operate or maintain the product described. The continual observance of these procedures will help increase your production and extend the life of the equipment.

Specifications

Model type	Motor	Nominal Airflow [cfm]	Machine Dimension	Inlet Ø [inches]	Outlet Ø [inches]	Supply Power
FAN-DM-1HP-110-220V-1P	1HP	600	20.8" x 17.4" x 16.4"	4	6	110V or 220V/60Hz/1Ph
FAN-DM-1.5HP-110-220V-1P	1.5HP	900	19.9" x 18.9" x 17.5"	6	6	110V or 220V/60Hz/1Ph
FAN-DM-2HP-110-220V-1P	2HP	1600	21.5" x 20.5" x 17.5"	8	8	110V or 220V/60Hz/1Ph
FAN-DM-3HP-3P	3HP	1900	21.5" x 20.5" x 21.85	8	8	208-230V or 460V/60Hz/3Ph

Dimensions (in inches)



Extraction Fans

Please read and save these instructions. Read carefully before attempting to assemble, install, operate or maintain the product described. The continual observance of these procedures will help increase your production and extend the life of the equipment.

Safety Instructions of Extractions Fans

▲ DANGER: Indicates a potentially hazardous situation which, if not avoided, could result in death or serious injury.

▲ WARNING: Indicates a potentially hazardous situation which, if not avoided, could result in death or serious injury.

▲ CAUTION: Indicates a potentially hazardous situation which, if not avoided, will result in minor or moderate injury.

NOTE: Alerts the user to useful information about proper operation of the machine to avoid machine damage.

▲ WARNING: To reduce your risk of serious injury, read this Manual carefully before operating the product and preserve the Operation Manual properly.

- Ensure that the working environment is suitable for this machine. Do not use this product in areas that are wet, cluttered, or have poor lighting.

▲ WARNING: To reduce the risk of accidental injury, never leave machine running while unattended.

- Keep children, the elderly, handicapped people, and others who are not familiar with this piece of equipment away from it during operation.
- Safely store all tools when not in use. Store tools in a dry safe place to inhibit rust. Always lock up tools and keep them out of reach of children and others.
- Always use common sense and exercise caution. Do not operate under the influence of drugs or alcohol, when tired, or when distracted.
- Do not wear loose fitting clothing or jewelry as they can be caught in moving machine parts. Use proper welding clothing and eye protection when using this product for welding fume extraction.
- Keep work area clean and organized. Cluttered areas can be unsafe and dangerous during operation.
- Check for damaged parts before using machinery. Repair or replace any damaged parts before operation.
- Do not clean, repair, or replace any parts unless power to the machine is off.
- Replace the damaged parts by the instructions of the manual. If the said instructions are not specified in the manual, then contact your dealer.
- If the machine breaks down, contact your dealer immediately. Do not attempt to repair to avoid damaging the machine.
- All wires used by the product shall be safely located to prevent personal contact with the wires.

Extraction Fans

Please read and save these instructions. Read carefully before attempting to assemble, install, operate or maintain the product described. The continual observance of these procedures will help increase your production and extend the life of the equipment.

- Do not drag the electrical wires with force and do not use the wires if frayed or current leakage occurs to avoid harming the operator.

NOTE: The original manufacturer's parts and accessories shall be used to avoid injuries from occurring. If any problem happens, contact your dealer immediately.

- Keep machine away from oil, chemicals or flammables, as sparks may ignite these materials and cause explosion.
- When the fan blades are operated at high-speed, do not reach hand near these blades to prevent finger from breaking or clothes/necktie from getting caught.
- Do not put hand or foreign matter into the air inlet to avoid getting caught due to the high-speed rotation of fan blades.

Electrical Installation

- Check if the voltage, phase count and earth wire fit the machine.
- Inspect power and control cables periodically. Replace if damaged or bare wires are exposed.
- Be sure to follow local electrical codes and the electrical safety standards when connecting the machine.

⚠ CAUTION: For your safety, all electrical wire connections and installation shall be carried out by a professional technician.

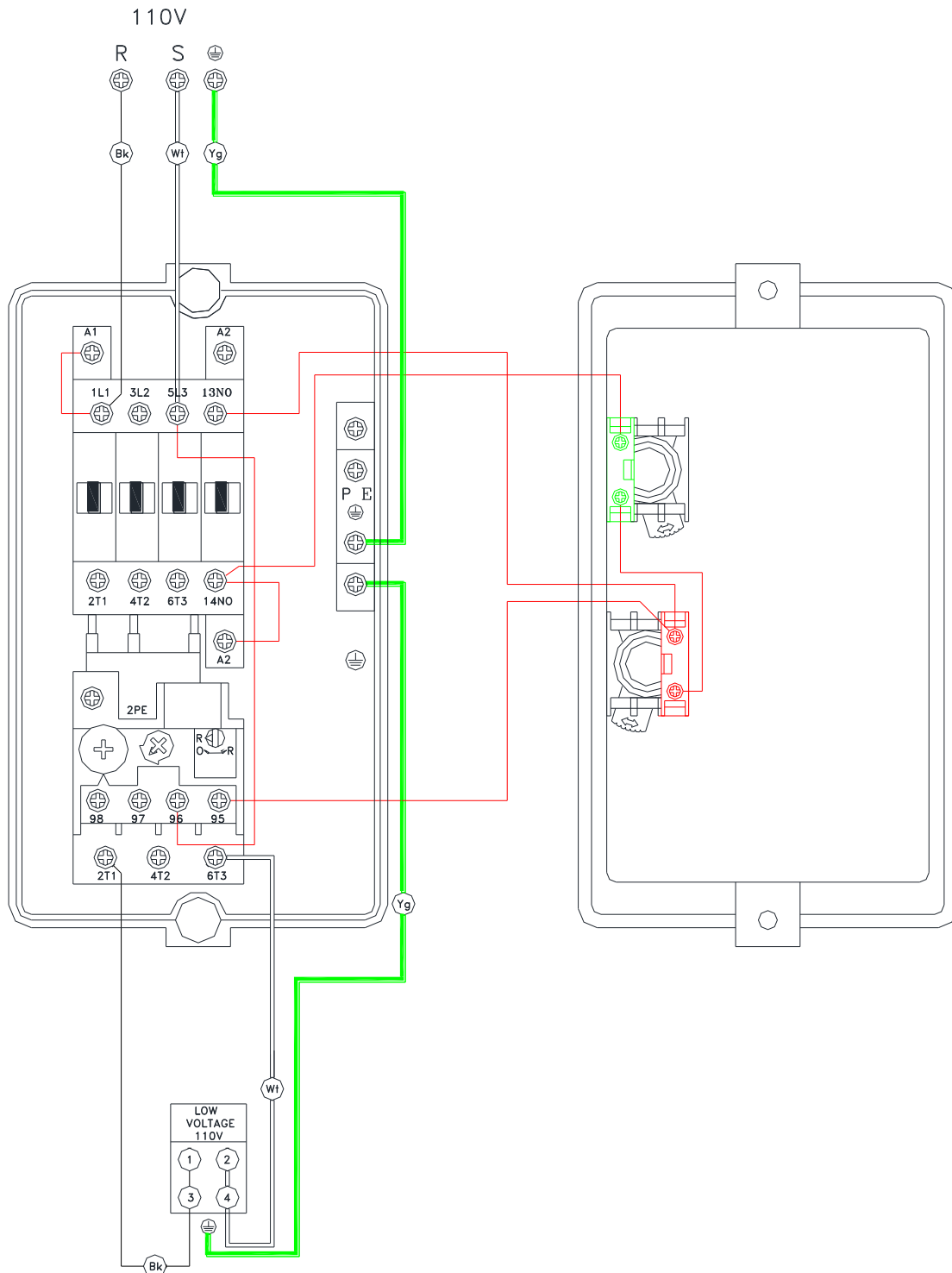
- In the event of certain malfunctions or breakdowns, grounding provides a path of least resistance for electric current to reduce the risk of electric shock.
- Before connecting the electric cord, make sure the switch is in the "OFF" position.

⚠ WARNING: If machine is not properly grounded and connected to power supply, can result in risk of electric shock.

Extraction Fans

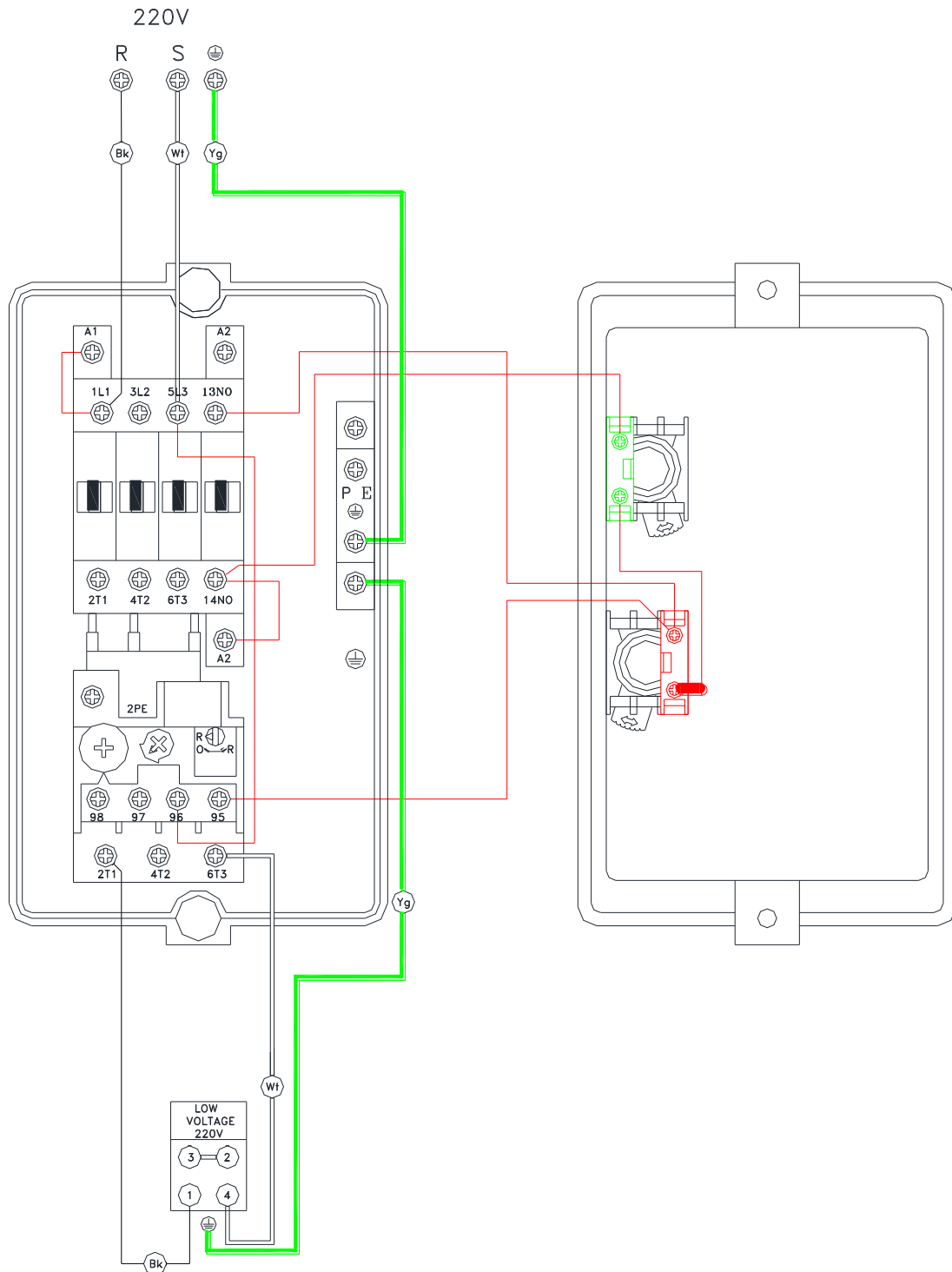
Please read and save these instructions. Read carefully before attempting to assemble, install, operate or maintain the product described. The continual observance of these procedures will help increase your production and extend the life of the equipment.

Electric Circuit Diagram



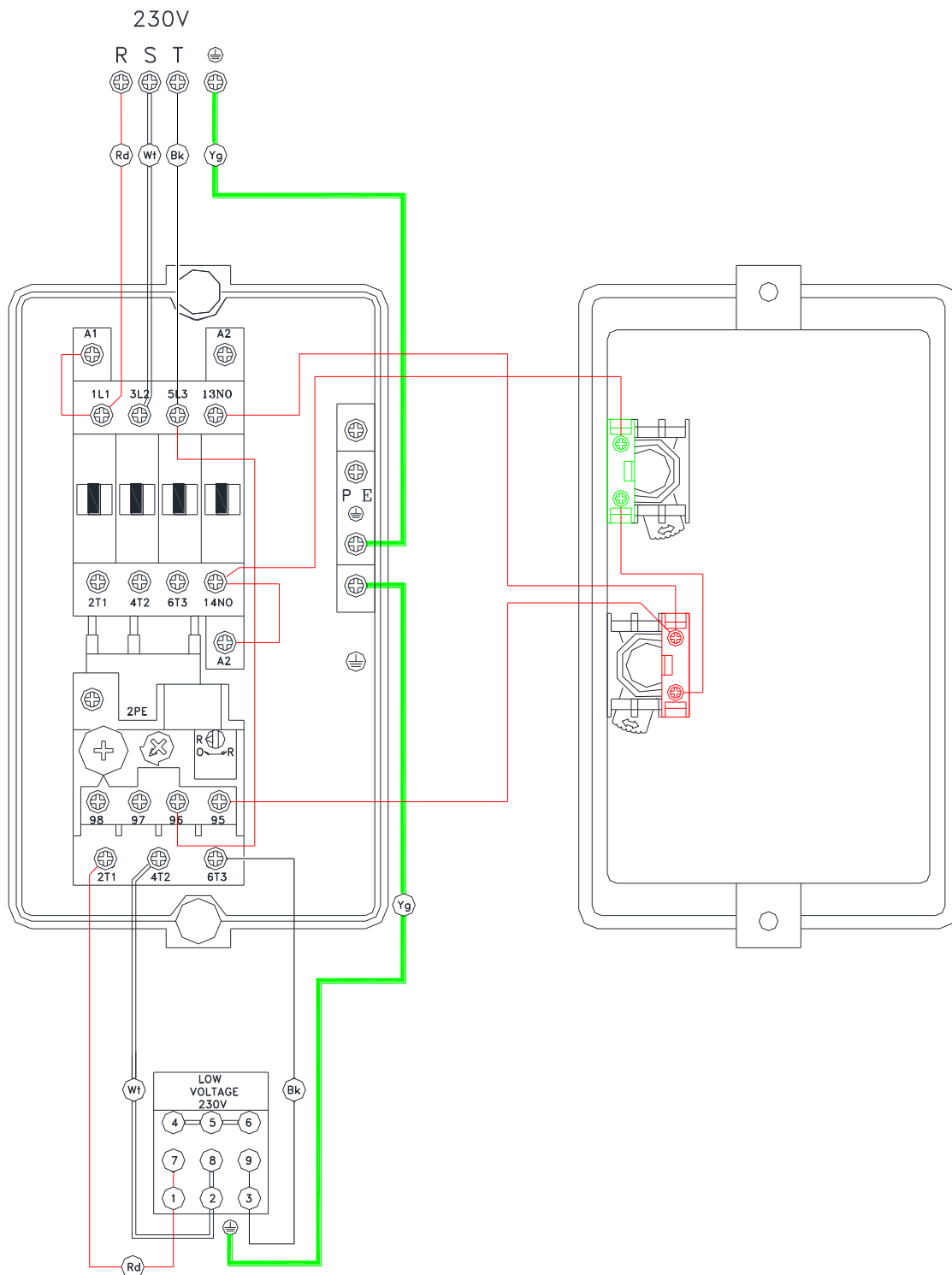
Extraction Fans

Please read and save these instructions. Read carefully before attempting to assemble, install, operate or maintain the product described. The continual observance of these procedures will help increase your production and extend the life of the equipment.



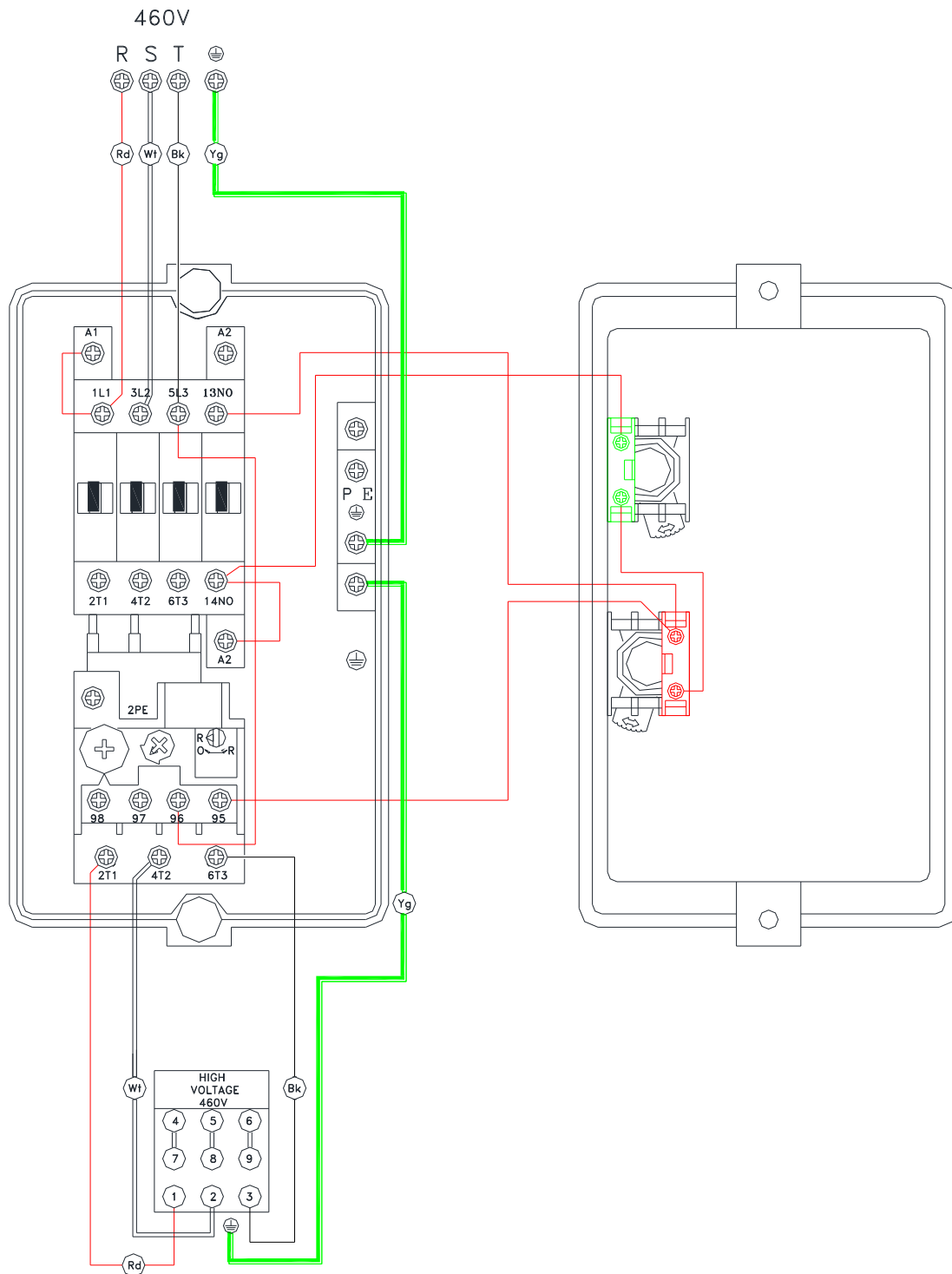
Extraction Fans

Please read and save these instructions. Read carefully before attempting to assemble, install, operate or maintain the product described. The continual observance of these procedures will help increase your production and extend the life of the equipment.



Extraction Fans

Please read and save these instructions. Read carefully before attempting to assemble, install, operate or maintain the product described. The continual observance of these procedures will help increase your production and extend the life of the equipment.



Extraction Fans

Please read and save these instructions. Read carefully before attempting to assemble, install, operate or maintain the product described. The continual observance of these procedures will help increase your production and extend the life of the equipment.

Assembly

⚠WARNING: Read and understand all of the precautions stated in the Manual, and for your safety, do not connect the Extraction Fan before the assembly is finished.

The machine must be fully assembled before it can be operated.

Before beginning the assembly process, check if the machine and components are consistent with those indicated in the Parts List.

If any doubt arises or when the components are incomplete, please contact your dealer.

NOTE: For correct assembly, refer to the Illustrations and Parts List on pages 10-13.

Option 1 (without converter tube)



1. Using the appropriate hardware, secure the wall mount bracket using the pre-drilled holes in the bracket.



2. Use attached hardware, install fan and fume arm together with wall mount bracket.

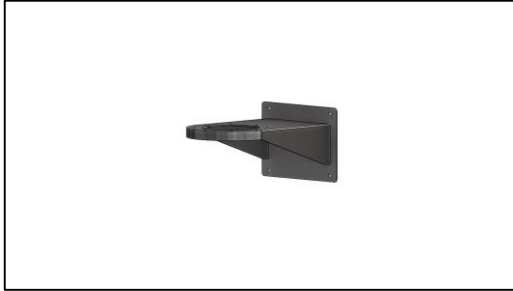


3. Use attached hardware, install outlet onto the fan.

Extraction Fans

Please read and save these instructions. Read carefully before attempting to assemble, install, operate or maintain the product described. The continual observance of these procedures will help increase your production and extend the life of the equipment.

Option 2 (with converter tube)



1. Using the appropriate hardware, secure the wall mount bracket using the pre-drilled holes in the bracket.
4. Use attached hardware, install outlet onto the fan.



2. Use attached hardware, install converter tube and fume arm together with wall mount bracket.

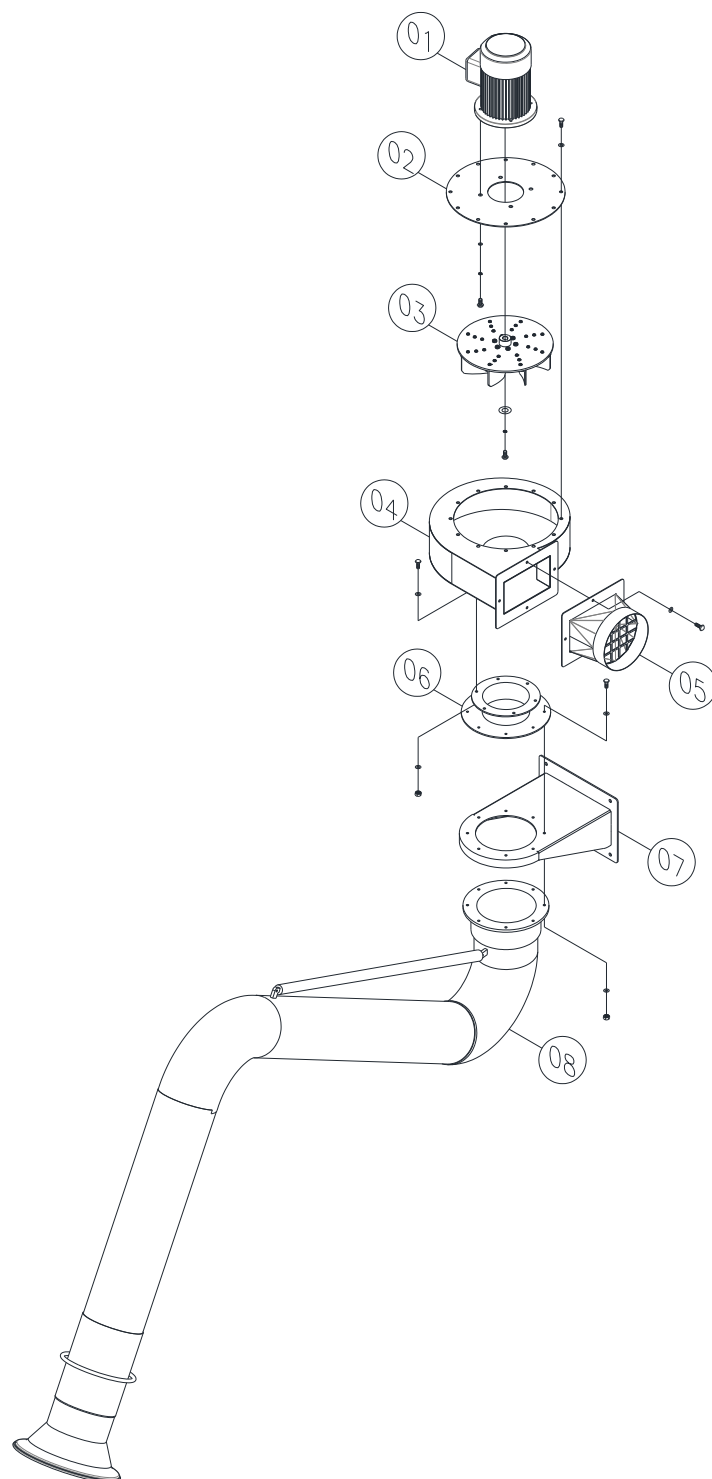


3. Use attached hardware, install fan onto the converter tube.

Extraction Fans

Please read and save these instructions. Read carefully before attempting to assemble, install, operate or maintain the product described. The continual observance of these procedures will help increase your production and extend the life of the equipment.

Parts Diagram



Extraction Fans

Please read and save these instructions. Read carefully before attempting to assemble, install, operate or maintain the product described. The continual observance of these procedures will help increase your production and extend the life of the equipment.

Parts List

Item	Description	Qty.
1	Motor	1
2	Impeller Cover	1
3	Impeller	1
4	Main Body	1
5	Square to round outlet	1
6	Converter tube (optional)	1
7	Wall mounting bracket	1
8	Fume arm	1

Extraction Fans

Please read and save these instructions. Read carefully before attempting to assemble, install, operate or maintain the product described. The continual observance of these procedures will help increase your production and extend the life of the equipment.

Contact Information

Industrial Air Purification, Inc.

580 Technology Drive

Sparta, TN 38583

Tel : (931) 372-0050

E-mail : Sales@IAP-AirProducts.com

Website : www.IAP-AirProducts.com