

**Disneyland® Resort** The Hotels of the *Disneyland® Resort* are so much more than just a place to stay... they complete your clients' Disney vacation experience. Plus, when your clients stay at one of the Hotels of the *Disneyland® Resort*, they are just footsteps away from all the magic!



From the stately elegance and rich wood tones of *Disney's Grand Californian Hotel® & Spa*...to the legendary enchantment of the *Disneyland® Hotel*...to the seashore splendor at *Disney's Paradise*

*Pier® Hotel*, each *Disneyland® Resort Hotel* has its own distinctive selection of shopping, dining experiences and themed pool areas that add a splash of excitement to your clients' day.





Artist rendering

## Why Stay at a Disneyland® Resort Hotel?

### Just Steps Away

With quick access to *Disneyland® Park*, *Disney California Adventure® Park* and the *Downtown Disney® District*, everything is just footsteps from the Guest's door.

### Extra Magic Hour

Early admission to either *Disneyland® Park* or *Disney California Adventure® Park* every day of your stay (valid Theme Park ticket and active Hotel room key required for each Guest\*).

### Character Dining

Guests can laugh, dance and dine with Goofy, have French toast with Mickey & Friends, or share pancakes with Chip 'n Dale! (Additional cost; reservations recommended.)

### Disney Character Wake-Up Calls

Start your clients' day off right with a special wake-up call from a Disney Character.

### Special Entrance

A special entrance into *Disney California Adventure® Park* through *Disney's Grand Californian Hotel® & Spa* makes the walk even quicker for Guests of the Hotels of the *Disneyland® Resort* with valid Theme Park admission.

### Keys to the Magic & Package Express

Your clients can use their "Key to the Magic" card to charge meals and merchandise right to their room – and have their Resort merchandise purchases delivered right to their Hotel with Package Express service. (Purchases must occur at a Disney-owned and -operated location.)

\*Disneyland® Resort Hotel Guest Extra Magic Hour currently allows registered Disneyland® Resort Hotel Guests admission into select attractions at Disneyland® Park on Tuesday, Thursday and Saturday and Disney California Adventure® Park on Sunday, Monday, Wednesday and Friday before the applicable Park opens to the general public. Check [Disneyland.com](http://Disneyland.com) for schedule of when each Park offers Extra Magic Hour. Each registered Hotel Guest (ages 3 and older) must have a valid Theme Park ticket and active Hotel room key card. Days and times of operation for Extra Magic Hour and all other elements including, but not limited to, operation of attractions, entertainment, stores, restaurants and appearances of Characters may vary and are subject to change without notice. Subject to capacity, cancellation and other restrictions.

Your clients will delight in world-renowned Disney service and—perhaps best of all—they'll be surrounded by unforgettable Disney magic throughout their vacation.



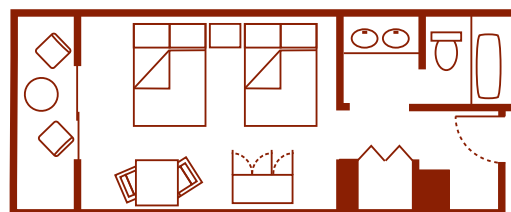
# Disney's Grand Californian Hotel® & Spa

Your clients will enjoy premium accommodations and rich dining experiences in American Craftsman style at this stunning Hotel with a special entrance to Disney California Adventure® Park with valid Theme Park admission.

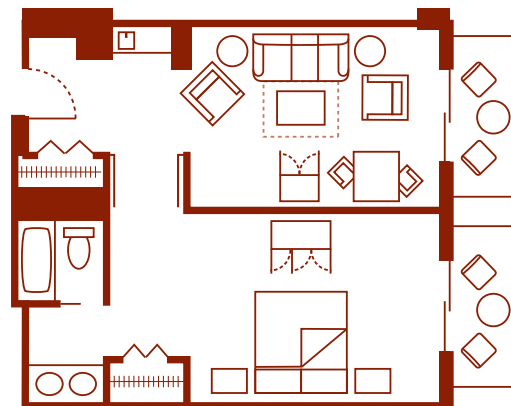


## Room Accommodations

- 948 Rooms, 44 Suites, 71 Villas.
- Standard rooms accommodate up to five Guests.
- Suites are also available for larger groups.
- View rooms provide spectacular views of either *Disney California Adventure*® Park, the *Downtown Disney*® District, pools or the surrounding cityscape.
- Special entrance into *Disney California Adventure*® Park with valid Theme Park admission.



Typical Standard Room with 2 queen-size beds, 356–380 sq. ft.



Typical 1-Bedroom Suite with 1 king-size bed and 1 sleeper sofa, 695–714 sq. ft.







Standard Room



1-Bedroom Suite



## Dining

### Signature Dining

- *Napa Rose* offers award-winning gourmet meals that celebrate the bounty of California.

### Unique and Themed Dining

- *Storytellers Cafe* features hearty home-style favorites at lunch and dinner, plus Chip 'n Dale Critter Breakfast with Disney Characters each morning.

### Other Dining

- *Hearthstone Lounge*.
- *White Water Snacks* – Breakfast, lunch, dinner and snacks.

## Recreation

- Bali-inspired *Mandara Spa* offers a full range of spa services (additional fee).
- Three sparkling swimming pools.
- Storytelling at the Great Hearth and the fascinating Art of the Craft Tour.
- Pinocchio's Workshop – A supervised kids' activity center for children ages 5–12. (Additional fees apply, including a fee for cancellation within 24 hours. Open from 5 p.m. to midnight nightly. Because space is limited, reservations are highly recommended.)
- Rentable poolside cabanas.



# The Villas at Disney's Grand Californian Hotel® & Spa

*A limited number of Villas are available.*

## Villa Accommodations

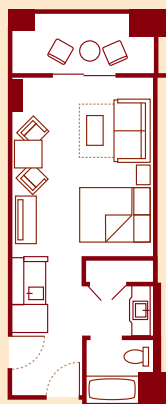
**Two-Bedroom Villas** accommodate up to nine Guests, plus one child under age 3 in a crib, and offer a fully equipped kitchen, 1 king-size bed, 2 queen-size beds, 1 queen-size sleeper sofa and 1 pull-down bed, washer and dryer, and 3 bathrooms, including master with whirlpool tub.

**One-Bedroom Villas** accommodate up to five Guests, plus one child under age 3 in a crib, and offer a fully equipped kitchen, 1 king-size bed, 1 queen-size sleeper sofa and 1 pull-down bed, washer and dryer, and 2 full bathrooms including master with whirlpool tub.

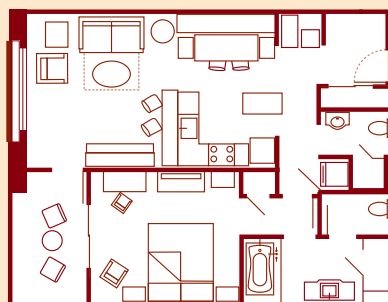
**Deluxe Studios** accommodate up to four Guests, plus one child under age 3 in a crib, and have a kitchenette, 1 queen-size bed and 1 queen-size sleeper sofa, and a full bath.



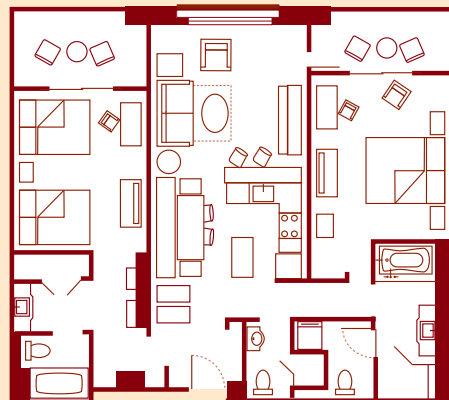
Two-Bedroom Villa



Typical Deluxe Studio Villa: 379 sq. ft.



Typical 1-Bedroom Villa: 865 sq. ft.



Typical 2-Bedroom Villa: 1,257 sq. ft.



# Disneyland® Hotel

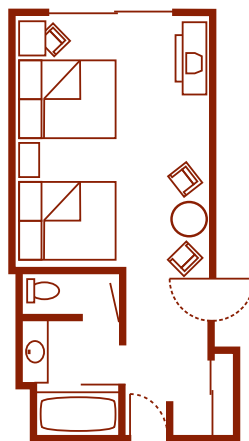
This legendary Hotel, featuring nostalgic elements of the original *Disneyland®* Park, will immerse your clients in magic with enchanting Guest rooms, pools and dining venues. Filled with unexpected delights, a stay at the *Disneyland®* Hotel is a vacation all by itself!



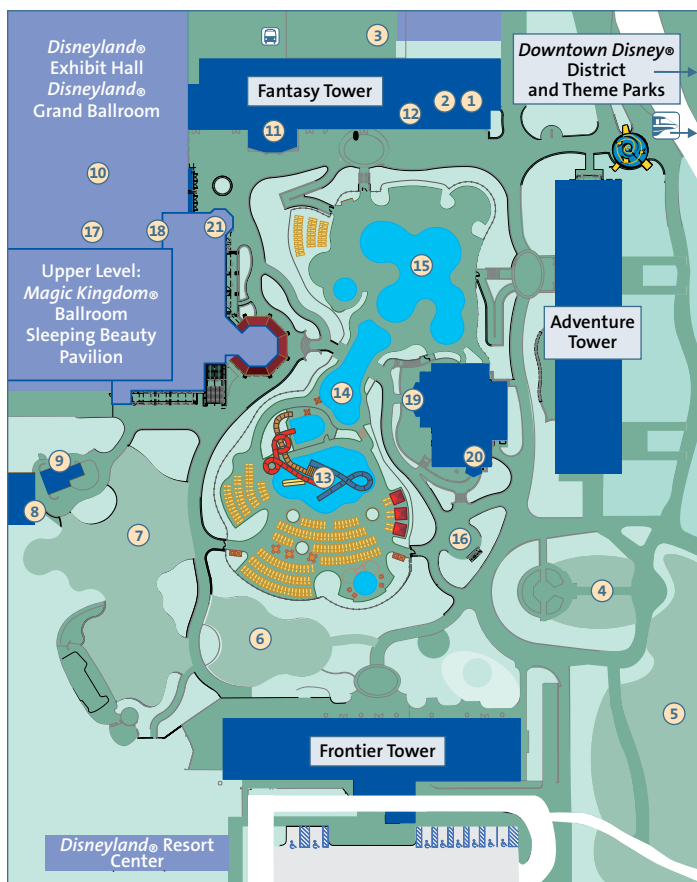
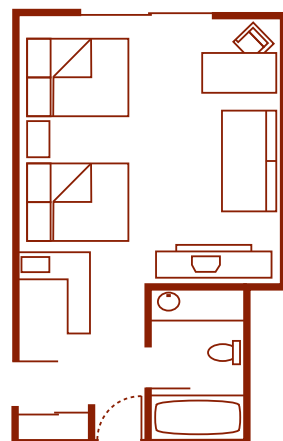
## Room Accommodations

- 973 Rooms, including 71 Suites.
- Standard Rooms accommodate up to five Guests.
- Suites are also available for larger groups.
- View rooms provide spectacular Resort, pool or city views.

Typical  
Standard  
Room,  
425–475  
sq. ft.



Typical  
Standard  
Room,  
425–475  
sq. ft.



### FEATURES & SERVICES

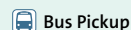
- ① Front Desk
- ② Guest Services
- ③ Bell & Valet Services
- ④ Rose Court Garden
- ⑤ Adventure Lawn
- ⑥ Frontier Lawn
- ⑦ *Magic Kingdom®* Lawn
- ⑧ Fitness Center
- ⑨ Guest Laundry
- ⑩ Business Center

### SHOPPING & RECREATION

- ⑪ Disney's Fantasia Shop
- ⑫ small world Gifts and Sundries
- ⑬ Monorail Pool & Slides
- ⑭ D-Ticket Pool
- ⑮ E-Ticket Pool
- ⑯ Outdoor Fireplace

### RESTAURANTS & LOUNGES

- ⑰ Steakhouse 55 & Lounge
- ⑱ Goofy's Kitchen
- ⑲ Tangaroa Terrace – Casual Island Dining
- ⑳ Trader Sam's Enchanted Tiki Bar
- ㉑ The Coffee House







Standard Room



1-Bedroom Suite

## Dining

### Character Dining

- *Goofy's Kitchen* – Whimsical buffet-service restaurant featuring brunch and dinner with Disney Characters.

### Signature Dining

- *Steakhouse 55* – A fresh update on the classic steakhouse concept with an intimate ambiance and a renowned wine cellar. Serves breakfast and dinner.

### Quick-Service Dining

- *Tangaroa Terrace* – Casual Island Dining, inspired by Adventureland, features casual island dining accented with tiki torches and tropical music.

### Other Dining Options

- *Trader Sam's Enchanted Tiki Bar* – A Jungle Cruise-inspired hideaway, offers tropical cocktails, juices and an ambrosial bar menu.
- *The Coffee House* – Muffins, bagels, yogurt, coffee and more.
- Pool Bar.

## Recreation

- Monorail Pool and Slides.
- 4-foot-deep D-Ticket Pool.
- E-Ticket Pool.
- Fitness Center.
- Mickey Spa.
- Minnie Spa.
- Rentable, poolside cabanas.





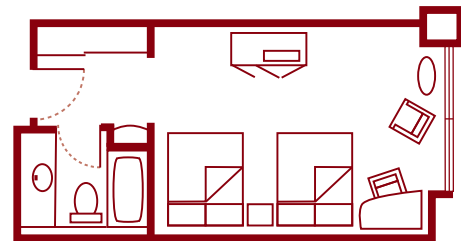
# Disney's Paradise Pier® Hotel

The heyday of California beachfront boardwalks is the heart of this Hotel. With its beautifully appointed rooms, the seashore touches will carry your clients on a wave of relaxation, all the way up to the whimsical waterslide and scenic rooftop pool.

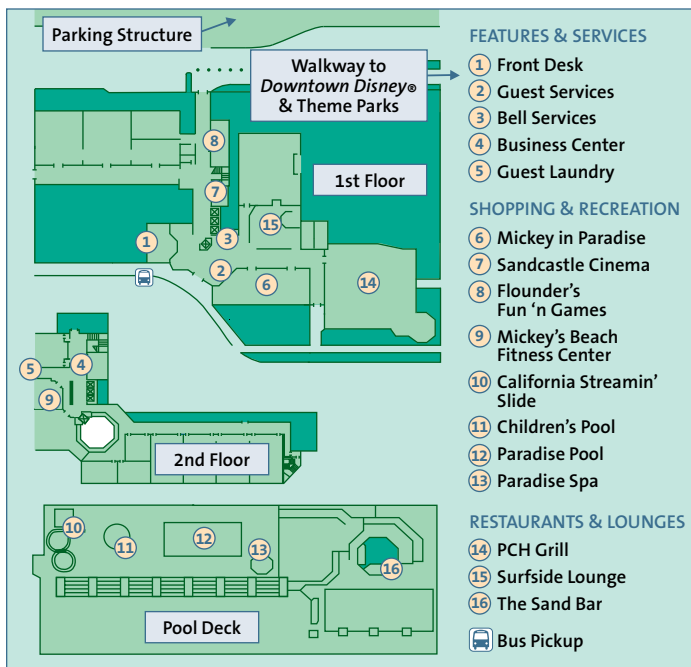


## Room Accommodations

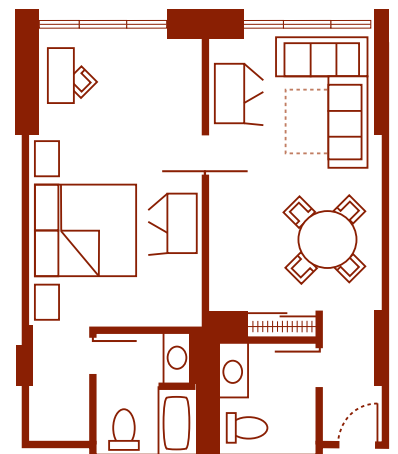
- 481 Rooms, including 25 Suites.
- Standard rooms accommodate up to five Guests.
- Paradise Suites are ideal for groups of up to six Guests.
- View rooms provide spectacular views of either *Disney California Adventure*® Park, pools or the surrounding cityscape.



Typical Standard Room with 2 double beds, 350–400 sq. ft.



Typical 1-Bedroom Suite with 1 king-size bed and 1 sleeper sofa, 740–804 sq. ft.







Standard Room



Dana Point Suite



## Dining

### Character Dining

- *Disney's PCH Grill* features Surfs Up! Breakfast with Mickey & Friends – Includes photo opportunities and fun activities with Mickey and friends.

### Casual Dining

- *Disney's PCH Grill* – California-inspired dishes with fresh, light and seasonal flavors.

### Other Dining

- *Surfside Lounge.*
- *The Sand Bar.*

### Recreation

- Rooftop pool area includes California Streamin', a roller coaster-inspired waterslide, plus a whirlpool spa and toddler wading pool.
- Mickey's Beach Fitness Center.
- Arcade.