



Travel Service Inc., Hawaii

2153 N. King St., Suite #318 Honolulu, Hawaii 96819

Tel: (808) 739-9010 TA#4988 Email address: [nandktravel@hawaiiantel.biz](mailto:nandktravel@hawaiiantel.biz)

## Shikoku Island Tour including Kurashiki & Himeji

( Mar 02 – Mar 12, 2027 )

**HIGHLIGHTS of the TOUR:** Bus tour goes over 3 bridges that connects HONSHU – SHIKOKU. 1 night in Kansai Airport, 2 nights in Takamatsu, 2 nights in Kochi, 3 nights in Matsuyama- Dogo Onsen, and 1 night in Himeji \*\* Hands on Experience: making Sanuki Udon and Uchiwa “fan” \*\* Last day on 3/12, Kobe Beef Teppanyaki Steak for Lunch in Kobe

### TUESDAY, Mar 2<sup>nd</sup> HONOLULU – OSAKA/KANSAI

- 8:15a.m. Please meet your local tour escort, TOMOMI SHIMABUKURO at the Japan Airlines check-in area located at **TERMINAL#2, LOBBY#5** at **DANIEL K INOUE INTERNATIONAL AIRPORT**. She will give your travel packet with JAL “E” ticket receipt, luggage tags, final tour itinerary, **Please have your JAPAN AIRLINES “E” ticket and passport ready.**
- 11:25a.m. Depart on **JAPAN AIRLINES Flt.#799** bound for Osaka/ Kansai, Japan. **A meal will be served one hour after take-off.**  
**In-flight meals: LUNCH: Main entrée’with miso soup, salad, mixed fruits, and pineapple sorbet**  
**Prior to arrival: Cold Cut Sandwich with 2 pieces of Big Island cookies**  
**Throughout the flight, you can enjoy complimentary soft drinks like JAL's SKY TIME drink (mixed peach & grape juice), other soft drinks, assorted beers, wines, sake, coffee, & green tea. Complimentary In-flight Movies like the new up-to-date ones, Japanese, Chinese, & Korean Movies. Over 40 Music Channels and limited games too.**

### WEDNESDAY, Mar 3<sup>rd</sup> OSAKA / KANSAI

- You will be passing thru International Date Line so you will be losing a day.
- 4:05p.m. Arrive Osaka/ Kansai International Airport. Upon arrival, immigration & custom procedures are required. Please pickup your own luggage(s) from the carousel at the baggage claim area. Please use the baggage cart for your convenience.



**\*\*Meet your bilingual tour guide: Ms. Akiko Sasaki from Tokyo \*\* She will be waiting around the “GACHAPON” (Capsule Toy Vending Machine) on the left is “Lawson” and the Information Screen around the “Mauka Side” and middle area of the 1<sup>st</sup> floor**

With the cart, we will take the elevator to the 2<sup>nd</sup> Floor & walk over to AEROPLAZA to NIKKO KANSAI AIRPORT HOTEL for your one night stay. From the Passenger Terminal Building, it takes about 5 minutes to walk to the hotel.

On the left-hand side of the 2<sup>nd</sup> Floor hotel entrance, there’s a ‘LAWSON’ Convenience Store. 3<sup>rd</sup> Floor inside AERO PLAZA, is an Izakaya “ANZU” open till 9:00pm and “NAKAU” fast food for Udon or Soba open 24 hours. Newly open, OLIVE HILL (Pasta, Pizza, & Beef Stew) opened till 10:00pm

### THURSDAY, Mar 4<sup>th</sup> OSAKA – NARUTO - TAKAMATSU

- 5:45-8:00a.m. Buffet breakfast at the hotel.
- 8:00a.m. Check-out of the hotel. Portorage service available.
- 8:15a.m. Today we will be going to TAKAMATSU via NARUTO.
- 9:45-10:20a.m. 5-4-4 break & to buy some snacks at AWAJI SERVICE AREA HIGHWAY OASIS. On a clear day, you can see Akashi Bridge the world's longest suspension bridge in the world with a length of 12,831 ft.
- 12:15p.m. Continue on to UZUSHIO CRUISE TERMINAL, we will take a 20 minute cruise to see the NARUTO WHIRLPOOLS. If you think, you’ll get seasick, you can wait at the terminal, there is a small gift shop rest area, and clean restrooms



**Akashi Bridge**

**Naruto Whirlpools**

**Awa Odori**

1:15p.m.

A stop at MICHI no EKI KURUKURU NARUTO for late lunch or snack and some shopping time.

3:30p.m.

Last stop before going to TAKAMATSU, AWA ODORI KAIKAN, dedicated to the city's famous dance festival, the AWA ODORI, held for over 400 years during the Obon holidays in mid-August. AWA ODORI KAIKAN has a 3D theater where guests can enjoy the dance and the main attraction to see the actual Awa Odori Performance at 4:00p.m.

5:30p.m.

Check-in at RIHGA HOTEL ZEST TAKAMATSU HOTEL for 2 nights stay, hotel located in heart of downtown. Nearby have very good and reasonable “Kaiten Sushi” similar to our Genki Sushi. Couple places with Udon, Olive Pork Tonkatsu (olive fed), St. Marc Café serving light sandwiches, desserts, and coffee drinks.

After check-in, the rest of the evening at your leisure. **( B )**

**FRIDAY, Mar 5<sup>th</sup>**

**TAKAMATSU**

Buffet breakfast at the hotel.

9:30a.m.

Today enjoy a tour of TAKAMATSU, with 2 hands on experiences.

First stop, RITSURIN PARK, one of the most famous gardens created by the local feudal lords during the early Edo Period, considered one of the best gardens in Japan.



**Ume Flowers taken on March 2024**

RITSURIN PARK – PRODUCT SHOP, a souvenir shop selling local products from KAGAWA. Enjoy making UDON at NAKANO UDON SCHOOL and have it for lunch with assorted tempura. After lunch, We will visit UCHIWA no MINATO MUSEUM. Here, you can see a master of this traditional craft at work, and also experience making one yourself. Let’s create our very own, one-of-a-kind uchiwa! Around 90% of Japan’s Uchiwa are still made in Marugame.



Last stop, MARUNAKA POWER CITY MARUKAME SHOPPING, the 2<sup>nd</sup> floor has a DAISO 100Yen Shop, the ground floor has a supermarket, and on the corner is a small clothing store.

5:00p.m.

Return back to our hotel, RIHGA ZEST TAKAMATSU. The rest of the evening at your leisure. **( B, L )**

**SATURDAY, Mar 6<sup>th</sup>**

**TAKAMATSU – TOKUSHIMA – KOCHI**

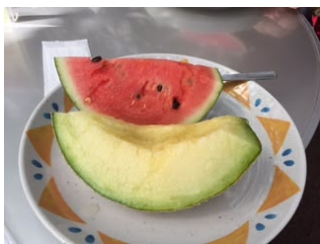
Buffet breakfast at the hotel. Check-out of the hotel.

8:30a.m.

Travel to the countryside of ‘OBOKE GORGE’ AND ‘KOBOKE GORGE’, known for their beautiful natural scenery.

10:30a.m.

IYA KAZURABASHI (Vine Bridge), the largest and most popular of the remaining bridges, stretches 45 meters across the Iya River at the center of the valley, and gives visitors an unsettling view of the water 14 meters below the open slats of the span. The bridge, which is rebuilt every 3 years, is anchored to tall cedar trees at both ends and has steel cables hidden within the vines for safety. Lunch at your own expense around the Iya Vine Bridge area.



**Countryside of Oboke Koboke**

**Iya Vine Bridge**

**Sweet Melon & Watermelon**

**Yosakoi Hapi Coat**

1:15p.m.

On our way to KOCHI, a stop at NISHIJIMA ENGEI DANCHI, a nursery that specializes in tropical fruits. We will have a chance to sample their delicious melon and watermelon. Drive By, Harimaya-bashi the scene of Kochi's most famous love-affair, and is the city's most recognizable landmark.

2:45p.m.

Last stop, KOCHI YOSAKOI INFORMATION EXCHANGE CENTER, consists of history and knowledge of the "YOSAKOI CIRCLE". THE YOSAKOI THEATER' runs films of the 60 year history of the Yosakoi Festival on the 150 inch screen. In the "Yosakoi Taiken Corner", we can experience the "Seicho Yosakoi Naruko Odori" dance while holding the traditional "naruko"bird clappers, or put on the festival costumes and take a souvenir picture.

4:00p.m.

Check-in at KOCHI SUNRISE HOTEL for 2 nights stay, located in the heart of downtown Kochi City. After check-in, the rest of the day is at your leisure. ( B )

**SUNDAY, Mar 7<sup>th</sup>**

**KOCHI**

7:00a.m.(starts)

Breakfast at the hotel.

9:00a.m.

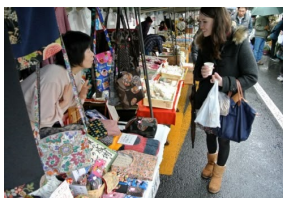
SUNDAY MARKET, Japan's oldest outdoor marketplace opened in 1690. It is the longest open market in Japan, 1.3 kilometers between Kochi Station and Kochi Castle. The market consists of a row of stalls selling local foods and crafts.

11:00a.m.

KOCHI CASTLE MUSEUM of HISTORY, the museum has been open since May 1991 for the purpose of the study, collection, display, and preservation of the historical, archaeological and folk objects of Kochi. KOCHI CASTLE (brief photo stop).

12:35p.m.

KOCHI'S HIROME ICHIBA (market), lunch on your own expense. At Hirome-Ichiba Market, you can enjoy katsuo-no-tataki, local chicken entrée'like yakitori, fresh sashimi, Indian curry, & much more.



**Sunday Morning Market**

**Hirome Ichiba(market)**

**Hirome Ichiba Seating Places**

3:00p.m.

KOCHI AEON MALL, some free time for shopping & lunch. Food Court & DAISO "100 Yen Shop" located on 2<sup>nd</sup> floor. UNIQLO and the Supermarket are located on the 1<sup>st</sup> floor.

5:00p.m.

Return back to hotel, KOCHI SUNRISE HOTEL. The rest of the day at your leisure. ( B )

**MONDAY, Mar 8<sup>th</sup>**

**KOCHI – DOGO ONSEN (Matsuyama)**

7:00a.m.(starts)

Breakfast at the hotel. Check-out of the hotel.

9:00a.m.

Bus departs for DOGO ONSEN with one stop at JR KOCHI STATION.

9:15a.m.

1<sup>st</sup> stop to see the statue of SAKAMOTO RYOMA and his Bakumatsu comrades.

10:30a.m.

SAKAMOTO RYOMA MEMORIAL MUSEUM opened in Nov 1991 and re-opened in 2018. Sakamoto Ryoma, born in Tosa, was a patriot at the end of the Edo Period and dedicated his life to early modern Japan. The museum commemorates his achievements and exhibits items relating to him.



**Sakamoto Ryoma Statue**

**Sakamoto Ryoma Museum**

1:00p.m.

Drive to MATSUYAMA with couple rest stops along the way on the toll way. IRINO PARKING AREA for lunch, on your own expense.

Continue on to Dogo Onsen, one of Japan's oldest and famous hot springs in Matsuyama with a stop at ISHIZUCHISAN SERVICE AREA for 5-4-4 break.

4:00p.m.

Check-in at OLD ENGLAND DOGO YAMANOTE HOTEL for 3 nights stay, western style hotel with onsen, located within walking distance to DOGO ONSEN SHOPPING ARCADE.

5:00p.m. After check-in, the rest of the evening at your leisure. **( B )**  
 We will walk to DOGO ONSEN SHOPPING ARCADE.  
 The main attraction inside the DOGO ONSEN SHOPPING ARCADE is DOGO ONSEN HONKAN, a wooden public bathhouse dating from 1894(we will not go inside). BOTCHAN KARAKURI CLOCK near the station plays music on the hour while figurines of characters from the famous novel “Botchan” come to life. Next to the clock stands a foot bath free for all to enjoy.



After watching the Botchan Karakuri Clock, dinner at your own expense. The rest of the evening at your leisure. **( B )**

**TUESDAY, Mar 9<sup>th</sup> DOGO – MATSUYAMA – DOGO**

7:00a.m.(starts) Breakfast at the hotel.  
 9:00a.m. A day tour of MATSUYAMA CITY.  
 9:30a.m. First stop, Matsuyama Castle , one of Japan's twelve "original castles", which have survived the post-feudal era since 1868 intact. It is also one of the most complex and interesting castles in the country. It is located on Mount Katsuyama, a steep hill in the city center that provides visitors with a bird's eye view of Matsuyama and the Seto Inland Sea.



(1) Matsuyama Castle



**Matsuyama Castle**

**The ropeway to the castle**

**Iyotetsu Takashimaya**

11:45a.m. Last stop, lunch on your own and some shopping time in downtown Matsuyama. IYOTETSU TAKASHIMAYA, the largest department store in Shikoku. Across Takashimaya is STARBUCKS next to the store is a replica display of Botchan Train. One of Japan’s leading novelists, Sōseki Natsume wrote the novel Botchan based on his experience teaching at a junior high school in Matsuyama. On the side of Starbucks is GINTENGAI SHOPPING STREET with Matsumoto Kiyoshi Drug Store, Seria 100 Yen Shop, and 7-11 convenience store nearby.

3:00p.m. Return back to our hotel in Dogo Onsen, OLD ENGLAND DOGO YAMANOTE HOTEL. **( B )**

**WEDNESDAY, Mar 10<sup>th</sup> DOGO – IMABARI – DOGO**

7:00a.m.(starts) Breakfast at the hotel.  
 9:00a.m. Today we drive to IMABARI about one hour away from Matsuyama. IMABARI TOWEL MUSEUM is the world's first museum dedicated to towels.You can watch the towel manufacturing process, enjoy towel art, and purchase a wide variety of towel products. Imabari City connects to SETO INLAND SEA via SHIMANAMI KAIDO. The Shimanami Kaido is over 37 miles long toll road that connects Japan's main island of Honshu to the island of Shikoku, passing over six small islands in the Seto Inland Sea.



**Imabari Towel Museum**

**Kurushima Kaikyo Bridge**

**Tatara Bridge**

Shimanami Kaido provides the marvelous views with its splendid bridges. Kurushima Kaikyo Bridges (13173 ft.) which links Oshima Island to Shikoku, are the first three consecutive suspension bridges in the world. Tatara Bridge (4856 ft.), one of the world’s longest cable-stayed bridges, spreads its wings over the border of Ehime and Hiroshima.

Last stop at TATARA SHIMANAMI PARK MICHI no EKI provides an excellent view over the Tatara Bridge, the world’s most spectacular suspension bridge.

After the tour, return back to our hotel, OLD ENGLAND DOGO YAMANOTE HOTEL.

6:00p.m. Dinner with group members and your Japan tour guide. ( B, D )

### **THURSDAY, Mar 11<sup>th</sup> MATSUYAMA – OKAYAMA - HIMEJI**

7:00a.m.(starts) Breakfast at hotel. Check-out of the hotel.

9:00a.m. Depart for KURASHIKI (Okayama) a city on Japan's Seto Inland Sea. Kurashiki has a preserved canal area that dates back to the Edo Period (1603-1867), when the city served as an important rice distribution center. In fact, the name "Kurashiki" can be roughly translated as "town of storehouses" in reference to the rice storehouses. Many of Kurashiki's former storehouses have been converted into museums, boutiques and cafes. Kurashiki is known as the birthplace of denim in Japan. We will drive thru SETO OHASHI opened in 1988 a double decker bridge connecting KAGAWA and OKAYAMA PREFECTURES in Japan across a series of 5 small islands in the Seto Inland Sea.



**Seto Bridge**



**Kurashiki Setouchi Kojima Hotel**



**Kurashiki Historical Area**

We will make couple 5-4-4- stops at the service area on the toll way.

11:30a.m. Japanese lunch at KURASHIKI SETOUCHI KOJIMA HOTEL.

1:00p.m. Upon arrival at KURASHIKI, you will have some time to walk around the canal area with shops. After Kurashiki, continue on to HIMEJI (HYOGO), most famous for its magnificent castle, Himeji Castle.

5:00p.m. Arrive at HOTEL NIKKO HIMEJI for a 1 night stay, located across the JR Himeji Station. PICOLE HIMEJI SHOPPING MALL located near the hotel, most of the shops are open till 8:00pm. Picole #2, there are ORAGA SOBA & IZAKAYA (open till 10pm). Picole#3: RIKIMARU "Kaiten Sushi" (open till 10pm).

After check-in, the rest of the day is at your leisure. ( B, L )

### **FRIDAY, Mar 12<sup>th</sup> HIMEJI – KOBE – OSAKA/ KANSAI AIRPORT**

6:30(starts) Breakfast at "All Dini2g at Serena".

9:15a.m. Check-out of the hotel.

9:30a.m. Bus departs for HIMEJI CASTLE. HIMEJI CASTLE is also known as Heron Castle (Shirasagijo) due to its elegant, white appearance. It is widely considered as Japan's most spectacular castle for its imposing size and beauty and its well preserved, complex castle grounds. The castle is both a national treasure and a World heritage. We will just go to the garden side and take souvenir photos.



**Himeiji Castle**



**Kobe Beef Teppanyaki**



**Kishiwada Danjiri Kaikan**

After Himeji, continue on to KOBE (HYOGO). Kobe is the sixth-largest city in Japan and the capital city of Hyogo Prefecture.

12:00p.m. KOBE BEEF TEPPANYAKI LUNCH at STEAKLAND in Kobe.

1:15p.m. Bus departs for KISHIWADA, OSAKA.

2:15-4:00p.m. Arrive at KISHIWADA DANJIRI KAIKAN, it provides information and activities on the famous Kishiwada Danjiri Festival that is held every year. Not only do visitors learn about the history and structure of the Danjiri (floats), you can also watch a Danjiri Festival movie.

4:30-6:30p.m. Last stop, AEON MALL RINKU SENNAN near OSAKA KANSAI AIRPORT. RESTAURANTS, 100 Yen "DAISO", STARBUCKS, and AEON SUPERMARKET on the 1<sup>st</sup> Floor. FOOD COURT, UNIQLO, and MUGI on the 2<sup>nd</sup> Floor.

7:00p.m. Upon arrival, please have your passports & "E" ticket ready. You will then check-in, individually or as a family at JAPAN AIRLINES on the 3<sup>rd</sup> floor for International Departure.

After check-in, you will have free time to go to Duty Free Shop.

10:10p.m. Depart on JAPAN AIRLINES FLT.#790 bound for HONOLULU, HAWAII.

A meal will be served 1 hour after take-off.

10:25a.m. Arrive Honolulu, on the same day we departed, Friday, March 12<sup>th</sup> in the morning.

**There's no US Custom form to be filled but you still have to go thru immigration and US custom.**

**\*\*\*This itinerary is subject to change at anytime without prior notice\*\*\***

Based on 18-25 full paying tour members / Max: 25 full paying tour members

Final payment, check payment only.

Group Airfare(based on 10 people or more and Economy Class) is based on tariffs in effect on 6/01/2026

Upgrade to Premium Economy Seats: (limited to 6 seats).

As a Premium Economy Class passenger, you will be able to relax prior to your flight's departure in the spacious comfort of the JAL Sakura Lounge in Honolulu and on your return at Osaka Kansai International Airport.

JAL's Business Class Seats: (limited to 6 seats).

**No deviation on the group airfare.**

Tour cost is subject to change according to any taxes and fuel surcharge increases on the airfare and the rate of the exchange between US dollar and Japanese yen (157-159 Yen to \$1.00 USD)

**RESERVED: 6-SINGLE ROOMS / 10-TWIN ROOMS & 1- TRIPLE ROOM**

**Please sign up by Nov 16, 2026 \*\*\* Or First Come First Serve\*\* Full Payment is due on Dec 01, 2026 \*\*\***

**Tour Cost: based on 18-25 full paying tour members**

**TWIN/ TRIPLE OCCUPANCY: \$4350.00 per person**

**SINGLE OCCUPANCY: \$4650.00 per person**

**JAL PREMIUM ECONOMY SEAT: (6 seats)**

**TWIN/ TRIPLE OCCUPANCY: \$5350.00 per person**

**SINGLE OCCUPANCY: \$5650.00 per person**

**JAL BUSINESS CLASS SEAT: (6 seats)**

**TWIN/ TRIPLE OCCUPANCY: \$6550.00 per person**

**SINGLE OCCUPANCY: \$6850.00 per person**

***Tour Cost Includes:***

***\*\*Round trip on Japan Airlines from Honolulu to Osaka and back from Osaka to Honolulu on Economy Class\*\****

***· 9 Nights Hotel accommodations***

***· 9 Breakfasts, 3 Lunches & 1 Dinner on 3/10***

***· Admission Fees***

***· Local experienced bilingual tour guide from N & K Travel and Japanese English speaking licensed tour guide***

**Land Cost Only: (air is not included): Individual arrangements to meet the group are not included like the transportation to & from the airport to hotel is not provided. If you need assistant, please let us know.**

Based on 18-25 full paying tour members:

**TWIN/ TRIPLE OCCUPANCY: \$3350.00 per person**

**SINGLE OCCUPANCY: \$3650.00 per person**

**RESERVATIONS & DEPOSITS:**

Reservations should be made as soon as possible by filling out the application form and sending a deposit of \$100.00 per person. Reservations are based on a first come first serve basis.

Returned check fee of \$25.00 per check.



*Travel Service Inc., Hawaii*  
2153 North King St., Ste#318 \*\*\* Honolulu, HI. 96819  
Tel: (808) 739-9010 Fax: (808) 735-0142 TAR#4988  
Email address: [nandktravel@hawaiiantel.biz](mailto:nandktravel@hawaiiantel.biz)

## **GENERAL CONDITIONS for Tours to Okinawa & Japan**

(revised as of 8/19/2025)

### **TOUR INCLUDES:**

Hotel accommodations, transfers, sightseeing, and round trip air transportation from Honolulu, economy seating.

Adjustments will be made if there is an increase in fuel surcharges and any fluctuation in exchange rates between US Dollars and Japanese Yen.

### **AIR TRANSPORTATION:**

Air service within tours is included except for those buying the land only portion. Airfare inclusive rates are based on advanced purchase and may be subject to certain airline restrictions and penalties. Adjustments will be made if there is any increase on taxes.

### **MEALS:**

Meals included are noted on the brochure or itineraries. All other meals are the responsibility of the individual. Meal codes are: **B** – Breakfast, **L** – Lunch, **D** – Dinner.

### **RESERVATIONS & DEPOSITS:**

Reservations should be made as soon as possible by filling out the application form and sending a deposit of \$100 per person, check payment only. Reservations are based on a first come first serve basis. Returned check fee of \$25.00 per check.

### **CANCELLATION POLICY for the Air Portion with Japan Airlines Group Seats:**

**No deviations and no upgrades are allowed. Check payment only.**

100 days prior to departure - \$100.00 per person

Once ticketed/ to make a name change, there's an exchange fee

Once ticketed/ \$400.00 cancellation penalty fee applies per person

Once ticketed/ any changes for the return date, \$350.00 penalty fee + any fare difference

### **CANCELLATION POLICY for the Land Portion:**

61 days prior to departure – Full refund

59-31 days prior: 50% cancel fee of the tour price, per person charge

30-15 days prior: 75% cancel fee of the tour price, per person charge

14 days prior or less: 100% cancel fee of the tour price, per person, no refund.

### **TRAVEL INSURANCE:**

To protect against cancellation charges, optional travel insurance is recommended and is available thru N & K Travel Service. Coverage and rates for travel insurance may vary by state. Rates are subject to change. For more information, please call our office or email us.

**MILEAGE:**

N & K Travel Service will provide your mileage numbers on your tour form to the airline, however, we will not be responsible for missing credit. Also, if you are not a member of a mileage program, we will not be responsible for your enrollment. Please keep all your boarding passes & "E" ticket until you get your mileage from the airlines.

**GRATUITIES:**

Gratuities for the bilingual local guide, bus driver & guide are **not included**.

**Tips: Japan Guide, Ms. Akiko Sasaki from 3/3-3/12 : ¥6000 for 10 days per person \*\***

**Bus Driver from 3/4-3/12: ¥4000 for 9 days per person**

Local Tour Guide from Honolulu, monetary tips are greatly appreciate it.

**PASSPORTS:**

All clients are reminded that a valid passport is necessary in all cases. The cost of obtaining these documents will be the responsibility of the traveler. The organizer assumes no responsibility whatsoever, should a client, for any reason be refused entry into any particular country, and the subsequent costs entailed will have to be met by traveler in accordance with obligations that the organizer has in virtue of the contracts held with third parties.

Passport must be valid within 6 months at time of departure.

A photo copy of your passport is required for all tours.

**IF THE TOUR OPERATOR CANCELS:**

Should N & K Travel Service, Inc. cancel a departure for any reason, your money will be fully refunded.

**CHANGES IN ITINERARIES:**

N & K Travel Service, Inc. will make every effort to operate all tours as disclosed in this document. However, circumstances may arise which would require an adjustment to the tour. We will however do all that is possible to avoid such changes, but we must reserve the right to make such modifications if they are determined to be necessary.

**RESPONSIBILITY:**

This travel agency and/or its agents, sub-agents, sub-offices and affiliates act only as agents for the owners and contractors providing means of transportation or other services and all tickets and/or vouchers are issued subject to any terms and conditions under which such means of transportation or other services were offered or provided. The issuance and acceptance of such tickets and/or vouchers shall be deemed to be consent to the further conditions that this travel agency, its agents, sub-agents, sub-offices and affiliates shall not become liable or responsible in any way in connections with such means of transportation or other services, or for any loss, injury or damages arising from the default of a tour operator/carrier, lost/damaged baggage, trip cancellation, bad weather, natural disaster or other acts of God. We reserve the right to cancel any tour 100 days or more prior to departure date. All rates in this brochure/itinerary are subject to change without notice.

