



# XL BEEF

— Est. 1995 —



ANGUS

**Bull & Female Sale, 5th August 2026, 1pm**  
34 Back Woolomin Rd, Dungowan, NSW

*Power & Performance Genetics*



**XL BEEF**  
— Est. 1995 —



### CONTACTS

Nathan Steinbeck 0467 694 256

Alex Steinbeck 0407 326 631

### **BULL & FEMALE SALE 5TH AUGUST 2026, 1PM**

Offering 12 x V Bulls 23 – 28 months

14 x W Bulls 15 - 19 months

12 x V Heifers PTIC

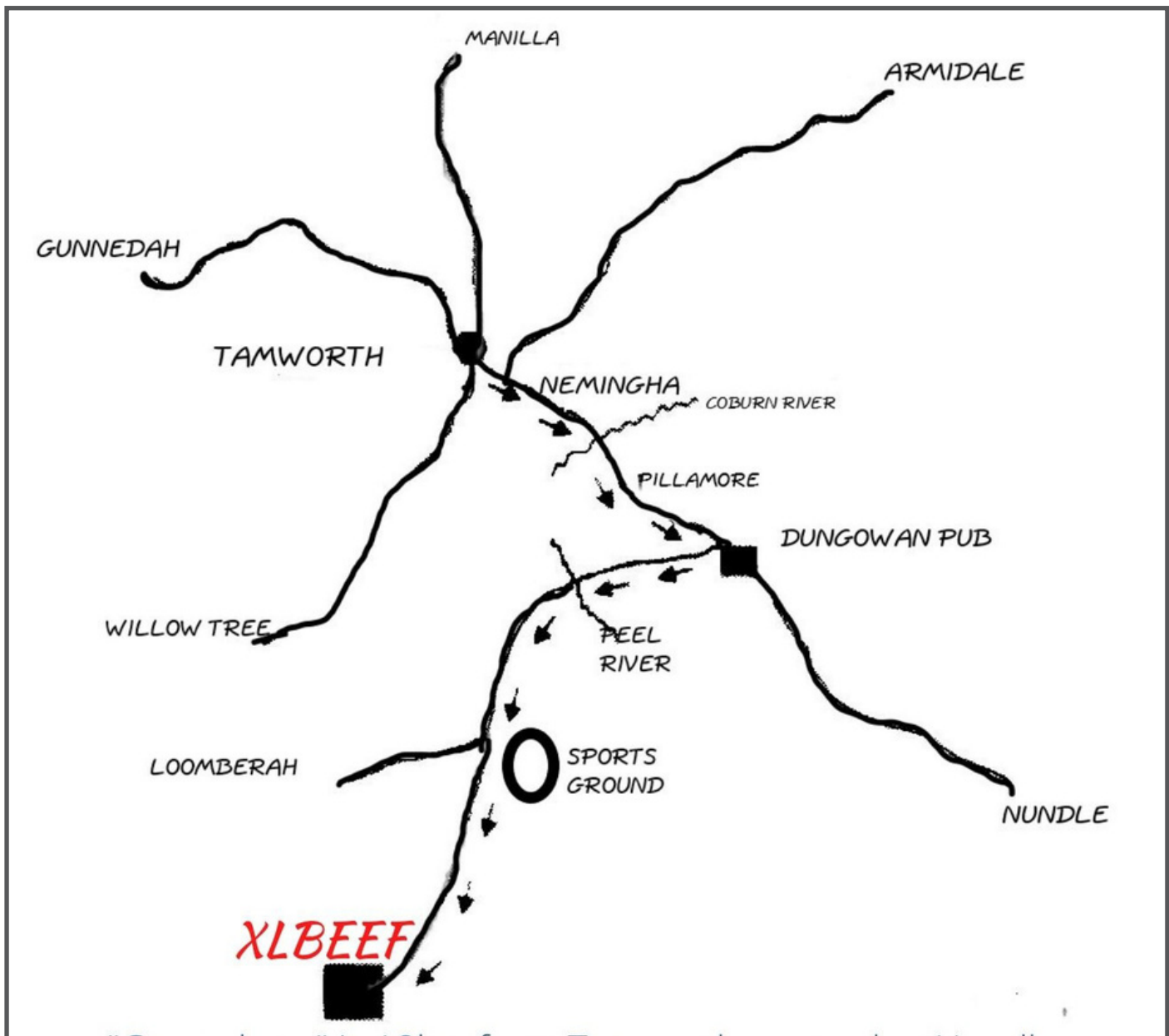
34 Back Woolomin Rd, Dungowan, NSW



## WHERE TO FIND US

'Gowanbrae' is 18km from Tamworth on road to Nundle.

Turn at Dungowan Pub, follow road on to dirt, sale approximately 2kms from pub.



AGENTS

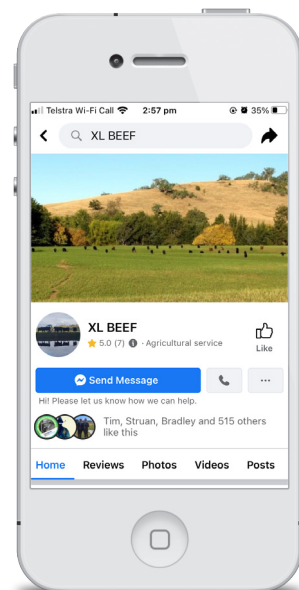
Marcus Bower 0448 547 668

Mitchell Swain 0429 446 952



AuctionsPlus

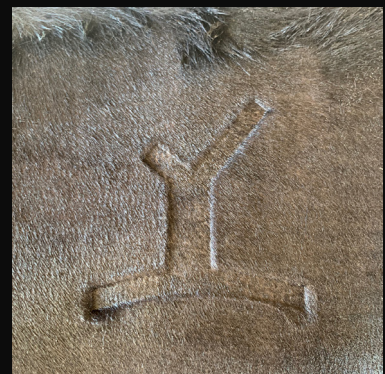
Like and Follow  
**XL BEEF** on  
Facebook and  
Instagram





# STEINBECK

## FREEZE BRANDING



## WELCOME TO XLBEEF ANGUS

XLBEEF ANGUS is a family-owned local stud that was established in 1995. Since then we have based our herd on the best Angus genetics from around the world through AI and ET and now IVF. With regular contacts with overseas company's enables us to keep up with the latest genetics which we make available through our semen company EXCEL GENETICS, we are able to source the best high performing Angus genetics from USA, and right here is Australia.

On sale day XLBEEF ANGUS will be offering power and performance Angus bulls which will fit a wide range of breeding programs. With sires such as, CONNEALY CRAFTSMAN, PINE VIEW VEZINA, MONTANA ELEVATION 7108, SQUARE B TRUE NORTH.

This year we have a very impressive line of heifers AI,ed to Clunie Range Untouchable

Pine View Vezina and RC Lucchese then backed up with Ben Nevis Ventura V477.

All sale cattle have been GEONOMIC'S tested with some outstanding results with a large percentage of the draft testing in the top 20 % of the Angus breed for multiple performance traits. This has given us great confidence in our breeding program and the animals we aim to produce for our clients.

So please join us for REFRESHMENTS / LUNCH which will be available free of charge.

From all the team at XLBEEF ANGUS, we hope to see you on sale day. WEDNESDAY 5th AUGUST 2026 1pm

Nathan Steinbeck: 0467 694 256

Geoff Steinbeck: 0427 056 017

E: [steinab@bigpond.com](mailto:steinab@bigpond.com)

[www.excelgenetics.com.au](http://www.excelgenetics.com.au)

## SALE DAY SAFETY

All the sale animals have been screened for temperament and are quiet to handle under normal circumstances. As shown at our on farm field day, however there are inherent risks associated with cattle handling.

So please be aware sale day places extraordinary pressure on the cattle which may make them act differently then normal. If you would like help going through the bulls please ask.

**VISITORS ENTER THE CATTLE PENS AT THEIR OWN RISK!**

**CHILDREN UNDER 16 YEARS ARE NOT PERMITTED IN PENS UNLESS ACCOMPANIED BY AN ADULT.**

## TAKING NEW ANIMAL HOME

To help your new animal settle into their new home as well as possible, we recommend the following:

Our cattle run in a mob they have never been on their own. So it is a good idea to have cattle in our own yards when your new animal is delivered, to lower stress on the animal until they adjust to their new surroundings.

They don't like being on their own.



## **SALE INFORMATION**

### **INSPECTION**

Animals will be on display from 9.30 on the morning of the sale.

### **HEALTH**

Bulls have been 7in1 / Vibrovax x 2 / Pestigard x 2 3 Day Sickness x 2 & Multimin Evolution

Bulls semen tested and undergone morphology test.

Females have had 7in1 / Pestigard vaccine plus

Multimin Evolution

All animals have been 50k & DNA tested.

### **INSURANCE**

There is no vendor insurance on the cattle sold.

Buyers are reminded that it is their responsibility from the fall of the hammer to organise insurance.

### **DISCLAIMER**

Every care has been taken during the compilation of the catalogue to ensure the accuracy of information supplied. However, no responsibility will be accepted for any errors that may have occurred.

### **PHONE BIDS**

Mobile service is available on property. Please contact your agent to arrange this.

### **SELLING SYSTEM**

On property auction. Cattle remaining in yards.

TVs will have video of cattle lots. Auctions Plus and Phone bidding if arranged.

### **REGISTRATION TRANSFER**

Upon the request of the purchaser, XLBEEF are happy to transfer purchases free of charge.

### **PUBLIC LIABILITY**

Any person attending the sale does so at his/her own risk. All persons attending the sale release the vendor from all actions or demands due to any loss, death, damage or injury occurring on the premises. The vendor is not responsible and has no liability for any death or injury to any person or any loss or damage to any person attending the sale, their property or otherwise.

# TRANSTASMAN ANGUS CATTLE EVALUATION - JULY 2025 REFERENCE TABLES

## BREED AVERAGE EBVS

Brd Avg	Calving Ease		Birth				Growth				Fertility				Carcase				Other				Structure				SelectionIndexes			
	Less Diffculty	More Diffculty	CEDir	CEDtrs	GL	BW	200	400	600	MCW	MBC	MCH	Milk	SS	DTC	CWT	EMA	RIB	P8	RBV	IMF	NFI-F	DOC	Claw	Angle	Leg	\$A	\$A-L		
	+2.2	+3.0	-4.5	+3.9	+52	+93	+120	+102	+0.27	+0.81	+17	+2.2	-4.8	+6.5	+0.1	-0.2	+0.4	+2.5	+0.23	+21	+0.83	+0.96	+1.02	+205	+351					

\* Breed average represents the average EBV of all 2023 drop Australian Angus and Angus-influenced seedstock animals analysed in the July 2025 TransTasman Angus Cattle Evaluation.

## PERCENTILE BANDS TABLE

	Calving Ease		Birth				Growth				Fertility				Carcase				Other				Structure				SelectionIndexes			
	Less Diffculty	More Diffculty	CEDir	CEDtrs	GL	BW	200	400	600	MCW	MBC	MCH	Milk	SS	DTC	CWT	EMA	RIB	P8	RBV	IMF	NFI-F	DOC	Claw	Angle	Leg	\$A	\$A-L		
1%	+10.3	+10.0	-10.6	-0.7	+72	+127	+166	+167	+0.62	+13.1	+31	+51	-9.5	+15.6	+4.4	+5.6	+2.0	+6.6	-0.63	+45	+0.40	+0.60	+0.70	+0.70	+0.70	+291	+471			
5%	+8.8	+8.6	-8.8	+0.7	+66	+117	+152	+146	+0.53	+11.6	+27	+4.2	-8.1	+12.8	+3.1	+3.7	+1.5	+5.4	-0.36	+38	+0.54	+0.70	+0.70	+0.80	+0.80	+269	+439			
10%	+7.8	+7.6	-7.8	+1.4	+63	+112	+145	+135	+0.47	+10.8	+24	+3.7	-7.4	+11.4	+2.3	+2.8	+1.2	+4.8	-0.23	+34	+0.60	+0.76	+0.76	+0.86	+0.86	+257	+423			
15%	+7.0	+7.0	-7.2	+1.9	+61	+108	+140	+128	+0.44	+10.3	+23	+3.4	-6.9	+10.5	+1.9	+2.2	+1.1	+4.3	-0.13	+31	+0.64	+0.80	+0.80	+0.88	+0.88	+249	+412			
20%	+6.3	+6.4	-6.7	+2.3	+59	+105	+137	+123	+0.41	+9.9	+22	+3.1	-6.5	+9.8	+1.5	+1.8	+0.9	+4.0	-0.06	+29	+0.68	+0.84	+0.84	+0.92	+0.92	+242	+403			
25%	+5.7	+5.9	-6.3	+2.6	+58	+103	+133	+119	+0.39	+9.5	+21	+2.9	-6.2	+9.1	+1.2	+1.4	+0.8	+3.7	+0.00	+27	+0.70	+0.86	+0.86	+0.94	+0.94	+237	+395			
30%	+5.2	+5.4	-5.9	+2.9	+56	+101	+131	+115	+0.37	+9.2	+20	+2.8	-5.9	+8.6	+0.9	+1.0	+0.7	+3.4	+0.05	+26	+0.74	+0.88	+0.88	+0.96	+0.96	+232	+388			
35%	+4.7	+4.9	-5.6	+3.1	+55	+99	+128	+112	+0.35	+8.9	+20	+2.6	-5.7	+8.1	+0.7	+0.7	+0.6	+3.2	+0.10	+24	+0.76	+0.90	+0.90	+0.96	+0.96	+227	+382			
40%	+4.1	+4.5	-5.3	+3.3	+54	+98	+126	+108	+0.33	+8.6	+19	+2.5	-5.4	+7.6	+0.5	+0.4	+0.5	+3.0	+0.15	+23	+0.78	+0.92	+0.92	+0.98	+0.98	+222	+376			
45%	+3.6	+4.1	-4.9	+3.6	+53	+96	+124	+105	+0.31	+8.4	+18	+2.3	-5.2	+7.2	+0.3	+0.1	+0.5	+2.7	+0.19	+22	+0.80	+0.94	+0.94	+1.00	+1.00	+218	+370			
50%	+3.1	+3.6	-4.6	+3.8	+52	+94	+121	+102	+0.30	+8.1	+18	+2.2	-5.0	+6.8	+0.0	-0.2	+0.4	+2.5	+0.23	+21	+0.82	+0.96	+0.96	+1.02	+1.02	+214	+364			
55%	+2.5	+3.2	-4.3	+4.0	+51	+93	+119	+99	+0.28	+7.9	+17	+2.1	-4.8	+6.3	-0.2	-0.5	+0.3	+2.3	+0.28	+20	+0.86	+0.98	+0.98	+1.04	+1.04	+209	+357			
60%	+2.0	+2.7	-4.0	+4.2	+50	+91	+117	+96	+0.26	+7.6	+16	+1.9	-4.6	+5.9	-0.4	-0.8	+0.2	+2.1	+0.33	+18	+0.88	+1.00	+1.00	+1.04	+1.04	+205	+351			
65%	+1.4	+2.2	-3.7	+4.5	+49	+89	+114	+93	+0.25	+7.3	+16	+1.8	-4.3	+5.5	-0.6	-1.1	+0.1	+1.9	+0.37	+17	+0.90	+1.02	+1.02	+1.06	+1.06	+200	+344			
70%	+0.7	+1.6	-3.3	+4.7	+48	+87	+112	+89	+0.23	+7.1	+15	+1.7	-4.1	+5.1	-0.8	-1.4	+0.0	+1.7	+0.42	+16	+0.92	+1.04	+1.04	+1.08	+1.08	+195	+337			
75%	-0.1	+1.0	-3.0	+5.0	+47	+85	+109	+85	+0.21	+6.8	+14	+1.5	-3.8	+4.6	-1.1	-1.8	-0.1	+1.5	+0.48	+14	+0.96	+1.08	+1.08	+1.10	+1.10	+189	+328			
80%	-1.0	+0.2	-2.6	+5.3	+45	+83	+106	+81	+0.18	+6.4	+13	+1.3	-3.6	+4.0	-1.4	-2.2	-0.2	+1.2	+0.54	+13	+1.00	+1.10	+1.10	+1.12	+1.12	+182	+319			
85%	-2.1	-0.7	-2.1	+5.6	+44	+81	+103	+76	+0.16	+6.0	+12	+1.1	-3.2	+3.4	-1.7	-2.6	-0.3	+1.0	+0.61	+11	+1.02	+1.14	+1.14	+1.16	+1.16	+174	+307			
90%	-3.7	-2.0	-1.4	+6.1	+41	+77	+98	+70	+0.12	+5.5	+11	+0.9	-2.8	+2.5	-2.2	-3.2	-0.5	+0.6	+0.71	+9	+1.08	+1.18	+1.18	+1.18	+1.18	+163	+291			
95%	-6.2	-4.0	-0.5	+6.8	+38	+72	+91	+60	+0.07	+4.7	+9	+0.5	-2.2	+1.3	-2.9	-4.2	-0.8	+0.1	+0.86	+5	+1.16	+1.24	+1.24	+1.24	+1.24	+146	+266			
99%	-11.7	-8.4	+1.5	+8.2	+32	+62	+76	+40	-0.03	+3.0	+5	-0.4	-0.9	-1.2	-4.2	-6.0	-1.3	-0.8	+1.14	-1	+1.30	+1.38	+1.38	+1.34	+1.34	+108	+210			
	More Diffculty	More Diffculty	Longer Gestation Length	Heavier Birth Weight	Lighter Live Weight	Lighter Live Weight	Lighter Mature Weight	Lighter Mature Weight	Lower Body Condition	Shorter Mature Height	Lighter Live Weight	Smaller Scrotal Size	Longer Time to Calving	Lighter Carcase Weight	Smaller EMA	Less Fat	Less Fat	Lower Yield	Less IMF	Lower Feed Efficiency	Less Docile	More Curl	Less Heel Depth	More Angular	Lower Profitability	Lower Profitability				

\* The percentile bands represent the distribution of EBVs across the 2022 drop Australian Angus and Angus-influenced seedstock animals analysed in the June 2026 TransTasman Angus Cattle Evaluation.

# QUICK EBV REFERENCE TABLE LOTS

Animal Ident	Calving Ease/Birth			Growth						Fertility				Carcass						Feed		Temp.			Structural			Selection Indexes	
	CEDir	CEDirs	GL	BWT	200	400	600	MCW	MBC	MCH	Milk	SS	DTC	CWT	EMA	RIB	P8	RBY	IMF	NFI/F	Doc	Claw	Angle	Leg	SA	SA-L			
NVN25W18	+6.1	+8.3	-3.8	+2.3	+62	+105	+124	+98	+0.42	+7.5	+20	+2.3	-4.5	+70	+11.2	+0.9	+1.6	+0.3	+3.0	-0.19	+24	+0.94	+0.90	+0.78	\$264	\$429			
NVN25W12	+4.4	+6.1	-4.7	+4.2	+58	+104	+130	+94	+0.30	+7.7	+16	+3.6	-6.8	+75	+8.5	+2.4	+2.9	-0.4	+3.4	+0.27	+9	+0.66	+0.72	+0.90	\$269	\$435			
NVN25W8	-1.3	+2.1	-3.9	+5.2	+76	+122	+153	+146	+0.36	+8.9	+8	+3.3	-4.0	+79	+15.0	-0.1	+0.0	+0.3	+2.7	+0.09	+17	+0.76	+0.96	+1.08	\$261	\$445			
NVN25W19	+3.6	+3.2	-6.3	+4.5	+67	+115	+143	+123	+0.46	+7.6	+15	+2.8	-7.7	+83	+10.5	-0.5	-2.9	+1.1	+1.8	+0.31	+20	+0.56	+0.74	+0.90	\$281	\$465			
NVN25W21	+2.2	+5.3	+1.6	+5.3	+66	+110	+130	+100	+0.34	+4.0	+20	+2.1	-5.4	+83	+14.1	+0.3	-0.9	+0.8	+1.9	+0.08	-5	+0.72	+0.80	+1.06	\$273	\$431			
NVN25W13	+7.4	+2.4	-4.3	+2.2	+54	+102	+128	+91	+0.27	+6.7	+17	+3.8	-6.4	+66	+14.4	+2.6	+1.7	+0.7	+4.0	+0.45	+10	+0.66	+0.62	+0.74	\$283	\$445			
NVN25W1	+3.5	+6.6	-8.2	+2.7	+56	+107	+126	+93	+0.05	+5.5	+19	+1.6	-7.6	+68	+13.9	-2.3	-4.4	+1.2	+3.7	+0.58	+28	+0.96	+1.06	+0.88	\$288	\$452			
NVN24V64	-2.8	+3.6	-1.9	+4.8	+49	+92	+121	+110	+0.30	+7.8	+14	+1.1	-5.5	+81	+8.7	+1.6	+0.7	-0.3	+5.1	+0.67	+5	+0.76	+0.80	+0.90	\$215	\$361			
NVN24V20	+3.3	+9.4	-5.6	+2.6	+51	+88	+103	+57	+0.22	+8.5	+17	+4.1	-7.6	+52	+10.0	+1.3	-0.3	+0.0	+4.0	+0.35	+30	+0.96	+0.74	+0.70	\$265	\$401			
NVN24V47	+8.6	+7.1	-7.9	+1.5	+43	+89	+107	+77	+0.08	+6.4	+29	+1.2	-4.1	+53	+10.5	+3.6	+4.2	+0.4	+2.9	+0.24	+15	+0.68	+1.06	+1.24	\$229	\$370			
NVN24V57	+2.0	+3.9	-1.9	+4.6	+61	+105	+132	+96	+0.26	+4.5	+17	+1.2	-5.2	+82	+2.3	-0.2	-0.5	-0.4	+1.8	+0.51	+16	+1.10	+0.84	+0.88	\$224	\$371			
NVN24V70	-2.4	-2.3	-3.7	+6.1	+61	+106	+127	+120	+0.48	+7.7	+18	+4.1	-8.0	+69	+11.8	-3.1	-3.9	+1.6	+2.0	-0.35	+20	+0.98	+0.90	+0.94	\$249	\$412			
NVN24V79	+7.4	+4.8	-9.7	+3.9	+60	+107	+129	+113	+0.29	+6.4	+25	+0.5	-9.0	+76	+10.0	+0.7	+2.3	+0.3	+1.4	+0.43	+22	+0.82	+0.92	+0.84	\$276	\$460			
NVN24V49	+4.0	+7.2	-7.2	+2.3	+46	+79	+102	+55	-0.04	+5.6	+23	+1.4	-3.3	+59	+1.8	+2.0	+1.1	-0.8	+3.1	+0.68	+13	+1.02	+1.12	+0.96	\$188	\$298			
NVN24V72	-0.1	+8.0	-4.1	+4.0	+49	+95	+124	+104	+0.21	+7.8	+22	+1.0	-5.1	+78	+10.1	+0.1	+0.1	+0.3	+2.3	+0.20	-4	+0.98	+0.84	+0.92	\$209	\$359			
NVN24V71	+0.4	-0.5	-3.5	+4.2	+60	+99	+118	+87	+0.10	+6.2	+21	+1.1	-5.1	+68	+4.6	+0.9	+0.5	-0.4	+1.5	-0.33	+27	+0.90	+0.98	+0.94	\$214	\$346			
NVN24V84	-4.0	-5.4	-6.3	+7.5	+67	+123	+154	+144	+0.40	+9.9	+17	+1.1	-6.6	+88	+3.2	+0.1	+0.5	-1.3	+2.7	+0.04	+24	+0.56	+0.90	+1.02	\$215	\$387			
NVN24V86	+7.3	+2.3	-5.3	+2.2	+47	+80	+100	+89	+0.30	+7.6	+16	+4.0	-5.9	+48	+3.8	+1.7	+2.1	-1.0	+3.8	+0.50	+27	+0.52	+0.82	+0.88	\$188	\$333			
NVN24V88	+5.9	+7.9	-4.5	+1.0	+47	+97	+108	+62	+0.24	+6.4	+26	+1.4	-7.0	+64	+11.0	+0.4	+1.4	+0.4	+3.7	+1.21	+31	+0.74	+0.80	+0.76	\$276	\$422			
NVN25W26	+4.2	-5.7	-6.8	+2.8	+32	+66	+87	+76	+0.39	+9.3	+15	+0.8	-4.4	+45	+2.8	+4.4	+3.4	-1.0	+4.6	+0.19	+2	+1.00	+0.82	+0.88	\$147	\$258			
NVN25W27	+2.0	-5.4	-8.0	+4.9	+50	+94	+129	+147	+0.45	+10.1	+9	+1.7	-2.7	+66	+5.3	+1.4	+0.3	-0.6	+4.1	+0.39	+8	+1.18	+1.08	+0.90	\$150	\$312			
NVN25W32	+0.6	-4.4	-3.0	+4.7	+52	+100	+130	+101	+0.13	+6.7	+22	+3.4	-5.8	+72	+6.7	+1.1	+0.5	+0.3	+0.5	+0.58	+16	+0.56	+0.56	+0.68	\$197	\$339			
NVN25W31	+9.0	+0.9	-7.5	+0.2	+44	+83	+100	+50	+0.15	+3.9	+22	+3.2	-6.7	+60	+9.6	+3.0	+5.1	-0.5	+2.7	+0.98	+0	+0.86	+0.58	+0.68	\$235	\$359			
NVN25W47	+4.3	+2.9	-3.8	+3.5	+62	+111	+139	+111	+0.36	+8.0	+20	+2.7	-4.7	+81	+8.9	-0.7	+0.3	+0.0	+2.3	+0.29	+22	+0.86	+0.86	+0.88	\$242	\$408			
NVN25W33	-8.1	+3.5	+0.4	+7.1	+59	+101	+115	+88	+0.13	+6.6	+17	+0.6	-6.9	+60	+10.8	-1.4	-0.8	-0.1	+5.3	+0.81	+10	+0.78	+0.86	+0.78	\$248	\$381			

# QUICK EBV REFERENCE TABLE LOTS

Animal Ident	Calving Ease/Birth			Growth						Fertility				Carcase				Feed		Temp.			Structural			Selection Indexes	
	CEDir	CEDirs	GL	BWT	200	400	600	MCW	MBC	MCH	Milk	SS	DTC	CWT	EMA	RIB	P8	RBY	IMF	NFLF	Doc	Claw	Angle	Leg	\$A	\$A-L	
NVN25W37	-	-	-	-	-	-	-	-	-	-	-	-	-	-	-	-	-	-	-	-	-	-	-	-	-	-	-
NVN24V75	+6.7	-7.6	-3.2	+5.1	+67	+116	+151	+119	+0.20	+6.5	+20	+2.9	-5.5	+101	+5.2	+0.6	-0.5	+0.3	+1.8	+0.42	+16	+0.70	+0.88	+1.08	\$244	\$406	
NVN24V93	-4.5	+7.8	-1.9	+6.3	+61	+102	+118	+76	+0.16	+5.7	+20	+0.7	-5.8	+72	+11.4	-0.5	+0.8	+1.0	+2.5	+0.19	+25	+0.90	+0.96	+1.16	\$275	\$401	
NVN24V95	+1.2	+7.9	-7.9	+4.6	+67	+124	+163	+149	+0.30	+8.6	+18	+3.6	-6.4	+94	+6.9	-0.7	-2.4	-0.1	+3.1	+0.49	+14	+0.90	+0.66	+0.92	\$251	\$452	
NVN24V67	+3.3	+5.6	-4.3	+3.2	+52	+96	+122	+129	+0.37	+11.0	+14	+2.0	-8.1	+80	+0.5	+3.2	+2.3	-0.9	+4.2	+0.85	+20	+1.12	+0.94	+1.12	\$220	\$404	
NVN24V77	+6.2	+5.0	-3.5	+1.1	+49	+94	+113	+101	+0.16	+6.2	+19	+2.4	-4.1	+62	+7.6	+1.0	+0.5	-0.1	+1.8	-0.15	+25	+1.10	+0.88	+0.96	\$188	\$343	
NVN24V74	+4.1	+5.1	-6.9	+2.4	+45	+86	+113	+103	+0.25	+8.3	+9	-0.1	-5.8	+60	-0.4	+3.4	+6.1	-1.6	+3.2	+0.78	-2	+1.04	+0.80	+1.02	\$189	\$345	
NVN24V69	+3.4	+6.1	-3.3	+2.1	+56	+103	+127	+111	+0.28	+6.8	+14	+1.5	-5.4	+81	+5.9	+1.5	+0.5	+0.0	+2.2	-0.07	+11	+1.20	+0.86	+0.88	\$225	\$392	
NVN24V87	+3.2	+3.4	-4.9	+2.6	+51	+94	+122	+69	+0.11	+5.7	+19	+1.0	-5.9	+74	+10.8	-1.0	-2.0	+0.3	+4.7	+0.81	+13	+0.96	+0.98	+0.84	\$264	\$397	
NVN24V94	-11.6	+2.7	-1.3	+6.2	+57	+92	+118	+85	+0.35	+7.0	+20	+0.7	-6.6	+70	+12.5	+0.8	+1.9	+0.3	+3.9	+0.12	+16	+0.84	+0.94	+1.04	\$243	\$353	
NVN24V91	-1.8	+6.8	-4.2	+4.9	+52	+88	+105	+72	+0.23	+6.5	+15	-0.1	-4.5	+63	+9.8	+2.5	+2.8	+0.4	+2.4	+0.12	+16	+1.12	+1.04	+1.18	\$234	\$353	
NVN24V85	-0.3	-6.9	-4.9	+4.4	+56	+105	+127	+98	+0.36	+6.5	+16	+2.9	-7.8	+72	+3.3	+0.2	+1.6	-0.6	+1.9	+0.54	+5	+0.94	+1.02	+0.98	\$222	\$369	
NVN24V89	+2.5	-1.2	-5.2	+3.7	+53	+97	+113	+93	+0.37	+9.2	+19	+2.8	-3.1	+66	+10.2	-0.7	+0.1	+0.5	+1.6	+0.68	+3	+1.04	+0.94	+1.04	\$198	\$332	



# QUICK EBV REFERENCE TABLE REFERENCE SIREs

REFERENCE SIRE	Calving Ease/Birth			Growth						Fertility			Carcass					Feed			Structural			Selection Indexes		
	CEDir	CEDirs	GL	BWT	200	400	600	MCW	MBC	MCH	Milk	SS	DTC	CWT	EMA	RIB	P8	RBY	IMF	NFI-F	Doc	Claw	Angle	Leg	\$A	\$A-L
3RLS POWERPOINT S020	+6.8	+9.1	-4.2	+0.2	+47	+94	+120	+92	+0.15	+7.1	+22	+0.5	-5.9	+81	+7.2	+3.0	+2.3	-0.7	+4.6	+0.49	-5	+1.12	+0.88	+1.00	\$237	\$398
ALPINE 38 SPECIAL S021	+4.0	+9.1	-8.5	+2.8	+82	+97	+132	+92	+0.31	+8.2	+21	+3.6	-6.8	+63	+7.6	+3.0	+1.4	-0.6	+4.1	+0.15	+23	+0.48	+0.56	+0.82	\$250	\$412
CONNELLY CRAFTSMAN	-0.1	+7.4	-5.5	+3.9	+63	+109	+124	+74	+0.16	+4.2	+25	+0.5	-8.5	+79	+9.9	-0.3	+0.6	+0.2	+2.7	+0.49	+24	+0.64	+0.78	+0.82	\$304	\$451
EXAR STOCK FUND 9097B	+0.2	+3.7	-3.8	+2.9	+67	+114	+148	+140	+0.24	+5.4	+13	+0.8	-3.1	+89	+9.7	-2.1	-3.4	+0.6	+0.8	-0.41	+43	+1.04	+0.90	+1.04	\$207	\$377
HART NETWORK	+3.8	+3.3	-2.2	+4.7	+76	+127	+149	+115	+0.44	+4.7	+13	+2.5	-5.6	+89	+12.8	+1.0	+0.4	-0.1	+3.7	-0.06	+6	+0.64	+0.74	+0.76	\$309	\$491
MYERS FAIR-N-SQUARE M39	+1.4	-5.4	-9.7	+4.7	+69	+126	+154	+121	+0.49	+10.4	+22	+1.6	-6.8	+81	+7.7	+0.8	+1.3	-0.6	+1.8	+0.07	+21	+0.90	+0.80	+0.80	\$262	\$433
SCHIEFELBEIN ATTRACTIVE 4565	-1.5	-0.7	-2.7	+5.1	+69	+115	+150	+108	+0.27	+7.7	+20	+2.3	-3.0	+91	+5.8	-3.2	-3.7	+0.2	+1.0	+0.58	+23	+0.96	+0.86	+0.76	\$213	\$352
SQUARE B TRUE NORTH 8052	+6.4	+6.4	-8.4	+0.9	+55	+103	+126	+78	+0.08	+4.1	+27	+1.9	-3.8	+73	+9.9	+2.8	+2.6	-0.4	+2.9	+0.40	+29	+0.78	+0.90	+0.98	\$244	\$390
TEHAMA TESTAMENT	+8.5	+3.7	-4.5	+2.3	+56	+99	+119	+84	+0.20	+7.0	+16	+5.1	-5.5	+63	+7.9	+0.9	+1.4	-0.3	+2.5	+0.85	+26	+0.72	+0.82	+0.88	\$233	\$386
XLBEEF FIREBALL S14	+0.2	+6.9	-5.7	+4.7	+62	+103	+125	+117	+0.39	+5.6	+16	+3.3	-7.8	+63	+10.6	-0.4	-2.3	+0.0	+4.7	+0.46	+5	+1.14	+0.86	+0.90	\$261	\$435
XLBEEF GUNSMOKE P8	-2.4	+1.0	-5.1	+5.3	+48	+83	+106	+80	+0.14	+8.8	+16	+0.1	-5.1	+72	+5.0	+0.1	+0.4	+0.2	+2.1	+0.50	+1	+1.06	+0.78	+0.94	\$192	\$306





# *Rabobank is proud to support the XL Angus Sale*

***We're an agribusiness bank.***

*Our local teams live and work where you do, and are  
passionate about the future of rural communities.*

***Call your local Tamworth team***  
**02 5711 1010**



**AI  
Sire**



**CLUNIE RANGE UNTOUCHABLE U441**

**Id:** NBH23U441    **DOB:** 30/1/2023    **Bull Code:** 151AN02086

*Genetic Conditions:* AMF, CAF, DDF, NHF, DWF, MAF, MHF, OHF, OSF, RGF

BALDRIDGE BEASTMODE P392

**Sire:** CLUNIE RANGE PLANTATION P392

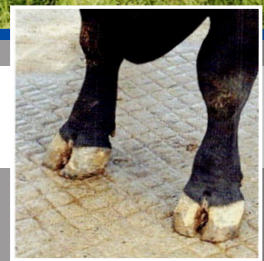
CLUNIE RANGE NAOMI M516

WEERAN M106

**Dam:** CLUNIE RANGE BARUNAH Q309

CLUNIE RANGE BARUNAH L421

**ACTUALS:**  
BW 35kg  
WW 225kg  
SC 45cm  
Frame 6



**MID JUNE 2026 TRANSTASMAN ANGUS CATTLE EVALUATION**

TACE	CEDir	CEDtrs	GL	BW	200	400	600	MCW	MBC	MCH	Milk	SS	DC
EBV	-0.9	+7.4	-1.4	+3.5	+61	+110	+140	+109	+0.41	+8.4	+20	+4.4	-5.8
Acc	70%	62%	83%	83%	84%	82%	83%	81%	73%	83%	77%	80%	49%
Perc	80	12	90	43	14	13	16	40	22	46	29	4	32

TACE	CWT	EMA	Rib	P8	RBV	IMF	NFI-F	Doc	Claw	Angle	Leg	INDEXES	
EBV	+75	+6.8	+0.4	+0.3	+0.0	+3.9	+0.05	+34	+0.40	+0.70	+0.72	\$A	\$A-L
Acc	74%	73%	73%	73%	64%	77%	66%	79%	68%	68%	66%	\$255	\$419
Perc	34	50	41	41	69	21	30	9	1	4	2	11	12

Traits Observed: 400WT,600WT,SC,Scan(EMA,IMF),Genomics

- ✓ Clunie Range Untouchable U441 purchased for \$300,000 by Featherstone Angus, Victoria, Twin Oaks Angus, NZ, Ranui Angus, NZ and Mandayen Angus and Limousins, Sth Australia making him the highest priced bull sold in Australia in 2025 and one of the most widely used bulls in spring 2025 and autumn 2026.
- ✓ U441 has terrific structure with tremendous depth and shape. He has strong Angus head with a broad muzzle and kind eye, with impeccable temperament.
- ✓ Untouchable offers excellent data, but it is his structural soundness, temperament and mobility that will see high demand for this outstanding stud sire, in the seedstock and commercial industry.
- ✓ A fault free sire upon inspection, he has impressed the many astute breeders who have inspected him. Excellent feet and phenotype combined with the one consistent comment "He is such a docile bull"

# AI Sire



RC Lucchese L101



Sire: Tehama Patriarch F028



Patriarch Son: Kramers Bishop 002

## RC LUCCHESE L101

**Id:** 29AN2339 **DOB:** 15/2/2023 **REG NO.:** USA20827851

*Genetic Conditions: AMF,CAF,DDF,NHF,DWF,MAF,MHF,OHF,OSF,RGF*

S S NIAGARA Z29

**Sire: TEHAMA PATRIARCH F028**

TEHAMA ELITE BLACKBIRD D826

GDAR JUSTIFIED 914

**Dam: RC BLACKBIRD J101**

RC BLACKBIRD G111

**ACTUALS:**  
 BW 35kg  
 WW 315kg  
 YW 554kg  
 Wgt 24 mths 812kg  
 SC 36cm

### MID JUNE 2026 TRANSTASMAN ANGUS CATTLE EVALUATION

TACE	CEDir	CEDtrs	GL	BW	200	400	600	MCW	MBC	MCH	Milk	SS	DC
<b>EBV</b>	<b>+10.9</b>	<b>+9.4</b>	<b>-6.4</b>	<b>+1.4</b>	<b>+60</b>	<b>+121</b>	<b>+143</b>	<b>+114</b>	<b>+0.34</b>	<b>+4.3</b>	<b>+17</b>	<b>+2.2</b>	<b>-5.2</b>
Acc	67%	56%	82%	85%	86%	85%	84%	82%	67%	78%	79%	82%	41%
Perc	1	3	24	10	16	3	13	32	39	97	55	49	45

TACE	CWT	EMA	Rib	P8	RBY	IMF	NFI-F	Doc	Claw	Angle	Leg	INDEXES	
<b>EBV</b>	<b>+80</b>	<b>+8.4</b>	<b>+0.5</b>	<b>+0.2</b>	<b>+0.2</b>	<b>+2.6</b>	<b>+0.36</b>	<b>+24</b>	<b>+0.56</b>	<b>+0.76</b>	<b>+0.84</b>	<b>\$A</b>	<b>\$A-L</b>
Acc	77%	76%	73%	71%	65%	78%	60%	76%	88%	87%	64%	<b>\$264</b>	<b>\$452</b>
Perc	21	32	39	43	58	48	64	36	7	9	8	7	3

#### Traits Observed: Genomics

- ✓ Lucchese is the Heir Apparent, prepared to assume the throne from his legendary sire Patriarch
- ✓ In a word, Additive. Added performance, added end product added maternal and \$Maternal, added phenotype and added docility
- ✓ The maternal side of his pedigree brings absolutely everything Gartner-Denowh and the GDAR prefix imply in terms of form and function - They are the right kind
- ✓ Lucchese stands on a big sound foot for a calving ease bull with added bone and substance
- ✓ Recent inspection of Lucchese in Montana has reaffirmed our position that he is arguably THE BEST Patriarch son to have emerged in the US, period.
- ✓ Lucchese is immaculately well balance, with excellent feet and carries all the favourable characteristics of his sire Patriarch with added frame and substance

**AI  
Sire**



**BEN NEVIS VENTURE 477**

REG NO.: USA20827851

Genetic Conditions: AMF,CAF,DDF,NHF,DWF,MAF,MHF,OHF,OSF,RGF

H P C A INTENSITY  
RENNYLEA L519<sup>PV</sup>  
RENNYLEA H414<sup>SV</sup>

ASCOT HALLMARK H147<sup>PV</sup>  
BEN NEVIS MONARCH M128<sup>SV</sup>  
BEN NEVIS DORMIST G76<sup>SV</sup>

**Sire: SMP21S741 PATHFINDER S741<sup>PV</sup>**

JMB TRACTION 292<sup>PV</sup>  
PATHFINDER TRACTION P301<sup>SV</sup>  
PATHFINDER GENESIS L116<sup>P</sup>

**Dam: BEN NEVIS JEAN S047<sup>SV</sup>**

H P C A PROCEED<sup>PV</sup>  
BEN NEVIS JEAN P59<sup>PV</sup>  
NEVIS JEAN H215<sup>SV</sup>

**MID JUNE 2026 TRANSTASMAN ANGUS CATTLE EVALUATION**

TACE	CEDir	CEDtrs	GL	BW	200	400	600	MCW	MBC	MCH	Milk	SS	DC
<b>EBV</b>	<b>+6.9</b>	<b>+7.8</b>	<b>-10.2</b>	<b>+2.3</b>	<b>+43</b>	<b>+83</b>	<b>+121</b>	<b>+81</b>	<b>+0.34</b>	<b>+71</b>	<b>+31</b>	<b>+3.0</b>	<b>-5.3</b>
Acc	66%	58%	82%	82%	83%	81%	81%	79%	70%	79%	75%	45%	78%
Perc	16	9	2	20	88	82	51	80	36	70	1	23	42

TACE	CWT	EMA	Rib	P8	RBY	IMF	NFI-F	Doc	Claw	Angle	Leg	INDEXES	
<b>EBV</b>	<b>+67</b>	<b>+6.1</b>	<b>+4.0</b>	<b>+3.2</b>	<b>-0.4</b>	<b>+2.9</b>	<b>+0.88</b>	<b>+33</b>	<b>+0.92</b>	<b>+1.10</b>	<b>+0.98</b>	<b>\$A</b>	<b>\$A-L</b>
Acc	77%	76%	73%	71%	65%	78%	60%	76%	88%	87%	64%	<b>\$207</b>	<b>\$351</b>
Perc	56	58	2	8	86	41	96	11	67	79	36	58	61

Traits Observed: BWT, 200WT, 400WT, Scan (EMA, Rib, Rump, IMF), DOC, Genomics



**BEN NEVIS JEAN S047**

REG NO.: NBN21S047

### 3RLS POWERPOINT S020<sup>PV</sup>

Id: KNA21S020

DOB: 06/08/2021

Mating: ET

HBR

**Genetic Conditions:** AMFU,CAFU,DDFU,NHFU

D R SIERRA CUT 7404<sup>#</sup>

TEHAMA REVERE<sup>#</sup>

TEHAMA ELITE BLACKBIRD T003<sup>#</sup>

**Sire: USA18159093 S POWERPOINT WS 5503<sup>PV</sup>**

S SUMMIT 956<sup>#</sup>

S QUEEN ESSA 248<sup>#</sup>

S QUEEN ESSA 0131<sup>#</sup>

TUWHARETOA REGENT D145<sup>PV</sup>

MILWILLAH GATSBY G279<sup>PV</sup>

MILWILLAH LOWAN D112<sup>SV</sup>

**Dam: NBHK328 CLUNIE RANGE MAYFLOWER K328<sup>SV</sup>**

WK REPLAY<sup>#</sup>

CLUNIE RANGE MAYFLOWER G338<sup>PV</sup>

CLUNIE RANGE MAYFLOWER D124<sup>SV</sup>



#### MID JUNE 2026 TRANSTASMAN ANGUS CATTLE EVALUATION

TACE	CEDir	CEDtrs	GL	BW	200	400	600	MCW	MBC	MCH	Milk	SS	DC
EBV	+6.8	+9.1	-4.2	+0.2	+47	+94	+120	+92	+0.15	+7.1	+22	+0.5	-5.9
Acc	71%	63%	83%	88%	87%	85%	86%	83%	69%	80%	78%	81%	49%
Perc	16	3	57	3	75	51	54	67	87	71	22	95	30
TACE	CWT	EMA	Rib	P8	RBV	IMF	NFI-F	Doc	Claw	Angle	Leg	INDEXES	
EBV	+81	+7.2	+3.0	+2.3	-0.7	+4.6	+0.49	-5	+1.12	+0.88	+1.00	\$A	\$A-L
Acc	76%	72%	73%	73%	66%	76%	65%	78%	72%	72%	68%	\$237	\$398
Perc	20	45	6	14	93	12	76	99	93	28	42	25	23

Traits Observed: 200WT,400WT,SC,Scan(EMA,Rib,Rump,IMF),Genomics

Statistics: Number of Herds: 1, Prog Analysed: 33, Genomic Prog: 25

### ALPINE 38 SPECIAL S021<sup>PV</sup>

Id: CGK21S021

DOB: 12/02/2021

Mating: AI

HBR

**Genetic Conditions:** AMF,CAF,DDF,NHF,DWF,MAF,MHF,OHF,OSF,RGF

EF COMPLEMENT 8088<sup>PV</sup>

EF COMMANDO 1366<sup>PV</sup>

RIVERBEND YOUNG LUCY W1470<sup>#</sup>

**Sire: USA18229487 BALDRIDGE 38 SPECIAL<sup>PV</sup>**

STYLES UPGRADE J59<sup>#</sup>

BALDRIDGE ISABEL Y69<sup>#</sup>

BALDRIDGE ISABEL T935<sup>#</sup>

K C F BENNETT PERFORMER<sup>#</sup>

COONAMBLE HECTOR H249<sup>SV</sup>

COONAMBLE E9<sup>PV</sup>

**Dam: CGKM003 ALPINE LOWAN M003<sup>SV</sup>**

LAWSONS DINKY-DI Z191<sup>SV</sup>

ALPINE EVIKA E279<sup>#</sup>

ALPINE LOWAN Z59<sup>#</sup>



#### MID JUNE 2026 TRANSTASMAN ANGUS CATTLE EVALUATION

TACE	CEDir	CEDtrs	GL	BW	200	400	600	MCW	MBC	MCH	Milk	SS	DC
EBV	+4.0	+9.1	-8.5	+2.8	+52	+97	+132	+92	+0.31	+8.2	+21	+3.6	-6.8
Acc	80%	68%	98%	98%	97%	97%	96%	88%	74%	83%	81%	94%	57%
Perc	41	3	7	28	52	42	28	66	47	50	26	11	16
TACE	CWT	EMA	Rib	P8	RBV	IMF	NFI-F	Doc	Claw	Angle	Leg	INDEXES	
EBV	+63	+7.6	+3.0	+1.4	-0.6	+4.1	+0.15	+23	+0.48	+0.56	+0.82	\$A	\$A-L
Acc	83%	84%	83%	83%	78%	84%	71%	96%	86%	86%	80%	\$250	\$412
Perc	67	40	6	24	91	18	40	40	3	1	6	15	15

Traits Observed: GL,BWT,200WT,400WT,600WT,SC,Scan(EMA,Rib,Rump,IMF),DOC,Structure(Claw Set x 1, Foot Angle x 1, Leg Angle x 1),Genomics

Statistics: Number of Herds: 44, Prog Analysed: 651, Genomic Prog: 472

# CONNELY CRAFTSMAN<sup>PV</sup>

**Id:** USA20132505    **DOB:** 13/11/2020    **Mating:** Natural    **HBR**

**Genetic Conditions:** AMF,CAF,DDF,NHF,DWF,MAF,MHF,OHF,OSF,RGF

MOHNEN SUBSTANTIAL 272<sup>#</sup>  
SITZ STELLAR 726D<sup>PV</sup>  
SITZ PRIDE 200B<sup>#</sup>

**Sire:** USA19057457 **SITZ RESILIENT 10208<sup>PV</sup>**

SITZ TOP GAME 561X<sup>#</sup>  
SITZ MISS BURGESS 1856<sup>#</sup>  
SITZ MISS BURGESS 4381<sup>#</sup>  
CONNELY CONFIDENCE PLUS<sup>#</sup>  
CONNELY NIOBRARA 5451<sup>#</sup>  
BRITHA OF CONANGA 167<sup>#</sup>

**Dam:** USA19323852 **BLACK CATHY OF CONANGA 8521<sup>#</sup>**

CONNELY BLACK GRANITE<sup>#</sup>  
BLACK CARLA OF CONANGA 450<sup>#</sup>  
BLACK CATTY OF CONANGA 170<sup>#</sup>



## MID JUNE 2026 TRANSTASMAN ANGUS CATTLE EVALUATION

TACE	CEDir	CEDtrs	GL	BW	200	400	600	MCW	MBC	MCH	Milk	SS	DC
EBV	-0.1	+7.4	-5.5	+3.9	+63	+109	+124	+74	+0.16	+4.2	+25	+0.5	-8.5
Acc	83%	63%	99%	99%	98%	97%	97%	89%	68%	80%	83%	96%	49%
Perc	75	12	36	52	10	14	45	87	86	97	8	95	4
TACE	CWT	EMA	Rib	P8	RBY	IMF	NFI-F	Doc	Claw	Angle	Leg	INDEXES	
EBV	+79	+9.9	-0.3	+0.6	+0.2	+2.7	+0.49	+24	+0.64	+0.78	+0.82	\$A	\$A-L
Acc	85%	87%	85%	83%	78%	86%	69%	98%	99%	99%	84%	\$304	\$451
Perc	24	19	57	36	58	45	76	39	14	11	6	1	3

Traits Observed: Structure(Claw Set x 1, Foot Angle x 1),Genomics

Statistics: Number of Herds: 107, Prog Analysed: 1911, Genomic Prog: 1292

# EXAR STOCK FUND 9097B<sup>PV</sup>

**Id:** USA19411210    **DOB:** 25/01/2019    **Mating:** Natural    **HBR**

**Genetic Conditions:** AMF,CAF,DDF,NHF,DWF,MAF,MHF,OHF,OSF,RGF

BASIN PAYWEIGHT 006S<sup>#</sup>  
BASIN PAYWEIGHT 1682<sup>PV</sup>  
21AR O LASS 7017<sup>#</sup>

**Sire:** USA18827828 **DEER VALLEY GROWTH FUND<sup>#</sup>**

PLATTEMERE WEIGH UP K360<sup>#</sup>  
DEER VALLEY RITA 36113<sup>#</sup>  
DEER VALLEY RITA 9457<sup>#</sup>  
G A R PROPHET<sup>SV</sup>  
G A R PROPHET K243<sup>#</sup>

**Dam:** USA18225042 **EXAR EMPRESS 0875<sup>#</sup>**

EXAR UPSHOT 0562B<sup>#</sup>  
EXAR EMPRESS 2622<sup>#</sup>  
PF 0T26 EMPRESS 8113<sup>#</sup>



## MID JUNE 2026 TRANSTASMAN ANGUS CATTLE EVALUATION

TACE	CEDir	CEDtrs	GL	BW	200	400	600	MCW	MBC	MCH	Milk	SS	DC
EBV	+0.2	+3.7	-3.8	+2.9	+67	+114	+148	+140	+0.24	+5.4	+13	+0.8	-3.1
Acc	79%	64%	96%	96%	95%	95%	94%	93%	79%	90%	90%	93%	52%
Perc	73	49	63	30	5	8	8	8	68	92	82	91	87
TACE	CWT	EMA	Rib	P8	RBY	IMF	NFI-F	Doc	Claw	Angle	Leg	INDEXES	
EBV	+89	+9.7	-2.1	-3.4	+0.6	+0.8	-0.41	+43	+1.04	+0.90	+1.04	\$A	\$A-L
Acc	87%	86%	85%	84%	79%	86%	67%	79%	90%	89%	70%	\$207	\$377
Perc	8	21	89	91	34	87	4	2	86	33	55	58	39

Traits Observed: Genomics

Statistics: Number of Herds: 8, Prog Analysed: 114, Genomic Prog: 82

# HART NETWORK<sup>PV</sup>

Id: USA20488998

DOB: 11/02/2022

Mating: Natural

HBR

**Genetic Conditions:** AMF,CAF,DDF,NHF,DWF,MAF,MHF,OHF,OSF,RGF

K C F BENNETT HOMESTEAD<sup>#</sup>  
CHERRY CREEK LAND GRANT<sup>#</sup>

**Sire:** USA19555171 **CONNEALY CLARITY<sup>PV</sup>**

CONNEALY CONFIDENCE PLUS<sup>#</sup>  
BRESHIE OF CONANGA 6988<sup>#</sup>  
BRELLY OF CONANGA 367<sup>#</sup>

MOGCK BULLSEYE<sup>PV</sup>  
HOOVER NO DOUBT<sup>PV</sup>

**Dam:** USA19592754 **HART WHITNEY 9518<sup>#</sup>**

CONNEALY CAVALRY 1149<sup>#</sup>  
HART WHITNEY 3206<sup>#</sup>  
HART WHITNEY 0244<sup>#</sup>



## MID JUNE 2026 TRANSTASMAN ANGUS CATTLE EVALUATION

TACE	CEDir	CEDtrs	GL	BW	200	400	600	MCW	MBC	MCH	Milk	SS	DC
<b>EBV</b>	<b>+3.8</b>	<b>+3.3</b>	<b>-2.2</b>	<b>+4.7</b>	<b>+76</b>	<b>+127</b>	<b>+149</b>	<b>+115</b>	<b>+0.44</b>	<b>+4.7</b>	<b>+13</b>	<b>+2.5</b>	<b>-5.6</b>
Acc	83%	58%	99%	99%	98%	97%	96%	89%	66%	77%	81%	95%	46%
Perc	43	54	84	69	1	1	7	31	16	96	84	38	36
TACE	CWT	EMA	Rib	P8	RBV	IMF	NFI-F	Doc	Claw	Angle	Leg	INDEXES	
<b>EBV</b>	<b>+89</b>	<b>+12.8</b>	<b>+1.0</b>	<b>+0.4</b>	<b>-0.1</b>	<b>+3.7</b>	<b>-0.06</b>	<b>+6</b>	<b>+0.64</b>	<b>+0.74</b>	<b>+0.76</b>	<b>\$A</b>	<b>\$A-L</b>
Acc	84%	86%	84%	82%	77%	85%	65%	99%	90%	90%	82%	<b>\$309</b>	<b>\$491</b>
Perc	8	5	28	39	74	24	20	94	14	7	3	1	1

Traits Observed: Genomics

Statistics: Number of Herds: 97, Prog Analysed: 2486, Genomic Prog: 1617

# MYERS FAIR-N-SQUARE M39<sup>PV</sup>

Id: USA19418329

DOB: 07/01/2019

Mating: Natural

HBR

**Genetic Conditions:** AMF,CAF,DDF,NHF,DWF,MAF,MHF,OHF,OSF,RGF

CONNEALY CONFIDENCE 0100<sup>#</sup>  
CONNEALY CONFIDENCE PLUS<sup>#</sup>

**Sire:** USA18876777 **WOODHILL BLUEPRINT<sup>PV</sup>**

ELBANNA OF CONANGA 1209<sup>#</sup>  
TEHAMA SIERRA CUT Z118<sup>#</sup>  
WOODHILL EVERGREEN Z291-B233<sup>#</sup>  
WOODHILL EVERGREEN U6-Z291<sup>#</sup>

BALDRIDGE KABOOM K243 KCF<sup>#</sup>  
CONNEALY THUNDER<sup>#</sup>

**Dam:** USA18540617 **MYERS MISS BEAUTY M136<sup>#</sup>**

PARKA OF CONANGA 241<sup>#</sup>  
CONNEALY ONWARD<sup>#</sup>  
MYERS MISS BEAUTY M476<sup>#</sup>  
MYERS MISS BEAUTY M384<sup>#</sup>



## MID JUNE 2026 TRANSTASMAN ANGUS CATTLE EVALUATION

TACE	CEDir	CEDtrs	GL	BW	200	400	600	MCW	MBC	MCH	Milk	SS	DC
<b>EBV</b>	<b>+1.4</b>	<b>-5.4</b>	<b>-9.7</b>	<b>+4.7</b>	<b>+69</b>	<b>+126</b>	<b>+154</b>	<b>+121</b>	<b>+0.49</b>	<b>+10.4</b>	<b>+22</b>	<b>+1.6</b>	<b>-6.8</b>
Acc	86%	71%	99%	98%	98%	98%	98%	94%	67%	77%	92%	97%	54%
Perc	65	97	3	69	3	2	4	23	9	15	22	71	16
TACE	CWT	EMA	Rib	P8	RBV	IMF	NFI-F	Doc	Claw	Angle	Leg	INDEXES	
<b>EBV</b>	<b>+81</b>	<b>+7.7</b>	<b>+0.8</b>	<b>+1.3</b>	<b>-0.6</b>	<b>+1.8</b>	<b>+0.07</b>	<b>+21</b>	<b>+0.90</b>	<b>+0.80</b>	<b>+0.80</b>	<b>\$A</b>	<b>\$A-L</b>
Acc	90%	89%	88%	87%	82%	89%	69%	96%	99%	99%	85%	<b>\$262</b>	<b>\$433</b>
Perc	18	39	32	26	91	68	32	47	63	14	5	8	7

Traits Observed: Genomics

Statistics: Number of Herds: 107, Prog Analysed: 1073, Genomic Prog: 723

# SCHIEFELBEIN ATTRACTIVE 4565<sup>PV</sup>

**Id:** USA18272797    **DOB:** 20/03/2015    **Mating:** Natural    **HBR**

**Genetic Conditions:** AMF,CAF,DDF,NHF

GDAR GAME DAY 449#  
SITZ TOP GAME 561X#

**Sire:** USA17262374 **JMB TRACTION 292<sup>PV</sup>**  
S A V 004 PREDOMINANT 4438#  
JMB EMULOTA 013#

BAR S EMULOTA 5426#  
SITZ TRAVELER 8180#  
S A V FINAL ANSWER 0035#

**Dam:** USA16491382 **FROSTY ANSWER 3979#**  
C A FUTURE DIRECTION 5321<sup>SV</sup>  
FROSTY ELBA LIZZY 1106#  
FROSTY FOCUS 953#



## MID JUNE 2026 TRANSTASMAN ANGUS CATTLE EVALUATION

TACE	CEDir	CEDtrs	GL	BW	200	400	600	MCW	MBC	MCH	Milk	SS	DC
<b>EBV</b>	<b>-1.5</b>	<b>-0.7</b>	<b>-2.7</b>	<b>+5.1</b>	<b>+69</b>	<b>+115</b>	<b>+150</b>	<b>+108</b>	<b>+0.27</b>	<b>+7.7</b>	<b>+20</b>	<b>+2.3</b>	<b>-3.0</b>
Acc	81%	69%	95%	95%	93%	93%	93%	90%	71%	83%	90%	92%	56%
Perc	83	85	78	77	3	7	7	42	59	60	31	45	88
TACE	CWT	EMA	Rib	P8	RBV	IMF	NFI-F	Doc	Claw	Angle	Leg	INDEXES	
<b>EBV</b>	<b>+91</b>	<b>+5.8</b>	<b>-3.2</b>	<b>-3.7</b>	<b>+0.2</b>	<b>+1.0</b>	<b>+0.58</b>	<b>+23</b>	<b>+0.96</b>	<b>+0.86</b>	<b>+0.76</b>	<b>\$A</b>	<b>\$A-L</b>
Acc	87%	84%	84%	83%	78%	85%	70%	81%	93%	93%	67%	<b>\$213</b>	<b>\$352</b>
Perc	6	62	97	93	58	84	83	40	74	24	3	51	60

Traits Observed: Genomics

Statistics: Number of Herds: 12, Prog Analysed: 58, Genomic Prog: 24

# SQUARE B TRUE NORTH 8052<sup>PV</sup>

**Id:** USA19405246    **DOB:** 16/08/2018    **Mating:** Natural    **HBR**

**Genetic Conditions:** AMF,CAF,DDF,NHF,DWF,MAF,MHF,OHF,OSF,RGF

O C C PAXTON 730P#  
COLEMAN CHARLO 0256<sup>PV</sup>

**Sire:** USA18578963 **S A V RAINFALL 6846<sup>PV</sup>**  
S A V 8180 TRAVELER 004#  
S A V BLACKCAP MAY 4136#  
S A V MAY 2397#

KMK ALLIANCE 6595 187#  
CONNEALY CONSENSUS#

**Dam:** USA17029025 **ELBANNA OF CONANGA 1209#**  
BLINDA OF CONANGA 004#  
CONNEALY FORWARD#  
ELBASTA OF CONANGA 9703#  
ELBA OF CONANGA 3761#



## MID JUNE 2026 TRANSTASMAN ANGUS CATTLE EVALUATION

TACE	CEDir	CEDtrs	GL	BW	200	400	600	MCW	MBC	MCH	Milk	SS	DC
<b>EBV</b>	<b>+6.4</b>	<b>+6.4</b>	<b>-8.4</b>	<b>+0.9</b>	<b>+55</b>	<b>+103</b>	<b>+126</b>	<b>+78</b>	<b>+0.08</b>	<b>+4.1</b>	<b>+27</b>	<b>+1.9</b>	<b>-3.8</b>
Acc	85%	70%	98%	98%	97%	97%	97%	92%	68%	79%	89%	95%	54%
Perc	19	20	7	6	35	25	39	84	95	98	5	60	76
TACE	CWT	EMA	Rib	P8	RBV	IMF	NFI-F	Doc	Claw	Angle	Leg	INDEXES	
<b>EBV</b>	<b>+73</b>	<b>+9.9</b>	<b>+2.8</b>	<b>+2.6</b>	<b>-0.4</b>	<b>+2.9</b>	<b>+0.40</b>	<b>+29</b>	<b>+0.78</b>	<b>+0.90</b>	<b>+0.98</b>	<b>\$A</b>	<b>\$A-L</b>
Acc	88%	88%	87%	85%	81%	88%	70%	93%	88%	88%	84%	<b>\$244</b>	<b>\$390</b>
Perc	38	19	7	12	86	41	68	20	38	33	36	19	30

Traits Observed: Genomics

Statistics: Number of Herds: 90, Prog Analysed: 999, Genomic Prog: 461

# TEHAMA TESTAMENT<sup>SV</sup>

**Id:** USA20019500    **DOB:** 12/08/2020    **Mating:** Natural    **HBR**

**Genetic Conditions:** AMF,CAF,DDF,NHF,DWF,MAF,MHF,OHF,OSF,RGF

HOOVER DAM#  
 S S NIAGARA Z29<sup>SV</sup>  
 JET S S X144#  
**Sire: USA18981191 TEHAMA PATRIARCH F028<sup>PV</sup>**  
 CONNEALY THUNDER#  
 TEHAMA ELITE BLACKBIRD D826#  
 TEHAMA ELITE BLACKBIRD Z630#  
 CONNEALY ONWARD#  
 SITZ WISDOM 481T#  
 SITZ ELLUNA ELITE 94P#  
**Dam: USA18806472 TEHAMA MARY BLACKBIRD E789#**  
 S A V FINAL ANSWER 0035#  
 TEHAMA MARY BLACKBIRD Y677#  
 TEHAMA MARY BLACKBIRD T073#



MID JUNE 2026 TRANSTASMAN ANGUS CATTLE EVALUATION													
TACE	CEDir	CEDtrs	GL	BW	200	400	600	MCW	MBC	MCH	Milk	SS	DC
EBV	+8.5	+3.7	-4.5	+2.3	+56	+99	+119	+84	+0.20	+7.0	+16	+5.1	-5.5
Acc	86%	67%	98%	98%	98%	98%	97%	93%	77%	92%	89%	97%	51%
Perc	6	49	52	20	32	38	56	77	78	72	61	1	38
TACE	CWT	EMA	Rib	P8	RBY	IMF	NFI-F	Doc	Claw	Angle	Leg	INDEXES	
EBV	+63	+7.9	+0.9	+1.4	-0.3	+2.5	+0.85	+26	+0.72	+0.82	+0.88	\$A	\$A-L
Acc	88%	88%	86%	85%	80%	87%	67%	97%	98%	98%	93%	\$233	\$386
Perc	67	37	30	24	83	50	95	31	26	17	13	29	33

Traits Observed: Genomics

Statistics: Number of Herds: 63, Prog Analysed: 917, Genomic Prog: 704

# XLBEEF FIREBALL S14<sup>PV</sup>

**Id:** NVN21S14    **DOB:** 21/07/2021    **Mating:** AI    **HBR**

**Genetic Conditions:** AMFU,CAFU,DDFU,NHFU

G A R SURE FIRE<sup>SV</sup>  
 G A R SURE FIRE 6404#  
 G A R COMPLETE N281#  
**Sire: USA18690054 GB FIREBALL 672<sup>PV</sup>**  
 G A R ANTICIPATION#  
 GB ANTICIPATION 432#  
 GB AMBUSH 269#  
 EF COMMANDO 1366<sup>PV</sup>  
 BALDRIDGE BRONC<sup>SV</sup>  
 BALDRIDGE ISABEL Y69#  
**Dam: NVNP112 XLBEEF PRINCESS P112<sup>PV</sup>**  
 THE GRANGE WHEEL WRIGHT D6<sup>PV</sup>  
 CARABAR DIANA J128<sup>SV</sup>  
 CARABAR DIANA D110<sup>SV</sup>



MID JUNE 2026 TRANSTASMAN ANGUS CATTLE EVALUATION													
TACE	CEDir	CEDtrs	GL	BW	200	400	600	MCW	MBC	MCH	Milk	SS	DC
EBV	+0.2	+6.9	-5.7	+4.7	+62	+103	+125	+117	+0.39	+5.6	+16	+3.3	-7.8
Acc	74%	66%	84%	84%	85%	84%	84%	82%	76%	84%	79%	81%	53%
Perc	73	15	33	69	13	25	42	28	26	89	64	16	7
TACE	CWT	EMA	Rib	P8	RBY	IMF	NFI-F	Doc	Claw	Angle	Leg	INDEXES	
EBV	+63	+10.6	-0.4	-2.3	+0.0	+4.7	+0.46	+5	+1.14	+0.86	+0.90	\$A	\$A-L
Acc	76%	75%	74%	75%	67%	78%	69%	80%	70%	70%	67%	\$261	\$435
Perc	68	14	60	81	69	11	73	96	94	24	16	8	7

Traits Observed: GL,BWT,200WT,Genomics

Statistics: Number of Herds: 2, Prog Analysed: 7, Genomic Prog: 6

# XLBEEF GUNSMOKE P8<sup>PV</sup>

Id: NVNP8

DOB: 02/03/2018

Mating: AI

HBR

**Genetic Conditions:** AMF,CAF,DDF,NHF,DWF,MAF,MHF,OHF,OSF,RGF

TE MANIA BERKLEY B1<sup>PV</sup>  
 CARABAR GUN SMOKE G53<sup>SV</sup>  
 CARABAR HEATHER Z24<sup>PV</sup>  
**Sire: NVNL23 XLBEEF GUNSMOKE L23<sup>PV</sup>**  
 THE GRANGE WHEEL WRIGHT D6<sup>PV</sup>  
 CARABAR DIANA J128<sup>SV</sup>  
 CARABAR DIANA D110<sup>SV</sup>

C R A BEXTOR 872 5205 608<sup>#</sup>  
 TC ABERDEEN 759<sup>SV</sup>  
 TC BLACKBIRD 4034<sup>#</sup>

**Dam: AHWJ9 ABERDEEN ESTATE PRINCESS J9<sup>PV</sup>**

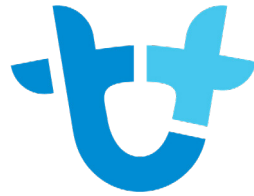
B/R NEW DIMENSION 7127<sup>SV</sup>  
 ARDROSSAN PRINCESS W38<sup>PV</sup>  
 ARDROSSAN PRINCESS U24<sup>#</sup>



MID JUNE 2026 TRANSTASMAN ANGUS CATTLE EVALUATION													
TACE	CEDir	CEDtrs	GL	BW	200	400	600	MCW	MBC	MCH	Milk	SS	DC
EBV	-2.4	+1.0	-5.1	+5.3	+48	+83	+106	+80	+0.14	+8.8	+16	+0.1	-5.1
Acc	74%	63%	87%	92%	90%	87%	89%	85%	69%	80%	84%	80%	47%
Perc	86	75	42	80	71	81	80	81	88	38	64	98	47
TACE	CWT	EMA	Rib	P8	RBY	IMF	NFI-F	Doc	Claw	Angle	Leg	INDEXES	
EBV	+72	+5.0	+0.1	+0.4	+0.2	+2.1	+0.50	+1	+1.06	+0.78	+0.94	\$A	\$A-L
Acc	79%	71%	72%	73%	63%	76%	65%	78%	63%	63%	59%	\$192	\$306
Perc	40	71	48	39	58	60	77	99	88	11	25	73	86

Traits Observed: BWT,Genomics

Statistics: Number of Herds: 3, Prog Analysed: 54, Genomic Prog: 41



# AuctionsPlus

## How to Register and Bid on AuctionsPlus

1

Go to [www.auctionsplus.com.au](http://www.auctionsplus.com.au) to register at least 48 hours before the sale.

2

Select **“Sign Up”** in the top right hand corner.

3

Fill out your name, mobile number, email address and create a password.

4

Go to your emails and confirm the account.

5

Return to AuctionsPlus and log in.

6

Select **“Dashboard”** and then select **“Request Approval to Buy”**.

7

Fill in buyer details and once completed go back to Dashboard.

8

Complete buyer induction module (approx. 30 minutes).

9

AuctionsPlus will email you to let you know that your account has been approved.

10

Log in on sale day and connect to auction.

11

Bid using the two-step process – unlock the bid button and bid at that price.

12

If you are successful, the selling agent will contact you post sale to organise delivery and payment.

For more information please contact us on:

Phone: (02) 9262 4222

Email: [info@auctionsplus.com.au](mailto:info@auctionsplus.com.au)

**LOT 1**

**Bulls 15 to 18 months**



**XLBEEF H/NETWORK W18<sup>SV</sup>**

**Id:** NVN25W18      **DOB:** 31/01/2025      **Mating:** AI      **HBR**

*Genetic Conditions: AMFU,CAFU,DDFU,NHFU*

**Sire:** USA20488998 **HART NETWORK<sup>PV</sup>**  
 CHERRY CREEK LAND GRANT#  
 CONNEALY CLARITY<sup>PV</sup>  
 BRESHIE OF CONANGA 6988#  
 HOOVER NO DOUBT<sup>PV</sup>  
 HART WHITNEY 9518#  
 HART WHITNEY 3206#  
 C R A BEXTOR 872 5205 608#  
 G A R PROPHET<sup>SV</sup>  
 G A R OBJECTIVE 1885#

**Dam:** NVNP46 **XLBEEF GLAZE P46<sup>#</sup>**  
 BRAVEHEART OF STERN<sup>SV</sup>  
 XLBEEF MISS BRAVEHEART M46#  
 ANGURU GLAZE G44#



LOT 26 -NVN25W37 NETWORK SON



LOT 27 - NVN24V75 NETWORK DAUGHTER

**MID JUNE 2026 TRANSTASMAN ANGUS CATTLE EVALUATION**

TACE	CEDir	CEDtrs	GL	BW	200	400	600	MCW	MBC	MCH	Milk	SS	DC
<b>EBV</b>	<b>+6.1</b>	<b>+8.3</b>	<b>-3.8</b>	<b>+2.3</b>	<b>+62</b>	<b>+105</b>	<b>+124</b>	<b>+98</b>	<b>+0.42</b>	<b>+7.5</b>	<b>+20</b>	<b>+2.3</b>	<b>-4.5</b>
Acc	69%	56%	83%	82%	84%	82%	82%	79%	67%	78%	74%	80%	43%
Perc	22	6	63	20	12	22	44	57	20	64	35	45	61
TACE	CWT	EMA	Rib	P8	RBV	IMF	NFI-F	Doc	Claw	Angle	Leg	INDEXES	
<b>EBV</b>	<b>+70</b>	<b>+11.2</b>	<b>+0.9</b>	<b>+1.6</b>	<b>+0.3</b>	<b>+3.0</b>	<b>-0.19</b>	<b>+24</b>	<b>+0.94</b>	<b>+0.90</b>	<b>+0.78</b>	<b>\$A</b>	<b>\$A-L</b>
Acc	71%	71%	70%	71%	62%	75%	62%	78%	70%	70%	66%	<b>\$264</b>	<b>\$429</b>
Perc	49	11	30	22	52	39	12	37	71	33	4	7	8

Traits Observed: GL,BWT,200WT,400WT,Genomics

A big, strong, robust calf to start the sale off and a calf we think has a lot of potential for either stud or commercial use. He has an outstanding high-performance pedigree, combining Phrotet and Network, put together with a great phenotype, a real sire outlook, and a neat data set across the board. W18 is the real deal and definitely worth inspection. Suitable for heifers.

Purchaser:..... \$:.....

Top 15% EBV

www.excelgenetics.com.au

**LOT 2**

**Bulls 15 to 18 months**



**XLBEEF H/NETWORK W12<sup>SV</sup>**

**Id:** NVN25W12      **DOB:** 29/01/2025      **Mating:** ET      **HBR**

*Genetic Conditions: AMFU,CAFU,DDFU,NHFU*

CHERRY CREEK LAND GRANT#  
 CONNEALY CLARITY<sup>PV</sup>  
 BRESHIE OF CONANGA 6988#

**Sire: USA20488998 HART NETWORK<sup>PV</sup>**  
 HOOVER NO DOUBT<sup>PV</sup>  
 HART WHITNEY 9518#  
 HART WHITNEY 3206#

TE MANIA EMPEROR E343<sup>PV</sup>  
 ASCOT HALLMARK H147<sup>PV</sup>  
 MILLAH MURRAH BRENDA F123<sup>PV</sup>

**Dam: NVN21S16 XLBEEF MISS TRACTION S16<sup>SV</sup>**  
 JMB TRACTION 292<sup>PV</sup>  
 XLBEEF TRACTION L90#  
 MURRAY EQUATOR G57<sup>PV</sup>



ET BROTHER sells LOT 4 - NVN25W19 (2)



Grand dam L90

**MID JUNE 2026 TRANSTASMAN ANGUS CATTLE EVALUATION**

TACE	CEDir	CEDtrs	GL	BW	200	400	600	MCW	MBC	MCH	Milk	SS	DC
<b>EBV</b>	<b>+4.4</b>	<b>+6.1</b>	<b>-4.7</b>	<b>+4.2</b>	<b>+58</b>	<b>+104</b>	<b>+130</b>	<b>+94</b>	<b>+0.30</b>	<b>+7.7</b>	<b>+16</b>	<b>+3.6</b>	<b>-6.8</b>
Acc	69%	57%	84%	83%	84%	82%	82%	79%	67%	78%	75%	80%	43%
Perc	37	22	49	59	25	24	32	64	50	59	61	11	16

TACE	CWT	EMA	Rib	P8	RBV	IMF	NFI-F	Doc	Claw	Angle	Leg	INDEXES	
<b>EBV</b>	<b>+75</b>	<b>+8.5</b>	<b>+2.4</b>	<b>+2.9</b>	<b>-0.4</b>	<b>+3.4</b>	<b>+0.27</b>	<b>+9</b>	<b>+0.66</b>	<b>+0.72</b>	<b>+0.90</b>	<b>\$A</b>	<b>\$A-L</b>
Acc	72%	72%	71%	72%	62%	76%	63%	79%	69%	69%	65%	<b>\$269</b>	<b>\$435</b>
Perc	33	31	10	10	86	30	54	90	17	6	16	6	7

Traits Observed: BWT,200WT,400WT,Genomics

W12 is the first of ET brothers to be offered in this year's draft and no doubt one of the most exciting calves we have on offer. All three sisters have been retained in the herd and we are extremely excited about what they are going to bring to our operation. Apart from being very easy on the eye, W12 comes with an outstanding data set, with Growth, Carcase, Structure and Indexes all ranking him very high. This is definitely a nice package.

Purchaser:..... \$:.....

**LOT 3**

**Bulls 15 to 18 months**



**XLBEEF H/NETWORK W8<sup>SV</sup>**

**Id:** NVN25W8      **DOB:** 25/01/2025      **Mating:** AI      **HBR**

*Genetic Conditions: AMFU,CAFU,DDFU,NHFU*

CHERRY CREEK LAND GRANT#  
 CONNEALY CLARITY<sup>PV</sup>  
 BRESHIE OF CONANGA 6988#

**Sire: USA20488998 HART NETWORK<sup>PV</sup>**

HOOVER NO DOUBT<sup>PV</sup>  
 HART WHITNEY 9518#  
 HART WHITNEY 3206#  
 SILVEIRAS CONVERSION 8064#  
 BUBS SOUTHERN CHARM AA31<sup>PV</sup>  
 HICKORY HILL ERICA 009#

**Dam: NVN22T74 XLBEEF JANE T74<sup>SV</sup>**

DEER VALLEY ALL IN<sup>SV</sup>  
 XLBEEF JANE L22#  
 XLBEEF JANE J34#



BUBS Southern Charn -Dams Sire



NETWORK Son sells LOT 1  
 -NVN25W18

**MID JUNE 2026 TRANSTASMAN ANGUS CATTLE EVALUATION**

TACE	CEDir	CEDtrs	GL	BW	200	400	600	MCW	MBC	MCH	Milk	SS	DC
<b>EBV</b>	-1.3	+2.1	-3.9	+5.2	<b>+76</b>	<b>+122</b>	<b>+153</b>	<b>+146</b>	<b>+0.36</b>	<b>+8.9</b>	<b>+8</b>	<b>+3.3</b>	<b>-4.0</b>
Acc	69%	57%	83%	83%	84%	82%	82%	79%	64%	74%	75%	80%	42%
Perc	82	66	62	78	1	3	5	6	33	36	98	16	72
TACE	CWT	EMA	Rib	P8	RBV	IMF	NFI-F	Doc	Claw	Angle	Leg	INDEXES	
<b>EBV</b>	<b>+79</b>	<b>+15.0</b>	-0.1	+0.0	+0.3	+2.7	+0.09	+17	<b>+0.76</b>	<b>+0.96</b>	<b>+1.08</b>	<b>\$A</b>	<b>\$A-L</b>
Acc	71%	71%	70%	71%	62%	75%	62%	79%	68%	68%	61%	<b>\$261</b>	<b>\$445</b>
Perc	23	2	53	46	52	45	34	64	34	48	67	8	4

Traits Observed: GL,BWT,200WT,400WT,Genomics

A really nice unit here. Thick set, soft, easy doing calf with plenty of depth and volume, with some real eye appeal. W8 has been one of those, look at me, calves from the start and has only got better with age, and this performance is definitely backed in his data. His 200, 400 & 600 day Growth EBVs rank him in the top 3% of the breed. Pair that with an EMA in the top 2%, W8 is sure going to pack a performance punch into any breeding program.

Purchaser:..... \$:.....

Top 15% EBV

**LOT 4**

**Bulls 15 to 18 months**



**XLBEEF H/NETWORK W19<sup>SV</sup>**

**Id:** NVN25W19      **DOB:** 01/02/2025      **Mating:** ET      **HBR**

*Genetic Conditions: AMFU,CAFU,DDFU,NHFU*

CHERRY CREEK LAND GRANT#  
 CONNEALY CLARITY<sup>PV</sup>  
 BRESHIE OF CONANGA 6988#

**Sire: USA20488998 HART NETWORK<sup>PV</sup>**

HOOVER NO DOUBT<sup>PV</sup>  
 HART WHITNEY 9518#  
 HART WHITNEY 3206#  
 TE MANIA EMPEROR E343<sup>PV</sup>  
 ASCOT HALLMARK H147<sup>PV</sup>

**Dam: NVN21S16 XLBEEF MISS TRACTION S16<sup>SV</sup>**

MILLAH MURRAH BRENDA F123<sup>PV</sup>  
 JMB TRACTION 292<sup>PV</sup>  
 XLBEEF TRACTION L90#  
 MURRAY EQUATOR G57<sup>PV</sup>



ET BROTHER LOT 2 - NVN25W12



Grand dam L90

**MID JUNE 2026 TRANSTASMAN ANGUS CATTLE EVALUATION**

TACE	CEDir	CEDtrs	GL	BW	200	400	600	MCW	MBC	MCH	Milk	SS	DC
<b>EBV</b>	<b>+3.6</b>	<b>+3.2</b>	<b>-6.3</b>	<b>+4.5</b>	<b>+67</b>	<b>+115</b>	<b>+143</b>	<b>+123</b>	<b>+0.46</b>	<b>+7.6</b>	<b>+15</b>	<b>+2.8</b>	<b>-7.7</b>
Acc	69%	56%	83%	82%	84%	82%	82%	79%	68%	78%	75%	80%	42%
Perc	45	55	25	65	4	7	12	21	13	62	73	28	8

TACE	CWT	EMA	Rib	P8	RBV	IMF	NFI-F	Doc	Claw	Angle	Leg	INDEXES	
<b>EBV</b>	<b>+83</b>	<b>+10.5</b>	<b>-0.5</b>	<b>-2.9</b>	<b>+1.1</b>	<b>+1.8</b>	<b>+0.31</b>	<b>+20</b>	<b>+0.56</b>	<b>+0.74</b>	<b>+0.90</b>	<b>\$A</b>	<b>\$A-L</b>
Acc	71%	71%	70%	71%	62%	75%	62%	79%	70%	70%	66%	<b>\$281</b>	<b>\$465</b>
Perc	16	15	62	87	13	68	58	51	7	7	16	3	2

Traits Observed: BWT,200WT,400WT,Genomics

This is no doubt one of the most exciting and all-round complete calves we have offered, and a calf we think has huge potential. We will be retaining semen in W19 for use in our own stud program. He is packed with red meat from top to bottom, with a power of volume and depth, combined with an awesome phenotype and exceptional data across the board. W19 is a real power and performance calf with a lot to like. Two ET brothers sell as Lots 2 & 6.

Purchaser:..... \$:.....

**LOT 5**

**Bulls 15 to 18 months**



**XLBEEF H/NETWORK W21<sup>PV</sup>**

**Id:** NVN25W21      **DOB:** 07/02/2025      **Mating:** ET      **HBR**

*Genetic Conditions: AMFU,CAFU,DDFU,NHFU*

CHERRY CREEK LAND GRANT#  
 CONNEALY CLARITY<sup>PV</sup>  
 BRESHIE OF CONANGA 6988#

**Sire: USA20488998 HART NETWORK<sup>PV</sup>**  
 HOOVER NO DOUBT<sup>PV</sup>  
 HART WHITNEY 9518#  
 HART WHITNEY 3206#  
 EF COMMANDO 1366<sup>PV</sup>  
 BALDRIDGE BRONC<sup>SV</sup>  
 BALDRIDGE ISABEL Y69#

**Dam: NVNP112 XLBEEF PRINCESS P112<sup>PV</sup>**  
 THE GRANGE WHEEL WRIGHT D6<sup>PV</sup>  
 CARABAR DIANA J128<sup>SV</sup>  
 CARABAR DIANA D110<sup>SV</sup>



Carabar Dianna J128 - GRANDAM



XL Beef Fireball S14 - Maternal Brother - Sire to LOTS 12 & 29

**MID JUNE 2026 TRANSTASMAN ANGUS CATTLE EVALUATION**

TACE	CEDir	CEDtrs	GL	BW	200	400	600	MCW	MBC	MCH	Milk	SS	DC
<b>EBV</b>	<b>+2.2</b>	<b>+5.3</b>	<b>+1.6</b>	<b>+5.3</b>	<b>+66</b>	<b>+110</b>	<b>+130</b>	<b>+100</b>	<b>+0.34</b>	<b>+4.0</b>	<b>+20</b>	<b>+2.1</b>	<b>-5.4</b>
Acc	69%	57%	84%	83%	84%	82%	82%	79%	67%	78%	75%	80%	43%
Perc	58	31	99	80	6	12	32	54	39	98	33	53	40
TACE	CWT	EMA	Rib	P8	RBV	IMF	NFI-F	Doc	Claw	Angle	Leg	INDEXES	
<b>EBV</b>	<b>+83</b>	<b>+14.1</b>	<b>+0.3</b>	<b>-0.9</b>	<b>+0.8</b>	<b>+1.9</b>	<b>+0.08</b>	<b>-5</b>	<b>+0.72</b>	<b>+0.80</b>	<b>+1.06</b>	<b>\$A</b>	<b>\$A-L</b>
Acc	72%	71%	71%	72%	62%	75%	63%	79%	69%	69%	64%	<b>\$273</b>	<b>\$431</b>
Perc	15	3	43	61	24	65	33	99	26	14	61	4	8

Traits Observed: BWT,200WT,400WT,Genomics

W21 is a smooth, long-bodied calf with plenty of depth and volume, with a real sire outlook. Out of one of our highest-performing cows in P112, who has had a son retained for stud use, S14, who himself has progeny in this year's sale draft at Lots 12 & 29. There sure is a strong performing female line behind this fella and, put together with Network, it sure creates a neat and exciting pedigree backed again by some impressive data. W21 ticks a few boxes.

Purchaser:..... \$:.....

**LOT 6**

**Bulls 15 to 18 months**



**XLBEEF H/NETWORK W13<sup>SV</sup>**

**Id:** NVN25W13      **DOB:** 30/01/2025      **Mating:** ET      **HBR**

*Genetic Conditions: AMFU,CAFU,DDFU,NHFU*

CHERRY CREEK LAND GRANT#  
 CONNEALY CLARITY<sup>PV</sup>  
 BRESHIE OF CONANGA 6988#

**Sire: USA20488998 HART NETWORK<sup>PV</sup>**

HOOVER NO DOUBT<sup>PV</sup>  
 HART WHITNEY 9518#  
 HART WHITNEY 3206#  
 TE MANIA EMPEROR E343<sup>PV</sup>  
 ASCOT HALLMARK H147<sup>PV</sup>  
 MILLAH MURRAH BRENDA F123<sup>PV</sup>

**Dam: NVN21S16 XLBEEF MISS TRACTION S16<sup>SV</sup>**

JMB TRACTION 292<sup>PV</sup>  
 XLBEEF TRACTION L90#  
 MURRAY EQUATOR G57<sup>PV</sup>



ET BROTHER Sells LOT 2 - NVN25W12



ET BROTHER Sells LOT 4 - NVN25W19 (2)

**MID JUNE 2026 TRANSTASMAN ANGUS CATTLE EVALUATION**

TACE	CEDir	CEDtrs	GL	BW	200	400	600	MCW	MBC	MCH	Milk	SS	DC
<b>EBV</b>	<b>+7.4</b>	<b>+2.4</b>	<b>-4.3</b>	<b>+2.2</b>	<b>+54</b>	<b>+102</b>	<b>+128</b>	<b>+91</b>	<b>+0.27</b>	<b>+6.7</b>	<b>+17</b>	<b>+3.8</b>	<b>-6.4</b>
Acc	69%	57%	84%	83%	84%	82%	82%	79%	67%	78%	75%	80%	43%
Perc	12	63	55	19	43	27	35	67	59	77	57	9	21

TACE	CWT	EMA	Rib	P8	RBV	IMF	NFI-F	Doc	Claw	Angle	Leg	INDEXES	
<b>EBV</b>	<b>+66</b>	<b>+14.4</b>	<b>+2.6</b>	<b>+1.7</b>	<b>+0.7</b>	<b>+4.0</b>	<b>+0.45</b>	<b>+10</b>	<b>+0.66</b>	<b>+0.62</b>	<b>+0.74</b>	<b>\$A</b>	<b>\$A-L</b>
Acc	72%	72%	71%	72%	63%	76%	63%	79%	68%	68%	64%	<b>\$283</b>	<b>\$445</b>
Perc	60	3	8	20	29	20	73	87	17	2	2	2	4

Traits Observed: BWT,200WT,400WT,Genomics

The last of the S16 x Network brothers to sell and another calf packed with performance, W13 is a thick set well balanced calf with a strong pedigree and exceptional data spread from one end to the other including some outstanding Carcase, Structural and Selection Index traits and suitable for heifers. W13 sure brings plenty to the table and would definitely be in a wide range of operations.

Purchaser:..... \$:.....

**LOT 7**

**Bulls 15 to 18 months**



**XLBEEF CRAFTSMAN W1<sup>SV</sup>**

**Id:** NVN25W1      **DOB:** 16/01/2025      **Mating:** ET      **HBR**

*Genetic Conditions: AMFU,CAFU,DDFU,NHFU*

SITZ STELLAR 726D<sup>PV</sup>  
 SITZ RESILIENT 10208<sup>PV</sup>  
 SITZ MISS BURGESS 1856<sup>#</sup>  
**Sire: USA20132505 CONNEALY CRAFTSMAN<sup>PV</sup>**  
 CONNEALY NIOBRARA 5451<sup>#</sup>  
 BLACK CATHY OF CONANGA 8521<sup>#</sup>  
 BLACK CARLA OF CONANGA 450<sup>#</sup>  
 MYTTY IN FOCUS<sup>#</sup>  
 A A R TEN X 7008 S A<sup>SV</sup>  
 A A R LADY KELTON 5551<sup>#</sup>  
**Dam: NVNM66 XLBEEF MISS TEN X M66<sup>PV</sup>**  
 TC ABERDEEN 759<sup>SV</sup>  
 ABERDEEN ESTATE PRINCESS J9<sup>PV</sup>  
 ARDROSSAN PRINCESS W38<sup>PV</sup>



XL beef ICEMAN T103 -  
Maternal Brother



XL Beef Miss Tanker U99 -  
Maternal sister

**MID JUNE 2026 TRANSTASMAN ANGUS CATTLE EVALUATION**

TACE	CEDir	CEDtrs	GL	BW	200	400	600	MCW	MBC	MCH	Milk	SS	DC
<b>EBV</b>	<b>+3.5</b>	<b>+6.6</b>	<b>-8.2</b>	<b>+2.7</b>	<b>+56</b>	<b>+107</b>	<b>+126</b>	<b>+93</b>	<b>+0.05</b>	<b>+5.5</b>	<b>+19</b>	<b>+1.6</b>	<b>-7.6</b>
Acc	69%	58%	83%	83%	84%	82%	83%	79%	67%	78%	75%	80%	44%
Perc	46	18	8	27	33	17	40	65	97	90	41	71	8
TACE	CWT	EMA	Rib	P8	RBV	IMF	NFI-F	Doc	Claw	Angle	Leg	INDEXES	
<b>EBV</b>	<b>+68</b>	<b>+13.9</b>	<b>-2.3</b>	<b>-4.4</b>	<b>+1.2</b>	<b>+3.7</b>	<b>+0.58</b>	<b>+28</b>	<b>+0.96</b>	<b>+1.06</b>	<b>+0.88</b>	<b>\$A</b>	<b>\$A-L</b>
Acc	72%	72%	71%	72%	63%	75%	64%	79%	71%	71%	65%	<b>\$288</b>	<b>\$452</b>
Perc	54	3	91	96	10	24	83	22	74	71	13	2	3

Traits Observed: BWT,200WT,400WT,Genomics

A big strong growthy calf here with still plenty of growing to do. He's long, big boned, well balanced and put together in a great phenotype. Its pedigree is in the purple with Princess W38 breeding multiple AI sires and J9 breeding our very own Super Sire Gunsmoke P8. Its a very strong female side & matched with the performance of Network W1 is a very exciting unit with a lot to offer he also comes with some impressive data across the board and is suitable for heifers.

Purchaser:..... \$:.....

**LOT 8**

**Bulls 23 - 28 months**



**XLBEEF PP3R V64<sup>PV</sup>**

**Id:** NVN24V64      **DOB:** 20/07/2024      **Mating:** Natural      **HBR**

*Genetic Conditions: AMFU,CAFU,DDFU,NHFU*

TEHAMA REVERE<sup>#</sup>  
S POWERPOINT WS 5503<sup>PV</sup>  
S QUEEN ESSA 248<sup>#</sup>

**Sire: KNA21S020 3RLS POWERPOINT S020<sup>PV</sup>**  
MILWILLAH GATSBY G279<sup>PV</sup>  
CLUNIE RANGE MAYFLOWER K328<sup>SV</sup>  
CLUNIE RANGE MAYFLOWER G338<sup>PV</sup>  
XLBEEF GUNSMOKE L23<sup>PV</sup>  
XLBEEF GUNSMOKE P8<sup>PV</sup>

**Dam: NVNR60 XLBEEF JAY R60<sup>SV</sup>**  
ABERDEEN ESTATE PRINCESS J9<sup>PV</sup>  
WAITARA PIO FANDANGO F58<sup>SV</sup>  
XLBEEF JAY J97<sup>#</sup>  
ST PAULS LAURA C32<sup>#</sup>



NVNR60 - DAM



SIRE - 3R POWERPOINT S20

**MID JUNE 2026 TRANSTASMAN ANGUS CATTLE EVALUATION**

TACE	CEDir	CEDtrs	GL	BW	200	400	600	MCW	MBC	MCH	Milk	SS	DC
<b>EBV</b>	<b>-2.8</b>	<b>+3.6</b>	<b>-1.9</b>	<b>+4.8</b>	<b>+49</b>	<b>+92</b>	<b>+121</b>	<b>+110</b>	<b>+0.30</b>	<b>+7.8</b>	<b>+14</b>	<b>+1.1</b>	<b>-5.5</b>
Acc	64%	55%	81%	81%	82%	80%	81%	78%	66%	77%	74%	78%	39%
Perc	88	50	87	71	66	58	52	38	50	57	76	85	38
TACE	CWT	EMA	Rib	P8	RBV	IMF	NFI-F	Doc	Claw	Angle	Leg	INDEXES	
<b>EBV</b>	<b>+81</b>	<b>+8.7</b>	<b>+1.6</b>	<b>+0.7</b>	<b>-0.3</b>	<b>+5.1</b>	<b>+0.67</b>	<b>+5</b>	<b>+0.76</b>	<b>+0.80</b>	<b>+0.90</b>	<b>\$A</b>	<b>\$A-L</b>
Acc	69%	68%	67%	69%	58%	73%	61%	74%	64%	64%	60%	<b>\$215</b>	<b>\$361</b>
Perc	20	29	18	34	83	7	88	95	34	14	16	50	53

Traits Observed: 200WT,600WT,Genomics

The first of the 2 year olds and a bull that's a real powerhouse. He is big, thick, soft and packed with red meat from top to bottom. Definitely one of our favourites in the 2 year old draft. Out of a Gunsmoke daughter who has been some of our highest performing cows for a while now, combined with Powerpoint's he has a neat pedigree and some nice data to go with it. Including a +5.1 IMF which for a bull at his shape and size is rare.

Purchaser:..... \$:.....



SIRE -Alpine Special 07910

**XLBEEF AP 38 SPECIAL V20<sup>PV</sup>**

**Id:** NVN24V20      **DOB:** 29/04/2024      **Mating:** AI      **HBR**

*Genetic Conditions: AMFU,CAFU,DDFU,NHFU*

EF COMMANDO 1366<sup>PV</sup>  
 BALDRIDGE 38 SPECIAL<sup>PV</sup>  
 BALDRIDGE ISABEL Y69<sup>#</sup>  
**Sire: CGK21S021 ALPINE 38 SPECIAL S021<sup>PV</sup>**  
 COONAMBLE HECTOR H249<sup>SV</sup>  
 ALPINE LOWAN M003<sup>SV</sup>  
 ALPINE EVIKA E279<sup>#</sup>  
 G A R ASHLAND<sup>PV</sup>  
 G A R HOME TOWN<sup>PV</sup>  
 CHAIR ROCK SURE FIRE 6095<sup>#</sup>  
**Dam: NVN21S22 XLBEEF MARY S22<sup>SV</sup>**  
 G A R PROPHET<sup>SV</sup>  
 XLBEEF MARY M4<sup>#</sup>  
 XLBEEF KILLARNET K12<sup>#</sup>

**MID JUNE 2026 TRANSTASMAN ANGUS CATTLE EVALUATION**

TACE	CEDir	CEDtrs	GL	BW	200	400	600	MCW	MBC	MCH	Milk	SS	DC
<b>EBV</b>	<b>+3.3</b>	<b>+9.4</b>	<b>-5.6</b>	<b>+2.6</b>	<b>+51</b>	<b>+88</b>	<b>+103</b>	<b>+57</b>	<b>+0.22</b>	<b>+8.5</b>	<b>+17</b>	<b>+4.1</b>	<b>-7.6</b>
Acc	69%	60%	83%	83%	84%	82%	83%	80%	71%	81%	76%	80%	46%
Perc	48	3	35	25	54	68	85	97	73	44	58	6	8
TACE	CWT	EMA	Rib	P8	RBV	IMF	NFI-F	Doc	Claw	Angle	Leg	INDEXES	
<b>EBV</b>	<b>+52</b>	<b>+10.0</b>	<b>+1.3</b>	<b>-0.3</b>	<b>+0.0</b>	<b>+4.0</b>	<b>+0.35</b>	<b>+30</b>	<b>+0.96</b>	<b>+0.74</b>	<b>+0.70</b>	<b>\$A</b>	<b>\$A-L</b>
Acc	72%	72%	71%	72%	63%	76%	65%	79%	68%	68%	64%	<b>\$265</b>	<b>\$401</b>
Perc	89	18	23	51	69	20	62	18	74	7	1	7	22

Traits Observed: GL,200WT,600WT,Genomics

V20 is a big long, smooth backed bull with an outstanding temperament. 38 special progeny have been performing really well for a few years now with his bulls topping several recent sales. V20 is a prime example of the quality he leaves you. Balanced EBV set suitable for heifers and a pleasure to handle.

Purchaser:..... \$:.....



**XLBEEF TRUE NORTH V47<sup>PV</sup>**

**Id:** NVN24V47      **DOB:** 16/06/2024      **Mating:** AI      **HBR**

*Genetic Conditions: AMFU,CAFU,DDFU,NHFU*

COLEMAN CHARLO 0256<sup>PV</sup>  
 S A V RAINFALL 6846<sup>PV</sup>  
 S A V BLACKCAP MAY 4136<sup>#</sup>  
**Sire: USA19405246 SQUARE B TRUE NORTH 8052<sup>PV</sup>**  
 CONNEALY CONSENSUS<sup>#</sup>  
 ELBANNA OF CONANGA 1209<sup>#</sup>  
 ELBASTA OF CONANGA 9703<sup>#</sup>  
 LD CAPITALIST 316<sup>PV</sup>  
 MUSGRAVE 316 EXCLUSIVE<sup>PV</sup>  
 MUSGRAVE PRIM LASSIE 163-386<sup>#</sup>  
**Dam: NVNR9 XLBEEF PRUE R9<sup>PV</sup>**  
 MILLAH MURRAH KINGDOM K35<sup>PV</sup>  
 MILLAH MURRAH PRUE M119<sup>PV</sup>  
 MILLAH MURRAH PRUE H4<sup>SV</sup>



Maternal brother sells  
 LOT 26 -NVN25W37



XL Beef Prue U38 - Maternal sister

**MID JUNE 2026 TRANSTASMAN ANGUS CATTLE EVALUATION**

TACE	CEDir	CEDtrs	GL	BW	200	400	600	MCW	MBC	MCH	Milk	SS	DC
<b>EBV</b>	<b>+8.6</b>	<b>+7.1</b>	<b>-7.9</b>	<b>+1.5</b>	<b>+43</b>	<b>+89</b>	<b>+107</b>	<b>+77</b>	<b>+0.08</b>	<b>+6.4</b>	<b>+29</b>	<b>+1.2</b>	<b>-4.1</b>
Acc	68%	59%	83%	83%	83%	82%	82%	79%	66%	77%	76%	80%	44%
Perc	6	14	10	11	87	67	80	85	95	81	3	83	70
TACE	CWT	EMA	Rib	P8	RBV	IMF	NFI-F	Doc	Claw	Angle	Leg	INDEXES	
<b>EBV</b>	<b>+53</b>	<b>+10.5</b>	<b>+3.6</b>	<b>+4.2</b>	<b>+0.4</b>	<b>+2.9</b>	<b>+0.24</b>	<b>+15</b>	<b>+0.68</b>	<b>+1.06</b>	<b>+1.24</b>	<b>\$A</b>	<b>\$A-L</b>
Acc	71%	71%	70%	71%	62%	75%	62%	78%	69%	69%	65%	<b>\$229</b>	<b>\$370</b>
Perc	89	15	3	4	46	41	50	75	20	71	95	33	46

Traits Observed: GL,200WT,600WT,Genomics

The Only True North in this year's sale draft and a real maternal Cow maker in the making. Purple pedigree especially on the female side that includes Millah Murrah Prue M119 & Millah Murrah Prue H4 the dam of AI sire Millah Murrah Klooney put that with the performance of True North V47 is a nice prospect. Suitable for heifers, outstanding Carcase data Ribs & Rump fat top 3%, EMA Top 15%. Maternal brother sells lot 26.

Purchaser:..... \$:.....



**XLBEEF S/ATTRACTIVE V57<sup>PV</sup>**

**Id:** NVN24V57      **DOB:** 26/06/2024      **Mating:** AI      **HBR**

*Genetic Conditions: AMFU,CAFU,DDFU,NHFU*

SITZ TOP GAME 561X#  
 JMB TRACTION 292<sup>PV</sup>  
 JMB EMULOTA 013#

**Sire: USA18272797 SCHIEFELBEIN ATTRACTIVE 4565<sup>PV</sup>**

S A V FINAL ANSWER 0035#  
 FROSTY ANSWER 3979#  
 FROSTY ELBA LIZZY 1106#  
 EF COMMANDO 1366<sup>PV</sup>  
 BALDRIDGE BRONC<sup>SV</sup>  
 BALDRIDGE ISABEL Y69#

**Dam: NVNP112 XLBEEF PRINCESS P112<sup>PV</sup>**

THE GRANGE WHEEL WRIGHT D6<sup>PV</sup>  
 CARABAR DIANA J128<sup>SV</sup>  
 CARABAR DIANA D110<sup>SV</sup>



Maternal brother sells  
 LOT 5 -NVN25W21 (2)



XL Beef Fireball S14 - Maternal  
 Brother - Sire to LOTS 12 & 29

**MID JUNE 2026 TRANSTASMAN ANGUS CATTLE EVALUATION**

TACE	CEDir	CEDtrs	GL	BW	200	400	600	MCW	MBC	MCH	Milk	SS	DC
<b>EBV</b>	<b>+2.0</b>	<b>+3.9</b>	<b>-1.9</b>	<b>+4.6</b>	<b>+61</b>	<b>+105</b>	<b>+132</b>	<b>+96</b>	<b>+0.26</b>	<b>+4.5</b>	<b>+17</b>	<b>+1.2</b>	<b>-5.2</b>
Acc	68%	59%	83%	82%	83%	81%	82%	79%	68%	79%	76%	80%	45%
Perc	60	47	87	67	14	22	28	61	62	96	52	83	45
TACE	CWT	EMA	Rib	P8	RBV	IMF	NFI-F	Doc	Claw	Angle	Leg	INDEXES	
<b>EBV</b>	<b>+82</b>	<b>+2.3</b>	<b>-0.2</b>	<b>-0.5</b>	<b>-0.4</b>	<b>+1.8</b>	<b>+0.51</b>	<b>+16</b>	<b>+1.10</b>	<b>+0.84</b>	<b>+0.88</b>	<b>\$A</b>	<b>\$A-L</b>
Acc	72%	71%	71%	72%	62%	75%	63%	76%	70%	70%	60%	<b>\$224</b>	<b>\$371</b>
Perc	17	91	55	55	86	68	78	71	92	20	13	39	44

Traits Observed: GL,200WT,600WT,Genomics

V57 is a big, strong wide backed meat machine. Back by one our foundation's female line's in Dianna J128. P112 has been a consistent performer with one of her sons S14 retained as a stud sire. S14 has 2 progeny in this year's sale draft lots 12 & 29 V57 comes with a balanced data set. He is a sire that will no doubt add kg's to his progeny which will in turn put more money in your pocket.

Purchaser:..... \$:.....

**LOT 12**

**Bulls 23 - 28 months**



**XLBEEF XL FIREBALL V70<sup>SV</sup>**

**Id:** NVN24V70      **DOB:** 16/08/2024      **Mating:** Natural      **HBR**

*Genetic Conditions: AMFU,CAFU,DDFU,NHFU*

G A R SURE FIRE 6404#  
 GB FIREBALL 672<sup>PV</sup>  
 GB ANTICIPATION 432#  
**Sire: NVN21S14 XLBEEF FIREBALL S14<sup>PV</sup>**  
 BALDRIDGE BRONC<sup>SV</sup>  
 XLBEEF PRINCESS P112<sup>PV</sup>  
 CARABAR DIANA J128<sup>SV</sup>  
 CONNEALY CONSENSUS#  
 CONNEALY CONSENSUS 7229<sup>SV</sup>  
 BLUE LILLY OF CONANGA 16#

**Dam: NVNJ14 XLBEEF JENNIFER J14#**  
 YTHANBRAE NEW DESIGN 036 V1035#  
 DOUBLE D NEW DESIGN V1035 Z13#  
 WALHALLA FEDERATION+93#



NVN22T89 -Maternal Brother -  
 ICEMAN T89 2023  
 SECOND TOP PRICE BULL



S14 Daughter sells  
 LOT 29 - NVN24V95

**MID JUNE 2026 TRANSTASMAN ANGUS CATTLE EVALUATION**

TACE	CEDir	CEDtrs	GL	BW	200	400	600	MCW	MBC	MCH	Milk	SS	DC
<b>EBV</b>	-2.4	-2.3	-3.7	+6.1	<b>+61</b>	<b>+106</b>	<b>+127</b>	<b>+120</b>	<b>+0.48</b>	<b>+7.7</b>	<b>+18</b>	<b>+4.1</b>	<b>-8.0</b>
Acc	67%	58%	82%	82%	83%	81%	81%	79%	67%	78%	75%	79%	44%
Perc	86	91	65	90	14	20	37	25	10	60	47	6	6
TACE	CWT	EMA	Rib	P8	RBV	IMF	NFI-F	Doc	Claw	Angle	Leg	INDEXES	
<b>EBV</b>	<b>+69</b>	<b>+11.8</b>	-3.1	-3.9	<b>+1.6</b>	<b>+2.0</b>	<b>-0.35</b>	<b>+20</b>	<b>+0.98</b>	<b>+0.90</b>	<b>+0.94</b>	<b>\$A</b>	<b>\$A-L</b>
Acc	71%	70%	70%	71%	60%	75%	63%	76%	65%	65%	60%	<b>\$249</b>	<b>\$412</b>
Perc	49	9	96	94	4	63	6	51	78	33	25	15	15

Traits Observed: 200WT,600WT,Genomics

A growthy, big, solid, strong bull V70 packs a real punch. Big boned, plenty of volume and length he sure is a power house. Maternal brother T89 was our 2023 sale topper. & breeding traits in the top 10% of the breed. If you're looking for a terminal sire to add Kg's to his progeny V70 certainly fits the bill.

Purchaser:..... \$:.....

**LOT 13**

**Bulls 23 to 28 months**



**XLBEEF CRAFTSMAN V79<sup>SV</sup>**

**Id:** NVN24V79      **DOB:** 19/09/2024      **Mating:** AI      **HBR**

*Genetic Conditions: AMFU,CAFU,DDFU,NHFU*

SITZ STELLAR 726D<sup>PV</sup>  
 SITZ RESILIENT 10208<sup>PV</sup>  
 SITZ MISS BURGESS 1856<sup>#</sup>  
**Sire: USA20132505 CONNEALY CRAFTSMAN<sup>PV</sup>**  
 CONNEALY NIOBRARA 5451<sup>#</sup>  
 BLACK CATHY OF CONANGA 8521<sup>#</sup>  
 BLACK CARLA OF CONANGA 450<sup>#</sup>  
 B/R NEW DAY 454<sup>#</sup>  
 V A R RESERVE 1111<sup>PV</sup>  
 SANDPOINT BLACKBIRD 8809<sup>#</sup>  
**Dam: SYA21S119 STONEY POINT COOLABAH S119<sup>PV</sup>**  
 STONEY POINT LANCELOT L07<sup>SV</sup>  
 STONEY POINT COOLABAH Q166<sup>PV</sup>  
 STONEY POINT COOLABAH N100<sup>PV</sup>



NVN24V93 - CONNEALY CRAFTSMAN daughter



U91 Maternal brother

**MID JUNE 2026 TRANSTASMAN ANGUS CATTLE EVALUATION**

TACE	CEDir	CEDtrs	GL	BW	200	400	600	MCW	MBC	MCH	Milk	SS	DC
<b>EBV</b>	<b>+7.4</b>	<b>+4.8</b>	<b>-9.7</b>	<b>+3.9</b>	<b>+60</b>	<b>+107</b>	<b>+129</b>	<b>+113</b>	<b>+0.29</b>	<b>+6.4</b>	<b>+25</b>	<b>+0.5</b>	<b>-9.0</b>
Acc	69%	57%	83%	83%	84%	82%	82%	79%	69%	79%	75%	80%	43%
Perc	12	37	3	52	18	18	34	34	53	81	10	95	2
TACE	CWT	EMA	Rib	P8	RBV	IMF	NFI-F	Doc	Claw	Angle	Leg	INDEXES	
<b>EBV</b>	<b>+76</b>	<b>+10.0</b>	<b>+0.7</b>	<b>+2.3</b>	<b>+0.3</b>	<b>+1.4</b>	<b>+0.43</b>	<b>+22</b>	<b>+0.82</b>	<b>+0.92</b>	<b>+0.84</b>	<b>\$A</b>	<b>\$A-L</b>
Acc	71%	71%	70%	71%	62%	75%	63%	79%	72%	72%	66%	<b>\$276</b>	<b>\$460</b>
Perc	29	18	34	14	52	76	71	43	47	38	8	4	2

Traits Observed: GL,200WT,600WT,Genomics

A stylish smooth bodied son of Craftsman with a real sire outlook. His dam S119 is a cracking female and is set to hit the donor pen in the coming months after performing exceptionally well the last few seasons. V79 is a suitable for heifers and that is backed up in his data with his calving ease EBV's ranking as high as the Top 3%.

Purchaser:..... \$:.....

Top 15% EBV



**XLBEEF TRUE NORTH V49<sup>SV</sup>**

**Id:** NVN24V49      **DOB:** 21/06/2024      **Mating:** AI      **APR**

*Genetic Conditions: AMFU,CAFU,DDFU,NHF*

COLEMAN CHARLO 0256<sup>PV</sup>  
 S A V RAINFALL 6846<sup>PV</sup>  
 S A V BLACKCAP MAY 4136<sup>#</sup>

**Sire: USA19405246 SQUARE B TRUE NORTH 8052<sup>PV</sup>**

CONNEALY CONSENSUS<sup>#</sup>  
 ELBANNA OF CONANGA 1209<sup>#</sup>  
 ELBASTA OF CONANGA 9703<sup>#</sup>  
 A A R TEN X 7008 S A<sup>SV</sup>  
 DEER VALLEY ALL IN<sup>SV</sup>  
 DEER VALLEY RITA 0274<sup>#</sup>

**Dam: QBJL11 DANCE ALL IN L11<sup>#</sup>**

YTHANBRAE NEW DESIGN 036 V1035<sup>#</sup>  
 DOUBLE D NEW DESIGN V1035 Z61<sup>#</sup>  
 DOUBLE D<sup>#</sup>



TRUE NORTH - SIRE



TRUE NORTH Son sells  
 LOT 10- NVN24V47 (2)

**MID JUNE 2026 TRANSTASMAN ANGUS CATTLE EVALUATION**

TACE	CEDir	CEDtrs	GL	BW	200	400	600	MCW	MBC	MCH	Milk	SS	DC
<b>EBV</b>	<b>+4.0</b>	<b>+7.2</b>	<b>-7.2</b>	<b>+2.3</b>	<b>+46</b>	<b>+79</b>	<b>+102</b>	<b>+55</b>	<b>-0.04</b>	<b>+5.6</b>	<b>+23</b>	<b>+1.4</b>	<b>-3.3</b>
Acc	68%	58%	83%	82%	83%	82%	82%	79%	67%	78%	75%	80%	44%
Perc	41	13	15	20	78	87	86	97	99	89	14	77	84

TACE	CWT	EMA	Rib	P8	RBV	IMF	NFI-F	Doc	Claw	Angle	Leg	INDEXES	
<b>EBV</b>	<b>+59</b>	<b>+1.8</b>	<b>+2.0</b>	<b>+1.1</b>	<b>-0.8</b>	<b>+3.1</b>	<b>+0.68</b>	<b>+13</b>	<b>+1.02</b>	<b>+1.12</b>	<b>+0.96</b>	<b>\$A</b>	<b>\$A-L</b>
Acc	71%	71%	70%	71%	62%	75%	62%	77%	69%	69%	65%	<b>\$188</b>	<b>\$298</b>
Perc	78	94	13	28	95	36	89	78	83	82	30	76	89

Traits Observed: GL,200WT,600WT,Genomics

Growthy soft son of True North. V49 is a real cow maker with, Deer Valley All In, on the dams side, certainly old genetics but also very solid and proven he was used here early in the piece and sure did leave some outstanding females with many still going today. He is a big strong boy with a great temperament and a very nice phenotype. Suitable for heifers and that is backed up in his data with some very favourable calving ease EBV's.

Purchaser:..... \$:.....



**XLBEEF PP3R V72<sup>SV</sup>**

**Id:** NVN24V72      **DOB:** 29/08/2024      **Mating:** Natural      **HBR**

*Genetic Conditions: AMFU,CAFU,DDFU,NHFU*

TEHAMA REVERE<sup>#</sup>  
 S POWERPOINT WS 5503<sup>PV</sup>  
 S QUEEN ESSA 248<sup>#</sup>

**Sire: KNA21S020 3RLS POWERPOINT S020<sup>PV</sup>**

MILWILLAH GATSBY G279<sup>PV</sup>  
 CLUNIE RANGE MAYFLOWER K328<sup>SV</sup>  
 CLUNIE RANGE MAYFLOWER G338<sup>PV</sup>  
 TEHAMA REVERE<sup>#</sup>  
 S POWERPOINT WS 5503<sup>PV</sup>  
 S QUEEN ESSA 248<sup>#</sup>

**Dam: NVNR29 XLBEEF REMMA R29<sup>SV</sup>**

S A V INTERNATIONAL 2020<sup>#</sup>  
 XLBEEF MISS INTERNATIONAL M118<sup>SV</sup>  
 ANGURU DOMINIQUE D11<sup>#</sup>



**SIRE - 3R POWERPOINT S20**



**XL Beef Remma U16 - Maternal sister**

**MID JUNE 2026 TRANSTASMAN ANGUS CATTLE EVALUATION**

TACE	CEDir	CEDtrs	GL	BW	200	400	600	MCW	MBC	MCH	Milk	SS	DC
<b>EBV</b>	-0.1	<b>+8.0</b>	-4.1	<b>+4.0</b>	<b>+49</b>	<b>+95</b>	<b>+124</b>	<b>+104</b>	<b>+0.21</b>	<b>+7.8</b>	<b>+22</b>	<b>+1.0</b>	<b>-5.1</b>
Acc	67%	58%	82%	82%	83%	81%	82%	79%	62%	74%	75%	79%	42%
Perc	75	8	58	54	63	49	44	48	76	58	23	87	47
TACE	CWT	EMA	Rib	P8	RBV	IMF	NFI-F	Doc	Claw	Angle	Leg	INDEXES	
<b>EBV</b>	<b>+78</b>	<b>+10.1</b>	<b>+0.1</b>	<b>+0.1</b>	<b>+0.3</b>	<b>+2.3</b>	<b>+0.20</b>	<b>-4</b>	<b>+0.98</b>	<b>+0.84</b>	<b>+0.92</b>	<b>\$A</b>	<b>\$A-L</b>
Acc	70%	69%	69%	70%	60%	74%	62%	75%	59%	59%	53%	<b>\$209</b>	<b>\$359</b>
Perc	26	18	48	44	52	55	46	99	78	20	20	56	55

Traits Observed: 200WT,600WT,Genomics

A real balanced calf here V72 is wide and backed, very smooth through the shoulders and built with plenty of natural thickness. Out of an impressive Gunsmoke P8 daughter and Power point on the sire side make for a very interesting pedigree and one we thought would. He comes with solid data across the board & is suitable for heifers.

Purchaser:..... \$:.....







**XLBEEF S/FUND V71<sup>SV</sup>**

**Id:** NVN24V71      **DOB:** 29/08/2024      **Mating:** AI      **HBR**

*Genetic Conditions:* AMFU,CAFU,DDFU,NHFU

**Sire:** USA19411210 EXAR STOCK FUND 9097B<sup>PV</sup>  
 BASIN PAYWEIGHT 1682<sup>PV</sup>  
 DEER VALLEY GROWTH FUND#  
 DEER VALLEY RITA 36113#  
 G A R PROPHET K243#  
 EXAR EMPRESS 0875#  
 EXAR EMPRESS 2622#  
 LD CAPITALIST 316<sup>PV</sup>  
 MUSGRAVE 316 STUNNER<sup>PV</sup>  
 MCATL BLACKBIRD 831-1378#

**Dam:** NVNR1 XLBEEF DIANA R1<sup>PV</sup>  
 G A R PROPHET<sup>SV</sup>  
 XLBEEF MISS PROFIT M68<sup>PV</sup>  
 CARABAR DIANA J128<sup>SV</sup>



STOCKFUND Daughter sells  
 LOT 31 - NVN24V77



XL Beef S Fund U82 -  
 Maternal Brother

**MID JUNE 2026 TRANSTASMAN ANGUS CATTLE EVALUATION**

TACE	CEDir	CEDtrs	GL	BW	200	400	600	MCW	MBC	MCH	Milk	SS	DC
<b>EBV</b>	<b>+0.4</b>	<b>-0.5</b>	<b>-3.5</b>	<b>+4.2</b>	<b>+60</b>	<b>+99</b>	<b>+118</b>	<b>+87</b>	<b>+0.10</b>	<b>+6.2</b>	<b>+21</b>	<b>+1.1</b>	<b>-5.1</b>
Acc	68%	59%	83%	83%	84%	82%	82%	80%	71%	82%	77%	80%	46%
Perc	72	84	68	59	16	37	57	73	93	84	28	85	47

TACE	CWT	EMA	Rib	P8	RBY	IMF	NFI-F	Doc	Claw	Angle	Leg	INDEXES	
<b>EBV</b>	<b>+68</b>	<b>+4.6</b>	<b>+0.9</b>	<b>+0.5</b>	<b>-0.4</b>	<b>+1.5</b>	<b>-0.33</b>	<b>+27</b>	<b>+0.90</b>	<b>+0.98</b>	<b>+0.94</b>	<b>\$A</b>	<b>\$A-L</b>
Acc	72%	72%	71%	72%	63%	75%	63%	76%	69%	69%	61%	<b>\$214</b>	<b>\$346</b>
Perc	53	75	30	38	86	74	6	26	63	53	25	50	65

Traits Observed: GL,200WT,600WT,Genomics

A moderate thick soft easy fleshing low maintenance calf V71 is certainly a little meat machine that will no doubt add thickness & doing ability to his progeny. He is very easy on the eye and comes with a very balanced data spread put together with the backing of a great female line in Diana J128 and an awesome temperament V71 is a nice package.

Purchaser:..... \$:.....

**LOT 17**

**Bulls 23 to 28 months**



**XLBEEF MF/SQUARE V84<sup>SV</sup>**

**Id:** NVN24V84      **DOB:** 23/09/2024      **Mating:** AI      **HBR**

*Genetic Conditions: AMFU,CAFU,DDFU,NHFU*

CONNEALY CONFIDENCE PLUS<sup>#</sup>  
 WOODHILL BLUEPRINT<sup>PV</sup>  
 WOODHILL EVERGREEN Z291-B233<sup>#</sup>

**Sire:** USA19418329 MYERS FAIR-N-SQUARE M39<sup>PV</sup>

CONNEALY THUNDER<sup>#</sup>  
 MYERS MISS BEAUTY M136<sup>#</sup>  
 MYERS MISS BEAUTY M476<sup>#</sup>  
 C R A BEXTOR 872 5205 608<sup>#</sup>  
 G A R PROPHET<sup>SV</sup>  
 G A R OBJECTIVE 1885<sup>#</sup>

**Dam:** NVNN116 XLBEEF DIANA N116<sup>#</sup>

THE GRANGE WHEEL WRIGHT D6<sup>PV</sup>  
 CARABAR DIANA J128<sup>SV</sup>  
 CARABAR DIANA D110<sup>SV</sup>



J128 - GRANDAM



MYERS FAIR- N-SQUARE  
 Daughter sells LOT 37 - NVN24V85

**MID JUNE 2026 TRANSTASMAN ANGUS CATTLE EVALUATION**

TACE	CEDir	CEDtrs	GL	BW	200	400	600	MCW	MBC	MCH	Milk	SS	DC
EBV	-4.0	-5.4	-6.3	+7.5	+67	+123	+154	+144	+0.40	+9.9	+17	+1.1	-6.6
Acc	70%	61%	84%	83%	84%	83%	83%	81%	68%	79%	78%	81%	47%
Perc	91	97	25	98	4	3	5	6	24	20	52	85	19

TACE	CWT	EMA	Rib	P8	RBV	IMF	NFI-F	Doc	Claw	Angle	Leg	INDEXES	
EBV	+88	+3.2	+0.1	+0.5	-1.3	+2.7	+0.04	+24	+0.56	+0.90	+1.02	\$A	\$A-L
Acc	73%	73%	72%	73%	65%	77%	65%	79%	69%	69%	63%	\$215	\$387
Perc	9	86	48	38	99	45	29	36	7	33	49	49	31

Traits Observed: GL,200WT,600WT,Genomics

V84 is a moderate deep, soft easy fleshing calf with plenty of volume. Again backed by that outstanding cow family in Diana J128 who is spread right through the catalogue. He comes with some very nice data with it Top 5% for all growth traits, top 10% carcass weight & claw set. He sure is an extremely balanced unit.

Purchaser:..... \$:.....

Top 15% EBV



**XLBEEF T/TESTAMENT V86<sup>SV</sup>**

**Id:** NVN24V86      **DOB:** 25/09/2024      **Mating:** AI      **HBR**

*Genetic Conditions: AMFU,CAFU,DDFU,NHFU*

**Sire: USA20019500 TEHAMA TESTAMENT<sup>SV</sup>**  
 S S NIAGARA Z29<sup>SV</sup>  
 TEHAMA PATRIARCH F028<sup>PV</sup>  
 TEHAMA ELITE BLACKBIRD D826<sup>#</sup>  
 SITZ WISDOM 481T<sup>#</sup>  
 TEHAMA MARY BLACKBIRD E789<sup>#</sup>  
 TEHAMA MARY BLACKBIRD Y677<sup>#</sup>  
 MYTTY IN FOCUS<sup>#</sup>  
 SUMMITCREST FOCUS 2U66<sup>SV</sup>  
 SUMMITCREST ELBA 1M17<sup>#</sup>

**Dam: NVNK18 XLBEEF KAITLIN K18<sup>SV</sup>**  
 TC TOTAL 410<sup>#</sup>  
 ANGURU HARMONY H84<sup>#</sup>  
 ANGURU CHER C17<sup>#</sup>



TESTAMENT SON Sells  
 LOT 22 - NVN25W32



TESTAMENT SON Sells  
 LOT 24 - NVN24W47

**MID JUNE 2026 TRANSTASMAN ANGUS CATTLE EVALUATION**

TACE	CEDir	CEDtrs	GL	BW	200	400	600	MCW	MBC	MCH	Milk	SS	DC
<b>EBV</b>	<b>+7.3</b>	<b>+2.3</b>	<b>-5.3</b>	<b>+2.2</b>	<b>+47</b>	<b>+80</b>	<b>+100</b>	<b>+89</b>	<b>+0.30</b>	<b>+7.6</b>	<b>+16</b>	<b>+4.0</b>	<b>-5.9</b>
Acc	69%	58%	83%	83%	84%	82%	82%	80%	69%	80%	76%	80%	43%
Perc	13	64	39	19	74	87	88	71	50	61	66	7	30
TACE	CWT	EMA	Rib	P8	RBV	IMF	NFI-F	Doc	Claw	Angle	Leg	INDEXES	
<b>EBV</b>	<b>+48</b>	<b>+3.8</b>	<b>+1.7</b>	<b>+2.1</b>	<b>-1.0</b>	<b>+3.8</b>	<b>+0.50</b>	<b>+27</b>	<b>+0.52</b>	<b>+0.82</b>	<b>+0.88</b>	<b>\$A</b>	<b>\$A-L</b>
Acc	71%	71%	70%	71%	62%	75%	62%	78%	70%	70%	65%	<b>\$188</b>	<b>\$333</b>
Perc	94	82	17	16	97	23	77	25	4	17	13	77	73

Traits Observed: GL,200WT,600WT,Genomics

A thick set moderate calf here with plenty of depth and volume. Neat phenotype, great temperament and suitable for heifers backed up by some nice calving ease EBV's. Throw in some solid carcass data as well and V86 certainly kicks some boxes. He would be suited to many different operations and seeing how he grows out will be interesting.

Purchaser:..... \$:.....

**LOT 19**

**Bulls 23 to 28 months**



**XLBEEF CRAFTSMAN V88<sup>SV</sup>**

**Id:** NVN24V88      **DOB:** 26/09/2024      **Mating:** AI      **HBR**

*Genetic Conditions: AMFU,CAFU,DDFU,NHFU*

SITZ STELLAR 726D<sup>PV</sup>  
 SITZ RESILIENT 10208<sup>PV</sup>  
 SITZ MISS BURGESS 1856<sup>#</sup>  
**Sire: USA20132505 CONNEALY CRAFTSMAN<sup>PV</sup>**  
 CONNEALY NIOBRARA 5451<sup>#</sup>  
 BLACK CATHY OF CONANGA 8521<sup>#</sup>  
 BLACK CARLA OF CONANGA 450<sup>#</sup>  
 TE MANIA BERKLEY B1<sup>PV</sup>  
 TE MANIA EMPEROR E343<sup>PV</sup>  
 TE MANIA LOWAN Z74<sup>PV</sup>

**Dam: NVNL48 XLBEEF PRINCESS L48<sup>#</sup>**  
 TC ABERDEEN 759<sup>SV</sup>  
 ABERDEEN ESTATE PRINCESS J9<sup>PV</sup>  
 ARDROSSAN PRINCESS W38<sup>PV</sup>



CRAFTSMAN SON Out of the same princess line sells LOT 7 - NVN25W1



XL Beef Princess U111

**MID JUNE 2026 TRANSTASMAN ANGUS CATTLE EVALUATION**

TACE	CEDir	CEDtrs	GL	BW	200	400	600	MCW	MBC	MCH	Milk	SS	DC
<b>EBV</b>	<b>+5.9</b>	<b>+7.9</b>	<b>-4.5</b>	<b>+1.0</b>	<b>+47</b>	<b>+97</b>	<b>+108</b>	<b>+62</b>	<b>+0.24</b>	<b>+6.4</b>	<b>+26</b>	<b>+1.4</b>	<b>-7.0</b>
Acc	69%	58%	83%	83%	84%	82%	82%	79%	69%	80%	75%	80%	45%
Perc	24	9	52	7	74	43	78	95	68	81	6	77	14
TACE	CWT	EMA	Rib	P8	RBV	IMF	NFI-F	Doc	Claw	Angle	Leg	INDEXES	
<b>EBV</b>	<b>+64</b>	<b>+11.0</b>	<b>+0.4</b>	<b>+1.4</b>	<b>+0.4</b>	<b>+3.7</b>	<b>+1.21</b>	<b>+31</b>	<b>+0.74</b>	<b>+0.80</b>	<b>+0.76</b>	<b>\$A</b>	<b>\$A-L</b>
Acc	72%	71%	71%	72%	62%	75%	64%	79%	72%	71%	67%	<b>\$276</b>	<b>\$422</b>
Perc	64	12	41	24	46	24	99	16	30	14	3	4	11

**Traits Observed:** GL,200WT,600WT,Genomics  
 A smart stylish calf with a pedigree in the purple out of the Princess W38 line, a cow that has produced multiple AI sires, daughters & granddaughters breeding outstandingly in our program including J9 being the dam of our main herd sire Gunsmoke P8. Match that with the super side and high seller Connealy Craftsman V88 is definitely a smart package. He comes with outstanding performance data with calving ease followed by an excellent temperament, as well as carcass and structural indexes all proving to be very strong.

Purchaser:..... \$:.....

Top 15% EBV

www.excelgenetics.com.au

**LOT 20**

**Bulls 15 - 19 months**



**XLBEEF XL GUNSMOKE W26<sup>SV</sup>**

**Id:** NVN25W26      **DOB:** 27/04/2025      **Mating:** ET      **HBR**

*Genetic Conditions: AMFU,CAFU,DDFU,NHFU*

CARABAR GUN SMOKE G53<sup>SV</sup>  
 XLBEEF GUNSMOKE L23<sup>PV</sup>  
 CARABAR DIANA J128<sup>SV</sup>

**Sire: NVNP8 XLBEEF GUNSMOKE P8<sup>PV</sup>**

TC ABERDEEN 759<sup>SV</sup>  
 ABERDEEN ESTATE PRINCESS J9<sup>PV</sup>  
 ARDROSSAN PRINCESS W38<sup>PV</sup>  
 COONAMBLE HECTOR H249<sup>SV</sup>  
 MILLAH MURRAH NECTAR N334<sup>PV</sup>  
 MILLAH MURRAH PRUE H113<sup>PV</sup>

**Dam: NVNR41 XLBEEF JAZZY R41<sup>SV</sup>**

A A R TEN X 7008 S A<sup>SV</sup>  
 XLBEEF JAZZY J73<sup>#</sup>  
 KENNY'S CREEK PRINCESS E320<sup>SV</sup>



LOT 21 - NVN25W27



NVN21S88 - Gunsmoke P8 SON  
 who sold for 19k in 2022

**MID JUNE 2026 TRANSTASMAN ANGUS CATTLE EVALUATION**

TACE	CEDir	CEDtrs	GL	BW	200	400	600	MCW	MBC	MCH	Milk	SS	DC
<b>EBV</b>	<b>+4.2</b>	<b>-5.7</b>	<b>-6.8</b>	<b>+2.8</b>	<b>+32</b>	<b>+66</b>	<b>+87</b>	<b>+76</b>	<b>+0.39</b>	<b>+9.3</b>	<b>+15</b>	<b>+0.8</b>	<b>-4.4</b>
Acc	66%	57%	83%	82%	83%	81%	82%	79%	67%	78%	76%	79%	42%
Perc	39	98	19	28	99	98	97	86	26	29	71	91	63

TACE	CWT	EMA	Rib	P8	RBV	IMF	NFI-F	Doc	Claw	Angle	Leg	INDEXES	
<b>EBV</b>	<b>+45</b>	<b>+2.8</b>	<b>+4.4</b>	<b>+3.4</b>	<b>-1.0</b>	<b>+4.6</b>	<b>+0.19</b>	<b>+2</b>	<b>+1.00</b>	<b>+0.82</b>	<b>+0.88</b>	<b>\$A</b>	<b>\$A-L</b>
Acc	71%	69%	69%	70%	60%	74%	63%	76%	60%	60%	57%	<b>\$147</b>	<b>\$258</b>
Perc	96	89	1	7	97	12	45	98	81	17	13	95	97

**Traits Observed: Genomics**

The first of the ET Brothers, W26 is a big stylish long calf with plenty of eye-catching appeal and is only going to improve with age. Exciting pedigree that includes 2 of the best, Gunsmoke P8 has performed as the top of our program now for many years producing sale toppers for both bulls and females side and R41 has been part of our donor pen for close to 3 years now and she certainly doesn't miss. W26 comes with some exciting data suitable for heifers and packs a punch in the carcass side of things with both Rib and Rump fat and IMF all in the top 10%

Purchaser:..... \$:.....

**LOT 21**

**Bulls 15 - 19 months**



**XLBEEF XL GUNSMOKE W27<sup>SV</sup>**

**Id:** NVN25W27      **DOB:** 27/04/2025      **Mating:** ET      **HBR**

*Genetic Conditions: AMFU,CAFU,DDFU,NHFU*

CARABAR GUN SMOKE G53<sup>SV</sup>  
 XLBEEF GUNSMOKE L23<sup>PV</sup>  
 CARABAR DIANA J128<sup>SV</sup>

**Sire: NVNP8 XLBEEF GUNSMOKE P8<sup>PV</sup>**

TC ABERDEEN 759<sup>SV</sup>  
 ABERDEEN ESTATE PRINCESS J9<sup>PV</sup>  
 ARDROSSAN PRINCESS W38<sup>PV</sup>  
 COONAMBLE HECTOR H249<sup>SV</sup>  
 MILLAH MURRAH NECTAR N334<sup>PV</sup>  
 MILLAH MURRAH PRUE H113<sup>PV</sup>

**Dam: NVNR41 XLBEEF JAZZY R41<sup>SV</sup>**

A A R TEN X 7008 S A<sup>SV</sup>  
 XLBEEF JAZZY J73<sup>#</sup>  
 KENNY'S CREEK PRINCESS E320<sup>SV</sup>



ET BROTHER Sells  
 LOT 20 - NVN25W26



GUNSMOKE P8 Daughter

**MID JUNE 2026 TRANSTASMAN ANGUS CATTLE EVALUATION**

TACE	CEDir	CEDtrs	GL	BW	200	400	600	MCW	MBC	MCH	Milk	SS	DC
<b>EBV</b>	<b>+2.0</b>	<b>-5.4</b>	<b>-8.0</b>	<b>+4.9</b>	<b>+50</b>	<b>+94</b>	<b>+129</b>	<b>+147</b>	<b>+0.45</b>	<b>+10.1</b>	<b>+9</b>	<b>+1.7</b>	<b>-2.7</b>
Acc	66%	57%	82%	82%	83%	81%	82%	79%	67%	78%	76%	79%	42%
Perc	60	97	9	73	59	50	34	5	14	18	96	68	91
TACE	CWT	EMA	Rib	P8	RBV	IMF	NFI-F	Doc	Claw	Angle	Leg	INDEXES	
<b>EBV</b>	<b>+66</b>	<b>+5.3</b>	<b>+1.4</b>	<b>+0.3</b>	<b>-0.6</b>	<b>+4.1</b>	<b>+0.39</b>	<b>+8</b>	<b>+1.18</b>	<b>+1.08</b>	<b>+0.90</b>	<b>\$A</b>	<b>\$A-L</b>
Acc	71%	69%	69%	70%	59%	74%	62%	76%	61%	61%	57%	<b>\$150</b>	<b>\$312</b>
Perc	60	67	21	41	91	18	67	91	96	75	16	95	84

**Traits Observed: Genomics**

The second of the ET's brother's and a real sire prospect with huge potential. W27 certainly ticks all the box's Pedigree phenotype and data all in one package. He is big, smooth, long and when he finishes will be a real powerhouse, this fella also comes with some very impressive carcase data with a solid EMA, positive fats and a + 4.1 IMF that matched with the extreme growth of W27 sure will make him a very interesting unit as he progresses.

Purchaser:..... \$:.....



**XLBEEF TESTAMENT W32<sup>SV</sup>**

**Id:** NVN25W32      **DOB:** 30/04/2025      **Mating:** ET      **HBR**

*Genetic Conditions: AMFU,CAFU,DDFU,NHFU*

S S NIAGARA Z29<sup>SV</sup>  
 TEHAMA PATRIARCH F028<sup>PV</sup>  
 TEHAMA ELITE BLACKBIRD D826<sup>#</sup>

**Sire: USA20019500 TEHAMA TESTAMENT<sup>SV</sup>**

SITZ WISDOM 481T<sup>#</sup>  
 TEHAMA MARY BLACKBIRD E789<sup>#</sup>  
 TEHAMA MARY BLACKBIRD Y677<sup>#</sup>  
 XLBEEF GUNSMOKE L23<sup>PV</sup>  
 XLBEEF GUNSMOKE P8<sup>PV</sup>  
 ABERDEEN ESTATE PRINCESS J9<sup>PV</sup>

**Dam: NVNR43 XLBEEF LANI R43<sup>SV</sup>**

DEER VALLEY PATRIOT 3222<sup>SV</sup>  
 XLBEEF LANI N39<sup>#</sup>  
 XLBEEF LANI L76<sup>#</sup>



ET BROTHER Sells  
 LOT 23 - NVN25W31



XL Beef LANI R43 - Dam

**MID JUNE 2026 TRANSTASMAN ANGUS CATTLE EVALUATION**

TACE	CEDir	CEDtrs	GL	BW	200	400	600	MCW	MBC	MCH	Milk	SS	DC
<b>EBV</b>	<b>+0.6</b>	<b>-4.4</b>	<b>-3.0</b>	<b>+4.7</b>	<b>+52</b>	<b>+100</b>	<b>+130</b>	<b>+101</b>	<b>+0.13</b>	<b>+6.7</b>	<b>+22</b>	<b>+3.4</b>	<b>-5.8</b>
Acc	69%	57%	83%	83%	84%	82%	83%	80%	67%	79%	76%	80%	41%
Perc	71	96	75	69	49	33	32	52	90	76	22	14	32

TACE	CWT	EMA	Rib	P8	RBV	IMF	NFI-F	Doc	Claw	Angle	Leg	INDEXES	
<b>EBV</b>	<b>+72</b>	<b>+6.7</b>	<b>+1.1</b>	<b>+0.5</b>	<b>+0.3</b>	<b>+0.5</b>	<b>+0.58</b>	<b>+16</b>	<b>+0.56</b>	<b>+0.56</b>	<b>+0.68</b>	<b>\$A</b>	<b>\$A-L</b>
Acc	71%	71%	70%	71%	61%	75%	61%	78%	68%	68%	64%	<b>\$197</b>	<b>\$339</b>
Perc	42	51	26	38	52	91	83	70	7	1	1	69	69

**Traits Observed: Genomics**

The first of 2 ET brothers from star donor R43. R43 was our 2024 top selling female where we retained the rights to flush her and these 2 calves are why. They combine everything we are after in a young sire, solid pedigree, outstanding phenotype and come with great data spread across the board. W32 is an exciting prospect, he's long, thick and tracks out well with a real eye appeal. The structural data on this fella makes him a real game changer with foot & leg angle ranking him in the top 1% and claw set in the top 5%.

Purchaser:..... \$:.....

**LOT 23**

**Bulls 15 - 19 months**



**XLBEEF TESTAMENT W31<sup>SV</sup>**

**Id:** NVN25W31      **DOB:** 29/04/2025      **Mating:** ET      **HBR**

*Genetic Conditions: AMFU,CAFU,DDFU,NHFU*

S S NIAGARA Z29<sup>SV</sup>  
TEHAMA PATRIARCH F028<sup>PV</sup>  
TEHAMA ELITE BLACKBIRD D826<sup>#</sup>

**Sire: USA20019500 TEHAMA TESTAMENT<sup>SV</sup>**

SITZ WISDOM 481T<sup>#</sup>  
TEHAMA MARY BLACKBIRD E789<sup>#</sup>  
TEHAMA MARY BLACKBIRD Y677<sup>#</sup>  
XLBEEF GUNSMOKE L23<sup>PV</sup>  
XLBEEF GUNSMOKE P8<sup>PV</sup>  
ABERDEEN ESTATE PRINCESS J9<sup>PV</sup>

**Dam: NVNR43 XLBEEF LANI R43<sup>SV</sup>**

DEER VALLEY PATRIOT 3222<sup>SV</sup>  
XLBEEF LANI N39<sup>#</sup>  
XLBEEF LANI L76<sup>#</sup>



XL Beef LANI R43 - DAM



XL beef Lani T44 -  
Maternal sister to LANI R43

**MID JUNE 2026 TRANSTASMAN ANGUS CATTLE EVALUATION**

TACE	CEDir	CEDtrs	GL	BW	200	400	600	MCW	MBC	MCH	Milk	SS	DC
<b>EBV</b>	<b>+9.0</b>	<b>+0.9</b>	<b>-7.5</b>	<b>+0.2</b>	<b>+44</b>	<b>+83</b>	<b>+100</b>	<b>+50</b>	<b>+0.15</b>	<b>+3.9</b>	<b>+22</b>	<b>+3.2</b>	<b>-6.7</b>
Acc	68%	56%	83%	83%	83%	82%	82%	79%	67%	80%	76%	80%	41%
Perc	5	76	13	3	85	82	88	98	87	98	23	18	17
TACE	CWT	EMA	Rib	P8	RBV	IMF	NFI-F	Doc	Claw	Angle	Leg	INDEXES	
<b>EBV</b>	<b>+60</b>	<b>+9.6</b>	<b>+3.0</b>	<b>+5.1</b>	<b>-0.5</b>	<b>+2.7</b>	<b>+0.98</b>	<b>+0</b>	<b>+0.86</b>	<b>+0.58</b>	<b>+0.68</b>	<b>\$A</b>	<b>\$A-L</b>
Acc	71%	70%	70%	71%	61%	74%	61%	78%	68%	68%	65%	<b>\$235</b>	<b>\$359</b>
Perc	76	21	6	2	89	45	98	99	55	1	1	27	55

**Traits Observed:** BWT,200WT,Genomics

A ET Brother to the previous lot, W31 is a smart Stylish calf with again plenty to offer, backed by the outstanding LANI female line which has continued to impress in our program where they rarely miss, he is long, smooth with plenty of depth and volume. Just like his brother this fella has a real, look at me, factor. Again coming in with impressive data overall but specifically with both carcase and structural EBV's is a wow feature of this bull. Definitely worth your time to inspect and consider W31.

Purchaser:..... \$:.....



**XLBEEF TESTAMENT W47<sup>SV</sup>**

**Id:** NVN25W47      **DOB:** 14/05/2025      **Mating:** AI      **HBR**

*Genetic Conditions: AMFU,CAFU,DDFU,NHFU*

S S NIAGARA Z29<sup>SV</sup>  
 TEHAMA PATRIARCH F028<sup>PV</sup>  
 TEHAMA ELITE BLACKBIRD D826<sup>#</sup>

**Sire: USA20019500 TEHAMA TESTAMENT<sup>SV</sup>**

SITZ WISDOM 481T<sup>#</sup>  
 TEHAMA MARY BLACKBIRD E789<sup>#</sup>  
 TEHAMA MARY BLACKBIRD Y677<sup>#</sup>  
 HOOVER NO DOUBT<sup>PV</sup>  
 E G EYES ONYOU<sup>PV</sup>  
 BALDRIDGE ISABEL D275<sup>#</sup>

**Dam: NVN23U11 XLBEEF LANI U11<sup>SV</sup>**

XLBEEF GUNSMOKE P8<sup>PV</sup>  
 XLBEEF LANI R43<sup>SV</sup>  
 XLBEEF LANI N39<sup>#</sup>



TESTAMENT SON Sells LOT 22 - NVN25W32



XL Beef LANI R43 - Grand dam

**MID JUNE 2026 TRANSTASMAN ANGUS CATTLE EVALUATION**

TACE	CEDir	CEDtrs	GL	BW	200	400	600	MCW	MBC	MCH	Milk	SS	DC
<b>EBV</b>	<b>+4.3</b>	<b>+2.9</b>	<b>-3.8</b>	<b>+3.5</b>	<b>+62</b>	<b>+111</b>	<b>+139</b>	<b>+111</b>	<b>+0.36</b>	<b>+8.0</b>	<b>+20</b>	<b>+2.7</b>	<b>-4.7</b>
Acc	70%	58%	83%	83%	84%	82%	83%	80%	68%	81%	76%	81%	42%
Perc	38	58	63	43	12	11	16	36	33	54	32	31	56
TACE	CWT	EMA	Rib	P8	RBV	IMF	NFI-F	Doc	Claw	Angle	Leg	INDEXES	
<b>EBV</b>	<b>+81</b>	<b>+8.9</b>	<b>-0.7</b>	<b>+0.3</b>	<b>+0.0</b>	<b>+2.3</b>	<b>+0.29</b>	<b>+22</b>	<b>+0.86</b>	<b>+0.98</b>	<b>+0.88</b>	<b>\$A</b>	<b>\$A-L</b>
Acc	71%	71%	71%	71%	62%	75%	62%	79%	69%	69%	64%	<b>\$242</b>	<b>\$408</b>
Perc	19	27	66	41	69	55	56	45	55	53	13	20	17

Traits Observed: GL,BWT,200WT,Genomics

A moderately thick set, soft and easy going, low maintenance calf here, he's deep and wide with plenty of power & volume behind him. Again from the LANI cow family he comes with a strong pedigree, but with the balanced data spread W47 is a very nice package that will suit a wide range of operations. He will easily add Kg's and softness to his progeny in turn putting more dollars in your pocket. This bull is the full package.

Purchaser:..... \$:.....

**LOT 25**

**Bulls 15 - 19 months**



**XLBEEF CRAFTSMAN W33<sup>SV</sup>**

**Id:** NVN25W33      **DOB:** 30/04/2025      **Mating:** AI      **HBR**

*Genetic Conditions: AMFU,CAFU,DDFU,NHFU*

SITZ STELLAR 726D<sup>PV</sup>  
 SITZ RESILIENT 10208<sup>PV</sup>  
 SITZ MISS BURGESS 1856<sup>#</sup>

**Sire:** USA20132505 **CONNELY CRAFTSMAN<sup>PV</sup>**  
 CONNEALY NIOBRARA 5451<sup>#</sup>  
 BLACK CATHY OF CONANGA 8521<sup>#</sup>  
 BLACK CARLA OF CONANGA 450<sup>#</sup>  
 C R A BEXTOR 872 5205 608<sup>#</sup>  
 G A R PROPHET<sup>SV</sup>

**Dam:** NVNM68 **XLBEEF MISS PROFIT M68<sup>PV</sup>**  
 G A R OBJECTIVE 1885<sup>#</sup>  
 THE GRANGE WHEEL WRIGHT D6<sup>PV</sup>  
 CARABAR DIANA J128<sup>SV</sup>  
 CARABAR DIANA D110<sup>SV</sup>



Carabar Dianna J128 - GRANDAM



CONNELY CRAFTSMAN  
 daughter - XL Beef Lee V93

**MID JUNE 2026 TRANSTASMAN ANGUS CATTLE EVALUATION**

TACE	CEDir	CEDtrs	GL	BW	200	400	600	MCW	MBC	MCH	Milk	SS	DC
<b>EBV</b>	-8.1	+3.5	+0.4	+7.1	+59	+101	+115	+98	+0.13	+6.6	+17	+0.6	-6.9
Acc	70%	58%	84%	83%	84%	82%	83%	80%	66%	77%	76%	81%	45%
Perc	98	51	98	97	19	32	64	57	90	78	56	94	15
TACE	CWT	EMA	Rib	P8	RBV	IMF	NFI-F	Doc	Claw	Angle	Leg	INDEXES	
<b>EBV</b>	+60	+10.8	-1.4	-0.8	-0.1	+5.3	+0.81	+10	+0.78	+0.86	+0.78	\$A	\$A-L
Acc	72%	72%	71%	72%	63%	75%	64%	79%	70%	70%	64%	\$248	\$381
Perc	76	13	80	60	74	6	94	87	38	24	4	16	36

Traits Observed: GL,BWT,200WT,Genomics

A stylish thick set Craftsman son that certainly brings the power & Performance in one very tidy package. With the backing of the Dianna J128 female line and the performance of the high selling Connealy Craftsman W33 is a calf with some real breeding potential he also comes with a package of exciting data with a +10.8 EMA & +5.3 IMF he is certainly going to add Carcase quality to his progeny and he is definitely worth a look.

Purchaser:..... \$:.....

**LOT 26**

**Bulls 15 - 19 months**



**XLBEEF H/NETWORK W37<sup>SV</sup>**

**Id:** NVN25W37      **DOB:** 02/05/2025      **Mating:** AI      **HBR**

*Genetic Conditions: AMFU,CAFU,DDFU,NHFU*

**Sire:** USA20488998 **HART NETWORK<sup>PV</sup>**  
 CHERRY CREEK LAND GRANT#  
 CONNEALY CLARITY<sup>PV</sup>  
 BRESHIE OF CONANGA 6988#  
 HOOVER NO DOUBT<sup>PV</sup>  
 HART WHITNEY 9518#  
 HART WHITNEY 3206#  
 LD CAPITALIST 316<sup>PV</sup>  
 MUSGRAVE 316 EXCLUSIVE<sup>PV</sup>  
 MUSGRAVE PRIM LASSIE 163-386#  
**Dam:** NVNR9 **XLBEEF PRUE R9<sup>PV</sup>**  
 MILLAH MURRAH KINGDOM K35<sup>PV</sup>  
 MILLAH MURRAH PRUE M119<sup>PV</sup>  
 MILLAH MURRAH PRUE H4<sup>SV</sup>



Maternal brother sells  
 LOT 10- NVN24V47 (2)



MILLAH MURRAH PRUE M119  
 Grand dam

**MID JUNE 2026 TRANSTASMAN ANGUS CATTLE EVALUATION**

TACE	CEDir	CEDtrs	GL	BW	200	400	600	MCW	MBC	MCH	Milk	SS	DC
EBV	-	-	-	-	-	-	-	-	-	-	-	-	-
Acc	-	-	-	-	-	-	-	-	-	-	-	-	-
Perc	-	-	-	-	-	-	-	-	-	-	-	-	-

TACE	CWT	EMA	Rib	P8	RBV	IMF	NFI-F	Doc	Claw	Angle	Leg	INDEXES	
EBV	-	-	-	-	-	-	-	-	-	-	-	\$A	\$A-L
Acc	-	-	-	-	-	-	-	-	-	-	-	-	-
Perc	-	-	-	-	-	-	-	-	-	-	-	-	-

Traits Observed: None

A moderate, thick, soft easy going calf with plenty of style and presence. Strong Pedigree backing with the Grand dam Milla Murrah M119 being sired by the \$150,000 Milla Murrah Kingdom and put out of Millah Murrah Prue H4 the DAM OF AI sire Milla Murrag Klooney W37 certainly has some power behind him and sired by Network he certainly is a neat package. Balanced data across the board is incredibly impressive. IMF for a calf with his natural thickness.

Purchaser:..... \$:.....

**LOT 27**

**Heifers PTIC**



**XLBEEF PRECIOUS V75<sup>SV</sup>**

**Id:** NVN24V75      **DOB:** 28/08/2024      **Mating:** AI      **HBR**

*Genetic Conditions: AMFU,CAFU,DDFU,NHFU*

CHERRY CREEK LAND GRANT#  
 CONNEALY CLARITY<sup>PV</sup>  
 BRESHIE OF CONANGA 6988#

**Sire: USA20488998 HART NETWORK<sup>PV</sup>**

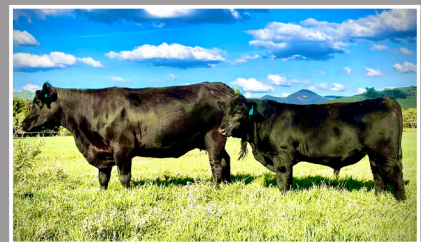
HOOVER NO DOUBT<sup>PV</sup>  
 HART WHITNEY 9518#  
 HART WHITNEY 3206#  
 TE MANIA EMPEROR E343<sup>PV</sup>  
 ASCOT HALLMARK H147<sup>PV</sup>  
 MILLAH MURRAH BRENDA F123<sup>PV</sup>

**Dam: NVNP41 XLBEEF PRECIOUS P41#**

JMB TRACTION 292<sup>PV</sup>  
 XLBEEF TRACTION L90#  
 MURRAY EQUATOR G57<sup>PV</sup>



Grand dam L90



NVNP41- DAM

**MID JUNE 2026 TRANSTASMAN ANGUS CATTLE EVALUATION**

TACE	CEDir	CEDtrs	GL	BW	200	400	600	MCW	MBC	MCH	Milk	SS	DC
<b>EBV</b>	<b>+6.7</b>	<b>-7.6</b>	<b>-3.2</b>	<b>+5.1</b>	<b>+67</b>	<b>+116</b>	<b>+151</b>	<b>+119</b>	<b>+0.20</b>	<b>+6.5</b>	<b>+20</b>	<b>+2.9</b>	<b>-5.5</b>
Acc	69%	57%	84%	83%	84%	82%	82%	79%	66%	77%	75%	80%	43%
Perc	17	99	72	77	5	6	6	26	78	79	31	25	38

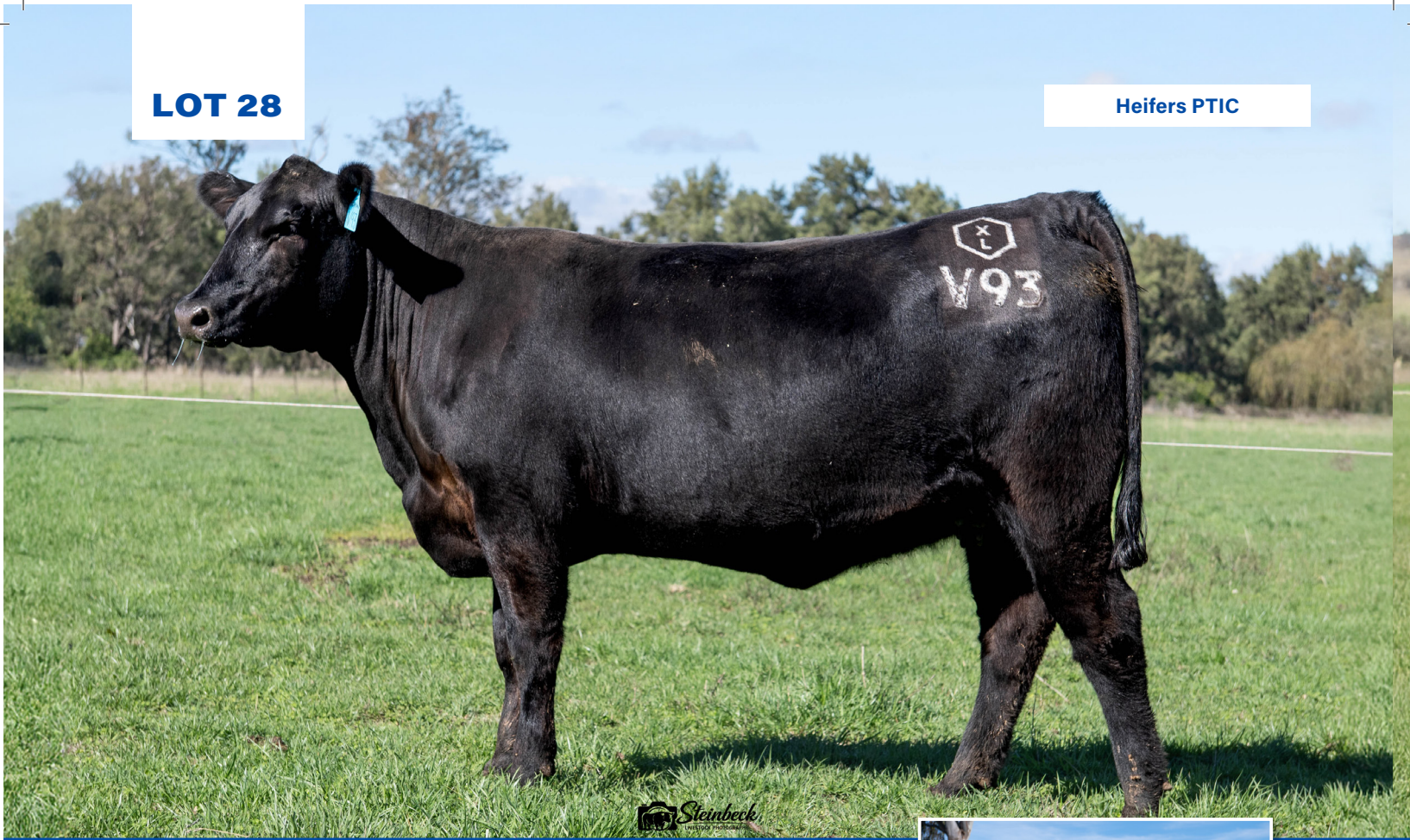
  

TACE	CWT	EMA	Rib	P8	RBV	IMF	NFI-F	Doc	Claw	Angle	Leg	INDEXES	
<b>EBV</b>	<b>+101</b>	<b>+5.2</b>	<b>+0.6</b>	<b>-0.5</b>	<b>+0.3</b>	<b>+1.8</b>	<b>+0.42</b>	<b>+16</b>	<b>+0.70</b>	<b>+0.88</b>	<b>+1.08</b>	<b>\$A</b>	<b>\$A-L</b>
Acc	72%	72%	71%	72%	62%	75%	63%	79%	68%	68%	64%	<b>\$244</b>	<b>\$406</b>
Perc	2	69	36	55	52	68	70	69	23	28	67	20	19

**Traits Observed:** GL,200WT,Genomics

The first of the females and one of our personal favourites to start. V75 a half Network daughter with some real style, power & performance behind her in a very tidy package. This female we think has huge breeding potential, she's long, deep & slick with the look of a real matron in the making. Her performance data is strong across the board with the growth traits being in the top 5%. She sells PTIC she was AI'd to RC LUCCHESI L101 & backed up with Ben Nevis Ventura V477 a natural calf from their star donor Jean S047. V75 would be an asset to any operation - AI due date 25/8/26

Purchaser:..... \$:.....



**XLBEEF LEE V93<sup>SV</sup>**

**Id:** NVN24V93      **DOB:** 28/09/2024      **Mating:** AI      **HBR**

*Genetic Conditions: AMFU,CAFU,DDFU,NHFU*

SITZ STELLAR 726<sup>PV</sup>  
 SITZ RESILIENT 10208<sup>PV</sup>  
 SITZ MISS BURGESS 1856<sup>#</sup>

**Sire: USA20132505 CONNEALY CRAFTSMAN<sup>PV</sup>**  
 CONNEALY NIOBRARA 5451<sup>#</sup>  
 BLACK CATHY OF CONANGA 8521<sup>#</sup>  
 BLACK CARLA OF CONANGA 450<sup>#</sup>  
 TE MANIA BARTEL B219<sup>PV</sup>  
 AYRVALE BARTEL E7<sup>PV</sup>  
 EAGLEHAWK JEDDA B32<sup>SV</sup>

**Dam: NVNL27 XLBEEF LEE L27<sup>#</sup>**  
 S A V BRAVE 8320<sup>#</sup>  
 XLBEEF JACINTA J55<sup>#</sup>  
 ANGURU FRANCHESKA F1<sup>#</sup>



**CRAFTSMAN SON NVN24V7**



**NVN24V93 - CONNEALY CRAFTSMAN daughter**

**MID JUNE 2026 TRANSTASMAN ANGUS CATTLE EVALUATION**

TACE	CEDir	CEDtrs	GL	BW	200	400	600	MCW	MBC	MCH	Milk	SS	DC
<b>EBV</b>	<b>-4.5</b>	<b>+7.8</b>	<b>-1.9</b>	<b>+6.3</b>	<b>+61</b>	<b>+102</b>	<b>+118</b>	<b>+76</b>	<b>+0.16</b>	<b>+5.7</b>	<b>+20</b>	<b>+0.7</b>	<b>-5.8</b>
Acc	69%	58%	83%	83%	84%	82%	83%	79%	67%	78%	75%	80%	44%
Perc	92	9	87	92	15	28	58	85	86	89	35	92	32

TACE	CWT	EMA	Rib	P8	RBV	IMF	NFI-F	Doc	Claw	Angle	Leg	INDEXES	
<b>EBV</b>	<b>+72</b>	<b>+11.4</b>	<b>-0.5</b>	<b>+0.8</b>	<b>+1.0</b>	<b>+2.5</b>	<b>+0.19</b>	<b>+25</b>	<b>+0.90</b>	<b>+0.96</b>	<b>+1.16</b>	<b>\$A</b>	<b>\$A-L</b>
Acc	72%	71%	71%	72%	62%	75%	63%	79%	70%	70%	64%	<b>\$275</b>	<b>\$401</b>
Perc	42	10	62	33	16	50	45	31	63	48	86	4	22

**Traits Observed: GL,200WT,Genomics**

A big strong growthy Craftsman daughter V93 certainly has a lot to offer being both easy on the eye and backed by a high performance pedigree including Bartel & Craftsman there is a lot to like about this heifer and her breeding potential is very exciting. Put that with her great set of performance data and being sold PITC. She was AI bred to RC LUCCHESI L101 & backed up with Ben Nevis Ventura V477. V93 is a very near and tidy prospect with a bright future in a range of operations - AI due date 25/8/26

Purchaser:..... \$:.....

**LOT 29**

**Heifers PTIC**



**XLBEEF LASSIE V95<sup>SV</sup>**

**Id:** NVN24V95      **DOB:** 10/10/2024      **Mating:** Natural      **HBR**

*Genetic Conditions: AMFU,CAFU,DDFU,NHFU*

**Sire: NVN21S14 XLBEEF FIREBALL S14<sup>PV</sup>**  
 G A R SURE FIRE 6404#  
 GB FIREBALL 672<sup>PV</sup>  
 GB ANTICIPATION 432#  
 BALDRIDGE BRONC<sup>SV</sup>  
 XLBEEF PRINCESS P112<sup>PV</sup>  
 CARABAR DIANA J128<sup>SV</sup>  
 TE MANIA EMPEROR E343<sup>PV</sup>  
 ASCOT HALLMARK H147<sup>PV</sup>  
 MILLAH MURRAH BRENDA F123<sup>PV</sup>  
**Dam: NVNP37 XLBEEF LASSIE P37<sup>#</sup>**  
 PLATTEMERE WEIGH UP K360#  
 XLBEEF LASSIE L39#  
 ANGURU GLAZE G44#



**FIREBALL S14 Son sells  
LOT 12 -NVN24V70**



**XL Beef Fireball S14 - Sire**

**MID JUNE 2026 TRANSTASMAN ANGUS CATTLE EVALUATION**

TACE	CEDir	CEDtrs	GL	BW	200	400	600	MCW	MBC	MCH	Milk	SS	DC
<b>EBV</b>	<b>+1.2</b>	<b>+7.9</b>	<b>-7.9</b>	<b>+4.6</b>	<b>+67</b>	<b>+124</b>	<b>+163</b>	<b>+149</b>	<b>+0.30</b>	<b>+8.6</b>	<b>+18</b>	<b>+3.6</b>	<b>-6.4</b>
Acc	67%	58%	82%	81%	83%	81%	81%	79%	70%	80%	75%	79%	44%
Perc	66	9	10	67	5	2	2	5	50	41	47	11	21
TACE	CWT	EMA	Rib	P8	RBV	IMF	NFI-F	Doc	Claw	Angle	Leg	INDEXES	
<b>EBV</b>	<b>+94</b>	<b>+6.9</b>	<b>-0.7</b>	<b>-2.4</b>	<b>-0.1</b>	<b>+3.1</b>	<b>+0.49</b>	<b>+14</b>	<b>+0.90</b>	<b>+0.66</b>	<b>+0.92</b>	<b>\$A</b>	<b>\$A-L</b>
Acc	71%	70%	70%	71%	61%	75%	64%	76%	65%	65%	61%	<b>\$251</b>	<b>\$452</b>
Perc	4	49	66	82	74	36	76	77	63	3	20	14	3

**Traits Observed:** 200WT,Genomics

A super smart female here with a very exciting bright future. V95 certainly ticks all the boxes. She's big, long, growthy and made with an awesome phenotype and a female that really radiates quality with every step, V95 has the data set to match the quality and potential she holds as the upcoming future of any breeding operation. With 11 performance traits in the top 10% of the breed she really does have all bases covered, her future in the Angus breed is exciting to say the least. She sells PITC. AI bred to the 300k Clunie range Untouchable & backed up with Ben Nevis Venture V477 - AI due date 25/8/26

Purchaser:..... \$:.....

**LOT 30**

**Heifers PTIC**



**XLBEEF MILLICENT V67<sup>SV</sup>**

**Id:** NVN24V67      **DOB:** 01/08/2024      **Mating:** Natural      **HBR**

*Genetic Conditions: AMFU,CAFU,DDFU,NHFU*

TEHAMA REVERE#  
S POWERPOINT WS 5503<sup>PV</sup>  
S QUEEN ESSA 248#

**Sire: KNA21S020 3RLS POWERPOINT S020<sup>PV</sup>**  
MILWILLAH GATSBY G279<sup>PV</sup>  
CLUNIE RANGE MAYFLOWER K328<sup>SV</sup>  
CLUNIE RANGE MAYFLOWER G338<sup>PV</sup>  
RENNYLEA EDMUND E11<sup>PV</sup>  
LANDFALL KEYSTONE K132<sup>PV</sup>

**Dam: NVNR46 XLBEEF MILLICENT R46<sup>SV</sup>**  
LANDFALL ARCHER H807<sup>SV</sup>  
BEN NEVIS KINGPIN K58<sup>SV</sup>  
XLBEEF MILLICENT M97#  
ANGURU THUNDERBIRD G20#



3R POWERPOINT S20 Daughter  
sells LOT 32 -NVN24V74



3R POWERPOINT S20 Son sells  
LOT 8 - NVN24V64 (3)

**MID JUNE 2026 TRANSTASMAN ANGUS CATTLE EVALUATION**

TACE	CEDir	CEDtrs	GL	BW	200	400	600	MCW	MBC	MCH	Milk	SS	DC
<b>EBV</b>	<b>+3.3</b>	<b>+5.6</b>	<b>-4.3</b>	<b>+3.2</b>	<b>+52</b>	<b>+96</b>	<b>+122</b>	<b>+129</b>	<b>+0.37</b>	<b>+11.0</b>	<b>+14</b>	<b>+2.0</b>	<b>-8.1</b>
Acc	67%	59%	82%	82%	83%	81%	82%	79%	67%	78%	75%	79%	44%
Perc	48	28	55	36	53	44	50	15	31	9	76	57	5

TACE	CWT	EMA	Rib	P8	RBV	IMF	NFI-F	Doc	Claw	Angle	Leg	INDEXES	
<b>EBV</b>	<b>+80</b>	<b>+0.5</b>	<b>+3.2</b>	<b>+2.3</b>	<b>-0.9</b>	<b>+4.2</b>	<b>+0.85</b>	<b>+20</b>	<b>+1.12</b>	<b>+0.94</b>	<b>+1.12</b>	<b>\$A</b>	<b>\$A-L</b>
Acc	70%	70%	69%	70%	60%	74%	63%	76%	63%	63%	60%	<b>\$220</b>	<b>\$404</b>
Perc	21	97	5	14	96	17	95	52	93	43	77	44	20

**Traits Observed: 200WT,Genomics**

Another smooth, long, growthy powerful female here that will certainly fill out to a massive cow when she is finished. She combines an attractive phenotype. With a strong set of performance figures, making her a versatile breeding prospect for any herd. With her extra growth, structural correctness and feminine appeal V67 is the type of female that catches your eye as soon as you see her. She is certainly a well balanced package. She sells PITC AI bred to Pine View Vezina back up with Ben Nevis Ventura V477. - AI due date 25/8/26

Purchaser:..... \$:.....



**XLBEEF JAZZY V77<sup>SV</sup>**

**Id:** NVN24V77      **DOB:** 29/08/2024      **Mating:** AI      **HBR**

*Genetic Conditions: AMFU,CAFU,DDFU,NHFU*

BASIN PAYWEIGHT 1682<sup>PV</sup>  
 DEER VALLEY GROWTH FUND#  
 DEER VALLEY RITA 36113#

**Sire: USA19411210 EXAR STOCK FUND 9097B<sup>PV</sup>**

G A R PROPHET K243#  
 EXAR EMPRESS 0875#  
 EXAR EMPRESS 2622#

MYTTY IN FOCUS#  
 A A R TEN X 7008 S A<sup>SV</sup>  
 A A R LADY KELTON 5551#

**Dam: NVNJ73 XLBEEF JAZZY J73#**

L T 598 BANDO 9074#  
 KENNY'S CREEK PRINCESS E320<sup>SV</sup>  
 KENNY'S CREEK B225#



Lot 6 NVN23U82



Sire - Stock Fund

**MID JUNE 2026 TRANSTASMAN ANGUS CATTLE EVALUATION**

TACE	CEDir	CEDtrs	GL	BW	200	400	600	MCW	MBC	MCH	Milk	SS	DC
<b>EBV</b>	<b>+6.2</b>	<b>+5.0</b>	<b>-3.5</b>	<b>+1.1</b>	<b>+49</b>	<b>+94</b>	<b>+113</b>	<b>+101</b>	<b>+0.16</b>	<b>+6.2</b>	<b>+19</b>	<b>+2.4</b>	<b>-4.1</b>
Acc	67%	58%	83%	82%	83%	82%	82%	80%	70%	81%	76%	80%	45%
Perc	21	34	68	8	64	52	68	52	86	83	43	41	70
TACE	CWT	EMA	Rib	P8	RBV	IMF	NFI-F	Doc	Claw	Angle	Leg	INDEXES	
<b>EBV</b>	<b>+62</b>	<b>+7.6</b>	<b>+1.0</b>	<b>+0.5</b>	<b>-0.1</b>	<b>+1.8</b>	<b>-0.15</b>	<b>+25</b>	<b>+1.10</b>	<b>+0.88</b>	<b>+0.96</b>	<b>\$A</b>	<b>\$A-L</b>
Acc	72%	71%	71%	71%	63%	75%	62%	75%	70%	70%	63%	<b>\$188</b>	<b>\$343</b>
Perc	69	40	28	38	74	68	14	32	92	28	30	77	67

**Traits Observed:** GL,200WT,Genomics

If you're chasing extra volume, thickness and natural power, V77 deserves a close look. A big bodied female with plenty of depth and capacity, she combines muscle, performance and femininity in a very attractive package. She certainly has the volume and substance to produce easy doing cattle. With the maternal presence to make an impact. Sell's PTIC AI bred to the 300k Clunie Range Untouchable backed up with Ben Nevis Ventura V477. A great prospect here with some real breeding potential. - AI due date 25/8/26

Purchaser:..... \$:.....

**LOT 32**

**Heifers PTIC**



**XLBEEF LADY V74<sup>SV</sup>**

**Id:** NVN24V74      **DOB:** 29/08/2024      **Mating:** Natural      **HBR**

*Genetic Conditions: AMFU,CAFU,DDFU,NHFU*

TEHAMA REVERE<sup>#</sup>  
S POWERPOINT WS 5503<sup>PV</sup>  
S QUEEN ESSA 248<sup>#</sup>

**Sire: KNA21S020 3RLS POWERPOINT S020<sup>PV</sup>**  
MILWILLAH GATSBY G279<sup>PV</sup>  
CLUNIE RANGE MAYFLOWER K328<sup>SV</sup>  
CLUNIE RANGE MAYFLOWER G338<sup>PV</sup>  
WMR TIMELESS 458<sup>#</sup>  
XLBEEF TIMELESS J9<sup>SV</sup>

**Dam: NVNL95 XLBEEF LADY L95<sup>#</sup>**  
KENNY'S CREEK FEDERATION F352<sup>PV</sup>  
ALBERDA TRAVELER 416<sup>#</sup>  
ANGURU MISS BUNDABURG V11<sup>#</sup>  
CALLEEN E-CLUSIVE P47+94<sup>#</sup>



**3R POWERPOINT S20**  
Daughter NVN23U75



**3R POWERPOINT S20 Son**  
NVN23U95 (2)

**MID JUNE 2026 TRANSTASMAN ANGUS CATTLE EVALUATION**

TACE	CEDir	CEDtrs	GL	BW	200	400	600	MCW	MBC	MCH	Milk	SS	DC
<b>EBV</b>	<b>+4.1</b>	<b>+5.1</b>	<b>-6.9</b>	<b>+2.4</b>	<b>+45</b>	<b>+86</b>	<b>+113</b>	<b>+103</b>	<b>+0.25</b>	<b>+8.3</b>	<b>+9</b>	<b>-0.1</b>	<b>-5.8</b>
Acc	64%	56%	82%	82%	83%	80%	81%	78%	64%	75%	74%	78%	40%
Perc	40	33	18	22	82	73	68	49	65	48	96	99	32
TACE	CWT	EMA	Rib	P8	RBV	IMF	NFI-F	Doc	Claw	Angle	Leg	INDEXES	
<b>EBV</b>	<b>+60</b>	<b>-0.4</b>	<b>+3.4</b>	<b>+6.1</b>	<b>-1.6</b>	<b>+3.2</b>	<b>+0.78</b>	<b>-2</b>	<b>+1.04</b>	<b>+0.80</b>	<b>+1.02</b>	<b>\$A</b>	<b>\$A-L</b>
Acc	69%	68%	67%	69%	58%	73%	60%	75%	63%	63%	59%	<b>\$189</b>	<b>\$345</b>
Perc	76	99	4	1	99	34	93	99	86	14	49	75	65

**Traits Observed:** 200WT,Genomics

V74 is a big strong female that combines an impressive phenotype with balanced performance data across the board. She offers plenty of capacity, structural strength and overall quality making her an extremely exciting breeding prospect. Backing up her powerful appearance is a solid set of carcass traits, providing the added value and market flexibility that today's producers are looking for. She certainly brings performance, functionality & profitability in one complete package. Sells PITC AI bred to Clunie Range Untouchable and backed up with Ben Nevis Ventura V477.- AI due date 25/8/26

Purchaser:..... \$:.....

**LOT 33**

**Heifers PTIC**



**XLBEEF MILDRED V69<sup>SV</sup>**

**Id:** NVN24V69      **DOB:** 08/08/2024      **Mating:** Natural      **APR**

*Genetic Conditions: AMFU,CAFU,DDFU,NHFU*

TEHAMA REVERE<sup>#</sup>  
S POWERPOINT WS 5503<sup>PV</sup>  
S QUEEN ESSA 248<sup>#</sup>  
**Sire: KNA21S020 3RLS POWERPOINT S020<sup>PV</sup>**  
MILWILLAH GATSBY G279<sup>PV</sup>  
CLUNIE RANGE MAYFLOWER K328<sup>SV</sup>  
CLUNIE RANGE MAYFLOWER G338<sup>PV</sup>  
EF COMMANDO 1366<sup>PV</sup>  
BALDRIDGE BRONC<sup>SV</sup>  
BALDRIDGE ISABEL Y69<sup>#</sup>

**Dam: NVNP42 XLBEEF MILDRED P42<sup>#</sup>**

UNKNOWN



3R POWERPOINT S20 Son sells  
LOT 8 - NVN24V64 (3)



NVNP42 - DAM

**MID JUNE 2026 TRANSTASMAN ANGUS CATTLE EVALUATION**

TACE	CEDir	CEDtrs	GL	BW	200	400	600	MCW	MBC	MCH	Milk	SS	DC
<b>EBV</b>	<b>+3.4</b>	<b>+6.1</b>	<b>-3.3</b>	<b>+2.1</b>	<b>+56</b>	<b>+103</b>	<b>+127</b>	<b>+111</b>	<b>+0.28</b>	<b>+6.8</b>	<b>+14</b>	<b>+1.5</b>	<b>-5.4</b>
Acc	67%	58%	83%	82%	83%	81%	82%	79%	65%	77%	76%	79%	41%
Perc	47	22	71	17	30	25	38	36	56	75	73	74	40

TACE	CWT	EMA	Rib	P8	RBV	IMF	NFI-F	Doc	Claw	Angle	Leg	INDEXES	
<b>EBV</b>	<b>+81</b>	<b>+5.9</b>	<b>+1.5</b>	<b>+0.5</b>	<b>+0.0</b>	<b>+2.2</b>	<b>-0.07</b>	<b>+11</b>	<b>+1.20</b>	<b>+0.86</b>	<b>+0.88</b>	<b>\$A</b>	<b>\$A-L</b>
Acc	70%	69%	68%	70%	59%	74%	61%	76%	61%	61%	56%	<b>\$225</b>	<b>\$392</b>
Perc	20	60	20	38	69	58	20	86	97	24	13	37	28

Traits Observed: 200WT,Genomics

V69 is a powerful female that combines exceptional depth, volume & thickness with a soft easy doing phenotype. She is the kind of female that carries natural capacity and brood cow presence while maintaining the balance & femininity that make great breeding females. V69 has all the ingredients to become a productive & profitable cow for years to come. Sells PTIC AI bred to Clunie Range Untouchable & backed up with Ben Nevis Ventura V477. - AI due date 25/8/26

Purchaser:..... \$:.....

**LOT 34**

**Heifers PTIC**



**XLBEEF MISS TENX V87<sup>SV</sup>**

**Id:** NVN24V87      **DOB:** 25/09/2024      **Mating:** AI      **HBR**

*Genetic Conditions: AMFU,CAFU,DDFU,NHFU*

SITZ STELLAR 726D<sup>PV</sup>  
 SITZ RESILIENT 10208<sup>PV</sup>  
 SITZ MISS BURGESS 1856<sup>#</sup>

**Sire: USA20132505 CONNEALY CRAFTSMAN<sup>PV</sup>**  
 CONNEALY NIOBRARA 5451<sup>#</sup>  
 BLACK CATHY OF CONANGA 8521<sup>#</sup>  
 BLACK CARLA OF CONANGA 450<sup>#</sup>  
 MYTTY IN FOCUS<sup>#</sup>  
 A A R TEN X 7008 S A<sup>SV</sup>  
 A A R LADY KELTON 5551<sup>#</sup>

**Dam: NVNM66 XLBEEF MISS TEN X M66<sup>PV</sup>**  
 TC ABERDEEN 759<sup>SV</sup>  
 ABERDEEN ESTATE PRINCESS J9<sup>PV</sup>  
 ARDROSSAN PRINCESS W38<sup>PV</sup>



**MATERNAL BROTHER Sells**  
**LOT 7 - NVN25W1**



**XL Beef Miss Tanker U99 -**  
**Maternal sister**

**MID JUNE 2026 TRANSTASMAN ANGUS CATTLE EVALUATION**

TACE	CEDir	CEDtrs	GL	BW	200	400	600	MCW	MBC	MCH	Milk	SS	DC
<b>EBV</b>	<b>+3.2</b>	<b>+3.4</b>	<b>-4.9</b>	<b>+2.6</b>	<b>+51</b>	<b>+94</b>	<b>+122</b>	<b>+69</b>	<b>+0.11</b>	<b>+5.7</b>	<b>+19</b>	<b>+1.0</b>	<b>-5.9</b>
Acc	70%	59%	84%	83%	84%	83%	83%	80%	67%	78%	76%	81%	45%
Perc	49	53	46	25	55	50	48	91	92	89	36	87	30

TACE	CWT	EMA	Rib	P8	RBV	IMF	NFI-F	Doc	Claw	Angle	Leg	INDEXES	
<b>EBV</b>	<b>+74</b>	<b>+10.8</b>	<b>-1.0</b>	<b>-2.0</b>	<b>+0.3</b>	<b>+4.7</b>	<b>+0.81</b>	<b>+13</b>	<b>+0.96</b>	<b>+0.98</b>	<b>+0.84</b>	<b>\$A</b>	<b>\$A-L</b>
Acc	72%	72%	71%	72%	63%	76%	64%	79%	70%	70%	64%	<b>\$264</b>	<b>\$397</b>
Perc	37	13	72	78	52	11	94	78	74	53	8	7	24

**Traits Observed:** GL,200WT,Genomics

V87 is an exciting young female backed by a proven & powerful pedigree that includes the outstanding female ARDROSSAN PRINCESS W38, a cow that has left a significant mark within our breed. Combining elite genetics with outstanding performance data, V87 offers exceptional breeding potential for the future. Her figures are highlighted by a strong IMF adding valuable carcass quality to an already impressive package. With all that V87 represents she is a valuable opportunity to invest in proven maternal genetics with a bright future. Sells PTIC, AI bred to Clunie Range Untouchable backed up with Ben Nevis Ventura V477 - AI due date 25/8/26

**Purchaser:**..... **\$:**.....

**LOT 35**

**Heifers PTIC**



**XLBEEF PRUE V94<sup>SV</sup>**

**Id:** NVN24V94      **DOB:** 01/10/2024      **Mating:** AI      **HBR**

*Genetic Conditions: AMFU,CAFU,DDFU,NHFU*

SITZ STELLAR 726D<sup>PV</sup>  
 SITZ RESILIENT 10208<sup>PV</sup>  
 SITZ MISS BURGESS 1856<sup>#</sup>

**Sire: USA20132505 CONNEALY CRAFTSMAN<sup>PV</sup>**  
 CONNEALY NIOBRARA 5451<sup>#</sup>  
 BLACK CATHY OF CONANGA 8521<sup>#</sup>  
 BLACK CARLA OF CONANGA 450<sup>#</sup>  
 HINGAIA 469<sup>#</sup>  
 MILLAH MURRAH KINGDOM K35<sup>PV</sup>

**Dam: NMMM119 MILLAH MURRAH PRUE M119<sup>PV</sup>**  
 TE MANIA EMPEROR E343<sup>PV</sup>  
 MILLAH MURRAH PRUE H4<sup>SV</sup>  
 MILLAH MURRAH PRUE F12<sup>PV</sup>



**DAM-MILLAH MURRAH PRUE M119**



**Maternal Sister NVN24V2**

**MID JUNE 2026 TRANSTASMAN ANGUS CATTLE EVALUATION**

TACE	CEDir	CEDtrs	GL	BW	200	400	600	MCW	MBC	MCH	Milk	SS	DC
<b>EBV</b>	-11.6	+2.7	-1.3	+6.2	+57	+92	+118	+85	+0.35	+7.0	+20	+0.7	-6.6
Acc	69%	57%	83%	83%	84%	82%	82%	79%	66%	77%	75%	80%	43%
Perc	99	60	91	91	30	56	58	76	36	73	31	92	19
TACE	CWT	EMA	Rib	P8	RBV	IMF	NFI-F	Doc	Claw	Angle	Leg	INDEXES	
<b>EBV</b>	+70	+12.5	+0.8	+1.9	+0.3	+3.9	+0.12	+16	+0.84	+0.94	+1.04	\$A	\$A-L
Acc	71%	71%	70%	71%	62%	75%	63%	79%	71%	71%	66%	\$243	\$353
Perc	48	6	32	18	52	21	37	70	51	43	55	20	60

**Traits Observed:** GL,200WT,Genomics

V94 is a female with an exceptional pedigree and the performance data to match. She traces back to the renowned Millah Murrah Prue H4 the influential dam of widely used AI sire Millah Murrah Klooney. Backing up her pedigree is a strong set of performance figures across the board, making V95 an exciting breeding prospect with tremendous future potential combining maternal strength with powerful genetics and balanced data. She offers a nice package with some real breeding appeal and is definitely one to watch. Sells PTIC AI bred to Pine View Vezina backed by Ben Nevis Ventura V477 - AI due date 25/8/26

**Purchaser:**..... **\$:**.....

**LOT 36**

**Heifers PTIC**



XL BEef Millicent T70 - Maternal Sister

**XLBEEF MILLICENT V91<sup>SV</sup>**

**Id:** NVN24V91      **DOB:** 27/09/2024      **Mating:** AI      **HBR**

*Genetic Conditions:* AMFU,CAFU,DDFU,NHFU

SITZ STELLAR 726D<sup>PV</sup>  
 SITZ RESILIENT 10208<sup>PV</sup>  
 SITZ MISS BURGESS 1856<sup>#</sup>  
**Sire: USA20132505 CONNEALY CRAFTSMAN<sup>PV</sup>**  
 CONNEALY NIOBRARA 5451<sup>#</sup>  
 BLACK CATHY OF CONANGA 8521<sup>#</sup>  
 BLACK CARLA OF CONANGA 450<sup>#</sup>  
 AYRVALE BARTEL E7<sup>PV</sup>  
 BEN NEVIS KINGPIN K58<sup>SV</sup>  
 BEN NEVIS GERANIUM H28<sup>#</sup>

**Dam: NVNM97 XLBEEF MILLICENT M97<sup>#</sup>**  
 S A V THUNDERBIRD 9061<sup>SV</sup>  
 ANGURU THUNDERBIRD G20<sup>#</sup>  
 ANGURU MISS BUNDABURG V11<sup>#</sup>

**MID JUNE 2026 TRANSTASMAN ANGUS CATTLE EVALUATION**

TACE	CEDir	CEDtrs	GL	BW	200	400	600	MCW	MBC	MCH	Milk	SS	DC
<b>EBV</b>	<b>-1.8</b>	<b>+6.8</b>	<b>-4.2</b>	<b>+4.9</b>	<b>+52</b>	<b>+88</b>	<b>+105</b>	<b>+72</b>	<b>+0.23</b>	<b>+6.5</b>	<b>+15</b>	<b>-0.1</b>	<b>-4.5</b>
Acc	68%	56%	83%	83%	84%	82%	82%	79%	64%	76%	74%	80%	41%
Perc	84	16	57	73	50	69	82	89	71	79	69	99	61
TACE	CWT	EMA	Rib	P8	RBV	IMF	NFI-F	Doc	Claw	Angle	Leg	INDEXES	
<b>EBV</b>	<b>+63</b>	<b>+9.8</b>	<b>+2.5</b>	<b>+2.8</b>	<b>+0.4</b>	<b>+2.4</b>	<b>+0.12</b>	<b>+16</b>	<b>+1.12</b>	<b>+1.04</b>	<b>+1.18</b>	<b>\$A</b>	<b>\$A-L</b>
Acc	71%	70%	70%	71%	61%	74%	62%	78%	69%	69%	63%	<b>\$234</b>	<b>\$353</b>
Perc	68	20	9	10	46	53	37	69	93	67	89	29	60

**Traits Observed:** GL,200WT,Genomics

V91 is a smooth made long bodied female that combines style, softness and functionality in a very complete package. She carries plenty of length and extension while maintaining the depth and femininity that are so important in a productive breeding female. Backing her up is a balanced set of figures with very solid carcass traits. V91 is the kind of female that brings together maternal strength, carcass quality and overall balance. Sell PTIC AI bred to Clunie Range Untouchable and is backed by Ben Nevis Ventura V477. - AI due date 25/8/26

Purchaser:..... \$:.....



MYERS FAIR-N SQUARE Son sells  
LOT 17 - NVN24V84

**XLBEEF GINGER V85<sup>SV</sup>**

**Id:** NVN24V85      **DOB:** 23/09/2024      **Mating:** AI      **HBR**

*Genetic Conditions: AMF,CAFU,DDF,NHFU*

CONNEALY CONFIDENCE PLUS<sup>#</sup>  
WOODHILL BLUEPRINT<sup>PV</sup>  
WOODHILL EVERGREEN Z291-B233<sup>#</sup>

**Sire:** USA19418329 MYERS FAIR-N-SQUARE M39<sup>PV</sup>

CONNEALY THUNDER<sup>#</sup>  
MYERS MISS BEAUTY M136<sup>#</sup>  
MYERS MISS BEAUTY M476<sup>#</sup>

A A R TEN X 7008 S A<sup>SV</sup>  
V A R DISCOVERY 2240<sup>PV</sup>  
DEER VALLEY RITA 0308<sup>#</sup>

**Dam:** NVNN97 XLBEEF GINGER N97<sup>#</sup>

B T ULTRAVOX 297E<sup>#</sup>  
ANGURU GINGER G55<sup>#</sup>  
ANGURU 2V1 A5<sup>#</sup>

**MID JUNE 2026 TRANSTASMAN ANGUS CATTLE EVALUATION**

TACE	CEDir	CEDtrs	GL	BW	200	400	600	MCW	MBC	MCH	Milk	SS	DC
<b>EBV</b>	-0.3	-6.9	-4.9	+4.4	+56	+105	+127	+98	+0.36	+6.5	+16	+2.9	-7.8
Acc	68%	59%	83%	83%	84%	82%	82%	80%	66%	77%	76%	80%	44%
Perc	76	99	46	63	33	21	37	57	33	80	61	25	7

TACE	CWT	EMA	Rib	P8	RBV	IMF	NFI-F	Doc	Claw	Angle	Leg	INDEXES	
<b>EBV</b>	+72	+3.3	+0.2	+1.6	-0.6	+1.9	+0.54	+5	+0.94	+1.02	+0.98	\$A	\$A-L
Acc	71%	71%	70%	71%	62%	75%	62%	78%	71%	70%	65%	\$222	\$369
Perc	41	86	45	22	91	65	80	95	71	63	36	42	46

**Traits Observed:** GL,200WT,Genomics

V85 is the kind of female we really appreciate. She's easy fleshing, softmade and packed with natural thickness. She combines depth of body and capacity with a strong functional phenotype. Her balanced performance data complements her practical attributes, making her an attractive breeding prospect with plenty of versatility and long term values. V85 is a female that offers substance, efficiency & maternal strength in a once complete package. Sells PTIC AI bred to RC Lucchese L101 backed up with Ben Nevis Ventura V447. - AI due date 25/8/26

Purchaser:..... \$:.....



**XLBEEF GOLDIE V89<sup>SV</sup>**

**Id:** NVN24V89      **DOB:** 26/09/2024      **Mating:** AI      **HBR**

*Genetic Conditions: AMFU,CAFU,DDFU,NHFU*

S S NIAGARA Z29<sup>SV</sup>  
 TEHAMA PATRIARCH F028<sup>PV</sup>  
 TEHAMA ELITE BLACKBIRD D826<sup>#</sup>

**Sire: USA20019500 TEHAMA TESTAMENT<sup>SV</sup>**

SITZ WISDOM 481T<sup>#</sup>  
 TEHAMA MARY BLACKBIRD E789<sup>#</sup>  
 TEHAMA MARY BLACKBIRD Y677<sup>#</sup>  
 SILVEIRAS CONVERSION 8064<sup>#</sup>  
 MILLAH MURRAH CONVERSION L132<sup>PV</sup>  
 MILLAH MURRAH FLOWER H46<sup>SV</sup>

**Dam: NVNP139 XLBEEF GOLDIE P139<sup>#</sup>**

SITZ NEW DESIGN 458N<sup>#</sup>  
 ANGURU GOLDIE G43<sup>#</sup>  
 ANGURU BRIGETT B3<sup>#</sup>



**TESTAMENT Son sells**  
**LOT 22 - NVN25W32**



**XL Beef Goldie U105 -**  
**Maternal Sister**

**MID JUNE 2026 TRANSTASMAN ANGUS CATTLE EVALUATION**

TACE	CEDir	CEDtrs	GL	BW	200	400	600	MCW	MBC	MCH	Milk	SS	DC
<b>EBV</b>	<b>+2.5</b>	<b>-1.2</b>	<b>-5.2</b>	<b>+3.7</b>	<b>+53</b>	<b>+97</b>	<b>+113</b>	<b>+93</b>	<b>+0.37</b>	<b>+9.2</b>	<b>+19</b>	<b>+2.8</b>	<b>-3.1</b>
Acc	69%	57%	83%	83%	84%	82%	82%	80%	67%	79%	76%	80%	42%
Perc	55	88	41	48	48	43	67	64	31	30	38	28	87
TACE	CWT	EMA	Rib	P8	RBV	IMF	NFI-F	Doc	Claw	Angle	Leg	INDEXES	
<b>EBV</b>	<b>+66</b>	<b>+10.2</b>	<b>-0.7</b>	<b>+0.1</b>	<b>+0.5</b>	<b>+1.6</b>	<b>+0.68</b>	<b>+3</b>	<b>+1.04</b>	<b>+0.94</b>	<b>+1.04</b>	<b>\$A</b>	<b>\$A-L</b>
Acc	71%	71%	70%	71%	61%	75%	61%	78%	68%	68%	65%	<b>\$198</b>	<b>\$332</b>
Perc	59	17	66	44	40	72	89	97	86	43	55	68	74

**Traits Observed:** GL,200WT,Genomics

V89 is a moderate framed female that combines softness/ balance and femininity in a very attractive package. Smoothly made and neatly structured, she carries herself with style maintaining the functionality and efficiency that are so important in productive breeding females. Backed by a quality pedigree V89 offers tremendous breeding potential. Her moderate frame, easy doing nature and overall balance makes her a female with broad appeal. Sells PTIC AI bred to Clunie Range Untouchable and backed up to Ben Nevis Ventura V477. AI due date 25/6/28

Purchaser:..... \$:.....

# ANGUS HeiferSELECT

**AN ADVANCED GENOMIC TOOL  
TO INFORM THE SELECTION OF  
REPLACEMENT HEIFERS FOR  
COMMERCIAL AUSTRALIAN  
ANGUS BREEDERS**



A product of Angus Australia, developed with CSIRO and delivered in collaboration with Zoetis and Neogen.



Scan for more information.

This was created as a result of a collaboration between Angus Australia and Meat & Livestock Australia Donor Company (MDC) (Project P.PSH.1063).





## Thankyou

On behalf of the Geoff & myself, we would like to extend our gratitude and thanks to Nathan for his dedication in the preparation of the cattle and putting the catalogue together, with Minka doing the photos & videos and Alex and his wife upgrading and preparing the sale area for sale day it is a real family affair. We also appreciate Pivot Design in bringing their ideas together.  
Thanks again kids.



## BUYERS INFORMATION

Please complete and hand to the selling agent prior to leaving the sale. No verbal instructions will be accepted.

Contact Name .....

Trading Name .....

Postal Address .....

Phone .....

PIC Number 

--	--	--	--	--	--	--	--

Angus Australia Transfer Required  Yes  No

My Agent .....

Lots Purchased ..... Email .....

Herd Ident .....

Trucking Advice .....

Buyer Signature .....

*Minka Louise*







*Steinbeck*  
LIVESTOCK PHOTOGRAPHY



**Premium Livestock  
Photography  
capturing quality  
stock with images  
that stand out.**



**Helping breeders,  
studs and producers  
market with  
confidence.**



**Contact Minka Steinbeck 0422270414**

# XL BEEF

— Est. 1995 —

**Bull & Female Sale, 5th August 2026, 1pm**  
34 Back Woolomin Rd, Dungowan, NSW

