



# Company Profile

- **Concreting Services**
- **Concrete Pumping**
- **Tilt panels**
- **Transportation**
- **Flat Floors**
- **Design Consulting**

**GET IN TOUCH TODAY**

 **0410 276 928**  **admin@masscga.com.au**  **massconstructiongroup.com.au**



# WELCOME

## Mass Construction Group Australia

### Welcome to Mass Construction Group Australia Pty Ltd

At **Mass Construction Group Australia**, we pride ourselves on being more than just a concreting company, we're a trusted project partner. With decades of industry experience and a commitment to quality, we deliver tailored, reliable, and cost-effective solutions across the **industrial and commercial concreting sectors**.

**Our team** is driven by a hands-on approach, ensuring every project is completed with precision, safety, and integrity from the ground up. Whether it's a complex slab pour, custom tilt panel install, or seamless site logistics, we're here to deliver concrete results, every time.





# VISION



To become Queensland's leading concreting company — setting the standard for quality, reliability, and innovation, with a core focus on industrial warehouse construction. We're committed to expanding throughout regional Queensland, Brisbane, and across Australia over the next five years, delivering durable, efficient, and high-performing concrete solutions that add lasting value to our clients and the communities we serve.

# MISSION



At Mass Construction Group Australia, our mission is to deliver high-performance concreting solutions tailored to the unique demands of industrial warehouse and commercial construction. We combine decades of experience with cutting-edge equipment and a passionate, mobile team ready to travel across regional areas and beyond. Our goal is to consistently exceed expectations, build lasting partnerships, and support the success of large-scale projects throughout Queensland.



# VALUE STATEMENT

## Our Core Values

At Mass Construction Group Australia, our values guide how we **operate**, **deliver**, and **grow** — both as a business and as a team.

## Quality

- We take pride in delivering concreting solutions that meet the highest standards of workmanship, durability, and finish. From large-scale industrial slabs to complex site pours, we never compromise on quality.

## Integrity

- We operate with honesty, transparency, and respect. We honour our word, communicate clearly, and act with accountability in every project, no matter the size.

## Innovation

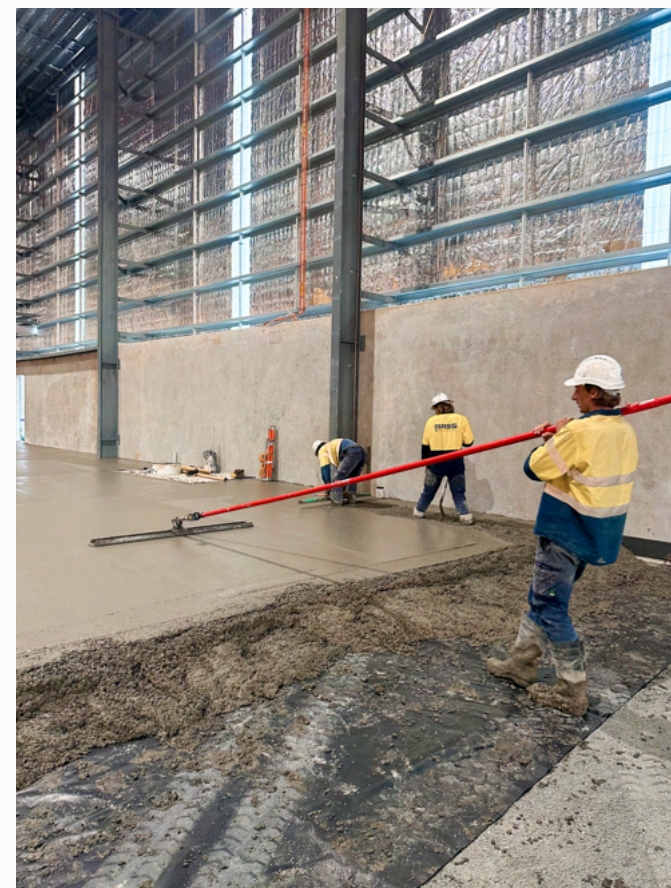
- We stay ahead by embracing industry-leading technology, techniques, and equipment. Innovation drives our efficiency and precision, helping us set the standard in the concreting sector.

## Customer Commitment

- We build lasting partnerships by listening, understanding, and delivering tailored outcomes. Our team goes the extra mile to ensure every client's expectations are not just met — but exceeded.

## Sustainability

- We are committed to reducing our environmental impact by minimising waste, recycling where possible, and adopting responsible site practices that promote long-term sustainability.





# SERVICES



## CONCRETING SERVICES

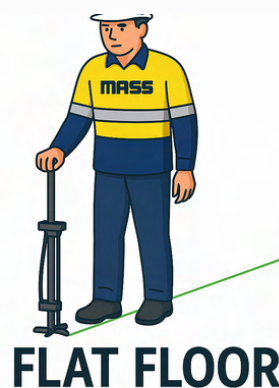
## CONCRETE PUMPING

## DESIGN CONSULTING

## FLAT FLOORS

## TILT PANELS INSTALLATION

## TRANSPORT



## DESIGN



# SERVICE STANDARDS

At **MASS**, clear communication and quality workmanship are at the core of everything we do. We align your vision with our expertise to deliver outcomes you can count on.

Our 5-Point Service Process:

1. **Consultation** – We clarify your goals and project requirements.
2. **Planning** – A tailored plan is developed by your dedicated Site Supervisor.
3. **Execution** – Our team delivers safely, efficiently, and to spec.
4. **Walkthrough** – We review the completed work with you to ensure satisfaction.
5. **Follow-Up** – We check in post-completion for any final support or feedback.

We also provide expert advice to ensure you're getting the best design and value for your concreting needs.

At **MASS**, we build **strong, long-term** relationships through trust, professionalism, and results.

# OUR FLEET

At Mass Construction Group Australia, we operate a specialised fleet designed to deliver **precision**, **efficiency**, and **reliability** across all our projects.

Our in-house plant ensures full control over delivery timelines and quality outcomes.

## Our equipment includes:

### **Ligchine Screedsaver Ultra Plus**

- High-performance laser screed ideal for large pours and tight tolerances.

### **Somero SRS4 Laser-Guided Screed**

- For rapid and accurate concrete levelling with superior flatness.

### **Zoomlion K40 Concrete Boom Pump**

- Trusted reach and volume for efficient concrete placement.

### **Husqvarna & Allen Ride-On Trowels Machines**

- Smooth and durable finishes for every slab.

### **Dipstick Floor Profiler**

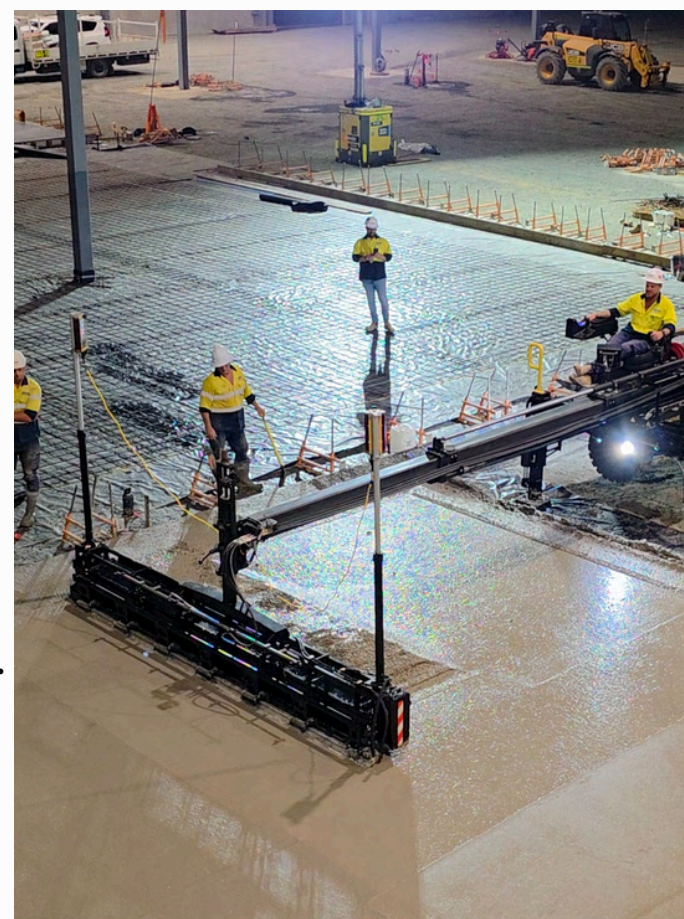
- For testing and verifying floor flatness and levelness to spec.

### **Kenworth K200 Prime Mover + 45FT Low Deck**

- Heavy-duty transport of machinery, containers, and plant.

### **Hino Flatbed Crane Truck**

- Multi-use lifting and material handling on-site.





# RECENT PROJECTS

## **Project: Hastings Deering Warehouse**

**Client:** Ahrens

**Location:** Paget, Mackay

**Year:** 2024–2025

Delivered 16,000m<sup>2</sup> of internal super flat floors and 12,000m<sup>2</sup> of external hardstands ranging from 220mm to 360mm thick. Works included suspended deck slabs, tilt panels, and polished warehouse floors. Internal floors and external hardstands were completed using laser screeds to achieve floor flatness levels that surpassed specification.

[Madewell x MASS – Mackay Case Study](#)



## **Project: Nissan Caryard Hardstand**

**Client:** North Jacklin Nissan

**Location:** Mackay City

**Year:** 2025

2,500m<sup>2</sup> of hardstand completed over two pours using our 3D Somero Laser Screed to create accurate falls to grated drainage. All civil and concrete works were completed within 10 days, minimising disruption to the operational business.

Project: Centurion Distribution Centre



## **Project: Swift Storage**

**Client:** Cloustruct

**Location:** Bakers Creek, Mackay

**Year:** 2024–2025

9,000m<sup>2</sup> of storage facility slab and driveways constructed, along with over 50 tilt panels poured and installed by Mass Construction Group. Panel beds were completed using our Somero Laser Screed for precision and flatness.



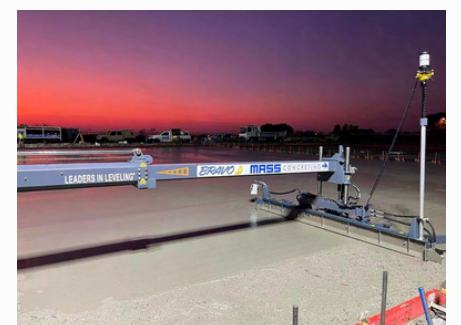
## **Project: Centurion Transport**

**Client:** Fergus Builders

**Location:** Paget, Mackay

**Year:** 2023–2024

25,000m<sup>2</sup> of hardstand and carpark areas constructed with integrated kerbs. Hardstand depths ranged from 120mm to 250mm. Project was completed ahead of programme with all deliverables met.



# OUR TEAM PROJECT RESOURCES

## **Todd Massey – Director**

Todd brings over 20 years of concreting experience and leads the operational delivery of all projects. As a licensed laser screed operator, he ensures every job is completed safely, efficiently, and to the highest standard. His leadership and technical expertise drive the success of Mass Construction Group's site performance.



## **Leslie Crocker – Construction Manager**

Leslie holds a Construction Management degree from QUT and has more than two decades of industry experience. He oversees project planning, safety compliance, and QA processes, ensuring that each project runs smoothly and meets all contractual and regulatory requirements.



## **Craig Leembruggen – Site Supervisor**

With over 10 years working alongside Todd, Craig leads site crews with a strong focus on quality and efficiency. He plays a key role in coordinating day-to-day site activities and maintaining high construction standards across all stages of the project.



## **Brendan Carter – Laser Screed Operator & Survey Lead**

Brendan operates our advanced laser screeds and manages all 3D survey and layout requirements. His expertise ensures precision pours and optimal site setup, helping us consistently meet or exceed client expectations for slab flatness and accuracy.

## **Bodie Hampson – Estimator**

Bodie brings over 7 years of estimating experience and ensures all projects are accurately priced from the outset. By reviewing drawings, specifications, and site conditions, he delivers clear and competitive costings, helping protect project margins and reduce financial risk.

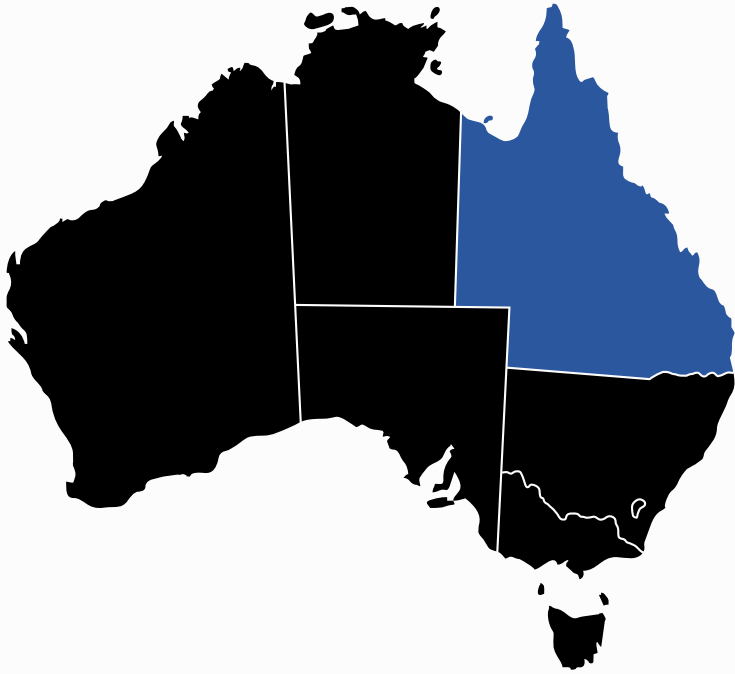
## **Bonnie McGregor – CFO / Company Accountant**

With over 8 years of experience, Bonnie manages all financial aspects of the business, including budgeting, forecasting, and compliance. She monitors real-time project costs and ensures accurate reporting to keep each job financially controlled and on track.





# WHERE DO WE SERVICE?



At **Mass Construction Group Australia**, we proudly service projects across Queensland — with a strong presence in **Mackay, regional hubs up north**, and expanding areas throughout the **state**. Our **experienced** team is equipped to **travel anywhere** required, bringing with them industry-leading equipment and the expertise to deliver high-quality concrete solutions on any scale. While the **majority** of our work is currently based in **Queensland**, our **vision** is to expand **nationally** and **internationally**, continuing to deliver the same standard of excellence wherever we're needed.

## CLIENT REVIEWS

**FERGUS**  
Residential | Commercial | Industrial

"Mass Concreting have shown themselves to be a quality operation who aren't afraid to tackle the more complex projects and are one of Fergus Builders trusted subcontractors"

Adam

**woollam**  
SINCE 1884

"Working with the team at Mass Concreting is a pleasure from start to finish. Their professionalism, expertise and attention to detail are evident throughout the entire process. The service they provide lays the foundation for a seamless project and efficient coordination."

Josh

**WHF**  
Design. Construct. Maintain.

"WHF Constructions has been working with MASS Concrete on various projects from large scale tilt panels warehouses through to small pathways and driveways, MASS has proven to us their skills and workforce meet our needs. We look forward to continuing the working relation with Todd and his team."

Chris