



The Intelligent Compliance Revolution

How AI Elevates Human Expertise in Life Science QA

Copenhagen – October 2025

The image features a dark grey background with a subtle, light blue geometric pattern of interconnected lines and dots. In each of the four corners, there are decorative illustrations of green leaves and small orange flowers. The text is centered and reads:

THANK YOU

for making our industry
better and our patients
safer and healthier



The greatest danger for innovation is
not failure.

It is the smooth* functioning of
something that has long been
obsolete.

A person in silhouette is standing in a library, looking at a smartphone. The background is a dark, starry space, suggesting a vast field of knowledge or data. The shelves are filled with books, and the lighting is dim, with a soft glow from the phone and the books.

Great Systems and Processes

- Implemented to the best of our knowledge and belief
- They were the best solutions that very intelligent people could come up with
- New technologies and insights can overtake them

Automatic telephone switching

- 1892: First automatic switching introduced
- Despite technology: Decades of adherence to operators
- 1910: Only 300k of 11 million subscribers had automatic hookups



Bloodletting

Over 3,000 years of standard therapy for many diseases



Evolution of pipetting





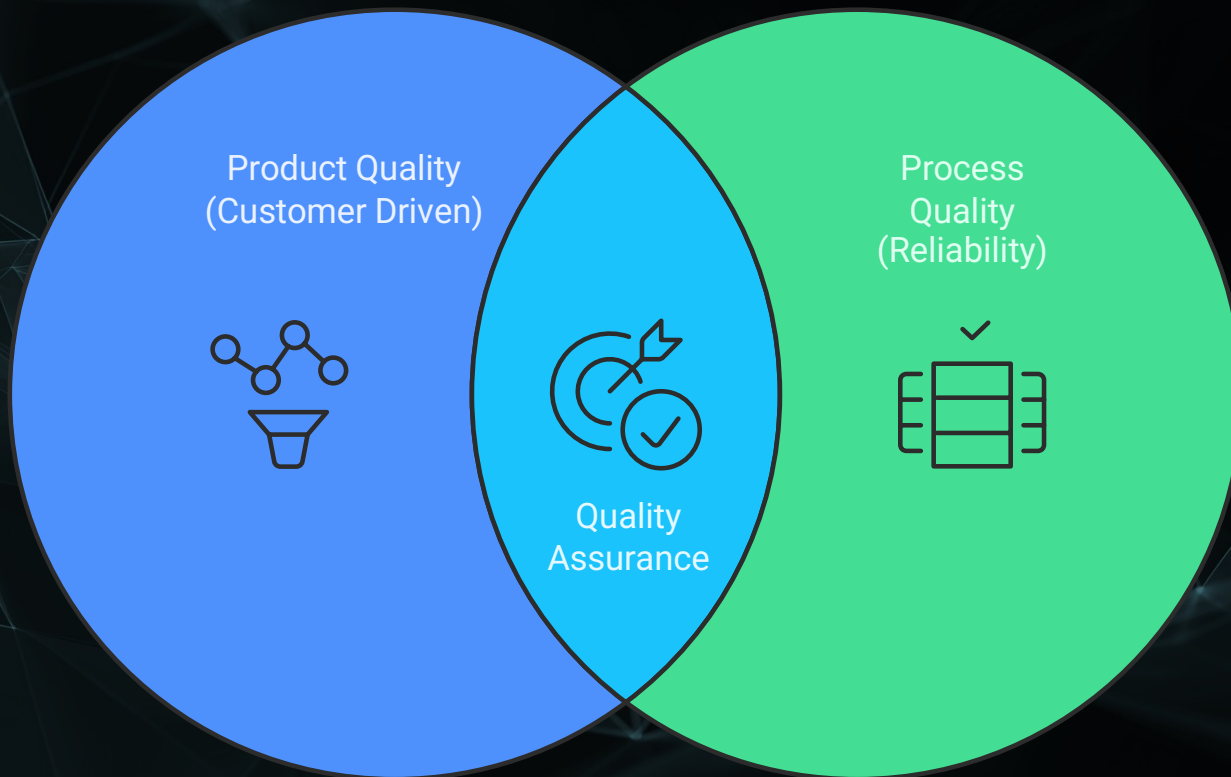
The frog in the cooking pot

- Accepted status quo
- Less questioning
- Stop thinking critically

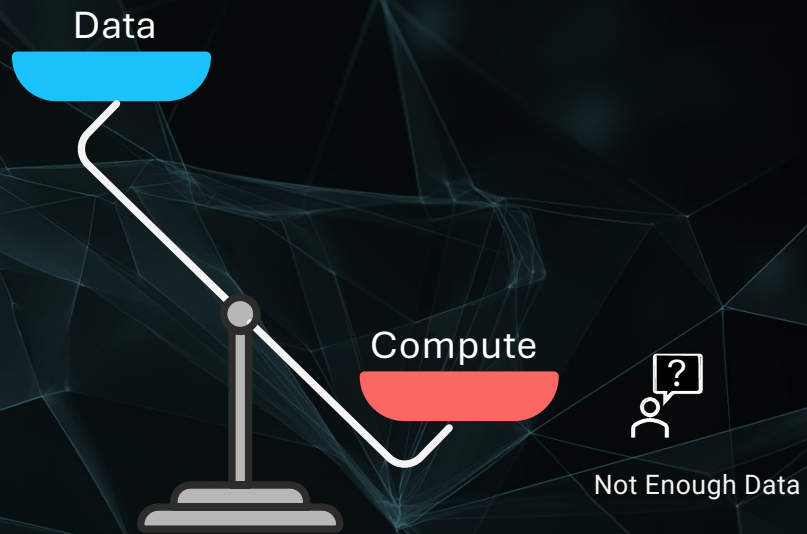




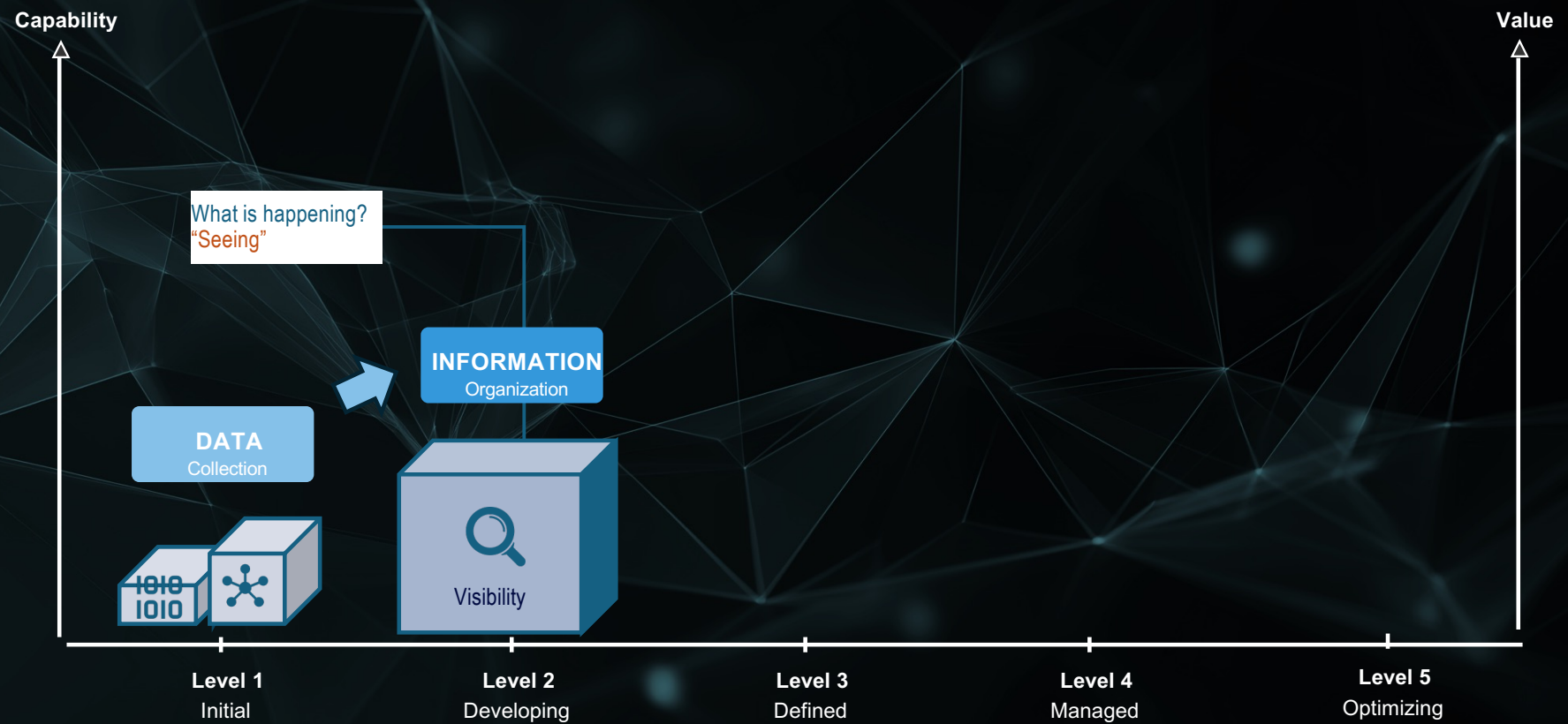
Ensuring Quality – Juran in 1991



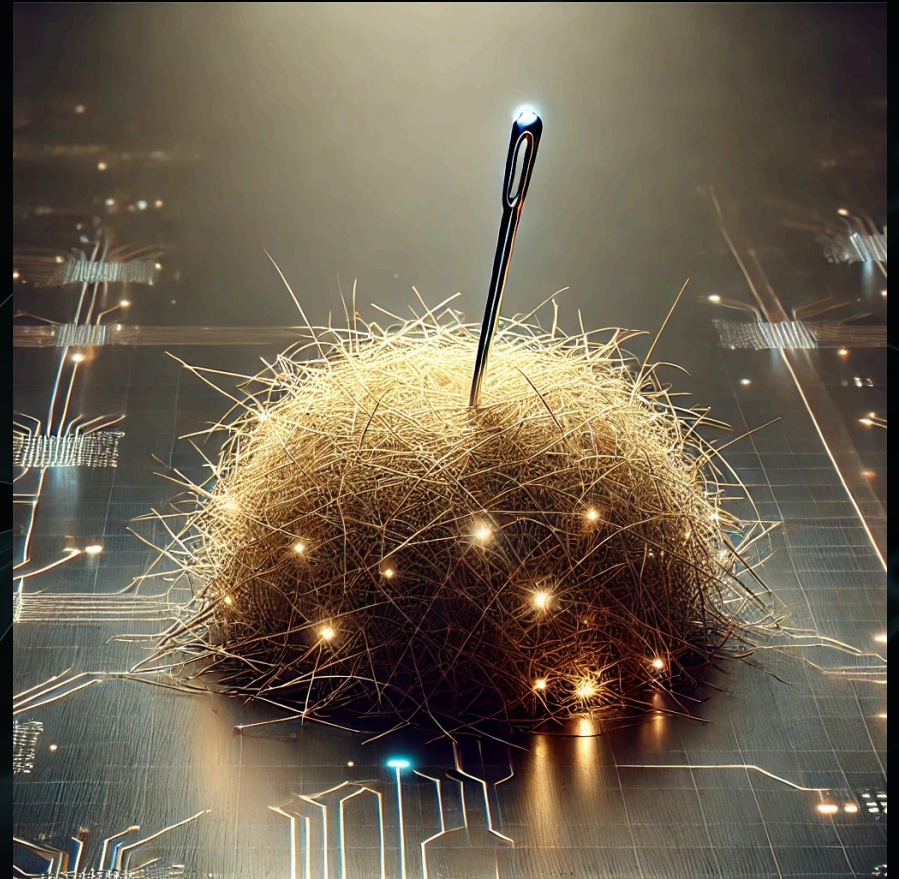
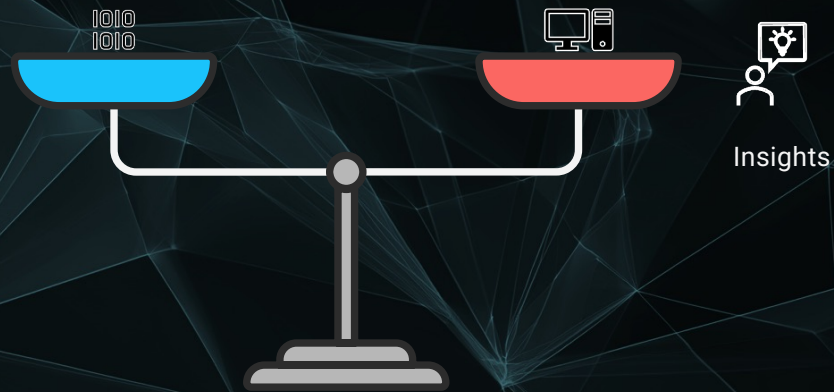
Not enough Data



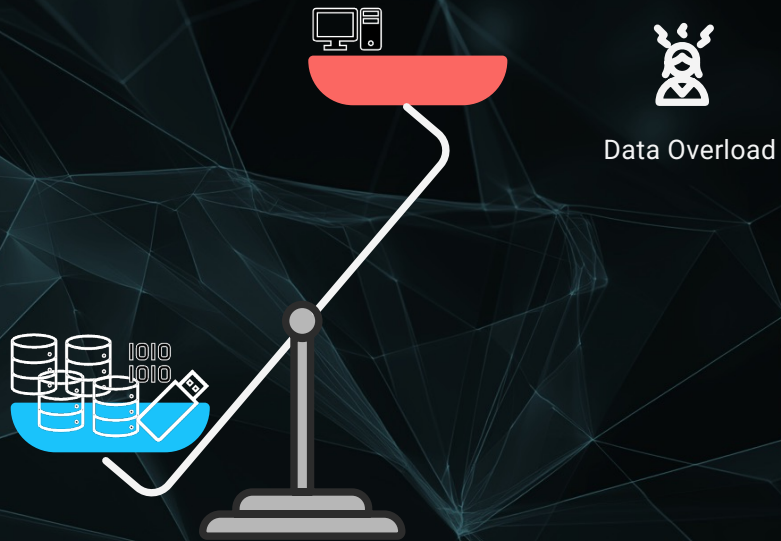
Data to Action Maturity Model



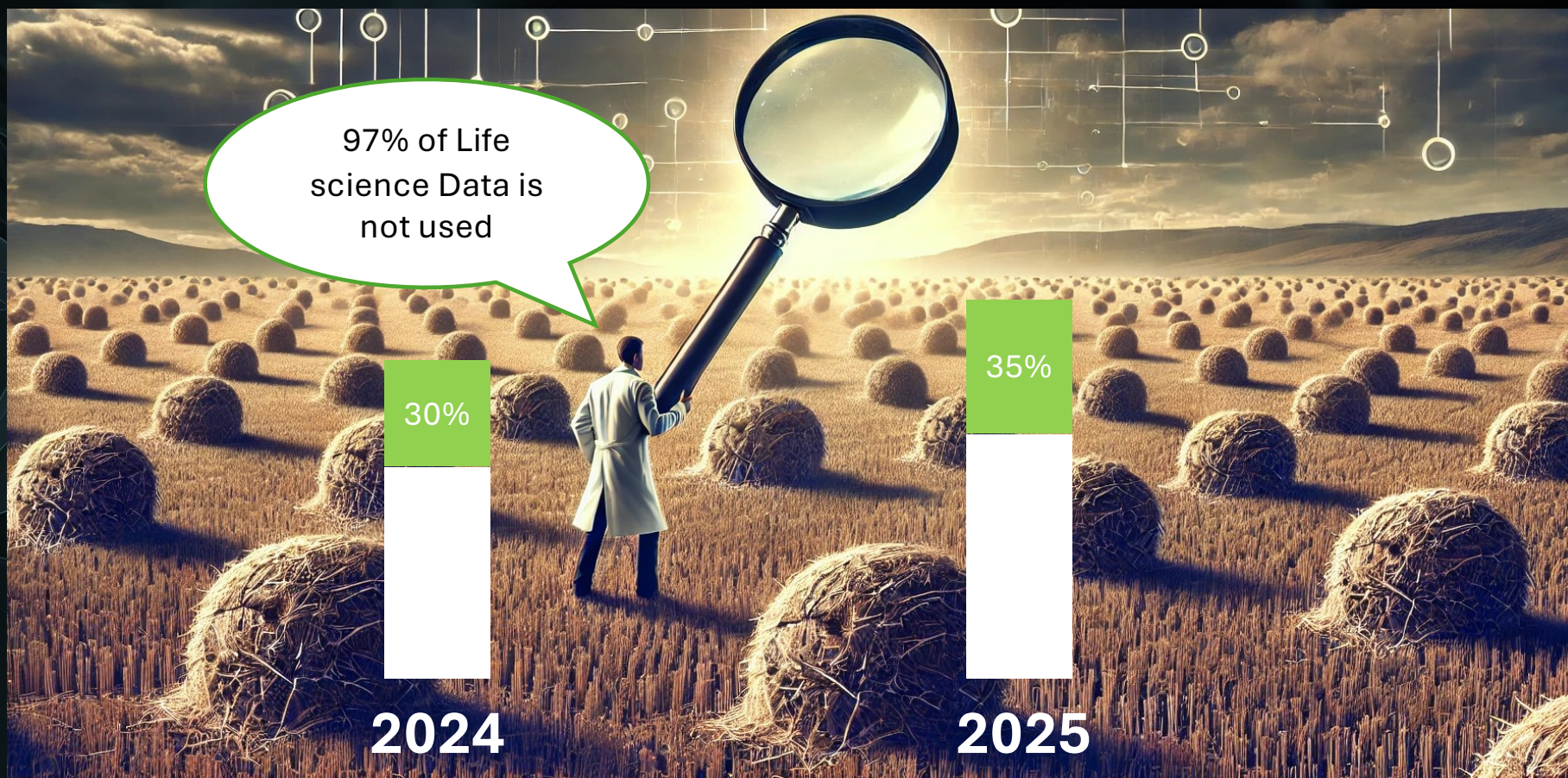
From Data to Action through Insights



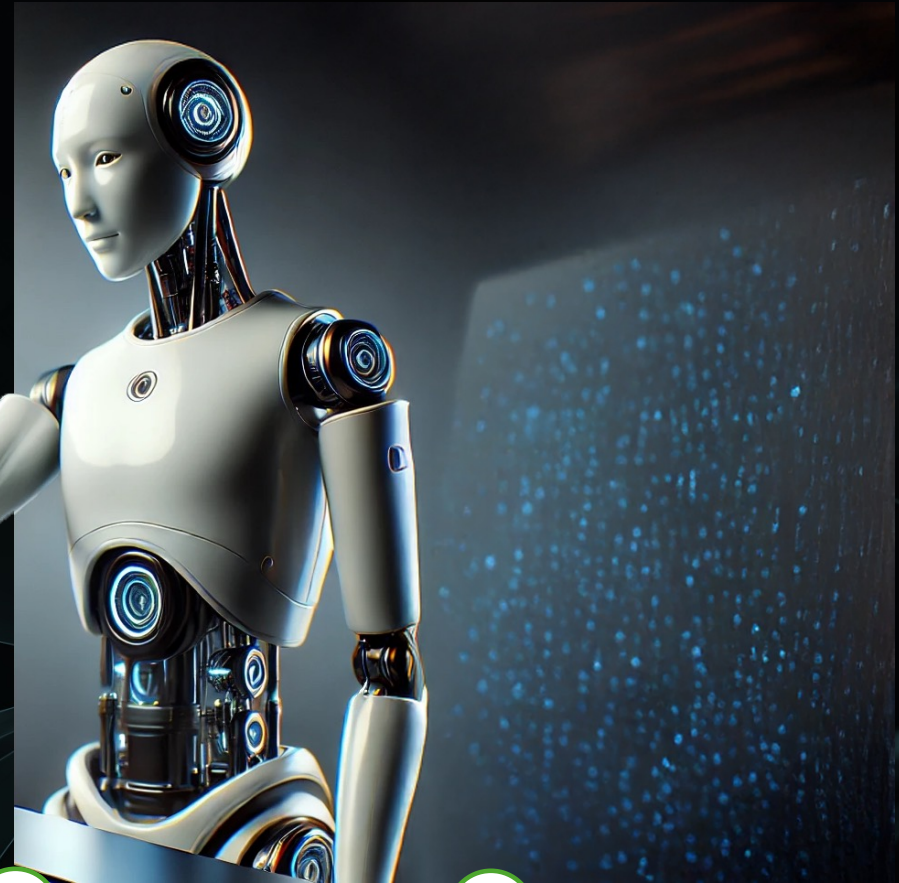
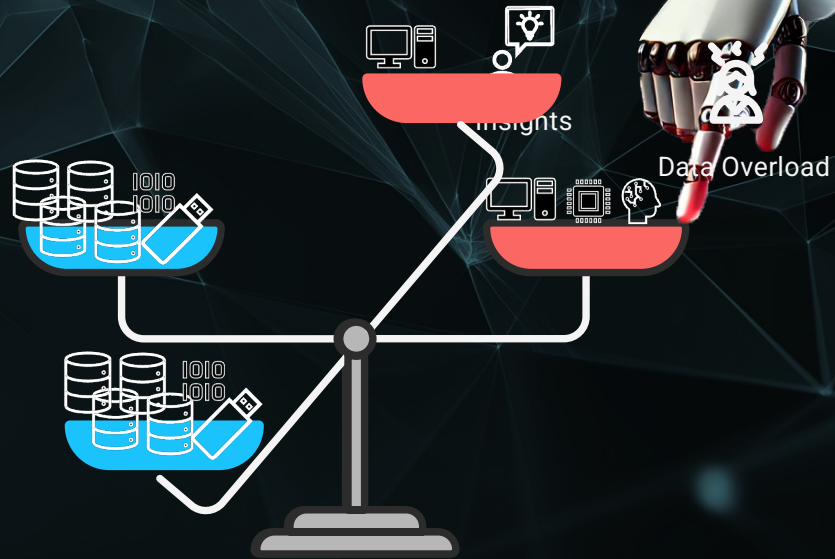
From Thirst to drowning



Creating more haystacks



AI to tilt the balance in our favour



1

Use unused data

2

Insights at the right time

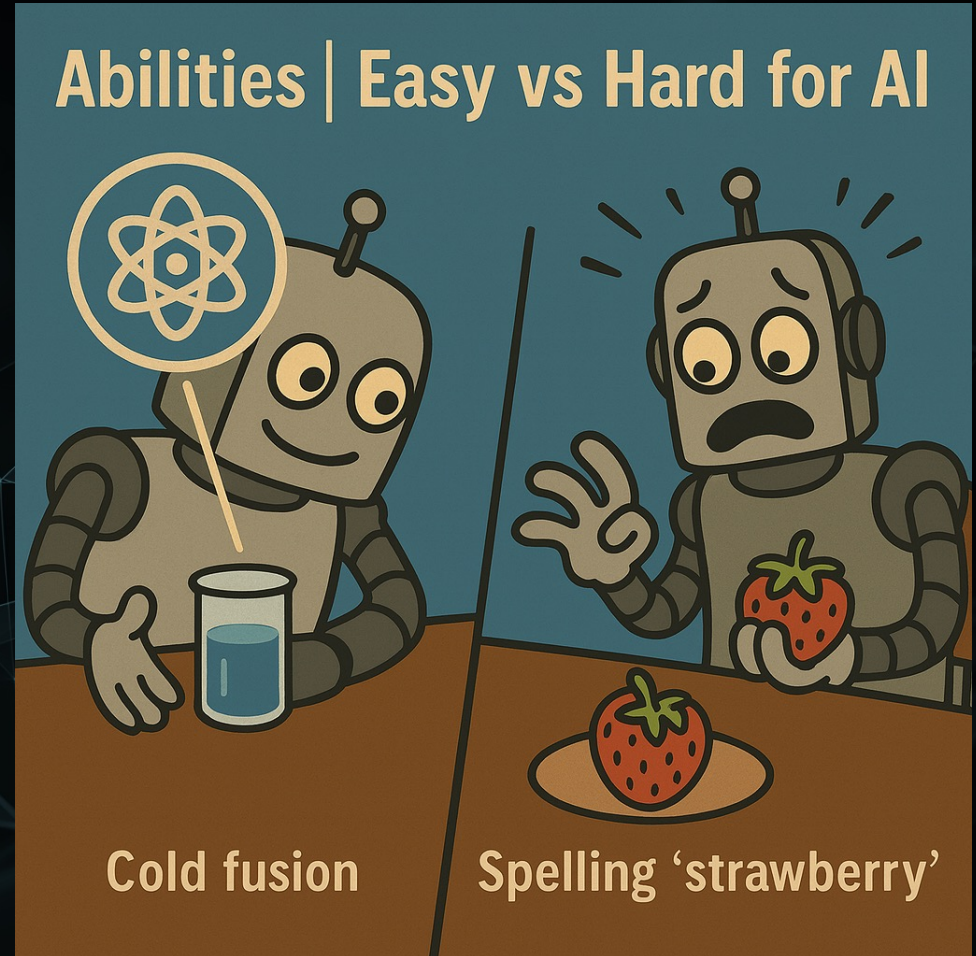
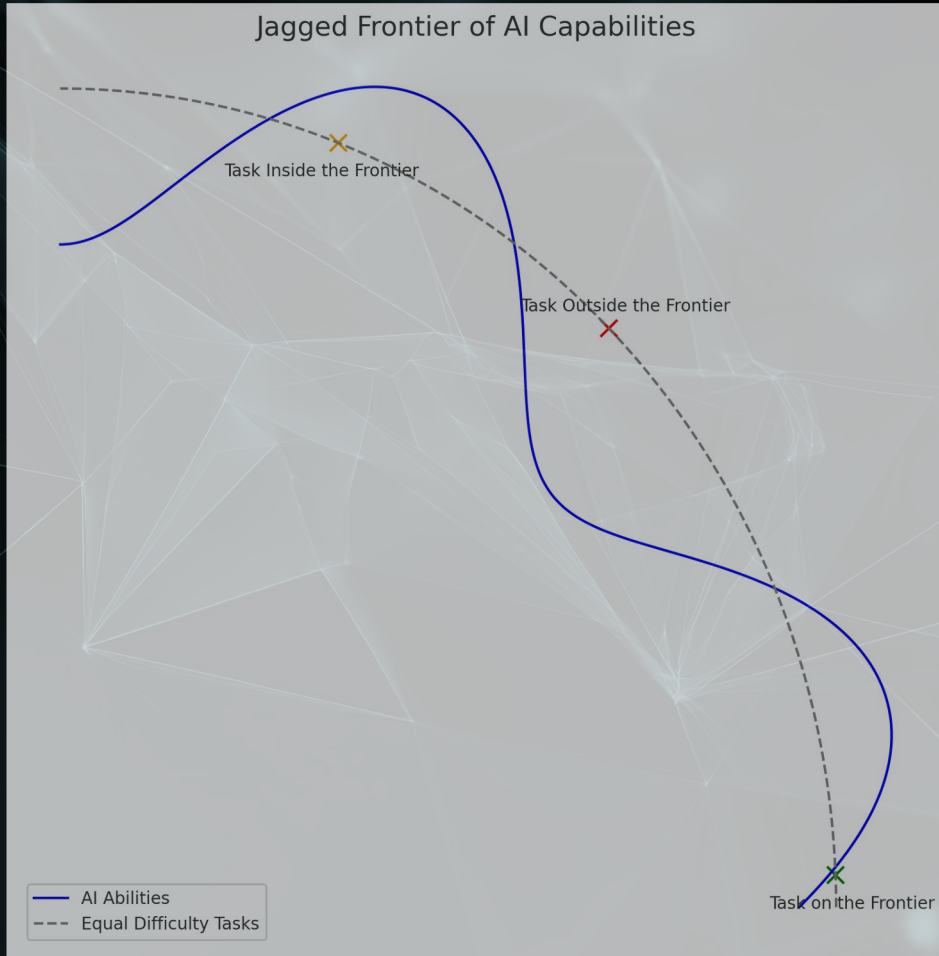
3

Complexity of Reality

AI READS MINDS




But...AI is not perfect...



AI – HUMAN PARITY

20
0
-20
-40
-60
-80
-100

E

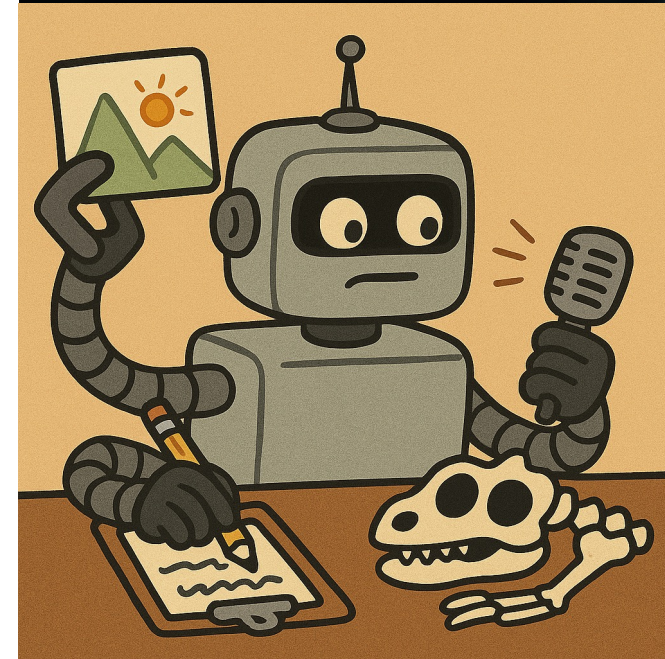


My doctor wrote me this prescription. What is it for?

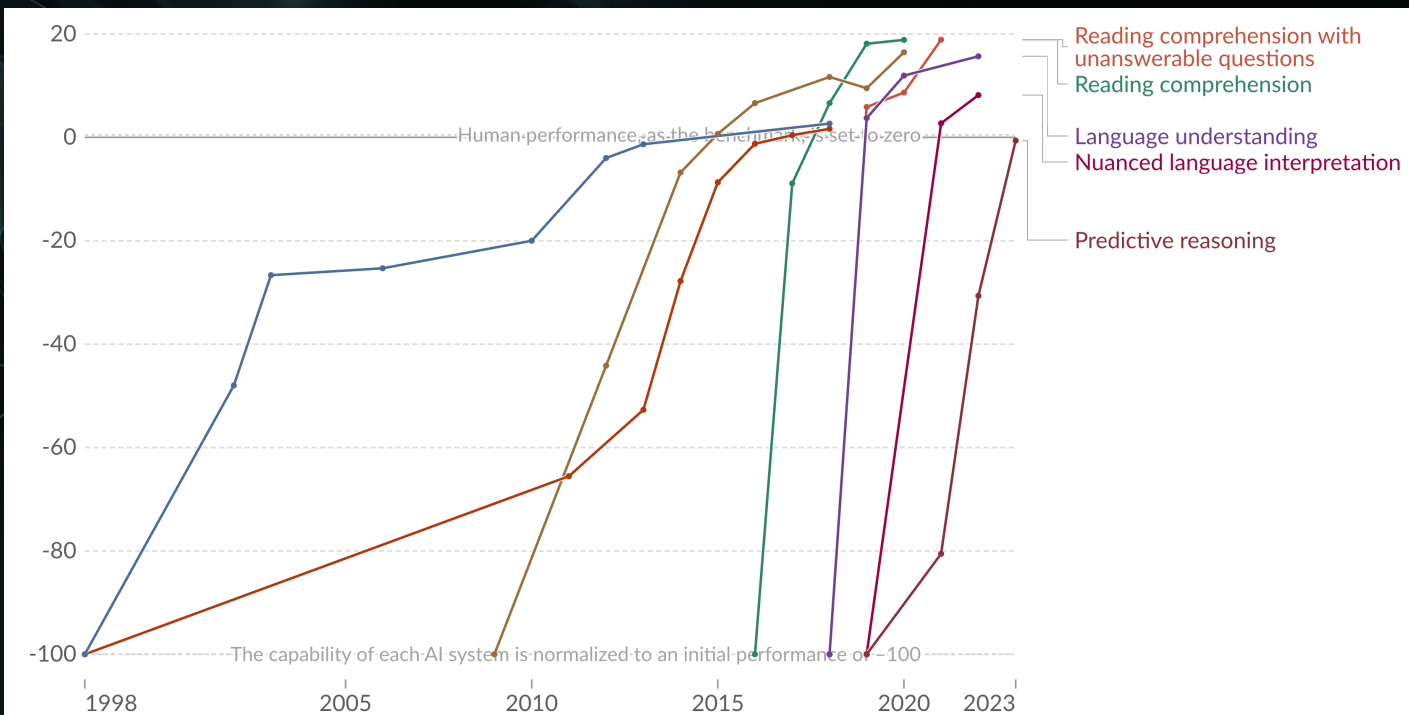
Data Note: It's for paracetamol.

gnition
n

nce | CC BY
r.



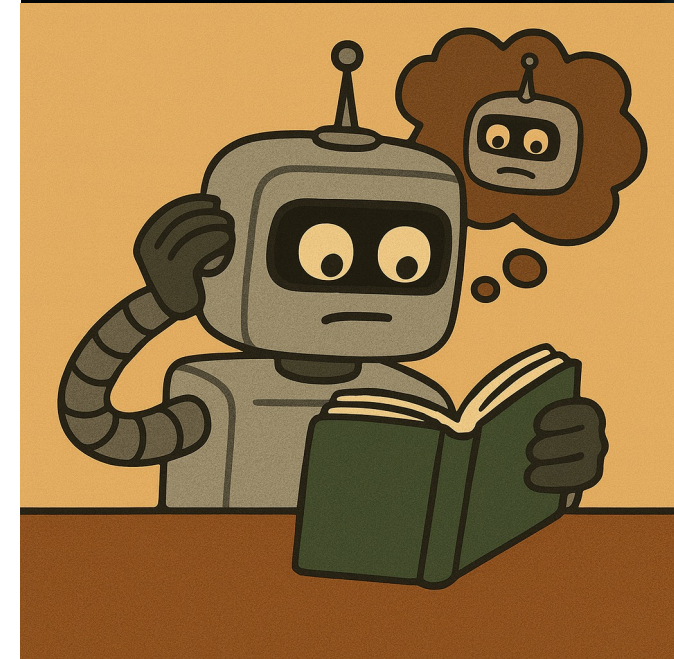
AI – HUMAN PARITY



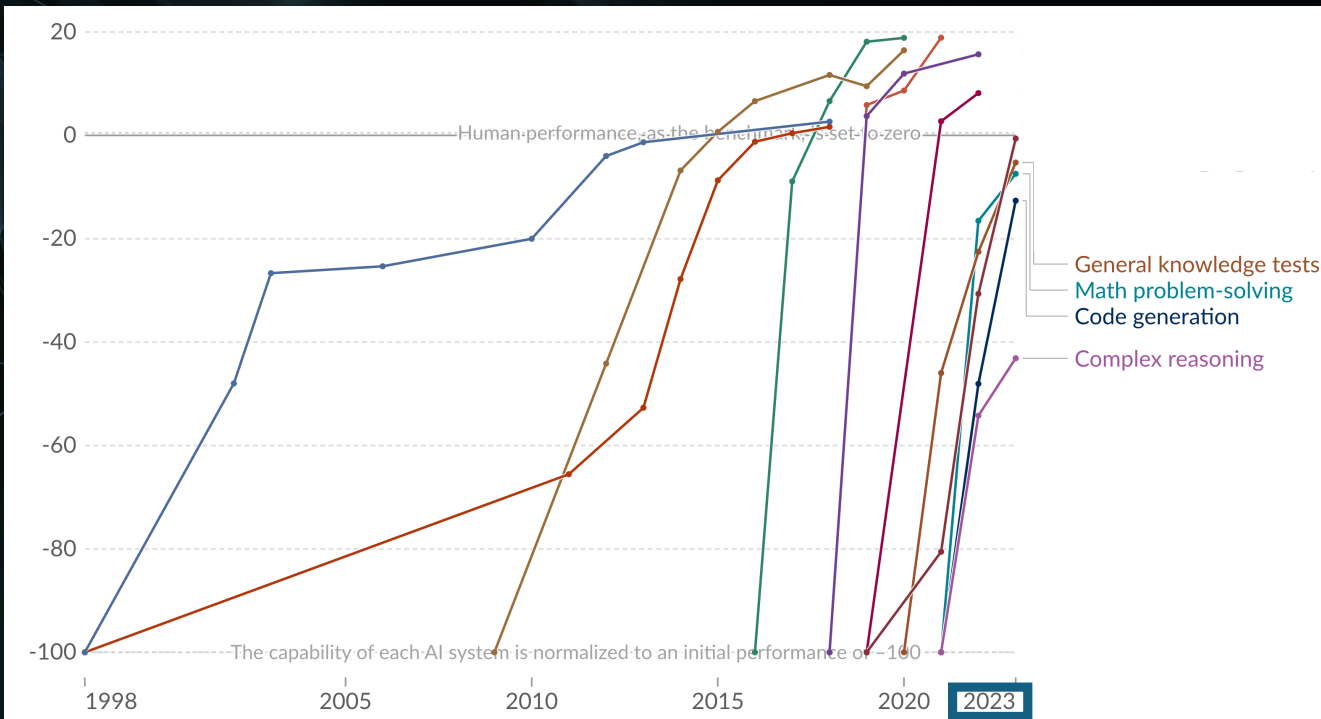
Data source: Kiela et al. (2023)

OurWorldinData.org/artificial-intelligence | CC BY

Note: For each capability, the first year always shows a baseline of -100, even if better performance was recorded later that year.



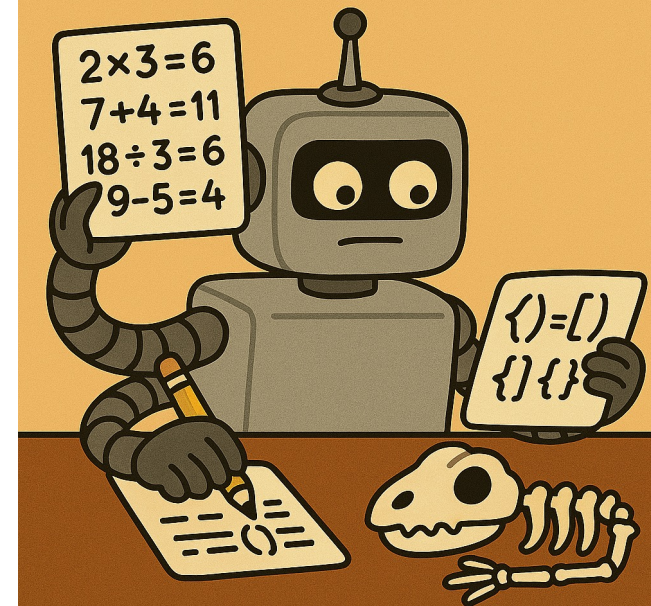
AI – HUMAN PARITY



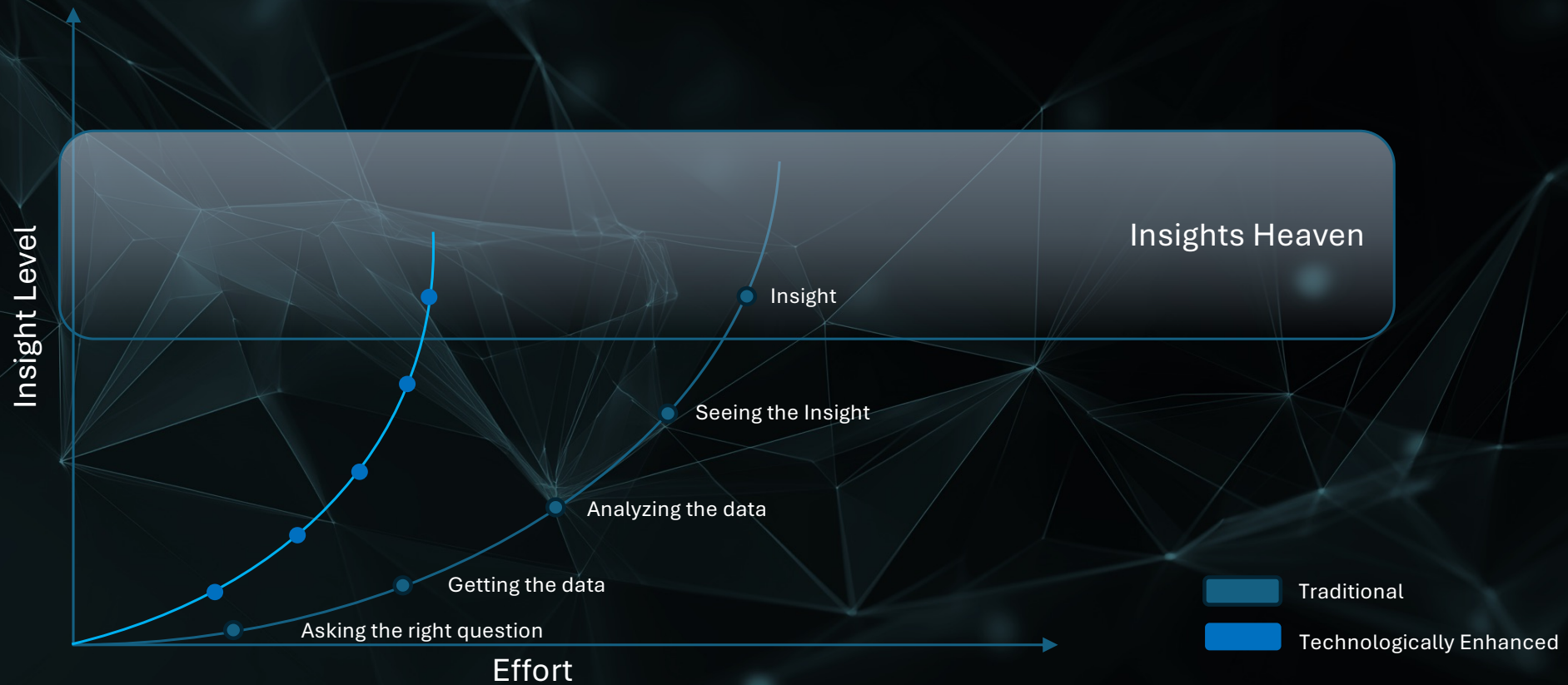
Data source: Kiela et al. (2023)

OurWorldinData.org/artificial-intelligence | CC BY

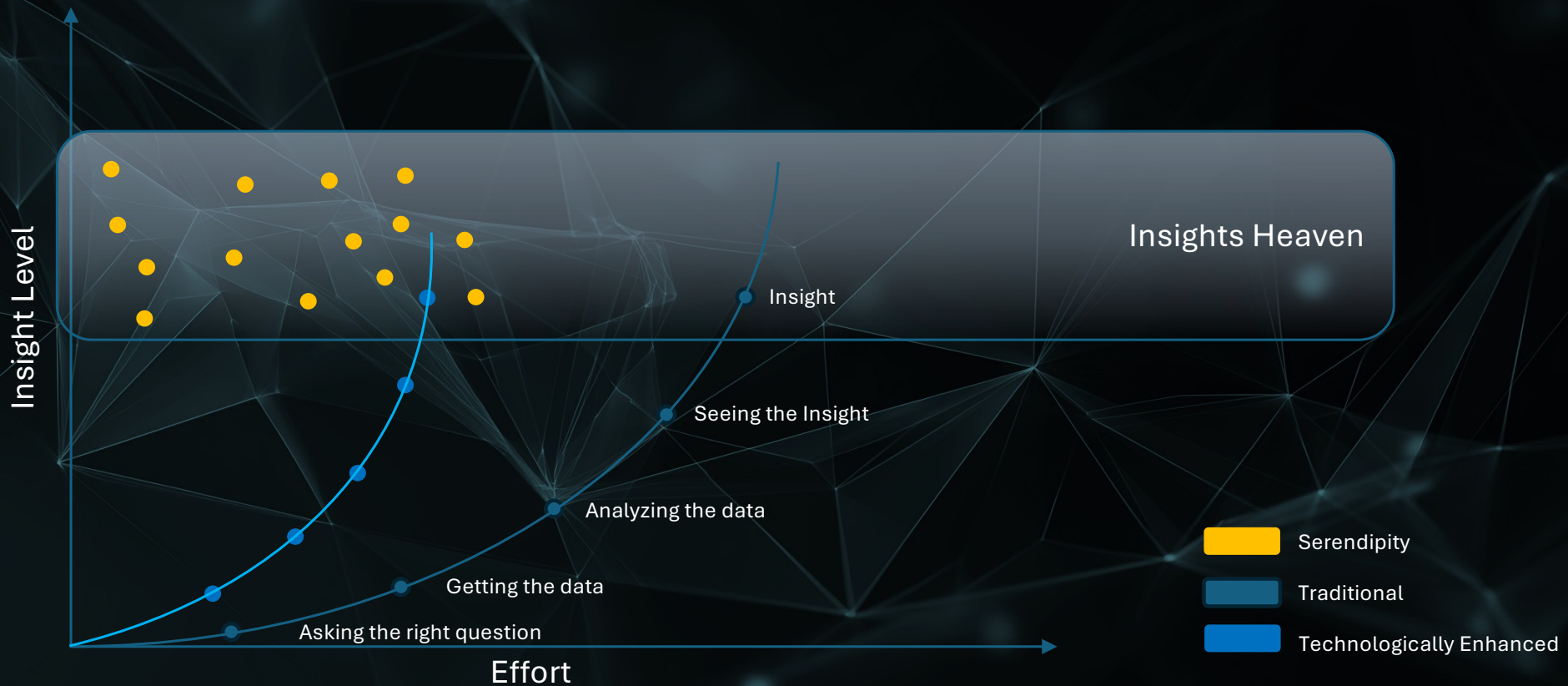
Note: For each capability, the first year always shows a baseline of -100, even if better performance was recorded later that year.



Data to insights



Discoverability – Serendipity



It will only get better



ANI

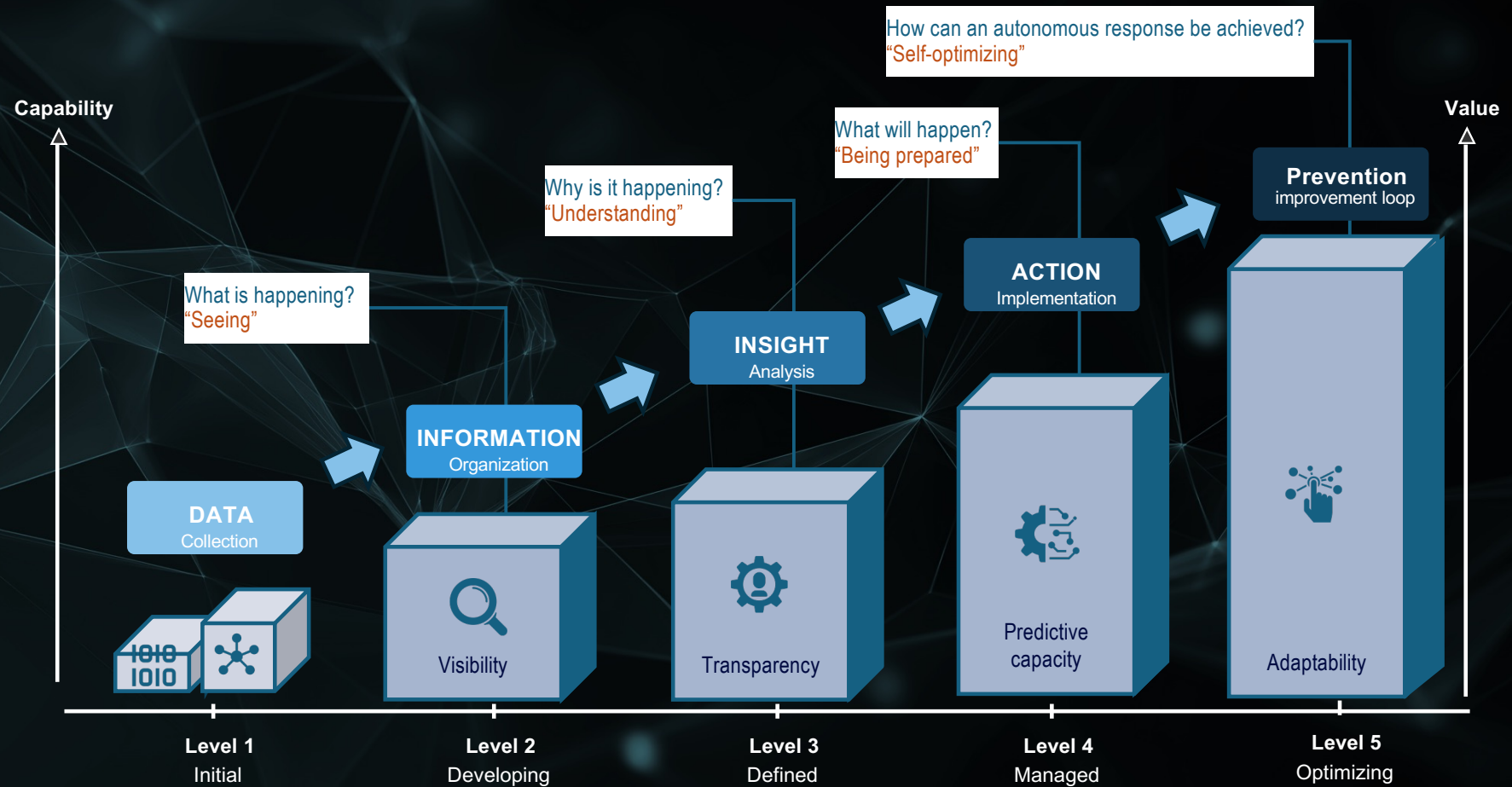


AGI



ASI

Data to Action Maturity Model



Beyond Continuous Improvement

- Efficiency = doing things better
- Effectiveness = solving new problems
- First principles = redefining problems





Outcome over output

- Don't look for nails
- Critically question what we want to achieve
- Only then choose the right tools



Call to Action

Think fundamentally:

- *Dissect problems back to their origins*



Outcome First:


- Define effect and patient safety before the tool



Culture of change:

- *Live continuously*
- *Check periodically*





“The best time to plant a tree was 20 years ago.
The second best time is now”

- Chinese proverb

Disrupt
Evolve
Solve

THANK YOU!

Follow me on
LinkedIn

