

*Eighteeth Surgical Binocular Loupes*  
**Brilliance 48<sup>o</sup> Pro**

---

Effortless Imaging, Pro-Level Wearing

---



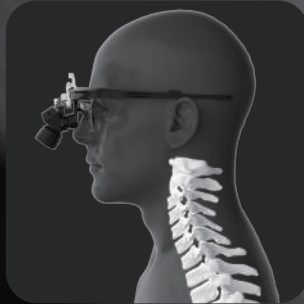
**Eighteeth**

# ***Unique Optical Structure: Free Shoulder & Neck***

Innovative optical structure designed to deflect the optical path of the dental loupes downward by 48 degrees

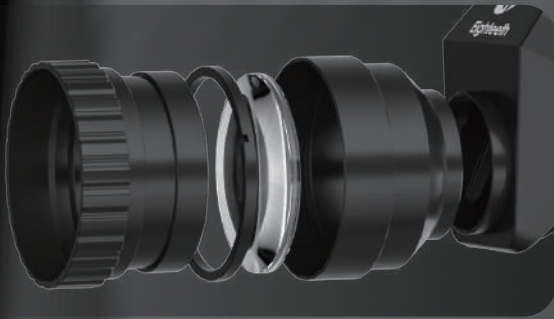
– Keeps the back and neck in an upright position, effectively protecting spinal health.

\*Research indicates that prolonged periods of working with a bent neck and back can place immense pressure on the entire spine, leading to disc wear or tears, which have lasting implications for a doctor's health over time.



# ***New-Updated Imaging: No Complex Adjustments***

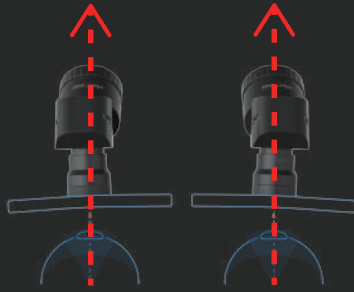
- Brand new optical structure: Optimized lens and frame design for a broader, clearer field of view



# Flexible focus & pupil distance adjustment to prevent eye strain

The pupil distance can be adjusted separately, coordinating the vision of both eyes and alleviating eye fatigue caused by visual convergence.

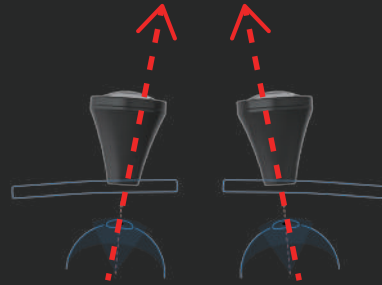
The focal length can be independently adjusted, effectively resolving image blurriness caused by differences in vision between the left and right eyes, thus reducing focus pressure on the eyes.



**Brilliance 48° pro**

Parallel field of view

Reduce intraocular rectus muscles tension



**Conventional loupes**

Binocular vision converging inward

Intensify intraocular rectus muscles tension

## 5x magnification: all oral details at a glance

Provides 5x magnification and up to 81mm of maximum field of view.

## Clear vision for precise dental procedures

Optimized achromatic optical path design ensures superior color correction capabilities.



**Brilliance 48° pro**



**Conventional loupes**



# Revolutionary Nose Pad Design: Pro-Level Wearing Experience

Comes with two adjustable nose pad  
Meet clinical needs in one magnifier

## Wide & soft rubber nose pad

- Embedded pre-bent steel strip
- Adjustable height
- Easy nose bridge adaptation



## Direct attached nose pad

- Direct wear without the need to remove prescription glasses
- Eliminates errors caused by eye prescription
- Ensures precise working distance



## Ergonomic design for comfortable experience

- Center of gravity shifted back to reduce nose bridge pressure

## Newly upgraded frame for easy lens customization

- Detachable eyeglass frame for quick lens swapping



# Specification

Magnification Ratio	5X
Working Distance	350~400mm, 400~450mm 450~500mm, 500~550mm (optional)
Pupil Distance	52-76mm (individually adjustable on both sides)
Weight	94.3g (with frame)
Field of View	49~57mm, 57~65mm 65~73mm, 73~81mm
Color	Black/Silver

\*Adapted to Eighteeth wireless headlight

