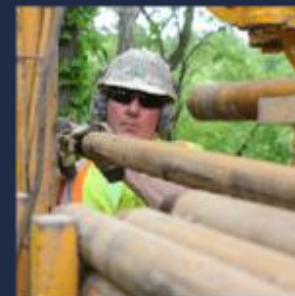
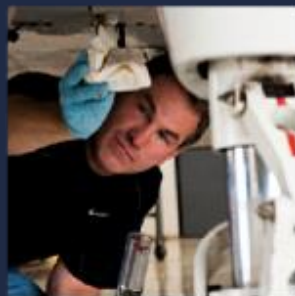


2022 OHIO ASPHALT PAVING CONFERENCE



OHIO DEPARTMENT OF
TRANSPORTATION

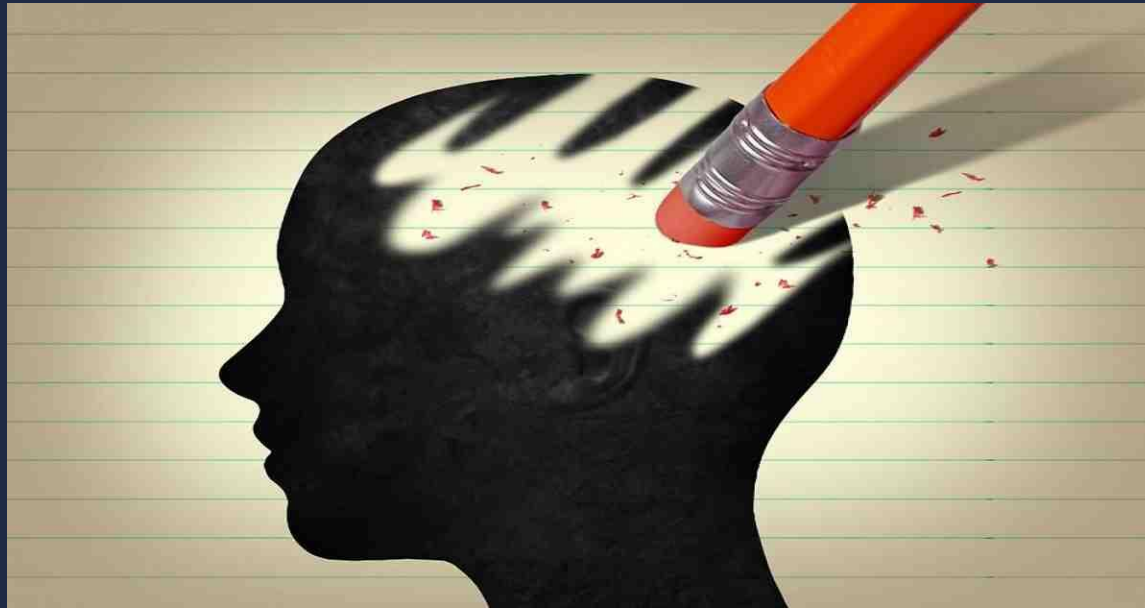
ODOT ASPHALT SPECIFICATIONS UPDATE AND REVIEW OF LIFT THICKNESSES

Dave Miller, P.E.
Office of Pavement Engineering

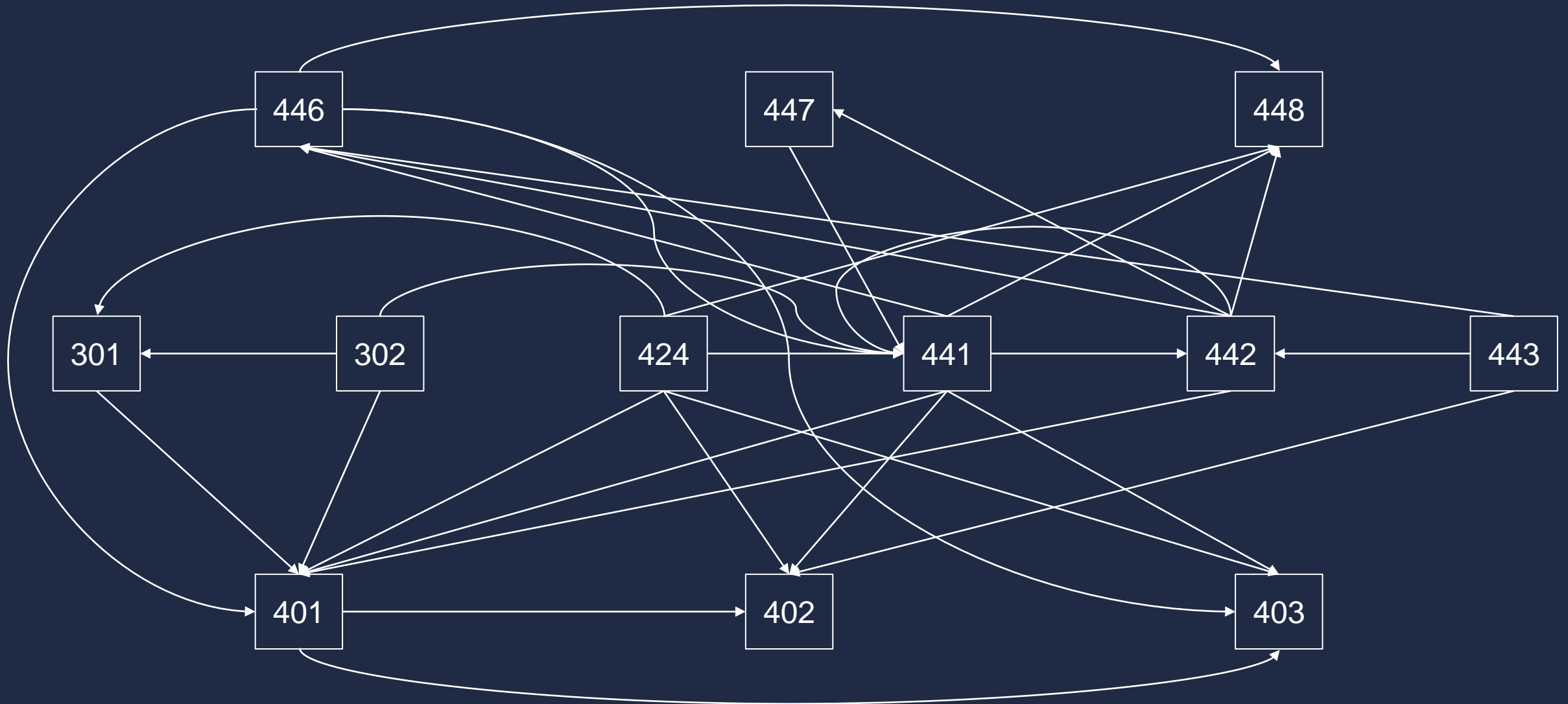


ASPHALT SPECIFICATION UPDATE

- Complete reorganization of asphalt specs
- Forget everything you knew about ODOT specs



WHY REORGANIZE?



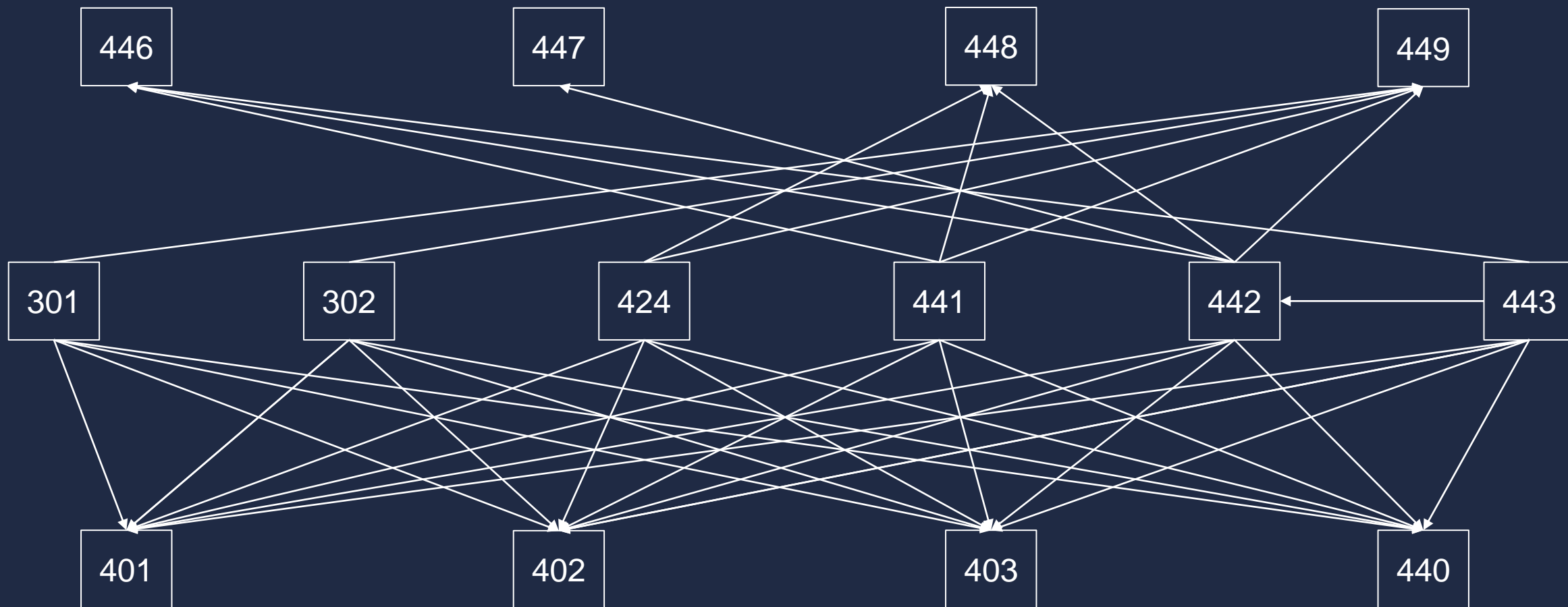
GOALS

- Untangle the web
- Organize foundational specs in silos
 - Laydown/field operations
 - Plant operations
 - QC requirements
 - In-common mix design requirements

GOALS

- Keep pay item numbers the same
- Add additional item numbers as needed
- Reduce exceptions and cross references
- Make future revisions easier
- Avoid making lots of technical changes

NEW ORGANIZATION



NEW ORGANIZATION - FOUNDATIONAL SPECS

Previously		New	
401	Asphalt Concrete Pavements - General	401	Asphalt Concrete Field Operations
402	Asphalt Concrete Mixing Plants	402	Asphalt Concrete Mixing Plants
403	Asphalt Concrete Quality Control and Acceptance	403	Asphalt Concrete Quality Assurance
		440	Asphalt Concrete Mix Design - General

NEW ORGANIZATION - ASPHALT MIXES

Previously		New	
301	Asphalt Concrete Base	301	Asphalt Concrete Base
302	Asphalt Concrete Base	302	Asphalt Concrete Base
424	Fine Graded Polymer Asphalt Concrete	424	Fine Graded Polymer Asphalt Concrete
441	Asphalt Concrete - Mix Design and Quality Control	441	Marshall Asphalt Concrete
442	Superpave Asphalt Concrete	442	Superpave Asphalt Concrete
443	Stone Matrix Asphalt Concrete	443	Stone Matrix Asphalt Concrete

NEW ORGANIZATION - ACCEPTANCE METHODS

Previously		New	
446	Asphalt Concrete Core Density Acceptance	446	Asphalt Concrete Core Density Acceptance
447	Asphalt Concrete Mat and Joint Core Density Acceptance	447	Asphalt Concrete Mat and Joint Core Density Acceptance
448	Asphalt Concrete Acceptance	448	Asphalt Concrete Gauge Density Acceptance
		449	Asphalt Concrete Non-Density Acceptance

ASPHALT SPECIFICATION REORGANIZATION

- Other specs updated
 - C&MS Items: 109, 251, 252, 253, 255, 407, 422, 703
 - Proposal Notes: 415, 534
 - Supplemental Specs: 803, 822, 823, 826, 856, 859, 860, 872, 880, 887
 - Supplements: 1036, 1041, 1055, 1101, 1102

ASPHALT SPECIFICATION REORGANIZATION

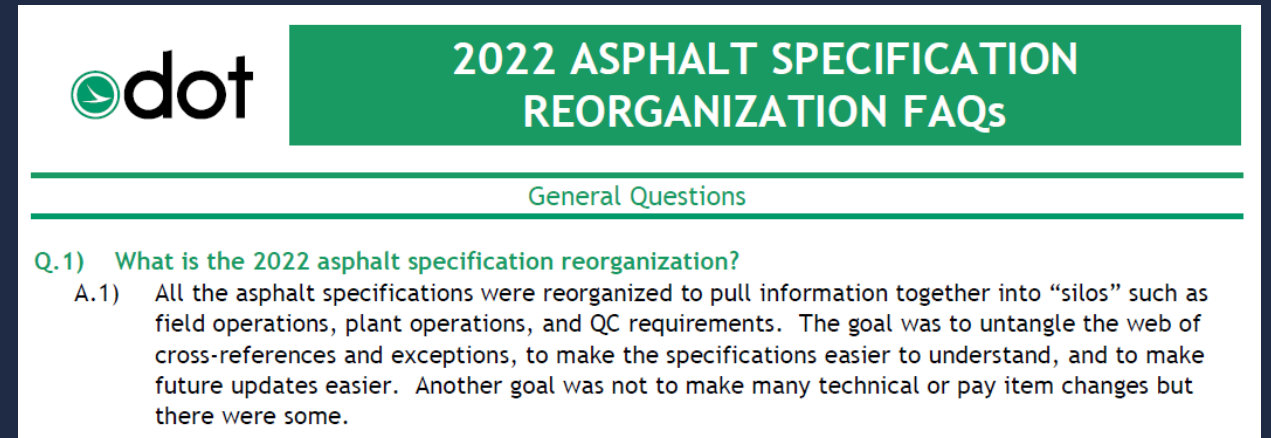
- Where can I get more info?

**STATE OF OHIO
DEPARTMENT OF TRANSPORTATION
SUPPLEMENTAL SPECIFICATION 800
REVISIONS TO THE 2019 CONSTRUCTION & MATERIAL SPECIFICATIONS
DATED 01/21/2022**

- First letting with new SS 800 – 04/28/22

ASPHALT SPECIFICATION REORGANIZATION

- Where can I get more info?



~~ODOT ASPHALT SPECIFICATIONS UPDATE AND REVIEW OF LIFT THICKNESSES~~

Dave Miller, P.E.
Office of Pavement Engineering

LIFT THICKNESS UPDATE/REFRESHER

- PDM Section 406 Lift Thickness and Usage Guidelines
 - Surface
 - Intermediate
 - Base
- PDM Figure 406-1 Asphalt Concrete Quick Reference Guide

LIFT THICKNESS UPDATE/REFRESHER

Effect of Lift Thickness

- Optimum lift thickness
 - 4x Nominal Maximum Aggregate Size (NMAS)
- Acceptable lift thickness = 3x to 5x NMAS
- Problems Compacting
 - 2x NMAS or less
 - 6x NMAS or more
- Especially critical paving on uneven surfaces

LIFT THICKNESS UPDATE/REFRESHER

Asphalt Concrete Quick Reference Guide

Page 1

406-1

January 2022

Reference Section

406

Item	Minimum Lift	Maximum Lift	Taper to 0''*	Uniform Thickness Required
301 Asphalt Concrete Base (449)	3"	6"	No	No
302 Asphalt Concrete Base (449)	4"	7.75"	No	No
424 Fine Graded Polymer Asphalt Concrete, Type A (449)	0.625" (5/8")	1"	No	Yes
424 Fine Graded Polymer Asphalt Concrete, Type B (448 & 449)	0.75"	1.25"	No	Yes
441 AC Surface Course, Type 1 (446)	1.25"	1.5"	No	Yes
441 AC Surface Course, Type 1 (448)	1"	1.5"	No	Yes
441 AC Surface Course, Type 1 (449)	1"	1.5"	No	No
441 AC Intermediate Course, Type 1 (448)	1"	1.5"	No	Yes
441 AC Intermediate Course, Type 1 (449)	1"	1.5"	Yes	No
441 AC Intermediate Course, Type 2 (446 & 448)	1.75"	3"	No	Yes
441 AC Intermediate Course, Type 2 (449)	1.75"	3"	Yes	No

LIFT THICKNESS UPDATE/REFRESHER

Asphalt Concrete Quick Reference Guide Page 1		406-1 January 2022 Reference Section 406		
Item	Minimum Lift	Maximum Lift	Taper to 0"*	Uniform Thickness Required
442 AC Intermediate Course, 19mm, Type A or B (446 & 448)	2.25"	3.75"	No	Yes
442 AC Intermediate Course, 19mm, Type A or B (449)	2.25"	3.75"	Yes	No
442 AC Intermediate Course, 12.5mm, Type A or B (446 & 448)	1.5"	2.5"	No	Yes
442 AC Intermediate Course, 12.5mm, Type A or B (449)	1.5"	2.5"	Yes	No

QUESTIONS

Dave Miller, PE
Office of Pavement Engineering
614-995-5991
dave.miller2@dot.ohio.gov

Last updated 2/11/2022