

# SWCD STREAM

Wabasha County Soil & Water Conservation District




Wabasha County Soil & Water Conservation District  
 611 Broadway Ave #10  
 Wabasha, MN 55981  
 (651) 565-4673  
[WabashaSWCD.com](http://WabashaSWCD.com)

## WABASHA SWCD'S MOST WANTED INVASIVE SPECIES

Robinia pseudoacacia or Black Locust is native to the US but was not originally found in the Upper Midwest. It is now spreading into states like Minnesota that are outside of its historical range. Black Locust primarily invades disturbed habitats, degraded woods and thickets, where it crowds out native vegetation and forms single species stands mostly from suckering. The leaves, stems, bark and seeds contain toxic compounds that can be fatal to cattle and horses. While looking very similar to our native Honey Locust tree (valuable source of food for livestock), Black Locust seed pods is only two to four inches long while Honey locust pods are twelve to eighteen inches. To remove, cut the Black Locust in late summer or early fall and immediately apply herbicide to the freshly cut stump. Effective herbicides include glyphosate, triclopyr and imazapyr. If you need help identifying Black Locust or learning how to properly manage it, scan the QR code or contact the office for more information.

Cost-share for Black Locust is currently unavailable through Wabasha SWCD but for other invasive species contact your local SWCD technician Katelyn Abts at 651-560-2045 or Katelyn.Abts@mncd.net for possible cost-share.

## BLACK LOCUST



## WANTED



Scan this QR code for more info or visit the MN DNR invasive species webpage.

## March - April 2025 News

- We are still accepting orders for tree sale. Check out current inventory by looking on the website or calling the office.
- Nitrogen Management Event is taking place in Aune Hall in Rochester on March 13th. Hosted by MN U of M Extension, going from 8:00 am to 4:00 pm. To pre-register, scan the QR code or visit [z.umn.edu/NitrogenMeeting](http://z.umn.edu/NitrogenMeeting)
- Free well tests are still available through the MN Dept of Health. To receive a test kit, you must fill out an online form by either scanning the QR code below or call 651-560-2045 to fill out the form by phone. More info is available at Wabasha SWCD Website



Nitrogen Management



Test Kits

## Feedlot Registration Notice

Feedlots in Minnesota are required by rule to register with the State once during a four-year period. The current registration cycle is ending on December 31, 2025, for the current four-year period of January 2, 2022, through January 1, 2026. This means that many feedlot owners in MN will need to update their facility registration in the next several months. Feedlot owners needing to update registration information for their facilities should have received a letter from the MPCA in late February or early March. If a letter was not received, it is recommended to double check your registration to ensure that it is up to date. Sometimes addresses or owners change, so please consider this article a reminder to double check on your feedlot's registration status. Updating feedlot registration is done in MPCA's online feedlot registration service. The online service makes the process quick and easy for you and increases efficiency for the MPCA. When you fill out the online form, your feedlot registration will be pre-populated with information from your last feedlot registration. You will also receive an auto-generated receipt letter via email to confirm your registration has been completed.



Additional information regarding feedlot registration, and the online registration service, can be found on the MPCA website at: <https://www.pca.state.mn.us/business-with-us/feedlot-registration> or following the QR code below. After you receive your letter in the coming weeks regarding your feedlot registration follow the instruction of how to register included in the letter.

For questions/assistance related to setting up an account/password reset, please contact e-Services at 1-844-828-0942. There is a 9-minute video

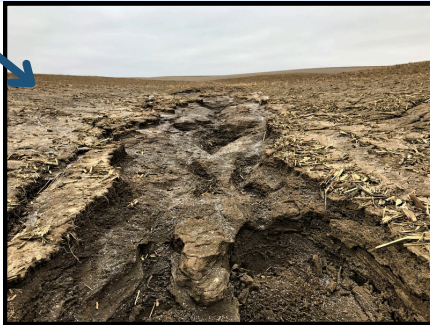


available online to aid in registration.

For questions/assistance related to filling out the online registration form, information that is prepopulated, or other registration related items contact **Mark Gernes at (507) 344-5260**.

## Look Familiar?

Spring is often the time of year when concentrated erosion is most noticeable on our farm fields. Many are at their most vulnerable, lacking the protection



of living vegetation. Erosion can occur in many ways on the landscape but becomes the most obvious when it concentrates into gullies like the one shown in the photo above. Not only are these the most visible examples of erosion, but they can also be the most impactful, both to the fields where they are occurring and to the streams below.

Much of what we do at the SWCD is aimed at preventing erosion from occurring, but weather and other factors make it nearly impossible to avoid it completely. There are a variety of conservation practices in our toolbox that can address concerns like this. Whether you've been battling erosion like this for years or you just noticed it show up after a heavy rain, we are here to help. For assistance contact Matt Kempinger at 651-560-2055 or [Matthew.Kempinger@mn.nacdnet.net](mailto:Matthew.Kempinger@mn.nacdnet.net)



## Support our Pollinators!

The Fall 2025 Application Period is now open for the Lawns to Legumes Grant program. Anyone who lives in Minnesota and is interested in turning their outdoor residential spaces into a pollinator paradise is open to apply. This program is open to both homeowners and renters! This program aims to increase habitat of at risk pollinator species, such as the rusty patched bumble bee, the Minnesota state bee! Those who may receive grants are eligible for up to \$400 in cost reimbursement. A variety of projects can be funded, from small native pocket planting, pollinator trees and shrubs, pollinator lawns consisting of short native grasses and flowers, and larger pollinator meadows.

## It's Not Too Late to Order Trees!

The days are winding down to order tree's! Tee-pickup is mid to late April and you will be notified about two weeks ahead of time. The trees will come dormant but will need to be planted as soon as possible.

We are sold out of Quaking Aspen, Paper Birch, Hackberry, Sugar Maple, Red-osier Dogwood, Red Splendor Crabapple, Red Maple and Norway Spruce. Call the office at 651-560-2045 to know the exact inventory at the time of ordering. Tree sale order forms are on the Wabasha SWCD website.

For people who have purchased tree's and need assistance planting, reach out to Ella Jurgerson our Americorps Member for help with planting trees! Ella is also able to assist with invasive species removal projects. Reach at 651-560-2061 or [jurgerson.ella@gmail.com](mailto:jurgerson.ella@gmail.com)



Lawns to Legumes is administered by the Minnesota Board of Water and Soil Resources (BWSR) in partnership with Blue Thumb - Planting for Clean Water. To apply visit <https://bluethumb.org/lawns-to-legumes/apply/>