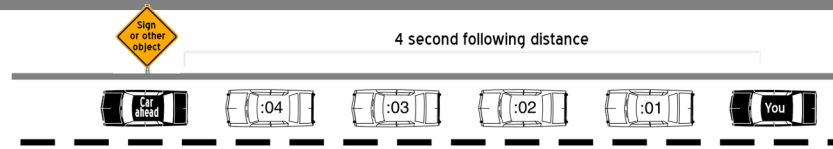


Driving Basics!

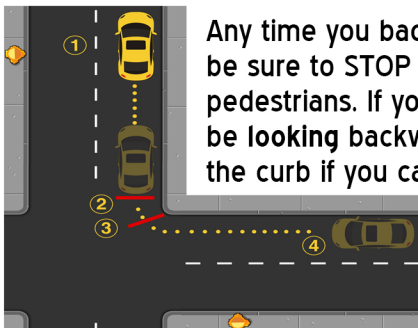
Learn the basics of driving on your way to mastery!



Important Concepts

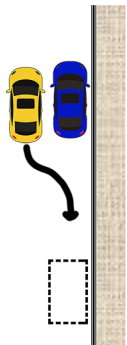


Always stay at least 4 seconds away from the car in front of you! When the car ahead passes a fixed object, count backwards from 4.



Any time you back around a corner or a driveway, be sure to STOP before the sidewalk and look for pedestrians. If you're driving backwards, you should be looking backwards too. Try to stay within 18" of the curb if you can, and keep those tires off the curb.

It helps to do this maneuver at a very slow speed; 1 mph or less. 2 mph is too fast!



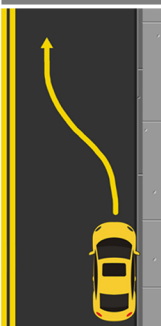
When parallel parking, start next to the vehicle you'll park behind. Always look to the rear when backing! It's OK to use the right side mirror occasionally.

- 1) Turn the wheel one full rotation to the right
- 2) Very slowly, get to a 45 degree angle, then straighten your wheel.
- 3) Go straight back until the back tire is about 18" from the curb, then turn the wheel all the way left. Keep backing until your front tire reaches the line.

Parking on a hill? You must be within 12" of the curb, always set your parking brake, and turn your wheel the correct way. If you are on an uphill slope with a curb, turn the wheels AWAY from the curb.



If you are on a downhill slope, or uphill without a curb, turn the tires TOWARDS the curb.



Any time you change lanes or re-enter traffic from the side of the road, ALWAYS:

- 1) Signal
- 2) Check rearview mirror
- 3) Check sideview mirror
- 4) Check over your shoulder into the blind spot -->



You must stop COMPLETELY at red lights and stop signs!



Try to drive right around the speed limit; not too slow, and not too fast. No sign? The max speed limit in cities is 25mph, unless otherwise posted.



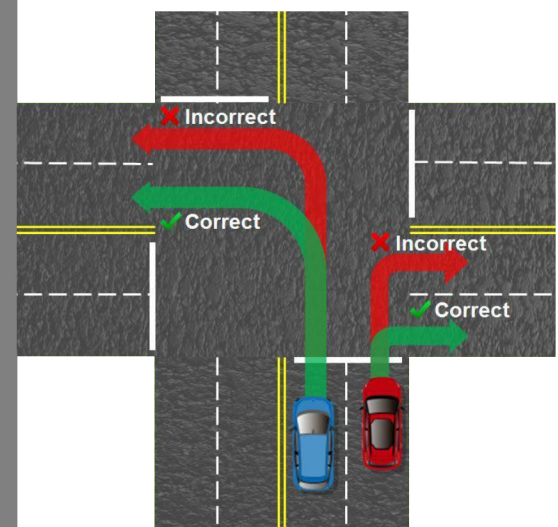
Know your Right-of-Way! Is it your turn to go? Are you required to wait?



Staying in your lane means don't drive in someone else's lane, or up on the curb. You cannot drive your tires on the painted lane lines or in other lanes; not even just a little bit!

Left and Right Turns

- Signal at least 100ft before turning
- Slow down to 12mph just before turning
- Be sure to look and make sure it's clear
- Always turn into your assigned lane
- Avoid driving into someone else's lane!



Have questions about driving? Ready to take your test? We are here to help! Call us 7 days a week, 8am to 8pm.

206-207-5555
i5driving.com

Copyright © 2018 Luckybranches