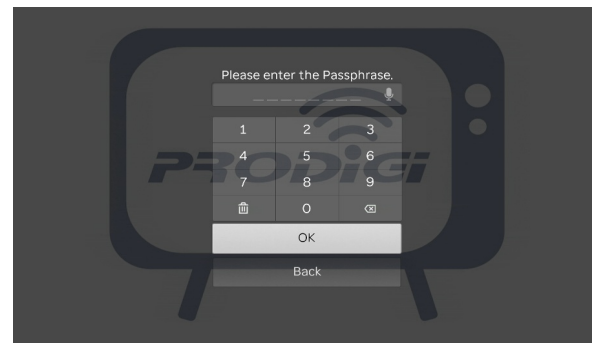
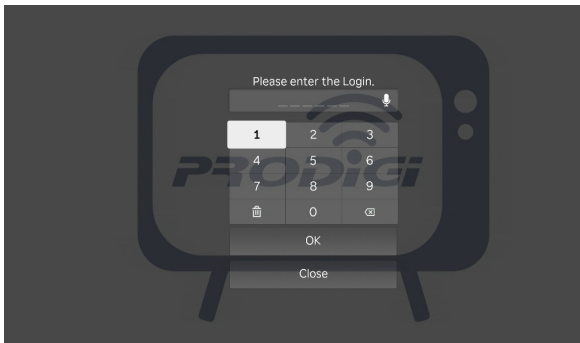
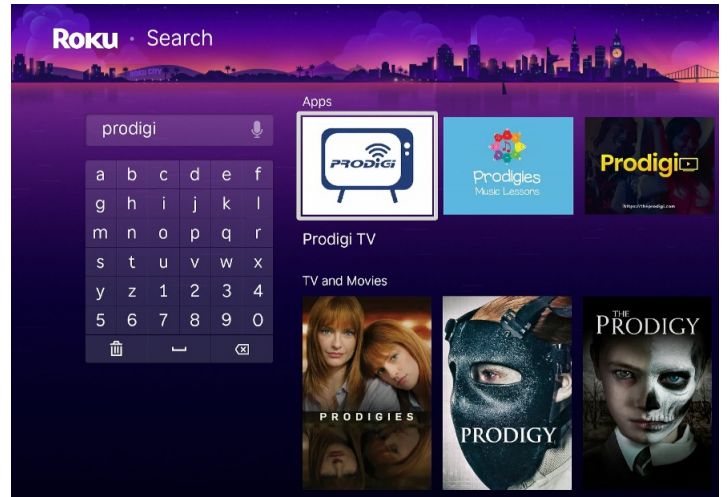




# Roku

## Adding ProdigyTV To Your Roku

To add ProdigyTV to your Roku Device, press the Home Button and navigate to search. Type In ProdigyTV and download it like you would any other app. From your Roku Device Home Screen a channel app should display in your channel list called ProdigyTV. Click on this channel to open it. The first time you open the channel you will be prompted for a Login and Passphrase, if you have not received this please contact the Prodigy Office.



## How to Use Your Remote



Pressing the Up, Down, Left and Right arrows will highlight different actions in the Guide, Search, recording, and Account options. Pressing OK on the remote will open the highlighted item. To return to the Home screen, press the Home button. Press the Back button that is to the left of the Home button to move back to the previous screen or open the Tab Bar.

# Watching ProdigyTV

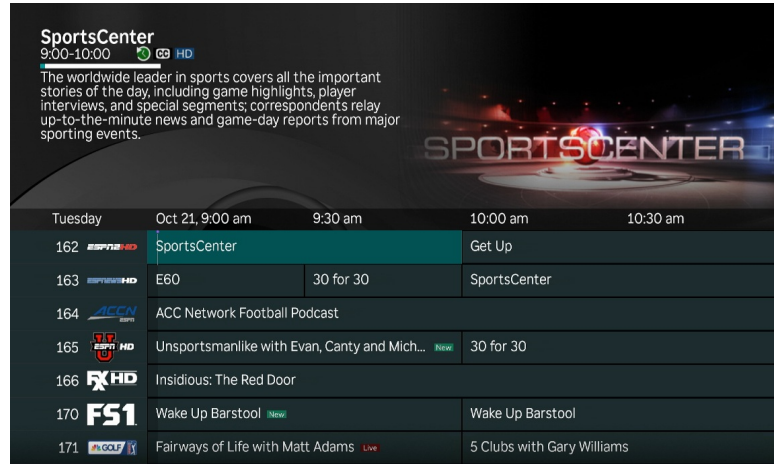
From the Home Screen, use the remote to highlight the ProdigyTV icon and press OK on your remote. This will open your on-screen Program Guide. To watch a channel, press the Up or Down arrows on the remote to any highlighted program and press the Play/Pause button to view the program

# Channel Surfing

While watching a currently airing program, press the Up or Down arrow of the remote to view the next higher or lower numbered channel.

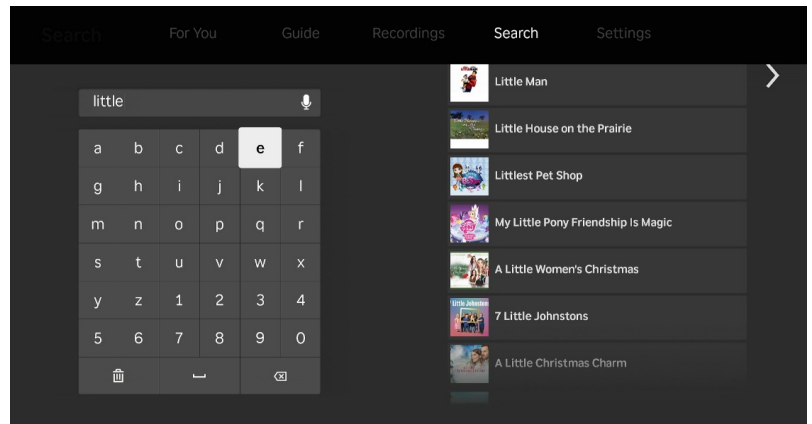
# Jump to Channel Feature

From the Program Guide, press the \* button on your remote and select the Jump to Channel option. A screen will display that allows you to enter a specific channel you want to watch, then highlight OK and Press OK on the remote to move to that channel number in the Program Guide.



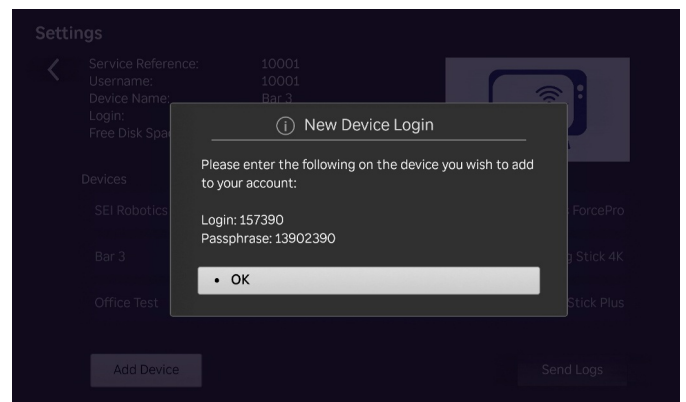
# Program Search Feature

You can use the Search Feature to find Live and Future programs. Go to Search in the Tab Bar. From here you can type in the name of a program by typing in the first few letters of a program. The results will be more specific if you type in more letters in the name of the program. Highlight a program and press OK on your remote. If it is a currently airing program, you can highlight Watch and press OK on your remote to view it. You also have the option to select record for adding this program to future recordings. See the Recording Your Program section of this guide for more information.



# Account Option- Add a New Device to ProdigyTV

Before you add a new device to this service, go to the Account in your Tab Bar from an activated device, use the Down arrow on the remote to scroll down, and highlight Add Device. Click OK on your remote to generate a Login and Passphrase for the new device. Follow the directions at the beginning of this guide for adding this service to your new Roku and use the displayed Login and Passphrase when you are prompted to activate this service.

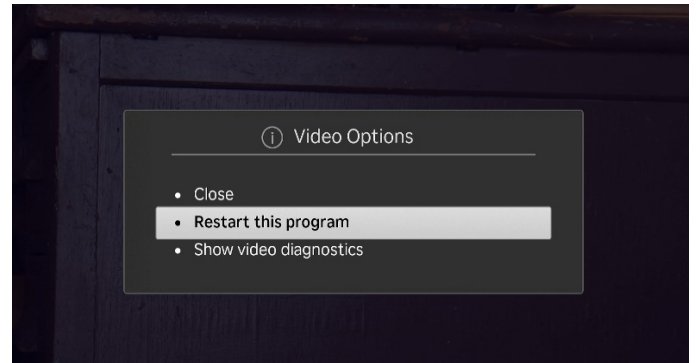


## Closed Captioning

While you are watching a program, press the \* button on your remote to open the options window. Use the Right Arrow of your remote to turn Closed Captioning on or off.

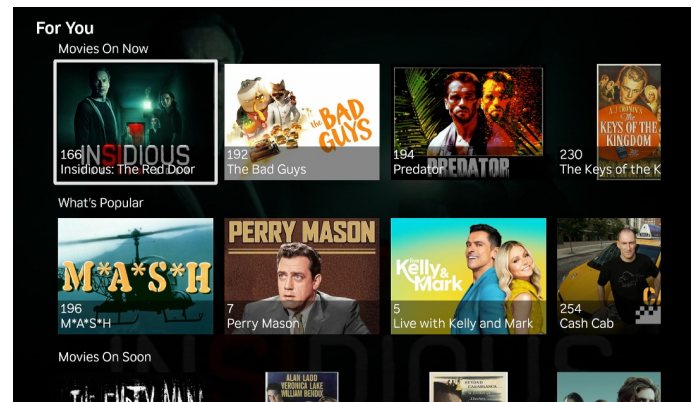
## Restart TV

This popular feature lets you go back to the beginning of any currently airing program that has the Restart Option. While you are watching a program that you want to Restart, press on the Right arrow of your remote which will pen a Video Options Screen. Choose Restart this program and press OK to Restart the program back to its beginning. There may be programs, because of programming restrictions, that don't allow for the Restart Function. Please contact our office if you have questions regarding this.



## For You Feature

This feature is "For You" if you prefer a poster view format instead of traditional channel guide look. For You gives you quick access to Channels You've Watched, Channels Popular in Your Area, Movies on Now, Movies On Soon, and Recent Recordings. To access For You from the Program Guide, press the Back button on the remote to open the Tab Bar, and select the For You option. Use your remote to navigate and select what you would like to watch or record.

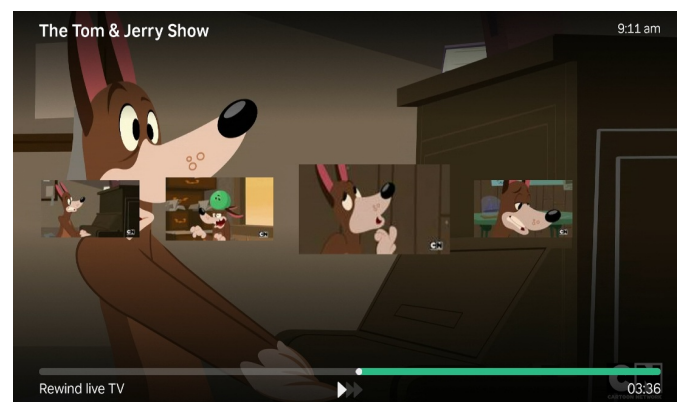


## Quick Guide

While you are watching a program, you can press the Left Arrow of your Roku remote, which will display a Quick Guide showing the last eight channels that you have watched on the left side of your TV screen. Use the up and down arrows on your Roku remote to scroll through your previously watched channels and press OK on a highlighted channel to switch to that channel. Press the Right arrow of your remote to exit the Quick Guide

## Pause, Fast Forward, and Rewind Features

There may be times when you want to pause or go back and see that exciting play in the game or fast forward through commercials during an in-progress or recorded program, you can press the Pause button to stop the program. Press the Fast Forward button on your remote to advance the program, and press Rewind to go back. The progress Bar lets you track your movement through a program with thumbnail displays, and the timer helps you to see how far you are from the end of the program.



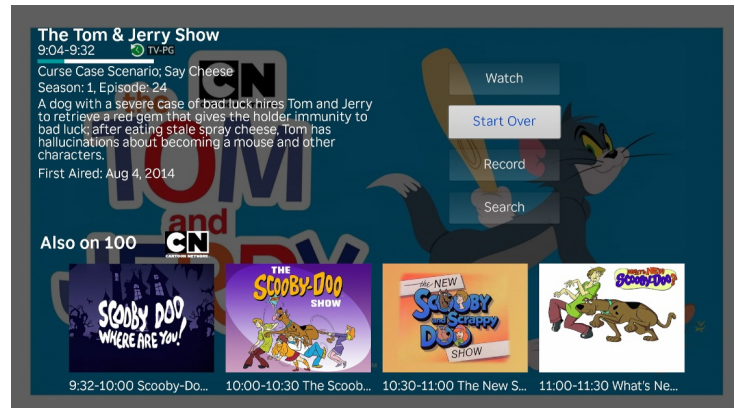
## On-Screen Guide Management

From a live program that you are watching, press the Back button on your remote to open the on-screen Program Guide, Use the Up or Down Arrows on your remote to scroll through the programs in the Guide, and press OK on a highlighted program to see detailed program information and your management options. The three options include Watch (for a currently airing program) Record, and Search.

To Watch, use your remote to highlight the Watch button and press OK on your remote.

To Record a program, highlight the record button and press OK on your remote. See the Record section of this guide to learn more about recording programs.

Choose the Search feature if you want to see future dates and times that this program will air that you may want to record. See the search option of this guide to learn more about Search options.



## Tab Bar

From the Program Guide, press the back button on your remote to open the Tab Bar. The Tab Bar allows you to scroll Left or Right to access For You, Guide, Recordings, Search, and Account options.



## Recording Your Programs

### Making a recording

When you select the Record option, a screen will display giving you three Record Options, a screen will display giving you three Record options: Record Single, for a one-time recording; Record Series (new episodes only); and Record Series (all episodes). Highlight your preferred Record option and press OK to set the recording. To further manage this recording, go to the Tab Bar and select recording.

### Watching your Recording

Recordings can be viewed from the Recordings option on your Tab bar, Select Recordings from the Tab Bar and press OK to open the Recordings screen, Here you will see Current, Upcoming, and Rules. Highlight Current and press OK to open your list of Current Recordings. Scroll through the list, highlight the program you want to watch an press the OK button. If there are multiple recordings, scroll and highlight the ones you want to watch and press OK on the remote to start watching the program.

## Record Using the Search Option

From any of your Search results you can scroll through the list of future air dates for a program; highlight Record and press the OK button on your remote to set a recording for the program. Use one of the options listed under the Making a Recording Section to make your selection.

## Managing Your Programs

### Current Recordings

To watch or delete current recordings from the Program Guide, press the Back button on the remote to open the Tab Bar, then use the Right arrow on the remote to highlight the Recordings option and press OK. Press the Down arrow on your remote to highlight Current, and then press OK on your remote to open your list of Current Recordings. This screen will display the list of your recorded programs. Scroll through to highlight a program, then press OK on your remote to open a recorded program, and press the OK button again to watch the program. To delete the program, press the Right arrow on your remote to highlight Delete and Press OK. You will receive a prompt to confirm deletion of the program. If there are multiple recordings of a program or series, scroll and highlight the one you want to watch and press OK on the remote to start watching the program.

### Upcoming Recordings

Use the Upcoming Recordings feature to view upcoming and feature recordings. From the Recordings screen, press the Down arrow of your remote control, any upcoming recordings will show up below current recordings. Scroll through the list to highlight an upcoming recording and then press OK on your remote to open the program info and airing time.

### Series Rules

Use the Rules feature to manage the episodes of a series that you want recorded automatically. From the Recordings Tab, press the Down arrow of your remote control, highlight Rules, and press OK to see a list of your series programs. Scroll through the list and highlight a series that you want to manage and press OK on your remote to open the series. At this point a Remoting-Rules screen will open. Highlight the option you want to edit and press OK on your remote. This will allow you to change how many episodes are kept, the type of episodes kept and the time the recording starts and stops.

