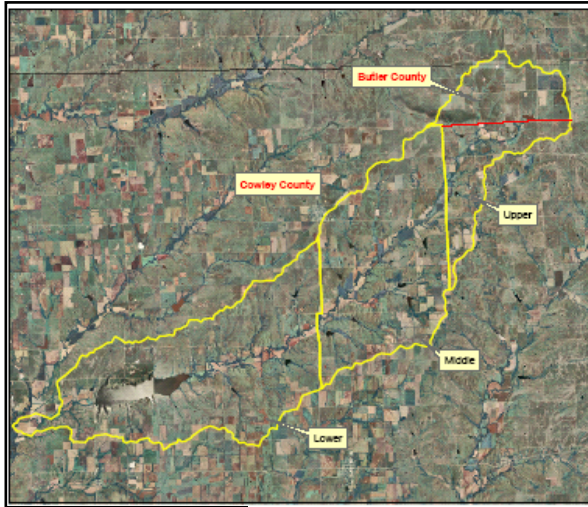


WATERSHED MAP



— Watershed Boundary
— County Line

N
▲

Watershed Characteristics

The Upper Timber Creek Watershed is a sub watershed of the Timber Creek Watershed that drains directly into the Winfield City Lake. The boundaries proper of the Upper Timber Creek Watershed are approximately 86.6 square miles in size and includes two counties. The watershed includes 55,487 total acres of which 51,387 acres are in Cowley County and the remaining 4,100 acres lie in Butler County. There are 32,747 acres of grassland and 18,417 acres of cropland in the watershed. The remaining 4,323 acres are devoted to woodland and miscellaneous land uses. The watershed also consists of 35.3 miles of sensitive riparian areas.



Now Entering
Upper Timber Creek Watershed

WATER QUALITY ZONE



For information on how you can implement these practices on your farm, contact:



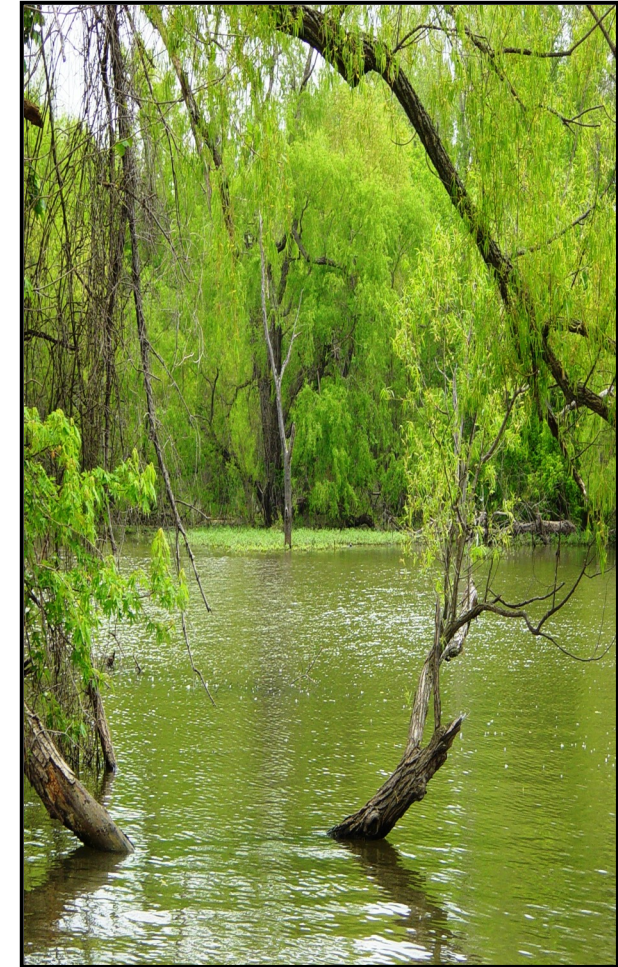
Cowley County Conservation District
Natural Resources Conservation Service

Address: 2118 E. 9th Suite B
Winfield, KS 67156
Phone: (620) 402-3107

cowleycoconservationdistrict@gmail.com

Financial assistance for this project has been provided by the City of Winfield and WRAPS grant EPA Section 319 funds.

UPPER TIMBER CREEK WATERSHED



WATER QUALITY PROJECT

UPPER TIMBER CREEK WATERSHED

Winfield City Lake



Water Supply

The Winfield City Lake is the main water supply for 60% of Cowley County.

Recreation

Thousands of people each year enjoy boating, swimming, fishing, hunting and camping in and around the lake.

Flood Control

The Upper Timber Creek Watershed District # 38 built a complete flood control system that includes not only the Winfield City Lake but also 32 flood control dams throughout the watershed. The completed flood control system provides 14,324 acre feet of flood water detention storage and 3,832 acre feet of sediment storage. The lake itself furnishes 9,037 acre feet of recreation storage, 9,038 acre feet of municipal water supply in addition to 5,000 acre feet of floodwater detention capacity and 1,925 acre feet of sediment storage capacity.

Identified Problems

One identified problem is the runoff of excessive nutrients into the water causing excessive algae production. This causes the drinking water to produce a fowl odor which costs thousands of dollars each year to treat.

Another identified problem is increased siltation. Silt carries with it herbicides and pesticides that are harmful to the lake. Siltation is also responsible for reduced water detention storage and increased cost associated with the treatment of the water.

Project Goal

To actively address water quality protection and restoration in the watershed area draining into the Winfield City Lake, while addressing conservation issues that impact the public water supply.

Objectives

1. Protect Winfield City Lake and its watershed from pollutants and siltation.
2. Reduce nutrients reaching streams from runoff.
3. Minimize pollution caused by organic waste from runoff.
4. Reduce soil erosion.
5. Improve wildlife habitat.
6. Reduce flood damage in critical areas.

Program Overview

The Upper Timber Creek Watershed's Cost-Share Program provides funds on a cost-sharing basis to assist landowners in the installation of soil and water conservation and pollution control practices. These practices are in the public interest and contribute to the protection and enhancement of water resources. These practices supplement resource management systems for sediment and erosion control and help achieve adequate water quality while assisting landowners by maintaining healthy and productive land.



Streambank Stabilization Project



Alternative Water Supply



Pond Development



Filter Strip

