

High Expansion Gauge Hanger

DESCRIPTION

The High Expansion Gauge or Instrument Hanger can be used to hang a subsurface device in a location with no landing nipple and can pass through smaller inside diameter tubing and then set in larger inside diameter tubing or casing. The tool can be run on the mechanical Running Tool or on a suitable explosive or electric setting tool.

When the setting tool is activated the Expanding Instrument Hanger slips securely grip the tubing and the setting tool shears the setting pin, releasing it from the Instrument Hanger. The Setting Tool and Setting Adaptor Kit are then returned to surface leaving the Instrument Hanger secured in the well.

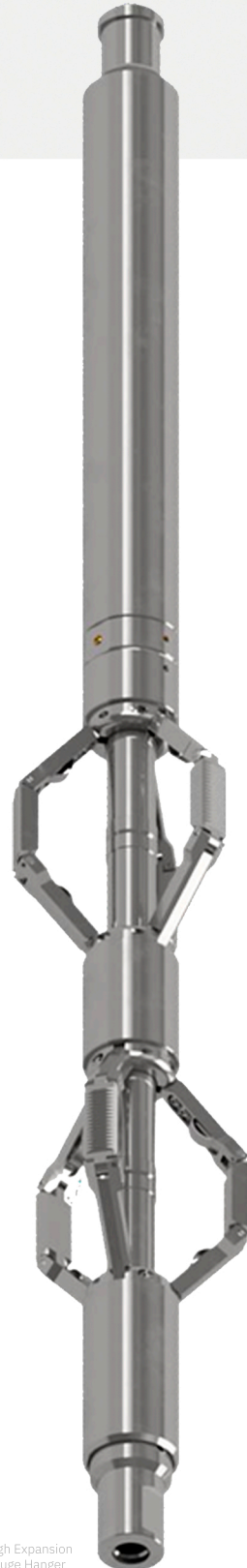
The hanger is released by latching the upper fish neck with an appropriate pulling tool and lightly jarring upwards to shear the release pins.

FEATURES AND BENEFITS

- Robust construction.
- Can hang a gauge in larger diameter tubing / casing with no landing nipple.
- It can be used to retain debris and prevent it moving up hole.
- Can hang a gauge in tubing below a restriction.
- Sprung loaded slips ensure the Expanding Instrument Hanger locks securely in the casing.
- Can be set with the purely mechanical High Expansion Gauge Hanger Setting Tool.
- It can be set up with an Explosive or Electric Setting Tool as required with suitable adapters.
- Retrieved with standard Slickline Pulling Tools

DEPLOYMENT AND RETRIEVAL

- EH Running Tool
- Powered Setting Tool
- Multi-Purpose Pulling Tool



High Expansion
Gauge Hanger

SPECIFICATIONS

DESCRIPTION	2.50" WL Expanding Gauge Hanger
DIMENSIONAL DATA	
Running OD	2.50"
Maximum Casing ID	6.00"
Fishing Neck Dia	1.75"
Lower Connection	15/16-10 UN Box
Length (M/U) 51.2"	51.2"
PERFORMANCE DATA	
Tensile Rating	47,000 lbs
Flow Area 4.50" 11.6#	5.0 in ²
Flow Area 5.00" 15.0#	7.1 in ²
Flow Area 5.50" 17.0#	10.0 in ²
Flow Area 6.63" 20.0#	18.3 in ²
Shear Rating Arms Set	1300 lbs Each (Max 3)
Shear Rating Arms Release	1300 lbs Each (Max 4)
Shear Rating RT Release	10,100 lbs
MATERIAL SPECIFICATIONS	
Service	H2S
Body Material	41xx Steel 18-22Rc, 80KPSI Min Yield