

SD One ><

24" 36" 44"

**COMPACT
FLEXIBLE
FULL COLOR
SCAN UP TO E/A0**

ALL NEW!



COMPACT LARGE FORMAT SCANNER: FASTER, SMARTER, FULLY EQUIPPED



FADGI compliance. Together with Nextimage 7, SD One X exceeds FADGI 3-star compliance.

Exceptional value in a compact design

SD One X delivers speed, flexibility, and outstanding value in a lightweight 24", 36" or 44" format. User-friendly, with an integrated control panel for simple operation.

Efficient and cost-effective

An essential office scanner at a highly competitive price. Handle large-format maps, engineering, and construction drawings in-house to reduce costs, save time, and free up space.

Copy, share and collaborate

Designed for simplicity and precision, SD One X ensures reliable results, even on your most demanding projects.

Versatile document capture

Digitize architectural, engineering, and construction documents directly to your project folders in standard formats using Nextimage 7.

Powered by X-Rite®

The ICC color profile in Nextimage 7 is powered by X-Rite®.

Full color

SD One X supports full color scanning.

All popular file formats

Supports all popular scan file formats – like PDF, TIFF and JPEG.

Green

Energy Star® certified device.

Need to move the scanner about?

Don't worry, SD One X is light enough for one person to carry.

LIGHTWEIGHT AND AFFORDABLE

SEE MORE: contex.com/sdonex

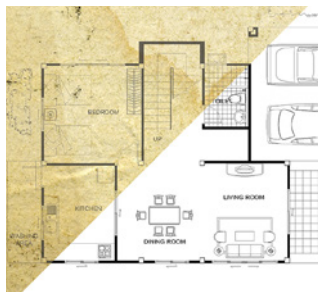
 **contex**®
WHEN IMAGING MATTERS

	SD ONE X 24		SD ONE X 36	SD ONE X 44
Optimized for			Convenience (occasional use)	
Maximum scan width	24 inches (610 mm)		36 inches (914 mm)	44 inches (1118 mm)
Maximum media width	26.6 inches (676 mm)		39.9 inches (1014 mm)	47.2 inches (1200 mm)
SCAN SPEED¹ (INCH/SEC) At maximum scan width of scanner				
200 dpi RGB color			4 ips	
200 dpi grayscale/monochrome			8 ips	
OTHER SPECIFICATIONS				
Optical resolution			600 dpi	
Maximum resolution			9600 dpi² (interpolated)	
CIS technology			Context CleanScan CIS with dual-sided LED lighting	
Total number of pixels	32400 pixels		54000 pixels	64800 pixels
Context CFR³			Yes	
Maximum media thickness			0.03 inch/0.75 mm	
Accuracy			0.1% +/-1 pixel	
Data capture			48-bit color, 16-bit grayscale	
Data output			Up to² 48-bit color, 16-bit grayscale	
Color space			Adobe RGB, Device RGB, sRGB	
Connectivity			USB 3.0 with xDTR3	
Operating system			Windows 11 64-bit, Windows 10 64-bit, Windows Server 2025 Standard Edition	
Included software⁴			Nextimage 7 trial (incl. TWAIN driver, excl. licence)	
Optional software⁴			Nextimage Scan & Archive, Nextimage Repro	
File formats			TIF, JPG, PDF, PDF/A, DWF, CALS, BMP, JPEG-2000(JP2), JPEG2000 Extended (JPX), TIF-G3, TIF-G4 and others	
Power consumption (Ready/Power save/Scanning)			5.5W / 0.5W / 14W (external power supply), ENERGY STAR® Certified	
Power supply			100 V / 230 V / 240 V, 60/50 Hz	
Weight and dimensions (LxWxH)	20.9 lbs. (9.5 kg) 32.4x9.1x4.9 inches (823x230x124 mm)	28.4 lbs. (12.9 kg) 45.7x9.1x4.9 inches (1162x230x124 mm)	32.2 lbs. (14.6 kg) 53.1x9.1x4.9 inches (1348x230x124 mm)	
Optional scanner stands	Low stand, height: 31.2 inches (793 mm) High stand, height: 41.1 inches (1043 mm)		Low stand, height: 33.1 inches (841 mm) High stand, height: 48 inches (1220 mm)	
CERTIFICATION AND WARRANTY				
Safety	IEC 62368-1. Certificates: cUL (USA and Canada), CE (Europe), CCC (China), EAC (Russia, Kazakhstan, Belarus)			
Electro Magnetic Compatibility (EMC)	Compliant with Class A requirements, including FCC rules (USA), ICES (Canada), EMC Directive (EU), CCC (China), VCCI (Japan), EAC (Russia, Kazakhstan, Belarus)			
Environmental	ENERGY STAR® Certified, WEEE (EU), RoHS (EU) and REACH (EU)			
Country of Origin	Designed and engineered in Denmark. Manufactured in China			
Warranty	2-year warranty and fast, easy parts replacement			
In the box	Scanner (24", 36" or 44" model), 2 m USB cable, external power supply, TWAIN driver and installation software, and user guides in PDF on USB, installation guide, calibration poster, calibration sheet and cleaning cloth			

1. Scanning speeds based on 24" wide document. Context recommends Intel Core i5, AMD Ryzen 5 5500, or better 64-bit processors, 16 GB RAM and SSD SATA drive, min. USB 3.0 or Gigabit Ethernet.
2. Requires optional Nextimage 7 software
3. Color Fringe Removal (CFR) is an advanced Context patented filtering technology designed to remove the fringes inherent in CIS strobing scanning devices
4. Context applications create industry standard raster file formats which can be used in any CAD or GIS application

All trademarks remain the property of their respective holders, and are used only to directly describe the product being provided. Their use in no way indicates any relationship between Context and the trademarks holders.

Scan, enhance, file and share with Context SD One X large format scanner



Improve your originals
SD One X is a fully featured scanner. Pair it with Nextimage 7 for the complete scanning solution.



Flexible control panel
Scanner operation is easy with the intuitive SD One X control panel.

HP ready **Océ** ready **EPSON** ready **Canon** ready

Context solutions are compatible with all leading large-format printers.
See the full list at context.com/nextimage-supported-printers



Drafting Clinic
Canada Limited
Wide Format Imaging Solutions

context
WHEN IMAGING MATTERS

1500 Trinity Drive, Mississauga, Ontario L5T 1L6 Phone: 800.567.3222 Email: sales@dccltd.ca Web: www.dccltd.ca