


GRACE GARDENS
FUNERAL HOME
& CREMATORIUM
8220 Woodway Drive
Waco, Texas 76712
254-741-0404
www.gracegardensfh.com



“Where Special Memories Live On”

Effective Date of Price List: December 1, 2023
Prices Are Subject to Change without Notice

GENERAL PRICE LIST
CASKET PRICE LIST
OUTER BURIAL CONTAINER PRICE LIST
URN PRICE LIST

*It's our purpose to give thoughtful service, to guide you,
and to lighten your burden.*

We feature an On-Site Crematory for your peace of mind.

There will be a 3% convenience fee for all credit card payments.

TRADITIONAL SERVICES

Traditional Church or Chapel Funeral

\$5,145

- 24-hour services of funeral directors and staff to help you and your family; planning and directing the funeral and disposition; overhead; coordinating with cemetery or crematory,
- administrative staff to file paperwork, permits and required legal documents,
- removal, bathing, embalming and other sanitation and care of the deceased,
- dressing, casketing, and cosmetizing, arranging stateroom,
- use of our spacious facilities and greeting staff for viewing / visitation, including our Offices, Arrangement Room, Living Room, Family Room, and Lounge,
- use of Grace Gardens' beautiful 230-seat chapel for the funeral service; or staff and equipment for a service held at your church,
- funeral coach and flower car / utility vehicle within a 25 mile radius,
- handling flowers, assisting your friends and family at visitation and services,
- posting the service and visitation schedule, color photograph and obituary on our own website with a place for your friends to send and view email memories and condolences to you.

Traditional Graveside Funeral

\$4,845

- 24-hour services of funeral directors and staff to help you and your family; planning and directing the funeral and disposition; overhead; coordinating with cemetery or crematory,
- administrative staff to file paperwork and required legal documents,
- removal, bathing, embalming and other sanitation and care of the deceased,
- dressing, casketing, and cosmetizing, arranging stateroom,
- use of our spacious facilities and greeting staff for viewing / visitation, including our Offices, Arrangement Room, Living Room, Family Room, and Lounge,
- equipment and staff for the full graveside service,
- funeral coach and flower car / utility vehicle within a 25 mile radius,
- arranging details at the cemetery, setting-up equipment, greeting your friends and guests,
- posting the service and visitation schedule, color photograph and obituary on our own website for your friends to send email condolences to you.

CREMATION PACKAGES

Cremation with Funeral Service and Visitation \$5,545

- Removal, embalming, cosmetizing, and sanitary care of the deceased, and placement into a casket (See note below about using our rental casket),
- Visitation and viewing for your family and friends the night before the service,
- Assistance of our staff, use of our facilities, handling paperwork, filing death certificate,
- Setting up and conducting a complete funeral service in our chapel or your church,
- Care and arranging of floral arrangements and tributes,
- Placement of the cremated remains into a temporary container or urn you can purchase.
- Included is our beautiful ceremonial rental casket in Oak, which also includes the required cremation insert. For an additional \$150, we have an accommodation ceremonial casket in Cherry. Both shown on page 11.
- Posting the service and visitation schedule, color photograph and obituary on our own website for your friends to send email condolences to you.
- Crematory fee.

Cremation with Memorial Service and Visitation \$3,870

- Removal and care of the deceased, and placement into a cremation container,
- Placement of the cremains into a temporary container or urn you can purchase,
- Handling paperwork, filing death certificate, and assistance of our staff.
- Visitation for your family and friends the night before the service,
- Setting up and conducting a memorial service in our chapel or church, with music.
- Posting the service schedule, color photograph and obituary on our own website for your friends to send email condolences to you.
- Crematory fee.

Cremation with Memorial Service \$3,420

- Removal and care of the deceased, and placement into a cremation container,
- Placement of the cremains into a temporary container or urn you can purchase,
- Handling paperwork, filing death certificate, and assistance of our staff.
- Setting up and conducting a memorial service in our chapel or church, with music.
- Posting the service schedule, color photograph and obituary on our own website for your friends to send email condolences to you.
- Crematory fee.

Cremation with Memorial Visitation or Private Family Viewing \$3,095

- Removal and care of the deceased, and placement into a cremation container,
- Placement of the cremains into a temporary container or urn you can purchase,
- Handling paperwork, filing death certificate, and assistance of our staff.
- Setting up and conducting a memorial visitation in our chapel or church, with music OR providing a time for family only to view without embalming in a private viewing room.
- Posting the visitation schedule, color photograph and obituary on our own website for your friends to send email condolences to you.
- Crematory fee.

*All cremation packages include a \$325 Package Discount.

GENERAL PRICE LIST

These prices are effective December 1, 2023 but are subject to change without notice. The goods and services shown below are those we can provide to our customers. You may choose only those items you desire. (However, any funeral arrangements you select will include a charge for our basic services and overhead.) If legal or other requirements mean you must buy any items you did not specifically ask for, we will explain the reason in writing on the statement we provide describing the funeral goods and services you selected. Please note that there may be charges for items such as cemetery fees, flowers, and newspaper notices.

SERVICES OF FUNERAL DIRECTOR AND STAFF \$2,295

Our professional service charge includes but is not limited to consultation with family and clergy, arrangement and direction, desired preparation, and filing of necessary notices, authorizations and consents, and other services and attendance prior to, during and following the funeral including coordination with those providing other portions of the funeral (cemetery, crematory, florist, vault companies, musicians, etc.). Also included in this charge are overhead expenses relative to our facility such as insurance, maintenance and utility expenses, administrative costs, and equipment and inventory expenses. This fee for our services will be added to the total cost of the funeral arrangements you select. (This fee is already included in our charges for direct cremation, immediate burial, forwarding and receiving of remains.)

EMBALMING \$625

Embalming is not required by law. Embalming may be necessary, however, if you select certain funeral arrangements, such as a funeral with visitation. If you do not want embalming, you have the right to choose an arrangement which does not require you to pay for it, such as direct cremation or immediate burial.

OTHER PREPARATION OF BODY \$275

This service includes the usual cosmetology, dressing and casketing of the body, or the washing, disinfecting and casketing of the remains if there is no embalming at the family's request.

Refrigeration/Shelter of Remains (per day)	\$75
Special care of autopsied remains	\$250
Special care of remains for organ, tissue, or bone donation	\$250
Special care to dress and bathe unembalmed remains	\$250

FACILITIES AND EQUIPMENT

Use of Facilities & staff supervision for evening visitation (4-6 / 5-7 / 6-8)	\$450
Use of Facilities & staff supervision for day visitation (1 hour prior to services)	\$250
Use of Facilities for funeral ceremony or memorial service	\$775
Staff supervision in facility other than funeral home	\$775
Use of equipment and staff for graveside services	\$475
Rosary or prayer service (facility other than funeral home)	\$450
Rosary or prayer service (funeral home chapel)	\$450
Private room for family viewing of unembalmed remains	\$150
*Additional Charge for Sunday Funeral or Memorial Services	\$300

AUTOMOTIVE EQUIPMENT (25 mile radius of Waco; additional miles above 25 are \$3.00 per mile one-way).

Transfer of remains to funeral home	\$350
Limousine (dependent upon availability)	\$500
Funeral Coach (Hearse)	\$375
Flower vehicle	N/C
Cross country mileage per mile one-way	\$3.00
Transportation to and from a Metroplex Airport	\$300
Transportation to and from Austin Airport	\$300
Overnight stay on road trip (one employee for one night)	\$350

MERCHANDISE

Stationery package (Value) **\$250**
Includes one each of the following, additional can be purchased. Items can also be purchased ala carte.

Register Book	\$95
Memorial Folders (150)	\$75
Acknowledgement Cards (50)	\$25
Tribute Video on USB or DVD	\$25
Online Memorial Tribute	\$50
Temporary Grave Marker	\$40
Crucifix (First furnished without charge)	\$35
Prayer Cards (100)	\$35
Music/Streaming	N/C

ADDITIONAL ITEMS

Photo Enlargement	\$35
Additional DVD	\$15
Additional Folders (per 100)	\$50
Additional Prayer Cards (per 50)	\$25
Additional Crucifix	\$25
Additional Register Book	\$75
Local Death Certificate Pick Up	\$20
Handling and Transferring of Cremated Remains (USPS)	\$150

CHILD SERVICES (age 12 and under) **N/C**

Professional Services, and Cremation or Graveside Services are no charge.
Cost of Merchandise and Cash Advance items (including but not limited to: casket, vault, urns, jewelry, memorial items, death certificates, cemetery property, opening and closing of the grave, police escorts, flowers) will be charged.

Stationary Package	\$95
Visitation	\$200
Memorial Service or Funeral Service	\$395

SPECIAL SERVICES

Forwarding of remains to another funeral home **\$3,395**

Our charge includes basic services of funeral director and staff, removal of remains, necessary authorizations, embalming and other preparation of remains, receptacle for non-casketed shipping, and transportation to DFW or Austin airport. This does not include the airline's shipping charges, visitation, rites or ceremonies or newspaper obituary costs.

Receiving of remains from another funeral home **\$2,745**

This includes services of our funeral director and staff, transfer of remains from DFW or Austin airport, and transportation of remains to a local cemetery. This charge does not include visitation, rites or any ceremonies.

Disinterment **\$2,295**

This is our professional charge for securing permits, arranging disinterment, state health department fee (\$25), etc. Additional charges may include the opening and closing of the grave at disinterment site, container, the opening and closing of the grave at interment site, mileage, cemetery fees, etc.

Immediate Burial with minimum casket **\$4,890**

Our charge for an immediate burial without ceremony, funeral rites, or any other rituals at the funeral home, gravesite, or elsewhere includes removal and temporary shelter of remains, transportation to cemetery (40 mile radius) and necessary services of staff and authorizations. **Embalming if desired, funeral rites or rituals, and cemetery charges are not included in this price.**

Immediate burial with container provided by purchase **\$2,670**

Immediate burial with casket/alternative container selected from our funeral home (in addition to the price of the casket/alternative container) **\$2,670**

CREMATION SERVICES

If you want to arrange a cremation, you may use our alternative container. Alternative containers encase the body and can be made of materials like fiberboard or composition materials (with or without an outside covering). The containers we provide are cardboard cremation containers. Direct Cremation includes: Professional Services, removal, and crematory fees, care of the deceased, and placement into a cremation container, placement of the cremains into a temporary container or urn you can purchase, handling paperwork, filing the death certificate, and assistance of our staff; immediate family only may have a brief viewing if requested.

•Direct cremation with an alternative container provided by the Funeral Home ~ includes a \$625 discount. **\$2,345**

•Direct cremation with a purchaser supplied container **\$2,270**

•Direct cremation with a casket purchased from our showroom **\$2,270**

•Expedited Scheduling of Cremation; when available **\$400**

•Alternative Containers **\$75 to \$925**

•Crematory fee **\$325***

***Additional tiered crematory fee starting at 301 pounds** **\$650 to \$1350**

Casket Price List

These prices are effective as of December 1, 2023, but are subject to change without notice.

CASKETS – Described on the following pages in detail. **\$2,295 to \$6,395**
Grace Gardens Funeral Home offers a full range of beautiful wood and metal caskets at very competitive prices for all families.

OUTER BURIAL CONTAINERS **\$1095 to \$4,995**
Grace Gardens Funeral Home offers a full range of concrete and metal grave liners and vaults to protect the casket or Urn in the grave.

Larger-sized Caskets Also Available**

Bennet – Oak in walnut matte finish - with rosetan crepe 27” wide **\$3,295** 29” wide **\$3,495**

Yale – Softwood poplar in gloss -with beige crepe interior 31” wide **\$3,395**

Extra* – 18 gauge steel in several colors, 29” wide Gasketed - \$2,895 Non-gasketed **\$2,795**

** Larger sizes may be available for an extra cost.*

*** Depends on availability of the particular casket*

DISCLAIMER OF WARRANTIES: Grace Gardens Funeral Home makes no representations or warranties regarding the caskets listed. The only warranties expressed or implied, granted in connection with the caskets are the express written warranties, if any, extended by the manufacturers hereof. Grace Gardens Funeral Home hereby expressly disclaims all warranties, expressed or implied, relating to the caskets, including, but not limited to, the implied warranties of merchantability and fitness for a particular purpose.

Wood Caskets Available from Grace Gardens Funeral Home

Please ask if you do not see a casket that meets your specific need, such as color, design, style, or price. We have many other selections available.

***About Our Wood Caskets...** compares to the rich, warm glow of well-crafted hardwood. From the elegance of solid hardwood to the simplicity of hardwood veneer, this assortment from Grace Gardens Funeral Home shows a variety of woods and finishes that cater to all tastes and prices.*



Winston - Cherry
Satin Able / Shaded Finish,
Arbutus Velvet Interior - \$6,395



Southern/Sovereign - Pecan
Satin Finish,
Ivory Majestic Velvet - \$5,195



Clearwood - Maple
Satin Light Colonial Finish,
Rosetan Crepe Interior - \$5,095



American Barnwood - Oak
Satin Timber Finish,
Natural Cotton Interior - \$4,395



Fredrick - Poplar
Satin Golden Ginger/Shaded Finish,
Ivory Basketweave Interior - \$4,095



Endicott - Poplar Veneer
Gloss Cambridge Finish,
Rosetan Crepe Interior - \$3,295



Ashford - Poplar Veneer
Satin Medium Walnut Finish
Rosetan Crepe Interior - \$3,095



Prince - Poplar Veneer
Light Satin Finish
Rosetan Crepe Interior - \$2,895

Gasketed Metal Caskets Available from Grace Gardens Funeral Home

Stainless Steel - -\$5,895

Newport: Brushed Topaz/Golden Fawn Finish

Almond Velvet Interior

Regency: Dark Brushed Finish

Silver Velvet Interior



Garrison ~18 ga. Steel ~ \$4,295

Cashmere Finish – Ivory Basketweave Interior



Garden 843-18ga Steel ~ \$4,195

Hunter Green Polished Finish with Rose Tan Crepe Interior

Midnight Blue Polished Finish with Rose Tan Crepe Interior

White Sand Polished Finish with Rose Tan Crepe Interior

Bordeaux Brushed Plum Gold Finish with Cream Basket Weave Interior



Pierce-18ga Steel- \$3,995

Cabernet or Cashmere Finish

Basketweave Interior

Memory Mosaic



Gasketed and Non Gasketed Metal Caskets



Patriot-18ga Steel – Ebony Finish with Ebony Cotton Twill Interior
Freedom-18ga. Steel -Navy Finish with Navy Interior - \$3,895



Embrace-20ga Steel- \$3,295
Midnight Blue Finish with Cream Basket Wwave Interior
Light Gunmetal Finish with Ivory Basketweave Interior
White Sands Finish with Cream Basket Weave Interior
Antique White Finish with Ivory Basket Weave Interior
Venetian Bronze/Gold Finish with Cream Basdket Weave Interior



Valencia - 20ga Steel - \$2,895
Ebony Finish with WhiteCrepe Interior
London Blue Finish with Blue Crepe Interior
Light Orchid Finish with Pink Crepe Interior
Silver Finish with White Crepe Interior
White Finish with Moselle Crepe Interior
Atumn Haze Finish with Moselle Crep Interior



Bradford - 20ga Steel, NON-GASKETED - \$2,295
Spruce Blue Finish with Blue Crepe Interior
Black Finish with White Crepe Interior
Copper Finish with Rosetan Crepe Interior
White Finish with White Crepe Interior
White Finish with Pink Crepe Interior
Orchid Finish with Pink Crepe Interior
Silver Finish with White Crepe Interior



Alternative Containers

Cremation container; cardboard, no covering or interior (meets minimum requirement of the crematory) -----	\$75
Combination casket/shipping container -----	\$300
Air tray (used in conjunction with a casket for shipping purposes) -----	\$300
Oversize Air Tray -----	\$375
Vinyl disaster pouch-----	\$195
Ziegler case, metal shipping container, sealed -----	\$625

Ceremonial Casket,
Norwood OAK, Rosetan crepe interior
shown below, with required cremation insert----- \$775



Accommodation Ceremonial Casket,
Gatewood, CHERRY, with Almond velvet interior
shown below, with required cremation insert----- \$925



Outer Burial Container Price List

These prices are effective as of December 1, 2023, but are subject to change without

A casket is commonly considered the final resting bed of a loved one. However, caskets are not designed to support the weight of the surrounding soil. Burial vaults are outer enclosures designed to support the weight of the soil and cemetery equipment. A burial vault should offer you peace of mind.

State or local law does not require that you buy a container to surround the casket in the grave; however, some local cemeteries require that you have such a container so the grave will not sink in. Either a concrete or steel grave liner or a burial vault will also satisfy these requirements.



Concrete Non-sealing Grave Liner – The concrete liner is placed into the grave. After the service, the casket is lowered into the liner, and then the one-piece lid is positioned on top of the liner. This helps support the weight of the surrounding soil and protects the casket. This is the minimum required at both Waco Memorial Park and Chapel Hill Cemetery. \$1095

Concrete Wilbert Monticello vault -- Approximate weight 2,500 lbs (Shown below) \$1,795
 Concrete Wilbert Continental vault (thicker concrete walls and lid) \$1,995

This sealing vault has a double wall construction: Steel reinforced concrete with a seamless, ribbed Durapreme lining.



The exterior is a hand-coated exterior with a personalized nameplate and symbol placed on the lid. The price includes transporting the vault to the cemetery, set-up by the vault company, and vault personnel handling the actual sealing and lowering of the vault after the service ends.

OTHER CONCRETE SEALING VAULTS AVAILABLE

- **Premium concrete vault, double lined, plastic / stainless steel -----** \$3,295
- **Premium concrete vault, double lined, plastic / copper -----** \$3,995
- **Premium concrete vault, double lined, plastic / bronze -----** \$4,995

Steel Burial Containers Price List

These prices are effective as of December 1, 2023 but are subject to change without notice.

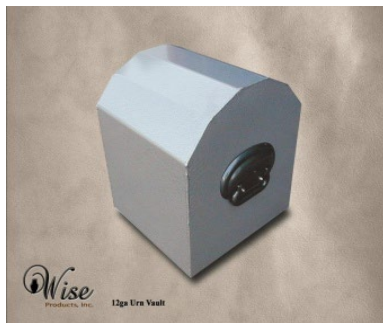
- 13 gauge non-sealing steel grave liner, brown exterior color \$1095
This steel grave liner supports the weight of the surrounding soil and protects the casket. It does not seal. This meets the minimum grave container requirements for both Waco Memorial Park and Chapel Hill Cemetery, both located on Interstate 35 in Waco.
- 10 gauge galvanized steel Clark vault (as seen in selection room) \$2,695



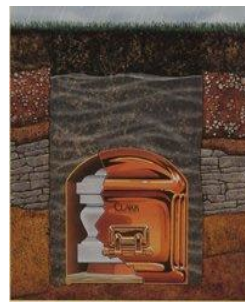
12 gauge steel Clark Economy vault – \$1,595



12 gauge steel Clark standard vault - \$1,795
Coppertone, silvertone, or white



Wise 12 gauge Urn Vault - \$425
Polymer Urn Vault (not pictured)- \$225



Vaults help protect the casket from water and the weight of the grave dirt (about 1 ton) or cemetery tractors from damaging the casket.

Monuments - Grace Gardens Funeral Home offers a large variety of monuments for a lasting memorial to your loved one. Our full monument display at the funeral home includes a large variety of markers available in many sizes, colors, styles and prices. We also have a collection of artwork samples to customize the front of your marker at no extra charge. Call us at 741-0404 for details.



Urn Price List

*These prices are effective as of December 1, 2023 but are subject to change without notice.
Standard keepsakes \$45, Cloisonne keepsakes \$75, Hearts \$75, Stands \$10*

Blush Elite Cloisonne \$425



Devotion Chest \$425



Nora Butterfly Cloisonne \$425



Old Glory \$375



Nora Rose Cloisonne \$425



Celtic Cross \$275



Purple Shell \$275



Satin Red \$275



Mossy Oak \$275



Monterey Blue \$275



Elite Onyx/Violet \$275
*Onyx not pictured



Mother of Pearl \$250



Honey Brown Chest \$250



Classic or Slate Flag \$250



Classic Bronze or Pewter \$195
child \$125



Falling Leaves \$195



Integral \$195



Rosewood Chest \$125
With engraving \$175



Assorted Marble Urns

- Chest \$325
- Adult \$275
- Medium \$195
- Child \$150
- Clock \$125
- Memento \$95
- Keepsake \$55
- Candy Dish \$65
- Candle \$45



NOTES: