

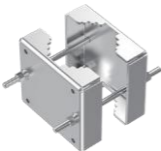







Products



Accessories

			
Bullet Bracket	PTZ Bracket	Pole Bracket	Corner Bracket
			
Glands	Flexible Conduit	Junction Box	Washing Tank

Application Scenarios



Oil Refining Plants



Chemical Plants



Oil & Gas Stations



Flour Mills



Ports



Oil Gas Exploitation



DSI Benelux B.V.

Bolderweg 2b | 1332 AT Almere | The Netherlands

+31(0)85-0044275 info@dsibebelux.nl

©2024 DSI/ Sunell Technology Corporation. All rights reserved.
The specifications and descriptions of products and services contained in this catalogue were correct at the time of publishing. Inner Range reserves the right to change specifications or withdraw products without notice.



Explosion-proof
Cameras



www.dsibenelux.nl

Key Features

High Quality Imaging

- Ultra HD
- Excellent low-light performance



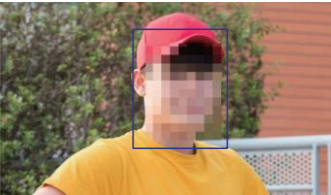
Intelligent Tracking

- Human/Vehicle
- Auto Tracking; Auto Focus



Edge AI

- IVS: Intrusion, Single Line Crossing, Double Line Crossing, Loitering, Wrong-way, Illegal Parking
- People counting



Face



Human



Vehicle



Smoke & Flame



Helmet & Safety Vest
(Optional)

High Protection Level

- 316L Stainless Steel
- IP68



Dual-certified

- Ex d II C T6 Gb / Ex tD A21 IP68 T80°C W



Products

(Fiber-optic Optional)

Optical			
Bullet		IR Bullet	
	SNCHP8650CDN <ul style="list-style-type: none">• 2592×1944 (5MP) @ 25/30fps• 5.3 to 159mm, 30x optical zoom• Human/Vehicle/Smoke & Flame• 100 VAC to 240 VAC• IP68		SNCHP8650CDR <ul style="list-style-type: none">• 2592×1944 (5MP) @ 25/30fps• 5.3 to 159mm, 30x optical zoom• 100m IR (328 ft)• Human/Vehicle/Smoke & Flame• 100 VAC to 240 VAC• IP68
IR Bullet		Speed Dome	
	SNCHP8650EBR <ul style="list-style-type: none">• 2592×1944 (5MP) @ 25/30fps• 5.3 to 159mm, 30x optical zoom• 200m IR (656 ft)• Human/Vehicle/Smoke & Flame• 100 VAC to 240 VAC• IP68		SNIPS8652PCDN <ul style="list-style-type: none">• 2592×1944 (5MP) @ 25/30fps• 5.3 to 79.5mm, 15x optical zoom• Human/Vehicle/Smoke & Flame• Pan: 360° endless, Tilt: -10° to 90°• 100 VAC to 240 VAC• IP68
PT		IR PT	
	SNIPT8650PAN <ul style="list-style-type: none">• 2592×1944 (5MP) @ 25/30fps• 5.3 to 159mm, 30x optical zoom• Human/Vehicle/Smoke & Flame• Pan: 360° endless, Tilt: -90° to 90°• 100 VAC to 240 VAC• IP68		SNIPS8650PAR <ul style="list-style-type: none">• 2592×1944 (5MP) @ 25/30fps• 5.3 to 159mm, 30x optical zoom• 200m IR (656 ft)• Human/Vehicle/Smoke & Flame• Pan: 360° endless, Tilt: -90° to 90°• 100 VAC to 240 VAC• IP68
Thermal			
Bullet		Bi-spectrum PT	
	SNTPH6406DA SNTPH4203DA <ul style="list-style-type: none">• 640×512/400×300• Lens: 8/9/15/25/35/50 mm Human/Vehicle/Fire & Smoke• Temp. Pre-alarm & Alarm• Temp. Accuracy: ±2°C / ±2%• IP68		SNTPT6436PA SNTPT4233PA <ul style="list-style-type: none">• Thermal: 640×512/400×300, Lens: 8/9/15/25/35/50 mm• Optical: 2592×1944 (5MP) @ 25/30fps, 5.3 to 159 mm, 30x• 200m IR (656 ft)• Human/Vehicle/Smoke & Flame/Fire Spot• Temp. Pre-alarm & Alarm• Temp. Accuracy: ±2°C / ±2%• Pan: 360° endless, Tilt: -90° to 90°• IP68