

## JUB kemična industrija d.o.o.

Dol pri Ljubljani 28  
SI-1262 Dol pri Ljubljani  
Slovenia

Tel: 00 386 1 588 42 82 Fax: 00 386 1 588 42 50

e-mail: danijel.lisicic@jub.eu

website: www.jub.eu



### Agrément Certificate

12/4955

Product Sheet 1

## JUB EXTERNAL WALL INSULATION SYSTEMS

### JUBIZOL EPS ETERNAL WALL INSULATION SYSTEM

This Agrément Certificate Product Sheet<sup>(1)</sup> relates to the Jubizol EPS External Wall Insulation System, comprising white or grey expanded polystyrene (EPS) insulation boards, mechanically fixed, with supplementary adhesive, glass-fibre-reinforced basecoat and render finishes. It is suitable for use on the outside of external masonry walls in new or existing domestic and non-domestic buildings, with height and boundary restrictions.

(1) Hereinafter referred to as 'Certificate'.

#### CERTIFICATION INCLUDES:

- factors relating to compliance with Building Regulations where applicable
- factors relating to additional non-regulatory information where applicable
- independently verified technical specification
- assessment criteria and technical investigations
- design considerations
- installation guidance
- regular surveillance of production<sup>†</sup>
- formal three-yearly review.<sup>†</sup>

#### KEY FACTORS ASSESSED

**Thermal performance** — the system can be used to improve the thermal performance of external masonry walls and can contribute to satisfying the requirements of the national Building Regulations (see section 6).

**Strength and stability** — the system can be designed to resist wind loads experienced for a particular location, and have impact resistance. The resistance to impact is dependent on the system chosen (see section 7).

**Behaviour in relation to fire** — the system has a B-s1, d0 reaction to fire classification in accordance with BS EN 13501-1 : 2007 and its use is restricted (see section 8).

**Condensation** — the system can contribute to limiting the risk of interstitial and surface condensation (see section 11).

**Durability** — when installed and maintained in accordance with the Certificate holder's recommendations and the terms of this Certificate, the system will remain effective for at least 30 years. The durability can be extended to 60 years by using different fixings and by following a planned inspection and an effective maintenance schedule as described in sections 12 and 13.



The BBA has awarded this Certificate to the company named above for the system described herein. This system has been assessed by the BBA as being fit for its intended use provided it is installed, used and maintained as set out in this Certificate.

On behalf of the British Board of Agrément

Date of Third issue: 27 January 2022

Originally certificated on 16 November 2012

Hardy Giesler  
Chief Executive Officer

This Certificate was amended on 22 May 2024 as part of a transition of The BBA Agrément Certificate scheme delivered under the BBA's ISO/IEC 17020 accreditation. This Certificate was issued originally under accreditation to ISO/IEC 17065. Sections marked with the symbol † are not issued under accreditation. Full conversion to the ISO/IEC 17020 format will take place at the next Certificate review. The BBA is a UKAS accredited Inspection Body (No.4345). Readers MUST check the validity of this Agrément Certificate by either referring to the BBA website or contacting the BBA directly. Any photographs are for illustrative purposes only, do not constitute advice and must not be relied upon.

#### British Board of Agrément

Bucknalls Lane  
Watford  
Herts WD25 9BA

©2022

tel: 01923 665300  
clientservices@bbacerts.co.uk  
www.bbacerts.co.uk

## Regulations

In the opinion of the BBA, the Jubizol EPS External Wall Insulation System, if installed, used and maintained in accordance with this Certificate, can satisfy or contribute to satisfying the relevant requirements of the following Building Regulations (the presence of a UK map indicates that the subject is related to the Building Regulations in the region or regions of the UK depicted):



### The Building Regulations 2010 (England and Wales) (as amended)

<b>Requirement:</b>	<b>A1</b>	<b>Loading</b>
Comment:	The system can sustain and transmit wind loads to the substrate wall. See sections 7.1 to 7.12 of this Certificate.	
<b>Requirement:</b>	<b>B4(1)</b>	<b>External fire spread</b>
Comment:	The system is restricted by this Requirement. See sections 8.1 to 8.5 of this Certificate.	
<b>Requirement:</b>	<b>C2(b)</b>	<b>Resistance to moisture</b>
Comment:	The system provides a degree of protection against rain ingress. See section 10.1 of this Certificate.	
<b>Requirement:</b>	<b>C2(c)</b>	<b>Resistance to moisture</b>
Comment:	The system can contribute to minimising the risk of interstitial and surface condensation. See sections 11.2 and 11.4 of this Certificate.	
<b>Requirement:</b>	<b>L1(a)(i)</b>	<b>Conservation of fuel and power</b>
Comment:	The system can contribute to satisfying this Requirement. See sections 6.1 and 6.2 of this Certificate.	
<b>Regulation:</b>	<b>7(1)</b>	<b>Materials and workmanship</b>
Comment:	The system is acceptable. See sections 13.1 and 13.2 and the <i>Installation</i> part of this Certificate.	
<b>Regulation:</b>	<b>7(2)</b>	<b>Materials and workmanship</b>
Comment:	The system is restricted by this Regulation. See sections 8.1 to 8.5 of this Certificate.	
<b>Regulation:</b>	<b>26</b>	<b>CO<sub>2</sub> emission rates for new buildings</b>
<b>Regulation:</b>	<b>26A</b>	<b>Fabric energy efficiency rates for new dwellings (applicable to England only)</b>
<b>Regulation:</b>	<b>26A</b>	<b>Primary energy consumption rates for buildings (applicable to Wales only)</b>
<b>Regulation:</b>	<b>26B</b>	<b>Fabric performance values for new dwellings (applicable to Wales only)</b>
Comment:	The system can contribute to satisfying these Regulations. See sections 6.1 and 6.2 of this Certificate.	



### The Building (Scotland) Regulations 2004 (as amended)

<b>Regulation:</b>	<b>8(1)(2)</b>	<b>Durability, workmanship and fitness of materials</b>
Comment:	The system can contribute to a construction satisfying this Regulation. See sections 12, 13.1 and 13.2 and the <i>Installation</i> part of this Certificate.	
<b>Regulation:</b>	<b>9</b>	<b>Building standards applicable to construction</b>
Standard:	<b>1.1</b>	<b>Structure</b>
Comment:	The system can sustain and transmit wind loads to the substrate wall. See sections 7.1 to 7.12 of this Certificate.	
Standard:	<b>2.6</b>	<b>Spread to neighbouring buildings</b>
Comment:	The system is restricted by this Standard, with reference to clauses 2.6.4 <sup>(1)(2)</sup> , 2.6.5 <sup>(1)</sup> and 2.6.6 <sup>(2)</sup> . See sections 8.1 to 8.4, 8.6 and 8.7 of this Certificate.	

Standard:	2.7	Spread on external walls
Comment:		The system is restricted by this Standard, with reference to clause 2.7.1 <sup>(1)(2)</sup> . See sections 8.1 to 8.4, 8.6 and 8.7 of this Certificate.
Standard:	3.10	Precipitation
Comment:		The system can contribute to a construction satisfying this Standard, with reference to clauses 3.10.1 <sup>(1)(2)</sup> and 3.10.2 <sup>(1)(2)</sup> . See section 10.1 of this Certificate.
Standard:	3.15	Condensation
Comment:		The system can contribute to satisfying this Standard, with reference to clauses 3.15.1 <sup>(1)(2)</sup> , 3.15.4 <sup>(1)(2)</sup> and 3.15.5 <sup>(1)(2)</sup> . See sections 11.3 and 11.4 of this Certificate.
Standard:	6.1(b)	Carbon dioxide emissions
Standard:	6.2	Building insulation envelope
Comment:		The system can contribute to satisfying these Standards, with reference to clauses (or parts of) 6.1.1 <sup>(1)</sup> , 6.1.2 <sup>(1)(2)</sup> , 6.1.3 <sup>(1)(2)</sup> , 6.1.6 <sup>(1)</sup> , 6.1.10 <sup>(2)</sup> , 6.2.1 <sup>(1)(2)</sup> , 6.2.3 <sup>(1)</sup> , 6.2.4 <sup>(2)</sup> , 6.2.5 <sup>(2)</sup> , 6.2.6 <sup>(1)</sup> , 6.2.7 <sup>(1)</sup> , 6.2.8 <sup>(2)</sup> , 6.2.9 <sup>(1)(2)</sup> , 6.2.10 <sup>(1)</sup> , 6.2.11 <sup>(1)</sup> , 6.2.12 <sup>(2)</sup> and 6.2.13 <sup>(1)(2)</sup> . See sections 6.1 and 6.2 of this Certificate.
Standard:	7.1(a)(b)	Statement of sustainability
Comment:		The system can contribute to satisfying the relevant requirements of Regulation 9, Standards 1 to 6, and therefore will contribute to a construction meeting the bronze level of sustainability as defined in this Standard. In addition, the system can contribute to a construction meeting a higher level of sustainability as defined in this Standard, with reference to clauses 7.1.4 <sup>(1)(2)</sup> [Aspect 1 <sup>(1)(2)</sup> and 2 <sup>(1)</sup> ], 7.1.6 <sup>(1)(2)</sup> [Aspect 1 <sup>(1)(2)</sup> and 2 <sup>(1)</sup> ] and 7.1.7 <sup>(1)(2)</sup> [Aspect 1 <sup>(1)(2)</sup> ]. See section 6.1 of this Certificate.
Regulation:	12	<b>Building standards applicable to conversions</b>
Comment:		All comments given for the system under Regulation 9, Standards 1 to 6, also apply to this Regulation, with reference to clause 0.12.1 <sup>(1)(2)</sup> and Schedule 6 <sup>(1)(2)</sup> .
<p>(1) Technical Handbook (Domestic). (2) Technical Handbook (Non-Domestic).</p>		



## The Building Regulations (Northern Ireland) 2012 (as amended)

Regulation:	23	<b>Fitness of materials and workmanship</b>
Comment:		The system is acceptable. See sections 13.1 and 13.2 and the <i>Installation</i> part of this Certificate.
Regulation:	28(b)	<b>Resistance to moisture and weather</b>
Comment:		Walls insulated with the system can satisfy this Regulation. See section 10.1 of this Certificate.
Regulation:	29	<b>Condensation</b>
Comment:		Walls insulated with the system can satisfy the requirements of this Regulation. See section 11.4 of this Certificate.
Regulation:	30	<b>Stability</b>
Comment:		The system can sustain and transmit wind loads to the substrate wall. See sections 7.1 to 7.12 of this Certificate.
Regulation:	36(a)	<b>External fire spread</b>
Comment:		The system is restricted by this Regulation. See sections 8.1 to 8.5 of this Certificate.
Regulation:	39(a)(i)	<b>Conservation measures</b>
Regulation:	40	<b>Target carbon dioxide emission rate</b>
Comment:		The system can contribute to satisfying these Regulations. See sections 6.1 and 6.2 of this Certificate.

# Construction (Design and Management) Regulations 2015

## Construction (Design and Management) Regulations (Northern Ireland) 2016

Information in this Certificate may assist the client, designer (including Principal Designer) and contractor (including Principal Contractor) to address their obligations under these Regulations.

See sections: 3 *Delivery and site handling* (3.2) and 12 *Maintenance and repair* of this Certificate.

### Additional Information

#### NHBC Standards 2022

In the opinion of the BBA, the Jubizol EPS External Wall Insulation System, if installed, used and maintained in accordance with this Certificate, can satisfy or contribute to satisfying the relevant requirements in relation to *NHBC Standards<sup>(1)</sup>*, Part 6 *Superstructure (excluding roofs)*, Chapter 6.9 *Curtain walling and cladding*.

(1) There is a general requirement in NHBC Standards Chapter 6.9 for fire-retardant-treated insulation in accordance with BS EN 13163 : 2012 to be used with these systems.

### Technical Specification

#### 1 Description

1.1 The Jubizol EPS External Wall Insulation System comprises white or grey EPS insulation boards, mechanically fixed to the external masonry wall, with supplementary adhesive (minimum 40% coverage), reinforced basecoat, primer and various finish coats.

1.2 The system can be designed to achieve either a 30- or 60-year service life (see Figures 1a and 1b). Mechanical fixings are applied through the insulation boards (30-year system) or through the reinforcing mesh and insulation boards (60-year system). See sections 1.3 and 1.4 for additional information.

##### 30-year durability (see Figure 1a)

1.3 After the boards have been secured to the wall with insulation adhesive and installed with four mechanical fixings per square metre, the basecoat (see section 1.6) is trowel-applied to the specified thickness, followed by the reinforcing mesh, which is fully embedded within the basecoat. The system is left to cure before application of the primer, finish and decorative coats (described in sections 1.6 and 16).

##### 60-year durability (see Figure 1b)

1.4 After the boards have been secured to the wall with insulation adhesive and one mechanical fixing in the middle of each board, the basecoat (see section 1.6) is trowel-applied to the specified thickness, followed by the reinforcing mesh, which is fully embedded within the basecoat. While the basecoat is still wet, additional mechanical fixings are applied through the mesh and insulation boards into the substrate (resulting in a total of six fixings per square metre). Once the first layer of reinforced basecoat has cured, a second layer of mesh is applied, along with a second layer of basecoat. Finally, a third layer of basecoat is applied once the second layer has cured. The system is left to cure before application of the primer, finish and decorative coats (described in sections 1.6 and 16).

1.5 Additionally, for 60-year durability systems, the requirements of sections 1.6 (mechanical fixings) and 4.14 must be met.

1.6 The system comprises the following components:

##### Adhesive (supplementary)

- Jubizol Adhesive Mortar — a high-elasticity cementitious powder requiring 4 to 4.4 litres of clean water per bag, applied at a coverage rate of 3.5 to 5 kg·m<sup>-2</sup>

- Jubizol Adhesive — a cementitious powder requiring 3.8 to 4.2 litres of clean water per bag, to give coverage rates of 3.5 to 5 kg.m<sup>-2</sup>
- Jubizol EPS Adhesive Mortar — a cementitious mortar requiring 4 to 4.4 litres of clean water per bag, to give coverage rates of 3.5 to 5 kg.m<sup>-2</sup>.

### Insulation<sup>(1)</sup>

- EPS 70 White 039 — 1000 by 500 mm EPS boards in a standard range of thicknesses between 60<sup>(2)</sup> and 300 mm, with a nominal density of 16.5 kg.m<sup>-3</sup>, a minimum compressive strength of 70 kPa and a minimum tensile strength perpendicular to the face of 150 kPa. The boards are classified as Euroclass E in accordance with BS EN 13501-1 : 2007 and are manufactured to comply with the requirements of BS EN 13163 : 2012
- EPS 70 White 038 — 1000 by 500 mm EPS boards in a standard range of thicknesses between 60<sup>(2)</sup> and 300 mm, with a nominal density of 15 kg.m<sup>-3</sup>, a minimum compressive strength of 70 kPa and a minimum tensile strength perpendicular to the face of 100 kPa. The boards are classified as Euroclass E in accordance with BS EN 13501-1 : 2007 and are manufactured to comply with the requirements of BS EN 13163 : 2012
- EPS 70 Grey 032 — 1000 by 500 mm EPS boards in a standard range of thicknesses between 60<sup>(2)</sup> and 300 mm, with a density between 15 and 18 kg.m<sup>-3</sup>, a minimum compressive strength of 70 kPa and a minimum tensile strength of either 100 or 150 kPa. The boards are classified as Euroclass E in accordance with BS EN 13501-1 : 2007 and are manufactured to comply with the requirements of BS EN 13163 : 2012.

(1) For declared thermal conductivity values ( $\lambda_D$ ), see Table 2 of this Certificate.

(2) The minimum thickness must be 80 mm when EJOT STR-U mechanical fixings are specified (see Table 6). Thicknesses below 60 mm are normally used for reveals.

### Mechanical fixings

- Mechanical fixings<sup>(1)(2)</sup> — anchors with adequate length to suit the substrate and insulation thickness, approved and supplied by the Certificate holder, and selected from:
  - EJOT STR U<sup>(3)(4)</sup> — high density polyethylene (HDPE) anchor sleeve with a stainless steel or electro-galvanized steel screw
  - EJOT SDM T plus<sup>(4)</sup> — polyamide anchor sleeve with a stainless steel or electro-galvanized steel screw
  - EJOT NT U<sup>(4)</sup> — HDPE anchor sleeve with a stainless steel or electro-galvanized steel pin
  - Pritrdilno Sidro PSK<sup>(5)</sup> — polypropylene (BD310MO), anchor sleeve with an electro-galvanized steel pin
  - Plasticno Pritrdilo PP<sup>(5)</sup> — polypropylene (BD310MO) anchor sleeve and pin.

(1) Other fixings may be used provided they can be demonstrated to have equal or higher pull-out strength, plate diameter and plate stiffness characteristics.

(2) HDPE, polyamide or polypropylene anchor sleeve with a stainless steel pin or screw to grades 1.4301 or 1.4401 to BS EN 10088-2 : 2014 are required in order to achieve a 60-year durability performance.

(3) The minimum residual thickness of the insulation, excluding the depth of the fixing die, must be  $\geq 60$  mm when embedding the EJOT STR U fixing in the insulation.

(4) These fixings when used with galvanized steel screw/pin can only be specified for 30-year durability applications.

(5) These fixings can only be specified for 30-year durability applications and for insulation boards with tensile resistance  $\geq 150$  kPa.

### Basecoat

- Jubizol Adhesive Mortar — a high-elasticity cementitious render, including aggregates and additives, requiring 4 to 4.4 litres of clean water per bag, and applied at a coverage rate of 5.6 to 8.4 kg.m<sup>-2</sup>. The thickness of the basecoat is dependent on the durability of the system (approximately 5 or 8 mm for a 30- or 60-year system respectively, as described in section 16)
- Jubizol EPS Adhesive Mortar — a cementitious mortar requiring 4 to 4.4 litres of clean water per bag, to give coverage rates of approximately 4.5 kg.m<sup>-2</sup> (approximately 5 or 8 mm for a 30- or 60-year system respectively, as described in section 16).

### Reinforcing mesh

- Jubizol Glassfibre Mesh — an alkali-resistant glass fibre mesh (grid size 3.5 by 4.5 mm) with a polymer coating, and nominal weight of 160 g.m<sup>-2</sup>
- Jubizol Glassfibre Mesh SD 4420 G DIN — an alkali-resistant glass fibre mesh (grid size 3.5 by 4.5 mm) with a polymer coating, and nominal weight of 160 g.m<sup>-2</sup>.

## Primer

- Jubizol Unigrund — a water-based acrylic slurry primer for use with all finishing coats (except mineral-based finishing coats, mineral-trowelled render, mineral smooth render and Nivelin D)
- Akryl Emulsion — a water-based acrylic primer for use with the mineral-based finishing coats
- Silicate Primer — a water-based silicate primer for use with the silicate-based finishing coats
- Silicone Primer — a water-based silicone primer for use with the silicone-based finishing coats.

## Finish coats

### ***Render finishes<sup>(1)</sup>***

- Mineral Trowelled Render — a ready-mixed lime-cement-based mortar (particle sizes 2 and 2.5 mm) requiring 3.8 to 4.2 litres of clean water per bag, to give coverage rates of 2.6 to 3.1 kg.m<sup>-2</sup>
- Mineral Smooth Render — a ready-mixed lime-cement-based mortar (particle sizes 1.5, 2 and 2.5 mm) requiring 3.8 to 4.2 litres of clean water per bag, to give coverage rates of 2.6 to 3.6 kg.m<sup>-2</sup>
- Silicate Trowelled Render — a ready-to-use render paste (particle sizes 2 and 2.5 mm) to give coverage rates of 2.5 to 3.2 kg.m<sup>-2</sup>
- Silicate Smooth Render — a ready-to-use render paste (particle sizes 1.5, 2 and 2.5 mm) to give coverage rates of 3 to 5.5 kg.m<sup>-2</sup>
- Silicone Trowelled Render — a ready-to-use render paste (particle sizes 2 and 2.5 mm) to give coverage rates of 3.5 to 5 kg.m<sup>-2</sup>
- Silicone Smooth Render — a ready-to-use render paste (particle sizes 1.5, 2 and 2.5 mm) to give coverage rates of 2.8 to 3.5 kg.m<sup>-2</sup>
- Nivelin D<sup>(2)</sup> — a ready-mixed polymer-based render mortar requiring 0.25 to 0.27 litres of clean water per kg, applied to a thickness between 1.5 and 5 mm, to give coverage rate of approximately 4 kg.m<sup>-2</sup>
- Nanoxil G — a silicone ready-to-use render paste (particle sizes 1.5, 2 and 2.5 mm) to give coverage rates of 2.5 to 4.7 kg.m<sup>-2</sup>.

(1) The thickness of the applied finish is regulated by the particle size specified.

(2) Finishing coat Nivelin D is applied without primer.

### ***Dash Receiver finish***

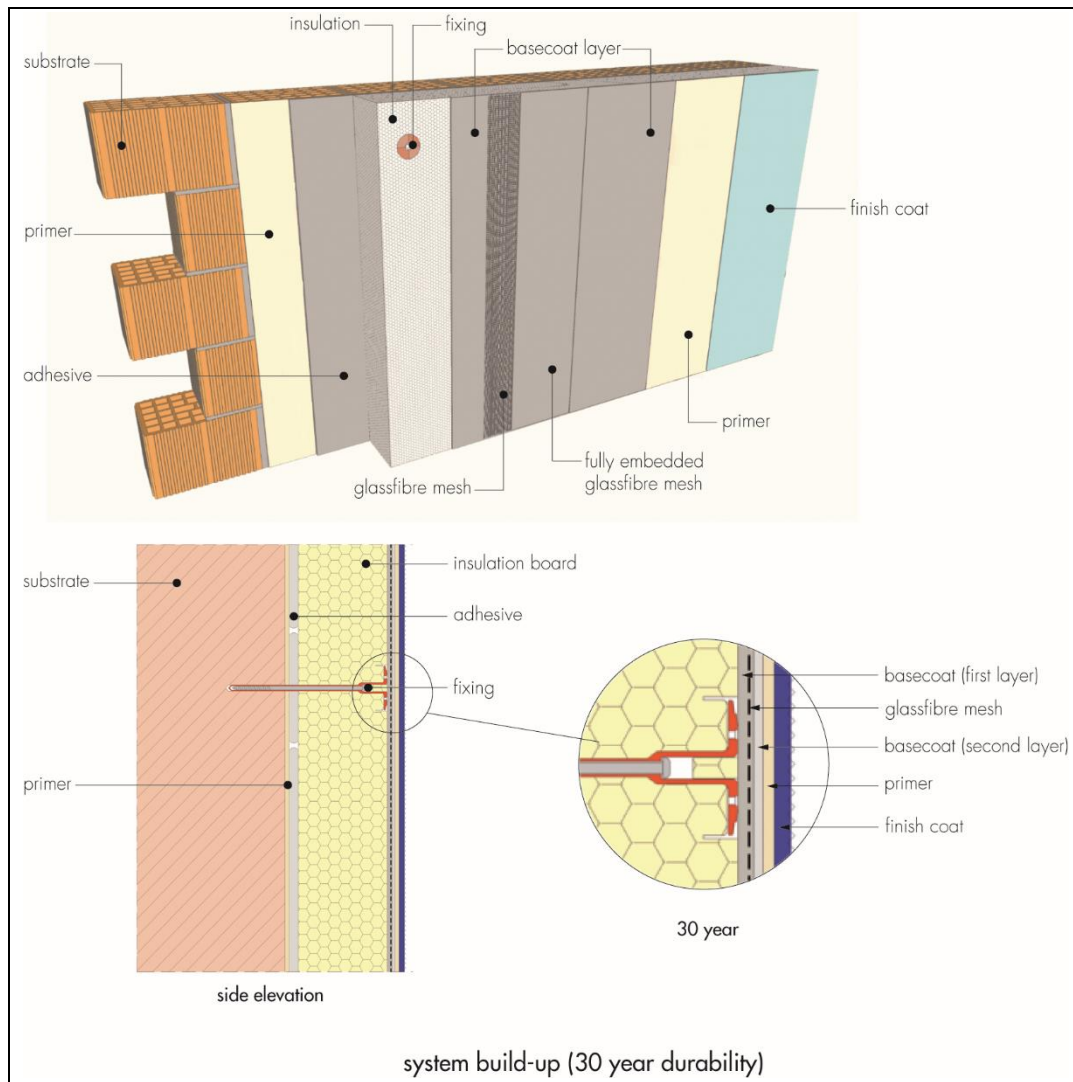
- Jubizol Dash Receiver — a polymer-modified cementitious dash receiver applied to a thickness of 5 to 8 mm and used with a spar dash finish, requiring 3.8 to 4.2 litres of clean water per bag to give a coverage rate of approximately 2.5 kg.m<sup>-2</sup>. Available in eleven colours<sup>(1)</sup>
- Spar dash aggregate — available in 4 to 8 mm particle sizes and in colours to suit the Jubizol Dash Receiver render.

(1) White, ivory, cream, buff, fawn, beige, chestnut, chocolate, brick red, grey and redburn (see section 8.3)

## Decorative coats

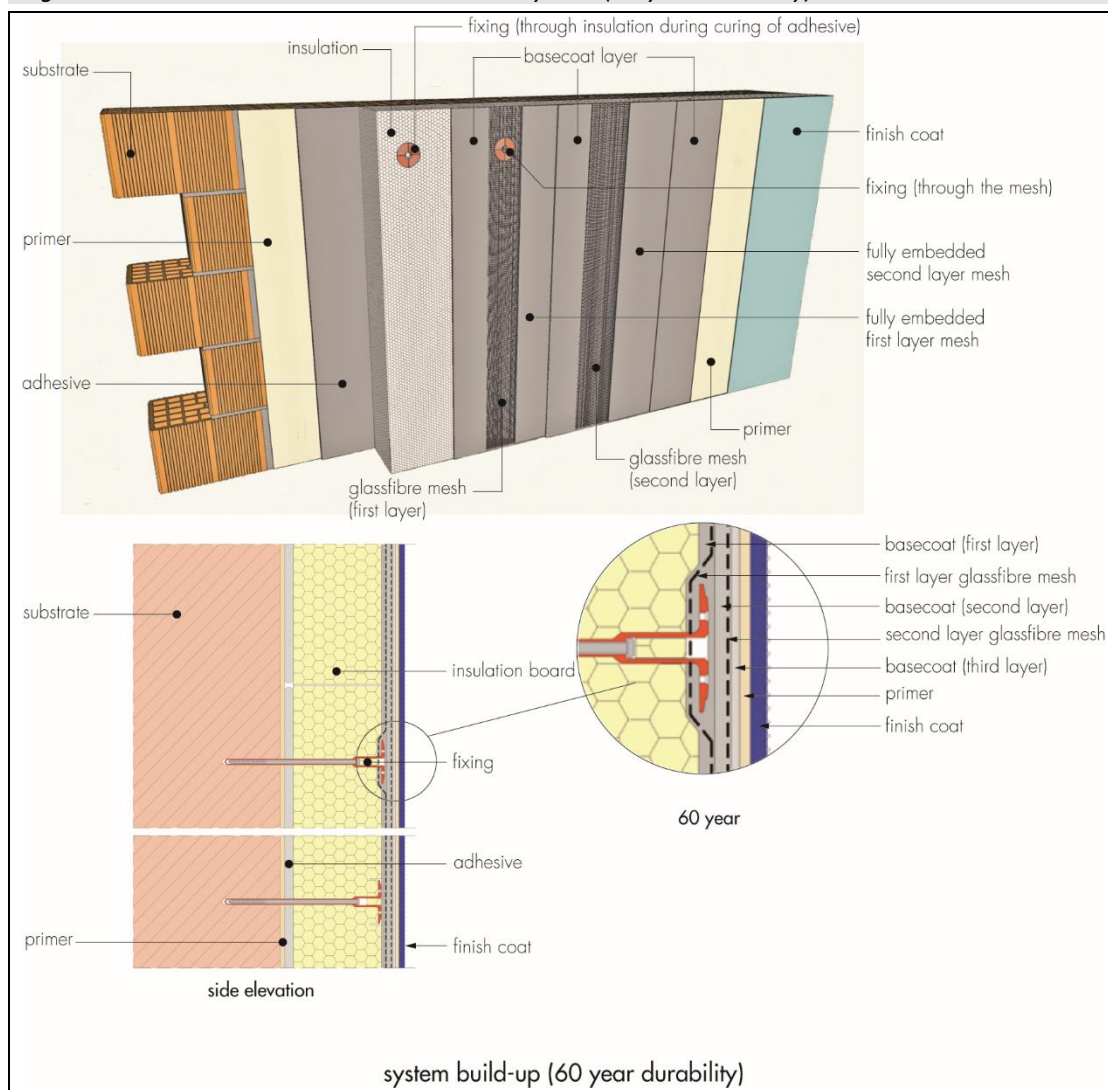
- Acrycolor — liquid exterior waterborne acrylic paint.

**Figure 1a Jubizol EPS External Wall Insulation System (30-year durability)**





**Figure 1b Jubizol EPS External Wall insulation System (60-year durability)**



#### 1.7 Ancillary materials used with the system are:

- a range of aluminium, PVC-U or stainless steel profiles<sup>(1)</sup>, comprising:
  - base profile
  - edge profile
  - corner profile with optional PVC-U nosing
  - render stop profile.

(1) For a 60-year durability system, these profiles must be made of stainless steel (see section 13.2).

#### 1.8 Ancillary materials also used with the system, but which are outside the scope of this Certificate, are:

- a range of aluminium, PVC-U or stainless steel profiles<sup>(1)</sup>, comprising:
  - movement joint
  - expansion joint
- profile connectors and fixings
- fungicidal wash
- silicone sealants
- expansion foam — polyurethane foam used for filling gaps between boards.

(1) For a 60-year durability system, these profiles must be made of stainless steel (see section 13.2).



## 2 Manufacture

2.1 The system components are manufactured by the Certificate holder or bought in from suppliers, to an agreed specification.

2.2 As part of the assessment and ongoing surveillance of product quality, the BBA has:

- agreed with the manufacturer the quality control procedures and product testing to be undertaken
- assessed and agreed the quality control operated over batches of incoming materials
- monitored the production process and verified that it is in accordance with the documented process
- evaluated the process for management of nonconformities
- checked that equipment has been properly tested and calibrated
- undertaken to carry out the above measures on a regular basis through a surveillance process, to verify that the specifications and quality control operated by the manufacturer are being maintained.

2.3 The management system of JUB kemična industrija d.o.o. has been assessed and registered as meeting the requirements of BS EN ISO 9001 : 2015, BS EN ISO 14001 : 2015, ISO 50001 : 2018 and ISO 45001 : 2018 by IQNet (Certificates SI-Q-159, SI-E-034, SI-En-024 and SI-H-022 respectively).

## 3 Delivery and site handling

3.1 The insulation boards are delivered in sealed packs and each pack carries the product identification and manufacturer's batch numbers.

3.2 The other components are delivered in the quantities and packaging listed in Table 1.

<i>Table 1 Component supply details</i>	
Component	Quantity and package
Jubizol Adhesive Mortar, Jubizol Adhesive and Jubizol	25 kg bags
EPS Adhesive Mortar (adhesive/basecoat)	
Jubizol Glassfibre Mesh (SD 4420 G DIN)	50 m roll, 1 m wide
Jubizol Unigrund primer	18 kg plastic containers
Akryl Emulsion primer	1 kg, 5 kg and 18 kg containers
Silicate Primer and Silicone Primer	5 litre containers
Mineral renders (Trowelled and Smooth)	20 kg bags
Silicate renders (Trowelled and Smooth)	25 kg containers
Silicone renders (Trowelled and Smooth)	25 kg containers
Nivelin D	5 kg and 20 kg bags
Nanoxil G	25 kg plastic containers
Jubizol Dash Receiver	25 kg bags
Mechanical fixings	boxed by manufacturer
Spar dash aggregate	25 kg bags
Acrylcolor paint	5 litre and 15 litre containers

3.3 The insulation must be stored on a firm, clean, level base, off the ground and under cover until required for use. Care must be taken when handling to avoid damage.

3.4 The insulation must be protected from prolonged exposure to sunlight, either by storing opened packs under cover or re-covering with opaque polythene sheeting. Care must be taken to avoid contact with solvents or materials containing volatile organic components. The boards must not be exposed to open flame or other ignition sources.

3.5 The powder and paste components must be stored off the ground in a safe area in dry conditions, and protected from moisture and frost. Contaminated material should be discarded.

3.6 The other components of the systems should be stored in a safe area, under cover and protected from excessive heat and frost at all times.

## Assessment and Technical Investigations

The following is a summary of the assessment and technical investigations carried out on the Jubizol EPS External Wall Insulation System.

### Design Considerations

#### 4 General

4.1 The Jubizol EPS External Wall Insulation System, when installed in accordance with this Certificate, is satisfactory for use in reducing the thermal transmittance (U value) of external masonry or concrete walls of new and existing buildings. It is essential that the detailing techniques specified in this Certificate are carried out to a high standard if the ingress of water into the insulation is to be avoided and the full thermal benefit obtained from treatment with the system (eg the insulation must be protected by an overhang, and window sills should be designed and installed so as to direct water away from the building).

4.2 For improved thermal/carbon-emissions performance of the structure, the designer should consider additional/alternative fabric and/or services measures.

4.3 The system is for application to the outside of external walls of masonry, normal weight concrete, lightweight concrete, autoclaved concrete and no-fines concrete construction, on new or existing domestic and non-domestic buildings (with or without existing render) with height and boundary restrictions (see section 8 of this Certificate). Prior to installation of the system, wall surfaces should comply with section 14 of this Certificate.

4.4 New walls subject to national Building Regulations should be constructed in accordance with the relevant recommendations of:

- BS EN 1992-1-1 : 2004 and its UK National Annex
- BS EN 1996-1-1 : 2005 and its UK National Annex
- BS EN 1996-2 : 2006 and its UK National Annex
- BS 8000-0 : 2014
- BS 8000-2.2 : 1990
- BS 8000-3 : 2001.

4.5 New walls not subject to regulatory requirements should also be built in accordance with the Standards identified in section 4.4 of this Certificate.

4.6 Movement joints should be incorporated into the system in line with existing movement joints in the building structure in accordance with the Certificate holder's recommendations for the specific installation.

4.7 The system will improve the weather resistance of a wall and provide a decorative finish. However, for existing buildings, it should only be installed where there are no signs of dampness on the inner surface of the wall other than those caused solely by condensation.

4.8 The effect of the system on the acoustic performance of a construction is outside the scope of this Certificate.

4.9 The fixing of sanitary pipework, plumbing, rainwater goods, satellite dishes, clothes lines, hanging baskets and similar items to the system is outside the scope of this Certificate (see section 4.10).

4.10 External pipework and ducts should be removed before installation, and alterations made to underground drainage to accommodate repositioning of the pipework to the finished face of the system. The Certificate holder may advise on suitable fixing methods, but these are outside the scope of this Certificate.

4.11 The designer should select a construction appropriate to the local wind-driven rain index, paying due regard to the design detailing, workmanship and materials to be used.

4.12 It is essential that this system is installed and maintained in accordance with the conditions set out in this Certificate.

4.13 The Jubizol EPS External Wall Insulation System can be adapted to achieve an extended service life of 60 years instead of the standard 30. The difference between 30- and 60-year durability systems is covered in sections 1.2 to 1.8, with the detailed installation procedure covered in section 16.

4.14 For 60-year durability systems, the mechanical fixings must be installed through the reinforcing mesh and insulation. Additionally, the following components must be constructed from stainless steel grade 1.4301 or 1.4401 to BS EN 10088-2 : 2014:

- base profile and render stop end including the fixings. In addition, any other profile component which would remain exposed after the application of the finish coat
- pin or screw for mechanical fixings.

## 5 Practicability of installation

The system should be installed only by specialised contractors who have successfully undergone training and registration by the Certificate holder (see section 15 of this Certificate).

**Note:** The BBA operates a UKAS-accredited Approved Installer Scheme for external wall insulation; details of approved installer companies are included on the BBA's website ([www.bbacerts.co.uk](http://www.bbacerts.co.uk)).

## 6 Thermal performance



6.1 Calculations of thermal transmittance (U value) should be carried out in accordance with BS EN ISO 6946 : 2017 and BRE Report BR 443 : 2006, using the declared thermal conductivity ( $\lambda_D$ ) values of the insulations given in Table 2 of this Certificate.

*Table 2 Declared thermal conductivity values ( $\lambda_D$ ) and available thicknesses*

Insulation types	Insulation board thickness range (mm)	Thermal conductivity ( $W \cdot m^{-1} \cdot K^{-1}$ )
EPS 70 White 039	60 to 300	0.039
EPS 70 White 038		0.038
EPS 70 Grey 032		0.032



6.2 The U value of a completed wall will depend on the selected insulation type and thickness, fixing method and type and number of fixings, and the insulating value of the substrate masonry and its internal finish. Calculated U values for sample construction in accordance with the national Building Regulations are given in Tables 3 and 4, and are based on the thermal conductivities given in Table 2.

**Table 3 Insulation thickness required to achieve U value<sup>(1)(2)</sup> using galvanized steel fixings (30-year durability)**

U value <sup>(4)</sup> (W·m <sup>-2</sup> ·K <sup>-1</sup> )	Insulation thickness <sup>(3)</sup> (mm)					
	215 mm brickwork, $\lambda = 0.56 \text{ W} \cdot \text{m}^{-1} \cdot \text{K}^{-1}$			200 mm dense blockwork, $\lambda = 1.75 \text{ W} \cdot \text{m}^{-1} \cdot \text{K}^{-1}$		
	EPS 70 White 039	EPS 70 White 038	EPS 70 Grey 032	EPS 70 White 039	EPS 70 White 038	EPS 70 Grey 032
0.18	230	220	190	230	230	190
0.19	210	210	170	220	210	180
0.25	150	150	130	160	160	130
0.26	140	140	120	150	150	130
0.28	130	130	110	140	140	120
0.30	120	120	100	130	130	110
0.35	100	100	80	110	110	90

- (1) Wall construction inclusive of 13 mm plaster ( $\lambda = 0.57 \text{ W} \cdot \text{m}^{-1} \cdot \text{K}^{-1}$ ), brickwork (protected) with 17.1% mortar or dense blockwork with 6.7% mortar ( $\lambda = 0.88 \text{ W} \cdot \text{m}^{-1} \cdot \text{K}^{-1}$ ). Declared thermal conductivity ( $\lambda_D$ ) of the insulation is as shown in Table 2. A 5 mm thick adhesive layer with  $\lambda = 0.43 \text{ W} \cdot \text{m}^{-1} \cdot \text{K}^{-1}$  covering 100% of the area is also included, and a board emissivity of 0.9, together with an external render thickness of 4.5 mm with  $\lambda = 1.0 \text{ W} \cdot \text{m}^{-1} \cdot \text{K}^{-1}$ .
- (2) Calculations based on a mechanically fixed system that included four galvanized steel fixings per m<sup>2</sup>, with a point thermal transmittance ( $X_p$ ) of 0.004 W·K<sup>-1</sup> per pin. Use of other types of fixings should be calculated in accordance with BS EN ISO 6946 : 2017. A gap correction ( $\Delta U''$ ) of zero is assumed.
- (3) Based upon incremental insulation thickness of 10 mm.
- (4) When applying the maximum available insulation thickness, these walls can achieve U values from 0.12 to 0.15 W·m<sup>-2</sup>·K<sup>-1</sup> depending on insulation type and wall type.

**Table 4 Insulation thickness required to achieve U value<sup>(1)(2)</sup> using stainless steel fixings (60-year durability)**

U value <sup>(4)</sup> (W·m <sup>-2</sup> ·K <sup>-1</sup> )	Insulation thickness <sup>(3)</sup> requirement (mm)					
	215 mm brickwork, $\lambda = 0.56 \text{ W} \cdot \text{m}^{-1} \cdot \text{K}^{-1}$			200 mm dense blockwork, $\lambda = 1.75 \text{ W} \cdot \text{m}^{-1} \cdot \text{K}^{-1}$		
	EPS 70 White 039	EPS 70 White 038	EPS 70 Grey 032	EPS 70 White 039	EPS 70 White 038	EPS 70 Grey 032
0.18	210	200	170	220	210	180
0.19	200	190	160	210	200	170
0.25	140	140	120	150	150	130
0.26	140	130	110	150	140	120
0.28	130	120	100	140	130	110
0.30	120	110	100	130	120	100
0.35	100	90	80	110	100	90

- (1) Wall construction inclusive of 13 mm plaster ( $\lambda = 0.57 \text{ W} \cdot \text{m}^{-1} \cdot \text{K}^{-1}$ ), brickwork (protected) with 17.1% mortar or dense blockwork with 6.7% mortar ( $\lambda = 0.88 \text{ W} \cdot \text{m}^{-1} \cdot \text{K}^{-1}$ ). Declared thermal conductivity ( $\lambda_D$ ) of the insulation is as shown in Table 2. A 5 mm thick adhesive layer with  $\lambda = 0.43 \text{ W} \cdot \text{m}^{-1} \cdot \text{K}^{-1}$  covering 100% of the area is also included, and a board emissivity of 0.9, together with an external render thickness of 4.5 mm with  $\lambda = 1 \text{ W} \cdot \text{m}^{-1} \cdot \text{K}^{-1}$ .
- (2) Calculations based on a mechanically fixed system that included six stainless steel fixings per m<sup>2</sup>, with a point thermal transmittance ( $X_p$ ) of 0.002 W·K<sup>-1</sup> per pin. Use of other types of fixings should be calculated in accordance with BS EN ISO 6946 : 2017. A gap correction ( $\Delta U''$ ) of zero is assumed.
- (3) Based upon incremental insulation thickness of 10 mm.
- (4) When applying the maximum available insulation thickness, these walls can achieve U values from 0.11 to 0.14 W·m<sup>-2</sup>·K<sup>-1</sup> depending on insulation type and wall type.

6.3 Care must be taken in the overall design and construction of junctions with other elements and openings, to minimise thermal bridges and air infiltration. Detailed guidance can be found in the documents supporting the national Building Regulations.

## 7 Strength and stability

### General



7.1 The Certificate holder is ultimately responsible for the design of the systems and it is the responsibility of the company installing the systems to accurately follow the installation instructions (see also section 5). The Certificate holder must also verify that a suitably experienced and qualified individual (with adequate professional indemnity) establishes that:

- the wind loads on the different zones of the building's elevation for the specific geographical location have been calculated correctly (see section 7.3)
- the system can adequately resist and safely transfer the calculated loads, accounting for all possible failure modes, to the substrate wall and supporting structure (see sections 7.3 to 7.6).

7.2 The substrate and supporting structure must be capable of transferring all additional loading due to the installation of the system, to the ground in a satisfactory manner. The adequacy of the substrate and supporting structure must be verified by the person or party responsible for the global stability of the building to which the system is applied. Any defects should be made good prior to the systems being installed.

7.3 The wind loads on the walls should be calculated, taking into account all relevant factors such as location and topography, in accordance with BS EN 1991-1-4 : 2005 and its UK National Annex. All of the factors affecting wind load on each elevation and specific zones of the building must be considered. In accordance with BS EN 1990 : 2002 and its UK National Annex, a partial factor of 1.5 must be applied to the calculated characteristic wind pressure values to establish the design wind load to be resisted by the systems.

7.4 Installations correctly designed in accordance with this Certificate will safely accommodate the applied loads due to the self-weight of the systems, wind and impact.

7.5 Positive wind load is transferred to the substrate wall directly via compression through the render and insulation system.

7.6 Negative wind load is transferred to the substrate wall via<sup>(1)(2)</sup>:

- the bond between the insulation and render system (see section 7.7)
- the pull-out resistance of the fixing from the substrate wall (see section 7.8)
- the pull-through resistance of the fixing (see section 7.9).

(1) The contribution of the adhesive is not considered when calculating resistance to wind load.

(2) Further guidance is available from BBA Guidance Note 1, available on the BBA website ([www.bbacerts.co.uk](http://www.bbacerts.co.uk)).

7.7 The characteristic bond resistance between the insulation and render interface derived from test results was  $80 \text{ kN}\cdot\text{m}^{-2}$ . The design resistance of the bond between the insulation and render ( $N_{RD1}$ ) should be taken as the characteristic bond resistance divided by a partial factor of 9.

7.8 Typical characteristic pull-out resistances for the fixings taken from the corresponding European Technical Assessment (ETA) are given in Table 5; the values are dependent on the fixing type and must be selected to suit the specific loads and substrate concerned. In situations where suitable data does not exist<sup>(1)</sup>, the characteristic pull-out resistance must be established from site-specific pull-out tests conducted on the substrate of the building to ascertain the minimum resistance to pull-out failure of the fixings, and determined in accordance with the guidance given in EOTA TR051 (minimum test characteristic value =  $0.6 \times$  mean of 5 lowest test results). To obtain the design pull-out resistance of the fixings ( $N_{RD2}$ ), this characteristic pull-out resistance should then be divided by the partial factor given in Table 5.

(1) To qualify as suitable data, the age and condition of the substrate must be equivalent to that used to establish the values in the ETA.

**Table 5 Fixings — typical characteristic pull-out resistances**

Fixing type <sup>(1)</sup>	ETA number	Substrate	Drill diameter (mm)	Effective anchorage depth (mm)	Characteristic pull-out resistance (kN) <sup>(2)</sup>	Partial factor
EJOT STR-U	04/0023	Concrete (C12/15) Clay brickwork	8	25	1.5	2
EJOT SDM-T plus	04/0064	Concrete (C12/15) Clay brickwork	8	50	1.5	2
EJOT NT-U	05/0009	Concrete (C12/15) Clay brickwork	8	25	1.2 1.5	2
Pritrdilno Sidro PSK <sup>(3)</sup>	05/0148	Concrete C16/20 Clay brickwork	8	55	0.4 0.3	2
Plasticno Pritrdilo PP <sup>(3)</sup>	05/0149	Concrete C16/20 Clay brickwork	10	50	0.4 0.6	2

(1) The minimum values for plate stiffness of fixings is 0.6 kN·mm and the load resistance is 2.08 kN.

(2) Values are determined in accordance with EAD 330196-00-0604 : 2016 and are dependent on the substrate. The use categories are defined in the corresponding ETA.

(3) Pritrdilno Sidro PSK and Plasticno Pritrdilo PP fixings cannot be specified when using insulation boards with tensile strength of less than 150 kPa (see Table 6).

7.9 The characteristic pull-through resistance of the fixings was determined from tests using a 60 mm diameter fixing plate and minimum insulation thickness between 50 and 80 mm. The design resistance per fixing ( $N_{RD3}$ ) is obtained by applying an appropriate partial factor as shown in Table 6.

**Table 6 Design pull through resistances**

Factor (unit)	EPS 70 insulation 1000 x 500 mm							
	Pull through data for 30- and 60-year durability systems							
Tensile resistance of the insulation (kN·m <sup>-2</sup> )	≥ 100		≥ 100		≥ 150		≥ 150	
Fixing type <sup>(1)</sup>	EJOT STR-U		EJOT SDM-T plus EJOT NT-U EJOT NT-U		Pritrdilno Sidro PSK		Plasticno Pritrdilo PP	
Fixing plate diameter (mm)	≥ 60		≥ 60		≥ 60		≥ 60	
Insulation thickness (mm)	≥ 80		≥ 60		≥ 60		≥ 50	
Characteristic pull through resistance <sup>(2)</sup> per fixing Kn	At panel	0.550	At panel	0.510	At panel	0.560	At panel	0.450
	At joint	0.480	At joint	0.400	At joint	0.490	At joint	0.380
Partial factor <sup>(3)</sup>	2.5		2.5		2.5		2.5	
Design pull through per fixing ( $N_{RD3}$ ) kN	At panel	0.220	At panel	0.204	At panel	0.224	At panel	0.180
	At joint	0.192	At joint	0.160	At joint	0.196	At joint	0.152
Design pull through resistance per board kN (based on the minimum number of fixings) <sup>(4)</sup>	0.384		0.320		0.392		0.304	
Design pull through resistance per board kN (based on maximum number of fixings) <sup>(5)</sup>	1.704		1.544		1.736		1.384	

(1) See Table 5 for typical characteristic pull-out resistance of the fixings.

(2) Characteristic pull-through resistance of insulation over the head of the fixing, in accordance with BS EN 1990 : 2002, Annex D7.2 and its UK National Annex.

(3) The partial factor is based on the assumption that all insulation boards are quality controlled and tested to establish tensile strength perpendicular to the face of the board.

(4) The minimum design pull through resistance per board is based on a minimum of 2 fixings per board (1000 x 500 mm), which equates to 4 fixings per m<sup>2</sup>. The design resistance for the minimum number of fixings is based on the fixing pattern provided in Figure 5 of this Certificate and minimum insulation thickness specified in this Table. The fixing pattern and interaction of the fixings should be considered when calculating the design resistance per board.

(5) The maximum design pull through resistance per board is based on a maximum of 8 fixings per board (1000 x 500 mm), which equates to 16 fixings per m<sup>2</sup>. The design resistance for the maximum number of fixings is only applicable to the minimum insulation thickness tested and as specified in this Table. The fixing pattern, insulation thickness and interaction of the fixings should be considered when calculating the design resistance per board.

7.10 The number and spacing of the fixings should be determined by the Certificate holder. The number of fixings must not be less than the minimum specified for the system and the fixings should be symmetrically positioned and evenly distributed about the centre of the board both vertically and horizontally except at openings and building corners.

7.11 The data obtained from sections 7.7 to 7.9 must be assessed against the design wind load and the following expression must be satisfied:

For safe design:

$$R_d \geq W_e$$

$$R_{d,b,ins/render} = A_r * N_{RD1}$$

$$R_{d,pull-out} = n * N_{RD2}$$

$$R_{d,pull-through} = (N_{RD3panel} * n_{panel}) + (N_{RD3joint} * n_{joint}) / A_{board}$$

Where:

$R_d$	is the design ultimate resistance ( $kN \cdot m^{-2}$ ) taken as the minimum of $R_{d,b,ins/render}$ , $R_{d,pull-out}$ and $R_{d,pull-through}$
$W_e$	is the maximum design wind load ( $kN \cdot m^{-2}$ )
$R_{d,b,ins/render}$	is the design bond resistance between the insulation and render ( $kN \cdot m^{-2}$ )
$R_{d,pull-out}$	is the design pull-out resistance of the insulation fixings per metre square ( $kN \cdot m^{-2}$ )
$R_{d,pull-through}$	is the design pull-through resistance of the insulation fixings per metre square ( $kN \cdot m^{-2}$ )
$A_r$	is the reinforced basecoat bond area (based on % area covered)
$N_{RD1}$	is the design adhesive bond resistance between the insulation and render, based on test ( $kN \cdot m^{-2}$ )
$n$	is the number of anchor fixings per $m^2$
$N_{RD2}$	is the design pull out resistance per fixing based on test (kN)
$N_{RD3panel}$	is the design pull-through resistance per anchor not placed at the panel joint, based on test (kN)
$N_{RD3joint}$	is the design pull-through resistance per anchor placed at the panel joint, based on test (kN)
$n_{panel}$	is the number of internal anchors in a panel
$n_{joint}$	is the number of joint anchors in a panel
$A_{board}$	is the area of the board ( $m^2$ ).

7.12 The system is mechanically fixed to the substrate wall with a minimum of two fixings per board (equal to four fixings per metre square) as per the fixing pattern shown in Figure 5 for the 30-year system, and with a minimum of three fixings per board (equal to six fixings per metre square) as per fixing pattern shown in Figure 6 for the 60-year system, and in conjunction with a minimum 40% coverage of supplementary adhesive (see section 16 of this Certificate). Additional fixings may be required, depending on the results of the calculations detailed above for the specific site.

## Impact resistance

7.13 Hard body impact tests were carried out in accordance with ETAG 004 : 2013. The system is suitable for use in the Categories up to and including those specified in Table 7 of this Certificate.



Table 7 System impact resistance

Render system: Basecoat as specified + finishing coats indicated below:	Particle size (mm)	Category <sup>(1)</sup>			
		Basecoat (see section 1.6)			
		Jubizol Adhesive Mortar		Jubizol EPS Adhesive Mortar	
		Single-layer mesh	Double-layer mesh	Single-layer mesh	Double-layer mesh
Mineral Trowelled Render Mineral Smooth Render	All	Category II	—	Category III	Category II
Nivelin D	All	—	Category II	—	—
Silicate Trowelled Render Silicate Smooth Render	1.5	Category II	—	—	—
	2 and 2.5	Category I	—	—	—
	All	—	Category I	Category II	Category II
Silicone Trowelled Render Silicone Smooth Render	1.5	Category II	—	—	—
	2 and 2.5	Category I	—	—	—
	All	—	Category I	Category II	Category II
Nanoxil G	All	Category II	Category I	Category II	Category II
Jubizol Dash Receiver + Spar dash aggregate	All	Category I	—	—	—

(1) The Use Categories are defined in ETAG 004 : 2013 as:

- Category I — a zone readily accessible at ground level to the public and vulnerable to hard body impacts but not subjected to abnormally rough use
- Category II — a zone liable to impacts from thrown or kicked objects, but in public locations where the height of the system will limit the size of the impact; or at lower levels where access to the building is primarily to those with some incentive to exercise care
- Category III — a zone not likely to be damaged by normal impacts caused by people or by thrown or kicked objects.

## 8 Behaviour in relation to fire



8.1 The system has a reaction to fire classification<sup>(1)</sup> of B-s1, d0 in accordance with BS EN 13501-1 : 2007.

(1) Test report issuer: ZAG LJUBLJANA. Report number P 0098/06-530-2.

8.2 The fire classification applies to the full range of insulation thicknesses covered by the Certificate.

8.3 The classification applies to the full range of colours available on render finishes and a range of colours on Dash Receiver finish (see section 1.6, Finish coats — colour range covered on Jubizol Dash Receiver finish).

8.4 The EPS insulation material in isolation is classified Euroclass E to BS EN 13501-1 : 2007.



8.5 In England, Wales and Northern Ireland, the system may be used on buildings at any proximity to a boundary. The system is restricted for use in buildings up to 18 m in height.



8.6 In Scotland, the system may be used on buildings more than 1 m from a boundary and, on houses, 1 m or less from a boundary. With minor exceptions, the system should be included in calculations of unprotected area, except on houses where the external wall behind has the appropriate fire resistance.

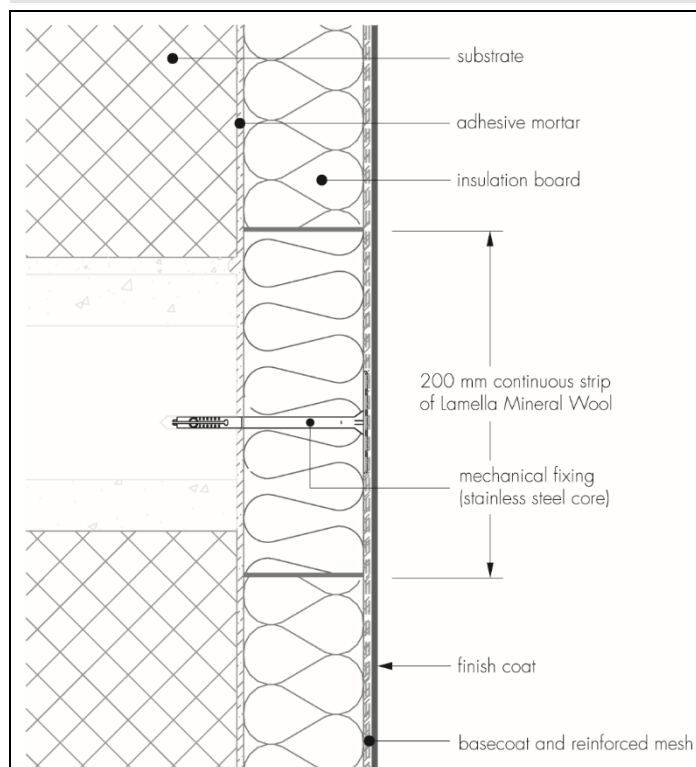
8.7 In Scotland, the system should not be used on any building with a storey more than 11 m above the ground, or on any entertainment or assembly building with a total storey area more than 500 m<sup>2</sup>, or on any hospital or residential care building with a total storey area more than 200 m<sup>2</sup>.

8.8 For application to second storey walls and above, it is recommended that the designer considers at least one stainless steel fixing per square metre, and fire barriers in line with compartment walls and floors as advised in BRE Report BR 135 : 2013 (see Figure 2 of this Certificate). Fire stopping or fire barriers should be incorporated into a construction where required by the relevant national Building Regulations.

8.9 NHBC Standards require in all cases that a minimum of one non-combustible fixing through the reinforcing mesh, per square metre or per insulation board, whichever provides the greater number, should be provided, in addition to the other fixings.

8.10 Designers should refer to the relevant national Building Regulations and guidance for detailed conditions of use, particularly in respect of requirements for substrate fire performance, service penetrations and combustibility limitations for other materials and components used in the overall wall construction.

**Figure 2 Fire barrier details**



## 9 Proximity of flues and appliances

Detailed guidance can be found in the documents supporting the national Building Regulations for the provisions that are applicable when the system is installed in close proximity to certain flue pipes and/or heat-producing appliances.

## 10 Water resistance



10.1 The system will provide a degree of protection against rain ingress. However, care should be taken to ensure that walls are adequately watertight prior to the application of the system. The system must only be installed where there are no signs of dampness on the inner surface of the substrate other than those caused solely by condensation.

10.2 Designers and installers should take particular care in detailing around openings, penetrations and movement joints to minimise the risk of water ingress.

10.3 The guidance given in BRE Report BR 262 : 2002 should be followed in connection with the watertightness of solid wall constructions. The designer should select a construction appropriate to the local wind-driven rain index, paying due regard to the design detailing, workmanship and materials to be used.

10.4 At the top of walls, the system should be protected by a coping, adequate overhang or other detail designed for use with this type of system (see section 16).

## 11 Condensation

11.1 Designers must ensure that an appropriate condensation risk analysis has been carried out for all parts of the construction, including openings and penetrations at junctions between the insulation system and windows, to minimise the risk of condensation. The recommendations of BS 5250 : 2011 should be followed.

## Surface condensation



11.2 Walls will adequately limit the risk of surface condensation when the thermal transmittance (U value) does not exceed  $0.7 \text{ W} \cdot \text{m}^{-2} \cdot \text{K}^{-1}$  at any point and the junctions with other elements and openings comply with section 6.3 of this Certificate.



11.3 Walls will adequately limit the risk of surface condensation when the thermal transmittance (U value) does not exceed  $1.2 \text{ W} \cdot \text{m}^{-2} \cdot \text{K}^{-1}$  at any point. Guidance may be obtained from BS 5250 : 2011, section 4, and Annexes D and G and BRE Report BR 262 : 2002.

## Interstitial condensation



11.4 Walls incorporating the system will adequately limit the risk of interstitial condensation when they are designed and constructed in accordance with BS 5250 : 2011, Section 4 and Annexes D and G.

11.5 The water vapour resistance factors ( $\mu$ ) and equivalent air layer thicknesses ( $s_d$ ) are shown in Table 8.

*Table 8 Water vapour resistance factor ( $\mu$ ) and equivalent air layer thickness ( $s_d$ )*

Components	Thickness (mm)	$\mu$	$s_d$ (m)
Expanded polystyrene insulation – white and grey EPS 70	60 to 300	20 to 40 <sup>(1)</sup>	—
<b>Rendering system:</b> <b>Jubizol Adhesive Mortar basecoat<sup>(2)</sup> plus, as appropriate, primer + finish coat as indicated below (particle size):</b>			
Mineral Trowelled Render or Mineral Smooth Render	4.5 to 8.5	—	0.1
Silicate Trowelled Render or Silicate Smooth Render	4.5 to 8.5	—	0.1
Silicone Trowelled Render or Silicone Smooth Render	4.5 to 8.5	—	0.2
Nivelin D	4.5 to 11	—	0.1
Nanoxil G	4.5 to 8.5	—	0.3
<b>Rendering system:</b> <b>Jubizol EPS Adhesive Mortar basecoat<sup>(3)</sup> plus, as appropriate, primer + finish coat as indicated below (particle size):</b>			
Mineral Trowelled Render or Mineral Smooth Render	4.5 to 6.5	—	0.1
Silicate Trowelled Render or Silicate Smooth Render	4.5 to 6.5	—	0.2
Silicone Trowelled Render or Silicone Smooth Render	4.5 to 6.5	—	0.3
Nanoxil G	4.5 to 6.5	—	0.3

(1) The value is taken from BS EN 12524 : 2000, Table 2. It is recommended that the lower figure is used when assessing the interstitial condensation risk.

(2) Jubizol Adhesive Mortar basecoat applied to a thickness between 3 and 6 mm.

(3) Jubizol EPS Adhesive Mortar basecoat applied to a thickness between 3 and 4 mm.

## 12 Maintenance and repair



12.1 An initial inspection should be made within 12 months and regularly thereafter to include:

- visual inspection of the render for signs of damage. Cracks in the render exceeding 0.2 mm must be repaired
- examination of the sealant around openings and service entry points
- visual inspection of architectural details designed to shed water to confirm that they are performing properly

- visual inspection to ensure that water is not leaking from external downpipes or gutters; such leakage could penetrate the rendering
- necessary repairs effected immediately and any sealant joints at window and door frames replaced at regular intervals
- maintenance schedules, which should include the replacement and resealing of joints (for example, between the insulation systems and window and door frames).

12.2 For a 60-year durability, a detailed maintenance plan must be prepared and provided to the building manager/owner on completion. As a minimum, this should include an inspection for evidence of defects 12 months after the application and subsequently every five years. This plan should include full details of the required inspection regime and a record of these inspections should be retained.

12.3 Damaged areas must be repaired using the appropriate components and procedures detailed in the Certificate holder's installation instructions and in accordance with BS EN 13914-1 : 2016.

## 13 Durability



13.1 The system will remain effective for at least 30 years, provided any damage to the surface finish is repaired immediately and regular maintenance is undertaken, as described in section 12.

13.2 The system's service life can be extended to 60 years provided a planned inspection and maintenance programme is introduced in accordance with section 12. An extended 60 years' service life requires the use of stainless steel base and corner profiles, stainless steel fixings or centre pin Grade 1.4301 and plastic anchor sleeve material such as polyamide (PA6 and PA6.6), polyethylene (PE) or polypropylene (PP) and the following of an appropriate repair and maintenance schedule as covered by the Certificate holder's Repair and Maintenance Manual. In order to achieve this, and depending on the building's location, degree of exposure and detailing, it may be necessary to repair or replace isolated areas. Any damage to the surface finish must be repaired within a time period agreed in the Certificate holder's maintenance manual. Additionally, the fixings must be applied through the mesh.

13.3 Any render containing cement may be subject to lime bloom. The occurrence of this may be reduced by avoiding application in adverse weather conditions. The effect is transient and less noticeable on lighter colours.

13.4 The render may become discoloured with time, the rate depending on the initial colour, the degree of exposure and atmospheric pollution, as well as the design and detailing of the wall. In common with traditional renders, discoloration by algae and lichens may occur in wet areas. The appearance may be restored by a suitable power wash or, if required, by over coating.

13.5 To maintain a high quality aesthetic appearance, it may be necessary to periodically overcoat the building using system-compatible coatings recommended by the Certificate holder and in accordance with BS EN 1062-1 : 2004. Care should be taken not to adversely affect the water vapour transmission or fire characteristics of the system. The advice of the Certificate holder should be sought as to the suitability of a particular product.

## Installation

### 14 Site survey and preliminary work

14.1 A pre-installation survey of the property must be carried out to determine suitability for treatment and the need for any necessary repairs to the building structure before application of the system. A specification is prepared for each elevation of the building indicating:

- the position of beads
- detailing around windows and doors and at eaves
- damp-proof course (dpc) level
- exact position of expansion joints, if required
- areas where flexible seal must be used
- any alterations to external plumbing

- the position of fire barriers
- where required, additional corner mesh and reinforcement.

14.2 The survey should include tests conducted on the walls of the building by the Certificate holder or their approved installers (see section 15) to determine the pull-out resistance of the specified mechanical fixings for the appropriate substrate. An assessment and recommendation is made on the percentage of the supplementary adhesive coverage per board required to withstand the building's expected wind loading, based on calculations using the fixing's pull-out resistance test data. In addition, the type and number of fixings are selected (see section 7). The advice of the Certificate holder should be sought to ensure the proposed bonding pattern is sufficient.

14.3 All modifications, such as alterations to external plumbing and necessary repairs to the building structure, must be completed before installation of the system commences.

14.4 Surfaces should be sound, clean and free from loose material. The flatness of surfaces must be checked; this may be achieved using a straight-edge tool spanning the storey height. Any excessive irregularities, ie. greater than 10 mm in one metre, must be made good prior to installation, to ensure that the insulation boards are installed with a smooth, in-plane finished surface.

14.5 Where surfaces are covered with an existing rendering, it is essential that the bond between the background and the render is adequate. All loose areas should be hacked off and reinstated.

14.6 On existing buildings, purpose-made window sills must be fitted to extend beyond the finished face of the system. New buildings should incorporate suitably deep sills (see Figure 9).

14.7 In new buildings, internal wet work (eg screed or plastering) should be completed and allowed to dry prior to the application of the system.

## 15 Approved installers

Application of the system, within the context of this Certificate, must be carried out by approved installers recommended or recognised by the Certificate holder. Such an installer is a company:

- employing operatives who have been trained and approved by the Certificate holder to install the system
- which has undertaken to comply with the Certificate holder's application procedure, containing the requirement for each application team to include at least one member-operative trained by the Certificate holder
- subject to at least one inspection per annum by the Certificate holder to ensure suitable site practices are being employed. This may include unannounced site inspections.

## 16 Procedure

### General

16.1 Installation of the system must be carried out in accordance with this Certificate and the Certificate holder's current installation instructions.

16.2 Weather conditions should be monitored to ensure correct application and curing conditions. Application of render materials must not be carried out at temperatures below 5°C or above 30°C, or if exposure to frost is likely, and the coating must be protected from rapid drying. Installation should not take place during rainfall or if rain is anticipated. In addition, cementitious renders must not be applied if the temperature is likely to fall below 0°C within 72 hours of completion.

16.3 Where required, a fungicidal wash is applied to the entire surface of the external wall by brush, roller or spray.

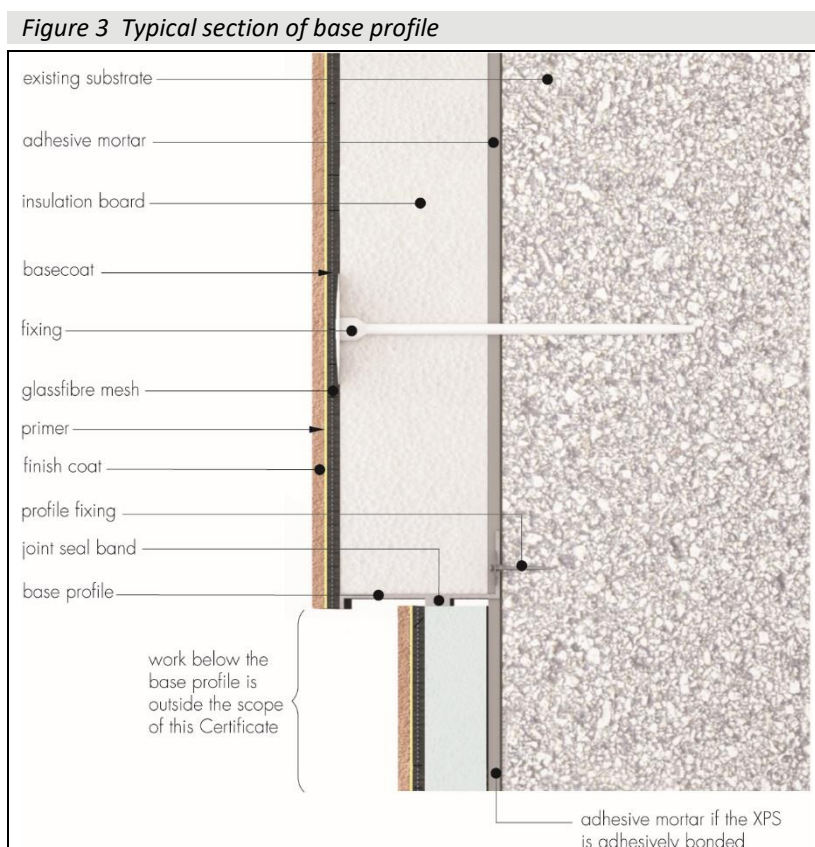
16.4 The primer should be applied as required and appropriately selected for the chosen finish coat (see section 1.6).

16.5 All rendering should be in accordance with the relevant recommendations of BS EN 13914-1 : 2016. The render must be protected from rapid drying and should not be applied on elevations in direct sunlight or where the substrate is hot.

16.6 The difference between 30- and 60-year durability systems is described in section 1. The initial installation procedure that follows (sections 16.7 to 16.22) is common to both types of systems, with the exception in the selection of the material specification of system components (see sections 4.14 and 13.2).

### Positioning and securing insulation boards

16.7 The base profile (see section 4.14) is secured to the external wall above the dpc using the approved profile fixings at approximately 300 mm centres (see Figure 3). Base profile connectors are inserted at all rail joints. Extension profiles are fixed to the front lip of the base profile or stop end channel where appropriate.



16.8 The adhesive is prepared by mixing each bag with the required amount of clean water in a suitable container using a paddle drill mixer to create a paste-like mortar in accordance with the Certificate holder's instructions (see section 1.6).

16.9 The adhesive is applied in a continuous line around the perimeter of the insulation board (at least 30 mm wide) with at least six additional dabs of adhesive (approximately 80 to 120 mm in diameter) distributed uniformly over the remaining surface in order to achieve a 40% coverage. Alternatively, for even and smooth substrates, the whole board can be coated with adhesive using a notched trowel, to produce a coat 2 to 5 mm in thickness. The board should be immediately placed on the substrate and pressed into place.

16.10 The first run of insulation boards is positioned on the base profile with adhesive applied, and pressed firmly against the wall (so the adhesive is evenly distributed). Care should be taken to ensure that all board edges are butted tightly together; alignment must be checked as work proceeds, to achieve a flush finish.

16.11 Subsequent rows of boards are positioned so that the vertical joints are staggered and overlapped at the building corners and so that board joints do not occur within 200 mm of the corners of openings (see Figure 5). The alignment should be constantly checked as work proceeds. Joints between boards greater than 2 mm should be filled with expansion foam approved by the Certificate holder. Gaps greater than 10 mm should be closed by repositioning or, where appropriate, by cutting slivers of insulation board to fit.

16.12 Where existing render is on the wall or dubbing out render has been used, care should be taken when aligning the boards as the effective embedment will be reduced.



16.13 To fit around details such as doors and windows, insulation boards may be cut with a sharp knife or a fine-tooth saw. Purpose-made powder-coated aluminium window sills, which are designed to prevent water ingress and incorporating drips to shed water clear of the system, are fitted (see Figure 9). However, their performance is outside the scope of this Certificate.

16.14 The surface of the boards should be smooth without high spots or irregularities. Any high spots should be removed by lightly planing with a rasp. At all locations where there is a risk of insulant exposure (eg window reveals or eaves), the system must be protected (eg by an adequate overhang or by purpose-made sub-sills, seals or flashing).

16.15 Building corners, door and window heads and jambs are formed using corner profiles, in accordance with the Certificate holder's instructions. Corner profiles are fixed to all building corners. For a 60-year durability, any portion of the corner profile that would remain exposed after the application of the finish coat must be constructed from stainless steel.

16.16 If required, mechanical fixings can be applied through each board (one fixing in the centre) to secure them until the adhesive has stabilised. However, for the application of 60-year systems, one fixing in the centre of the insulation board is a requirement (see Figure 6). Holes are drilled through the boards into the substrate wall, and mechanical fixings are inserted and tapped or screwed firmly into place.

16.17 Installation continues until the whole wall is completely covered including, where appropriate, the building soffits. Window and door reveals should be insulated to minimise the effects of cold bridging.

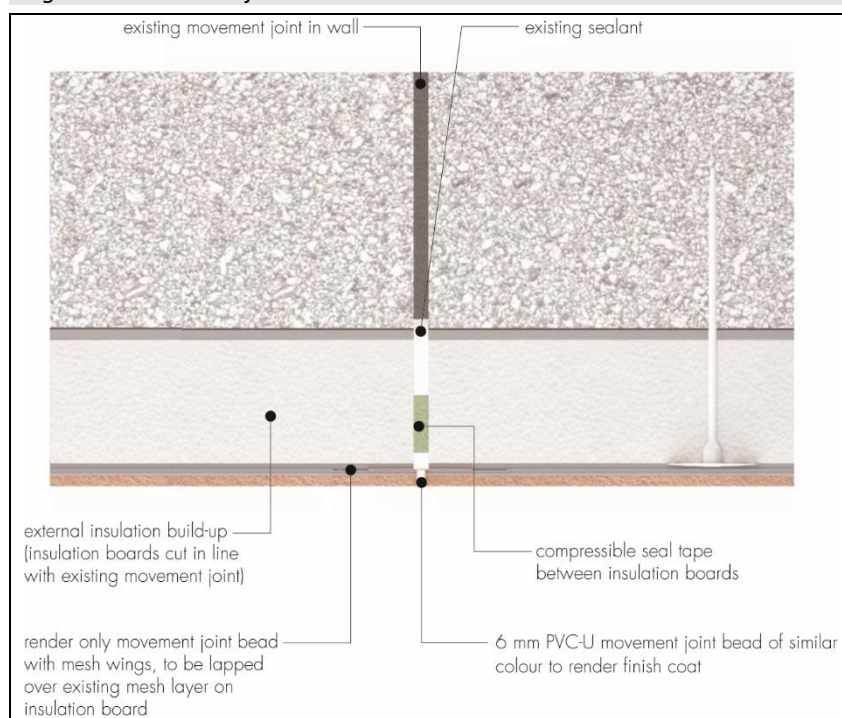
16.18 After sufficient stabilisation of the installed insulation system (normally 48 hours, during which time the insulation should be protected from exposure to extreme weather conditions to prevent degradation), the system is ready for the application of the basecoat, including reinforcing mesh.

16.19 Prior to the application of the basecoat and reinforcement, a bead of silicone sealant is applied at window and door frames, overhanging eaves, gas and electric meter boxes, and wall vents, or where the render abuts any other building material or surface. Alternatively, an appropriate sealing tape may be used between the insulation and the object to provide a weathertight seal.

### **Movement joints**

16.20 Generally, movement joints are not required in the system but, if such a joint is incorporated in the substrate, then movement joints must be carried through the insulation system (see Figure 4).

**Figure 4 Movement joint detail**





## Application of basecoat and reinforcement

16.21 The basecoat is prepared by thoroughly mixing each bag with the required amount of clean water in a suitable container for at least five minutes using a paddle mixer, to create a paste-like mortar in accordance with the Certificate holder's instructions (see section 1.6).

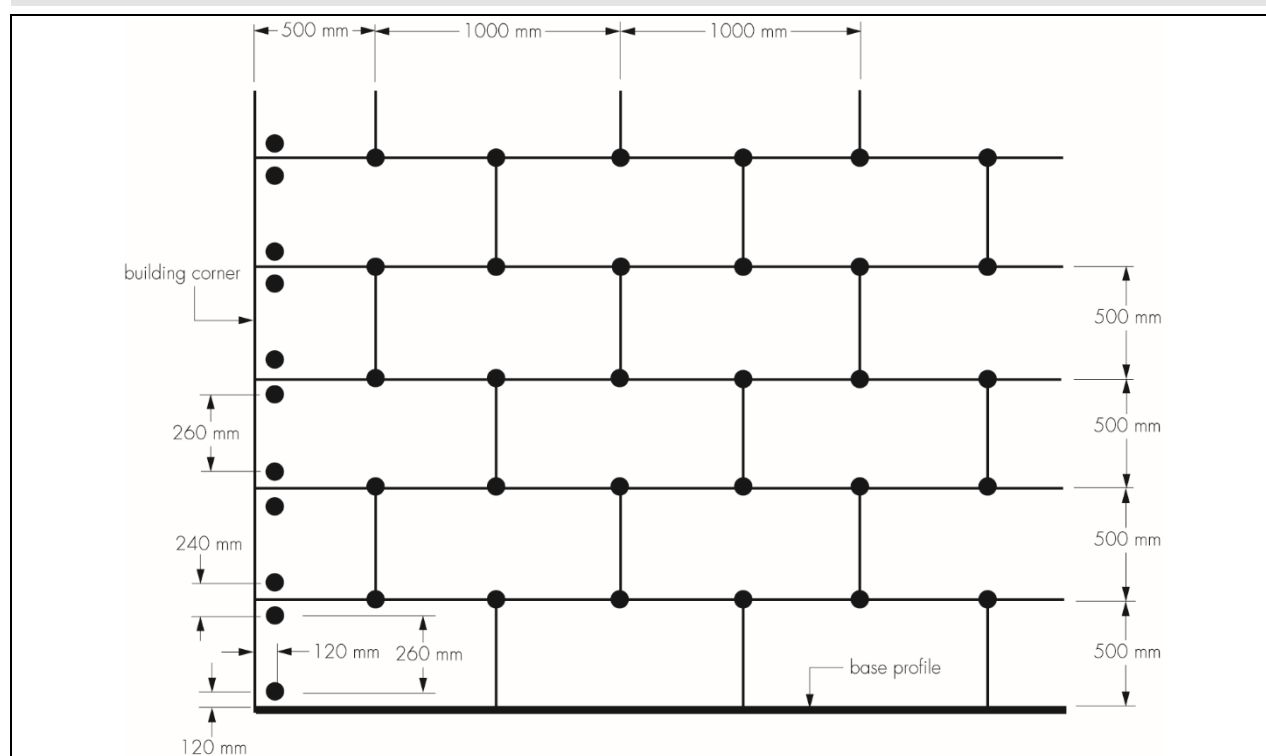
16.22 Before the full application of basecoat (and mesh) over the insulation boards (see section 16.25), reinforcement is provided at the corners of openings. To provide the necessary reinforcement, stress patches of reinforcing mesh (approximately 200 by 200 mm) are diagonally applied with basecoat (see Figure 7).

16.23 Further installation procedures specific to 30- and 60-year durability systems are described in sections 16.24 to 16.28 and 16.29 to 16.36 respectively.

### Application of 30-year durability system — mechanical fixings through the insulation boards

16.24 After the insulation adhesive has set, holes are drilled through the insulation board into the substrate wall to a required depth and mechanical fixings (two fixings per board, equivalent to four fixings per metre square) are inserted and tapped or screwed firmly into place, following the fixing pattern shown in Figure 5. Additional fixings are applied at building corners as shown, in accordance with design requirements.

*Figure 5 Typical arrangement of insulation boards and fixing pattern for 30-year durability – 2 fixings per board*



16.25 The first layer of the basecoat is applied over the insulation boards using a stainless steel trowel, and floated with a Darby float to an approximate thickness of 3 mm. Reinforcing mesh (with its concave surface to the wall) is applied and immediately embedded into the basecoat by trowelling from the centre to the edge, and an additional light coat of basecoat is applied (whilst the initial coat is still wet) to ensure the mesh is free of wrinkles.

16.26 The mesh should be overlapped at joints by at least 100 mm. Further basecoat (approximately 1 mm) is then applied as required, to ensure the mesh is completely covered and that it is placed in the top one third of basecoat.

16.27 A second layer of basecoat is applied to an approximate thickness of 1 mm after the first coat of basecoat has been allowed to dry for approximately 48 hours, resulting in a minimum basecoat thickness of 5 mm.

16.28 The basecoat is left to dry for a further 24 hours before the primer is applied, where required. The primer must be suitable for the required finish coat (see section 1.6) and left to dry for 12 hours (before the application of the finish coat – see sections 16.37 to 16.41).

## Application of 60-year durability system — mechanical fixings through the reinforcement mesh

16.29 After the insulation adhesive has set, the system is ready for the application of basecoat (see section 16.21) and reinforcing mesh.

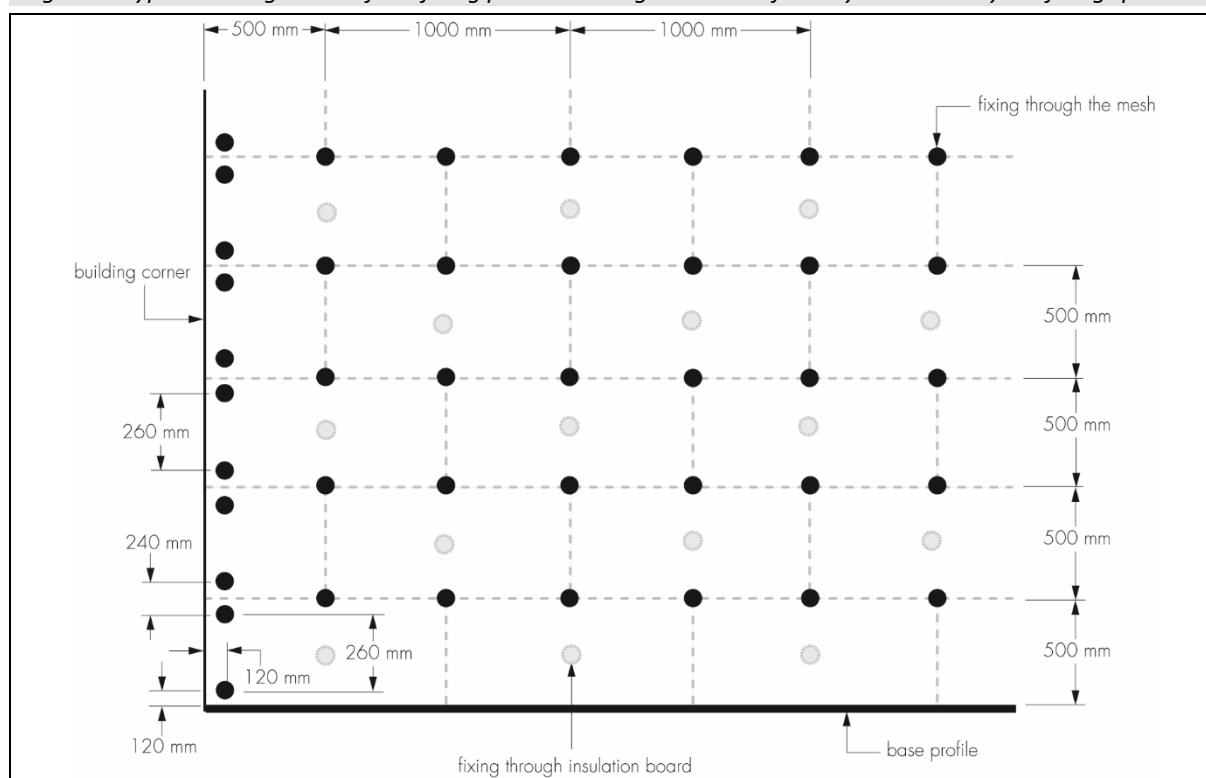
16.30 The first layer of the basecoat is progressively applied over the insulation boards to an approximate thickness of 3 mm, working in 1-metre sections in a vertical or horizontal direction using a stainless steel trowel, and floated with a Darby float.

16.31 The reinforcing mesh (with its concave surface to the wall) is applied and immediately embedded into the basecoat by trowelling from the centre to the edge; an additional light coat of basecoat is applied to ensure the mesh is free of wrinkles.

16.32 The reinforcing mesh should be overlapped at joints by at least 100 mm. Further basecoat (approximately 1 mm) is then applied as required, to ensure the mesh is completely covered and that it is placed in the top one third of basecoat.

16.33 While the basecoat is still wet, holes are drilled through the mesh and insulation boards into the substrate wall to a required depth and mechanical fixings (additional to those initially applied to secure the boards) are inserted and tapped or screwed firmly into place, using the fixing pattern shown in Figure 6. This grid pattern represents 6 fixings per square metre (the initial 1 fixing through the centre of boards, plus an additional 2 fixings per board through the mesh – based on board size 1000 by 500 mm). The fixing plate is deliberately over-driven into the insulation to reduce the protrusion of the plate from the surface of the insulation board.

*Figure 6 Typical arrangement of the fixing pattern through the mesh for 60-year durability – 6 fixings per m<sup>2</sup>*

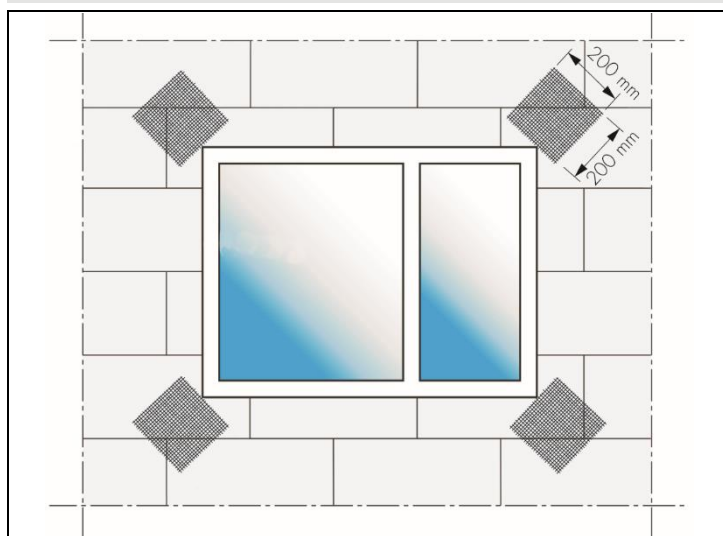


16.34 After the first layer of the reinforced basecoat has been allowed to dry for approximately 60 hours and the fixings have been secured, a second layer of basecoat (to an approximate thickness of 3 mm) is applied, together with a second layer of mesh with its concave surface to the wall. The mesh is immediately embedded into the basecoat by trowelling from the centre to the edge; an additional light coat of basecoat is applied to ensure the mesh is free of wrinkles.

16.35 The second layer of reinforced basecoat is left to dry for an additional 60 hours. Finally, a third layer of basecoat (approximately 1 mm thick) is applied, resulting in a minimum basecoat thickness of 8 mm.

16.36 The basecoat is left to dry for 24 hours before the primer is applied, where required. The primer must be suitable for the required finish coat for the system (see section 1.6) and left to dry for 12 hours before the application of the finishing coat (see sections 16.37 to 16.42).

**Figure 7 Additional reinforcement of openings**



## **Finish coats**

### ***Render finishes***

16.37 The basecoat and primer must be allowed to fully cure for the stated period at each stage of installation covered in this Certificate. Prior to the application of the finishing coat, sealant should be applied as required, as defined in the project-specific specification.

16.38 Finishing coats are applied in accordance with the Certificate holder's instructions (see section 1.6) and by following the design guidelines given in section 4.14 of this Certificate.

### ***Dash Receiver finish***

16.39 The Jubizol dash receiver is trowel-applied over the basecoat to a thickness between 5 and 8 mm. While the dash receiver is still soft, spar dash aggregate of the appropriate size is applied. On completion, the surface must be checked to ensure an even coverage of spar dash aggregate has been achieved. Where necessary, the aggregate should be lightly tamped to ensure a good bond is achieved.

## **General guidelines**

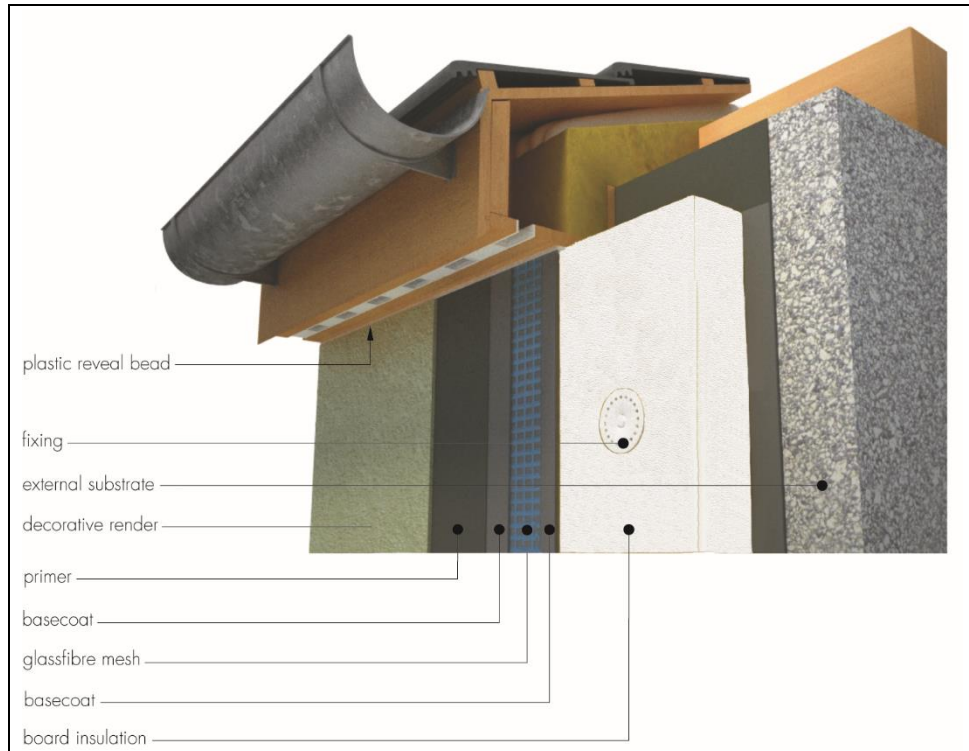
16.40 Continuous surfaces must be completed without a break, so the coatings are always be applied to a wet edge. Care should be taken to prevent the render mortar and brick effect render from either drying too rapidly or freezing.

16.41 Care should be taken in the detailing of the system around openings and projections and at eaves (see Figures 8 and 9) to ensure adequate protection against water ingress and to limit the risk of water penetrating the system. To achieve a 60-year service life, the system is finished against a stainless steel stop bead at reveals, to allow for replacement of windows.

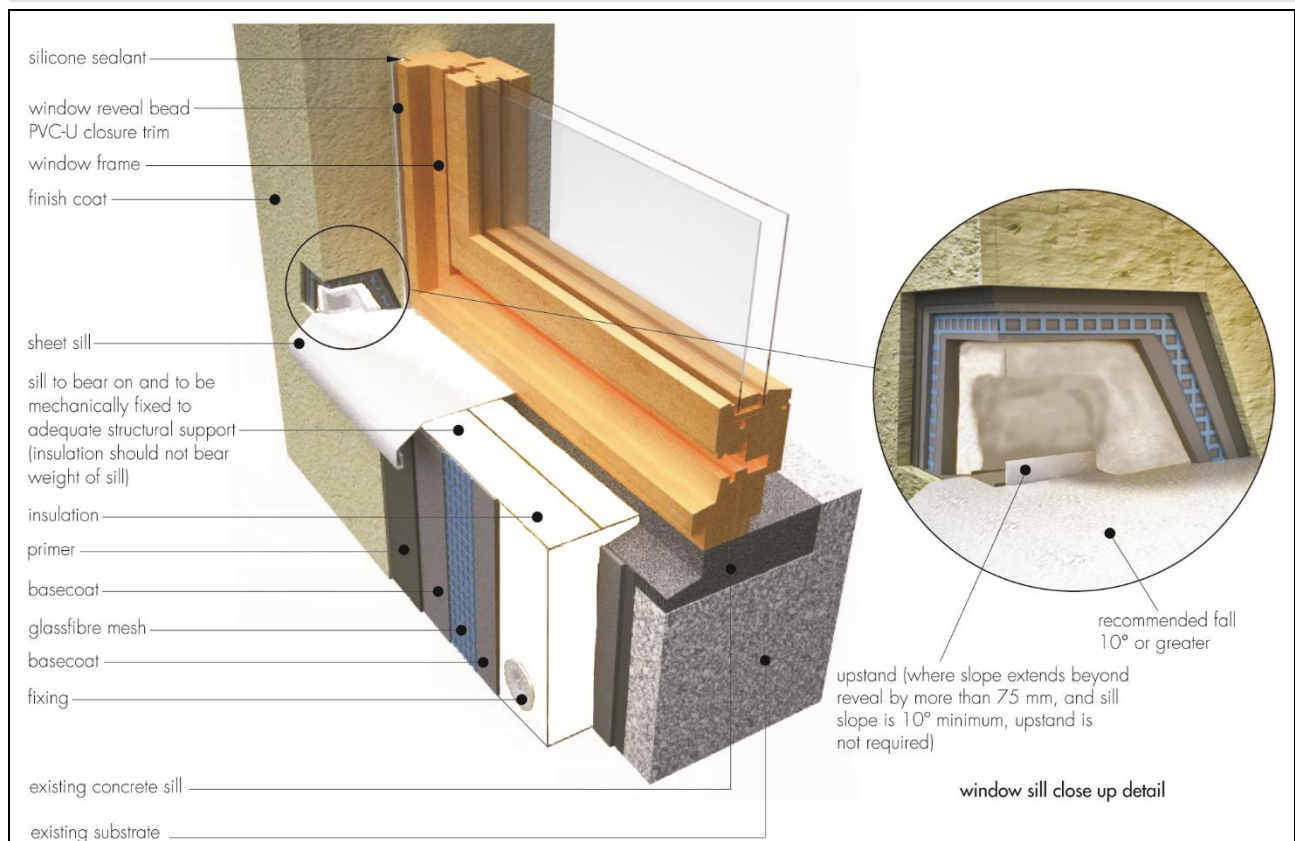
16.42 The finish coat should be allowed to dry thoroughly before painting any of the surrounding features.

16.43 At the top of walls, the system must be protected by a coping, an adequate overhang or by an adequately sealed, purpose-made flashing.

**Figure 8 Roof eaves details**



**Figure 9 Window sill and reveal detail**



### 17 Investigations

17.1 The system was examined to determine:

- fire performance
- hygrothermal performance and resistance to freeze thaw
- bond strength
- resistance to hard body impact
- water vapour permeability
- pull-through resistance of fixing over insulation
- durability
- adequacy of mechanical fixing system
- the risk of interstitial condensation
- thermal conductivity.

17.2 The practicability of installation and the effectiveness of detailing techniques were examined.

17.3 The manufacturing process was evaluated, including the methods adopted for quality control, and details were obtained of the quality and composition of materials used.

## Bibliography

- BRE Report (BR 135 : 2003) *Fire Performance of External Insulation For Walls of Multi-Storey Buildings*
- BRE Report (BR 262 : 2002) *Thermal insulation: avoiding risks*
- BRE Report (BR 443 : 2006) *Conventions for U-value calculations*
- BS 5250 : 2011 *Code of practice for control of condensation in buildings*
- BS 8000-0 : 2014 *Workmanship on construction sites — Introduction and general principles*
- BS 8000-2.2 : 1990 *Workmanship on building sites — Code of practice for concrete work — Sitework with in situ and precast concrete*
- BS 8000-3 : 2001 *Workmanship on building sites — Code of practice for masonry*
- BS EN 1062-1 : 2004 *Paints and Varnishes — Coating Materials and Coating Systems for Exterior Masonry and Concrete — Classification*
- BS EN 1990 : 2002 *Eurocode — Basis of structural design*
- NA to BS EN 1990 : 2002 + A1 : 2005 UK National Annex for *Eurocode — Basis of structural design*
- BS EN 1991-1-4 : 2005 *Eurocode 1 : Actions on structures — General actions — Wind actions*
- NA to BS EN 1991-1-4 : 2005 UK National Annex to *Eurocode 1 : Actions on structures — General actions — Wind actions*
- BS EN 1992-1-1 : 2004 + A1 : 2014 *Eurocode 2 — Design of concrete structures — General rules and rules for buildings*
- NA to BS EN 1992-1-1 : 2004 + A1 : 2014 UK National Annex to *Eurocode 2 — Design of concrete structures — General rules and rules for buildings*
- BS EN 1996-1-1 : 2005 *Eurocode 6 — Design of masonry structures — General rules for reinforced and unreinforced masonry structures*
- NA to BS EN 1996-1-1 : 2005 UK National Annex to *Eurocode 6 — Design of masonry structures — General rules for reinforced and unreinforced masonry structures*
- BS EN 1996-2 : 2006 *Eurocode 6 : Design of masonry structures — Design considerations, selection of materials and execution of masonry*
- NA to BS EN 1996-2 : 2006 UK National Annex to *Eurocode 6 — Design of masonry structures — Design considerations, selection of materials and execution of masonry*
- BS EN 10088-2 : 2014 *Stainless steels — Technical delivery conditions for sheet/plate and strip of corrosion resisting steels for general purposes*
- BS EN 12524 : 2000 *Building materials and products — Hygrothermal properties — Tabulated design values*
- BS EN 13163 : 2012 *Thermal insulation products for buildings — Factory made expanded polystyrene (EPS) products — Specification*
- BS EN 13501-1 : 2007 *Fire classification of construction products and building elements — Classification using test data from reaction to fire tests*
- BS EN 13914-1 : 2016 *Design, preparation and application of external rendering and internal plastering — External rendering*
- BS EN ISO 6946 : 2017 *Building components and building elements — Thermal resistance and thermal transmittance — Calculation method*
- BS EN ISO 9001 : 2015 *Quality management systems — Requirements*
- BS EN ISO 14001 : 2015 *Environmental management systems — Requirements with guidance for use*
- EAD 330196-00-0604 : 2016 *Plastic anchor for fixing of External Thermal Insulation Composite Systems with renderings*
- EOTA TR051 : 2016 *Recommendations for job-site tests of plastic anchors and screws*
- ETAG 004 : 2013 *Guideline for European Technical Approval of External Thermal Insulation Composite Systems (ETICS) with Rendering*

## Conditions of Certificate

### Conditions

1. This Certificate:

- relates only to the product that is named and described on the front page
- is issued only to the company, firm, organisation or person named on the front page – no other company, firm, organisation or person may hold or claim that this Certificate has been issued to them
- is valid only within the UK
- has to be read, considered and used as a whole document – it may be misleading and will be incomplete to be selective
- is copyright of the BBA
- is subject to English Law.

2. Publications, documents, specifications, legislation, regulations, standards and the like referenced in this Certificate are those that were current and/or deemed relevant by the BBA at the date of issue or reissue of this Certificate.

3 This Certificate will be displayed on the BBA website, and the Certificate Holder is entitled to use the Certificate and Certificate logo, provided that the product and its manufacture and/or fabrication, including all related and relevant parts and processes thereof:

- are maintained at or above the levels which have been assessed and found to be satisfactory by the BBA
- continue to be checked as and when deemed appropriate by the BBA under arrangements that it will determine
- are reviewed by the BBA as and when it considers appropriate.

4. The BBA has used due skill, care and diligence in preparing this Certificate, but no warranty is provided.

5. In issuing this Certificate the BBA is not responsible and is excluded from any liability to any company, firm, organisation or person, for any matters arising directly or indirectly from:

- the presence or absence of any patent, intellectual property or similar rights subsisting in the product or any other product
- the right of the Certificate holder to manufacture, supply, install, maintain or market the product
- actual installations of the product, including their nature, design, methods, performance, workmanship and maintenance
- any works and constructions in which the product is installed, including their nature, design, methods, performance, workmanship and maintenance
- any loss or damage, including personal injury, howsoever caused by the product, including its manufacture, supply, installation, use, maintenance and removal
- any claims by the manufacturer relating to UKCA, UKNI or CE marking.

6. Any information relating to the manufacture, supply, installation, use, maintenance and removal of this product which is contained or referred to in this Certificate is the minimum required to be met when the product is manufactured, supplied, installed, used, maintained and removed. It does not purport in any way to restate the requirements of the Health and Safety at Work etc. Act 1974, or of any other statutory, common law or other duty which may exist at the date of issue or reissue of this Certificate; nor is conformity with such information to be taken as satisfying the requirements of the 1974 Act or of any statutory, common law or other duty of care.

#### British Board of Agrément

1<sup>st</sup> Floor, Building 3, Hatters Lane  
Croxley Park, Watford  
Herts WD18 8YG

©2024

tel: 01923 665300  
clientservices@bbacerts.co.uk  
[www.bbacerts.co.uk](http://www.bbacerts.co.uk)