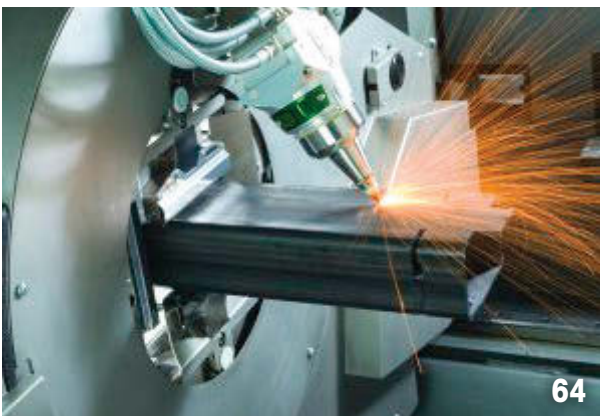


BASE UNIT AND AVAILABLE OPTIONS- K-2400HD



Base unit, K-2400hd, 10 Removable Spar Mobile Vehicle Security Barrier, internal 12mm galvanized cable, cable end clevis, easily disassembled; not including hitch arrangement (see hd228, hd229,hd230).

Kit Number: hd200
Kit Weight: 154kgs

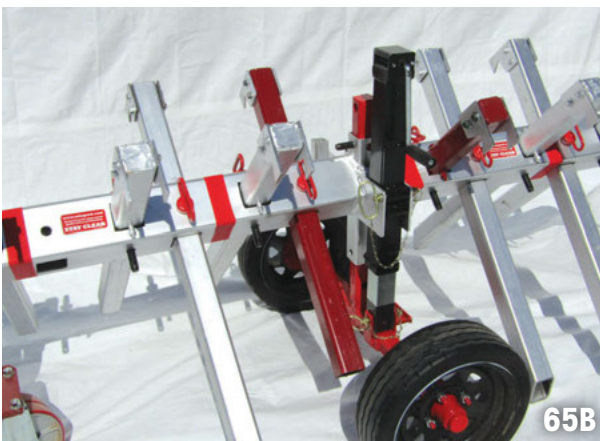


Virtual/real time manufacturing of our k2400hd splaying spar components, assuring the highest precision+produced efficiently-on the Trumpf TruLaser 7000 tube laser. It's fast and clean.



Transport kit including handle, dual wheel adjustable height castor, axle with 450mm diameter flat proof wheel/tires, axle screw jack, hardware.

Kit Number: hd208
Kit Weight: 58.5kgs



Base unit (hd200), Transport kit (hd208); height adjusting+removable screwjack is mountable on either left or right side of barrier.

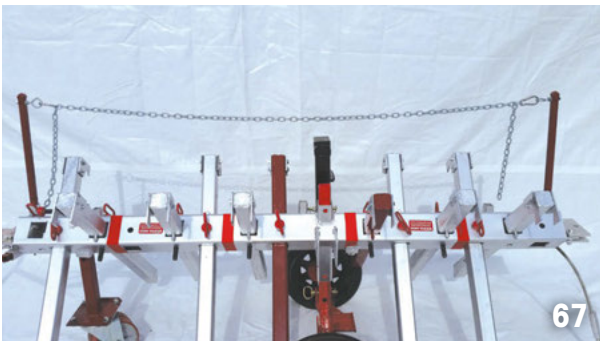
BASE UNIT AND AVAILABLE OPTIONS- K-2400HD



Twin post kit, chain, snap pins, snap hooks.

Kit Number: xd 220

Kit Weight: 5.1kgs



Base unit (hd200), Transport kit (hd208),

Twin Post kit (xd220).



Double sided stop sign, hardware.

Kit Number: xd114

Kit Weight: 3.5kgs



Double sided no walk sign, hardware.

Kit Number: xd 116

Kit Weight: 3.5kgs

BASE UNIT AND AVAILABLE OPTIONS- K-2400HD



Double sided directional arrow sign with post, hardware.

Kit Number: xd 118

Kit Weight: 3.4kgs



Solar powered red light, off-steady-flashing, charges while off, includes cover sock, post, hardware.

Kit Number: xd 122

Kit Weight: 3.6kgs



Spar pin and hair clip, 150mm x 18mm diameter.

Kit Number: xd 123

Kit Weight: N/A



Long Link Lashing chain, 3 meters, 12mm diameter.

Kit Number: xd 124

Kit Weight: 9.6kgs

BASE UNIT AND AVAILABLE OPTIONS- K-2400HD

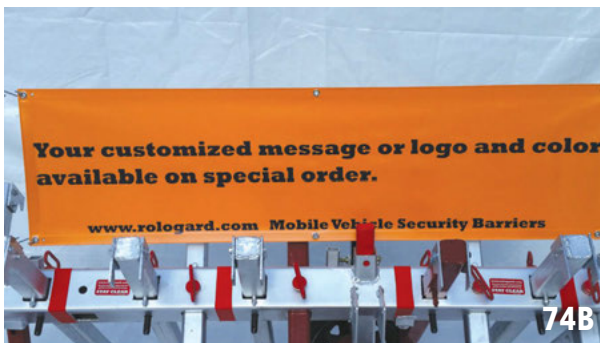


Banner, mesh, Do Not Cross, posts (2) and hardware, approximate dimensions- 375mm x 1500mm.

Kit Number: xd 150

Kit Weight: 3.0kgs

Note: Banners are available in 20+ languages, please contact factory for additional information.



Banner, mesh, Customized Logo, posts (2) and hardware, approximate dimensions-375mm x 1500mm.

Kit Number: xd 152

Kit Weight: 3.0kgs

Note: Banners are available in 20+ languages, please contact factory for additional information. Click on the rologard.com website, rologard photos tab, for additional examples.



Banner, mesh, Random Placement, posts (2) and hardware, approximate dimensions-375mm x 1500mm.

Kit Number: xd 154

Kit Weight: 3.0kgs

Note: Banners are available in 20+ languages, please contact factory for additional information.

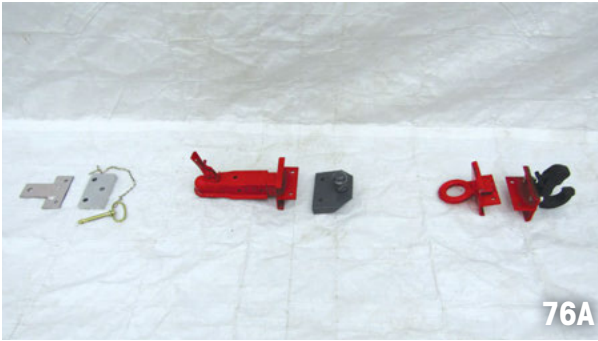


Storage box, fork pockets on all four sides, approximate dimensions-75cm high x 120cm wide x 2.7m long. This storage box is usually used with the k2400hd barriers. Color may vary.

Kit Number: xd 181

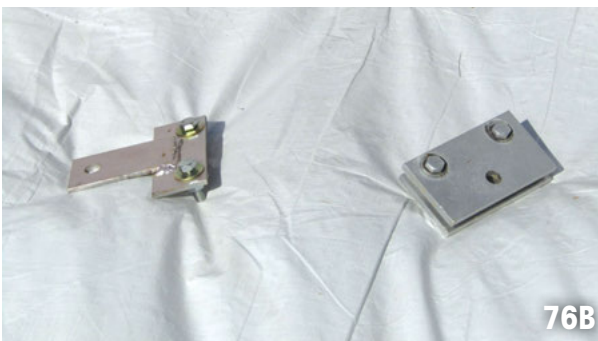
Kit Weight: 358kgs

BASE UNIT AND AVAILABLE OPTIONS- K-2400HD



There are 3 hitch arrangements that complement the transport kit. The 3 available arrangements are: tang and hammerstrap, coupler and ball, pintle ring and hook.

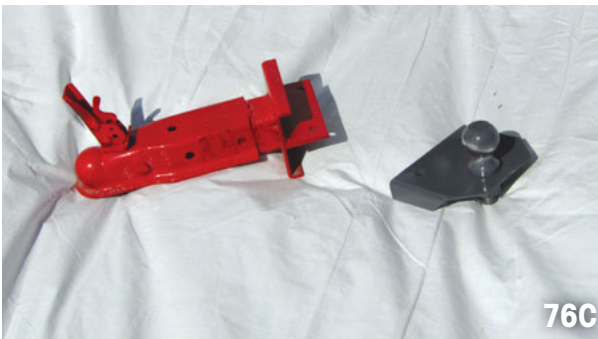
****When ordering the transport kit, indicate which hitch arrangement you want (one hitch arrangement is included with the transport kit).***



Tang and hammerstrap arrangement, hardware.

Kit Number: hd 228

Kit Weight: 1.9kgs



50mm coupler and 50mm (2") ball arrangement, hardware.

Kit Number: hd229

Kit Weight: 4.2kgs



75mm pintle ring and latchable hook arrangement, hardware.

Kit Number: hd 230

Kit Weight: 10.7kgs

BASE UNIT AND AVAILABLE OPTIONS- K-2400HD



Replacement wheel/tire for hd 208 transport kit.

Kit Number: rp-h74

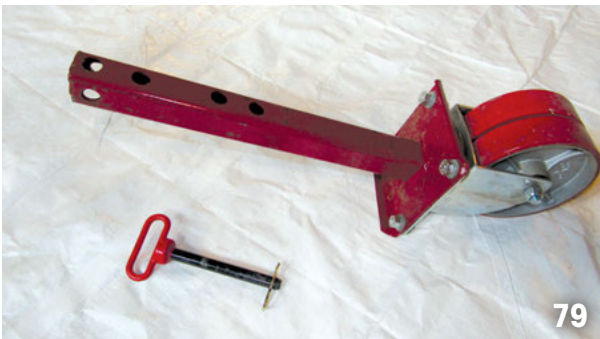
Kit Weight: 5.8kgs



Replacement hub, spindle, bearings, seal, nut, dust cap, cotter pin, assembly for hd 208 transport kit.

Kit Number: rp-h78

Kit Weight: 4.9kgs



Replacement dual wheel castor and pin for transport kit hd 208. RGC may substitute flat proof rubber/poly tire where appropriate.

Kit Number: rp-h69

Kit Weight: 14.2kgs



Replacement handle for transport kit hd 208, hardware.

Kit Number: rp-h71

Kit Weight: 2.8kgs

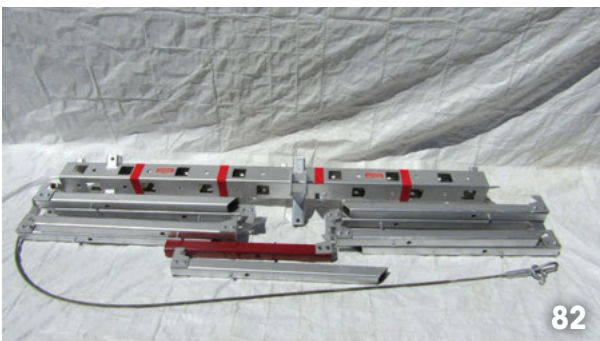
BASE UNIT AND AVAILABLE OPTIONS- K-2400HD



Replacement screwjack w/2 drop pins.

Kit Number: rp-h79

Kit Weight: 6.6kgs



Disassembled base unit (hd200). Maximum single piece weight: 35.2 kgs



Base unit (hd200), Transport kit (hd 208), Twin post chain kit (hd220), Double sided stop sign (xd114), Solar powered light (xd122), Banner-Do Not Cross (xd150).



K2400hd: Spar cap (top), rubber, with hardware.

K2400hd: Spar boot (bottom), LLDPE, plastic w/pin.

Kit Number: rph16 (pn 14059) assembly, spar cap

Kit Number: rph 17 (pn 14059) assembly, spar boot