



**GEC**  
**DURHAM**  
Industries

## Current Transformers High Accuracy 0.15S

**Engineered for Accuracy. Built for Utility Demands.**

Proudly Engineered, Designed, and Manufactured in the U.S.A.



P.O. Box 908, Lebanon, MO 65536  
417.532.7121 • [www.DurhamUSA.com](http://www.DurhamUSA.com)

# TYPE: AB HIGH ACCURACY

1%

Through the Rating Factor

Type AB2Y



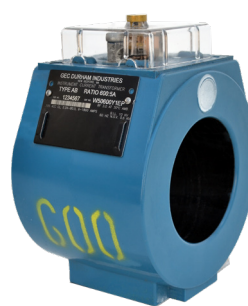
W50200Y1EP

Type AB5Y



W50500Y1EP

Type AB6Y



W50600Y1EP

Type AB10Y



W51000Y1EP

Model	Primary	Catalog Number	Burden 0.15S Accuracy Class	0.15% Accuracy 30C	Rating Factor 30C	Rating Factor 55C	Weight	Base	Bar
AB2Y	200	W50200Y1EP	E0.04, E0.2, B0.1, B0.2	2-800 AMPS	4.0	3.0	9 Lbs	No Base	No Bar
AB5Y	500	W50500Y1EP	E0.04, E0.2, B0.1, B0.2, B0.5	5-2000 AMPS	4.0	3.0	9 Lbs	No Base	No Bar
AB6Y	600	W50600Y1EP	E0.04, E0.2, B0.1, B0.2, B0.5	6-1800 AMPS	3.0	2.0	9 Lbs	No Base	No Bar
AB10Y	1000	W51000Y1EP	E0.04, E0.2, B0.1, B0.2, B0.5	10-3000 AMPS	3.0	2.0	6 Lbs	No Base	No Bar

Type AB21Y



B502050Y1EP

Type AB51Y



B505053Y1EP

Type AB61Y



B506051Y1EP

Type AB101Y



B510055Y1EP

Model	Primary	Catalog Number	Burden 0.15S Accuracy Class	0.15% Accuracy 30C	Rating Factor 30C	Rating Factor 55C	Weight	Base	Bar
AB21Y	200	B502050Y1EP	E0.04, E0.2, B0.1, B0.2	2-800 AMPS	4.0	3.0	11 Lbs	No Base	Primary Bar 2 Hole
AB51Y	500	B505053Y1EP	E0.04, E0.2, B0.1, B0.2, B0.5	5-2000 AMPS	4.0	3.0	13 Lbs	No Base	Primary Bar 4 Hole
AB61Y	600	B506051Y1EP	E0.04, E0.2, B0.1, B0.2, B0.5	6-1800 AMPS	3.0	2.0	13 Lbs	No Base	Primary Bar 2 Hole
AB101Y	1000	B510055Y1EP	E0.04, E0.2, B0.1, B0.2, B0.5	10-3000 AMPS	3.0	2.0	11 Lbs	No Base	Primary 3 Bar 4 Hole

Specifications subject to change without notice.

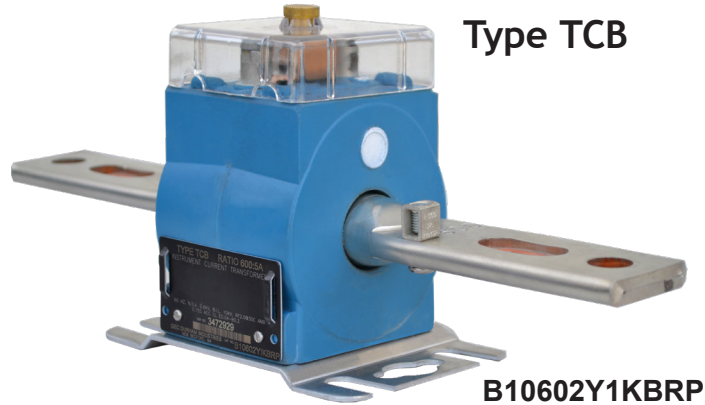
# TYPE: TCB & AP HIGH ACCURACY

1%

Through the Rating Factor

## Standard Features For All CTs:

- 60 Hertz, 600 VAC, 10KV Bil.
- Includes clear sealable secondary terminal cover.
- Includes a retained shorting device.
- Includes certified test record with each transformer.
- Meets IEEE C57.13.6 Standard for High-Accuracy Instrument Transformers 1% Through Rating Factor



Model	Primary	Catalog Number	Burden 0.15S Accuracy Class	0.15% Accuracy 30C	Rating Factor 30C	Rating Factor 55C	Weight	Base	Bar
TCB31Y	300	B10302Y1KBRP	E0.04, B0.1	3-900 AMPS	3.0	2.0	4.5 Lbs	Slotted Base	Fixed Primary Bar 2 Hole
TCB31Y	300	B103021Y1KBRP	E0.04, B0.1	3-1200 AMPS	4.0	3.0	4.5 Lbs	Slotted Base	Fixed Primary Bar 2 Hole
TCB6Y1	600	B10602Y1KBRP	E0.04, E0.2, B0.1, B0.2	6-1200 AMPS	2.0	1.5	4.5 Lbs.	Slotted Base	Fixed Primary Bar 2 Hole

1%

Through the Rating Factor



Model	Primary	Catalog Number	Burden 0.15S Accuracy Class	0.15% Accuracy 30C	Rating Factor 30C	Rating Factor 55C	Rating Factor 85C	Weight
AP5Y	500	W60500Y1	E0.04, E0.2, B0.1, B0.2	5-2000 AMPS	4.0	4.0	2.5	7 Lbs
AP10Y	1000	W61000Y1	E0.04, E0.2, B0.1, B0.2, B0.5	10-3000 AMPS	3.0	2.0	1.5	7 Lbs
AP20Y	2000	W62000Y1	E0.04, E0.2, B0.1, B0.2, B0.5	20-4000 AMPS	2.0	2.0	1.0	7 Lbs

Specifications subject to change without notice.

# TYPE: AD & ACL HIGH ACCURACY

5%

Through the Rating Factor

## Standard Features For All CTs:

- 60 Hertz, 600 VAC, 10KV Bil.
- Includes clear sealable secondary terminal cover.
- Includes a retained shorting device.
- Includes certified test record with each transformer.
- Meets IEEE C57.13.6 Standard for High-Accuracy Instrument Transformers 1% Through Rating Factor

Type AD



W82000YEP

Model	Primary	Catalog Number	Burden 0.15S Accuracy Class	0.15% Accuracy 30C	Rating Factor 30C	Rating Factor 55C	Weight
AD20Y	2000	W82000YE	E0.04, E0.2, B0.1, B0.2, B0.5, B0.9	100-5000 AMPS	2.5	1.75	17 Lbs.
AD20Y	2000	W82000YEP	E0.04, E0.2, B0.1, B0.2, B0.5, B0.9	100-5000 AMPS	2.5	1.75	17 Lbs.

1%

Through the Rating Factor

Type ACL



W93000Y1EP

Type ACL



W93000Y1X

Model	Primary	Catalog Number	Burden 0.15S Accuracy Class	0.15% Accuracy 30C	Rating Factor 30C	Rating Factor 55C	Weight
ACL30Y	3000	W93000Y1E	E0.04, E0.2, B0.1, B0.2, B0.5, B0.9, B1.8	30-6000 AMPS	2.0	1.5	24 Lbs.
ACL30Y	3000	W93000Y1EP	E0.04, E0.2, B0.1, B0.2, B0.5, B0.9, B1.8	30-6000 AMPS	2.0	1.5	24 Lbs.
ACL30Y	3000	W93000Y1X	E0.04, E0.2, B0.1, B0.2, B0.5, B0.9, B1.8	30-6000 AMPS	2.0	1.5	24 Lbs.

Specifications subject to change without notice.