

PITMAN CONTRACTING



**Engineering, Earthmoving,
Construction, Haulage & Safety**



Welcome to Pitman Contracting

Operating throughout Western Victoria, Pitman Contracting offer a professional and friendly service with competitive rates. Specialising in all aspects of earth moving, bulk haulage and civil works. It is our knowledge, technology and experience that separates us from the rest.

You can expect nothing but the best of a wide range of earthworks, laser levelling and drainage for farms, road construction and building sites for the construction industry. Our services use the latest GPS equipment to ensure your job is handled with the highest level of professionalism and accuracy.

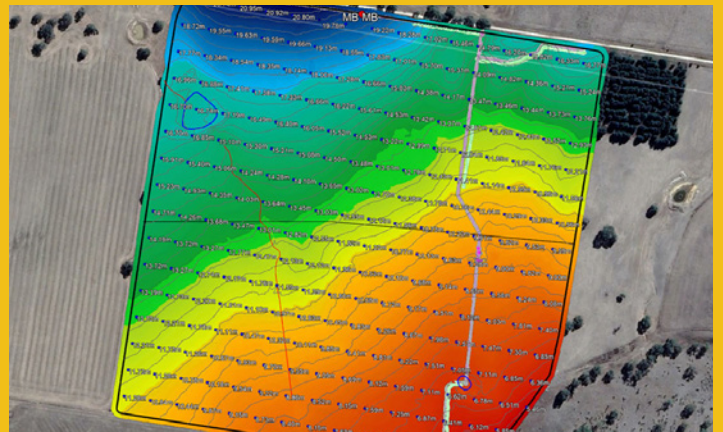
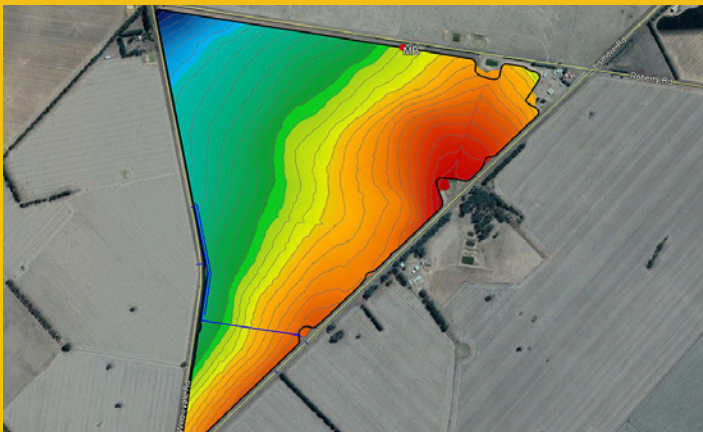
We provide consultancy in surveying of your land to best divert water, using the latest techniques to ensure your land is working in its most efficient way.





Civil Works and Surveying

- Drainage design and construction
- Civil works for subdivisions
- Surveying
- Hard Stands





Bulk Haulage Services

- Site cuts
- Professional excavation and site development services for Farmers, Shire & Property Developers
- Dam & Drainage Construction
- Quarry materials
- Gravel to site
- Water Haulage



Earth Moving and Laser Leveling Services

From simple earthwork tasks to large-scale, complex levelling and dam creation, Pitman Contracting can help.

Using the latest technology such as 3d topography data, GPS and laser levelling, your next project can be executed with military precision.

- Bulk Earthworks
- Laser Leveling
- Tree stump removal
- New dams, dam repairs and cleaning
- Driveways and roads
- Site preparation
- Footings and foundations



Major Construction

including sheds & major framework.

Concrete works also provided.



Safety

We maintain high Work Health & Safety standards according to Government & Industry legislation. We ensure personal protective equipment (PPE) is used and worn when required by all staff to protect them from harm on site.

We undertake inductions and complete Work Permits and Risk Assessments, ensuring correct identification of hazards. Our staff have the ability to identify potential hazards in the workplace and immediately rectify the issue, striving to achieve an accident-free worksite. They also have the ability to all ensure parts and products are fitted as per quality assurance standards and legislation.

We've worked with

- Goldwind Stockyard Hill Windfarm
- Ausnet 500Kv Transmission Line Tower Collapse Emergency Works
- Pyrenees Shire
- ZINFRA Stockyard Hill Transmission Line
- Vic Roads
- DE Quarry



PITMAN CONTRACTING

Contact us

If you'd like to discuss an upcoming project, please call us on **0459 990 734** and we will be happy to go through your project in detail to ensure an efficient and professional result.