

2  4  2  2 

Floor Area 199m<sup>2</sup>

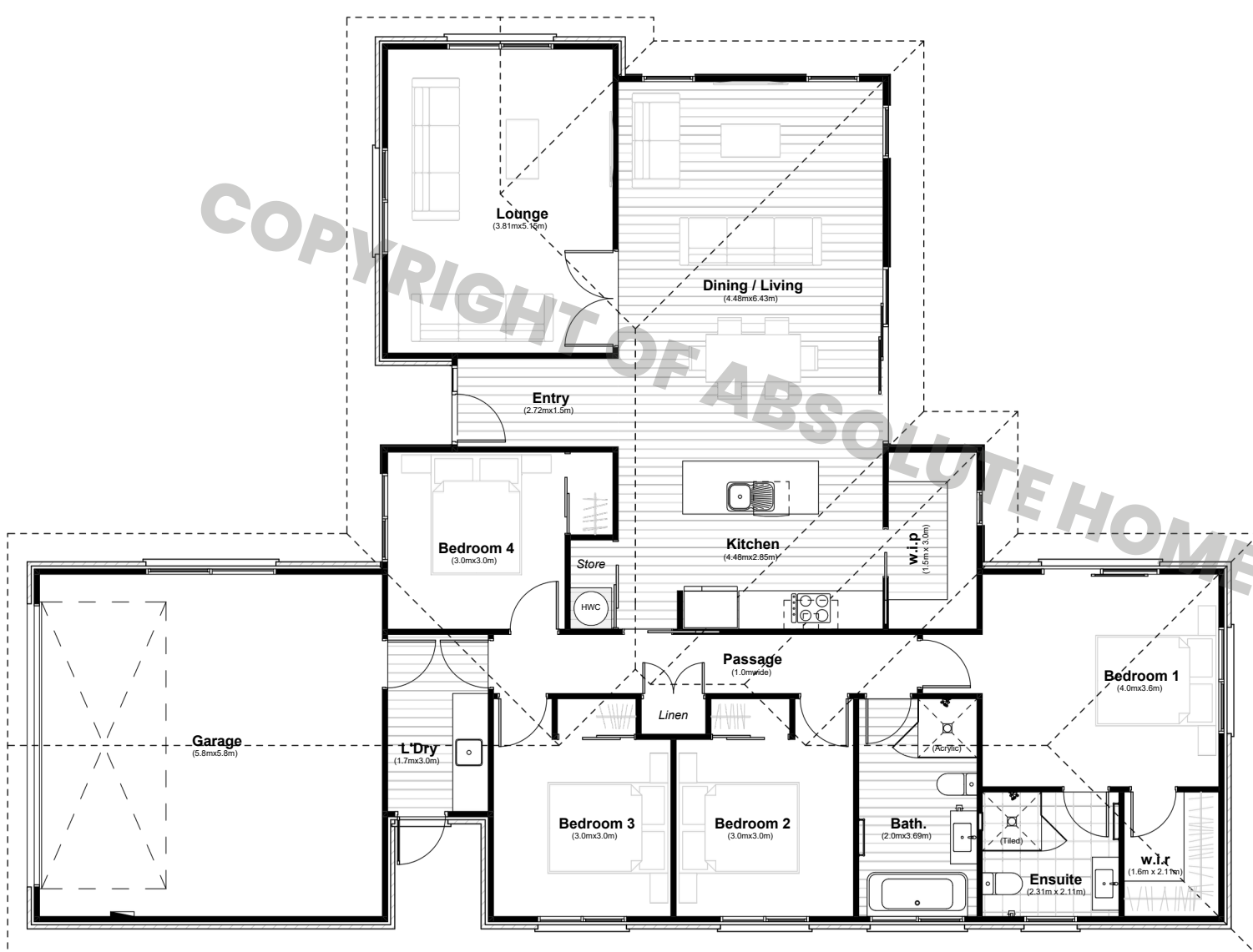
# Isla Plan.

Lifestyle Range



\*artist impression

The 'Isla' plan is a spacious four bedroom home designed with family living in mind. The kitchen includes a generous walk-in pantry and additional storage, offering plenty of space for organisation. A separate, closed-off living area provides the perfect setting for family activities or relaxation. The master bedroom features a walk-in wardrobe and a tiled ensuite, creating a private retreat within this thoughtfully designed home. The 'Marlow' plan combines practicality with comfort, making it an ideal choice for growing families.



 **Absolute  
Homes**