

# Oban and Lorn Angling Club



## Fishing Guide

And Other Useful Information

Please leave this book for others to enjoy.



The Oban and Lorn Angling Club was founded in the 1940s but fell away in the fifties. In 1972 the club was reformed by a group of keen anglers to promote fly-fishing links in the Lorn of Argyll with the leases of seven lochs.

Today the club has ten boats on eight lochs with additional lochs available for bank fishing only. We have further access to one side of the River Awe below the weir on the Taynuilt side for season ticket holders.

Our lochs vary from small puddles to large waters each having its own features containing mainly wild Brown Trout though there is a chance of catching an Artic Char in some of the lochs; also escaped Rainbow Trout, Perch and Pike in Loch Avich.

All the wild trout respond to the traditional fly patterns.

Outboards to a maximum of 5hp allowed where boats are available on the lochs.

Our club house has a meeting room and workshop which is used to repair the boats in the off season with a further compound for storing the boats and trailers. We are always looking for members to help out with the repairs and upkeep of the club house and boats.

## Rules

All those who fish club waters should show consideration for others who live by or enjoy the countryside by observing the following rules.

The Season for Brown Trout Runs 15th March to the 6th October.

1. Do not park your car where it causes an obstruction.
2. Shut all gates.
3. Do not take dogs onto the hill.
4. Do not light fires, drop cigarette ends or matches.
5. Take all litter home, including plastic bags and discarded monofilament.
6. Do not disturb stock, interfere with wildlife or destroy plants.
7. No fish under 10 Inches to be removed
8. No Spinners\*
9. No Bait Fishing/worming\*
10. No Bubble floats\*

*\*Children under the age of 16 are allowed to fish with any legal method when accompanied by a paying adult.*

Try to ensure your own safety and comfort on the hills. It can snow until the end of May and there can be frost from the beginning of August. Windproof and waterproof clothing should always be worn or carried. It is advisable to wear stout walking boots or shoes and carry waders to the loch. Wear something which is easily seen. Have a complete change of clothing in the car. If you must go fishing alone always tell someone where you are going and when you intend to return.

Always keep to the access routes as shown on the maps and return by the route you came.

Avoid steep slopes and flat marshy ground with peat bogs. Carry with you a map, compass, torch, whistle and chocolate to replace lost energy. In the summer it is always advisable to have insect repellent and clothing with a hood to combat midges and horseflies.

The most successful trout flies are the Butcher, Peter Ross, Greenwell's Glory and Grouse and Claret size 10-14. Butchers, Teal wing flies and Zulus size 8-10 are best for salmon and sea trout.

PLEASE FILL IN CATCH RETURNS FOR ALL WATERS - EVEN IF YOU BLANK

© 2021 Copyright Notice: No information contained within this guide may be reproduced without the permission of the Author - Jim Grout, Oban and Lorn Angling Club

Check our website for updates

OLAC Website: <http://www.obanandlorn-anglingclub.co.uk/>

email address: [mail@olac.org.uk](mailto:mail@olac.org.uk)

Facebook: <https://www.facebook.com/pages/Oban-and-Lorn-Angling-Club/347282711979239>

## CHARGES FOR TROUT FISHING 2020

Permits:

£10 per Day

£25 for 3 Days

£45 per week

£75 per season (£55 for concessionary members)

Boats can be booked at no charge by those taking out weekly permits or full members. Day and three-day permit holders are not permitted to book boats.

Life jackets are mandatory for all boat users and it is the responsibility of the boat user to provide them.

NOTE: Maximum of three persons per boat

## **Annual (Season) Membership Renewal available from:**

The Anglers Corner tackle shop, Oban

Full & Associate Membership - £75 per year; £55 per year for concessionary members i.e. registered disabled/students/unemployed/over 65s. Juniors are free.

We are pleased that once lockdown has been lifted and The Anglers' Corner reopens, Mario di Ciacca has offered to issue cards and take payment for subscriptions (cash only, please). Until that time, you are requested to pay your subscription by other means. You can join via the website: visit <http://www.obananlorn-anglingclub.co.uk> and click the "Join Us" button on the home page. You may also pay directly to our bank account: "Oban and Lorn Angling Club", account number 16034069, sort code 80-22-60 please use your name as a reference when doing so. PayPal is another option if you use it: pay to [olac@ymail.com](mailto:olac@ymail.com). New season members and members renewing after May 31<sup>st</sup> 2020 should apply for permits to the Oban and Lorn Angling Club Treasurer, Iain Moody on 01631 563654.

### **Contacts:**

President: Jonathan Anglesea 01631 750214

Secretary: Allan Coutts 01852 300231

Treasurer: Ian Moody 01631 563654

Boat Bookings: Booking is not complete until confirmed by boat recorder, Allan Coutts, who can be contacted by one of the following methods and will supply padlock codes.

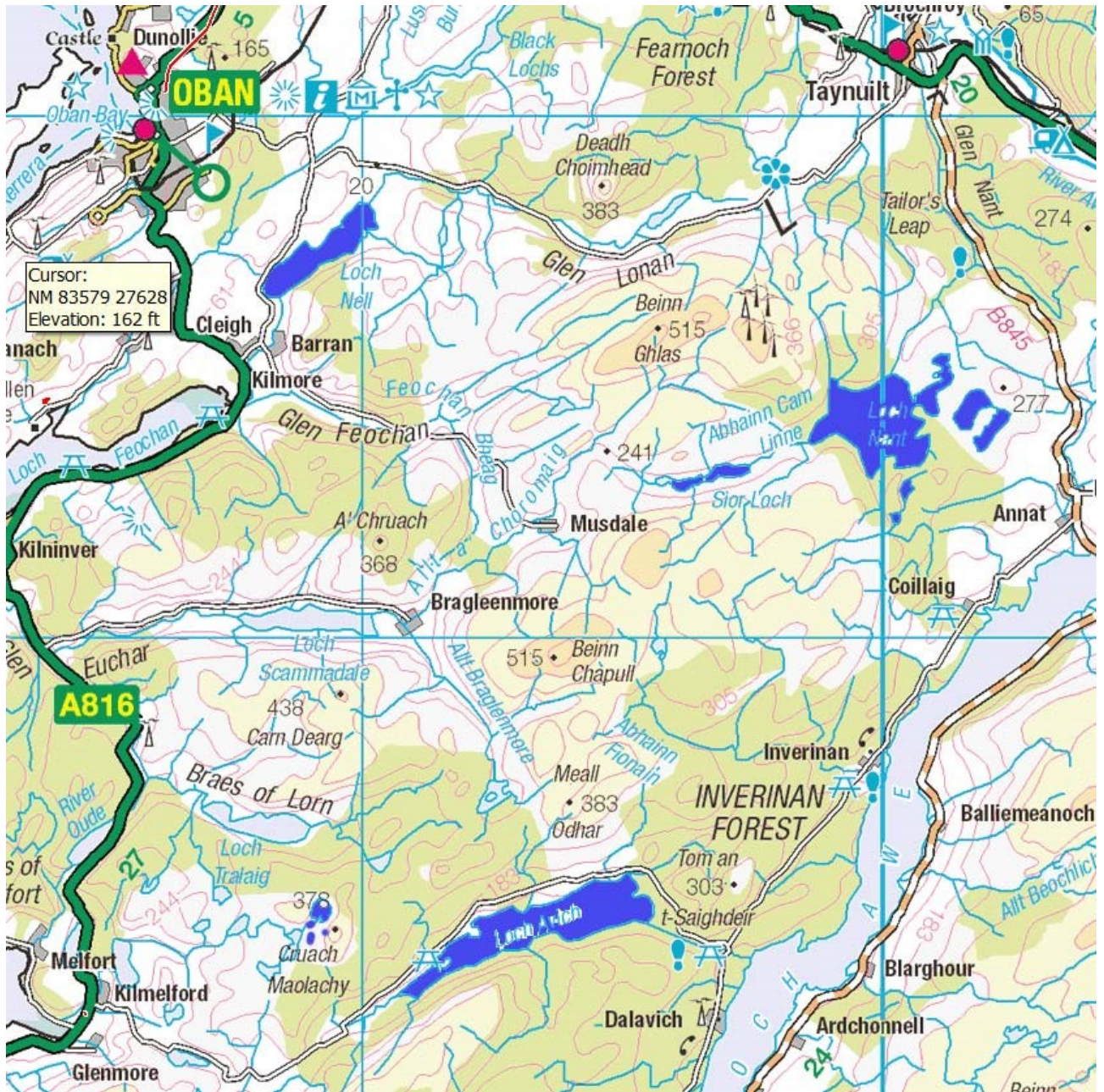
<http://www.obanandlorn-anglingclub.co.uk/experiences#BOATBOOKING>

email on [bookings@olac.org.uk](mailto:bookings@olac.org.uk)

Or text or voice message on 07724521806

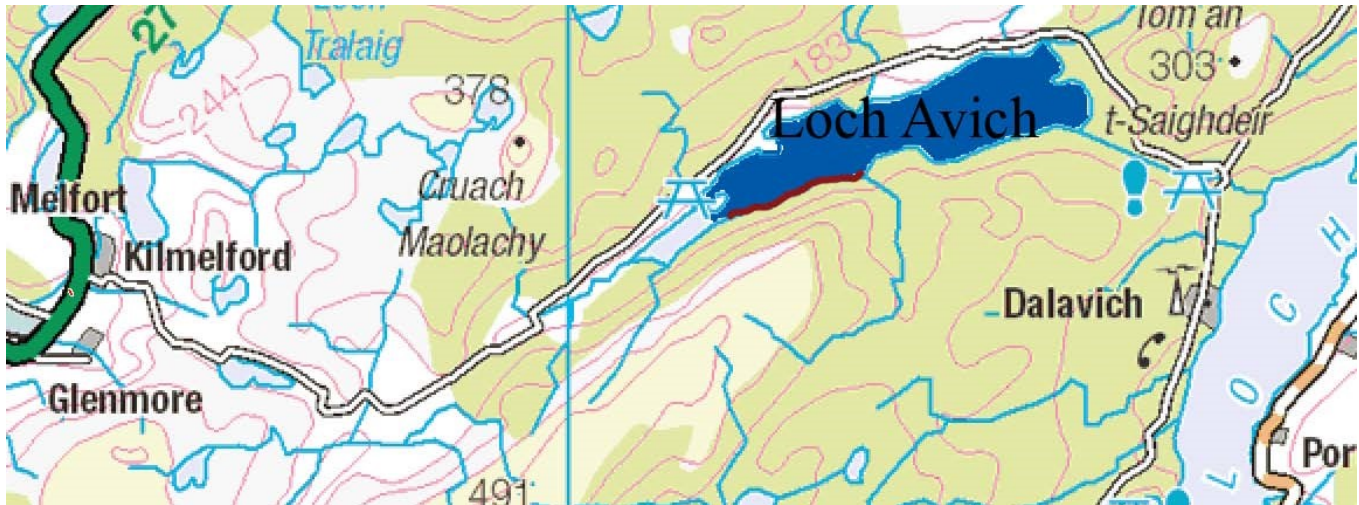


# Oban and Lorn Angling Club Lochs





## Loch Avich



**Access:** Travel south from Oban 15 miles on the A816 to Kilmelford. Then left at the village store on to the single file road signposted Loch Avich (continue for about 4 miles). Here there is a parking and picnic area. This is where the club boats are moored

### About Loch Avich

Loch Avich is 3½ miles long, 1 mile wide and 150 feet deep. It holds plenty of small trout with regular fish over 1lb being caught; there are rumours of monster trout here. The club has two boats on this water (available for weekly permit holders) which is the best way to fish the loch. The club does have limited bank fishing extending from Dorlinn Point picnic area west to the head of the Loch and approximately halfway down the opposite shore (see map). Please respect the No Fishing zone at the western nature reserve

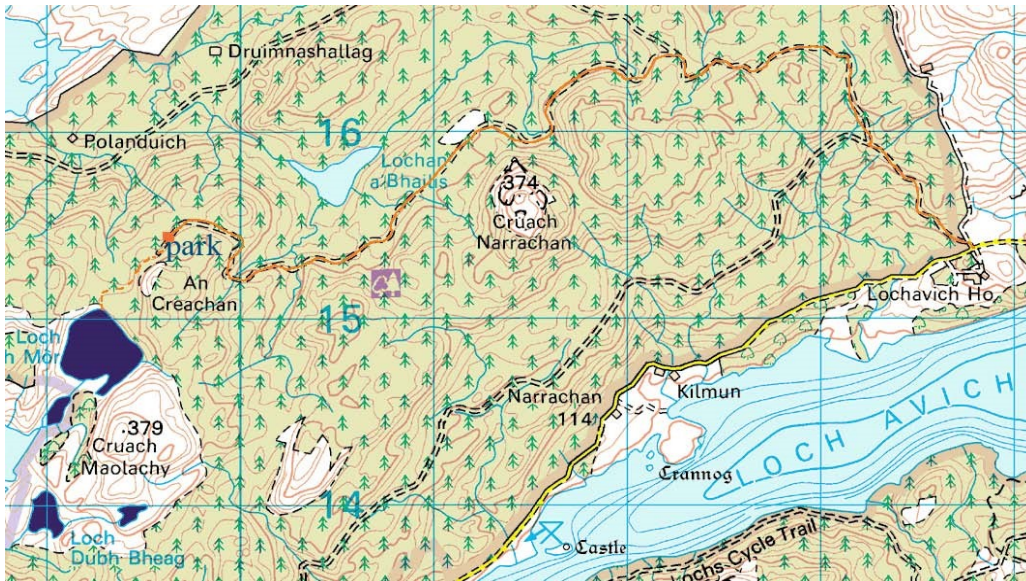


**Flies:** Standard Hill loch flies, brown and gold with mini muddlers seeming to be quite deadly at times.



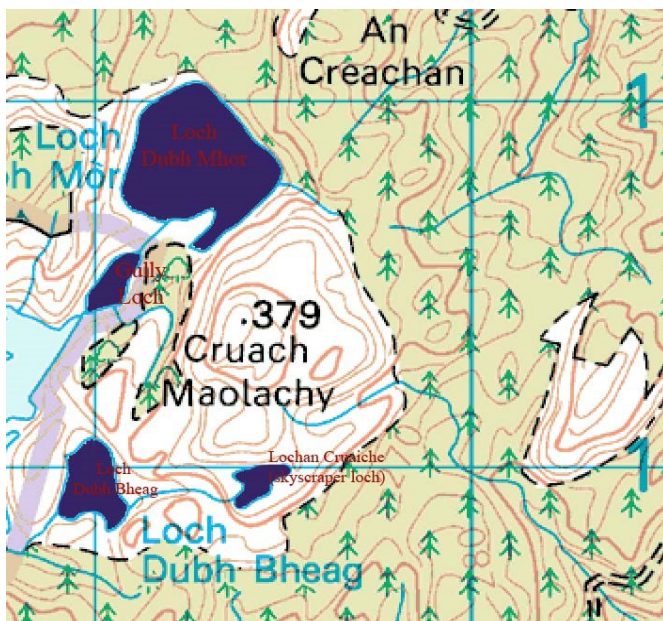
## Cruach Maolochy Lochs

This is a group of small hill lochs above Loch Avich



A combination padlock is on the forestry gate. The combination can be had when a booking is made. The combination can be changed by the FCA or OLAC at any time, so check before setting off to fish.

**Access:** Access is made by a forestry track that starts opposite Loch Avich house. you park at the end of the forestry road and walk through the forest 5 - 10 minutes to Loch Dubh Mor. From here you can walk to the other lochs **Note some navigation skills are needed to find the other lochs and we recommend you take a map and compass and the skills to use them.**



The condition of the forestry roads, whilst generally pretty good, is dependent on the nature and scale of forestry operations. A combination lock is on the forestry gate but these roads can be closed without



notice during periods of harvesting. The forestry commission would prefer anglers to use 4x4 vehicles when using these roads but they can be passable with 2 wheel cars with care. You choose to use these roads at your own risk. Neither the forestry commission or Oban and Lorn Angling Club accept any responsibility for damage to any vehicle.

## Loch Dubh Mhor

**Access:** A ten minutes walk through the forest from the end of the forestry road (follow the quad track between the tees) otherwise a long arduous climb from the lay-by 200 yards past Loch Losgainn Mhor on the Kilmelford/ Dalavich road.

**Fishing:** Lovely Loch situated in a bowl, very deep in the middle. Offers some very good wading and most fish lie along the drop off. A favourite loch with Club members; fun to fish and often easier to wade than walking the bank. Olives form a main part of the Trout's menu in summer and sometimes fish will hardly look at anything else. Watch out for the occasional golden eagle or osprey overhead.

**Flies:** Standard wets, dries 10-14. Don't be without a Greenwell or selection of Olives.



## Gully Loch

**Access:** Follow the burn that drains Dubh Mhor at the south (climb the fence) for a few minutes.

**Fishing:** A small shallow loch with plenty of feeding, need to fish early in the season as it becomes full of weeds, A good average size of fish

**Flies:** Standard wets, dries 10-14 often black with a little red in the dressing.



## Loch Dubh Bheag (pronounced Doo-beg)

**Access:** Follow the narrow inlet on Dubh Mhor keeping the steep slope to your left for ten minutes.

**Fishing:** Great little Loch. Steep heather banks and can be weedy. Contains plenty of small fish with some up to a pound in weight. I have seen some cracking mayfly hatches here.

**Flies:** Standard wets, dries 10 -14.



## Loch Cruach Maolochy

(pronounced Croo-ach Mool-achy) aka the Skyscraper Loch

**Access:** Follow the burn that flows into the bay on the east end of Loch Dubh

Beag for 200 yards then climb the slope to the left. \

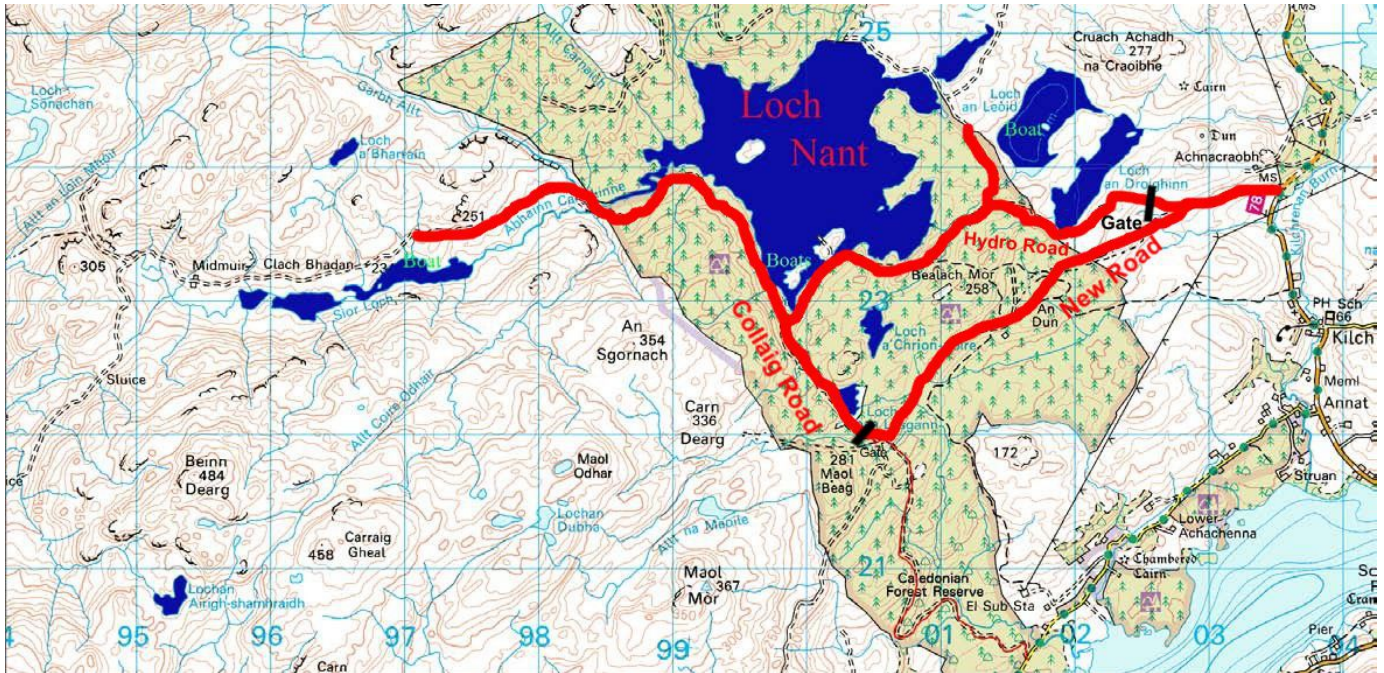
**Fishing:** Little more than a scrape in the rock this deep dark hole has a reputation for being dour but it does put out some monster fish from time to time. Patience is the key here.

**Flies:** Worth going through the box here to try and tempt a lunker:





## The Nant Basin



### Access:

From Taynuilt take the B845 for Kilchrenan. Half a mile before the village the Nant Hydro Road is signposted on the right. Take this road for half a mile or so until you reach a junction with the New Road on the left (see map), which leads across the hill to the Collaig Road. As of July 2018 the Hydro Road, continuing from the New Road junction, has been resurfaced and is the recommended route to the lochs as it provides the quickest access and is slightly better for vehicles than the Collaig Road. Key holders may use the Hydro Road and take cars through the locked gate at the position shown, although restrictions can apply at times. If the Hydro Road is closed for maintenance or forestry operations, the only access is via the New Road and then the Collaig Road, where another locked gate is positioned just beyond its junction with the New Road (see map).

The Collaig and Hydro Roads are best negotiated in a 4x4, and anglers use these roads at their own risk. Neither Oban and Lorn-Angling Club, nor the Forestry Commission, can be held liable for any damage to vehicles on these roads. Drive carefully – there is very little if any mobile phone signal and it is a long walk out to Kilchrenan if you break down or come off the road and get stuck.

If you take the New Road to the Collaig Road, follow the Collaig Road north, taking the right hand fork where the road divides. The road on the left fork looks better but does not go to the lochs. Proceed along a very poor section of road for around half a mile, when it joins the metalled Hydro Road on Loch Nant. At this junction you can take a left for about 200 yards where both of the Nant boats are moored and continue for another few hundred yards for the 'Picnic Area' and river mouth. Continuing further west up the glen will bring you to the Midmuir and Musdale Lochs. A right turn off the Collaig Road at the junction of the Collaig road and Hydro Road will take you eastwards above Loch Nant on the Hydro Road; proceed 500 metres to a left turn for the 'Tower'. A further 0.9 mile will bring you to another junction. Turning left at this junction will take you to the 'Puddle' lochan then the Hydro Dam itself. Turning right will take you to Loch an



Leoid and Loch an Droighinn, the road then continuing to complete a circuit to the Hydro Road gate and the New Road junction (see map).

If you start on the Hydro Road itself, follow the above directions in reverse for navigation west from the Hydro Road gate.

Keys for the locks on the gates on the Collaig and Hydro Roads are obtainable from The Anglers Corner, Oban. They are available on payment of a deposit of £15 and allow access to the lochs by vehicle. The forestry roads, which are not metalled, are potholed, rutted and unsuitable for cars with low ground clearance; 4 x 4s are recommended.

## Loch Nant

**Boat:** The club has two boats on the Nant moored about 200 yards north of the Collaig Hydro road junction (see map).

One of the most popular Club Lochs, Producing fish from very brown fish with deep red spots to quite silver fish, There are some hot spots within the loch which will produce fish after fish.

Traditionally fishes best March to June and comes on again in September.

In the summer, evening offers the best chance of sport. Fish average 1/2 to 3/4 lb (with fish of a few pounds not uncommon) and can be caught anywhere. The Loch does have hot spots and it is not unusual to hit an area where fish are caught one after another from the same spot. Equally there are days where you do not see a fish. On a good day expect to catch double figure baskets.

Favoured places are any point or headland, gullies, anywhere a stream enters the Loch and around the islands. Terrific variation of from almost black to golden and some that could be confused for Sea trout.

In the summer there can be some terrific hatches of flies and excellent boat fishing.

Be careful, the Loch is used for electricity generation and when the level is low, large areas of very soft mud are uncovered. **Walk around; DO NOT attempt to cross these.** Difficult to walk round when the water is very high and like fishing on the moon when the water is very low.



**Flies:** Standard wet and dries 12-14. Do not leave home without a Bibio. Lures and large flies work well when the fish are on.

## Loch an Droighinn and Loch an Leoid

aka 'The Fleming's lochs' or 'Barrachander Lochs'



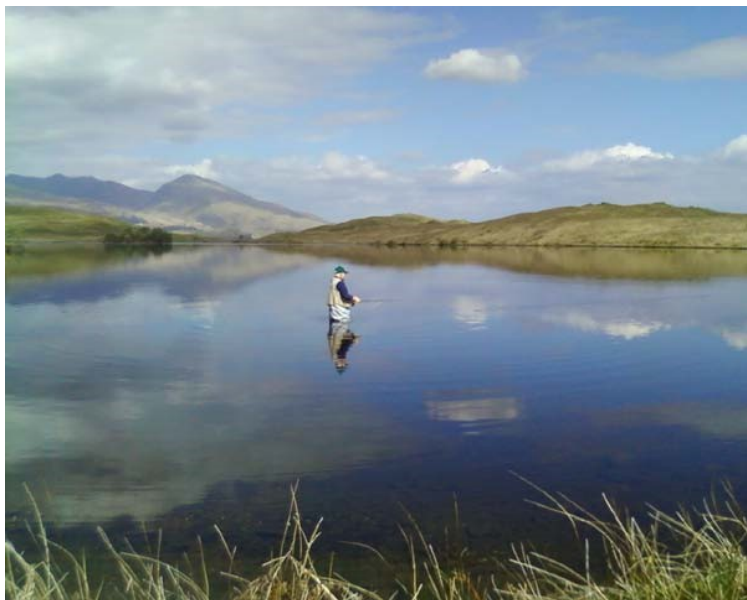
**Fishing:** Clear Lochs set on limestone substrate and offer very scenic fishing with excellent views over Ben Cruachan to the NE. Wading is good. Large weed beds appear on both waters as the season progresses. On the down side the average weight of fish in both waters is very poor with few fish reaching even half a pound. To this end, these waters are seldom fished.

Of interest are the disused Lime quarries and workings and the ancient hill fort to the east. Scottish Water draws potable water from these Lochs.

**Flies:** Standard wet and dries 12-14

## Loch Nan Losgainn

aka 'The Frog Loch'



**Access:** Lies beside the Collaig Road a few hundred yards from the Hydro Road junction (see map),

**Fishing:** Weedy little Loch that is difficult though not impossible to fish from May on. Average weight of trout is around the pound mark with bigger fish in the 2-3lb

range taken fairly regularly. The roadside shore is difficult to fish due to scrub, but other parts of the Loch offer good firm wading on gravel between the reeds. Feeding is varied, so it is worthwhile changing flies.

**Flies:** standard wet and dries 12-14, deerhair sedges worth a bash.

## Sior Lochs (pronounced Sheer lochs)

**Access:** From Loch Nant continue on the Hydro road for about a mile, alternatively take the A816 out of Oban south for four miles to Kilmore turning left at the signpost Barran/ Musdale/ Kilmore, follow the road for 1/4 mile then take a right following the sign for Musdale for about four miles. Park at quarry past the signpost indicating public footpath to Kilchrenan. Walk on this footpath for about 15 minutes and up the gully with the pipeline turning left onto the Hydro road at the top.

**Boat:** The Club boat is moored on the middle Sior Loch but can be steered through to the lower loch when the water level is high.

**Fishing:** This chain of three lochs is situated in a remote glen with prolific bird life. The lochs are packed with lots of nimble, hard fighting little brownies that are easily caught. Fishes best earlier in the seasons (April - June) before weeding up. The top/ smaller loch can put out the occasional bigger, minnow fed trout. Great fun fishing in the evening with only the sound of curlews for company.

**Flies:** Standard wet and dries 12-14



## Loch a Bharrain (pronounced Loch Ah-Varr-Ane)

**Access:** As per Sior Lochs, then follow the burn that enters the larger (bottom Sior Loch) at its west end. A fairly easy walk of about ten minutes.

**Fishing:** A little lochan that is rarely fished but worth a visit. The east end weeds up quite heavily by mid season. Packed full of small hard fighting trout with the odd keeper. A good fun little Loch.

**Flies:** Standard wet and dries 12-14



## Loch Airigh Shamrigh (pronounced Ah-ree Sour-ee) aka The Horseshoe

**Access:** From the Nant continue to the end of the Hydro road (about four miles) or as per the Sior Lochs except that you turn right at the top of the gully for about a mile. At the end of the Hydro Road follow the burn up the hill for about 1/4 mile then take the left fork up through the gully following the burn. The terrain flattens out for the last few hundred yards before the Loch. Only a mile's walk from the road but seems longer (takes from 30-60 minutes depending on your fitness). Leave the waders at home.

Worth it alone for the spectacular views over the Firth of Lorn and the Isles.

**Note some navigation skills are needed to find this loch and we recommend you take a map and compass and the skills to use them**

**Fishing:** This great little loch is full of features; bays, shallows, points, boulders, deeps and reed beds. Fishes from end of April to end of season. Trout vary from ½ - 2lbs and are fairly easily caught. The Loch has some of the prettiest speckled fish around with spots extending onto the tails on some fish (unusual).

**Flies:** Standard wets, dries and mini muddlers, 12-14.



## Beinn Dearg Lochan

**Access:** From the far end of Airigh Shamrigh walk north east skirting the hill then swing left picking up the burn that drains the loch. About ten minutes walk. The Loch is situated below the steep hill to the north.

**Fishing:** Can be dour but has a reputation for putting out fish over 2 lbs.

**Flies:** Worth going through the box here to try and tempt a lunker.

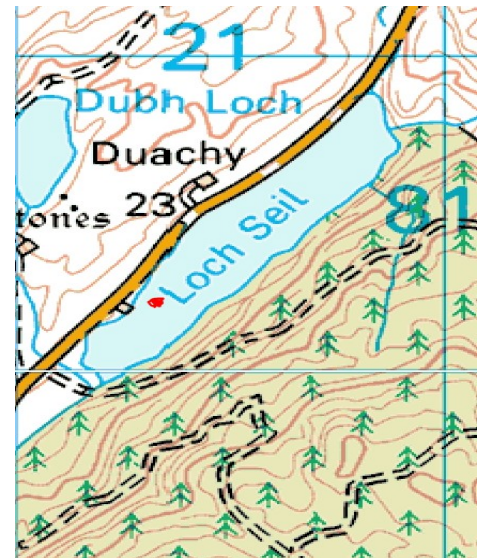


## Loch Seil Brown Trout, Sea Trout

**Access:** Very easy to find. Lies next to the road. Take the A816 south of Oban for about seven miles then take the Easdale road at Kilninver for about two miles. Park at the little pump house building.

**Fishing:** Very weedy Loch full of plenty hard fighting small trout and the occasional sea trout at the back end. Was used for some time as-a water supply but has been bypassed recently with a new supply

**Boat:** Situated at the south end of the Loch next to the old pump station. Watch out for the sunken crannog about 100 yards north of the mooring, otherwise safe.



## Loch Nell (boat only) - Brown Trout, Salmon, Sea Trout, Char



**Access:** From OBAN take the Glencruitten Road up past the golf course following the road until you get to the junction for Connel / Kilmore 2 miles. Turn right for Kilmore for about half a mile then taking the Taynuilt Road for about 2 miles passing the standing stone taking the first right turning down to your right along a farm track passing Torinturk Farm for about a mile ( see map ). Remember to close all gates to keep all farm stock in. The boat is moored in a sheltered bay

**Boat:** The club has an agreement with the local estate to only fish north of a line extending from the fence entering the Loch at Loch Nell Lodge to approximately halfway up the far side of the Loch (see map).

DO NOT FISH ANYWHERE WE ARE NOT PERMITTED OR WE RISK LOSING OUR FISHING/BOAT ACCESS.

**Fishing:** This used to be a fantastic sea trout water but the sea trout population collapsed in the early 1980's and only in the last few years have there been signs of returning fish. Brown Trout fishing is very poor. Salmon enter the Loch after large spates from late June onwards and although you may see plenty fish, they are very difficult to catch. Char are occasionally caught from August onwards as they enter shallower water. We would ask anglers to voluntarily release all sea trout in an effort to encourage a healthy breeding population of fish.

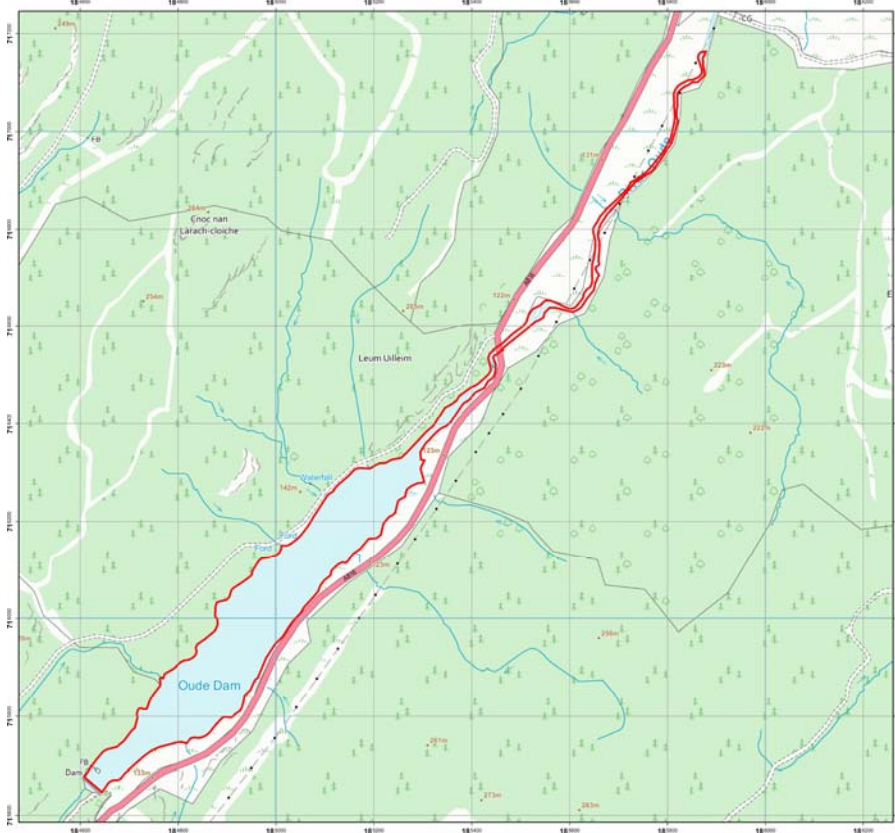
**Flies:** Standard Trout Salmon and Seatrout patterns 8-14.

Notes: Nell Salmon and Sea trout season is February 11th to October 31st (inclusive). Catch returns (even blanks) must be filled in for Loch Nell and forwarded to the Club for the end of the season. All Sea trout under 12 inches to be returned.

NO SUNDAY FISHING FOR SALMON OR SEA TROUT. ALL GRAVID/ COLOURED SALMON MUST BE RETURNED



## Oude Reservoir (Pronounced Ood Reservoir ) Brown trout



**Access:** From OBAN take the A816 for 14miles. The loch lies at the roadside on the right hand side.

**Fishing:** Brown Trout Well-stocked little loch with free rising trout averaging 3 to the pound. Fishes well throughout the season. A club boat is often located on this loch for periods. Bank fishing can be difficult because of the fluctuating water levels.

**Flies:** Standard wet patterns

### Loch Gleann a Bhearraidh Brown trout

Bank fishing is not permitted on Loch Gleann a Bhearraidh.

**Access:** From Oban take the Lochgilphead road south for about two miles turning right at the Lerags road junction. Follow the signs to the Barn Bar Restaurant, taking care to park out of any one's way taking the forestry track past the pond and gate. Make your way up the forestry track keeping to the right hand track at its junction. A walk of about 15 - 20 minutes is needed to get to the Loch.

**Boat :** The club has one boat on the Loch, situated in the bay as you arrive at the Loch. No more than two rods may fish



**Fishing :** Can be dour but has a reputation for fish well over 1lb.

**Flies :** Standard wet and dries 12 - 14. Do not leave home without a Kate McLaren, Bibio.

## RIVER AWE - POLFEARN POOL

Brown Trout, Salmon, Sea trout, Rainbow Trout

**Access:** From Taynuilt take the B845 through the village following signs for Loch Etive Cruises. At the end of the road there is plenty car parking. To access the Fishing it is necessary to walk back from the car park towards Taynuilt and take the road on the left for a hundred yards. Walk between the two houses, through the gate (and not through people's gardens), continue over fields for 200 yards. Gorse is thick at bank side but there is usually space enough to fish after squeezing through it. Rocks can be slippery and the current strong - so take care when wading. This area is tidal, or at least the water is slowed by the level of the tide in Loch Etive. The Club's fishing extends from opposite the Inverawe Power Station (below the Weir) all the way down to where the river meets Loch Etive.

THE CLUB HAS FISHING ON THE **SOUTH** BANK (TAYNUILT SIDE) OF THE RIVER ONLY.

**Fishing:** Chance of Salmon throughout season. In low water fish may be found lurking in the deeper pools or runs. Brownies can be taken but are nothing remarkable. Sea trout can be taken in the river's lower reaches but we would urge you to voluntarily return these fish in an effort to build up a decent breeding stock.

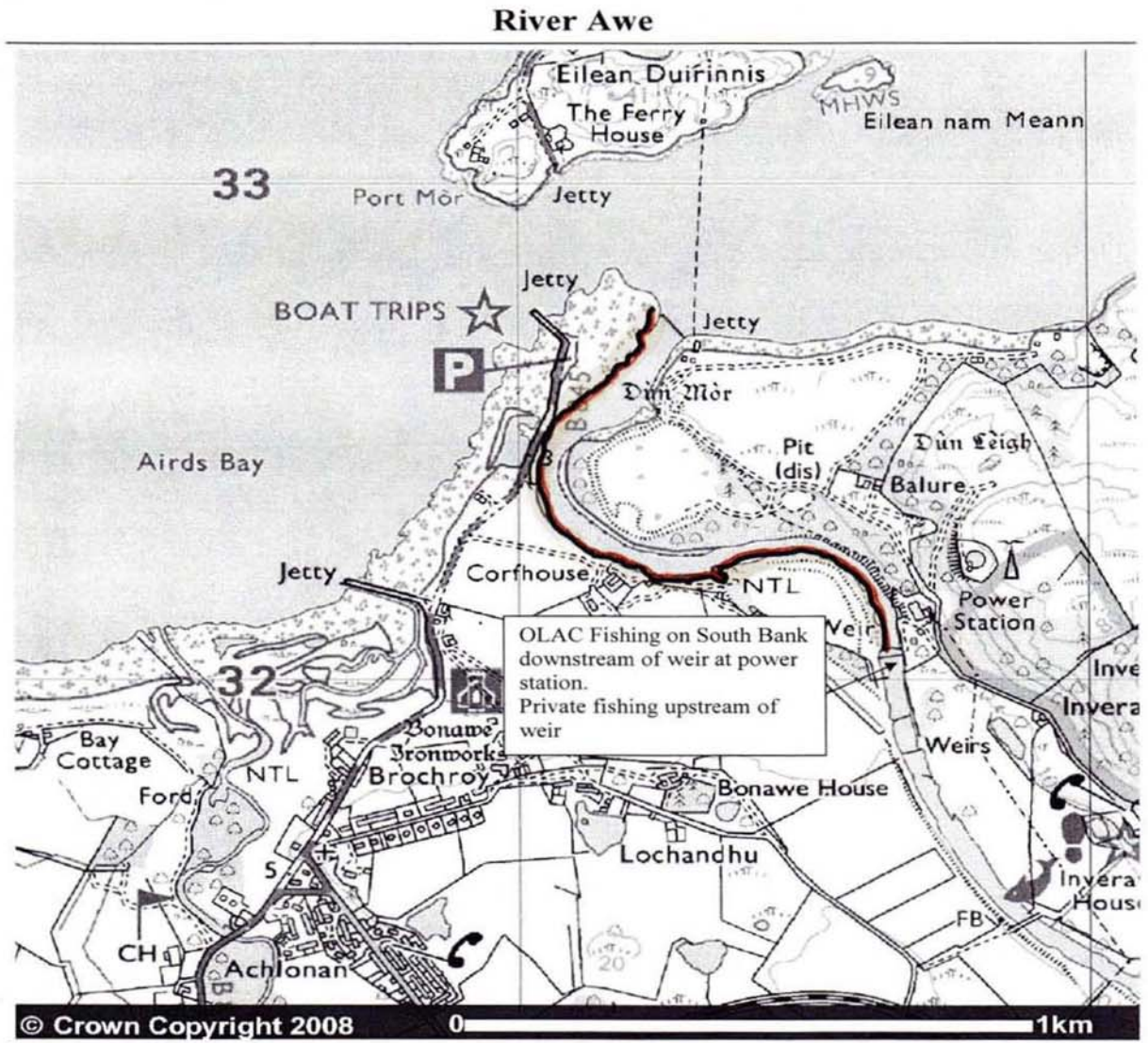
Escaped rainbows can be caught up to double figures **PLEASE KILL ALL RAINBOW TROUT CAUGHT**

**Season:** The Awe Salmon and Sea trout season is February 11<sup>th</sup> to October 15<sup>th</sup> (inclusive), however proprietors have a long standing agreement to cease fishing by the end of September. Club Members are asked to respect this.

**NO SUNDAY FISHING FOR SALMON / SEATROUT - ALL GRAVID / COLOURED UP SALMON MUST BE RETURNED.**

**Flies:** Standard Salmon and Sea trout patterns, Ally's Shrimp does well.





River Awe – Polfearn Pool / Fishing Fields (South Bank Only)

Follow A85 from Oban to Taynuilt. Turn left at war memorial and follow B845 (signs for Loch Etive Cruises). Salmon, Sea Trout, Brown Trout and Rainbows. No Sunday fishing.