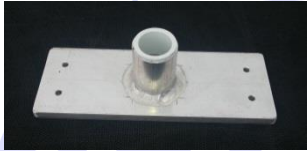


## POWER Concrete Installation Instructions (Petite, Narrow, Small, Medium and Large, LargePlus Kits)

Note: Finished lid is usually 600/800mm wider than the water edge width of your pool

Kit inclusions		
		
Lid frame with attached stainless steel hinges & hinge plates	Lid Frame bars	Handle & Support Plate
		
Motor/Gearbox assembly with End Slug	End Mount with bushing	Handwheel
		
Gas Struts & Stainless Steel Brackets	End Mount	Roller tube
<b>Concrete</b> Fixing Hardware & Installation Instructions Strut Layout		

**READ ALL DOCUMENTS THOUROUGLY PRIOR TO COMMENCING**

Items to Purchase		
<b>Lid Timber</b>	Timber slats or Tiles	Personal choice.
	Screws (if required)	Self-tapping screws to fix timber slats (30mm)
<b>Lid Tiles</b>	Tiles, FC sheet listed on your order (4.5m or 6.5m Hardipanel) All weather flexible adhesive, eg Armourflex or Ardex or similar	

## Table of Contents

<b>Instructions</b>	<b>3</b>
1. Formed concrete installation	3
2. Assemble Lid Frame	5
Extending Lid Frame (Wide timber boards)	5
3. Setting the Lid Frame in the Concrete Pit	5
4. Install handle support (Timber instructions go to Point 5)	7
5. Install Motor/Gearbox and End Mount	8
6. Install Gas Strut(s)	9
Outside Strut(s) 525mm	9
Inside Strut(s) 455mm	10
7. Install Tube Assembly	11
8. Tile Lid Frame (Timber finish go to Point 9)	13
9. Complete Lid Frame and Handle in Timber	15
10. Finalise Aussie UnderCover® Installation	16
<b>Operation</b>	<b>16</b>
<b>Replace the Cover</b>	<b>17</b>
11. Operation & Safety	18
12. Maintenance and Trouble shooting	18

**NOTE: If you have purchased or installed this unit for someone else or a customer, please leave these instructions with them.**

**Your comments or amendments to the instructions are welcome – 1300 722 009**

### You will need:

Hammer Drill  
Drill  
Hex head bit / nut setter  
6mm concrete bit  
Hammer  
Small flat head screwdriver  
Level

Grinder with metal and concrete wheels  
Tape measure  
Pencil

Material for lid frame

- Baseboard, liquid nail or Armourflex and tiles, or
- timber/composite and screws

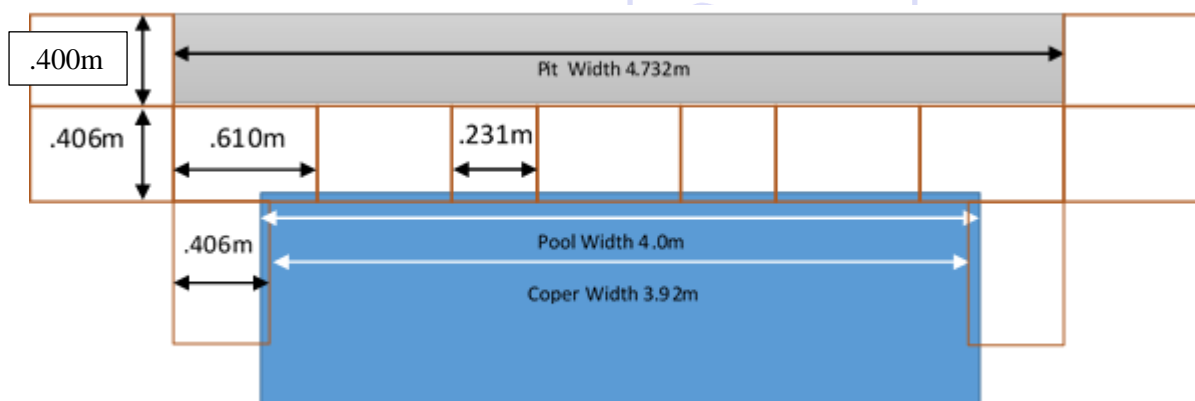
**READ ALL INSTRUCTIONS BEFORE COMMENCING**

# Instructions

The standard area required to install the kit in-ground, under deck or in a concrete or other type of pit allows 250mm past the water line edge on each side of the pool. This can be reduced to 100mm on the non-winder side if space is an issue. It can also be flush with the waterline but the End Mount brackets should be recessed if possible.

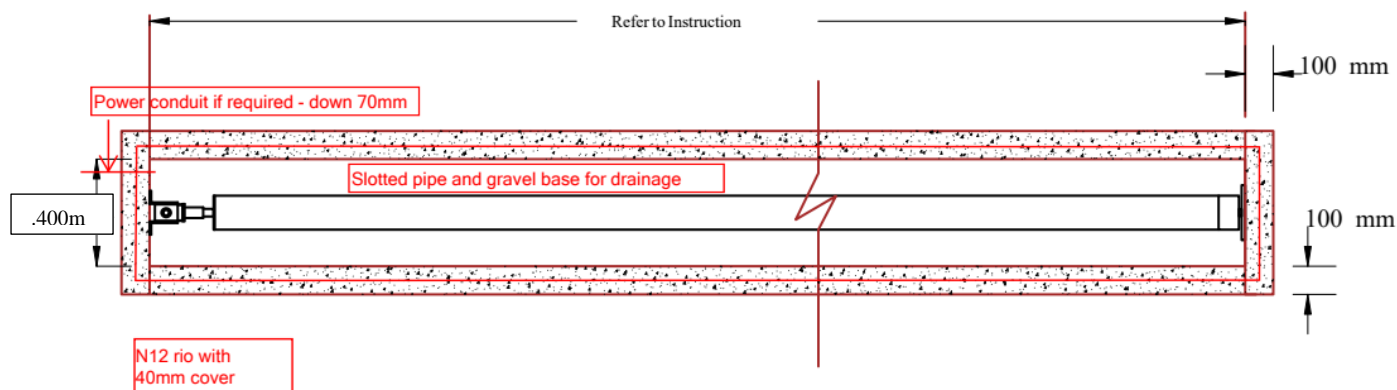
## 1. Formed concrete installation

- Create a cavity LENGTH x 0.390m wide x 0.500m deep.
- Allow extra space for suitable drainage. (agi line and gravel pit or formal drain)
- Water must not collect in the completed pit.
- **IT IS IMPORTANT THAT APPROPRIATE DRAINAGE BE PROVIDED OR A BILGE PUMP**



Pool water line width – coper overhang + coper width  
e.g. 4.0m – 0.08m + .812m = 4.732m

## Concrete Pit Opening Size



**NOTE:** In both the in-ground installation and under deck/concrete installation, the completed lid frame should be 20mm shorter than the internal measurement of the completed concrete opening. This allows for a 10mm gap at each end. The lid frame covering material (e.g. tiles or hardwood decking) will overhang these gaps.

**NOTE:** These measurements will need to be adjusted if reducing or increasing the lid frame and/or pit/deck opening





**Figure 1 Form up concrete pit**



**Figure 2 Ensure formwork is level horizontally and vertically**



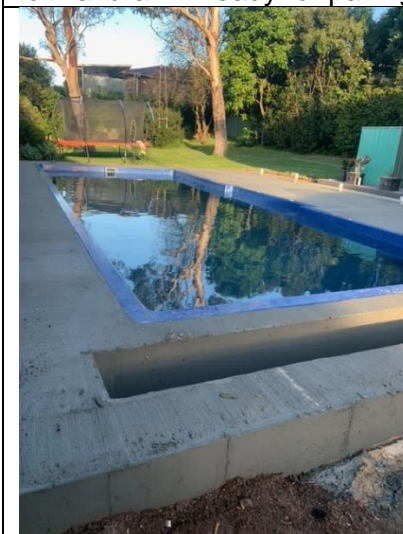
**Pit formwork BRACED ready for concrete**



**Completed pit with sloping concrete base and formal drain – ready for paving**



**Pit ready for paving**



**Pit ready for paving**



**Completed pit and paving**



**Gravel base with agi line underneath. Completed pit minimum 0.450m deep plus gravel and agi line.**

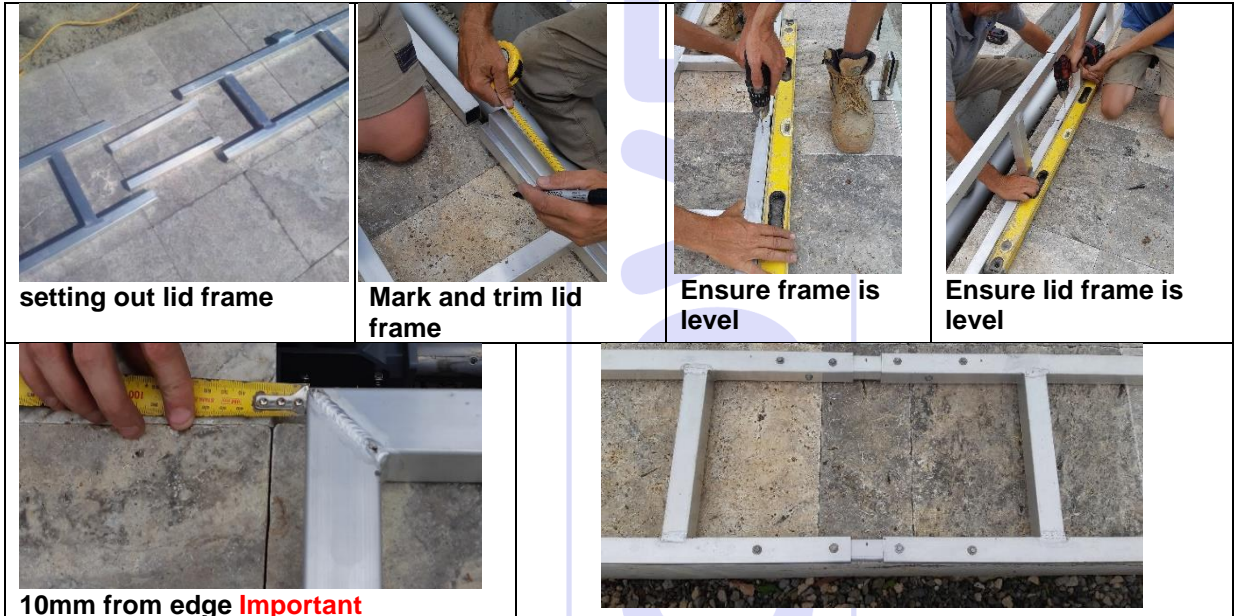
**Rear wall and ends must be flush with paving.**

## Various concrete pit examples



## 2. Assemble Lid Frame

- The welds on the TOP of the Lid Frame are ground smooth
- Trim extension arms to suit your finished lid length, if necessary
- **ENSURE YOU LEAVE A 10mm GAP AT EITHER END.**
- Insert joiners and bring both sides of the lid together to the appropriate length
- Fasten with metal tech screws provided on inside and bottom (welded side) of frame ensuring it is level. Do not screw into the top surface.



### Extending Lid Frame (Wide timber boards)

Use an 3mm aluminium right angle (not provided) and screw to the front edge of the lid frame, ensuring you leave at least a 5mm gap to the edge of the pit or deck. Timber can be used but weight needs to be considered.



## 3. Setting the Lid Frame in the Concrete Pit

- Prepare the concrete pit surface if necessary. Walls **MUST** be level horizontally and vertically.
- Attach the Support Bars across the top of the **two centre hinges**
  - NOTE: Only use spacers if you need to increase the height to match the hinges
- Lift the lid and place into the pit, ensuring you have a 10mm gap at either end.
  - **Make sure the Support Bars are touching both sides of the pavers/concrete before drilling.**
  - Predrill through the holes at the base of each hinge plate underneath the Support Bars
  - Fix with 50mm concrete screws
- Mark the top of the Lid Block so it can be repositioned the same way
  - Position and predrill the Lid Blocks. (Not directly opposite the two hinges)
  - Remove the two Support Bars and open the lid
  - Apply adhesive to the back of the Lid Blocks before screwing to the wall.
- **Screw the Support Bars to the next two hinges** and repeat the process.
  - **Make sure the Support Bars are touching both sides of the pavers/concrete before drilling.**
- Repeat again for the Large and Large+ kits.





Predrill bottom of Hinge Plate



Clamp or position lid block



Position lid Block



Glue and install Lid Block



Glue and install Lid Block



Level Lid Block



Support bracket ready for next hinge



- Once all the Lid Blocks and the base of all Hinge Plates are connected:
  - Starting at one end predrill the top of the hinge plate
  - Remove the bottom screw, lift up the Hinge Plate and apply adhesive to the back
  - Replace and fix with all three concrete screws
  - Repeat at each hinge



**IMPORTANT:** Once the lid frame is complete, ensure that it is sitting flat on the lid blocks and the lid frame finish (ie. baseboard, adhesive and tile or timber etc) will be level with the surrounding finished height.

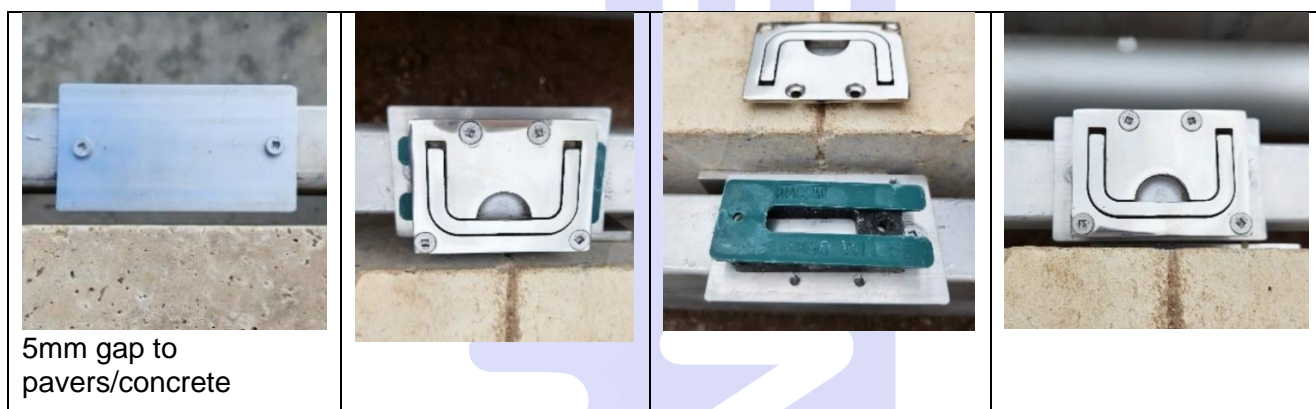
**MAKE ANY NECESSARY ADJUSTMENT TO THE LID FRAME NOW**

<https://youtu.be/qUwxBT04OdY>

#### 4. Install handle support (Timber instructions go to Point 5)

**Handle support plate for Flush Pull handle and tiles**

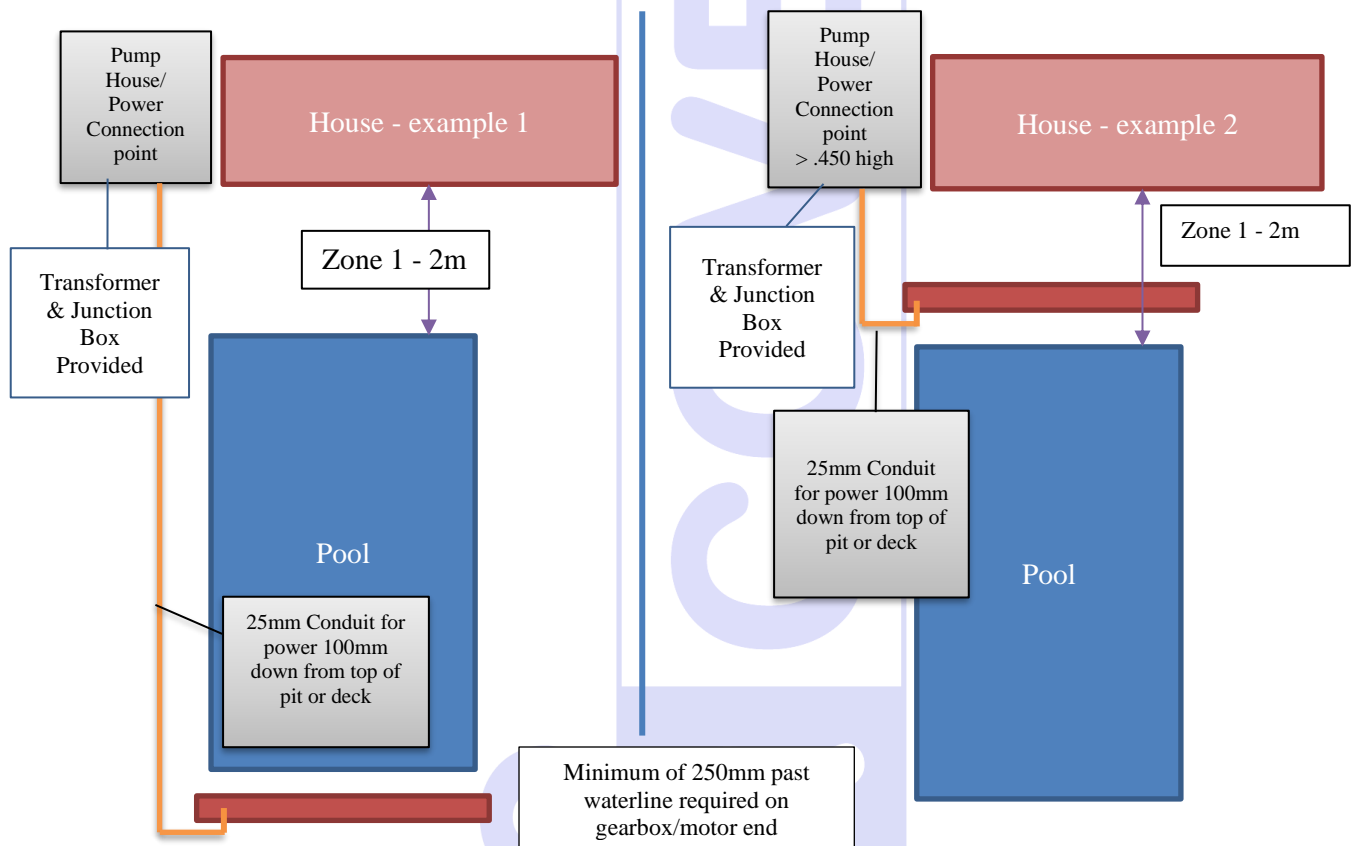
- Attach the Handle Support Plate to the lid frame as shown using the 30mm self-drilling screws provided, leaving a 5mm gap
- Predrill the Flush Pull screws with the 4mm drill bit. Use shims/spacers to lift the Flush Pull level with screws provided



## 5. Install Motor/Gearbox and End Mount

Ideally the transformer is located with your pool equipment. Other than an appropriate power point, an electrician is NOT required for installation.

25mm to 40mm conduit is required into the pit to the end where the power gearbox will be installed, down 100mm from top of deck or tile/paver level. The power gearbox is a 24V system and can be installed at either end. Wire (10m) and connections are provided in the kit as standard.



- Install the motor/gearbox using (4) 50mm concrete screws as shown below
- Install the end mount (with white bushing) using 4) 50mm concrete screws as shown below
- Run the provided cable (24 volt) through the conduit to the motor in your pit or deck area.
- Mount the transformer and the connected junction box at the power point (with the pool equipment)
- Connect the conduit cable to the motor screw connector



Motor with cable, remotes, transformer and junction box



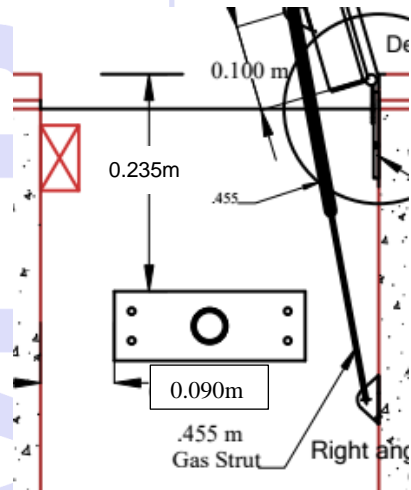
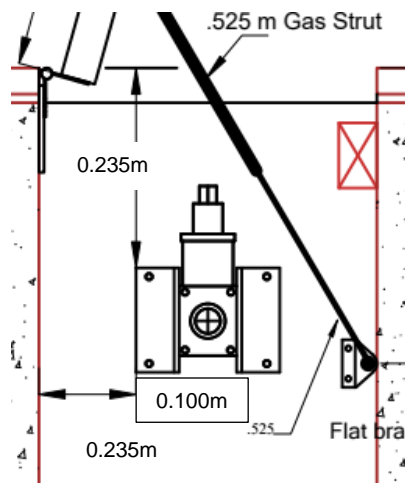
Motor/Gearbox assembly



Install end mount

**THE MOTOR MUST BE INSTALLED AS SHOWN, IT CANNOT BE SIDWAYS OR UPSIDEDOWN.**

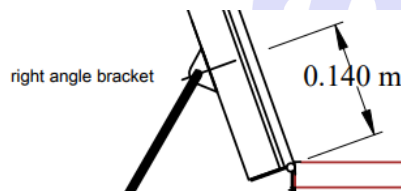




## 6. Install Gas Strut(s) Outside Strut(s) 525mm

- **Count your gas struts**
- **Refer to Strut Setup Diagram** for layout of 2, 3 or 4 strut system
- Install the **OUTSIDE** Strut(s) **FIRST 525mm** – 20mm metal self-drilling & 20mm timber.
  - **If you have one (1) 525mm strut, Install this on the End Mount side**
  - **If you have two (2) 525mm struts, install one at either end**
- If gas strut(s) interfere with the gearbox or end mount reverse the direction of the L Bracket.
- Make sure the winding handle does not interfere with the open lid. Adjust the position of the bottom bracket if necessary.

### Outside Struts 525mm

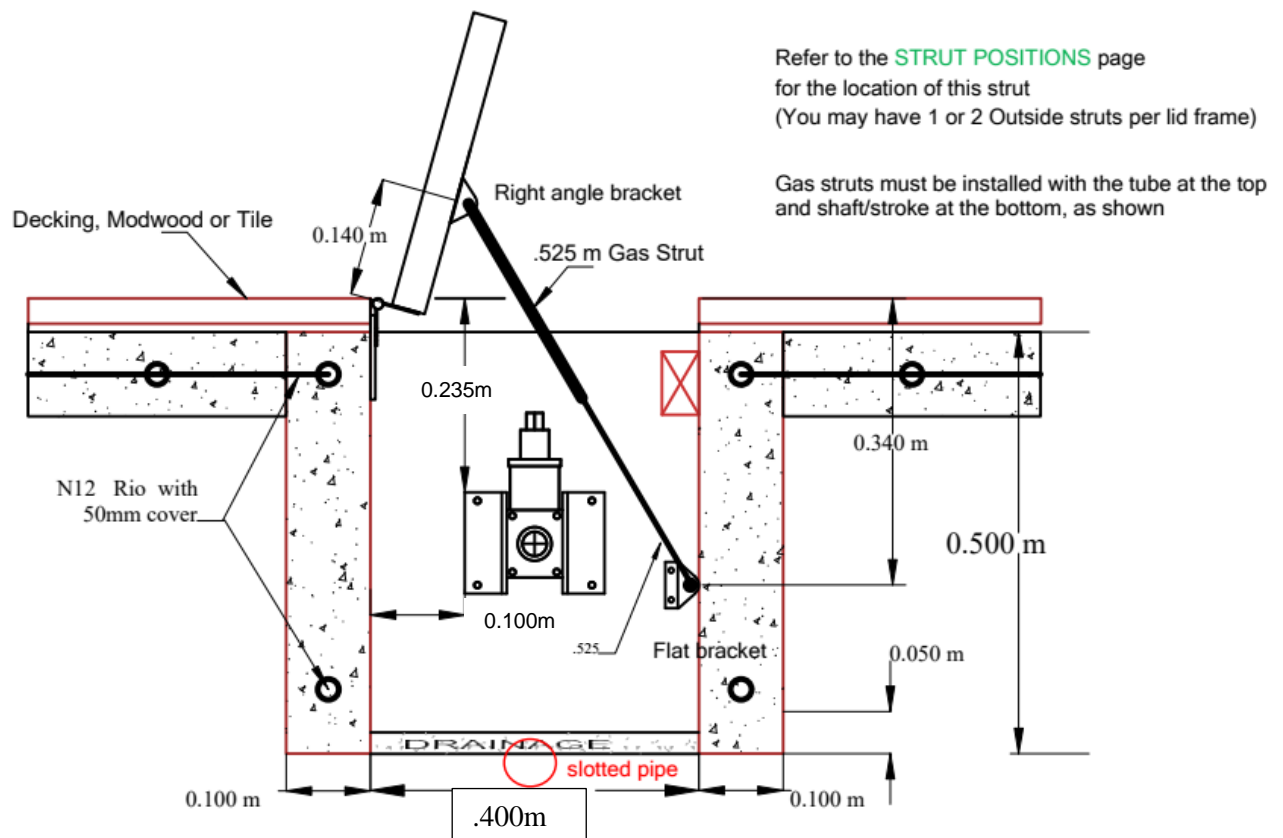


Mark 140mm to ball centre from bottom of lid frame

**OUTSIDE STRUT ALWAYS GOES AT ONE END**



Outside Gas Strut



**Inside Strut(s) 455mm**

- **Ensure the lid frame is open to its full extension**
- Install the **INSIDE 455mm** gas strut(s) on the inside of the lid frame running down the rear wall
- Attach the right angle strut bracket to the lid frame first, 100mm up from the base of the frame
- Attach the strut to the bracket
- Attach the other right angle bracket to the end of the strut and mark drill holes where the bracket meets the rear pit wall
- Remove the strut from the lower bracket, drill the marked holes, insert concrete plugs, and screw the bracket into place. Reattach the gas strut. You may have 1 or two inside struts
- Leaving 1 x 455mm gas strut connected, disconnect all other strut(s) from the brackets and close the lid frame.
- Weight it down with tiles to keep it closed, if necessary.

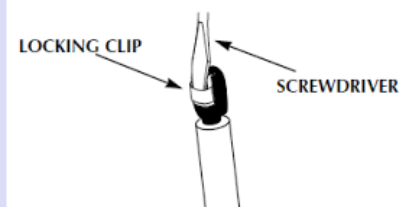


**Mark 100mm to ball centre  
from bottom of lid frame**



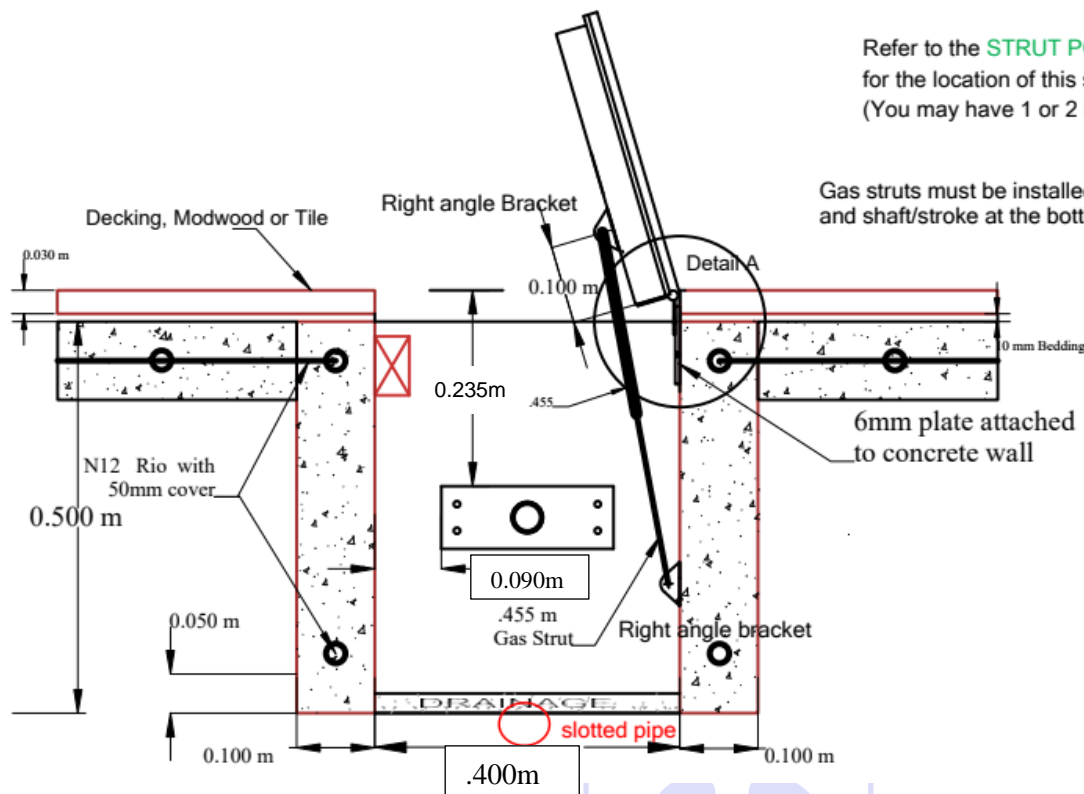
### Completed Inside Strut

### Remove gas strut from bracket





Gas struts must be installed with the tube at the top and shaft/stroke at the bottom, as shown



## 7. Install Tube Assembly

- Remove tube from box and all plastic covering. Slide tube sections apart so you have at least 500mm exposed at each end. Take care when separating the tubes so they don't jamb.
- Secure the small 95mm End Slug into the small end of the roller tube using three (3) 20mm self-tapping screws provided. **(see below for LargePlus kits)\*\***
- The large 100mm End Slug is pre-attached to the gearbox.
- Screw the handwheel to the end mount prior to connecting it to the gearbox and end slug. Hex Head type 17 timber screws provided in Pack 4. The gold pin or bolt (shown above) in the gearbox assembly can be removed to disconnect the motor from the roller tube in the event of power loss. Use the handwheel for manual winding.
- Place the roller Tube into the cavity
- With the assistance of a 2nd person for support, insert the short End Slug shaft into the End Mount.
- While holding the tube in place, expand the tube and slide it onto the End Slug attached to the gearbox. You should have approx. 5mm play at the End Mount end and the tube should roll freely
- Screw the roller tube to the large End Slug using three (3) 20mm self-tapping screws provided
- Install 6 x tube joining self-tapping screws through the 6 x red indicator holes. Support the tube while you do this.
- Push in the feather clips for the pool cover along the roller tube as appropriate. Drill extra holes if needed.





Roller tube



Install Small 95mm end slug



Insert the short End Slug into the End Mount



Insert tube assembly onto the end slug attached to the gearbox and screw in place



Secure tube joining screws



Drill and install extra feather clips if necessary

**\*\* NOTE: the **LARGEPLUS** kit will have a three piece roller tube which will need to be cut back for use.**

Remove tube from box, separate pieces. Dry measure the length you need after the gearbox and end mount have been installed. Cut one of the 2.5m section down to achieve your overall length. Attach the 100mm end slug (Figure 29). Slide the tube pieces together. Dry fit into the pit onto the gearbox and end mount. Install the tube joining self-tapping screws through the red indicator holes. Support the tube while you do this– Figure 23.



## 8. Tile Lid Frame (Timber finish go to Point 9)

- Glue & screw HardiPanel or FC Sheet to the lid frame in front of hinges
- **Tiles must be cut 10mm narrower than the pit width leaving leaves a 5mm gap on all edges when finished**
- Tile the lid frame using a flexible adhesive eg **Armourflex or Ardex**.
- Cut/grind tiles around the hinges and Flush handle
- Once the tiles are set and dry, open the lid (it will be heavy) and re-attached all the gas struts.

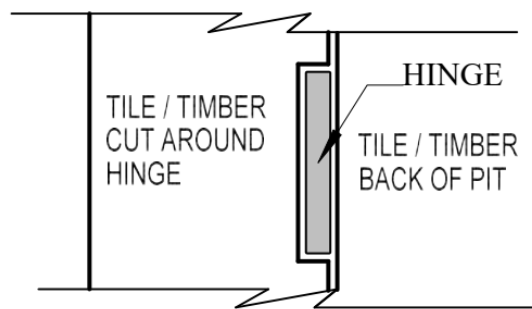


Cut tiles around hinges

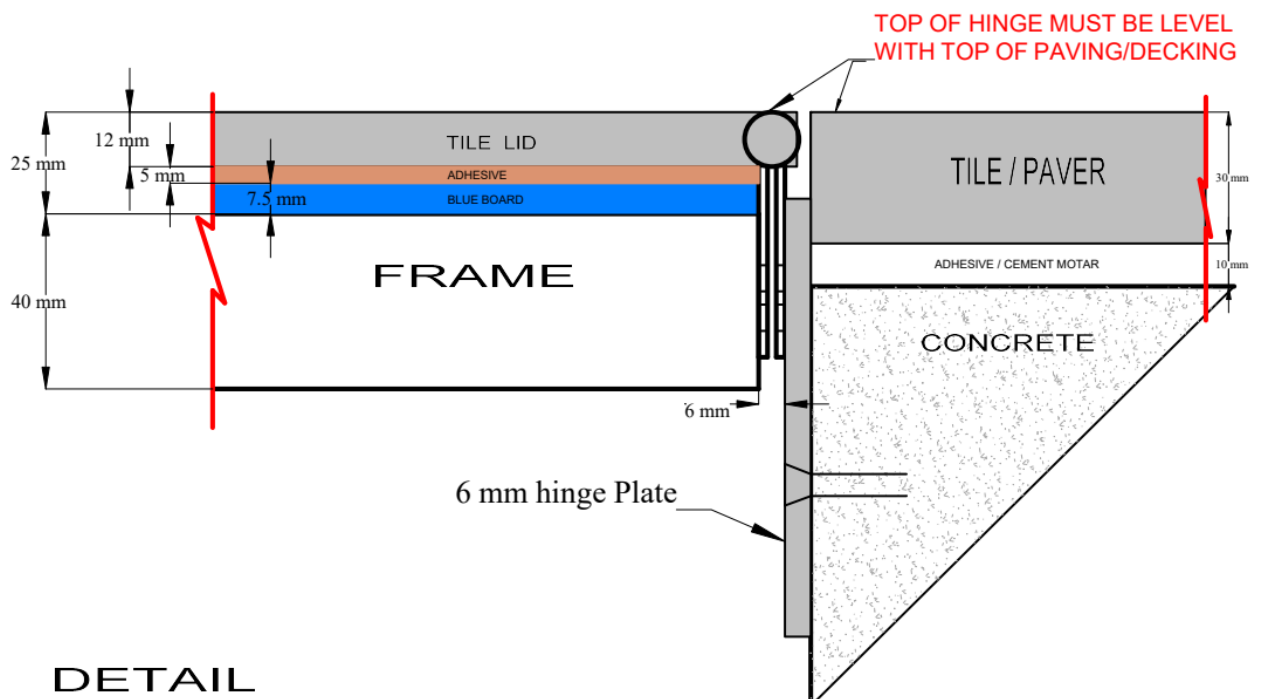


Cut tile around handle

**NOTE:** Various tiles have different weights. If you find the gas struts are not strong enough or too strong for ease of opening and closing, please contact us.

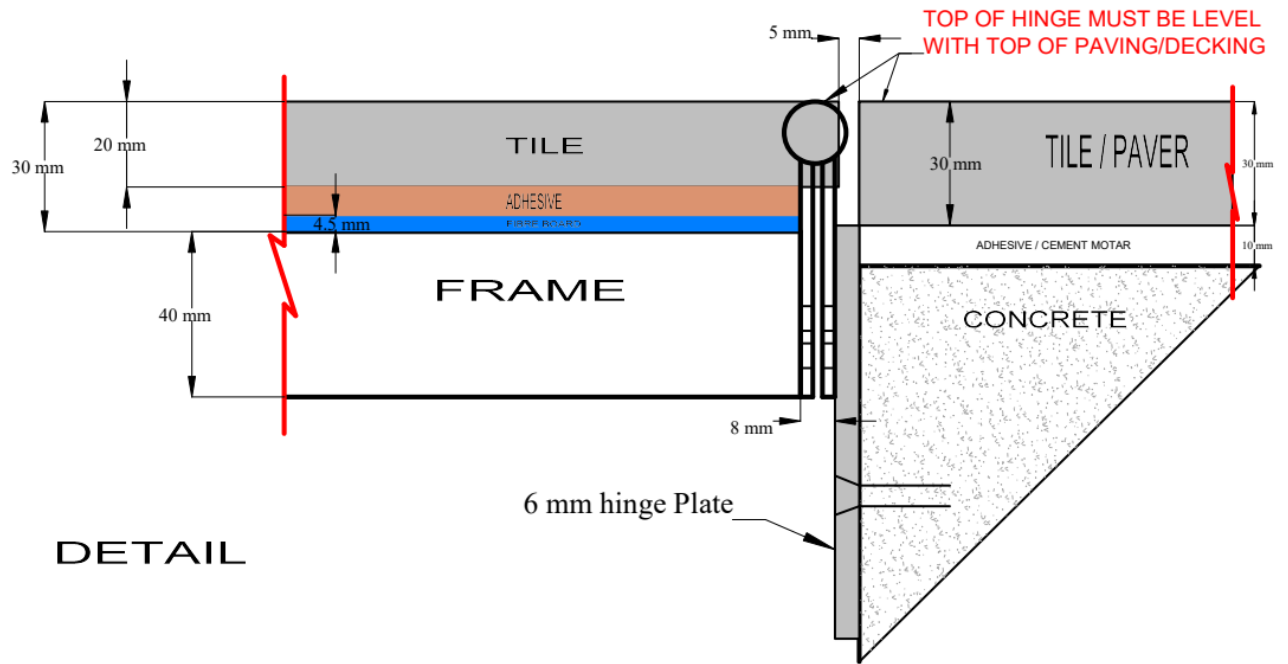


### Example Only



### DETAIL

25mm hinge has a total of 25mm on the lid frame



Up to 20mm TILE (30mm total material on lid frame)

Aussie  
UNDERCOVER

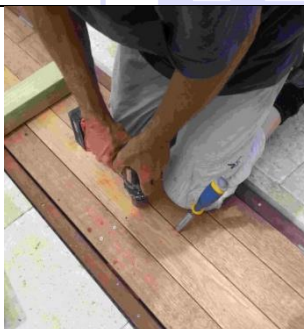


## 9. Complete Lid Frame and Handle in Timber

- Leaving 1 x 455mm gas strut connected, disconnect all other strut(s) from the brackets and close the lid frame.
- Install lid material onto the Lid Frame. Starting at the hinge side adjust board to fit the available space, cut around hinges. Allow approx. 5mm spacing with approx. 5-10mm overhang at the front edge of the Lid Frame. Pre-drill and countersink all boards if using hardwood
- Centre and install the handle with the screws provided. Use a 12mm spade bit to carve out the timber, being careful not to drill to close to the edges where the 4 anchoring screws will be fitted.
- Pre-drill the four holes for the anchoring screws. Reconnect all gas struts.



**Pre-drill and countersink decking boards for lid**



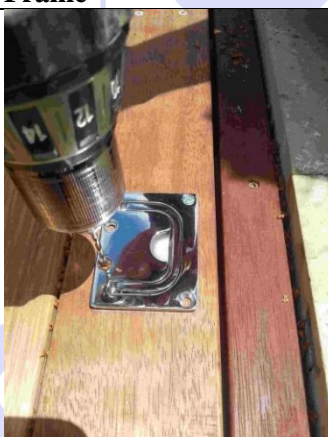
**Screwing decking boards on Lid Frame**



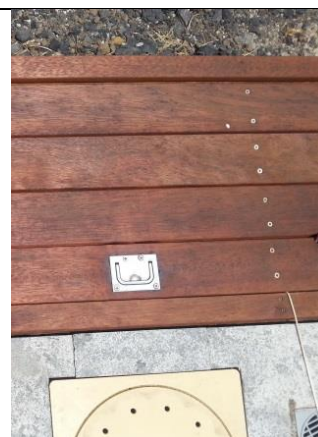
**Marking handle position**



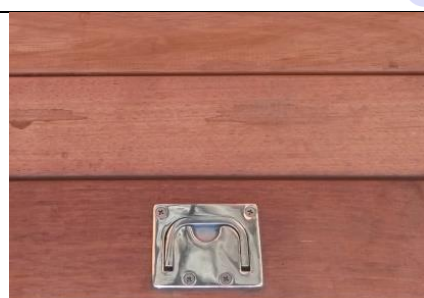
**Completed drilling using speed bit**



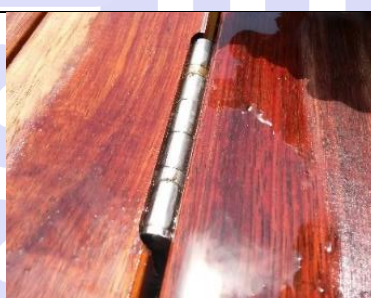
**Attaching handle**



**Completed handle**



**Note: the handle can be installed either way**



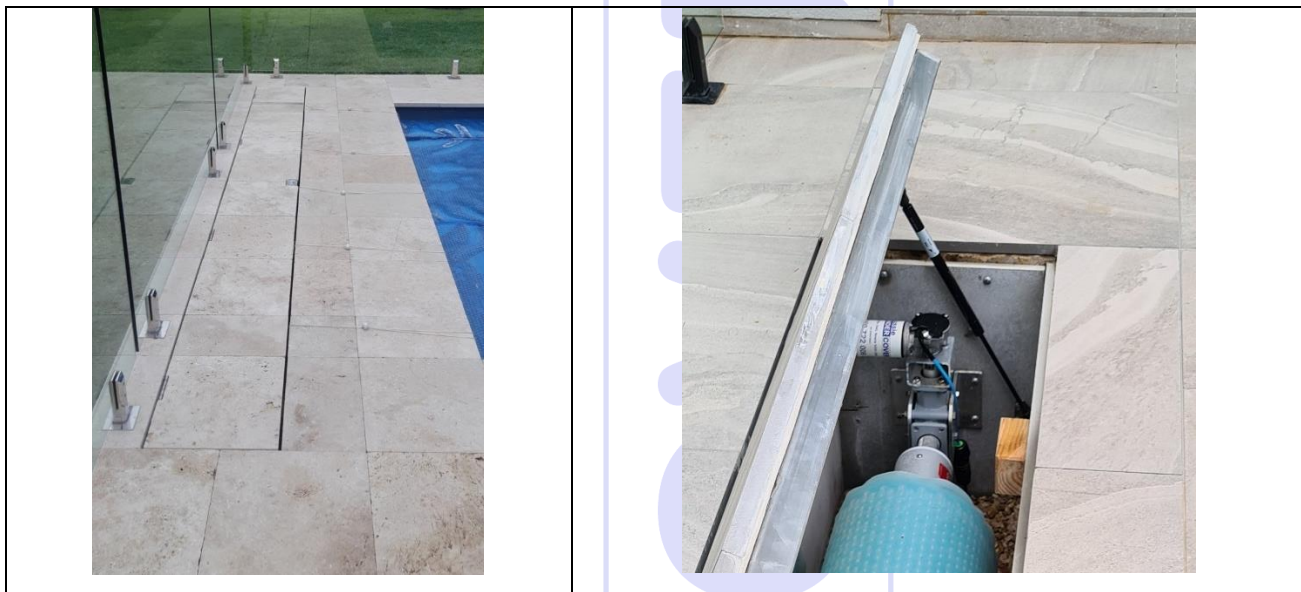
**Cut timber around hinge**





## 10. Finalise Aussie UnderCover® Installation

- Seal all exposed timber appropriately (refer to troubleshooting section).
- Install pool cover as per manufacturer's instructions.

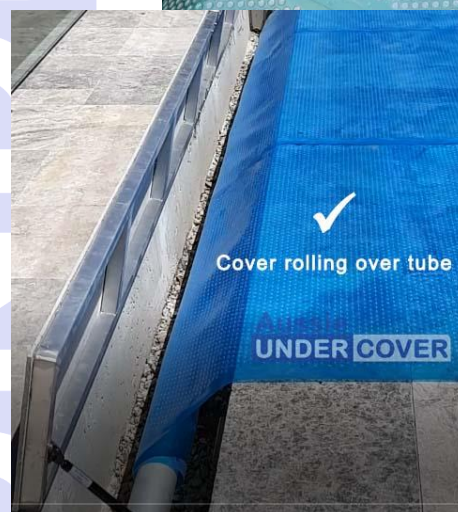
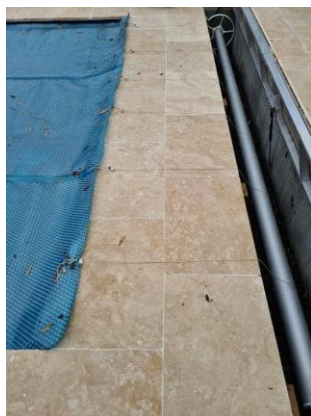


## 11. Operation

Prepare the pool cover by lifting the leading edge and ropes out of the water and fold in any step areas.

Press and hold A or B to activate the motor to retract the cover. Release the button to stop at any time.

**The cover MUST roll over the top of the tube, never underneath.**





## Replace the Cover

To replace the cover onto the pool, hold the edge of the cover and press A or B to activate the motor and pull the cover out of the **Aussie UnderCover®**

Bow over one corner of the cover to stop water scooping onto the cover and pull the cover firmly while activating the motor. **Maintain strong tension on the cover and walk forward.**



After initially lifting the cover out of the **Aussie UnderCover®**, you may also use a haul which is attached firmly to the pool cover. Ensure you maintain the tension as you pull the haul cord.

## 12. Operation & Safety

### Safety

- Please ensure that no body parts are within the opening when closing the lid. The lid is heavy, and all care should be taken.
- When closing the lid ensure that the handle sits flush to the surface.

***The lid should not be opened or closed by children.***

**Winding Cover Away** - <https://youtu.be/ot8bWCxgw0E?si=DxQH0sEwWYFUq-bX>

- Fold in any step areas
- Lift the end of the pool cover out of the pool (where it connects to the **Aussie UnderCover**)
- Insert the handle onto the gearbox and wind gently or use the remote.
- Adjust the cover as required. Note: folded areas may cause the cover to twist while winding in and may require slight adjustment during the wind.

### Pulling Cover Out

- Pull the cover out of the Aussie UnderCover®
- Fold one corner into the centre
- Using the opposite corner, pull the cover over the pool
- Remote: press the remote and pull the cover maintaining strong tension
- Adjust the cover so it sits neatly on the water's surface
- Note: if using a hall cord, fold the cover to prevent it from scooping water while being pulled out

## 13. Maintenance and Trouble shooting



- Wipe over all surfaces to remove water regularly.
- Spray surfaces of the gearbox/motor, handle, latch, hinges, and turning ends of the tube assembly, together with the gas strut ends and barrels, with Inox or similar (non water-based product) product every 3-4 months to ensure smooth movement and avoid surface corrosion, especially following periods of rain.
- When closing the lid ensure the handle is flush with the ground. Clean and spray as required.
- Check and tighten any loose screws.

If any corrosion does appear, clean with a scouring pad removing any surface rust, and recoat with spray.

### Roller Tube Assembly

The Roller Tube Assembly must be completely level and should roll freely. If it does not roll freely you may need to:

- adjust the position of the End Mount to ensure the Roller Tube Assembly is level, and/or
- loosen the screws in the mounting brackets to give the system a bit of 'play', and/or
- It may also assist to add some packing behind the End Mount bracket if the roller tube is catching. As timber is a natural product it does not always provide a level surface

### Pool Cover Strings/Ropes

There should be a gap (approx 5mm) between the timber on the lid and the trim around the Hide Away, which leaves plenty of room for the strings to move freely. They should also avoid crossing over any of the lid stops.

### Hardwood decking

If using hardwood decking (eg merbau) as your lid cover material, ensure you seal the timber on all sides or wash it down thoroughly before installing the pool cover as it will leach tannalith which may stain the aluminium of the lid frame and cover.

### Gas Struts

If the lid frame does not close properly once the lid material is installed, you can lower the Inside Strut (this will reduce the lift):

- Remove the inside strut and brackets. Use the existing bottom drill hole for the top of the bracket and drill new holes for the bottom of each bracket.
- Reattach the gas strut. If this doesn't work, please call and we can reduce the strength of the strut.

**NOTE: If you have purchased or installed this unit for someone else or a customer, please leave these instructions with them.**