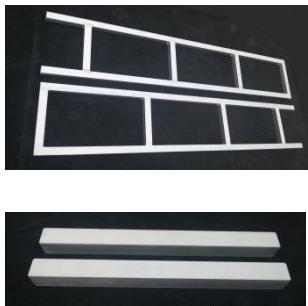



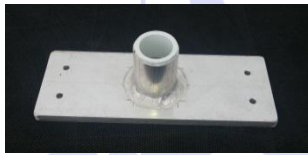







POWER Under Deck Installation Instructions

Tile or Timber Lid Frame

(Petite, Narrow, Small, Medium and Large, LargePlus Kits)

Note: Finished lid is usually 600/800mm wider than the water edge width of your pool

Kit inclusions		
 <p>One set</p>		
Lid frame with attached stainless steel hinges	attached stainless steel hinges	Handle Support Plate (Tile finish only)
		
Gearbox assembly	End Mount & bushing	Winding handle
		
Gas Shock & Stainless Steel Brackets	End Slug	Roller tube & 2 end slugs
Decking Documentation Fixing Hardware & Installation Instructions Strut Setup	 <p>(not included)</p>	Additional crossbars with brackets and screws are available upon request to match existing screw lines. (additional cost)

READ ALL INSTRUCTIONS BEFORE COMMENCING

Items to Purchase		
Lid Timber	Timber slats or Tiles	Personal choice.
	Screws (if required)	Self-tapping screws to fix timber slats (30mm)
Lid Tiles	Tiles, FC sheet listed on your order (e.g 4.5m or 6.5m Hardipanel) All weather flexible adhesive, eg Armourflex or Ardex or similar	

Table of Contents

Instructions	3
1. Under deck Installation	3
2. Assemble Lid Frame	4
3. Extending Lid Frame (Wide timber boards)	5
4. Setting Lid Frame in the Deck (LIDS WITH PRE-ATTACHED HINGE PLATES)	6
5. Finishing Lid Frame with Timber	Error! Bookmark not defined.
1. Install Gearbox and End Mount	12
2. Install Gas Strut(s)	12
Outside Strut(s) 525mm	12
Inside Strut(s) 455mm	13
3. Install Tube Assembly (LargePLUS/MAX skip to point 8)	15
4. LargePLUS/MAX - Roller Tube Assembly	16
5. Complete Lid Frame and Handle in Timber (Tiles go to Point 10)	17
6. Install handle support (If using tiles on the lid frame)	18
7. Completed Lid frame in Tiles	18
8. Finalise Aussie UnderCover® Installation	19
9. Operation	19
10. Safety	21
11. Maintenance and Trouble shooting	21

NOTE: If you have purchased or installed this unit for someone else or a customer, please leave these instructions with them.

Your comments or amendments to the instructions are welcome – 1300 722 009

You will need:

Drill
5/16 Hex head bit & square drive bit
Hammer
Small flat head screw driver

Level
Tape measure
Pencil
Material for lid frame and screws

READ ALL INSTRUCTIONS BEFORE COMMENCING

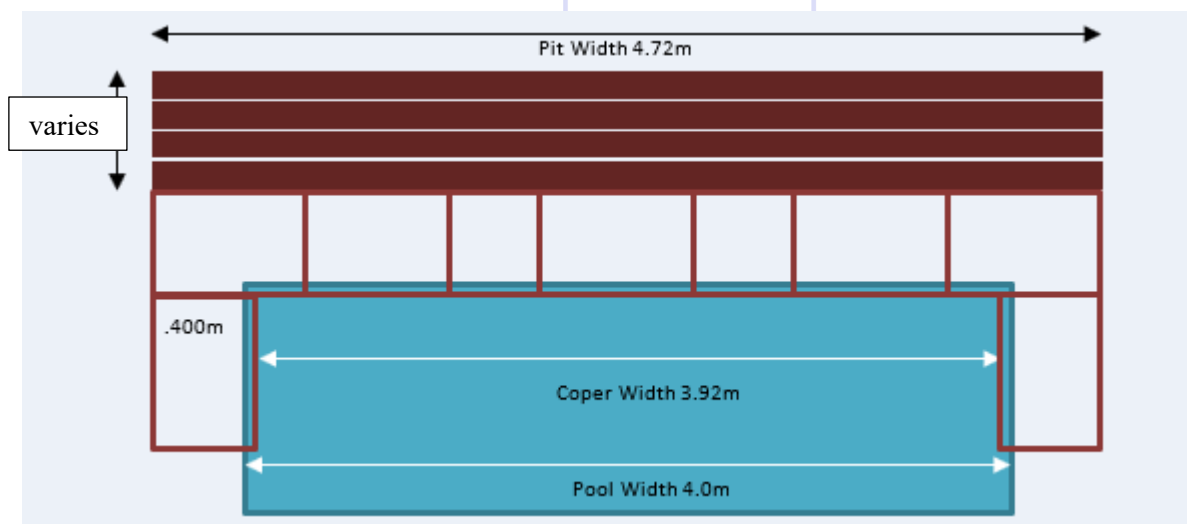
Instructions

The standard area required to install the kit in-ground, under deck or in a concrete or other type of pit allows 300mm past the water line edge on each side of the pool. This can be reduced to 100mm on the non-winder side if space is an issue. It can also be flush with the waterline but the End Mount brackets should be recessed if possible.

1. Under deck Installation

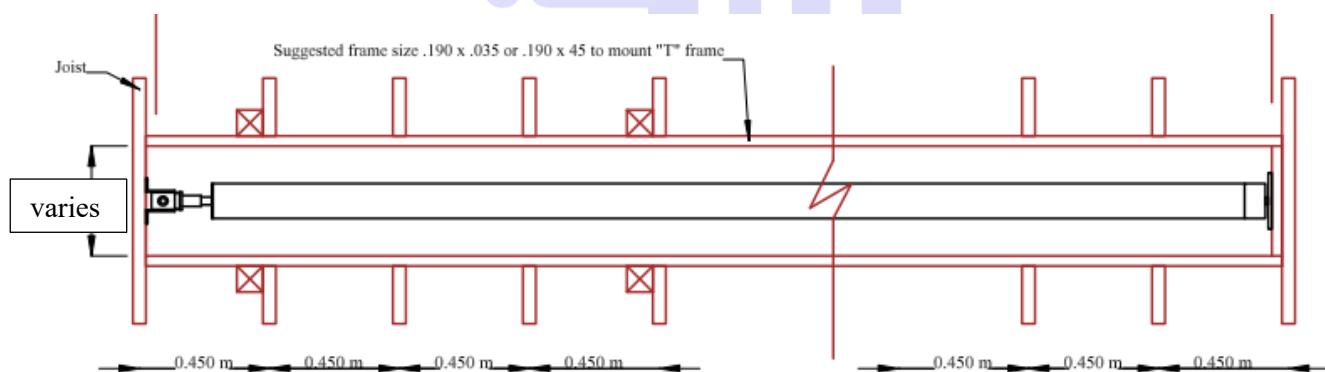
Under deck

- Cut or create an opening in the deck to suit the **Aussie UnderCover®** lid frame.
- Frame the opening to provide anchor points to mount the Gearbox, End Mount and gas shock brackets.
- **IF DECK IS NOT 500mm ABOVE GROUND, IT IS IMPORTANT THAT APPROPRIATE DRAINAGE BE PROVIDED OR A BILGE PUMP INSTALLED**



Pool water line width – coper overhang + coper width
e.g. 4.0m – 0.08m + .8m = 4.72m

Deck/Pit Opening Size

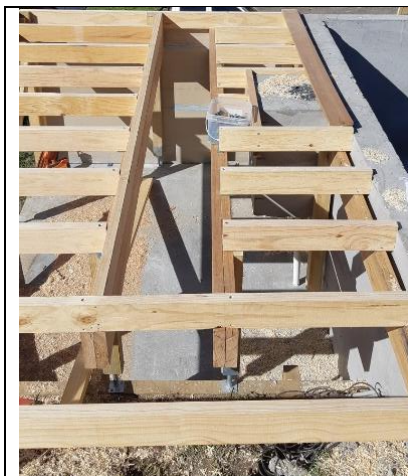


NOTE: In both the in-ground installation and under deck/concrete installation, the completed lid frame should be 20mm shorter than the internal measurement of the completed concrete opening. This allows for a 10mm gap at each end. The lid frame covering material (e.g. tiles or hardwood decking) will overhang these gaps.

NOTE: These measurements will need to be adjusted if reducing or increasing the lid frame/pit/deck opening

SPECIAL LAYOUT

176 Millboard, 180mm EkoDeck or similar very wide boards, refer to pages 9 & 10.



Cavity lining 190 x 35 or 245 x 35 as required



Additional cross braces are available, upon request (at additional cost) to match existing screw lines



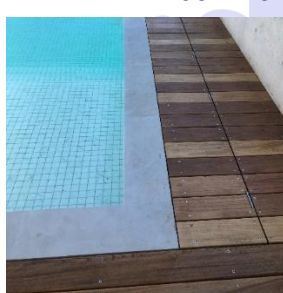
Cross brace



Timber 65 x 19 boards (6 boards)



Standard width pit for board across the lid frame (390/400mm)



Merbau 90 x 19 (4 boards)



Millboard 176 x 32 (2 boards) Cut hinges into rear board



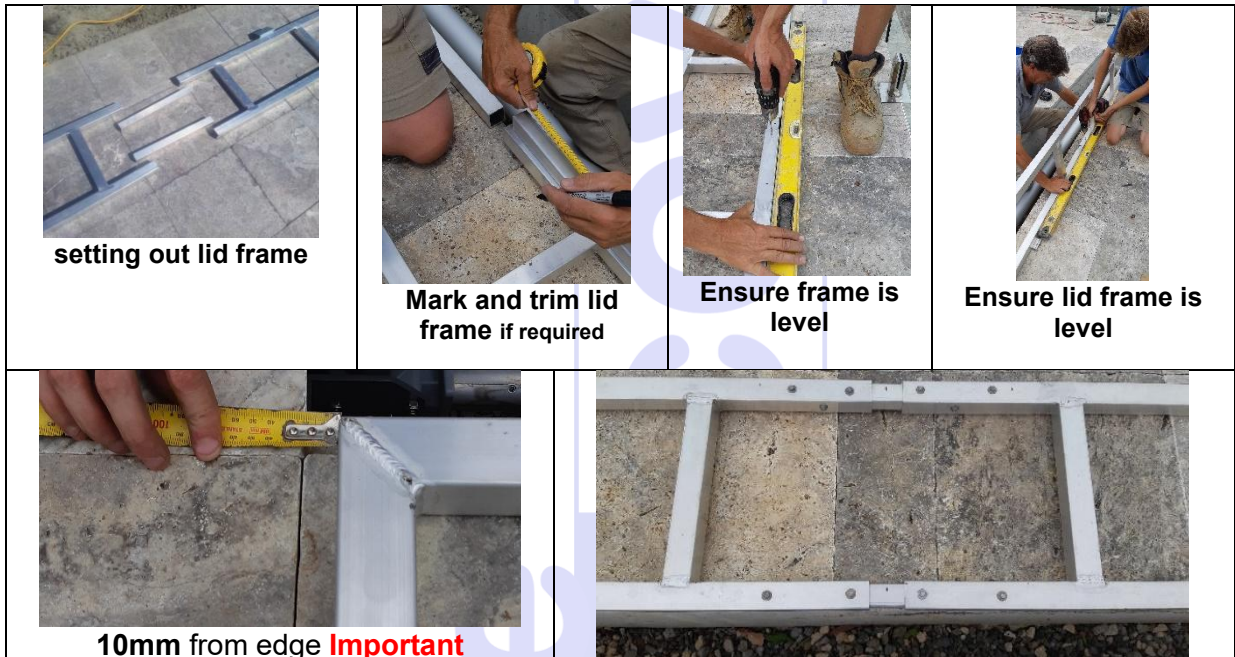
Timber 135 x 22 (3 boards)

2. Assemble Lid Frame

POWER LID SYSTEM

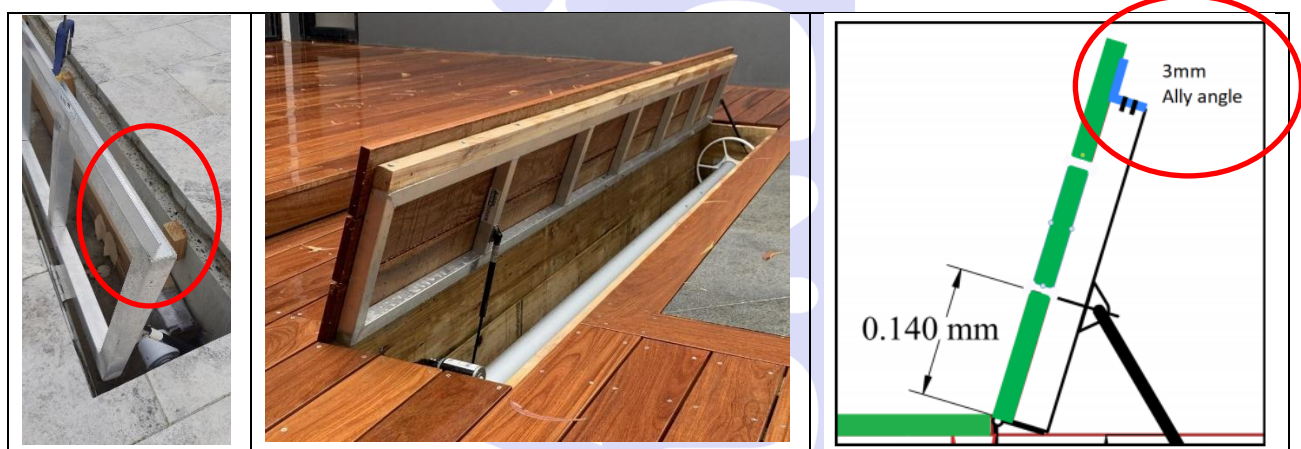
If you have the Powered Lid System, use the supplied Long Joining Bar on the front side of each lid frame (refer to Power Lid System instructions)

- The welds on the TOP of the Lid Frame are ground smooth
- Trim extension arms to suit your finished lid length, if necessary
- **ENSURE YOU LEAVE A 10mm GAP AT EITHER END.**
- Insert joiners and bring both sides of the lid together to the appropriate length
- Fasten with metal tech screws provided on inside and bottom (welded side) of frame ensuring it is level. Do not screw into the top surface.
- Ensure the lid frame is level vertically and horizontally.



3. Extending Lid Frame (Wide timber boards)

Use an 3mm aluminium right angle (not provided) and screw to the front edge of the lid frame, ensuring you leave at least a 5mm gap to the edge of the pit or deck. Timber can be used but weight needs to be considered.



4. Setting Lid Frame in the Deck (LIDS WITH PRE-ATTACHED HINGE PLATES)

- **Using a piece of your decking** (the width of the lid frame) and the supplied Support Bar, attach both across the top of **two middle hinges**.
 - NOTE: Only use spacers if you need to increase the height to match the hinges
- Lift the lid and place into the pit, **ensuring you have a 10mm gap at either end**.
 - **Make sure the Support Bars are touching both sides of deck before drilling.**
 - Predrill through the holes at the base of each hinge plate if necessary
 - Fix with 50mm screws
- Mark the top of the Lid Block so it can be repositioned the same way
 - Position and predrill the Lid Blocks. (Not directly opposite the two hinges)
 - Apply adhesive to the back of the Lid Blocks before screwing to the wall with 100mm screws.
- **Screw the Support Bars to the next two hinges** (one at each end) and repeat the process.
 - **Make sure the Support Bars are touching both sides of the deck before drilling.**
- Repeat again for the Large and Large+ kits.



10mm gap



Ensure the Support bar is flush with both sides of the deck



Predrill & screw bottom of Hinge Plate



Clamp lid block

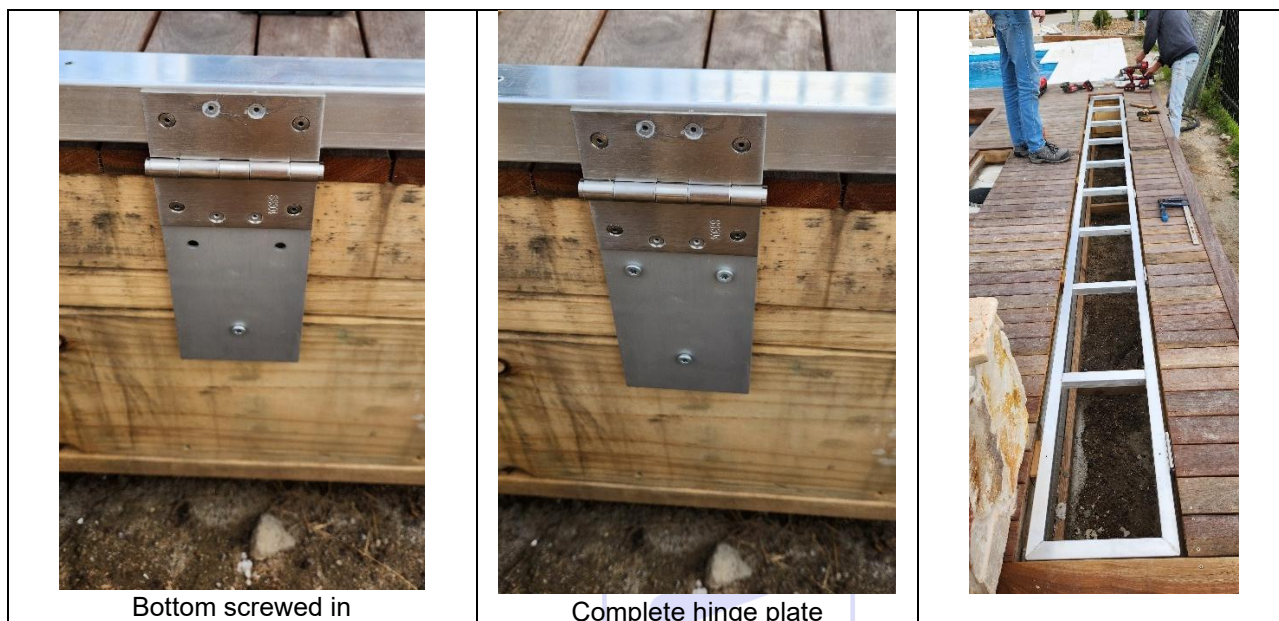


Position lid Block, redrill the existing hole if necessary



Glue and install Lid Block



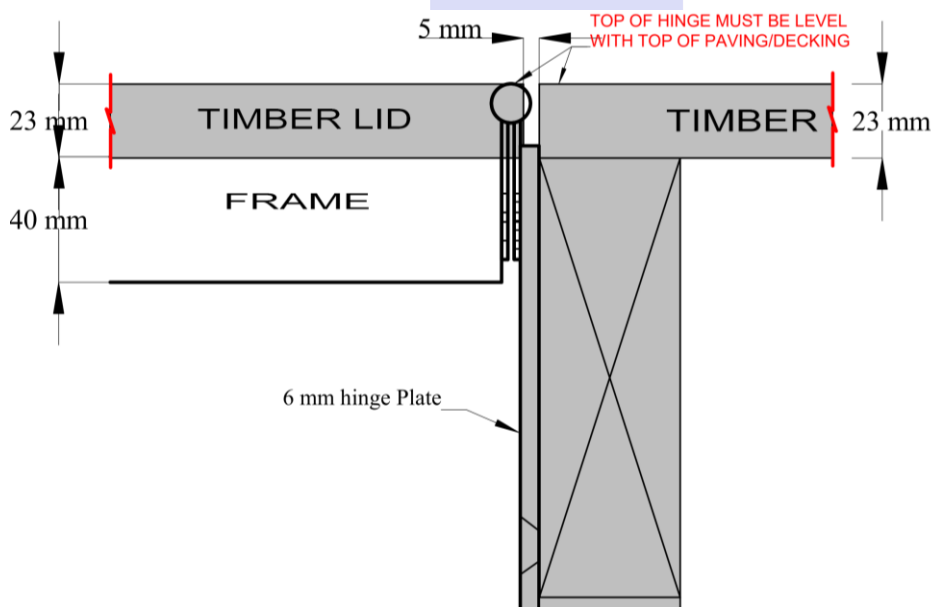


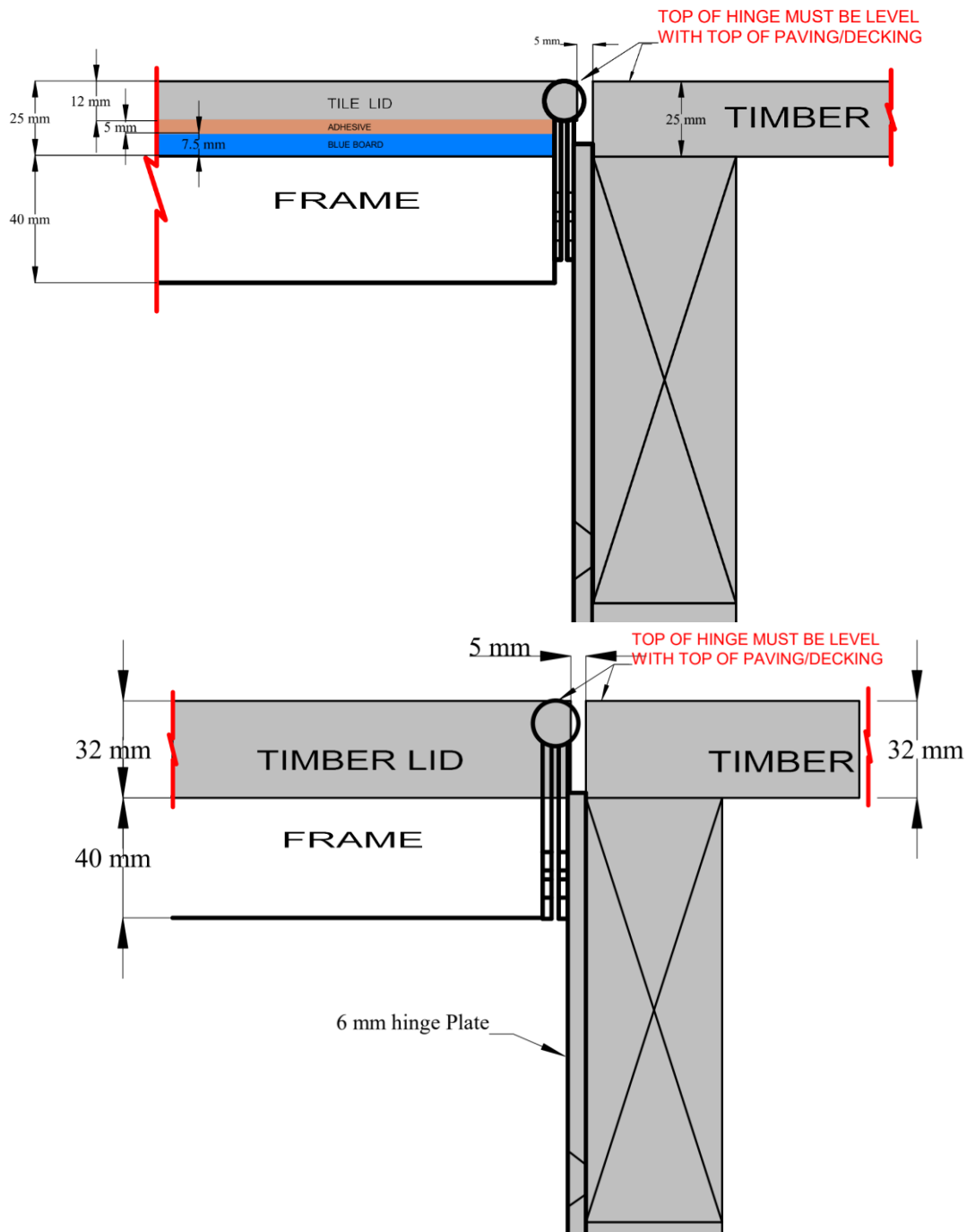
Make sure the lid frame sits flat and level on all lid blocks. If there is a twist in the lid frame, you can apply pressure to bend it slightly. Refer to video <https://youtu.be/gUwxBT04OdY>.

MAKE ANY NECESSARY ADJUSTMENT TO THE LID FRAME NOW

5. Lid Frame Timber Layout

- Generally the timber on lid is notched around hinges, BUT for
- 176 Millboard, 180mm EkoDeck, or similar very wide boards, refer to pages 9 & 10.



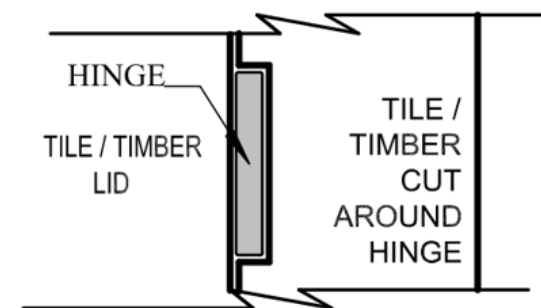
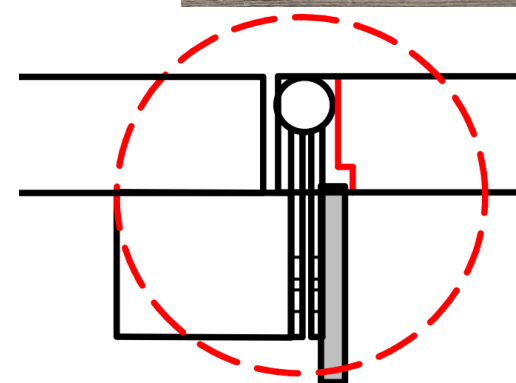
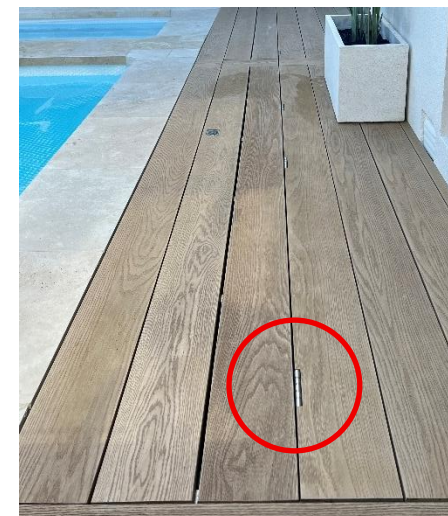
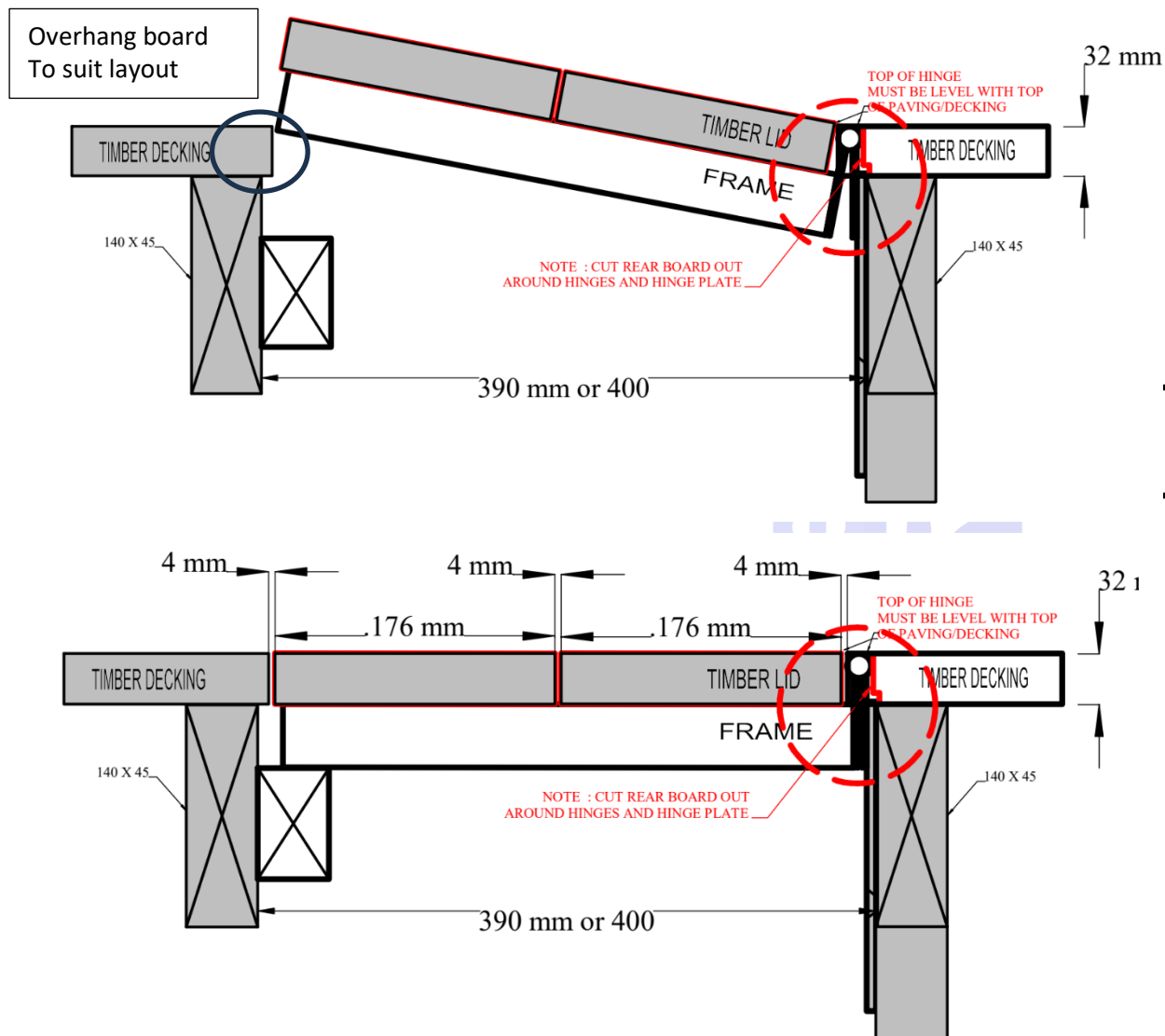


Lid frame side

Rear board

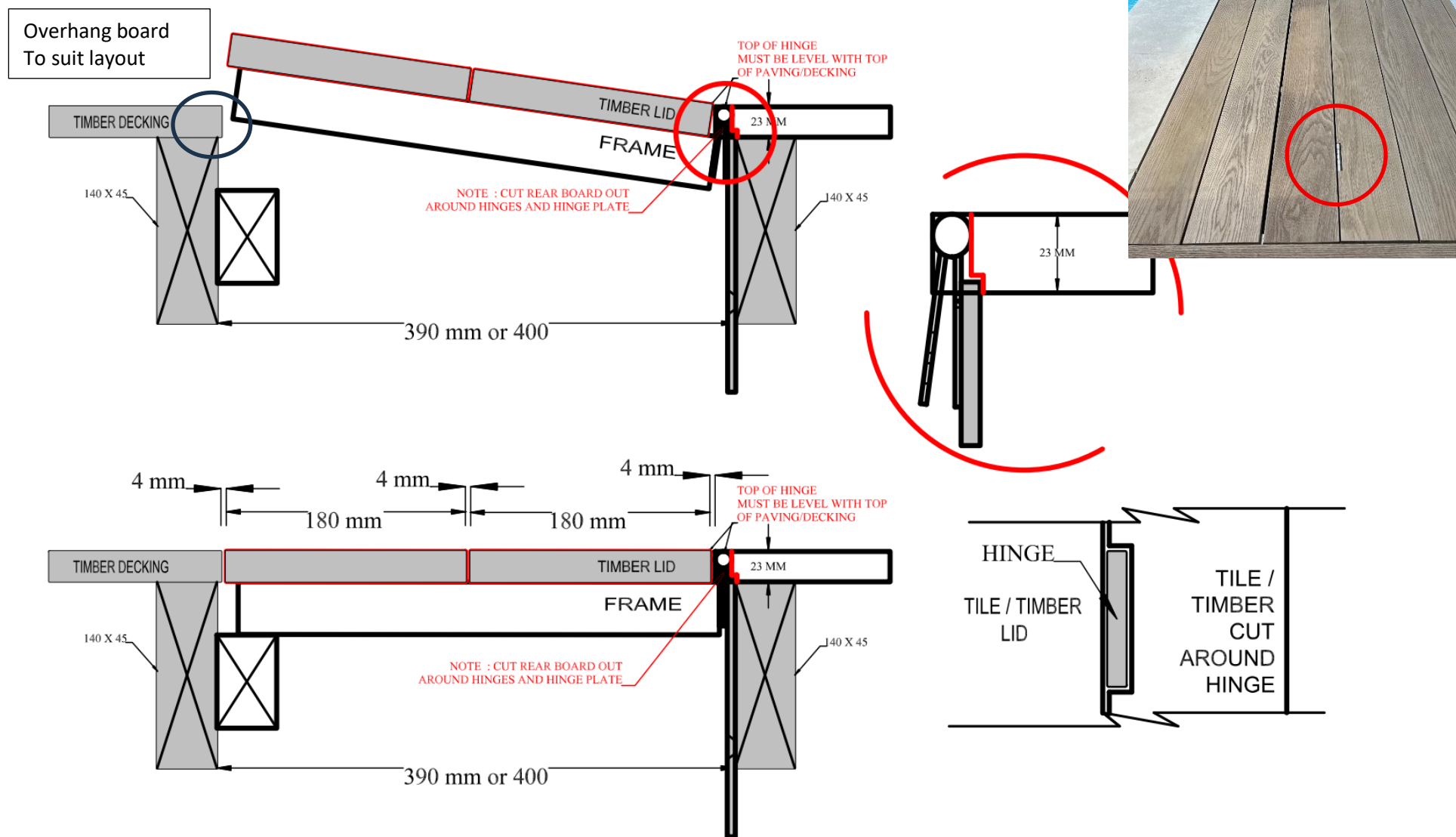
176 MILLBOARD

HINGES NOTCHED INTO DECKING BOARD ON REAR WALL OF PIT, NOT ON LID FRAME



180 EKO DECK

HINGES NOTCHED INTO DECKING BOARD ON REAR WALL OF PIT, NOT ON LID FRAME

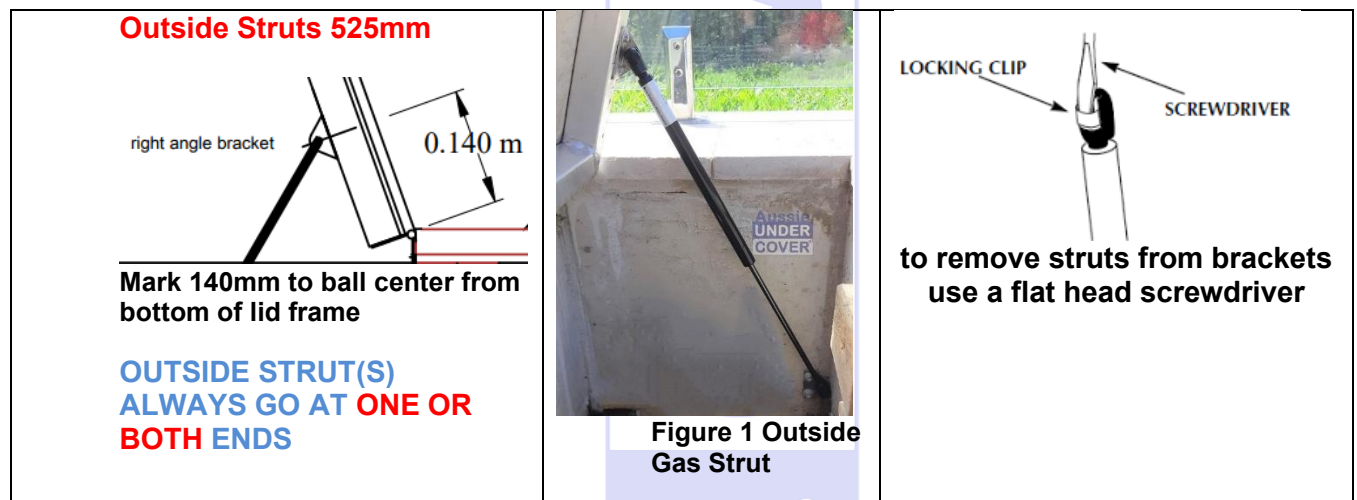


6. Install Gas Strut(s)

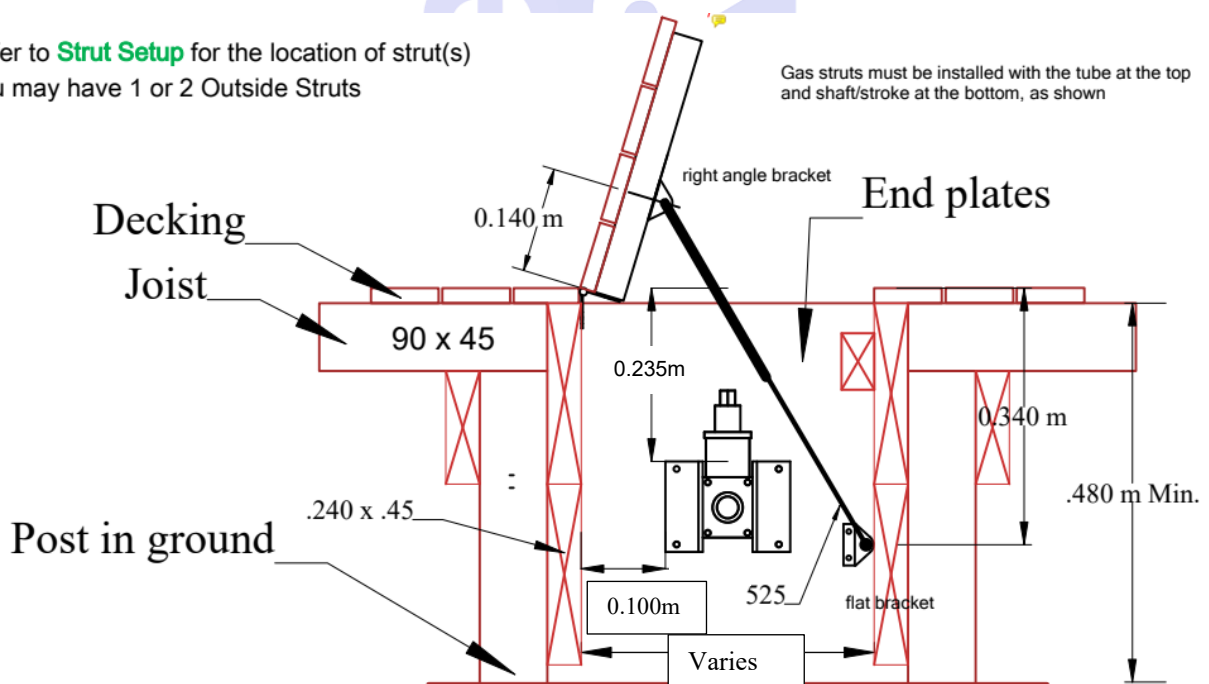
Actuators – (refer to Separate Power Lid System Instructions)

Outside Strut(s) 525mm

- **Count your gas struts**
- **Refer to Strut Setup Diagram for layout**
- Install the **525mm OUTSIDE** Strut FIRST – 25mm metal self-drilling & 25mm timber.
- Mark 140mm to ball centre from bottom of lid frame, attach the right angle bracket.
- Measure down approximately 340mm on the front corner of the pit. Mark and install the flat bracket – making sure that the ball is facing the corner.
- If gas strut(s) interfere with the gearbox or end mount reverse the direction of the L Bracket.
- **Make sure the winding handle does not interfere with the open lid. Adjust the position of the bottom bracket if necessary.**



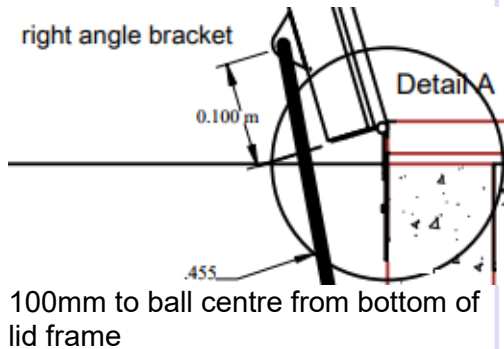
Refer to **Strut Setup** for the location of strut(s)
You may have 1 or 2 Outside Struts



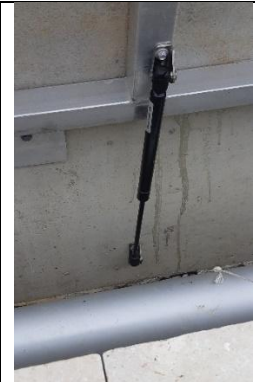
Inside Strut(s) 455mm

- **Ensure the lid frame is open to its full extension**
- Install the **455mm** gas strut(s) on the inside of the lid frame **Diagram 3**
- Attach the right angle strut bracket to the lid frame first 100mm up from the base of the frame
- Attach the strut to the bracket
- Attach the other right angle bracket to the end of the strut and mark drill holes where the bracket meets the rear pit wall
- Remove the strut from the lower bracket, drill the marked holes, insert concrete plugs, and screw the bracket into place. Reattach the gas strut. You may have 1 or two inside struts
- Leaving 1 x 455mm gas strut connected, disconnect all other strut(s) from the brackets and close the lid frame.
- Weight the lid down to keep it closed if necessary.

Inside Struts 455mm

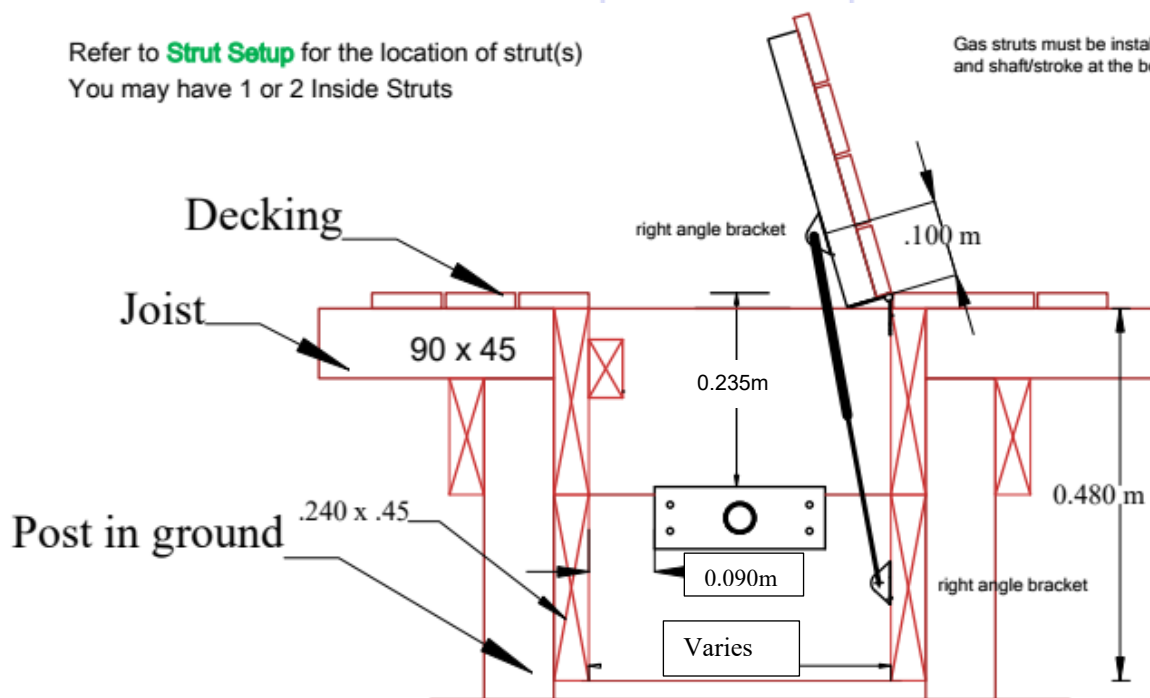


Mark 100mm to ball centre from bottom of lid frame



Completed Inside Strut

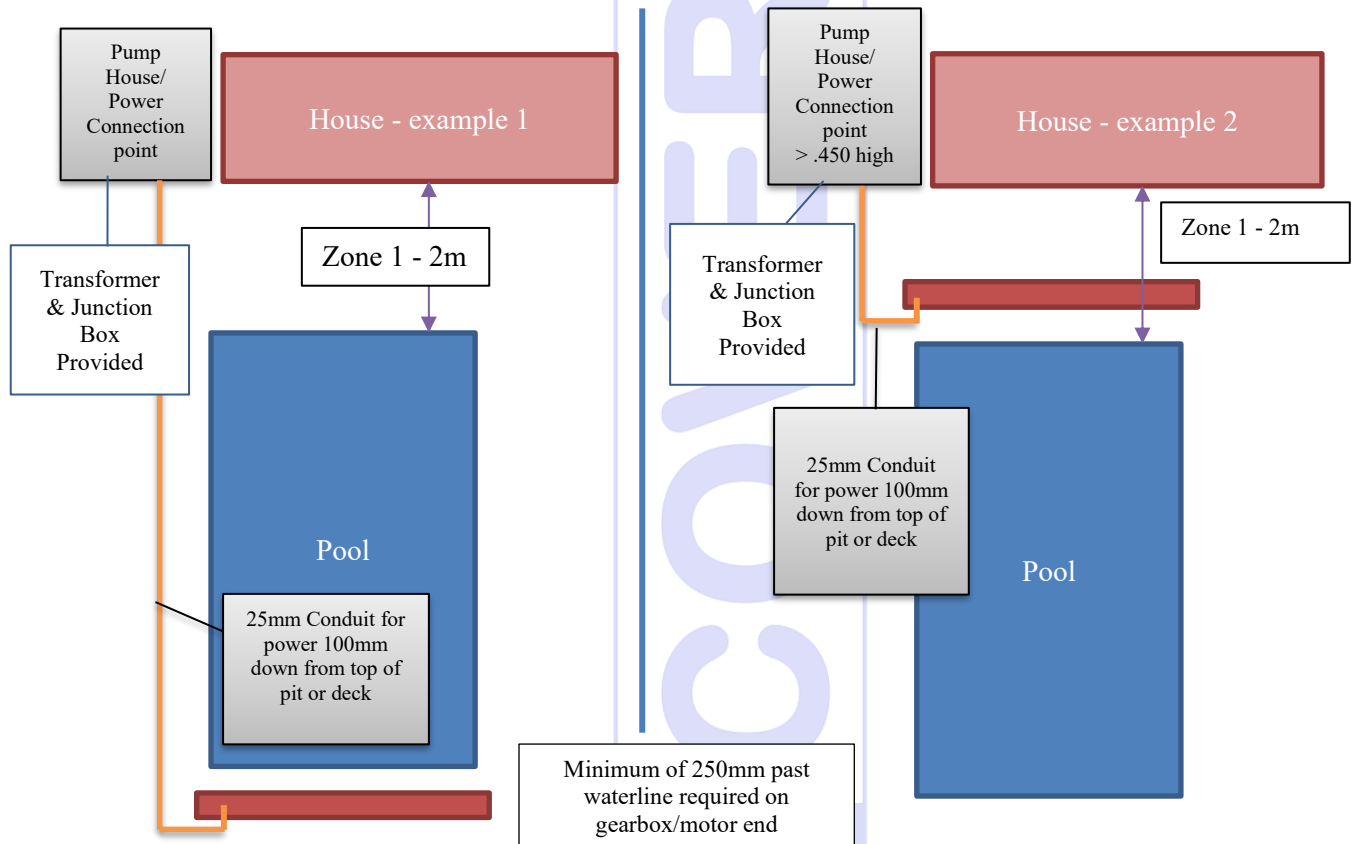
Refer to **Strut Setup** for the location of strut(s)
You may have 1 or 2 Inside Struts



Gas struts must be installed with the tube at the top and shaft/stroke at the bottom, as shown

7. Install Gearbox and End Mount

Ideally the transformer is located with your pool equipment. Other than an appropriate power point, an electrician is NOT required for installation. 25mm to 40mm conduit is required into the pit to the end where the power gearbox will be installed, down 100mm from top of deck or tile/paver level. The power gearbox is a 24V system and can be installed at either end. Wire (10m) and connections are provided in the kit as standard.



- Install the motor/gearbox using (4) 50mm concrete screws as shown below
- Install the end mount (with white bushing) using 4) 50mm concrete screws as shown below
- Run the provided cable (24 volt) through the conduit to the motor in your pit or deck area.
- Mount the transformer and the connected junction box at the power point (with the pool equipment)
- Connect the conduit cable to the motor screw connector.



End Slug attached to gear box



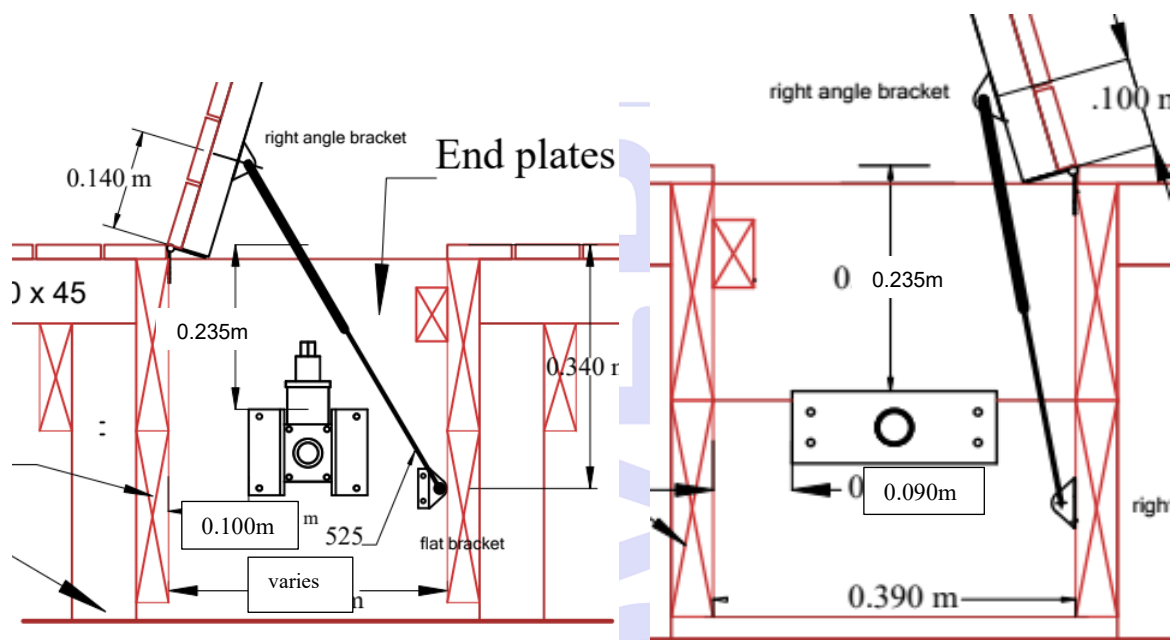
Gearbox assembly



Install end mount

THE MOTOR MUST BE INSTALLED AS SHOWN, IT CANNOT BE SIDWAYS OR UPSIDEDOWN.

The gold pin in the gearbox assembly can be removed to disconnect the motor from the roller tube in the event of power loss. Use the handwheel for manual winding.



8. Install Tube Assembly (LargePLUS/MAX skip to point 8)

- Remove tube from box and all plastic covering. Slide tube sections apart so you have at least 500mm exposed at each end. Take care when separating the tubes so they don't jamb.
- Secure the small 95mm End Slug into the small end of the roller tube using three (3) 20mm self-tapping screws provided. **(see below for LargePlus kits)****
- The large 100mm End Slug is pre-attached to the gearbox.
- Screw the handwheel to the end slug prior to connecting it to the gearbox and end slug. Hex Head type 17 timber screws provided in Pack 4
- Place the roller Tube into the cavity
- With the assistance of a 2nd person for support, insert the short End Slug shaft into the End Mount.
- While holding the tube in place, expand the tube and slide it onto the End Slug attached to the gearbox. You should have approx. 5mm play at the End Mount end and the tube should roll freely.
- Screw the roller tube to the large End Slug using three (3) 20mm self-tapping screws provided
- Line up holes for the feather clips then install 6 x tube joining self-tapping screws through the 6 x red indicator holes. Support the tube while you do this.
- Push in the feather clips for the pool cover along the roller tube as appropriate. Drill extra holes if needed.
- Remove the gold pin to test rolling the tube. Replace once done.

Power Lid Frame

If using actuators, install the handwheel on the motor end of the roller tube.





Roller tube



Install Small 95mm end slug



Insert the short End Slug into the End Mount



Insert tube assembly onto the end slug attached to the gearbox and screw in place



Secure tube joining screws



Install extra feather clips if necessary

9. LargePLUS/MAX - Roller Tube Assembly

**** NOTE: the LARGEPLUS/MAX kit will have a three piece roller tube which will need to be cut back for use.**

- Remove tube from box, separate pieces.
- Dry measure the length you need after the gearbox and end mount have been installed. Cut one of the 2.5m section down to achieve your overall length.
- Attach the 100mm end slug.
- Slide the tube pieces together.
- Dry fit into the pit/deck onto the gearbox and end mount.
- Install the tube joining self-tapping screws through the red indicator holes. Support the tube while you do this.

10. Complete Lid Frame and Handle in Timber (Tiles go to Point 10)

- Install lid material onto the Lid Frame. Starting at the hinge side adjust board to fit the available space, cut around hinges. Allow approx. 5mm spacing with approx. 5-10mm overhang at the front edge of the Lid Frame. Pre-drill and countersink all boards if using hardwood
- Centre and install the handle with the screws provided. Use a 12mm spade bit to carve out the timber, being careful not to drill to close to the edges where the 4 anchoring screws will be fitted.
- Pre-drill the four holes for the anchoring screws.
- Reconnect all gas struts.



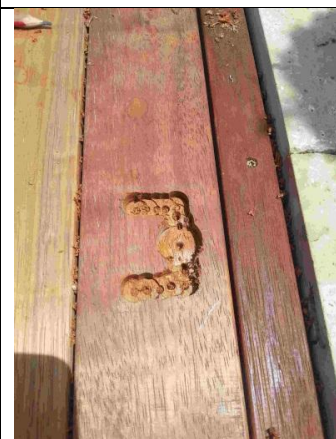
Pre-drill and countersink decking boards for lid



Screwing decking boards on Lid Frame



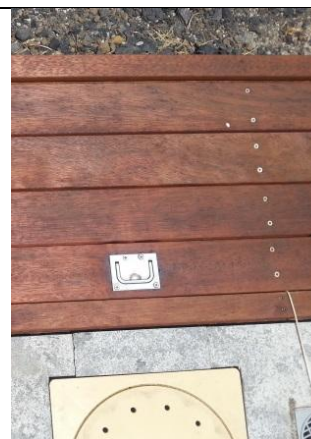
Marking handle position



Completed drilling using speed bit



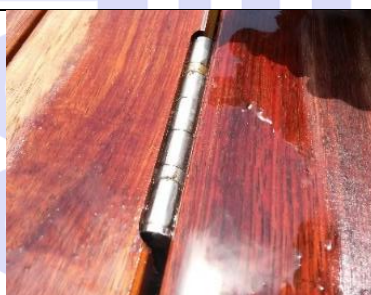
Attaching handle



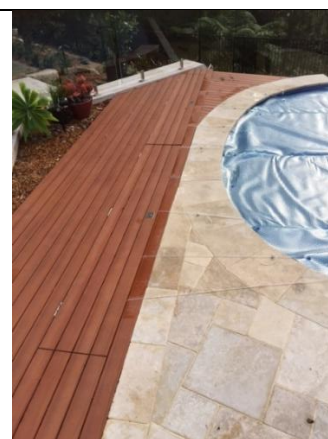
Completed handle



Note: the handle can be installed either way



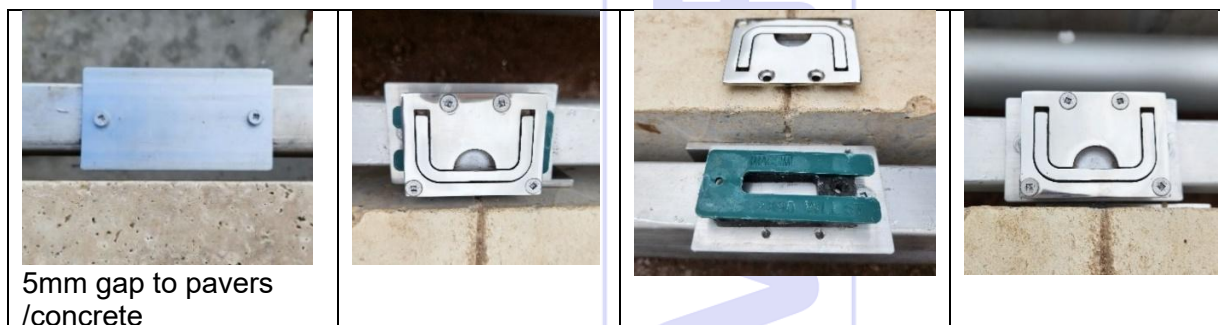
Cut timber around hinge



11. Install handle support (If using tiles on the lid frame)

Handle support plate for Flush Pull handle and tiles

- Attach the Handle Support Plate to the lid frame as shown using the 30mm self-drilling screws provided, leaving a 5mm gap
- Predrill the Flush Pull screws with the 4mm drill bit. Use shims/spacers to lift the Flush Pull level with the surrounding paver, concrete or deck surface and insert the (4) 40/50mm square drive self-drilling screws provided

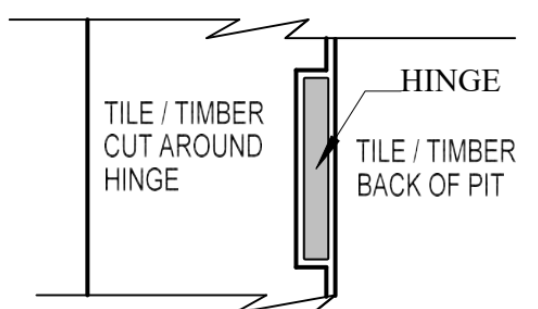


12. Completed Lid frame in Tiles

- Glue & screw HardiPanel or FC Sheet to the lid frame in front of hinges
- Cut base board around the Flush Pull
- **Tiles must be cut 10mm narrower than the pit width leaving leaves a 5mm gap on all edges when finished**
- Tile the lid frame using a flexible adhesive eg **Armourflex Ardex or similar**.
- Cut/grind tiles around the hinges and Flush handle
- Once the tiles are set and dry, open the lid (it will be heavy) and re-attached all the gas struts.



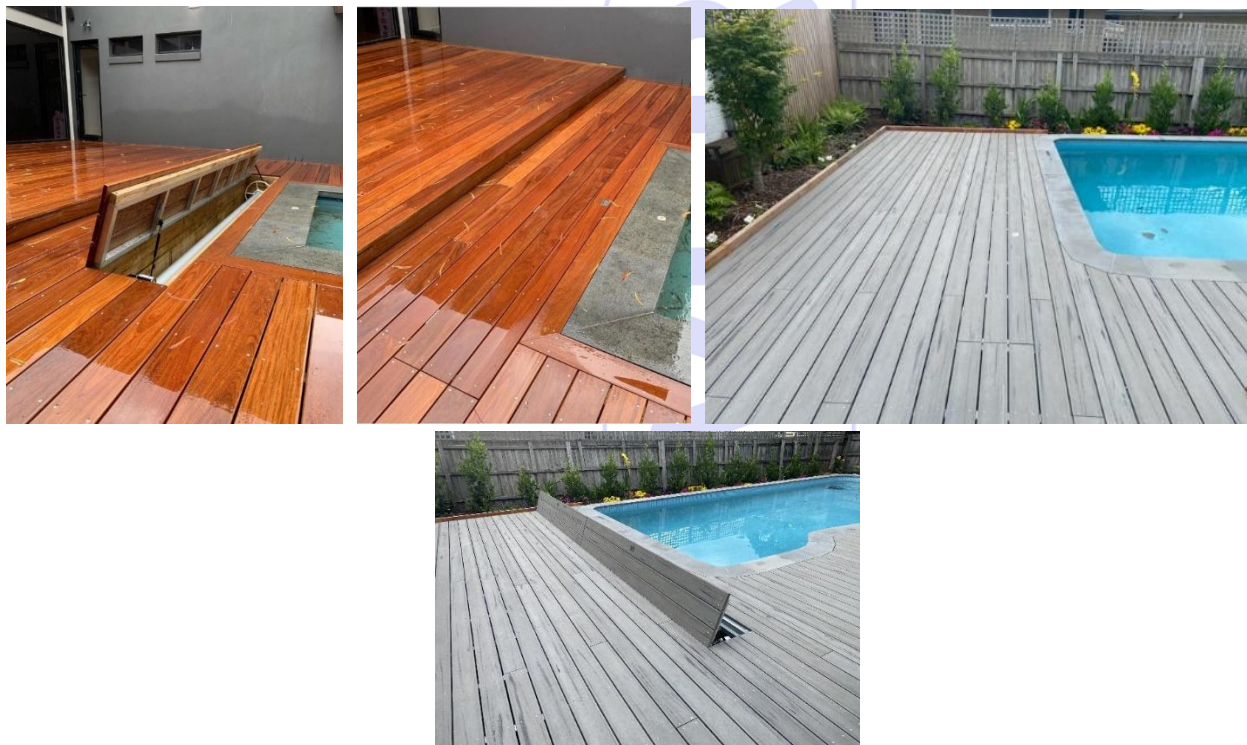
NOTE: Various tiles/timber have different weights. If you find the gas struts are not strong enough or too strong for ease of opening and closing, please contact us.



Example Only

13. Finalise Aussie UnderCover® Installation

- Seal all exposed timber appropriately (refer to troubleshooting section).
- Install pool cover as per manufacturer's instructions.
- Use remote to retract pool cover into your Aussie UnderCover®.



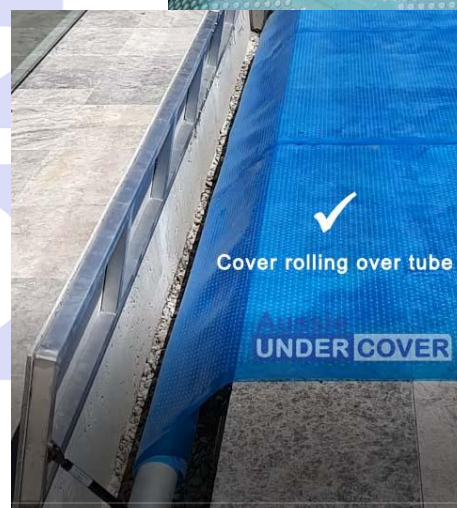
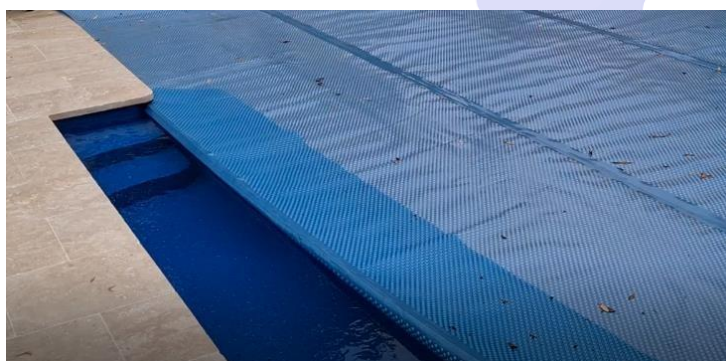
14. Operation

Prepare the pool cover by lifting the leading edge and ropes out of the water and fold in any step areas.

Press and hold A or B to activate the motor to retract the cover. Release the button to stop at any time.

The cover MUST roll over the top of the tube, never underneath.

Winding Cover Away - <https://youtu.be/ot8bWCxgw0E>



Replace the Cover

To replace the cover onto the pool, hold the edge of the cover and press A or B to activate the motor and pull the cover out of the **Aussie UnderCover®**

Bow over one corner of the cover to stop water scooping onto the cover and **pull the cover firmly** while activating the motor. **Maintain strong tension on the cover and walk forward, this will prevent the cover ropes winding around the roller tube the wrong way and jamming the cover.**



After initially lifting the cover out of the **Aussie UnderCover®**, you may also use a haul which is attached firmly to the pool cover. Ensure you maintain the tension as you pull the haul cord.

15. Safety

- Please ensure that no body parts are within the opening when closing the lid. The lid may be heavy, and all care should be taken.
- When closing the lid ensure that the handle sits flush to the surface.

The lid should not be opened or closed by children.

1. Maintenance and Trouble shooting



- Wipe over all surfaces to remove water regularly.
- Spray surfaces of the gearbox/motor, handle, latch, both sides of hinges (including the rivets connected to the frame and hinge plates), and turning ends of the tube assembly, together with the gas strut ends and barrels, plus the actuators and brackets (if applicable), with Inox or similar (non-water-based product) product every 3-4 months to ensure smooth movement and avoid surface corrosion, especially following periods of rain.
- When closing the lid ensure the handle is flush with the ground. Clean and spray as required.
- Check and tighten any loose screws.

If any surface rust or corrosion does appear, clean with a scouring pad removing any surface rust, and recoat with spray. The part will remain functional.

Roller Tube Assembly

The Roller Tube Assembly must be completely level and should roll freely. If it does not roll freely you may need to:

- adjust the position of the End Mount to ensure the Roller Tube Assembly is level, and/or
- loosen the screws in the mounting brackets to give the system a bit of 'play', and/or
- It may also assist to add some packing behind the End Mount bracket if the roller tube is catching. As timber is a natural product it does not always provide a level surface

Pool Cover Strings/Ropes

There should be a gap (approx 5mm) between the material on the lid and the pit surrounds, which leaves plenty of room for the strings to move freely. They should also avoid crossing over any of the lid stops.

Hardwood decking

If using hardwood decking (eg merbau) as your lid cover material, ensure you seal the timber on all sides or wash it down thoroughly before installing the pool cover as it will leach tanalith which may stain the aluminium of the lid frame and cover.

NOTE: If you have purchased or installed this unit for someone else or a customer, please leave these instructions with them.