



# 2021 RUBBISH REPORT TASMANIA

The 2021 Rubbish Report is a snapshot of rubbish removed by Clean Up Australia volunteers. Across TAS, the Report is based on the count of 9,559 rubbish items from 30 surveyed locations [6,691 items from 43 locations in 2020].

## 340

**SITES  
REGISTERED:**  
[280 in 2020]

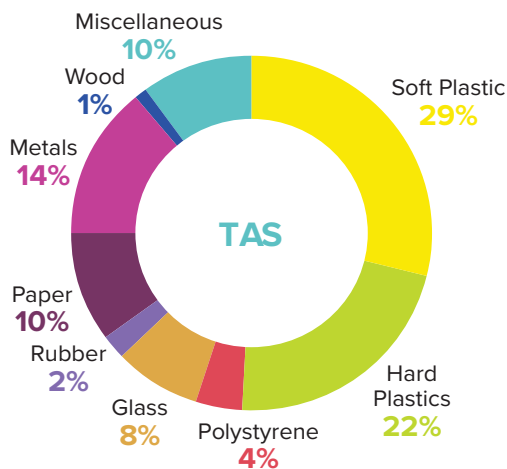
## 16,352

**ESTIMATED  
VOLUNTEERS**  
[20,067 in 2020]

## 32,704

**VOLUNTEER  
HOURS:**  
[40,134 in 2020]

## MAJOR TYPES OF RUBBISH REPORTED



## NOTABLE CHANGES FROM 2020



**12%↑  
SOFT PLASTICS**  
(as percentage of  
rubbish reported)

**2%↑  
HARD PLASTIC & RUBBER**

**1%↑  
METAL & WOOD**

**8%↓  
PAPER**

**4%↓  
MISCELLANEOUS**

**2%↓  
GLASS**

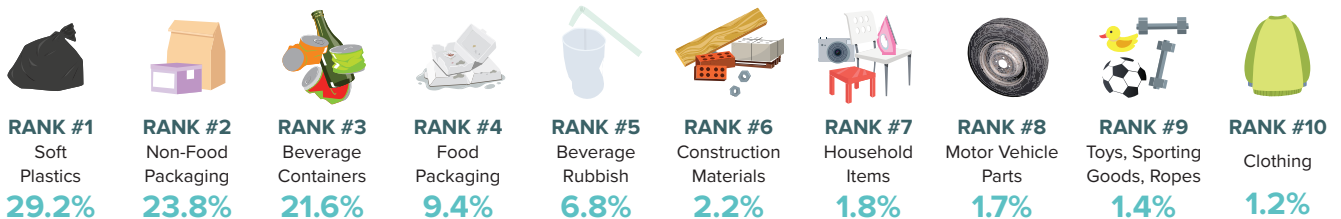
2021 participation reflects the impact of COVID-19 on volunteer desire to join with their neighbours and friends to clean up their favourite locations.

Despite local lockdowns and restrictions, Australians continued to Step Up to Clean Up with a 25% increase in the number of estimated volunteers across the nation.

This clearly demonstrates the importance volunteers place on our local parks, streets, beaches, waterways and bushland.

## TOP 10 RUBBISH ITEMS AS A PERCENTAGE OF THE TOTAL RUBBISH SURVEYED

### GROUP ITEMS

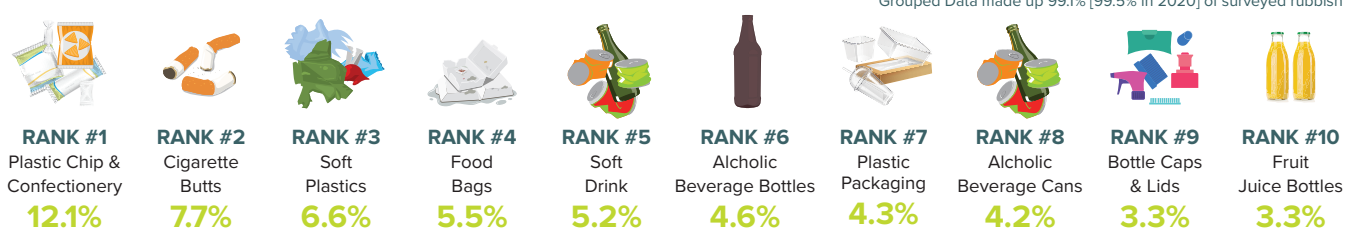


### NOTABLE CHANGES

TAS volunteers reported the highest % of soft plastic within Australia and was the only state where this grouping ranked #1 in Top 10 grouped items.

TAS, the last state to introduce a CDL, also recorded the highest % of beverage containers nationally @ 21.6% [national = 13.3%].

### INDIVIDUAL ITEMS



\*Grouped Data made up 99.1% [99.5% in 2020] of surveyed rubbish

### NOTABLE CHANGES

Within Individual Items, TAS was one of only two states NOT to report cigarette butts as their #1 item [other was SA], with plastic chip & confectionery wrappers coming in at twice the % reported nationally.

\*Individual Item Count Top 10 data = 56.8% [52.4% in 2020]

## FAVOURITE CLEAN UP SITES

TAS recorded the highest average counts of rubbish at outdoor transport and 'other' sites. School groups reported the second highest average counts in the nation.



### RIVER/CREEK/ WATERWAYS WATER STORAGE

Sites: **3**  
Items: **696**  
Total waste: **7%**  
Average # Items  
**232**

### PARKS [INCL NAT PARKS]

Sites: **6**  
Items: **1,517**  
Total waste: **16%**  
Average # Items  
**253**

### BEACH/COASTAL

Sites: **3**  
Items: **847**  
Total waste: **9%**  
Average # Items  
**282**

### ROADSIDES

Sites: **6**  
Items: **1,759**  
Total waste: **18%**  
Average # Items  
**293**

### FOOTPATHS

Sites: **3**  
Items: **1,019**  
Total waste: **11%**  
Average # Items  
**340**

### PUBLIC BUSHLAND

Sites: **3**  
Items: **672**  
Total waste: **7%**  
Average # Items  
**224**

### SHOPS/MALLS

Sites: **1**  
Items: **22**  
Total waste: **7%**  
Average # Items  
**22**

### SCHOOL GROUNDS

Sites: **3**  
Items: **1,709**  
Total waste: **18%**  
Average # Items  
**570**

### OUTDOOR TRANSPORT

Sites: **1**  
Items: **659**  
Total waste: **7%**  
Average # Items  
**659**

### OTHER

Sites: **1**  
Items: **659**  
Total waste: **7%**  
Average # Items  
**659**



## PARTNERS

#### Founding Partner



#### Partners



#### Media Partners



#### Suppliers