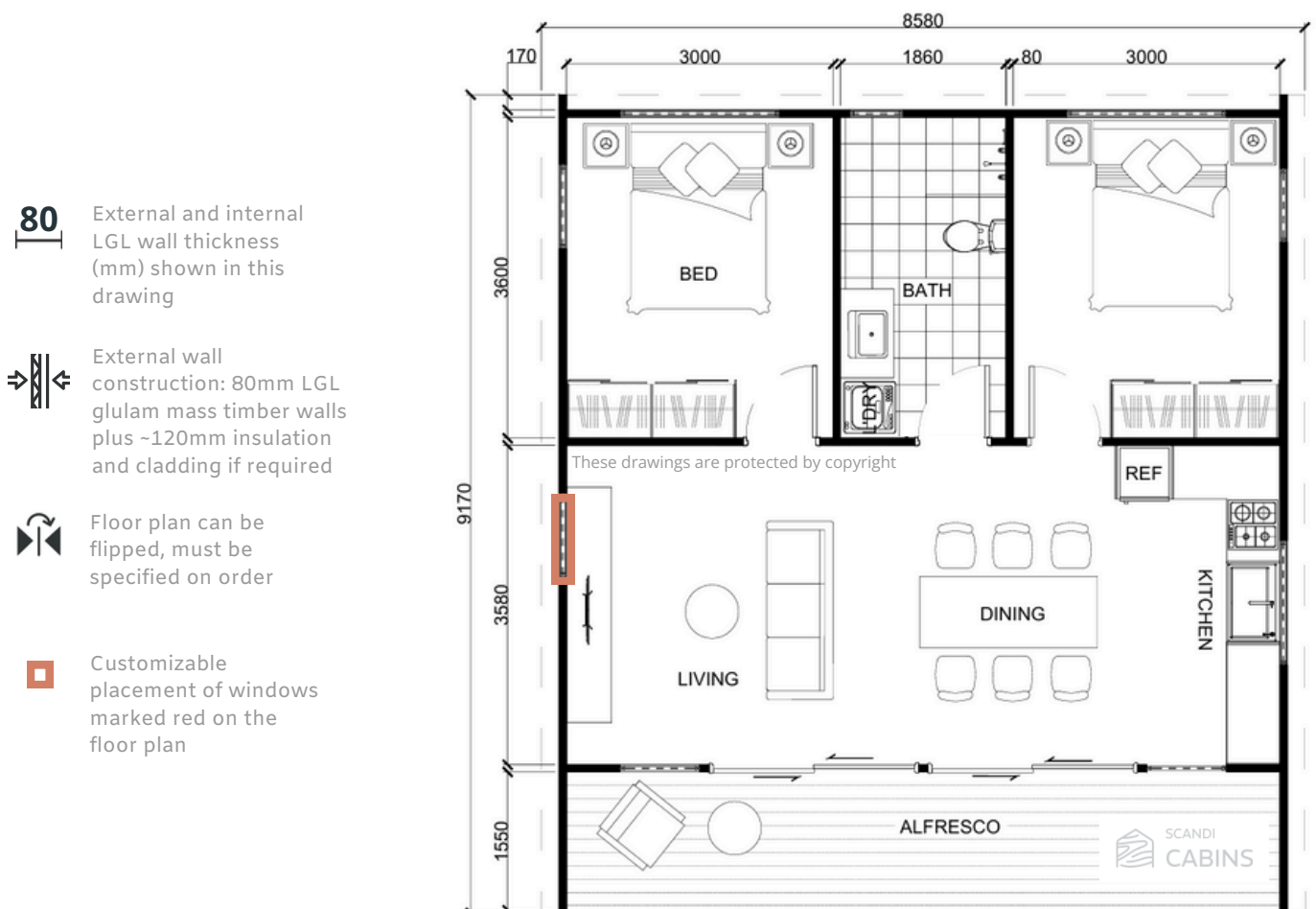


Visteca

 2
  1
  72m²



The Visteca 2-bedroom design offers modern, sleek-style living and entertaining spaces, perfect for those seeking a contemporary home. With an abundance of windows, it is light and airy, seamlessly blending indoor and outdoor living. The two bedrooms are separated by a generously sized bathroom, ensuring privacy and comfort. Designed with excellent airflow throughout, the home also features a spacious and versatile front veranda, ideal for relaxing or entertaining outdoors.



Features

Visteca



- Ample windows allow natural light
- Open-plan living
- Spacious bedrooms
- 2 bedrooms separated by a sizable bathroom
- Internal timber creates a cosy and healthy space
- Built on slab or raised subfloor
- Naturally insulated mass timber walls
- Double-glazed windows
- Prefab components built on-site in 5 days[^]

[^]on prepared foundation to lockup stage

Get in touch to discuss your project details, receive a rough estimate, or schedule a site inspection with one of our expert builders. Let's bring your dream backyard space to life!

START YOUR PROJECT TODAY

CONTACT US

