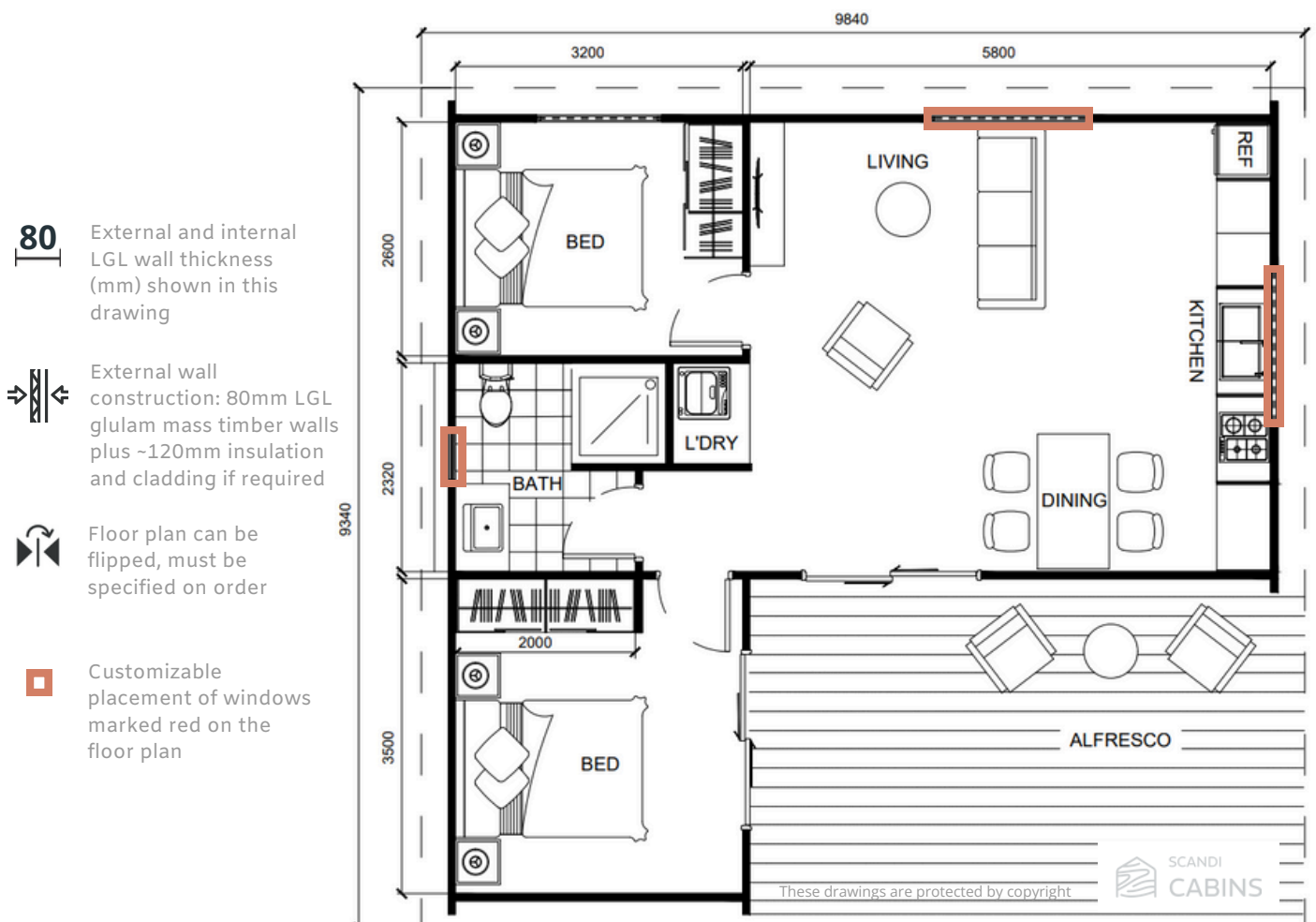


Skystera

 2
  1
  81m²



The Skystera 2-bedroom design is the ultimate accommodation for adult children, aging parents, or generating a solid rental return, featuring ultra-high ceilings for a spacious, airy feel. This thoughtful design includes two generously sized bedrooms separated by a large bathroom and an open-plan living, dining, and kitchen area that brings in plenty of natural light through expansive windows. One bedroom opens onto the veranda, perfect for starting the day with a peaceful morning coffee.



Features

Skystera



- Ample windows allow natural light
- Open-plan living
- Ultra-high ceilings
- Exposed beams create a large breathable space
- Dedicated laundry room
- Spacious bedrooms
- Generous size bathroom
- Internal timber creates a cosy and healthy space
- Built on slab or raised subfloor
- Naturally insulated mass timber walls
- Double-glazed windows
- Prefab components built on-site in 5 days[^]

[^]on prepared foundation to lockup stage

Get in touch to discuss your project details, receive a rough estimate, or schedule a site inspection with one of our expert builders. Let's bring your dream backyard space to life!

START YOUR PROJECT TODAY

CONTACT US

