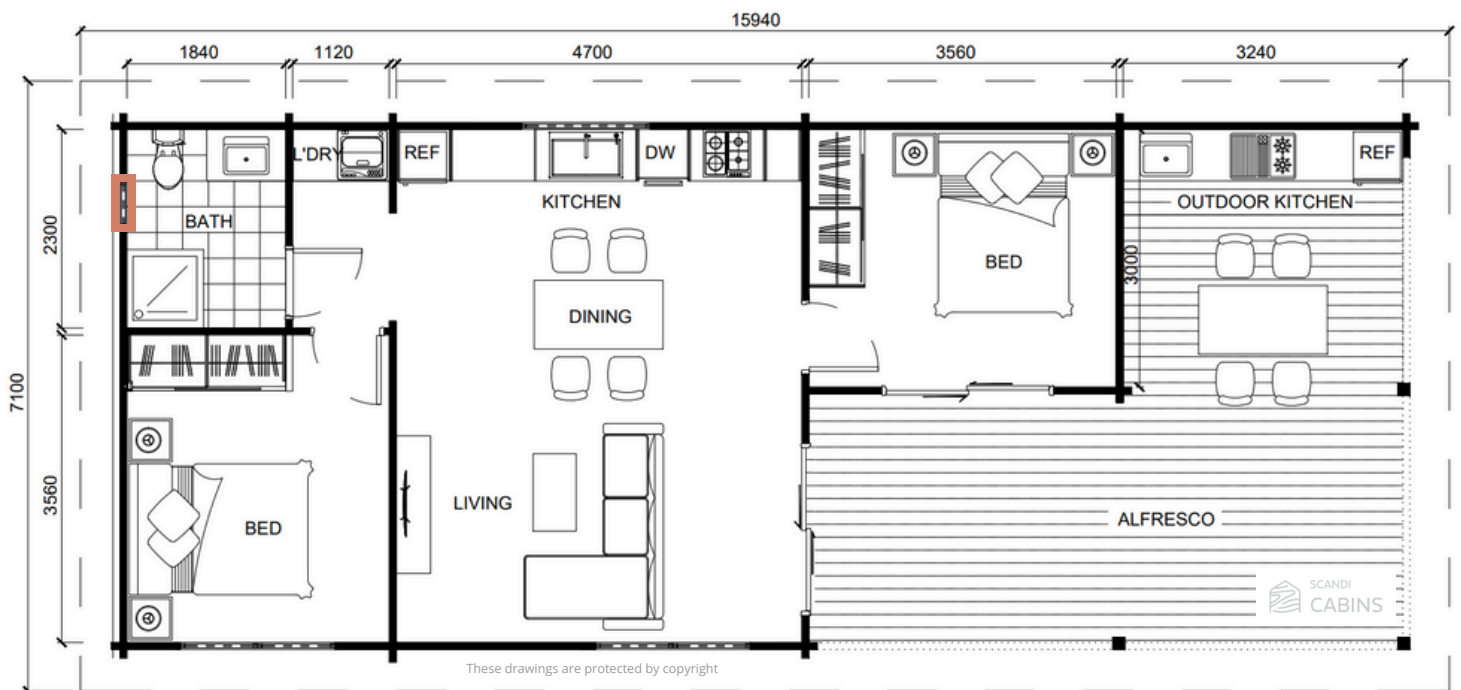



Forestmist


 2
  1
  91m²





The Forestmist 2-bedroom design is a modern and functional option, ideal for larger properties as a secondary dwelling or holiday accommodation for families or businesses. Its versatile layout allows the second bedroom to easily be transformed into a study, making it perfect for a couple who occasionally host family or friends overnight. With a low-set, wide-spanning design, it's suited for properties with ample space and scenic views. The simple shape and natural color scheme blend seamlessly with the surrounding landscape, making it an elegant and unobtrusive addition to any property.



 80 External and internal LGL wall thickness (mm) shown in this drawing

 External wall construction: 80mm LGL glulam mass timber walls plus ~120mm insulation and cladding if required

 Floor plan can be flipped, must be specified on order

 Customizable placement of windows marked red on the floor plan

Features

Forestmist



- Ample windows allow natural light
- Open-plan living
- Spacious bedrooms
- Bedrooms located on sides of the building provide privacy
- Large covered veranda for outdoor living and entertaining
- Dedicated laundry room
- Internal timber creates a cosy and healthy space
- Built on slab or raised subfloor
- Naturally insulated mass timber walls
- Double-glazed windows
- Prefab components built on-site in 6 days^

^on prepared foundation to lockup stage

Get in touch to discuss your project details, receive a rough estimate, or schedule a site inspection with one of our expert builders. Let's bring your dream backyard space to life!

START YOUR PROJECT TODAY

[CONTACT US](#)

