



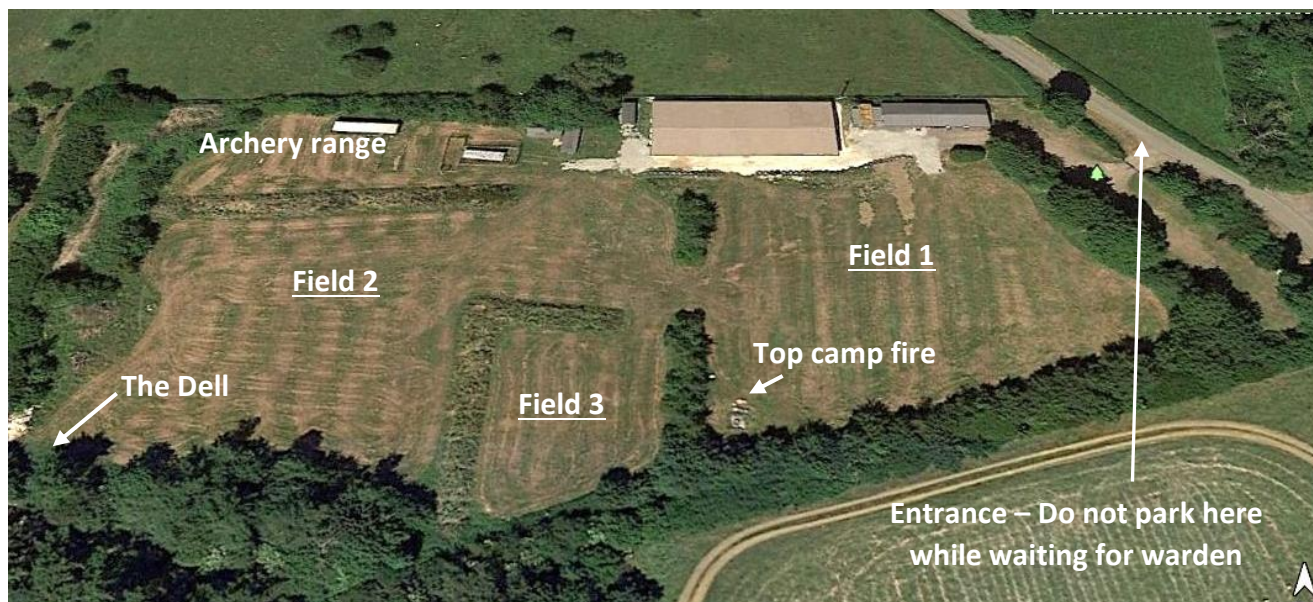
MELTON MOWBRAY & DISTRICT SCOUT COUNCIL

HOLWELL PASTURES SCOUT CAMP SITE



TERMS & CONDITIONS

For the use of Holwell Pastures Scout Camp Site



- Holwell Pastures is accessed from the relatively narrow Holwell Lane so care must be taken when approaching the site.
- Please do NOT park in front of the main gate if it is locked and you are waiting for a warden to arrive. They need to stop safely in this area to open the gate. Please use the pull in area across the road.
- Vehicles can only be driven past the inner gate for loading and unloading in agreement with the warden. Afterwards, if staying, cars must be moved back to the car park.
- Consider using a car parking warden if you have lots of vehicles dropping off and collecting people
- Vehicles are not allowed on the grass and vehicles must be driven at walking pace only at all times
- The roadway past the buildings to the climbing tower cage must be kept clear at all times to allow access for emergency vehicles and because the climbing tower is often taken off-site.
- The area adjacent to the gas tank, defined by the Armco barrier, is OUT OF BOUNDS.
- The reed bed area at the rear of the archery range in the far right corner is OUT OF BOUNDS.
- All boundary ditches are OUT OF BOUNDS
- Fires are only permitted in two areas: in the Dell in the far left corner of the second field and the Top Camp Fire in the far left corner of the first field (see picture above). **Failure to observe this rule will result in a £100 charge.**
- Wood may be used from the wood stores for fires but any not used must be returned to the store and stacked neatly and the area and fire pits must be returned to a tidy condition after use.
- Please leave alone any piles of logs not in the woodstores. They are being seasoned prior to splitting.
- **Any group using or going into the Dell must have adult supervision at all times.** Access to the Dell is by the steps/path adjacent to the large woodstore ONLY. All the steep banks are OUT OF BOUNDS.



MELTON MOWBRAY & DISTRICT SCOUT COUNCIL

HOLWELL PASTURES SCOUT CAMP SITE



- The Dell is for camp fires and backwoods cooking and the grassy areas among the trees can be used for hammock camps. Any items moved around must be returned to their original position.
- Keep off the banks planted with trees around Field 3, next to the archery range and in the car park
- Do not remove any branches or bark from any trees (alive or dead) anywhere on the site and do not climb any of the trees on the site.
- The digging of pits or removal of turf is not allowed
- The Field Kitchen next to the Martyn Turner hut can be used for food preparation and washing up. Hot water is available. Do NOT fill the sinks with food waste – scrape unwanted food off into the rubbish bin and remove the bin bag when you leave. Please leave the area clean and tidy after use.
- Do NOT use the picnic benches and tables outside Ironstone Lodge to cook on. Ensure they are cleaned after use.
- Your attention is drawn to the Fire Safety Regulations for the buildings. Emergency Procedure notices are displayed in Ironstone Lodge, the separate Ironstone Lodge toilet/shower area and the Martyn Turner Hut. You should familiarise yourselves with these.
- All rubbish **MUST** be removed from the site. There are a lot of regular bins and sanitary product bins in the rooms and toilets and field kitchen so make sure all are emptied and the duty warden informed.
- If you are using the buildings they **MUST** be cleaned before leaving the site.
- Carpeted areas are to be cleaned with the vacuum cleaners provided.
- Hard floors must be washed – hot water is available in the wet room in the toilet/shower block and floor cleaner and a mop and bucket are also located in the toilet block with others in the kitchen and the Martyn Turner hut.
- If you are not sole occupants of the site you will need to agree with other groups about cleaning of the toilet block.
- If buildings are not cleaned and/or rubbish is not removed a **£100 charge** will be added to cover the cost of cleaning and rubbish removal.
- If there is any damage to the site or equipment this will also be charged for at the total cost of replacement.

These Terms and Conditions have been drawn up to ensure you and your Group have a safe and enjoyable camp and to help us keep the site in good order for the next groups visiting. If the terms and conditions are not adhered to then we reserve the right to make a £100 charge.

Please sign at the bottom of the second page of the booking form to agree to abide by these terms. If you do not agree then we regret we will not be able to accept your booking.