



轻重钢装配式系列



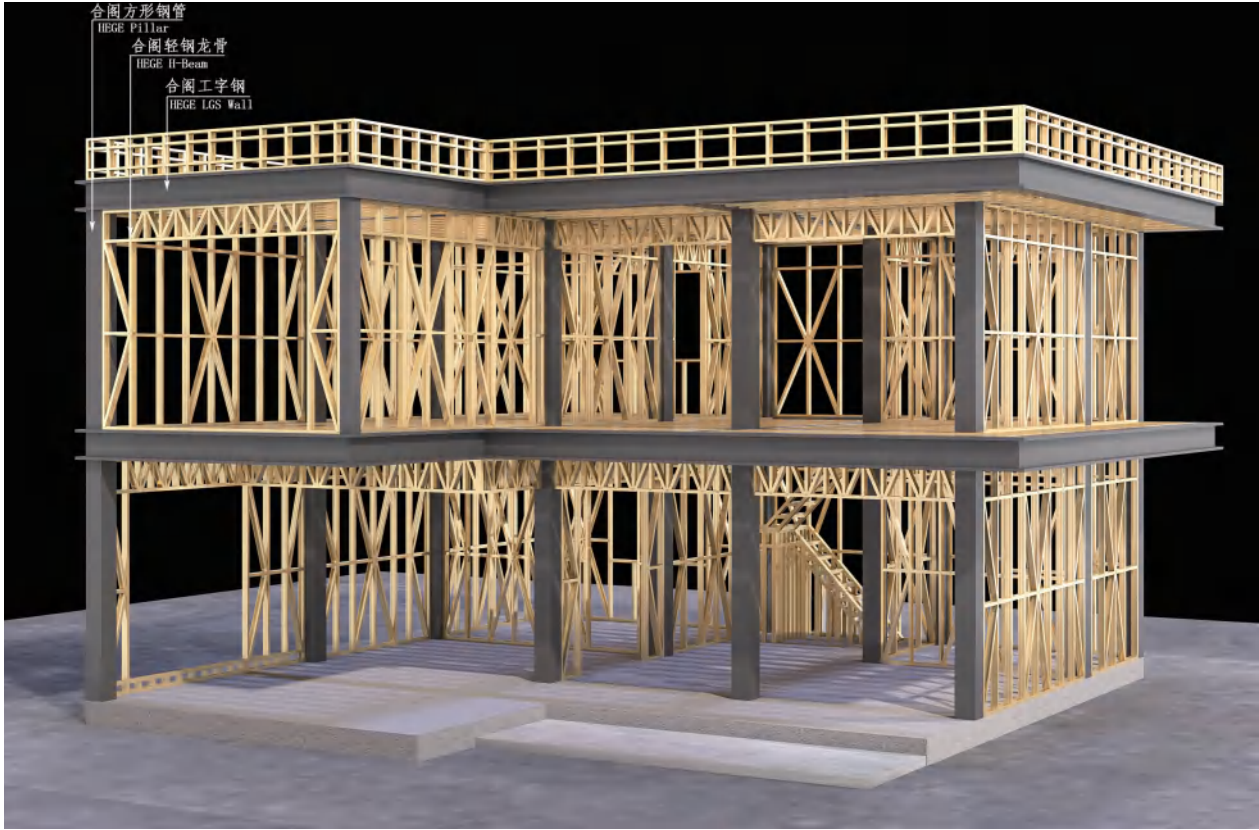


Product advantages 产品优势

■轻钢龙骨建筑

轻钢龙骨建筑在世界上的应用已有百年以上历史，已形成了物理性能优异、空间和形体灵活、易于建造、形式多样的成熟建造体系。轻钢龙骨大部分用于低层的民用建筑，包括住宅、商场、学校、办公楼等，与它配套使用的环保房屋装配体系做成的建筑物具有抗震性、耐久性、隔音性、保温隔热、防潮等优良性能。

Light steel keel buildings have been used in the world for more than 100 years, and have formed a mature construction system with excellent physical performance, flexible space and shape, easy construction and various forms. Most of the light steel keel is used in Low-Rise civil buildings, including residential buildings, shopping malls, schools, office buildings, etc. the buildings made of the environmental protection housing assembly system used with it have excellent properties such as earthquake resistance, durability, sound insulation, thermal insulation, moisture-proof and so on.



■问:钢材是否耐腐蚀？

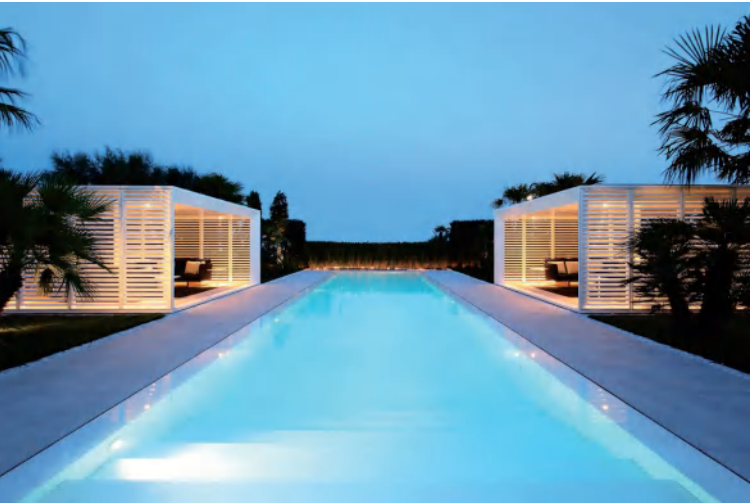
答：我们的钢材采用的是热镀锌涂层的550MPa高强度钢材，防腐镀锌涂层用来保护结构终生不受腐蚀。使用寿命可超过100年，但是建议不要在强酸、强碱的环境下建筑房屋。

Ask:is steel corrosion resistant?
Answer:We used for steel are hot-dip galvanized coating 550MPa high-strength steel,anti-corrosion aluminium zinc coating to protect the structure lifetime from corrosin.Life can be more than 50 years,but do not recommend building in acid and alkali environment of housing.

■问：楼板和楼梯是否牢固？

答：在结构上，我们采用桁架梁结构来增强楼板和楼梯的坚固度，在施工上，我们并用OSB板来加强楼板和楼梯的坚固度，所有楼板和楼梯是很坚固的。

Ask:Are floors and stairs firm?
Answer:In the structure,we use the truss beam structure to enhance the strength of the floor board and the stairs of the firmness,in the construction,we use OSB board to strengthen the floor board and the firmness of the stairs.So the floor deck and the stairs are solid.

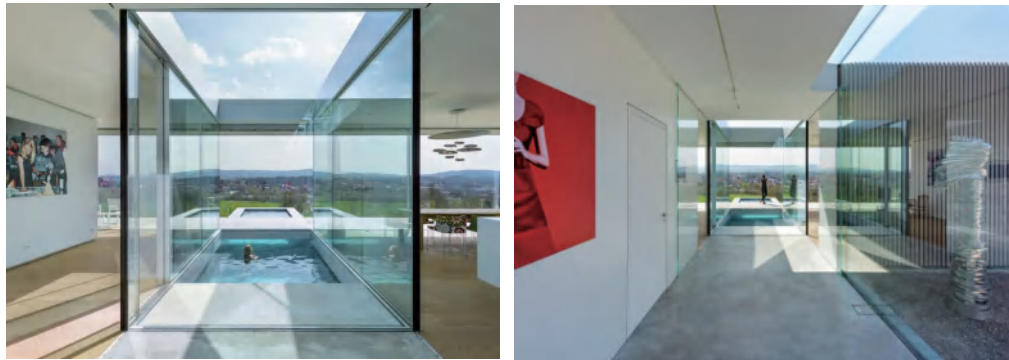




HGPH1-012单层泳池别墅

■ 轻钢龙骨结构建筑,化繁为简!性能改革大跃进!

轻钢龙骨结构低层建筑的建造技术是在北美式样木结构建造技术的基础上演变而来的，经过百年以上的发展，已形成了物理性能优异、空间和形体灵活、易于建造、形式多样的成熟建造体系。在世界上被誉为人居环境最好的北美大陆，有很大一部分的低层民用建筑，包括住宅、商场、学校、办公楼等均使用轻型木结构或轻钢结构建造（甚至包括我们的近邻日本和韩国）。北美轻型木结构和轻钢结构在整个建筑市场占有绝对优势。近年来，随着环保意识的加强，轻钢结构建筑的市场正以超过30%的增长率快速增长，逐步被市场所广泛接受，这是世界建筑发展的必然趋势。



Light steel structure of low-rise residential building technology is on the basis of the north American style wood construction technology excellent physical performance, flexible space and shape that is easy to build various forms of mature construction system. Best in the world is known as the living environment of the north American continent. A large part of the low-level civil buildings, including residence, shopping malls, schools, office buildings and other wood or ultra light use light steel structure building (even our neighbors Japan and South Korea). North American light wood structure and ultra light steel structure in the whole construction market holds an absolute advantage. In recent years, with rising prices of wood, north American super light steel structure system of the market development is rapid growth rate of more than 30% of growth, gradually widely accepted by the market. At the same time, in our neighbor Japan (become KC system in Japan) and South Korea, and Australia etc other developed countries has also been a large number of adoption.



■ 问:轻钢龙骨房屋的使用寿命

答：轻钢龙骨房屋的使用年限参考低层住宅冷弯薄壁型钢结构地方标准GB50018-2002规定的100年以上。

Ask:What is the life span of the light steel house?
Answer:The life span of the light steel house is more than 100 years,what refer to the lower house of cold-formed steel structure of the local standards set by the GB0018-2002.



Product advantages 产品优势

■ 轻钢龙骨房屋

轻钢龙骨住宅采用干施工，因此噪声污染、粉尘污染、水污染极低。施工时大大减少了砂石、灰的用量，所用材，主要是绿色100%回收或降解的材料，在建筑物拆除时，基本不会对土地造成任何污染。

The light steel keel residence adopts dry construction, so the noise pollution, dust pollution and water pollution are very low. During construction, the amount of sand, stone and ash is greatly reduced. The materials used are mainly green 100% recycled or degraded materials, which will basically not cause any pollution to the land when the buildings are demolished.



HGPH2-036 双层悬挑式泳池别墅



■ 抗震性

对于承重结构体系采用镀锌锌的轻钢龙骨来说就是一种很大的革新，这种结构体系有着更好的抗震、防腐、防虫、环保和节能效果。因为轻钢结构装配式工业化低层建筑自重轻，金属材料属性以及必须的剪力墙结构形式决定了轻钢结构系统天生的抗震性能。由于地震的活动为左右和上下活动，所以用紧固件连在一起的轻钢结构组成了一个安全稳定的盒子，不会因为地震的摇晃而出现墙体倒塌或楼板掉下危及人身安全。而砖混建筑抗震性能差是大多数人公认的，四川地震已经是一个很好的例证。混凝土建筑要做到同等抗震性能需要付出更高的结构材料成本，相反还会提高整体建筑成本，同时也会增加施工难度和设计难度。

■ EARTHQUAKE RESISTANCE

For load-bearing structural system using galvanized light steel keel, it is a kind of great innovation, this architecture has a better seismic, anti-corrosion, insect-resistant, environmental protection and energy efficiency. Because the ultra-light steel structure prefabricated low-rise industrial buildings, light weight, and the material properties of the metal in the form of shear wall structure must determine the ultra-light steel structure system born seismic performance. Due to earthquake activity for the left and right and up and down, so use fasteners of lightweight steel structure formed a box, security and stability but will not appear because of the earthquake shaking collapsed wall or floor off the endanger personal safety. The brick building seismic performance difference is recognized by most people and the Sichuan (one of the provinces in China) earthquake has been a very good example. Seismic performance of concrete structures to do the same takes the structure of the higher cost of materials, on the contrary it will improve the overall cost of construction, construction difficulty and the design difficulty will be increased.



■ 耐久性

轻钢龙骨结构住宅结构偶全部采用冷弯薄壁钢构件体系组成，钢骨采用超级防腐高强冷轧镀锌板制造，有效避免钢板在施工和使用过程中的锈蚀的影响，增加了轻钢构件的使用寿命，结构寿命可达50-70年。

■ Durability

Light gauge steel structure is made of cold-formed thin-walled steel. The frame is cold-formed galvanized and aluminum-coated steel sheet, which is of great corrosion resistant ability, reducing the possibility of corrosion caused during construction, and increasing the life of steel frame. The life span can be 50 to 70 years.

■ 保温隔热

采用的保温隔热材料以玻纤棉及岩棉为主，具有良好的保温隔热效果。用在外墙的保温板，有效的避免墙体的“冷桥”现象，达到了更好的保温效果。90mm左右厚的R15保温棉热阻值个相当于1m厚的砖墙。

■ Heat insulation

Light gauge steel structure applies glass wool and rock wool as insulated material to achieve satisfactory heat maintaining and heat resisting performance, The exterior wall panel is heat insulated so it can protect the wall from "frozen" and realize better insulation. The thermal resistance of R15 insulated wool is equal to that of 1m thick brick wall.



■ 抗风性

轻钢龙骨结构建筑重量轻、强度高、整体刚性好、变形能力强。建筑物自重仅是砖混结构的五分之一，可抵抗每秒50-70米飓风，使生命财产能得到有效的保护。

■ Wind resistance

Light steel keel structure has the advantages of light weight, high strength, good overall rigidity and strong deformation capacity. The self weight of the building is only one fifth of that of the brick concrete structure, which can resist hurricanes of 50-70 meters per second, so that life and property can be effectively protected.



■ 隔音性

隔音效果是评估住宅的一个重要指标，轻钢体系安装的窗均采用中空玻璃，隔音效果好，隔音达40分贝以上；由轻钢龙骨、保温材料石膏板组成的墙体，其隔音效果可高达60分贝。

■ Sound insulation

It is important for the house to have good sound insulation. So the window we use in our light gauge steel structure is of hollow glass, with the sound insulation of 40 decibels. Meanwhile, the wall that made of light gauge steel structure and insulated plasterboard has sound insulation of 60 decibels.





Product advantages 产品优势

■ 问：轻钢龙骨房屋的使用寿命？
答：轻钢龙骨房屋的使用年限参考低层住宅冷弯薄壁型钢结构地方标准GB50018-2002规定的100年以上。

■ Ask:What is the life span of the light steel house?
Answer: The life span of the light steel house is more than 50 years, what refer to the lower house of cold-formed steel structure of the local standards set by the Gb50018-2002.

Product advantages 产品优势

HG-E744 单层泳池别墅

装配式建筑主要分为混凝土结构、钢结构和木结构三种结构类型，其实际占比有很大差距。2020年以来的数据显示，新开工装配式钢结构建筑占比近40%，一直以上升趋势发展。

装配式钢结构特点:

主要构件:
钢构件预制楼板、外墙板、钢框架柱、钢梁等

材料环保性:
较强，大部分构件拆卸后可回收利用

一体化程度:
较高，能够进行三位模块化设计，集建筑结构、装修一体化设计和工厂化生产

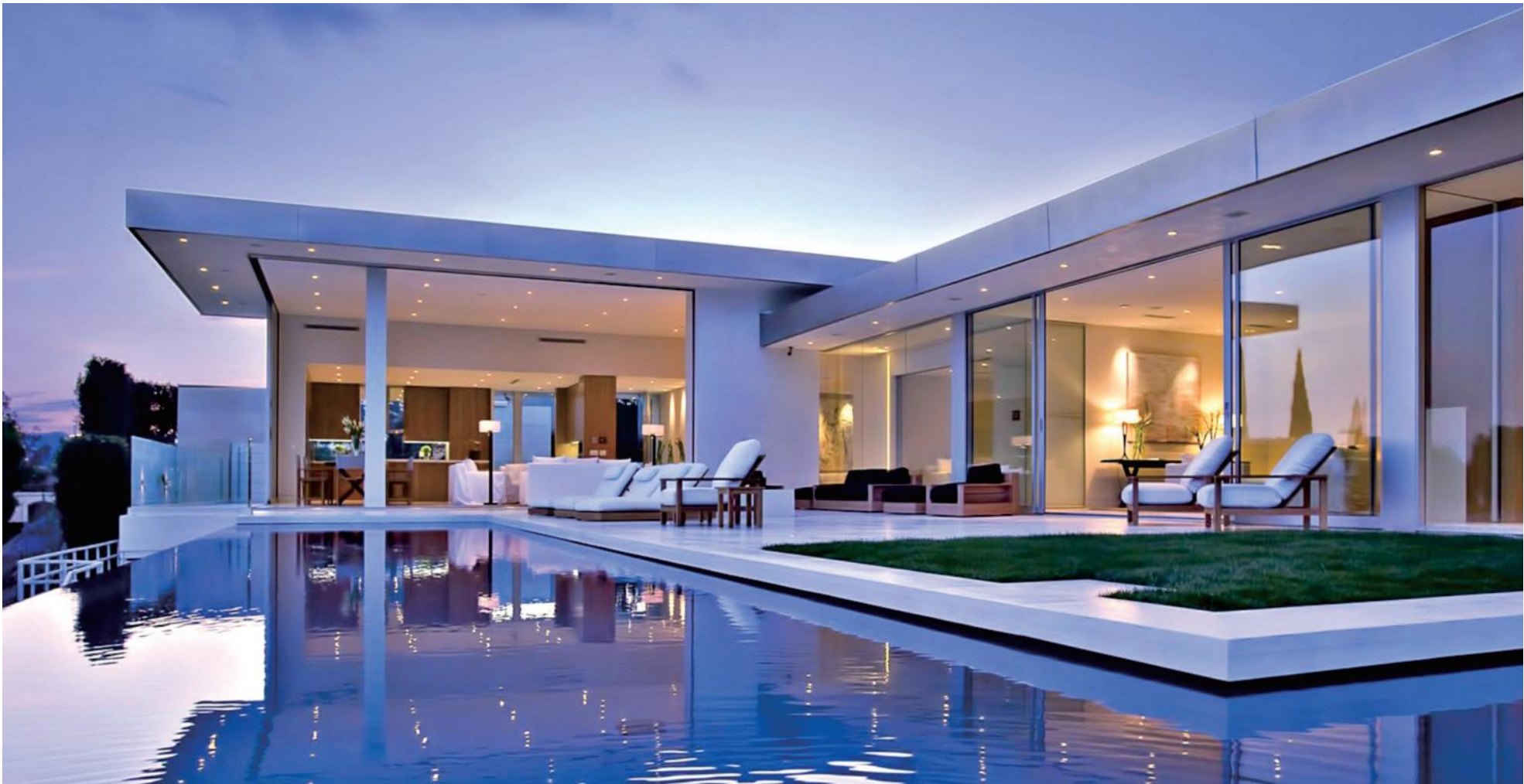
适用: 所有的建筑都适用

现场湿作业量:
构件轻，基本靠螺栓或其他金属配件作机械性连接，湿作业量少

成本:
材料成本较高，但构件和模块重量轻，运输和吊装成本低

现场施工安装的便利性:
较便利，大部分连接节点及缝隙连接偏向柔性，不易产生裂缝，后期若产生部分裂缝，较好维修

Fabricated steel structure: Main components: prefabricated floor slabs of steel components, exterior wall panels, steel frame columns, steel beams, etc. site wet work volume; the components are light, and the mechanical connection is basically made by bolts or other metal accessories, with less wet work volume Environmental protection of materials: strong, most components can be recycled after disassembly Cost: the material cost is high, but the components and modules are light and the transportation and industrialized production Convenience of on-site construction and installation: it is more convenient. Most of the connecting modes and gap connections are flexible, which is not easy to produce cracks. If some cracks occur in the later stage, it is better to repair. Applicable : applicable to almost all buildings.



HGPH1-013 对角别墅

该别墅由三个独立的结构组成，正房，招待所和独立车库。这些建筑的朝向设计使户外的空间最大化，连接自然和人工因素。

内部和外部空间向外延伸到周围的连绵起伏的丘陵景观。设计模糊了内部和外部之间的界线。全玻璃幕墙和宽敞的大平台加强了人对当地景观的体验。

主题体量和客用体量与美景并置，并提供了对于整个景观观看的视角。自然与人工彼此镜像，这两个结构变化而又相互联系。

The villa consists of three independent structures, the main house, guest house and independent garage. The orientation design of these buildings maximizes the outdoor space and connects natural and artificial factors. The interior and exterior spaces extend outward to the surrounding rolling hilly landscape. The design blurs the boundary between interior and exterior. The full glass curtain wall and spacious platform enhance people's experience of the local landscape. The theme volume and guest volume are juxtaposed with the beauty, and provide a perspective on the whole landscape. Nature and man mirror each other, and these two structural changes are interrelated.



PROJECT CASE 工程案例

问:钢材是否耐腐蚀？

答：我们的钢材采用的是热镀锌锌涂层的550MPa高强度钢材，防腐镀铝锌涂层来保护结构终生不受腐蚀。使用寿命可超过100年，但是建议不要在强酸、强碱的环境下建筑房屋。

Ask:is steel corrosion resistant?

Answer:We used for steel are hot-dip galvanized coating 550MPa high-strength steel ,anti-corrosion aluminium zinc coating to protect the structure lifetime from corrosin. Life can be more than 50 years,but do not recommend building in acid and alkali environment of housing.





HGPH1-024 双层泳池别墅



- 轻钢龙骨集成房屋的外墙材料搭配灵活，不同的外观及功能需要，可以搭配不同的材料，如：木纹板、水泥纤维板金属雕花板、PVC板等，都是目前常用的外墙挂板材料。
钢构龙骨住宅采用干施工，因此噪声污染、粉尘污染、水污染极低。施工时大大减少了砂石、灰的用量，所用材料，主要是绿色100%回收或降解的材料，在建筑物拆除时，基本不会对土地造成任何污染。

- Light gauge steel-framed residential can be decorated by different external wall materials. And different materials will be used according to different demands of appearance and function. Such external wall materials as wood grain board, fiber cement board, metal carving plate and PVC cladding are in common use. Steel-framed residential construction uses dry excavation technology, so that such pollution as noise pollution as noise pollution, dust pollution and water pollution is low. What's more, sand, gravel and lime are reduced in construction and main materials which can be reclaimed and degraded are 100% green, so land will not be polluted in demolition of a steel-structured building.

■ 问：楼板和楼梯是否牢固？

答：在结构上，我们采用桁架梁结构来增强楼板和楼梯的坚固度，在施工上，我们并用OSB板来加强楼板和楼梯的坚固度，所以楼板和楼梯是很牢固的。

Ask:Are floors and stairs firm?

Answer:In the structure,we use the truss beam structure to enhance the strength of the floor board and the stairs of the firmness,in the construction,we use OSB board to strengthen the floor board and the firmness of the stairs. So the floor deck and the stairs are solid.



PROJECT CASE
工程案例



■ 问：轻钢龙骨防潮怎么处理？

答：我们这边的防潮措施是在墙面铺上了一层单向防潮呼吸纸。能排除房屋的水气,同时也能阻隔外界的水气。

Ask:How to deal with the moisture for light steel housing?

Answer:Moisture proof measures,a layer of one-way moisture in the wall paper.What can rule out the house water vapor,at the same time also can block outside the water vapor.





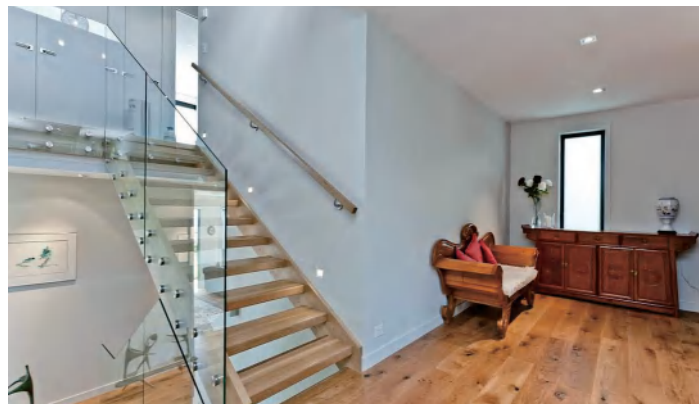
PROJECT CASE 工程案例

■ 问：轻钢龙骨防潮怎么处理？

答：我们这边的防潮措施是在墙面铺上了一层单向防潮呼吸纸。能排除房屋的水汽，同时也能阻隔外界的水汽。

■ Ask:How to deal with the moisture for light steel housing?

Answer: Moisture proof measures, a layer of one-way moisture in the wall paper. What can rule out the house water vapor, at the same time also can block outside the water vapor.





HGPH3-003 新概念装配式住宅



■ 根据房屋的高度宽度，计算出每个节点的承重需要，选择采用标准化的重钢或轻钢。

■ According to height and width of the house, the bearing needs of each node are calculated, and standardized heavy steel or light steel is selected.



HGST-63装配式度假房屋

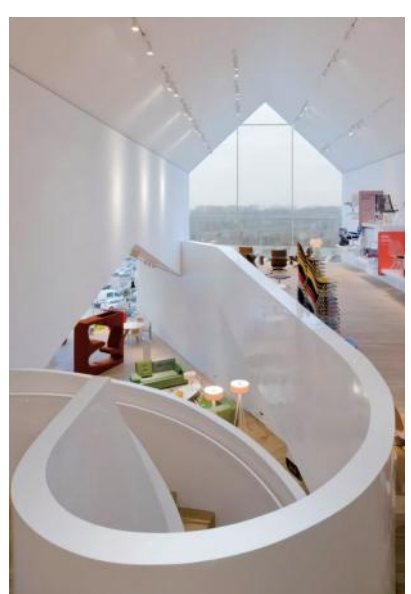
■ 这别墅是用重钢+轻钢结构，装配上环保墙面材料，它环保、抗震、抗风、寿命长，加上防腐保护层在无酸无碱的环境下能存百年以上。

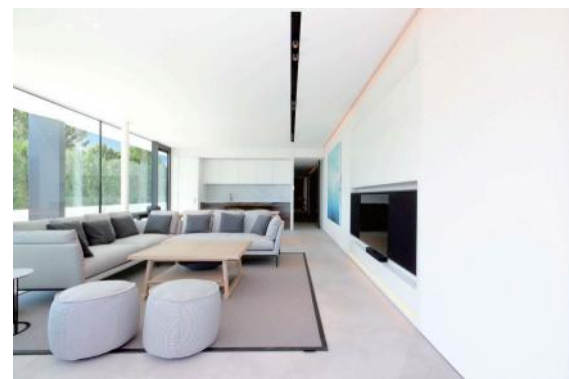
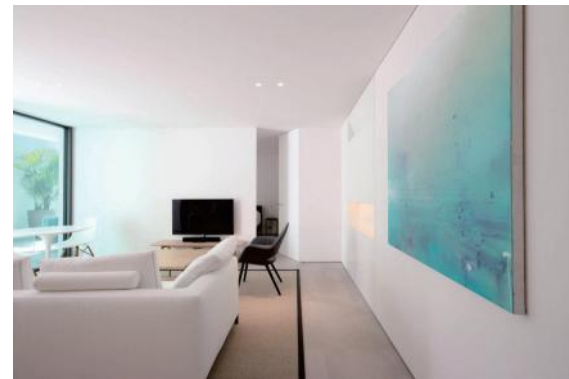
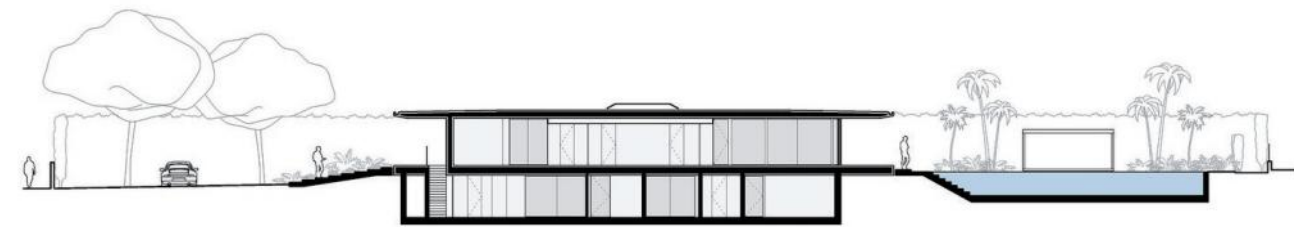
■ The villa is made of heavy steel + light steel structure and equipped with environmental friendly wall materials. It is environmentally friendly, earthquake resistant, wind resistant and has a long service life. With the anti-corrosion protective layer, it can survive for more than 100 years in an acid and alkali free environment.





HGPH1-029现代半坡别墅



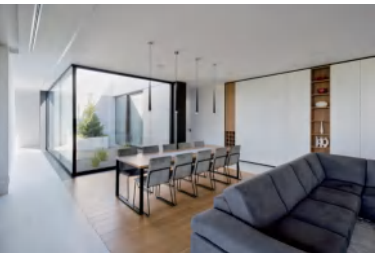


HGPH1-002 泳池别墅



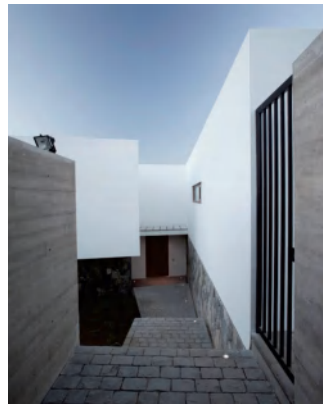
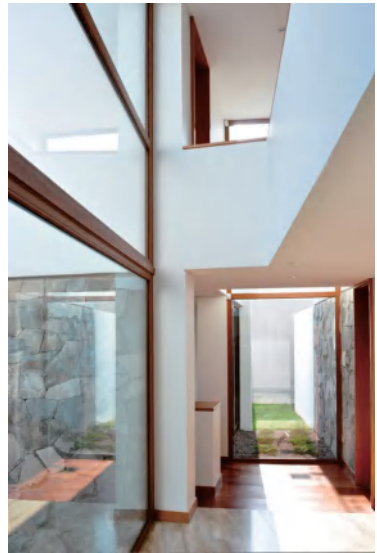


HGPH1-048 单层房屋



HGPH2-052 双层别墅

- 问:轻钢龙骨防水怎么处理?
- 答: 防水问题在集成化房屋上是没有问题的, 我们的防水措施: 屋顶有落水件, 屋面有屋面防水油毡。
- Ask:How to deal with the waterproof for the light steel housing?
- Answer: The waterproof problems for integrated housing is not a problem, our waterproof measures: the rooftop with Drainage accessories, the roof has roofing shingles.





HGPH1-003 双层绿色节能别墅

Heavy steel + light steel keel Villa



Heavy steel + light steel keel Villa

HGPH2-056 双层泳池别墅



■ 问：钢材是否耐腐蚀？
答：我们的钢材采用的是热镀锌涂层的550MPa高强度钢材，用防腐镀锌涂层来保护结构终生不受腐蚀。使用寿命可超过100年，但是建议不要在强酸、强碱的环境下建筑房屋。

■ Ask: Is steel corrosion resistant?
Answer: We used for steel are hot-dip galvanized coating 550MPa high-strength steel, anti-corrosion aluminium zinc coating to protect the structure lifetime from corrosion. Life can be more than 50 years, but do not recommend building in acid and alkali environment of housing.





HGPH1-015 现代黑色风格别墅





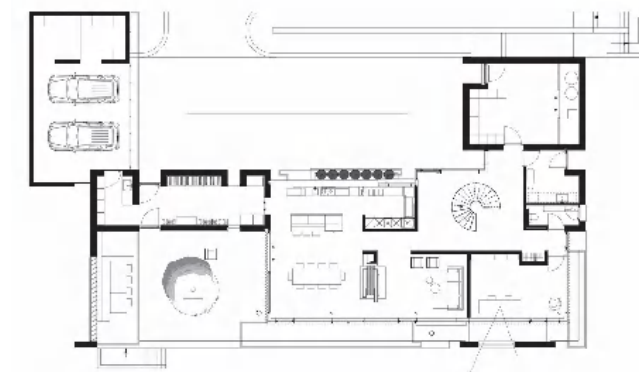
HGPH3-009新式三层悬挑别墅

Cantilevered Villa



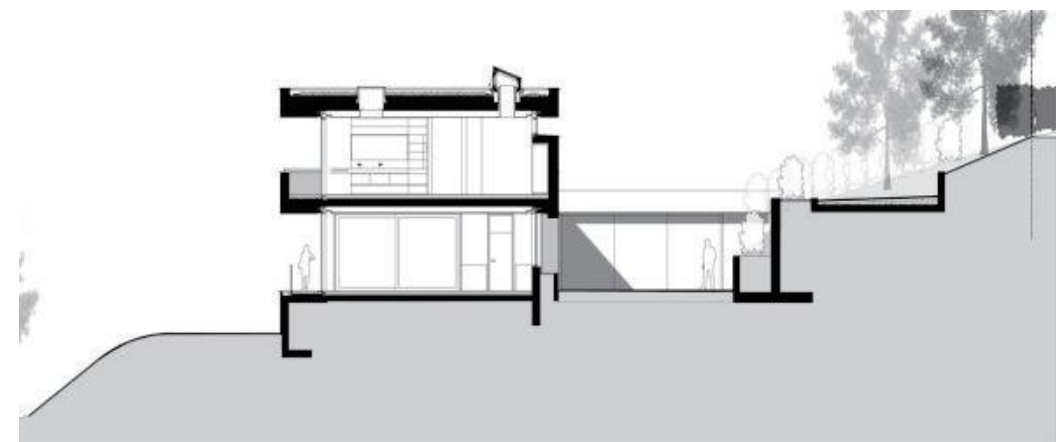


HGPH2-003 预制化双层白色别墅



PROJECT CASE

工程案例





HGPH2-010 双层现代化别墅

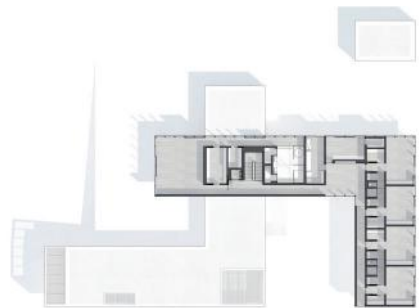
HGPH2-005 双层现代化别墅





HGM2-019现代悬挑酒店

*Modern cantilevered
Hotel*



HGPH2-013现代悬挑酒店

■ 设计理念 *Design concept*

这是一个钢结构为主，辅以玻璃纤维及防水隔热材料制造墙体。钢结构能轻松建造出各种艺术造型。当你来到入口的那一刻，你感觉可以直穿主空间，坐拥大海。



This is a steel structure, supplemented by glass fiber and waterproof and thermal insulation materials to make the wall. Steel structure can easily build all kinds of artistic shapes. When you come to the entrance, you feel you can go straight through the main space and sit on the sea.





HGPH2-006 双层悬挑别墅

*Two storey
cantilevered Villa*

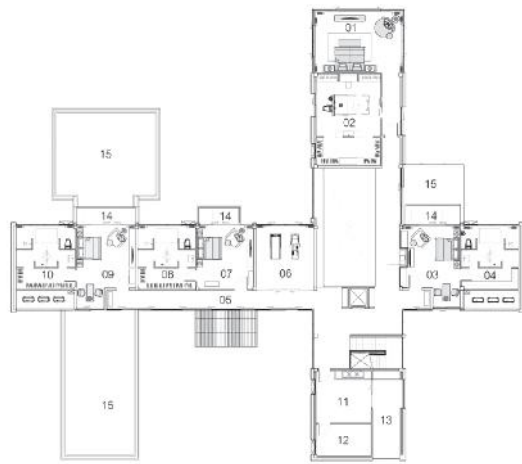


HGPH2-006 双层悬挑别墅

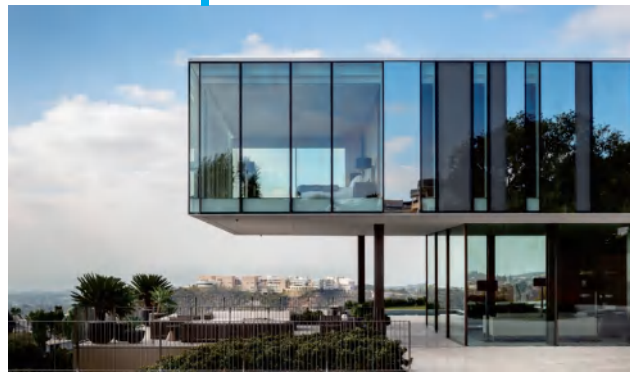
*Two storey
cantilevered Villa*



- 01 MASTER BEDROOM
- 02 WALK IN CLOSET
- 03 BEDROOM 1
- 04 WALK IN CLOSET 1
- 05 CORRIDOR
- 06 FITNESS
- 07 BEDROOM 2
- 08 WALK IN CLOSET 2
- 09 BEDROOM 3
- 10 WALK IN CLOSET 3
- 11 WASHING AREA
- 12 STORAGE
- 13 SKYLIGHT
- 14 TERRACE
- 15 ROOF

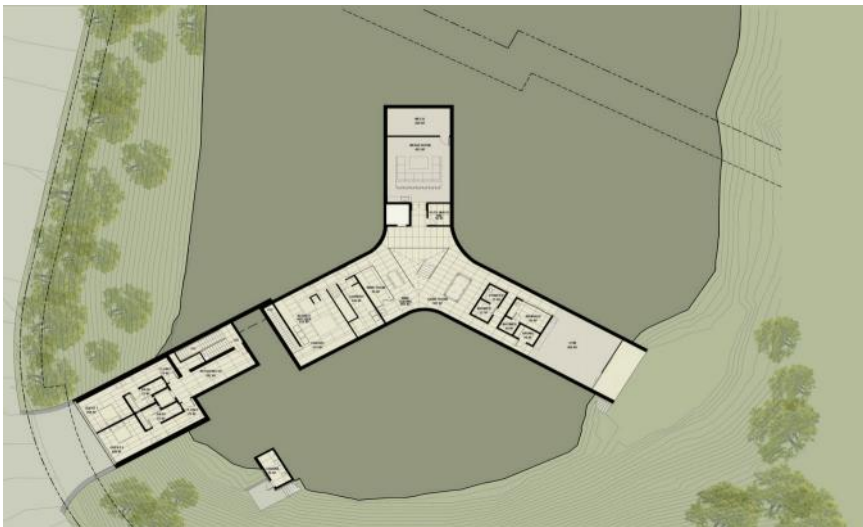


SECOND FLOOR PLAN
NOT TO SCALE



HGM2-014现代悬挑酒店

Modern cantilevered Hotel





HGPH2-032 双层泳池别墅

Double deck Pool Villa

PROJECT CASE

5501ECL CV2E

工程案例

工结零创



HGHV-004 大型半坡别墅





HGM1-022 大型坡顶别墅



HGM1-022-坡顶别墅





HGPH2-080 海边别墅

PROJECT CASE

工程案例

Innovative Villa

HGPH1-041 创新造型别墅





HG-V35 美式别墅系列

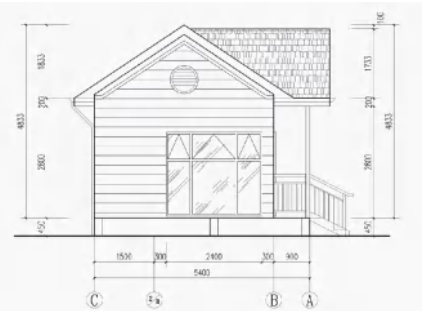
HG-V52 美式别墅系列



Interior layout
室内布局参考



正立面图
Front Elevation



左立面图
Left Elevation



背立面图
Back Elevation



右立面图
Right Elevation





PROJECT CASE
工程案例

HG-V54 美式别墅系列



HG-V53 美式别墅系列





HG-V55 美式别墅系列



HG-V56 美式别墅系列





美式别墅度假村

PROJECT
Cases 工程案例





新中式别墅

PROJECT CASE
工程案例



PROJECT CASE
工程案例

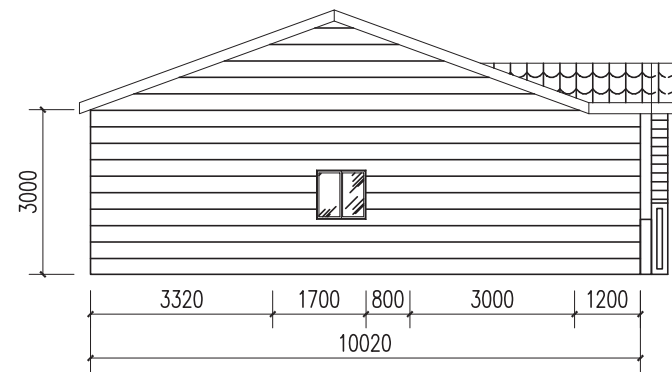
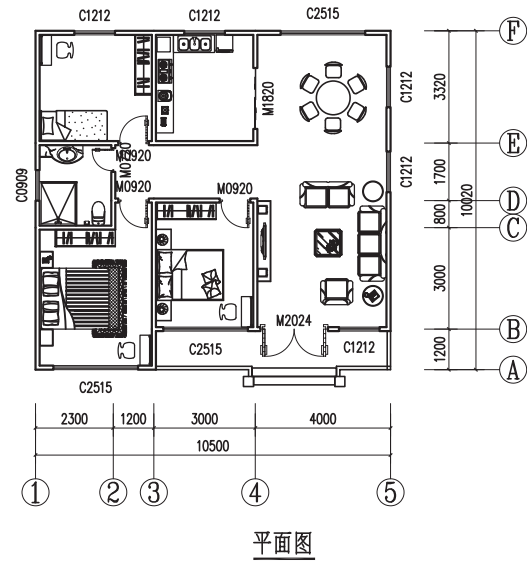
新中式别墅

户型:三室一厅一卫

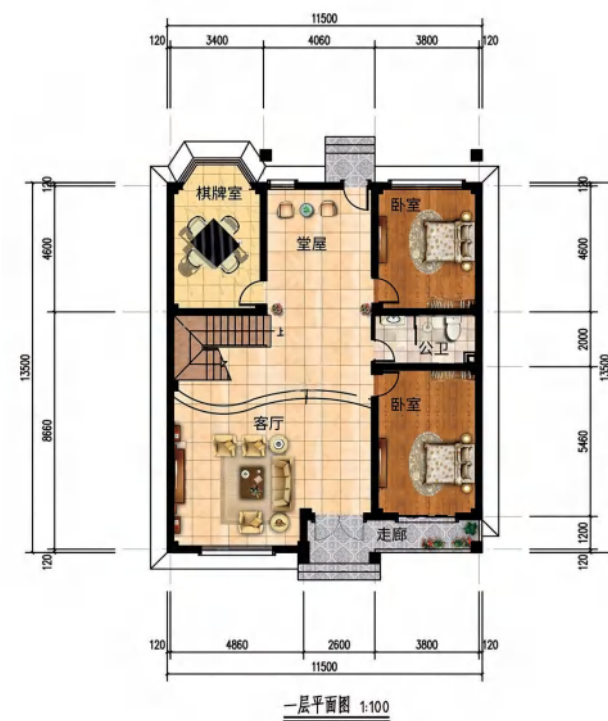
占地面积:105.21平方米

建筑面积 : 105 m²

开间10.5米, 进深10.02米



左立面图



N-Z005 新中式2层别墅

户型:四室一厅一卫

占地面积: 157.32平方米

建筑面积: 315.03平方米

开间11.5米, 进深13.5米

建筑高度: 11.116米

主材料: 轻钢龙骨



N-Z017 新中式3层别墅

户型：六室三厅五卫

建筑面积：494 m²

占地面积：172 m²

开间13.8米、进深13.04米

建筑层高：一层3.2m 二三层2.8m

主材料：轻钢龙骨



N-Z004 新中式2层别墅

户型：五室两厅两卫

建筑面积：265 m²

占地面积：136.5 m²

建筑层高：一层3.2m 二层2.8m

主材料：轻钢龙骨



左立面图



正立面图



右立面图





PROJECT CASE
工程案例



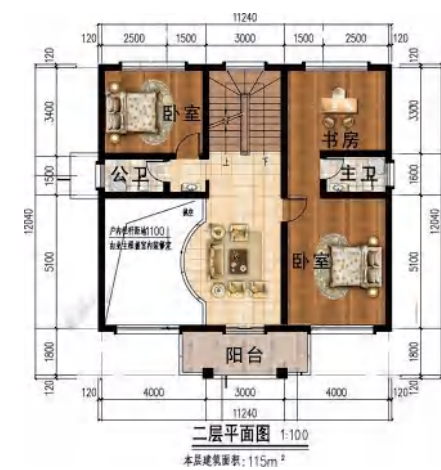
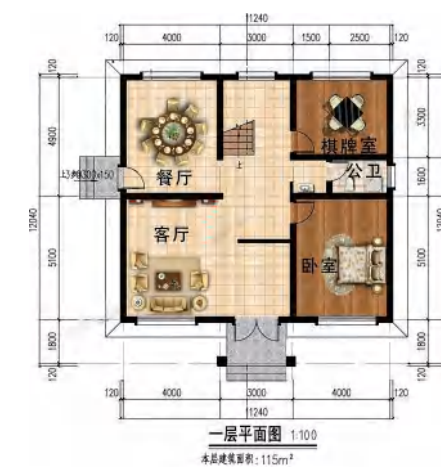
徽派别墅



徽派风格别墅

以重钢+轻钢结构为主的徽派风格别墅，梁架多用料硕大，且注重装饰的建筑，钢结构的可塑性和其耐用、抗震、抗风、环保等优点逐渐突显，人们也大量应用钢结构建筑房屋。对于造型艺术高的徽派建筑，钢结构装配式建筑同样可以达到甚至超过传统用材的优点。

For buildings with heavy steel + light steel structure, multi-purpose beam frames, huge materials and emphasis on decoration, the plasticity of steel structure and its advantages of durability, earthquake resistance, wind resistance and environmental protection are gradually used. For Hui style buildings with high plastic arts, steel structure prefabricated buildings can also achieve or even exceed the advantages of traditional materials.



HGWP-W001 徽派别墅

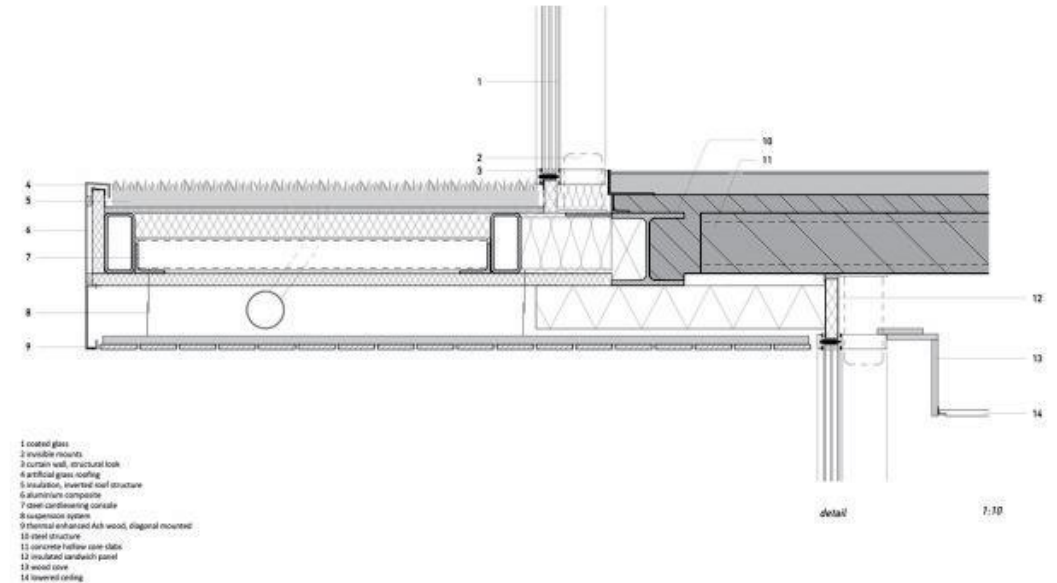
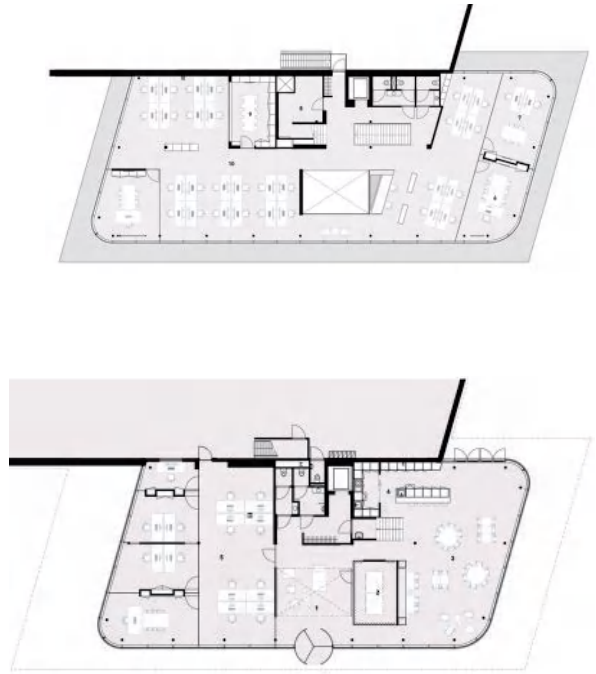
HGWP-W002 徽派别墅

HGST-004 现代化大型办公楼

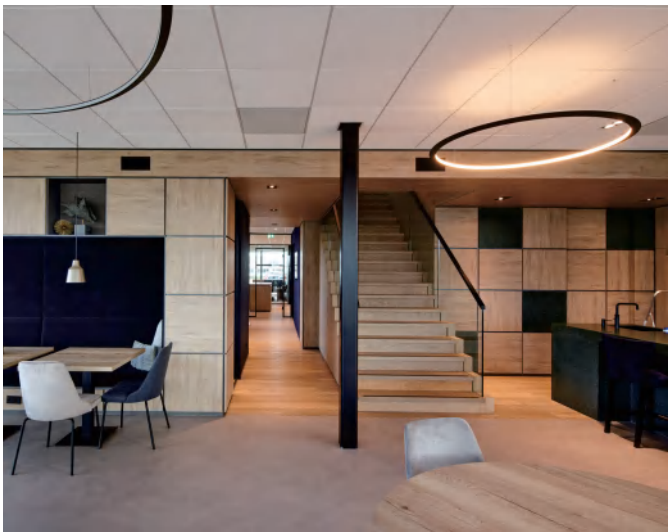
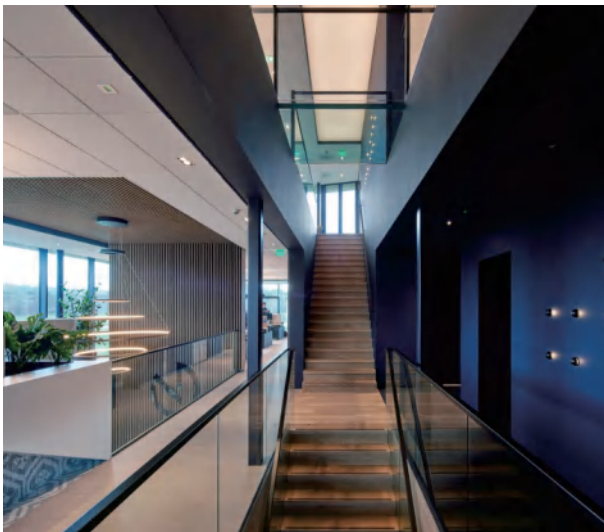
Modern large office building



轻钢大型商业综合楼
Light and heavy steel large
commercial complex building

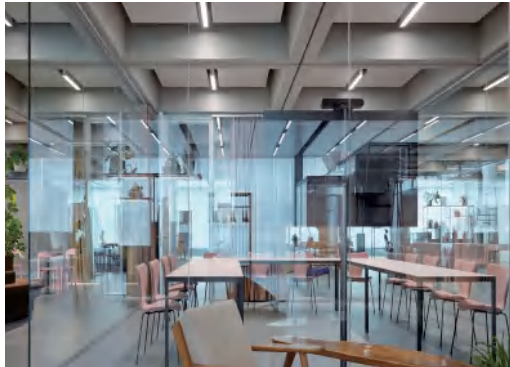


- 1 curtain glass
- 2 movable module
- 3 curtain wall, structural look
- 4 artificial glass coating
- 5 insulation, inverted roof structure
- 6 aluminum composite
- 7 steel reinforcing concrete
- 8 aluminum system
- 9 thermal enhanced Ash wood, diagonal mounted
- 10 steel structure
- 11 concrete hollow core slab
- 12 insulated sandwich panel
- 13 wood cover
- 14 lowered ceiling





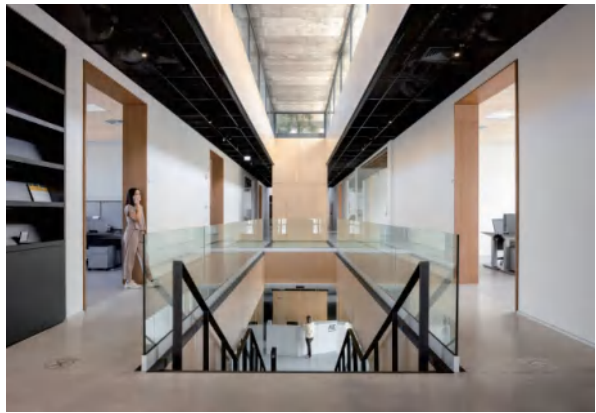
HGST-002 大型现代办公楼



Modern large office building

HGST-014 现代化大型办公楼





HGST-009 大型办公楼

Modern large office building

PROJECT
Cases

工程案例

HGST-075 展厅

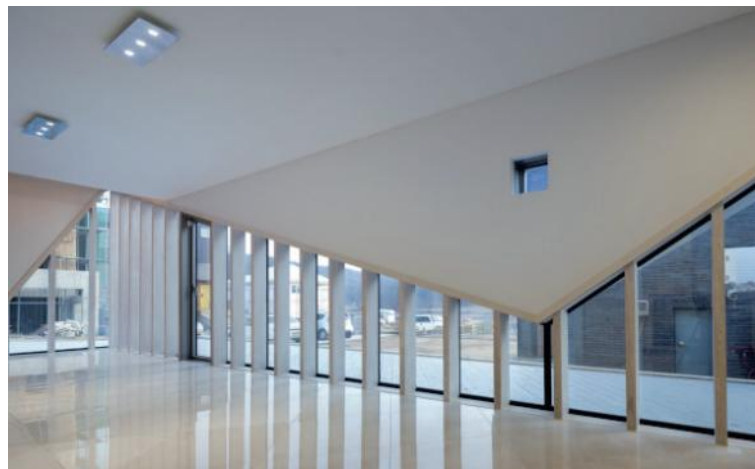
Exhibition hall





HGST-078 展厅

Exhibition hall

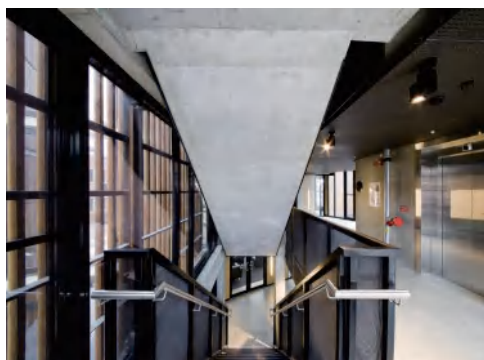
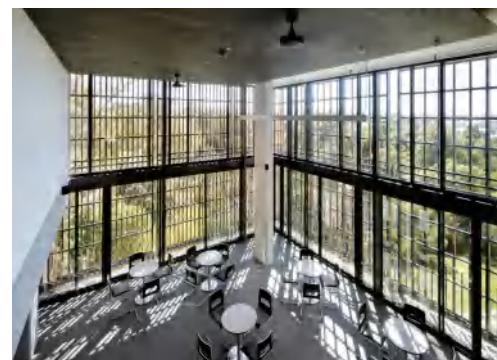
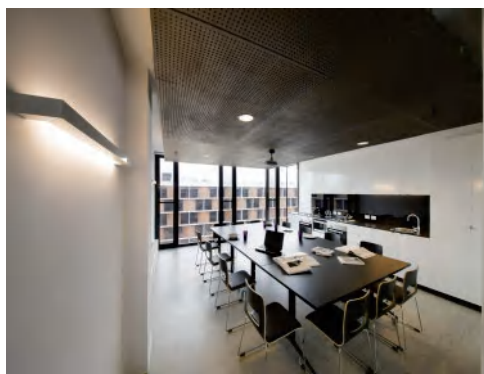
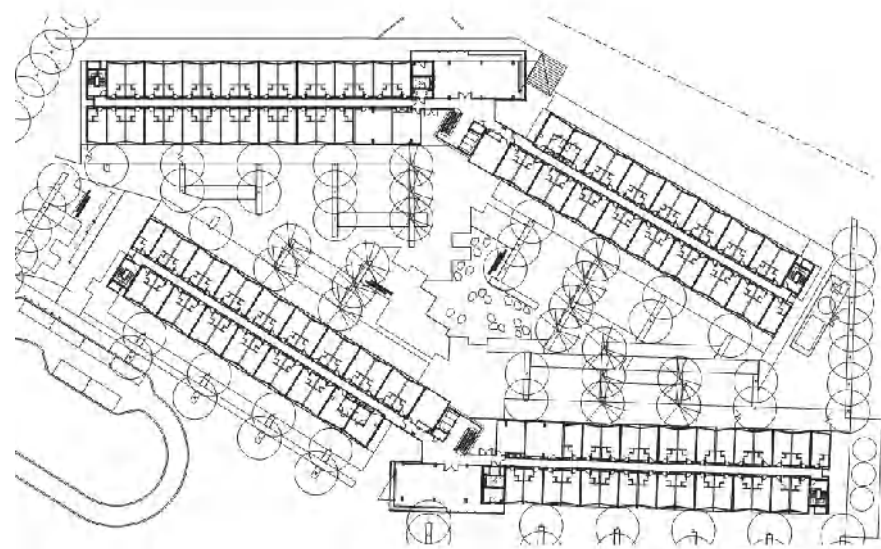


HGST-076 展厅





HGHV-005 大型公寓 *Large apartment*



HGST-005 大型商贸中心

Large trade center



PROJECT CASE

工程案例





HGST-065 大型办公楼

Modern large office building



HGST-038 创新中心

Large Innovation Center

PROJECT CASE

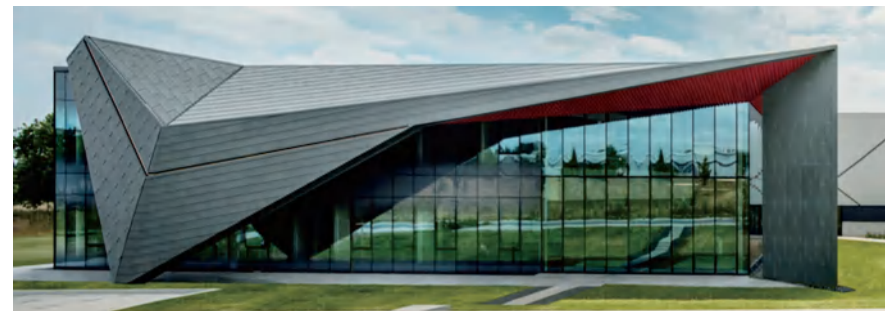
工程案例





HGST-019 大型健康中心

Large health center





HGST-007 轻重钢学校

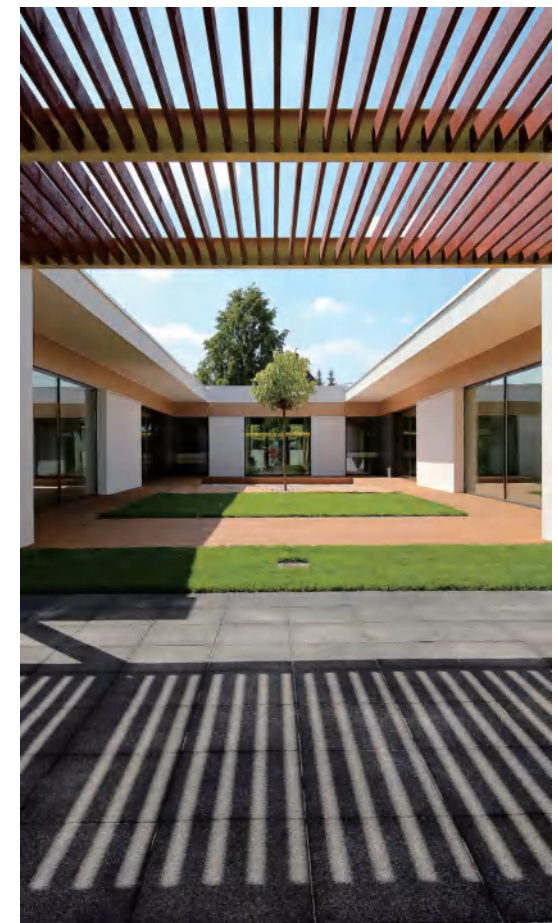
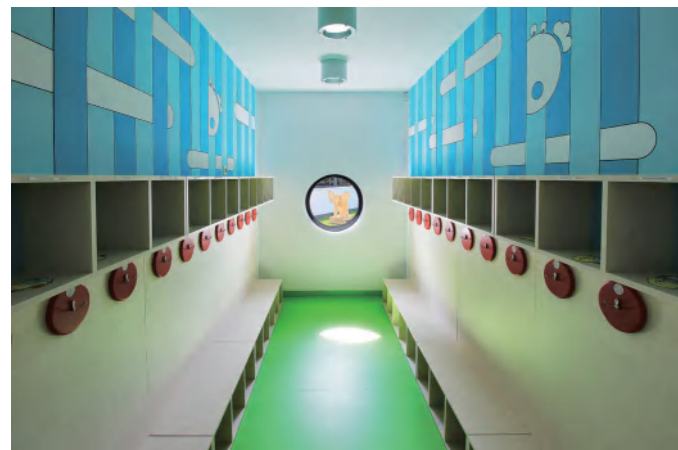
*Light and heavy steel
fabricated school*





HGST-088 幼儿园

Kindergarten





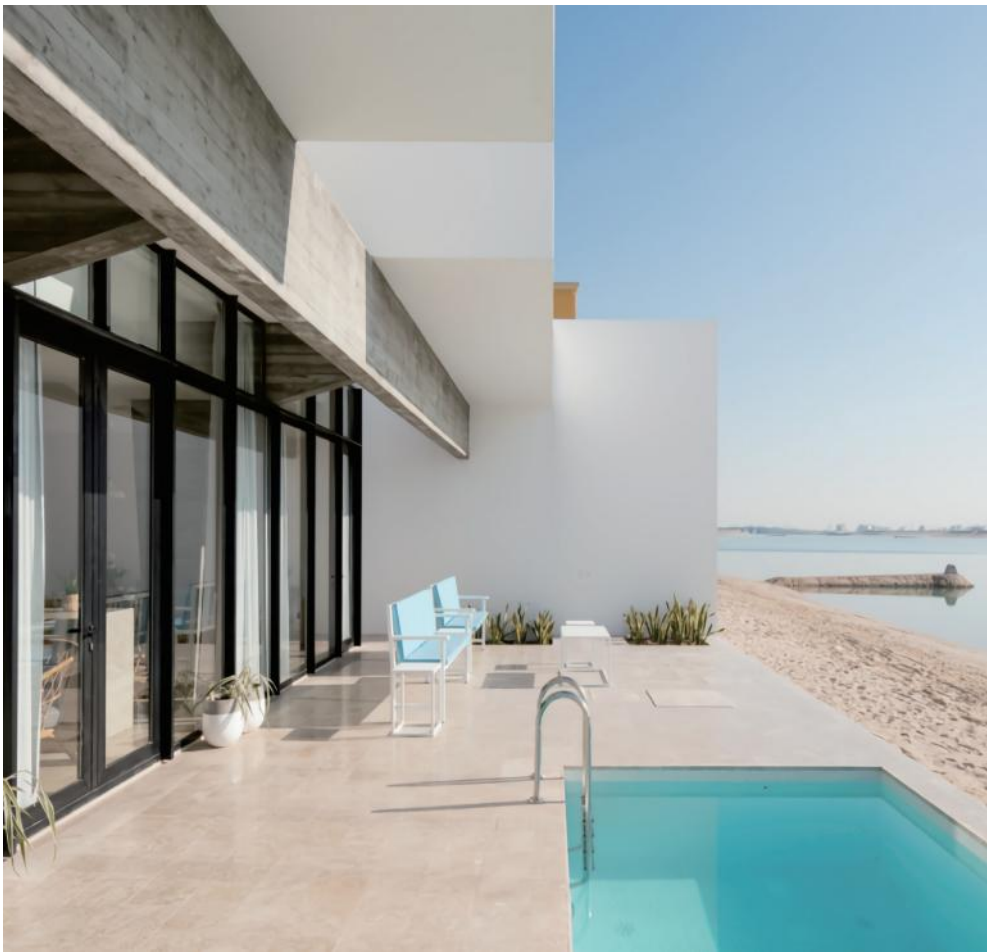
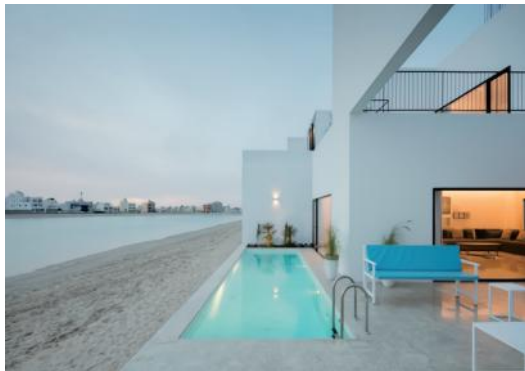
HGST-023 轻钢幼儿园 *Kindergarten*



HGST-079 大学







HGHV-005 装配式温泉度假区

Prefabricated Hot Spring Resort

该项目位于科威特（Kuwait）南部，地块座落在可俯瞰的其中一条内运河旁。这个开发项目旨在延长可接近的海岸线长度，让大海流进沙漠，创造出一系列由多个码头和船坞相连的运河。

五座别墅在基础平面上增加了相同的组织概念。尽管平面图是十分相似的，但外型构成呈现出细微的变化，让每座住宅都有自己独特的方式。从道路侧望过去，它们看起来像是同一座房屋的简单重复，但从运河一侧又可以看到更多不同的外观。

这个项目应用轻钢加重钢，配以环保的墙体材料，没有用混凝土。

The project is located in southern Kuwait and the plot is located next to one of the inner canals overlooking. The project development aims to extend the length of the accessible coastline, remember that the sea flows into the desert and create a series of canals connected by multiple docks and docks. The five villas add the same organizational concept on the basic plane. Although the plan is very similar, the appearance composition shows subtle changes, so that each house has its own unique way. Viewed from the side of the road, they look like a simple repetition of the same house, but more different appearances can be seen from the side of the canal.



HGHV-005 装配式温泉度假区

Prefabricated Hot Spring Resort

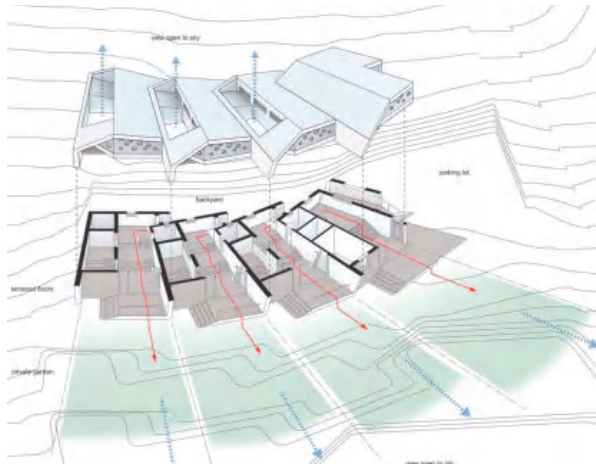


HGHV-003 创意度假酒店

Creative Resort

PROJECT
Cases

工程案例







HGHV-001 从化温泉酒店



CONGhua Creative Resort

HGHV-001 从化温泉酒店

PROJECT Cases 工程案例



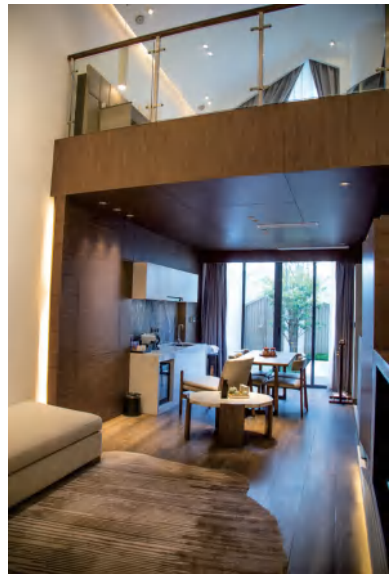


PROJECT
Cases

工程案例



HGHV-001 从化温泉酒店







广东梅州五华县益塘旅游度假区别墅项目

广东梅州五华益塘风景区别墅群酒店项目是由佛山市合阁钢构集成房屋施工建设的项目，采用轻钢装配建筑体系，由合阁设计及施工建设，工厂化生产，现场施工像搭积木一样，有效缩短建设周期，对景区酒店快速使用提供了安全的保障，符合国家建宅产业化的要求。本项目占地总面积1200m²，项目以梅花作为构思主体，五个建筑单位围绕中心展开，建筑单体间以平台连接，保证了每户的私密及景观。屋顶构成设计以及入口空间的形式设计师都围绕构思主体展开，打破了作为装配式建筑的固有形象。五华县益塘旅游区别墅项目结合益塘水库实际，围绕“山-水-果”做特、做新景点，丰富“游-看-行-食-玩”亮点，发展生态旅游，打响国家3a级旅游景区和国家水利风景区两个“国字号”旅游名片。



HGHV-003 五华梅花酒店

Plum Blossom Hotel





佛山市桂城南方电网I38电房项目

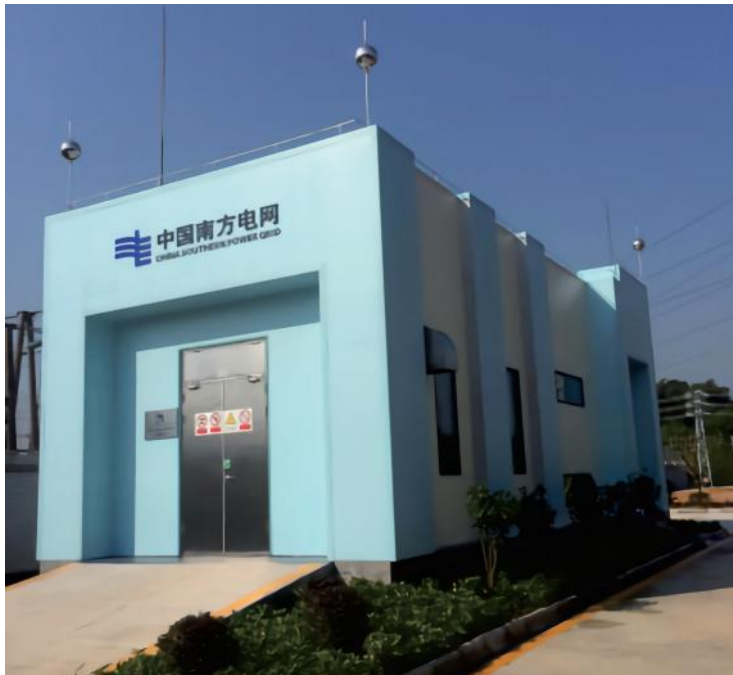
项目简介：南方电网I38电房项目是由佛山市合阁钢构集成房屋施工建设的项目，电房采用国家大力推荐的装配式钢结构，缩短了建设周期，具有结构自重轻、抗震性能好、环保可回收、施工现场整洁等优点。电房内墙，以独特的企口设计，卡件牢固，采用组合式墙体工艺技术，施工便捷，有效缩短施工周期，减少建筑垃圾。墙体效果美观，无需装饰，避免二次污染。

Project Description: China Southern Power Grid i38 electric house project is a project constructed by Foshan Hege steel structure integrated house. The electric house adopts the fabricated steel structure strongly recommended by the state, which shortens the construction cycle. It has the advantages of light structural weight, good seismic performance, environmental protection and recyclability, and clean construction site. The interior wall of the electric room is designed with a unique tongue and groove, the cards are firm, and the combined wall technology is adopted, which makes the construction convenient, effectively shortens the construction cycle and reduces construction waste. The wall effect is beautiful, no decoration is needed, and secondary pollution is avoided.



南方电网项目

China Southern
Power Grid Project

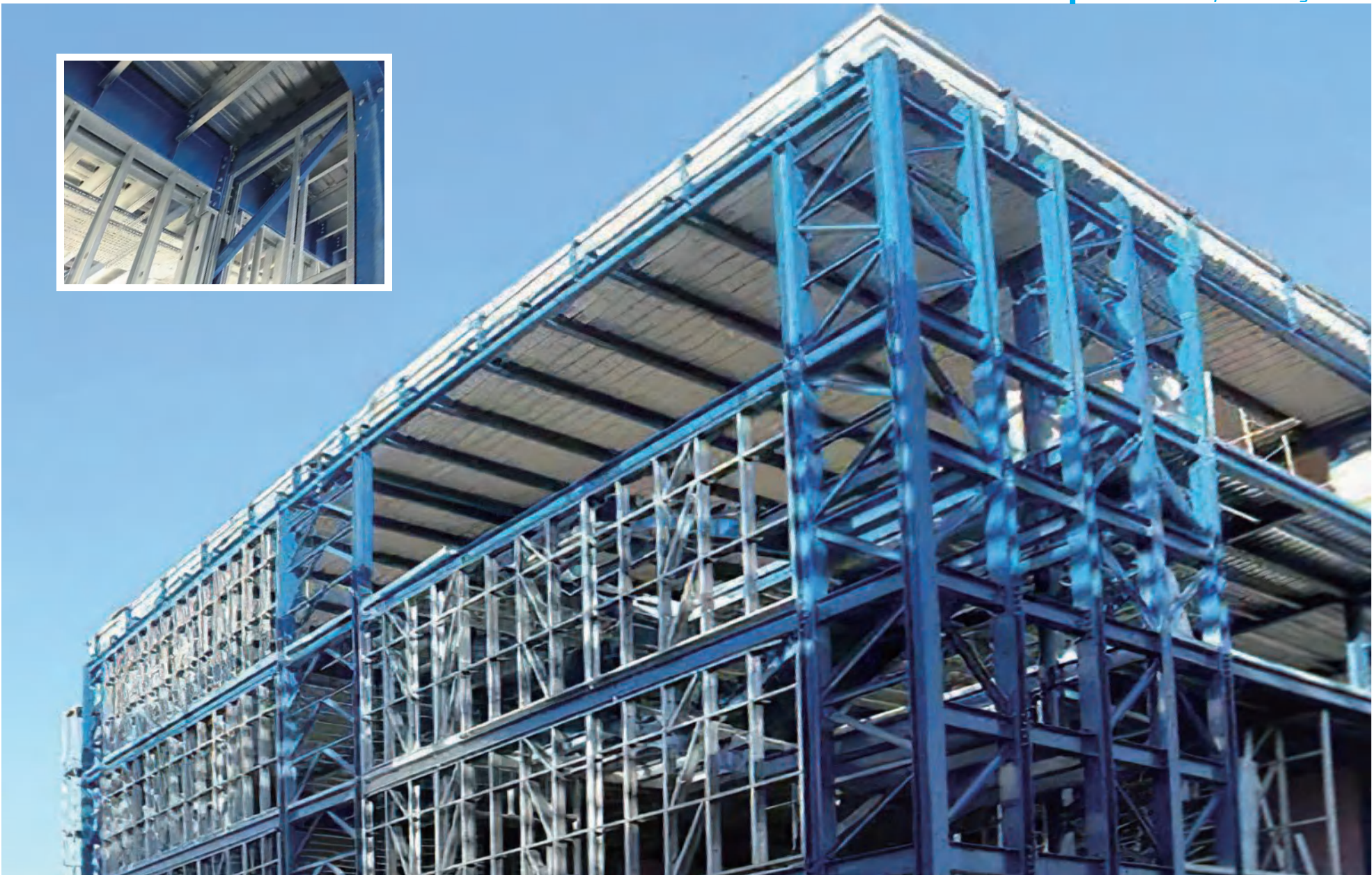




轻重钢装配式建筑城市新区

Light and heavy steel prefabricated building urban New Area





PROJECT CASE

工程案例



合阁非洲项目:重钢加轻钢龙骨医院







【编后语】

作为国内钢构集成房屋的大型生产制造者，合阁采用的轻体无机保温材料，为轻房地产行业带来了颠覆性地工业革命，塑造中国轻房地产行业的领军品牌！各大旅游行业、城镇服务、农业休闲观光、新农村建设等建设领域运营商争相合作，前景无限！

合阁是中国的钢构集成房屋资深制造商，也是模块化/装配式房屋解决方案提供商，集“规划-设计-生产-营销-运营-投资”于一体，塑造中国轻房地产行业领军品牌，始终走在轻房地产行业发展的前沿！坚定创新改变人们生活，突出因地制宜、绿色低碳、节能环保、节约便捷等特性，以保护生态，节省成本以及实现客户个性化完美体验为宗旨，在轻/重钢别墅、集装箱式别墅为核心业务的基础上，不断延伸轻房地产行业整体服务，为旅游居住、城镇化服务、农业休闲观光、新农村建设与高端私人定制等建设领域客户提供一站式完美服务，形成“咨询-规划-设计-安装施工-投资-运营-营销”一体化服务体系！

过去因为我们的创新与服务使我们的产品遍布全球各地，今后我们以更好的质量及售后服务为人居建筑做贡献。

佛山市合阁钢构集成房屋有限公司

As a large-scale manufacturer of steel structure integrated houses in China, the light inorganic thermal insulation materials adopted by Hege have brought a subversive industrial revolution to the light real estate industry and shaped the leading brand of China's light real estate industry! Operators in major tourism industries, urban services, agricultural leisure and tourism, new rural construction and other construction fields compete for cooperation, with unlimited prospects!

Hege is a senior manufacturer of steel structure integrated housing in China and a provider of modular/prefabricated housing solutions. It integrates "planing-Design-production-Marketing-operation-investment" to shape a leading brand in China's light real estate industry and always walks in the forefront of the development of light real estate industry! Firmly innovate and change people's lives, highlight the characteristics of adjusting measures to local conditions, green and low-carbon, energy conservation and environmental protection, saving and convenience, take the purpose of protecting ecology, saving costs and realizing customers, personalized and perfect experience, and continuously extend the overall service of the light real estate industry on the basis of mobile castle, light steel villa and container villa as the core business, so as to provide services for tourism, residence, urbanization Provide perfect one-stop services for customers in the construction fields of agricultural leisure and sightseeing, new rural construction and high-end private customization, and form an integrated service system of "consultation-Planing-Design-installation and construction-Investment-operation-Marketing"!

In the past, because of our innovation and service, our products spread all over the world. In the future, we will contribute to residential buildings with better quality and after-sales service.

Foshan Hege Steel Modular Housing Co.,Ltd.