

I HAVE QUESTIONS.
WHO SHOULD I ASK?

Staff Directory



ST. PETER'S LUTHERAN MINISTRY

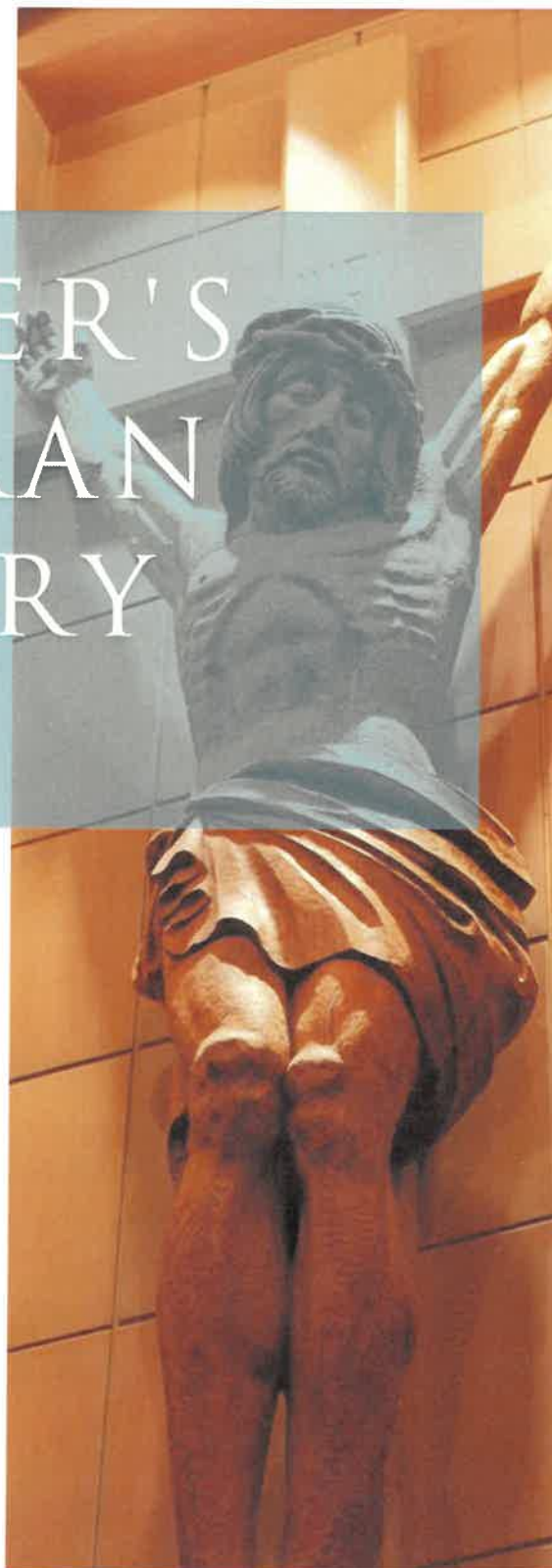
Quick Reference Guide

ADDRESSES & PHONE:

CHURCH & PRESCHOOL
7710 E. STATE BLVD
FORT WAYNE, IN 46815
C: (260) 749-5816
PS: (260) 748-0775

SCHOOL
7810 MAYSVILLE ROAD
FORT WAYNE, IN 46815
S: (260) 749-5811

PARISH HOUSE
7625 MAYSVILLE ROAD
FORT WAYNE, IN 46815



WHEN TO CONTACT THE PASTOR

Many people aren't sure exactly when to contact their pastor. In an increasingly complex world—when we are pressured from every side in daily living—here are some suggested times when it would be appropriate to call upon your pastors' services, friendship and support:

- ◆ When you or a member of the family enters the hospital. Upon admission, be sure to register as a Lutheran from St. Peter's.
- ◆ At the birth of a child or even when you discover the pregnancy so our PrayER teams can pray throughout the pregnancy.
- ◆ When you are facing a serious family problem.
- ◆ When you are facing a spiritual struggle.
- ◆ When there is a death.
- ◆ When there is a wedding to be planned.
- ◆ When you or your family must make an important decision.
- ◆ When you are unhappy about the church.
- ◆ When you need someone to talk with in confidence.
- ◆ Confession and Absolution
- ◆ When you have theological questions.
- ◆ When you'd like to lead a Bible Study.
- ◆ When you know people interested in membership or learning more about our faith.

LET THE CHURCH OFFICE KNOW...

- ◆ To update contact information such as new address, phone number or email.
- ◆ If you move from the area, enter college or begin military service—provide your change of address. In your new location, get acquainted with a congregation, pastor, campus ministry or chaplain nearest you. The church office and the pastors can help you with this part too if you'd like.
- ◆ If you are physically unable to attend church regularly, the church office can send you worship DVDs or show you how to watch services that are livestreamed and make arrangements with the pastors to provide monthly homebound pastoral care.
- ◆ If you'd like to schedule a baptism or wedding.
- ◆ General questions—they can direct your call.

PrayER Team
Through Prayer We Care

Prayer Text Hotline

Text Requests to

260 - 468 - 5816

On Call Pastor
(Call or Text)

(260) 888-6888

**New National Mental
Health Emergency
Phone Number**

988

PASTORAL STAFF



SENIOR PASTOR, **Pastor Danny Eggold**

pastordancy@stpetersfw.org
(ext. 210)

- ◆ Spiritual Care
- ◆ Elders
- ◆ Preaching & Worship
- ◆ Sunday & weekday Bible Study
- ◆ Hospital/Shut-In Visits
- ◆ Serves as the focal communication point for business issues from Board of Directors to Staff & Congregation as well as from Staff & Congregation back to Board of Directors

ASSOCIATE PASTOR, **Pastor Nate Widener**



pastornate@stpetersfw.org
(ext. 212)

- ◆ Direc. Community of Care
- ◆ Spiritual & Emotional Health Care
- ◆ Preaching & Worship
- ◆ Hospital/Shut-In Visits
- ◆ Adult & Youth Confirmation
- ◆ Sunday & weekday Bible Study

ADMIN & SHARE:

- ◆ Membership
- ◆ Properties
- ◆ Finance
- ◆ Spiritual & Mental Health Care
- ◆ Policies, By-laws, & Procedures

ASSOCIATE PASTOR, **Pastor Adam McDowell**

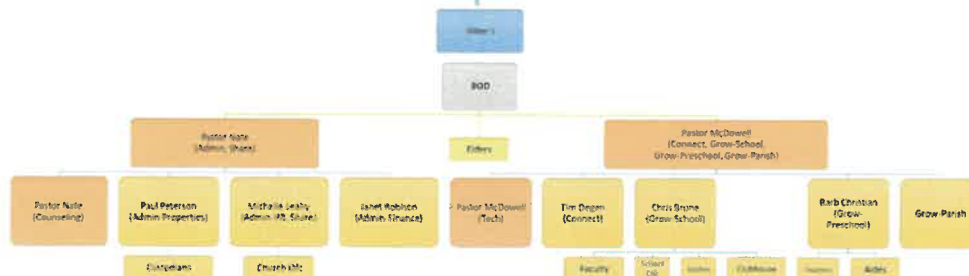


pastormcdowell@stpetersfw.org
(ext. 211)

- ◆ Spiritual Care
- ◆ Preaching & Worship
- ◆ Sunday & weekday Bible Study
- ◆ Hospital/Shut-In Visits
- ◆ Adult & Youth Confirmation

CONNECT & GROW:

- ◆ School / Preschool
- ◆ Worship
- ◆ Parish Ed
- ◆ Youth
- ◆ Technology



MINISTRY & ADMINISTRATIVE STAFF

DIRECTOR OF MUSIC MINISTRY, **Tim Degen**



tdegen@stpetersfw.org
(ext. 213)

- ♦ Worship Music & Special Services
- ♦ Bulletin & Worship Coordinator
- ♦ Day School Music Teacher
- ♦ Music for Weddings & Funerals
- ♦ Music Ministry Schedule
- ♦ Chapel Music for Preschool & School

Music/Ministry Teams:

- ♦ Adult Choir
- ♦ Brass Choir
- ♦ Percussion Ensemble
- ♦ Handbell Choir
- ♦ Junior Choir
- ♦ Praise Team (Rev. Dick Koehneke)
- ♦ Altar Guild

INTERIM DIRECTOR OF OPERATIONS, **Michelle Leahy**



mleahy@stpetersfw.org
(ext. 214)

- ♦ Organize & track care assignments for members & guests
- ♦ Legal
- ♦ Grants
- ♦ Insurance
- ♦ Human Resources
- ♦ Payroll
- ♦ Membership
- ♦ HOPE Instructor
- ♦ Grief Group Facilitator
- ♦ Wedding & Baptism Scheduler

Action Team Support:

- ♦ Nominating Team
- ♦ Senior Saints
- ♦ Social Ministry
- ♦ PrayER Team
- ♦ Shepherding Care Team
- ♦ Women's Ministry
- ♦ Missions
- ♦ CLHS Scholarships
- ♦ Friends of Faith
- ♦ Marriage Mentoring
- ♦ Wellness

RETIRED PASTORS PROVIDING CARE

Rev. Dick Koehneke



- ♦ Praise Team
- ♦ Mental Health Advocate for The Lutheran Foundation
- ♦ Community of Care

Rev. Denny Borchers



- ♦ Bible Study
- ♦ Social Ministry Team
- ♦ Missions Team

Rev. Al Bierlein



- ♦ Home Visitation & Communion
- ♦ Golden Years Worship Service
- ♦ Pastoral Advisor for Senior Saints

ADMINISTRATIVE STAFF

DIRECTOR OF FINANCE, **Janet Robison** jrobison@stpetersfw.org (ext. 222)



Provides overall direction to Church for: Provides overall direction to Schools for:

- ◆ Accounts Payable
- ◆ Budgets & Financial Reporting
- ◆ Contributions
- ◆ Donor Designated Funds
- ◆ Memorials
- ◆ Endowment

- ◆ FACTS Billing
- ◆ Financial Aid
- ◆ Accounts Payable
- ◆ Budgets & Financial Reporting

Action Teams:

- ◆ Finance Team
- ◆ Offering Counting Team

Ask her questions about:

- ◆ Fundraising
- ◆ Financial

FINANCE SUPPORT, **Miranda Meyer**



EXECUTIVE ADMIN ASSIST, **Amy Widener**



awidener@stpetersfw.org
churchoffice@stpetersfw.org
(ext. 201)

- ◆ Church Office Management
- ◆ Church Records
- ◆ Communications
- ◆ News & Notes
- ◆ Calendar Manager

Ask her questions about:

- ◇ How we can pray for you
- ◇ How, where, and who to connect to
- ◇ Scheduling Events
- ◇ Volunteering
- ◇ Updating Contact Information
- ◇ Ministry Center Table Reservation
- ◇ Private Rentals

RECEPTION & HOSPITALITY,
Kami Mogelvang



reception@stpetersfw.org (ext. 200)
Front Desk can help you with:

- ◆ Directing your call or questions
- ◆ How, where, & who to connect to
- ◆ Updating contact information
- ◆ How we can pray for you?
(PrayER Team Updates)

kmogelvang@stpetersfw.org

- ◆ GROW & CONNECT Support

CHURCH OFFICE SUPPORT,
Rita Knothe



PRESCHOOL ADMINISTRATIVE STAFF

PRESCHOOL DIRECTOR, **Barb Christian**



bchristian@stpetersfw.org
(ext. 400)

Provides overall direction and administration to the Preschool.

- ◆ Oversee PS staff & daily operations
- ◆ Create & implement curriculum
- ◆ Connect & build relationships

Ministry Teams:

- ◇ Preschool Board

Ask her questions about:

- ◇ Preschool Enrollment
- ◇ Preschool Clubhouse (3-4 year olds)
- ◇ Preschool Calendar Manager
- ◇ Special Gifts/Needs of the Preschool
- ◇ Supporting the Preschool Endowment

ASSISTANT PRESCHOOL DIRECTOR, **Alyssa Nix**



anix@stpetersfw.org
(ext. 401)

- ◆ Providing Support to the Preschool Director
- ◆ 3 Year Old Busy Bees

Ministry Teams:

- ◇ Preschool Board

Ask her questions about:

- ◇ Preschool Enrollment
- ◇ Preschool Clubhouse (3-4 year olds)
- ◇ Preschool Calendar Manager

PRESCHOOL TEACHERS & STAFF

PRESCHOOL TEACHER, **Laurie Grim**



lgrim@stpetersfw.org
(ext. 413)

- ◆ 4 Year Old Bears

PRESCHOOL & PEEPS TEACHER, **Haylee Caywood**



hcaywood@stpetersfw.org
(ext. 415)

- ◆ 4 Year Old Bears

PRESCHOOL TEACHER, **Haley Biggs**



hbiggs@stpetersfw.org
(ext. 412)

- ◆ 5 Year Old Cubs

PRESCHOOL & PEEPS TEACHER, **Grace Christian**



gchristian@stpetersfw.org
(ext. 411)

- ◆ 3 Year Old Busy Bees
- ◆ PEEPS

PRESCHOOL TEACHERS & STAFF

PLAYDATE TEACHER,
Dianna Bultemeier



PRESCHOOL AIDE, & PRESCHOOL CLUB HOUSE
SUPERVISOR, **Beth Busche**



PRESCHOOL AIDE & CLUBHOUSE
Angela Freeman



PRESCHOOL AIDE,
Brenda Helmkamp



PRESCHOOL AIDE & CLUBHOUSE,
Akasha Kinley



PRESCHOOL AIDE,
Alicia Weaver



SCHOOL ADMINISTRATIVE STAFF

DAY SCHOOL PRINCIPAL, **Chris Brune**



cbrune@stpetersfw.org
(ext. 301)

Provides overall direction and administration to the Day School

- ◆ Management of school, education programs & school ministry
- ◆ School Culture
- ◆ School Office Management
- ◆ Public Relations & Communications
- ◆ Financial Planning & Accounting as it pertains to the school

Ministry Teams:

- ◇ School Board
- ◇ PTL (Parent-Teacher League)
- ◇ Auction

Ask him questions about:

- ◇ Day School Clubhouse (K– 8th grade)
- ◇ Day School Enrollment
- ◇ Supporting SGO (Scholarship Granting Organization) Program
- ◇ Supporting Day School Endowments
- ◇ Special Gifts/Needs of the Day School

ADMISSIONS AND ENROLLMENT, **Sarah Horacek**



shoracek@stpetersfw.org
(ext. 321)

- ◆ School Marketing
- ◆ School Record Database Management
- ◆ Admissions

Ask her questions about:

- ◇ Day School Enrollment
- ◇ Scrip
- ◇ Scheduling School Tours
- ◇ Updating School Contact Info

EXECUTIVE ADMIN ASSISTANT, **Diana Habegger**



dhabegger@stpetersfw.org
(ext. 302 & 300)

- ◆ Administrative Support to the Principal
- ◆ School Calendar Manager
- ◆ Directing Calls & Questions
- ◆ Choice Scholarships
- ◆ National School Lunch Program

Ask her questions about:

- ◇ Scrip
- ◇ Updating School Contact Info
- ◇ School Schedule/Activities

SCHOOL TEACHERS & STAFF

KINDERGARTEN TEACHER, **Erin Schoof**



eschoof@stpetersfw.org
(ext. 310)

FIRST GRADE TEACHER, **Holly Ehle**



hehle@stpetersfw.org
(ext. 311)

SECOND GRADE TEACHER, **Maddie Williams**



mwilliams@stpetersfw.org
(ext. 312)

THIRD GRADE TEACHER & ASST. ATHLETIC
DIRECTOR, **Katie Ervin**



kervin@stpetersfw.org
(ext. 313)

- ◆ Coordinates Athletic Schedule

FOURTH GRADE TEACHER, **Kelsey Zimmerman**



ksimmerman@stpetersfw.org
(ext. 314)

FIFTH GRADE TEACHER, **Ryan Mello**



rmello@stpetersfw.org
(ext. 315)

SIXTH GRADE TEACHER, **Hollie Johnson**



hjohnson@stpetersfw.org
(ext. 316)

SEVENTH GRADE TEACHER, **Zach Burchardt**



zburchardt@stpetersfw.org
(ext. 317)

- ◆ HSYG

EIGHTH GRADE TEACHER & ATHLETIC DIRECTOR, **Mindy Lunz**



mlunz@stpetersfw.org
(ext. 318)

athletics@stpetersfw.org

Teams:

- ◆ Operation of School Athletic Program
 - ◆ Coordinates Officials
 - ◆ Coordinates Tournaments
 - ◆ Recruiting & Supporting Coaching Staff
- ◆ Booster Club

SCHOOL TEACHERS & STAFF

DIRECTOR OF WILDCAT LEARNING LAB

Heather Volmerding



hvolmerding@stpetersfw.org
(ext. 332)

WILDCAT LEARNING LAB,

Jill Rodenbeck



Autumn Bridge



PHYSICAL EDUCATION, HEALTH, & MIDDLE
SCHOOL MATH

Brett Motter



bmotter@stpetersfw.org
(ext. 320)

ART COORDINATOR, **Andrea Koenig**



akoenig@stpetersfw.org
(ext. 319)

ILEAP SUPPORT SPECIALIST
2ND GRADE, **Brittany Lehman**



STUDENT TEACHER, (FALL)
Madalyn Moehring



TEACHER AIDE,
Amy Campbell



TEACHER AIDE,
Connie Dierks



TEACHER AIDE,
Cortney Ehle-Fortney



TEACHER AIDE,
Stacia Traxler



SCHOOL TEACHERS & STAFF

FOOD SERVICE MANAGER, **Jessica Arnett**



jarnett@stpetersfw.org
(ext. 333)

LIBRARY, **Brandy Fry**



CAFETERIA, **Nadine Paulin**



CAFETERIA, **Teresa Klotz**



CAFETERIA, **Samantha Glover**



DAY SCHOOL CLUBHOUSE SUPERVISOR

Hannah Stambaugh



SCHOOL NURSE

NAME



DAY SCHOOL CLUBHOUSE

Katie Amstutz



Becca Flanigan



Kierstyn Whitacre



PROPERTY MANAGEMENT STAFF

PROPERTY MANAGER, **Paul Peterson**



ppeterson@stpetersfw.org

Serves the Church and schools by providing general care & maintenance of church, school & preschool buildings & grounds.

- ◆ Point of contact for all contracted labor Ministry-wide
- ◆ Landscaping
- ◆ Cemetery Committee
- ◆ Overseeing Ministry-wide Property Projects

Ministry Teams:

- ◇ Properties
- ◇ Cemetery
- ◇ Lawn Mowing Crew

JANITORIAL & MAINTENANCE SUPPORT, **Kyle Thompson**



Thank you for keeping the staff of our St. Peter's Ministry in your daily prayers.

Dearest Heavenly Father, please watch over the staff of St. Peter's as they go throughout the coming year. Protect them that they may serve You and grant them peace when they face challenges. Provide them with the strength, courage, and wisdom to do what is right in Your name. Allow them to place You first in their priorities and honor You with their vocation. You are the giver of all good things Holy Father, and we thank You that You have provided us with a staff who are willing to be Your hands and feet. Provide them with the words to speak and the actions to take in order to glorify You.
In the name of the Father, the Son, and the Holy Spirit. Amen.