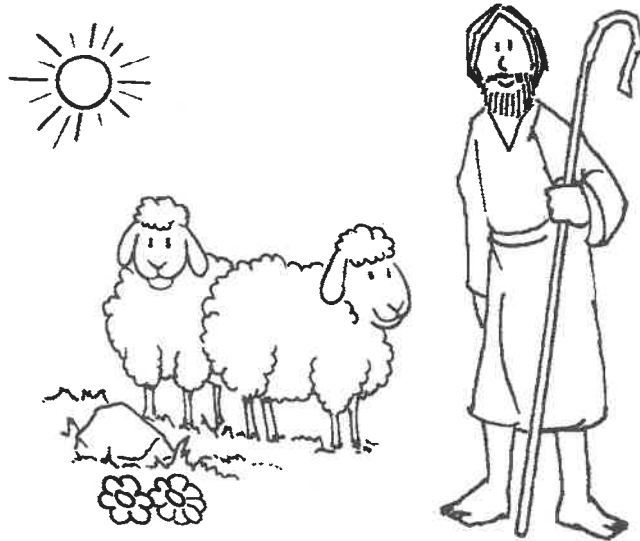
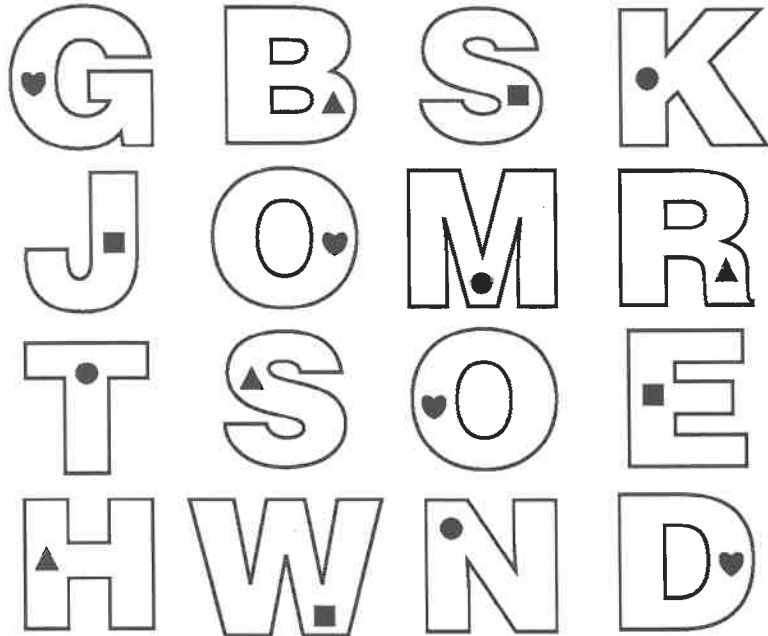


What kind of Shepherd is Jesus?

Shade in the letters that have a ♥.



Children's Worship Bulletin™



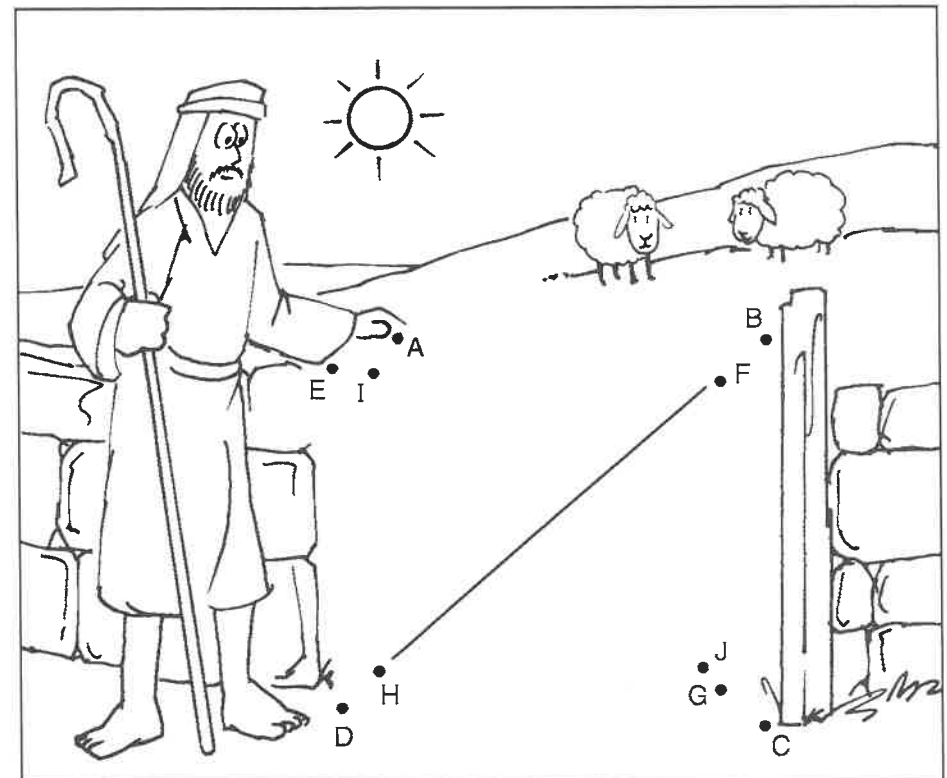
Ages 3+

April 26, 2026 • John 10:1-10

The Good Shepherd

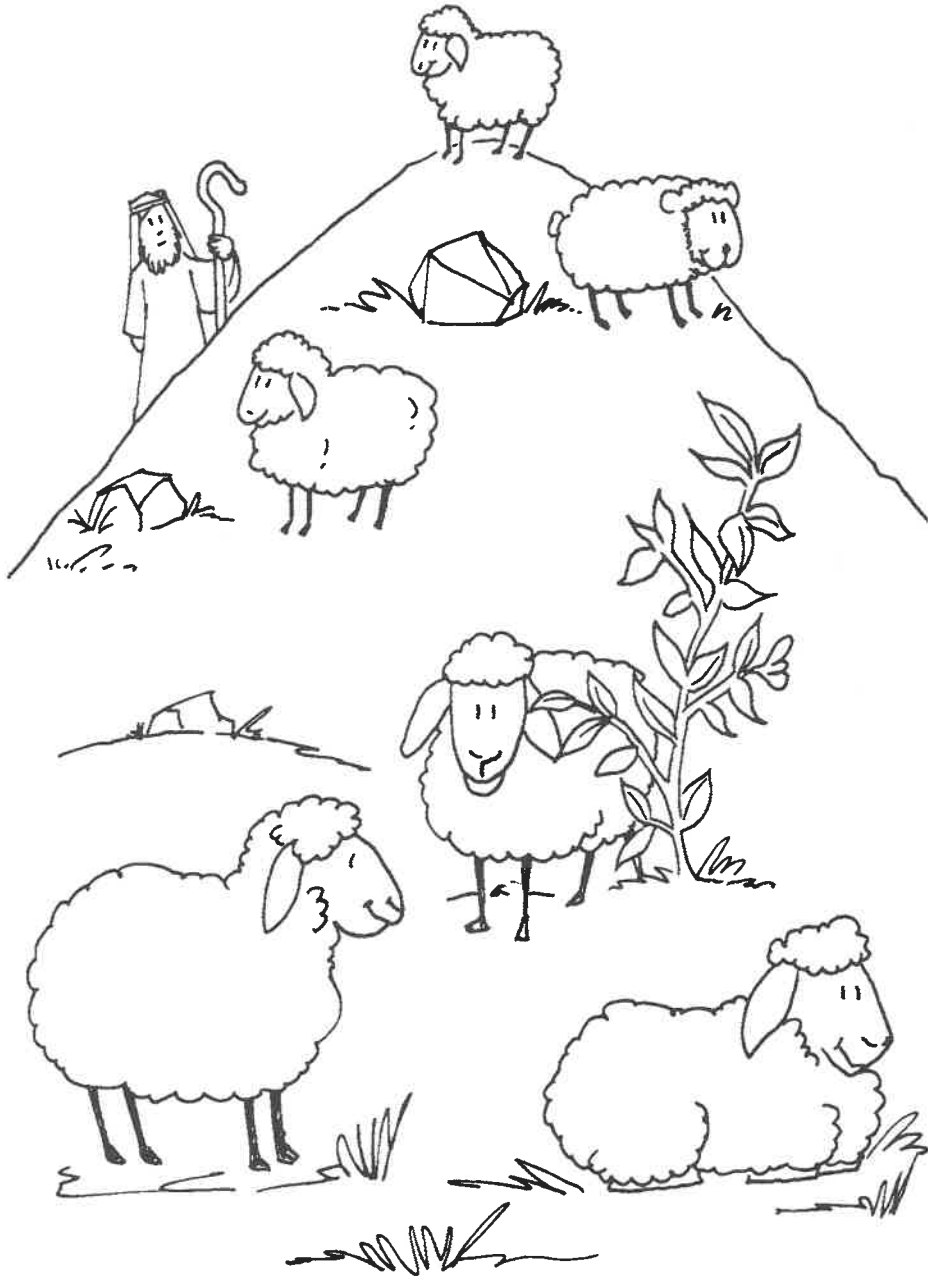
The shepherd enters by the gate.

Connect the dots: A B C D E F G H I J



The sheep listen to the shepherd.

Count how many sheep. 6 or 7 ?



The shepherd knows each sheep by name.

Circle the matching sheep in each row.

