



SBY Regional Airport

5484 Airport Terminal Rd Unit A,
Salisbury, MD 21804



Summary

PRICING: Land Lease, TBD

LOT SIZE: Will Subdivide

ZONING: Airport

MARKET: Eastern Shore of
MD, VA and DE

SCHEDULED AIRLINE SERVICE:
American Airlines, Breeze
Airways

DESTINATIONS: Philadelphia,
Charlotte, Orlando

Runway: 6,400' Expanding
to 7,600'

Property Overview

The Salisbury-Ocean City: Wicomico Regional Airport (SBY) is Maryland's second largest with scheduled airline service offered by Piedmont Airlines, a wholly-owned subsidiary of American Airlines and Breeze Airways. Piedmont offers service to Philadelphia International and Charlotte's Douglas International Airport while Breeze offers direct service to and from Orlando International Airport.

SBY is also home to a Fixed Base Operator, numerous corporate hangars, the Maryland State Medivac Unit, FedEx, rental car companies and more.

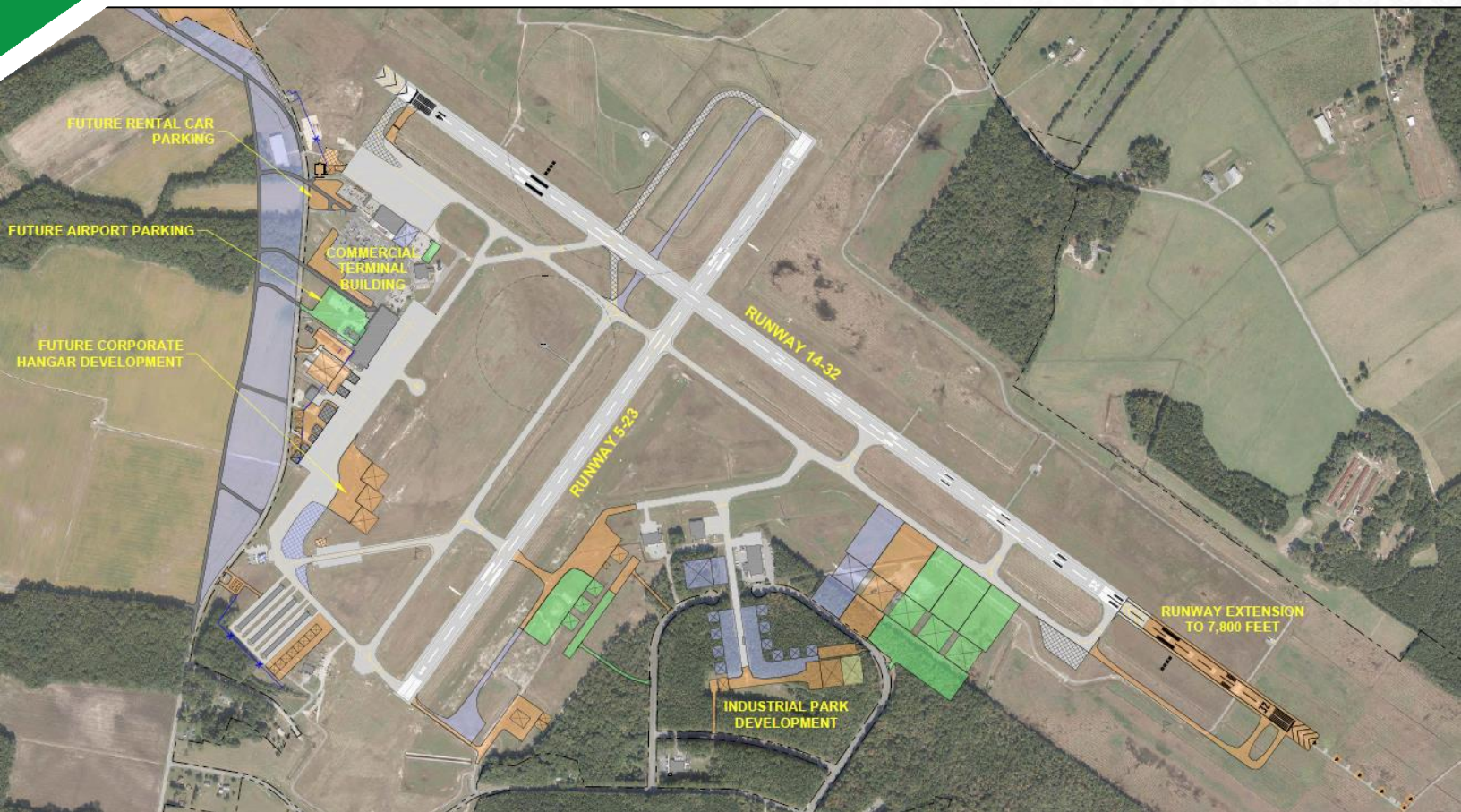


410-749-1251
swed.org | info@swed.org



SBY Regional Airport

5484 Airport Terminal Rd Unit A, Salisbury, MD
21804



Development Potential

The Airport Industrial Park consists of approximately 150 acres and can accommodate both aeronautical and non-aeronautical uses. The park is served with municipal water and sewer, electric and natural gas. Long term land leases are available.

Please call SWED to discuss the specifics of your particular project.



410-749-1251
swed.org | info@swed.org