

Phillips Welding Supply, Inc.

Steel & Pipe Sales



1822 Fort Worth Highway
Weatherford, Texas 76086
(817) 596-0450 Fax (817) 596-0742
Toll Free (800) 281-7933
sales@phillipsweldingsupply.com

Project examples



Metal roofing is much stronger and more durable than asphalt shingle roofing. Because metal roofing is so durable, it has long been the choice for many school, government, and industrial buildings. With a 40 year limited paint warranty on our panels, your metal roof can last twice as long as most conventional roofs.

We can provide estimates on prefabricated bolt-up buildings or weld-up buildings based on your budget and needs.



Our 20 year limited warranty polyester, Polydure Paint System, and 40 year limited warranty Siliconized Modified Polyester, Valspar Paint System, are available in many different colors and are listed in the building components section of our catalog, page 14. Color/profile charts are available upon request.

Policies and Procedures

Return Material Policy

On all refunds, the material must be returned in original condition and accompanied with an invoice within 30 days of the date of purchase. The condition of the material returned will be determined by Phillips Welding Supply. No returns or refunds on sheet metal, trim, doors or special order products. Restocking charge may be assessed at time of return.

Stocking and Pricing Policy

Some products listed in this catalog are not kept in stock at all times. Due to market fluctuations, prices are subject to change without notice. Please call to verify pricing and availability. If you have an inquiry about a product not listed, please call. If they are not in stock, we would like to special order them for you.

Delivery Service

Phillips Welding Supply offers a delivery service to its customers. Please call for pricing and availability.

Storage Policy

All orders on stock products must be picked up, or arrangements made for delivery, within 10 working days from the date of the order. After this time, the material will be placed back into stock. To request an extension, please notify your sales representative.

Special Order Policy

Phillips Welding Supply requests that all special order items be paid in full, and have written confirmation prior to ordering products.

Telephone Orders

All special orders received over the phone will require written confirmation prior to ordering. Customers that refuse to submit written confirmation assume full responsibility for the accuracy of their order.

Quote and Takeoff Policy

Please review and verify all provided information on your quotes and orders e.g. type of item, lengths, quantities, and colors prior to placing your order. Phillips Welding Supply provides the takeoff service as a courtesy and is not liable for errors or omissions.

Table of Contents

Project examples	2
Beams, & angle iron	4
Channels, purlin & eave strut	5
Hot rolled plate & sheet	6
Expanded steel	6
Cold rolled sheet	6
Weld plates & floor plates	7
Flat bars	7
Hot & cold rolled round	8
Hot & cold rolled square bar	8
Round & rectangular tubing.	8
Square tubing	9
Fencing components	10 - 11
Pipe & structural pipe	12
Bar grating.	12
Rebar.	13
Anchor bolts.	13
Sucker rods	13
Miscellaneous building components	13
Building components overview	14
Building components sheets & trim	14
Building component fasteners	15
Field shear.	15
Doors & door kits.	16
Windows, skylights, track & vents	16
Cupolas	16
Building components trim examples	17 - 18
Color Swatches	19

Standard I Beam

4" X 2 11/16" X 3/16" X 7.7#
 6" X 3-5/16" X 1/4" X 12.5#
 8" X 4" X 1/4" X 18.4#



WF Beam

4" X 4-1/16" X 3/8" X 13#
 6" X 3-15/16" X 3/16" X 9#
 6" X 6" X 1/4" X 15#
 6" X 6" X 3/8" X 20#
 8" X 3-15/16" X 3/16" X 10#
 8" X 4" X 1/4" X 13#
 8" X 4" X 5/16" X 15#
 8" X 5-1/4" X 5/16" X 18#
 8" X 6-1/2" X 3/8" X 24#
 8" X 8" X 5/16" X 31#
 10" X 4" X 3/16" X 12#
 10" X 5-3/4" X 1/4" X 22#
 12" X 4" X 1/4" X 14#
 12" X 4" X 5/16" X 16#
 12" X 4" X 3/8" X 19#
 12" X 6-1/2" X 3/8" X 26#
 14" X 5" X 5/16" X 22#
 16" X 5-1/2" X 3/8" X 26#
 18" X 6" X 7/16" X 35#



Angle Iron

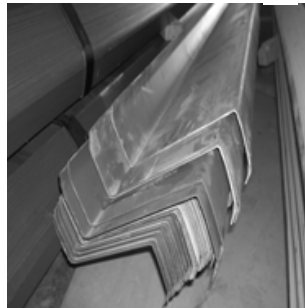
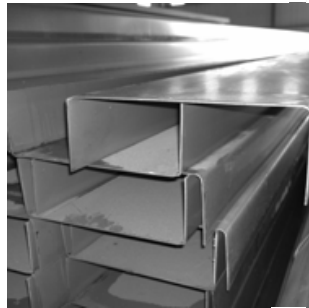
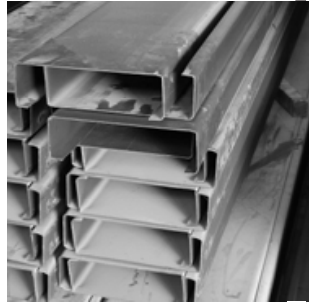
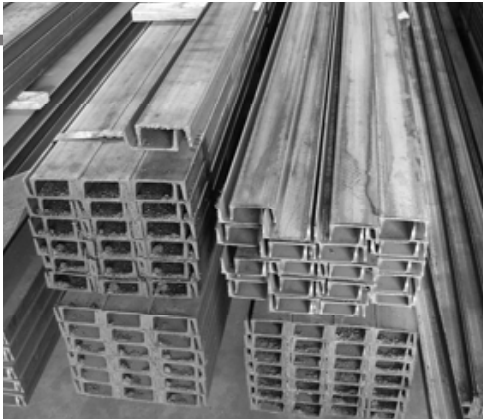
1/2" X 1/2" X 1/8"
 3/4" X 3/4" X 1/8"
 1" X 1" X 1/8"
 1" X 1" X 3/16"
 1" X 1" X 1/4"
 1-1/4" X 1-1/4" X 1/8"
 1-1/4" X 1-1/4" X 3/16"
 1-1/2" X 1-1/2" X 1/8"
 1-1/2" X 1-1/2" X 3/16"
 1-1/2" X 1-1/2" X 1/4"
 2" X 2" X 1/8"
 2" X 2" X 3/16"
 2" X 2" X 1/4"
 2" X 2" X 3/8"
 2-1/2" X 2-1/2" X 3/16"
 2-1/2" X 2-1/2" X 1/4"
 3" X 2" X 3/16"
 3" X 2" X 1/4"
 3" X 3" X 3/16"
 3" X 3" X 1/4"
 3" X 3" X 3/8"
 3" X 3" X 1/2"
 3-1/2" X 3-1/2" X 1/4"
 4" X 3" X 1/4"
 4" X 4" X 1/4"
 4" X 4" X 3/8"
 4" X 4" X 1/2"
 5" X 3" X 1/4"
 5" X 5" X 3/8"
 6" X 4" X 3/8"
 6" X 6" X 3/8"
 6" X 6" X 1/2"
 8" X 4" X 1/2"

2" X 2" X 14ga Painted Base
 4" X 2" X 14ga Painted Base



Standard Channels

1" X 1/2" X 1/8" X .8#
 1-1/2" X 1/2" X 1/8" X 1.12#
 2" X 1" X 1/8" X 1.59#
 3" X 1-3/8" X 5/32" X 3.5#
 3" X 1-3/8" X 3/16" X 4.1#
 4" X 1-9/16" X 1/8" X 4.5#
 4" X 1-9/16" X 3/16" X 5.4#
 4" X 1-3/4" X 5/16" X 7.25#
 5" X 1-11/16" X 3/16" X 6.7#
 6" X 1-7/8" X 3/16" X 8.2#
 7" X 2-1/16" X 1/4" X 9.8#
 8" X 2-1/4" X 1/4" X 11.5#
 10" X 2-5/8" X 1/4" X 15.3#
 12" X 2-15/16" X 1/4" X 20.7#



Purling, Receiver Channels

Painted CEE Purlin

3"	x	1-1/2"	x	14ga
4"	x	1-1/2"	x	14ga
4"	x	2"	x	14ga
6"	x	2"	x	14ga
8"	x	2-1/2"	x	14ga
8"	x	3-1/2"	x	12ga
10"	x	2-3/4"	x	14ga
12"	x	3-1/2"	x	14ga

Painted Receiver

4"	x	2"	x	14ga
6"	x	2-1/2"	x	14ga
8"	x	3"	x	14ga
8"	x	3"	x	12ga
10"	x	3"	x	14ga

Eave Strut (2:12 Dbl Pitch)

8"	x	5"	x	2-3/4"	x	14ga
----	---	----	---	--------	---	------

Painted Zee Purlin

8"	x	2-1/2"	x	14ga
----	---	--------	---	------

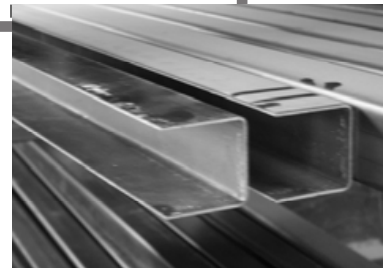
Junior Channels

10" X 1-1/2" X 3/16" X 8.4#
 12" X 1-1/2" X 3/16" X 10.6#



Formed (Stall) Channels

1-5/8" x 1-5/8" x 14ga x 8'
 1-5/8" x 1-5/8" x 14ga x 10'
 1-5/8" x 1-5/8" x 14ga x 12'



Hot Rolled Plate

3/16"

24" x 24"
24" x 48"
48" x 48"
48" x 96"
48" x 120"
60" x 96"
60" x 120"

1/2"

24" x 24"
24" x 48"
48" x 48"
48" x 96"
48" x 120"
60" x 96"
60" x 120"

1"

24" x 24"
24" x 48"
48" x 48"
48" x 96"
48" x 120"
60" x 120"

1/4"

24" x 24"
24" x 48"
48" x 48"
48" x 96"
48" x 120"
60" x 96"
60" x 120"
60" x 144"

3/4"

24" x 24"
24" x 48"
48" x 48"
48" x 96"
48" x 120"
60" x 120"

3/8"

24" x 24"
24" x 48"
48" x 48"
48" x 96"
48" x 120"
60" x 96"
60" x 120"



Cold Rolled Sheet

18ga Cold Rolled

48" x 96"



Hot Rolled Sheet

16ga

24" x 96"
48" x 96"
48" x 120"
60" x 96"
60" x 120"

11ga

12" x 120"
24" x 120"
48" x 96"
48" x 120"
48" x 144"
60" x 96"
60" x 120"

14ga

48" x 96"
48" x 120"
48" x 144"
60" x 96"
60" x 120"

10ga

48" x 96"
48" x 120"
60" x 96"
60" x 120"

Expanded Steel

Flattened Expanded Steel

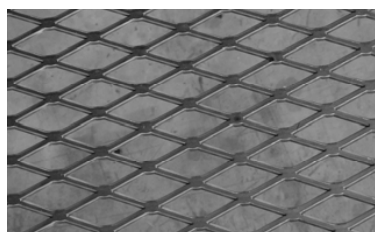
48" x 96" x 1/8" x #24	60" x 96" x 3/4" x #9
48" x 96" x 1/2" x #16	60" x 120" x 3/4" x #9
48" x 96" x 1/2" x #13	72" x 120" x 3/4" x #9
48" x 48" x 3/4" x #9	48" x 96" x 1-1/2" x #9
48" x 96" x 3/4" x #9	

Standard Expanded Steel

48" x 96" x 3/4" x #9
48" x 96" x 1-1/2" x #9
48" x 96" x 1-1/2" x #6

Grating

48" x 96" x 4.27#



11ga P&O (Pickled & Oiled)

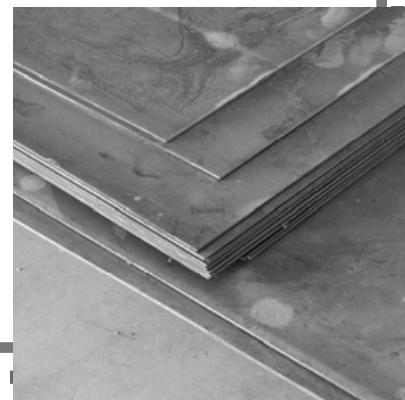
48" x 120"

12ga P&O

48" x 96"

12ga

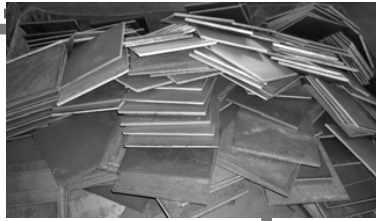
48" x 96"
48" x 120"
60" x 96"
60" x 120"



Weld Plates

Purlin Clips

3" x 5" x 10ga
4" x 6" x 3/16"
5" x 7" x 3/16"
6" x 9" x 3/16"



Weld Plates

6" x 6" x 1/4" 8" x 15" x 1/2"
8" x 8" x 1/4" 8" x 17" x 1/2"
6" x 9" x 1/2" 8" x 19" x 1/2"
6" x 13" x 1/2"

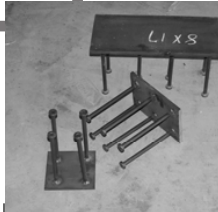
Weld Plates W/Holes

3" x 8" x 1/4" W/2 holes
4" x 4" x 3/16" W/4 holes
6" x 6" x 1/4" W/4 holes
8" x 8" x 1/4" W/4 holes



Weld Plates With Studs

6" x 6" x 3/8" W/4 (1/2 x 6) Studs
6" x 9" x 1/2" W/5 (5/8 x 8) Studs
6" x 13" x 1/2" W/6 (5/8 x 8) Studs
8" x 15" x 1/2" W/8 (5/8 x 8) Studs
8" x 17" x 1/2" W/8 (5/8 x 8) Studs
8" x 19" x 1/2" W/8 (5/8 x 8) Studs



Floor Plates

14ga

48" x 96"

1/8

48" x 96"

48" x 120"

48" x 144"

60" x 96"

60" x 120"

1/4

48" x 96"

48" x 120"

60" x 120"

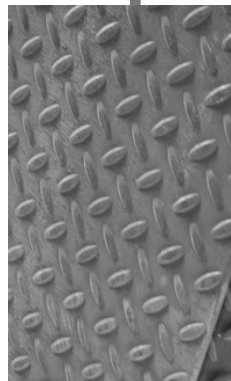
3/16

48" x 96"

60" x 120"

1/8 Aluminium

48" x 96"



Flat Bars

1/8" x 1/2"

1/8" x 3/4"

1/8" x 1"

1/8" x 1-1/2"

1/8" x 2"

1/8" x 3"

1/8" x 4"

1/8" x 6"

1/8" x 8"

3/16" x 3/4"

3/16" x 1"

3/16" x 1-1/2"

3/16" x 2"

3/16" x 3"

3/16" x 4"

3/16" x 5"

3/16" x 6"

3/16" x 8"

3/16" x 12"

1/4" x 1/2"

1/4" x 3/4"

1/4" x 1"

1/4" x 1-1/4"

1/4" x 1-1/2"

1/4" x 2"

1/4" x 2-1/2"

1/4" x 3"

1/4" x 4"

1/4" x 5"

1/4" x 6"

1/4" x 8"

1/4" x 10"

1/4" x 12"

3/8" x 1"

3/8" x 1-1/2"

3/8" x 2"

3/8" x 2-1/2"

3/8" x 3"

3/8" x 4"

3/8" x 5"

3/8" x 6"

3/8" x 8"

3/8" x 10"

3/8" x 12"

1/2" x 1"

1/2" x 1-1/2"

1/2" x 2"

1/2" x 2-1/2"

1/2" x 3"

1/2" x 4"

1/2" x 5"

1/2" x 6"

1/2" x 8"

1/2" x 10"

1/2" x 12"

3/4" x 2"

3/4" x 3"

3/4" x 6"

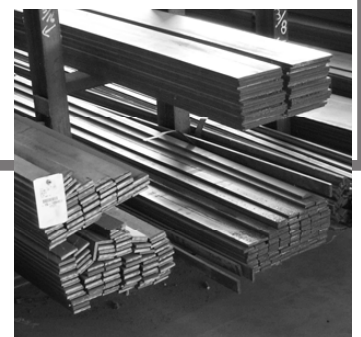
1" x 2"

1" x 4"

1" x 6"

1" x 8"

1" x 12"



Round Bar Stock

Cold Rolled

1/8"
3/16"
1/4"
5/16"
3/8"
1/2"
5/8"
3/4"
7/8"
1"
1-1/8"
1-1/4"
1-3/8"
1-1/2"
2"



Hot Rolled

1/4"
5/16"
3/8"
7/16"
1/2"
9/16"
5/8"
3/4"
7/8"
1"
1-1/4"
1-3/8"
1-1/2"
1-3/4"
2"

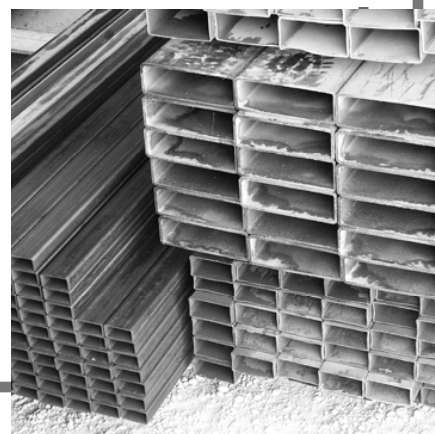
Rectangular Tubing

Unpainted Tubing

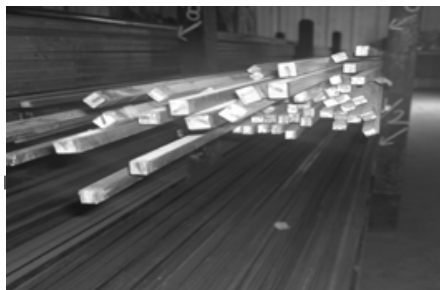
2" x 1" x 14ga (.075)
2" x 1" x 11ga (.120)
3" x 1" x 14ga (.075)
3" x 2" x 11ga (.120)
3" x 2" x 3/16" (.188)
4" x 2" x 14ga (.075)
4" x 2" x 11ga (.120)
4" x 2" x 3/16" (.188)
4" x 2" x 1/4" (.250)
4" x 3" x 1/4" (.250)
6" x 2" x 3/16" (.188)
6" x 4" x 1/4" (.250)
8" x 2" x 11ga (.120)
8" x 4" x 3/16" (.188)
8" x 4" x 1/4" (.250)

Painted

2" x 1" x 14ga (.075)
3" x 1-1/2" x 14ga (.075)
3" x 2" x 14ga (.075)
4" x 2" x 14ga (.075)
6" x 2" x 14ga (.075)
6" x 2" x 11ga (.120)



Square Bar Stock



Cold Rolled

3/16"
1/4"
5/16"

Hot Rolled

3/8"
1/2"
5/8"
3/4"
7/8"
1"

Round Tubing

3/4" OD x 14ga

1" OD x 14ga

1" OD x 12ga (Sch 10)

1-1/4" OD x 11ga

1-5/16" OD (1.315) x 14ga

1-5/16" OD (1.315) x 11ga

1-1/2" OD x 11ga

1-5/8" OD (1.660) x 14ga

1-5/8" OD x 11ga

1-3/4" OD x 11ga

1-7/8" OD (1.900) x 14ga

2" OD x 11ga

2-3/8" OD x 14ga

2-3/8" OD x 11ga

5" OD x 3/16" (.187)



Square Tubing

Unpainted

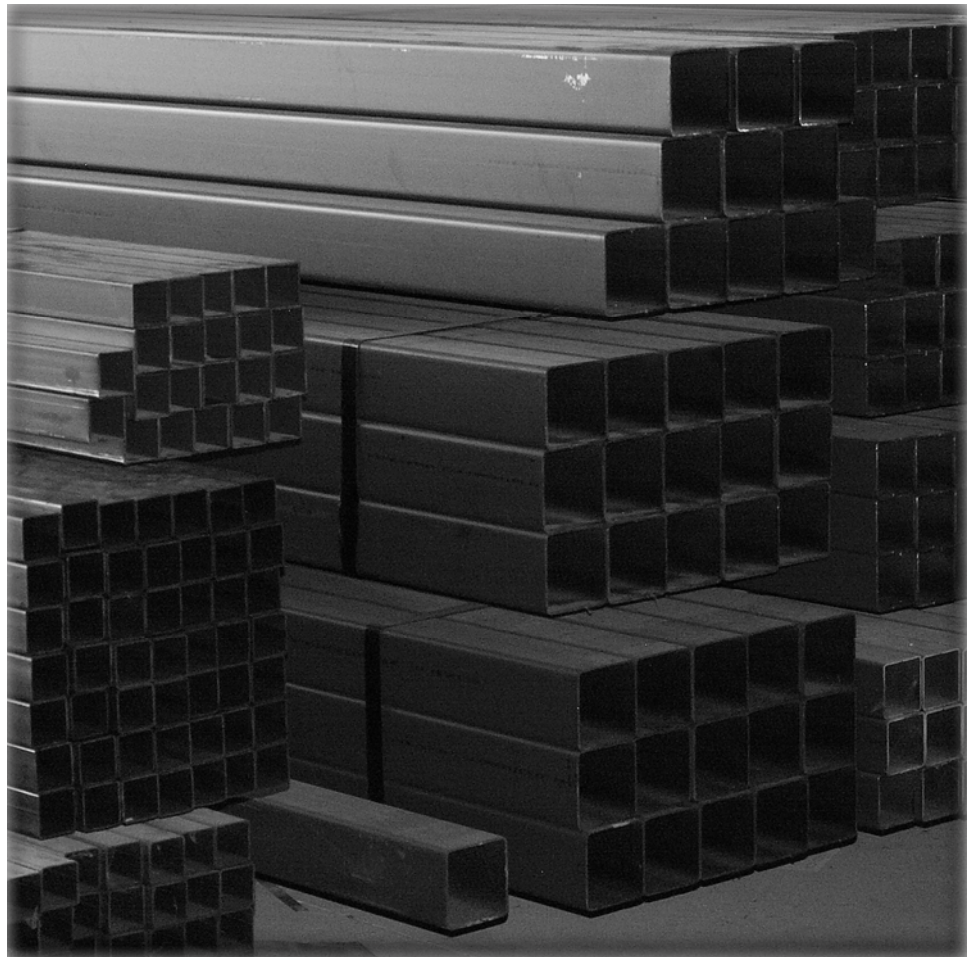
1/2"	x	16ga (.063)
3/4"	x	14ga (.075)
1"	x	16ga (.063)
1"	x	14ga (.075)
1"	x	11ga (.120)
1-1/4"	x	14ga (.075)
1-1/4"	x	11ga (.120)
1-1/2"	x	14ga (.075)
1-1/2"	x	11ga (.120)
1-3/4"	x	14ga (.075)
2"	x	14ga (.075)
2"	x	11ga (.120)
2"	x	3/16" (.188)
2"	x	1/4" (.250)
2-1/2"	x	14ga (.075)
2-1/2"	x	11ga (.120)
2-1/2"	x	3/16" (.188)
2-1/2"	x	1/4" (.250)
3"	x	14ga (.075)
3"	x	11ga (.120)
3"	x	3/16" (.188)
3"	x	1/4" (.250)
3-1/2"	x	3/16" (.188)
3-1/2"	x	1/4" (.250)
4"	x	14ga (.075)
4"	x	11ga (.120)
4"	x	3/16" (.188)
4"	x	1/4" (.250)
4"	x	3/8" (.375)
5"	x	1/4" (.250)
6"	x	3/16" (.188)
6"	x	1/4" (.250)

Galvanized

4"	x	14ga (.075)
4"	x	11ga (.120)

Painted

1/2"	x	16ga (.063)
3/4"	x	14ga (.075)
1"	x	14ga (.075)
1-1/4"	x	14ga (.075)
1-1/2"	x	14ga (.075)
2"	x	14ga (.075)
2"	x	11ga (.120)
2-1/2"	x	14ga (.075)
3"	x	14ga (.075)
3"	x	11ga (.120)
3"	x	3/16" (.188)
4"	x	14ga (.075)
4"	x	11ga (.120)
4"	x	3/16" (.188)



Fencing Components

Structural Pipe 90s

1-5/16" OD
1-5/8" OD
1-7/8" OD
2-3/8" OD
2-7/8" OD
3-1/2" OD
4-1/2" OD
5-1/2" OD
6-5/8" OD

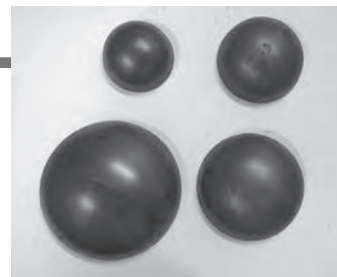


Pipe Caps

1-5/8" OD
1-7/8" OD
2-3/8" OD
2-7/8" OD
3-1/2" OD
4-1/2" OD
5-1/2" OD
6-5/8" OD
8-5/8" OD

Flat Caps

2-3/8" OD
2-7/8" OD



Hinges

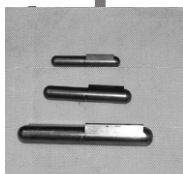
Barrell Hinges

3"
5" (600# cap)
5" J Bolt (600# cap)
7" (900# cap)
7" J Bolt (900# cap)



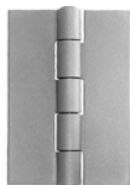
Marr Hinges

3-3/16"
4"
4" W Grease Zerk
4 3/4" W/Grease Zerk



Weld Hinges

2-1/4" x 3-1/2"
3" x 3"
4" x 4"
6" x 6"



Continuous Hinge

2"
3"

Gate Sleeves

2-3/8"
2-7/8"
3-1/2"



Bat Wing Hinges

J Bolt Hinge 3/4" x 12"



Cable Fence

5/16" New Galvanized Cable
500' spools
5/16" Cable Clamps
Cable Wraps
Cable Springs



Welded Wire Panels

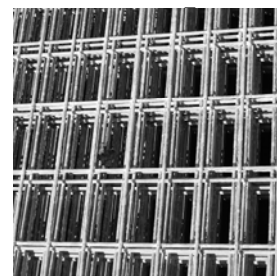
34" x 16' Hog Panel 6ga (6x8 opening)
50" x 16' Cattle Panel 6ga (6x8 opening)
50" x 16' Combination Panel 6ga (6x8 opening)

Utility Panels

4' x 20' x 6ga (4x4 opening) 4' x 12' x 6ga (2x2 opening)
5' x 20' x 6ga (4x4 opening) 5' x 12' x 6ga (2x2 opening)

Horse Panels

4' x 12' x 6ga (2x4 opening)
4' x 20' x 6ga (2x4 opening)
5' x 12' x 6ga (2x4 opening)
5' x 16' x 6ga (2x4 opening)
5' x 20' x 6ga (2x4 opening)
6' x 20' x 6ga (2x4 opening)



Fencing Components

Newell Post Cap or Cap With Ball

Cast Iron

1-1/2"
2"
2-1/2"
3"
4"

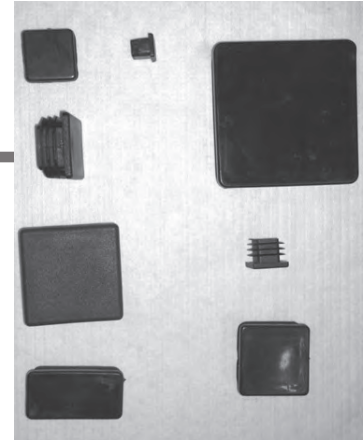
Pressed Steel

2"
3"
4"



Plastic Plugs

1/2 "
3/4 "
1 "
1-1/4 "
1-1/2 "
2 "
3 "
1"x 2 "



Latches

- #1 Mini Spring Latch (Ring) Gal. & Round
- #2 Sm Spring Latch (Ring) Sq. Tube
- #3 Sm Spring Latch W/Pony Shoe
- #4 Lg Spring Latch W/Pony Shoe
- #5 Lg Spring Latch W/Rod Handle
- #6 Slam Latch Bracket Only
- #7 Gravity Latch
- #8 Ornamental Slide Bolt Latch
- #9 Sm Slide Bolt Latch
- #10 Mini Slide Bolt Latch
- #11 Lg Slide Bolt Latch
- #12 5" Lockable Bar Gate Latch
- #13 45 deg Slide Bolt Latch
- #14 Catch for 45 deg Latch



Spears

1/2" Plastic Spear
1/2" & 3/4" Cast Iron Spear
1/2" & 3/4" Cast Iron Spear
With Ball



Slide Gate Components

V Groove Rollers
4" Wheel Box for V
Groove Roller
6" Vertical Gate Roller



Fence Clips

Cable Clips

1/4"
5/16"
3/8"

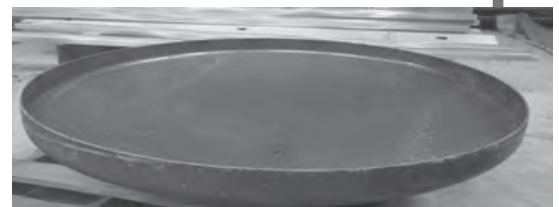


Rod Clips

5/16"

Tank Ends

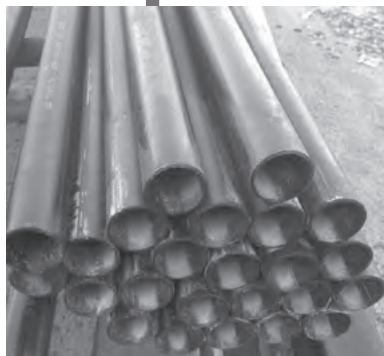
24"
30"
36"
48"



New Black & Galvanized Pipe

Sch. 40 New Black Pipe

1/2" ID (7/8" OD)
 3/4" ID (1-1/16" OD)
 1" ID (1-5/16" OD)
 1-1/4" ID (1-5/8" OD)
 1-1/2" ID (1-7/8" OD)
 2" ID (2-3/8" OD)
 2-1/2" ID (2-7/8" OD)
 3" ID (3-1/2" OD)
 3-1/2" ID (4" OD)
 4" ID (4-1/2" OD)



Sch. 40 New Galvanized Pipe

2" ID (2-3/8" OD) X 21'
 4" ID (4-1/2" OD) X 21'



Sch. 80 New Black Pipe

1" ID (1-5/16" OD)
 2" ID (2-3/8" OD)
 2-1/2" ID (2-7/8" OD)
 3" ID (3-1/2" OD)
 4" ID (4-1/2" OD)



Miscellaneous Fencing

Horse Shoe Cast Steel



12" Gate Closer Spring



Single Lock Box



Double Lock Box



Gate Spring Roller with 3" Swvl. Caster

Weld on Stake Pockets 3-1/2" x 1-5/8" x 8 GA

Stall Tie Down with Horse Shoe



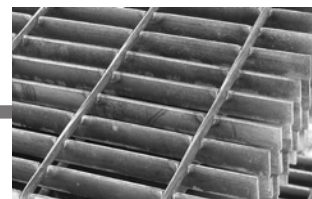
5/8" Weld on "D" Ring



24" Cane Bolt with Brackets



Bar Grating



1/8" X 1" X 2' X 20'
 3/16" X 1" X 2' X 20'
 3/16" X 1-1/2" X 2' X 20'
 3/16" X 1" X 3' X 20' Galvanized Serrated
 3/16" X 1" X 3' X 20' Bare Serrated

Structural Pipe



New Pipe

1-5/16" OD New
 1-5/8" OD New
 1-7/8" OD New
 2-3/8" OD New Sch 40
 2-7/8" OD X 24' New 10Ga
 2-7/8" OD X 32' New 10Ga
 2-7/8" OD X 24' New 3/16"
 2-7/8" OD X 32' New 3/16"
 3-1/2" OD New
 4-1/2" OD New
 5-1/2" OD New
 6-5/8" OD New
 8-5/8" OD New

New Pipe Post

2-3/8" OD X 8' New Strl Grd
 2-7/8" OD X 8' New Strl Grd
 3-1/2" OD X 8' New Strl Grd
 4-1/2" OD X 8' New Strl Grd
 6-5/8" OD X 7' New Strl Grd

Used Pipe

2-3/8" OD X R' Used
 2-7/8" OD X R' Used
 3-1/2" OD X R' Used



Rebar

Grade 40 Rebar

3/8" #3 X 20'

1/2" #4 X 20'

5/8" #5 X 20'

Grade 60 Rebar

3/4" #6 X 20'

3/8" #3 X 12" Hoops

3/8" #3 X 18" Hoops

5/8" #5 2' X 2' Corners

3/4" #6 2'6" x 2'6" Corners

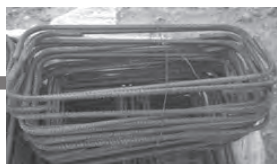
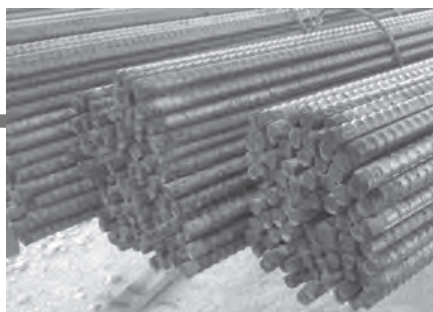
Rebar Ties (5,000 Per Roll)

Rebar Tie Wire

Rebar Chairs (500 Bag)

Black Poly 6 Mil. 20' X 100'

Stirrups 3/8 #3 8" X 18"



Miscellaneous Building Components

1 And 5 Gallon Can Red Oxide Primer

1 Gallon Phos. Acid

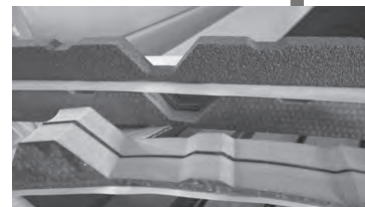
Touch Up Paint (Special Order Only)

Inside RPN Closure

Inside UPN Closure

Outside RPN Closure

Outside UPN Closure



Low Profile Vented R-Pnl Closure

Commercial Corrugated Closure

Expanding Universal Foam Closure

(1" X 1-1/2" X 13')

Tacky Tape (3/32" X 3/8" X 45')

Urethane Sealant

White

Aluminum Grey

Clear



Reinforced Vinyl Insulation

4' X 50'

6' X 50'

6' X 100'

Dektite

Retrofit (Fits 2" To 7-1/4")

#2 (Fits 1-3/4" To 3-1/4")

#3 (Fits 1/4" To 4")

#4 (Fits 3" To 6")

#5 (Fits 4" To 7")

#7 (Fits 6" To 11")

#9 (Fits 10" To 18")



Anchor Bolts

L Bolts With Nuts

1/2" x 8" 3/4" x 18"

5/8" x 12" 7/8" x 18"

3/4" x 12" 1" x 18"



Nelson Studs

3/8" x 4"

1/2" x 4"

1/2" x 6"

1/2" x 8"

5/8" x 8"



Sucker Rods

Used Sucker Rods

3/4" 1"

7/8"

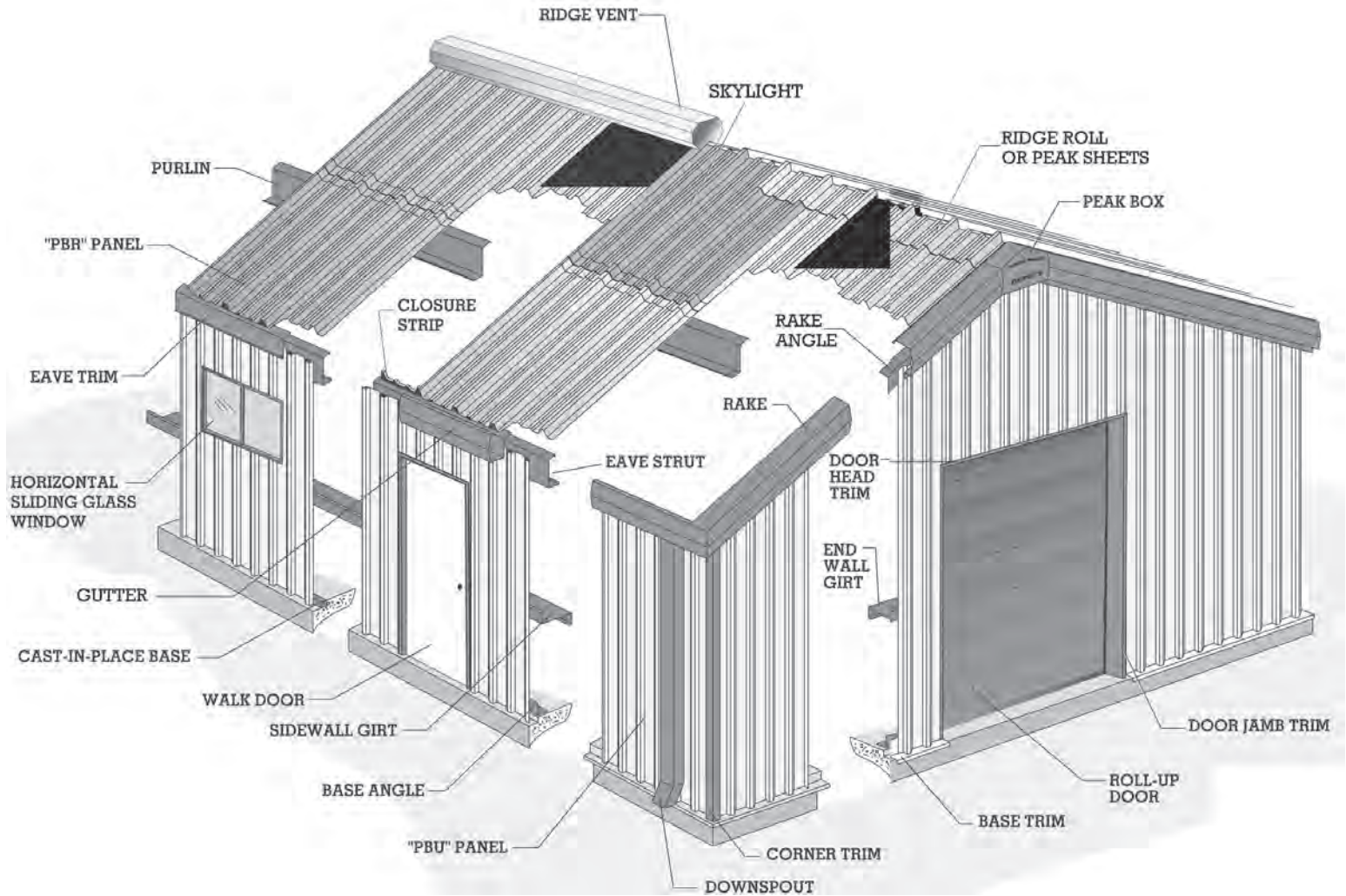


Don't See it in the Catalog?

Call Us

(817) 596-0450 Toll Free (800) 281-7933

Building Components Overview



Building Components Sheets & Trim

Some colors are non-stock items. Extended lead time is required for some profiles. Please verify color, gauge and profile availability. Set-up charges may be required based on quantity and length.

Stock Colors & Lengths

Available In Even Lengths
20 Year Warranty Rpn
White 8' - 24'
Tan 8' - 16'
Light Stone 8' - 20'

25 Year Warranty PBR
Galvalume 8' - 24'

See Color Swatches on
Inside Back Cover

Other Colors Available

20 Year Warranty

- Evergreen
- Brick Red
- Charcoal Gray
- Cocoa Brown
- Hickory Moss
- Ash Gray

40 Year Warranty

- White
- Brite White
- Tan
- Antique Bronze
- Coco Brown
- Hartford Green
- Charcoal Gray

- Gallery Blue
- Light Gray
- Brick Red
- Brite Red
- Light Stone
- Carribbean Blue
- Evergreen

- Hickory Moss
- Ivory
- Ash Gray
- Bright Copper

Color charts available upon request
Custom trims available
Custom sheet lengths available

Building Component Fasteners

7/8" 1/4-14 Lap Tek Screw
(All Colors)
1" 12-14 Tek Screw
(All Colors)
1 1/2" 12-14 Tek Screw
(Galvanized Only)
3" 1/4-14 Tek Screw
(Galvanized Only)



8 X 1/2" K-Lath Drill Screw
(Galvanized Only)
8 X 1/2" K-Lath Sharp Point
(Galvanized Only)



Rivets



1" Wood Grip Screw
(White & Galvanized)
1 1/2" Wood Grip Screw
(All Colors)
2" 9-15 Wood Grip Screw
(White & Galvanized)



2-1/4" 1/4-20 Torx Screw
2-1/2" 5/16-18 Torx Screw
1-13/16" 10-16 Phillips Screw
2-1/4" 12-24 Phillips Screw
3" 12-24 Phillips Screw



Heavy Metal Drillers

1-1/4" 12-24 Hmd W/Washers
(White Or Galvanized)
3" X 1/4 X 28 Hmd
(Galvanized Only)

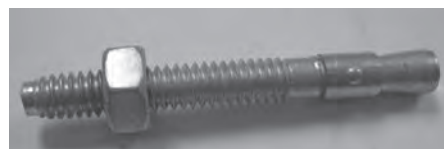


1" 17-14 Oversized Screw
(Galvanized & White)



Wedge Anchors

3/8" X 3-3/4"
1/2" X 3-3/4"
1/2" X 5-1/2"
1/2" X 7"
5/8" X 6"
3/4" X 5-1/2"
3/4" X 7"



Hammer-Set Lead Wedge
Anchors (Box 100)



Magnetic Drive
Sockets (1/4", 5/16", 3/8")



Building Components -

Personnel Doors

3070 X 4"/6"/8" Door Kit Prep For Deadbolt

3070 X 4-1/4"

3070 X 6-1/4"

3070 X 8-1/4"

4070 X 4-1/4"

4070 X 6-1/4"

4070 X 8-1/4"

6070 X 4-1/4"

6070 X 6-1/4"

6070 X 8-1/4"

Heavy Duty Door Lockset

30 Door With 1/2 Gl

Lever lock sets

Panic hardware



Stock-Size Rollup Doors

8' X 8'

10' X 10'

12' X 12'



Sectional Doors and Special Sized Rollup Doors Available
By Special Order

Windows

3' X 3' Window Vertical Slide Double Pane

3' X 3' Window Horizontal Slide

6' X 3' Window Horizontal Slide



Square Sliding Door Track

8' Door Track

10' Door Track

12' Door Track

16' Door Track

20' Door Track

24' Door Track

Door Track Trolleys

Door Track Brackets



10' Ridge Vent (Closeable, Flat Skirt)
In White Or Galvalume

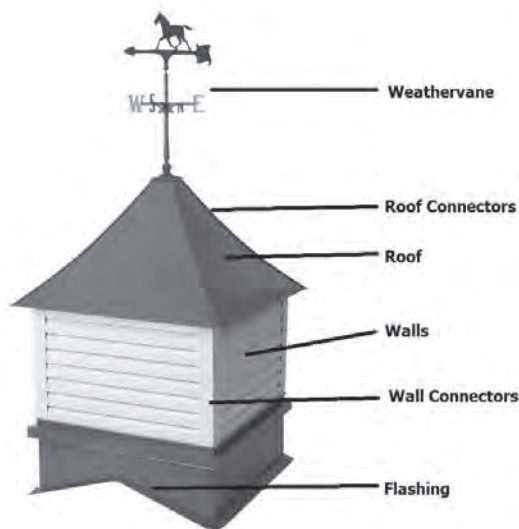


Skylights

12' RPN 80z Fiberglass Skylight

12' RPN Polycarbonate Skylight (White or Clear)

12' UPN Sun Polycarbonate Skylight (White or Clear)

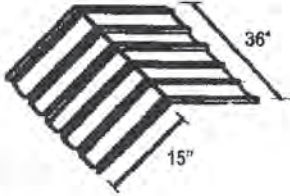


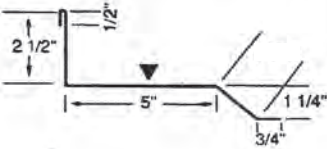
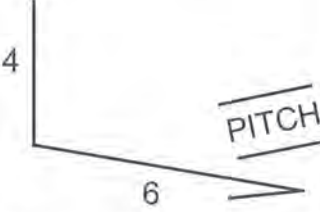
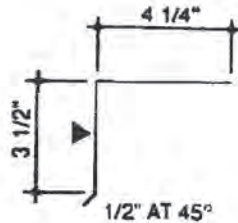


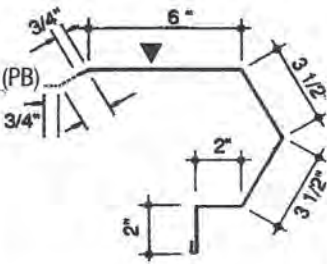
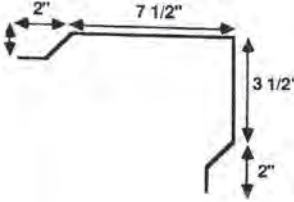
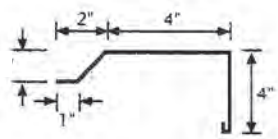
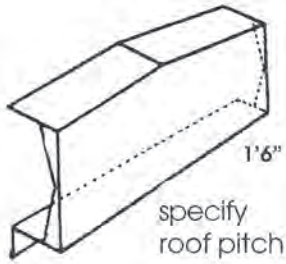
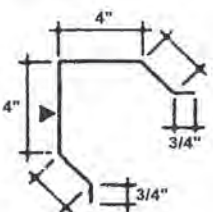
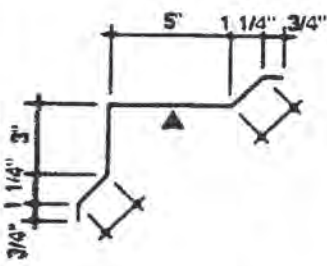
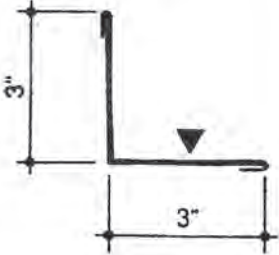

Cupola With Weathervane (Special Order, Specify Color For
All Parts & Weather Vane)

24", 36" & 48" Sizes

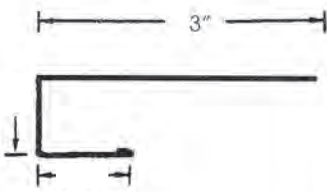
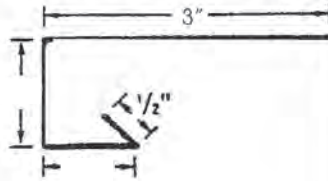
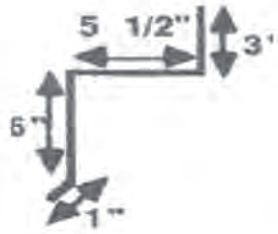
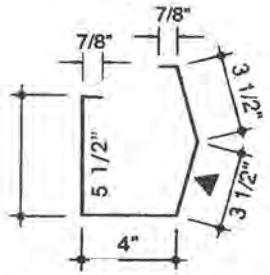

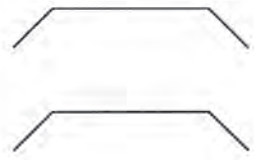
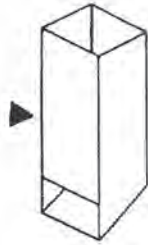
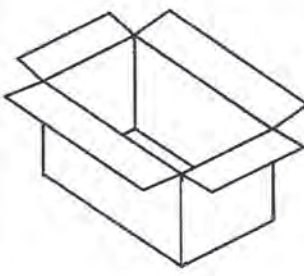

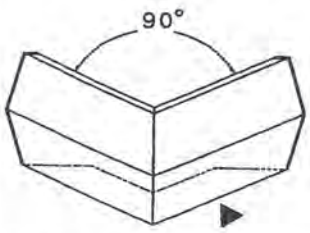
Specify Roof Pitch

Building Components - Trim Examples

<p>PEAK SHEET</p>  <p>specify roof pitch</p>	<p>STANDARD RIDGE ROLL PRO#0200</p>  <p>specify roof pitch</p>	<p>FLAT RIDGEROLL T-1</p>  <p>specify roof pitch</p>
<p>TRANSITION TRIM RPN T-28</p> 	<p>TRANSITION TRIM 4 X 6</p> 	<p>EAVE TRIM T-13</p>  <p>specify roof pitch</p>

<p>SCULPTURED RAKE T-2 PB</p> 	<p>5 1/2 X 9 1/2 RAKE TRIM RPN PRO #0110 UPN PRO #0210</p> 	<p>HOUSE ROOF RAKE RPN T-45 UPN T-47</p> 	<p>FIXED PEAK BOX T-3A</p>  <p>specify roof pitch</p>
<p>OUTSIDE CORNER RPN PRO#0160 UPN PRO#0150</p> 	<p>INSIDE CORNER RPN T-15, UPN T-20</p> 	<p>3 X 3 INSIDE ANGLE T-23</p> 	<p>OUTSIDE ANGLE 2X2 T-24, 4X4 T-40 6X6 PRO#0706</p> 

Building Components - Trim Examples

<p>HEAD TRIM RPN PRO#0300 UPN PRO#0320</p> 	<p>JAMB RPN PRO#0350 UPN PRO#0360</p> 	<p>DOOR TRACK COVER PRO#0420</p> 
<p>POST-HUNG GUTTER T-5A</p>  <p>specify roof pitch</p>	<p>GUTTER END CAP T-7</p> 	<p>GUTTER STRAP T-6 T-6A</p> 
<p>3 1/2" X 4" DOWNSPOUT WITH KICKOUT T-9</p> 	<p>DOWNSPOUT SLEEVE T-8</p> 	<p>DOWNSPOUT STRAP T-8A</p> 
<p>CORNER BOX T-4A</p>  <p>specify roof pitch</p>		

Color Swatches



Brite White 824



White 899



Ivory 883



Light Stone 887



Tan 855



Hickory Moss 870



Cocoa Brown 856



Antique Bronze 854



Light Gray 889



Charcoal Gray 851



Ash Gray 848



Caribbean Blue 881



Gallery Blue 826



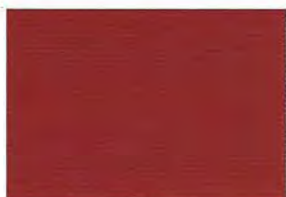
Evergreen 875



Hartford Green 821

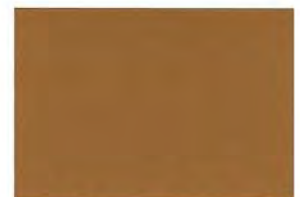


Brick Red 898



Brite Red 845

Introducing New
Kynar Color:



Bright Copper S25

Colors shown are as close to actual colors as allowed by the printing process.
Actual metal samples are available upon request.

PHILLIPS WELDING SUPPLY

Steel Building Components • Steel & Pipe Sales



Phillips Welding Supply, Inc.
Steel & Pipe Sales
1822 Fort Worth Highway
Weatherford, TX 76086

(817) 596-0450 Fax (817) 596-0742 Toll Free (800) 281-7933
sales@phillipsweldingsupply.com



Product
Examples - Let
Us Help You
Build Your
Dream

Products & Services:
Welding Equipment & Supplies
Steel & Pipe Sales, Steel Building Components

Hours of Operation:
Monday-Friday 8:00 a.m. - 5:00 p.m.
Saturday 8:00 a.m. - 12:00 p.m.

Payment Options:
MasterCard, VISA, Discover, American Express

