

# MAXXIS®

# RAZR

## Untame your 4x4

Born from a long history of off-road and racing technology, the Razrs are born explorers, built to take you further than you ever thought possible. Over and over again.

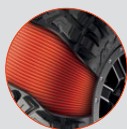
With the Razrs on your side, you'll unlock adventure and make the most of your 4x4.

### RAZR MT MT772



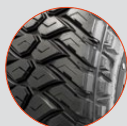
#### The Explorer. Untamed.

Off-Road racing blood mixes with boundary-pushing technology to create the Armour Ply, a virtually impenetrable shield for extreme durability that matches the Razr's thirst for mud, rock, grit and dirt.



##### Double Defences

The Armour Ply combines with Debris-Shield wrap-around tread blocks, creating a barrier to prevent damage to the tread and sidewalls.



##### Stealth Mode

Quieter than you'd ever expect from a mud tyre, you'll be impressed by how much the Razr MT suppresses sound for quieter road work.



##### Ultra Durable

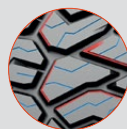
Super damage-resistant chemical fillers in the tread compound resist cutting, tearing and chunking.

### RAZR AT AT811



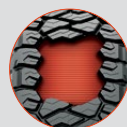
#### Go on the attack. Anywhere.

Don't be fooled by the way it hugs the highway, the RAZR AT is just waiting for you to turn off the tarmac and is capable of scaring even seasoned 4x4 enthusiasts with its ability.



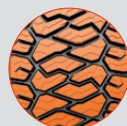
##### Smooth & Stable

Stepped tread block chamfers for smoother on-road running and stable braking under force.



##### Snarls Off-Road

Multi-angled tread sipes for extra biting edges offroad. Reinforced sidewalls with wrap-around Debris-Shield blocks for extra damage resistance.



##### Reinforced Rubber

Take confidence from a layer of muscle-flexing toughness that resists cutting, tearing and chunking.



**RAZR AT-S**

# AT781



## Legend. For work and play.

Enjoy a smooth week at work and a wild weekend at play. This legend makes both possible and will take you from the office to the back blocks with ease.



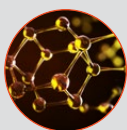
### For Quieter Days

Let the tread pitch arrangement optimisation technology silence the hum of the road.



### For Safer Days

Saw-toothed circumferential grooves add lightening lateral grooves for fast water dispersal and dependable traction.



### For More Days

A new generation polymer and reinforced carbon back nanoparticles increase the tread life and KM count.

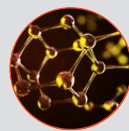
**RAZR HT**

# HT780



## Say hello to the Highwayman.

This rebel for the road is loaded with a toughness that defies convention for a tyre that's always one step ahead.



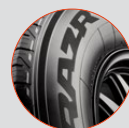
### Extra Long Lasting

Highly-reinforced silica nanoparticles grip while resisting wear and tear for increased longevity.



### Silent Running

Featuring Maxxis Optim-Tech acoustic technology to dampen and cancel out road noise during high-speed driving.



### Increased Stability

Drive confidently in wet, windy conditions with a flexible, shock-absorbing sidewall for smoother control.

# MAXXIS®

## MAXXIS® VS6



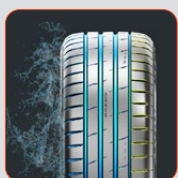
### Don't hold your horses. Unleash them.

The perfect pairing of precision and power: the Ultra High Performance Maxxis VS6 reacts to deliver instant control and grip.



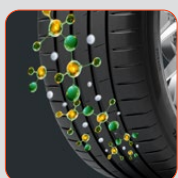
#### Unrivalled Control

A wide and flat tread profile boosts the contact patch for maximum grip and performance on the road.



#### Ultimate Safety

The 3+1 wide circumferential groove configuration ensures rapid water drainage to prevent aquaplaning.



#### Extended Tyre Life

The nylon and aramid Performance Ply delivers razor-sharp response as well as extra strength-to-weight performance.

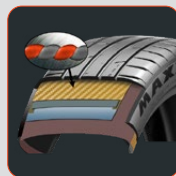
# MAXXIS®

## VS6 SUV



### For what matters most.

The safety-obsessed SUV tyre maximises the tyre contact area so even when it feels like life is pulling you in all directions, it keeps you grounded with an outstanding ability to cling to the road.



#### Reassuring Control

A special blend of nylon and aramid under the tread delivers pinpoint precision for confident driving.



#### Consistent Traction

The wide, even contact patch and 3+1 wide circumferential grooves add grip in the wettest conditions.



#### Driving Silence

Optim-Tech simulation technology enables a tread design optimised to cancel out road noise and cabin frequencies.

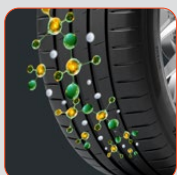


## MAXXIS® VS-EV



### Experience a power surge.

The Maxxis Victra Sport EV is engineered to lower rolling resistance, reduce noise, and enhance durability and traction for electric vehicles.



#### Travel Further

An EV-optimised tread compound includes blended polymers for a compound that improves rolling resistance while increasing mileage.



#### Travel Safer

Lightning tread sipes help to clear water and maintain surface grip; while deep tread grooves improve wet road grip through the life of the tyre.



#### Travel Quieter

Maxxis Silent Technology absorbs road noise, while the closed shoulder design helps to block noise from escaping to the cabin.

## MAXXIS® MCV5



### Works harder and smarter.

The MCV5 is a very clever workhorse, setting a benchmark in endurance for hard work and handling heavy loads, providing the very best value for money.



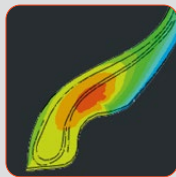
#### Delivering Stability

Variable depth sipes provide aquaplaning resistance and help to reduce pattern noise.



#### Delivering in the Wet

Continuous 3D wave circumferential grooves for an optimal wet weather performance.



#### Delivering Longevity

Advanced Bead construction technology distributes structural stress for a class-leading tyre life.