

THE
**COOPER
CHRONICLES**

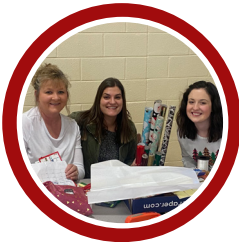
MARCH 2022
Q2 - 2021/22 FY



INSIDE THIS ISSUE
DECEMBER 2021 - FEBRUARY 2022



PROJECTS & SHOP UPDATES:
Acknowledging the projects we've successfully completed along with the ones we've been awarded.



EVENTS & COMMUNITY:
Recap of recent company events and community involvement.



COOPER CORNER:
Employee accomplishments & extra information to keep you in the know.

**BUILDING
STRONG NOW TO
STAND STRONG TOMORROW**

At Cooper, we know that strong partnerships are key to success. Our team is devoted to actively seeking ways to continually improve upon our processes and sharing what we learn with our partners. In an industry that is constantly evolving, you can always count on our consistent commitment to do the right thing.



PROJECT PROGRESS



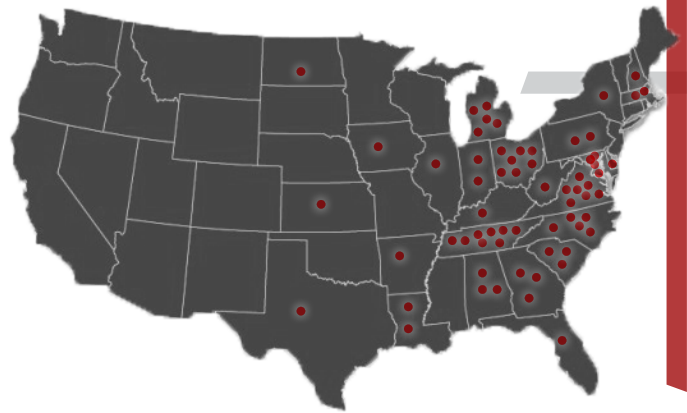
HOLLY RITTENBERRY
VP, Corporate Risk

“ Our Corporate Risk, Legal and Safety teams all collaborate when making necessary decisions as the depth of knowledge each brings to the decision-making table is invaluable. The commitment, pride, and gratitude I feel for being part of the Corporate Risk team and the Cooper Steel family drives me to continue to learn and lead by example everyday. ”

CORPORATE RISK TEAM

It is the duty of the Corporate Risk team to assess, understand and mitigate risk to safeguard both our company's and clients' reputations and potential for future growth. We are committed to ensuring that we are bringing our best to each project we are awarded.

WHERE YOU CAN FIND US



26
STATES

64
CITIES

MEET OUR CORPORATE RISK TEAM:



BAILEY DICKENS
Risk Management Administrator



RENAE BURDICK
Compliance Administrative Support



BETH HARVEY
Subcontract Administrator

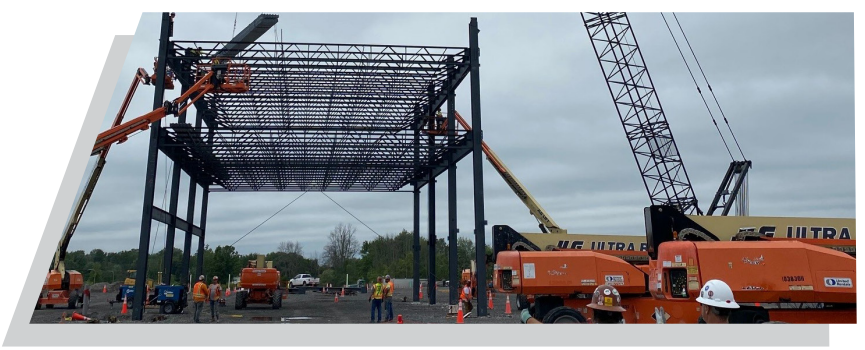


KIM HILLIARD
Licensing Specialist

58
COMBINED YEARS OF EMPLOYMENT AT COOPER

PROJECT HIGHLIGHT

As our industry faces challenges such as trucking shortages and increased steel prices, we must all make adjustments to keep our projects moving forward. This project in Rochester, NY combined those factors with winter weather and presented quite the challenge for all involved. It was evident from the beginning that our response under pressure would be critical to the success of the job. The team worked tirelessly to ensure that Cooper delivered on its promises and the result was once again a successful project of which we were proud to be a part.



20
WEEKS

11,800
TONS

2.8M
SQ FT

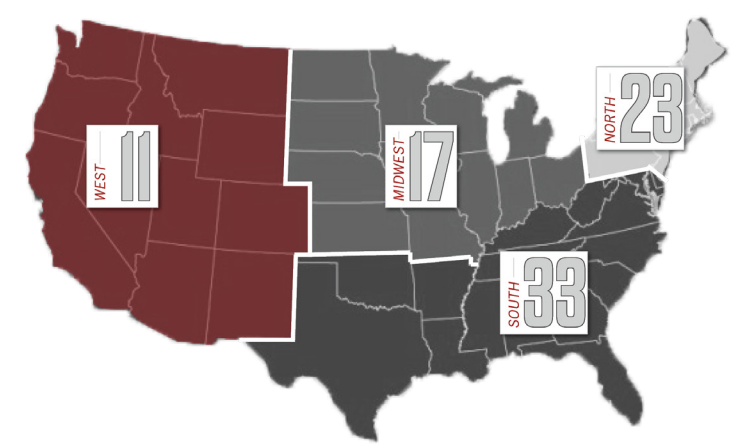
COMPLIANCE & RISK MANAGEMENT PRACTICES:

Each of these tasks are conducted for both Cooper Steel and our subcontractors-



** Indicates at both the pre-bid and job specific levels.

PREQUALIFIED SUBCONTRACTORS BY REGION:



STEEL CONSTRUCTION UPDATES

STEEL PRICES

BEAMS	After being steady for the last 6-months, beams are making a slight increase this week mainly due to an increase in scrap prices. Beam mills have a healthy backlog, but availability is stable.
TUBES	As always, HSS Tubing has been the most volatile product in the last six months. The price had dropped six times since September 2021 for a total of 27%, but has increased 8% in the last month. As we discussed in previous updates, tubing is manufactured from coil steel which is used by many products around the world and is subject to high volatility.
CHANNELS + ANGLES	Channels and angles have been relatively stable, increasing slightly this week due to increased scrap prices.
PLATE	Plate has been stable for the last 6-months with lead times decreasing to near-normal levels. There has been a slight increase this week due to scrap prices. Demand remains high for plate products.

SUPPLY CHAIN

FUEL	Fuel prices have climbed dramatically in the last few weeks. Most suppliers are quick to pass on increased trucking costs to consumers, as we have seen in all material supply chains.
PAINT RESINS	A current world shortage of paint resin has caused many paint manufacturers to reduce production levels. Resin is the building block of almost all paints, especially shop coat primers as used by the steel industry. Our projects are currently OK, but if the shortage is not rectified, it could become an industry-wide problem in the very near future.
PARTS	Various parts for machines, vehicles, and products are experiencing shortages due to the effects of Covid-19 on labor supply. Hopefully, this problem will be in our rear-view mirror in the near future.

STEEL FABRICATORS

The national average backlog for steel fabricators is at 23.6 weeks, an all time high. The Southeast Region has the longest backlog of 29 weeks, followed by the Mid-Atlantic at 27 weeks.

RESEARCH

Industry changing research projects are being conducted by the AISC (American Institute of Steel Construction). You may have seen in the news the first two high-rise office towers built with a steel core in lieu of the traditional concrete. This innovation is a game-changer as it reduces the problematic concrete to steel interfaces and speeds up construction. A steel floor system eliminating the need for concrete altogether is also in the research phase. Stay tuned for updates on these and other steel construction research projects.



DUFF ZIMMERMAN
PRESIDENT

COOPER CORNER

STAY IN THE KNOW

A Time To Reflect + Community Involvement

Giving Tuesday

In celebration of 'Giving Tuesday' Cooper Steel donated to Homes of Hope of Bedford County, Inc. which is an organization of families helping families recover from crisis by providing safe homes for children. Their vision is to leave each life they encounter better than they found it!



12 Days of Giving

This Christmas season we organized a '12 Days of Giving' campaign throughout our company and communities. In 12 consecutive days, we gave to 12 different charities that are close to home. The employees within our Cooper Family made monetary and item donations to organizations that are reaching those who need it most. In a season of gratitude, we are proud to play a positive role in impacting our communities!

1- CASCADE MIDDLE SCHOOL

CHILI SUPPER VOLUNTEERS



FIRST CHOICE PREGNANCY CENTER-2

10 BOXES OF DIAPERS & 6 SHELVING UNITS



3- THE CARE HOUSE

100 STUFFED ANIMALS



4- BEDFORD CANCER FOUNDATION

\$1,000 CHECK



NEW DESTINY DOG RESCUE-5

11 - 45LB BAGS & 7 - 4LB BAGS OF DOG FOOD



6- TOYS 4 TOTS

\$500 CHECK & \$750 WORTH OF TOYS



7- BEST BUDDIES OF TN

\$1,000 CHECK



NURSES FOR NEWBORNS OF TN-8

\$1,500 CHECK & DIAPERS/TOYS/BABY CLOTHING



9- NASHVILLE RESCUE MISSION

\$1,000 CHECK



10- EASTSIDE ELEMENTARY SCHOOL

BEE BUCK STORE VOLUNTEERS



11- IMAGINATION LIBRARY OF BEDFORD COUNTY

\$1,000 CHECK & 30 BOOKS



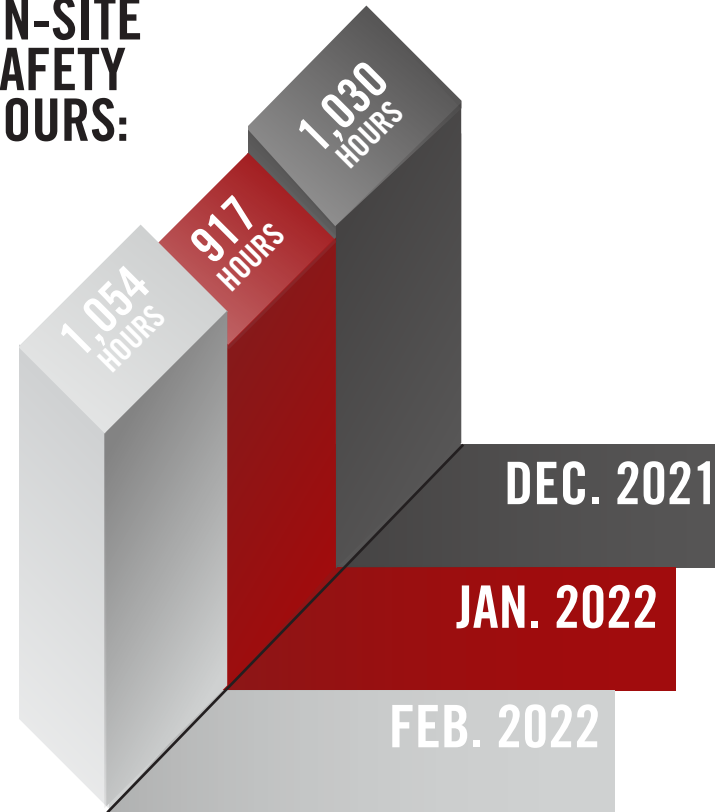
12- VANDERBILT CHILDREN'S HOSPITAL

\$700 WORTH OF TOYS



SAFETY SPOTLIGHT

TOTAL ON-SITE SAFETY HOURS:



ON-SITE SAFETY:



ROCHESTER, NY



BRISTOL, IN

OUR COMMITMENT TO SAFETY GOES FAR BEYOND OUR SAFETY DEPARTMENT

In addition to our full-time employees within the safety department, we have safety committees made of employees in other areas of our company who are continuously looking for ways to make the job safer for their co-workers. They perform safety audits weekly and bring any concerns to the safety managers for discussion. They also meet monthly at each facility and in the field to discuss safety concerns with the safety and production management teams.





COOPER STEEL

BUILD STRONG. STAND STRONG.

COOPER STEEL

SHELBYVILLE OFFICE & SHOP
503 N. Hillcrest Dr.
Shelbyville, TN 37160
(931) 684-7962

COOPER STEEL SOUTH, LLC

ALABAMA SHOP
809 First Rd.
Childersburg, AL 35044
(256) 346-9003

COOPER STEEL

NASHVILLE OFFICE
1919 Hayes St.
Nashville, TN 37203
(615) 321-5222

COOPER STEEL OF VIRGINIA, LLC

VIRGINIA SHOP
275 Francis Ave.
Monroe, VA 24574
(434) 319-5600

COOPER STEEL

KENTUCKY OFFICE
600 Meijer Dr., Suite 303
Florence, KY 41042
(859) 980-0180