



St. Anthony School

Bear Facts



January 28, 2026



Prayer



Heavenly Father,
We thank You that the storm has passed and for keeping us safe through
the freezing winds and heavy snow.

We lift up those who are still without power or heat,
bring them warmth and comfort.

We pray for the restoration of essential services and protection for the
linemen, road crews, and first responders working to mend the damage.
As we clear the snow, remind us of Your presence in the quiet aftermath
and help us to support our neighbors in need.

We trust in Your care and mercy.

In Jesus' name,
Amen



Mark Your Calendars

Catholic Schools Week
January 26-January 30

Open House
February 1

Reverse Raffle
February 7

All School Rosary
February 12, 2:00 PM

Valentine's Day Parties
February 13

Stewardship Friday
February 13

Daddy/Daughter Dance
February 13

President's Day
February 16

Ash Wednesday
February 18



Important Information



Catholic Schools Week

Due to the winter storm, we missed part of our Catholic Schools Week celebrations. While the winter weather changed our plans, it did not change our spirit! We will continue to celebrate Catholic Schools Week and will make up the activities and events we missed in the coming days.

We will move the days that we missed to next week. On Monday, we will celebrate our community. Students may be out of uniform if they bring in a \$1 donation for St. Elizabeth Charities. On Tuesday, we will celebrate our students. Students may wear comfy clothes on this day and will receive a special treat at lunch. On Wednesday, the students will be in uniform.

Thank you for your flexibility and support as we continue to celebrate our students, staff, and the many blessings of our school community.

2026-2027 PRE-REGISTRATION FORM

Because our Open House was rescheduled for Sunday, February 1, I have extended the deadline for the Pre-Registration Fee. The \$75 Pre-Registration Fee is now due by Friday, January 30. After January 30th, the Pre-Registration fee will increase to \$100. The registration fee is non-refundable. We will also begin to accept new students after our Open House this weekend.

[Click Here To Register](#)



2026-2027 School Calendar

The 2026-2027 school calendar is included the Bear Fact's today. Please review the calendar and make sure to plan vacations accordingly.

Reverse Raffle - Saturday, February 7

Our Reverse Raffle is quickly approaching and we need your help to make this a success! This is our biggest fundraiser of the year for St. Anthony School. Our theme this year is Under the Sea. We have Stumler's Catering preparing a delicious dinner and desert. This is an adult evening filled with lots of laughter, prizes, and fellowship. Because this is a school fundraiser, we want **YOU** to be a part of the fun. Here are some ways you can make this night a success. The order form is attached to this email. **Deadline for order forms is Friday, January 30, so we can get a confirmation number to our Caterer.**

We are sold out of the \$10 and \$25 tickets, but we still have the \$50 tickets.

- Come to the event! The more people we have at the event, the more successful it will be. We have plenty of tables and seats! This is also great opportunity to meet fellow parents and parishioners in our school community.
- Invite friends and family to the event!
- If you can't attend, buy raffle tickets. Ask family and friends to buy tickets. You do not have to be present to win cash prizes.

We also need your help with some donations. We would like the the following grade levels to donate these items. Please send these to school by Friday, January 30. If you are not able to send in items but want to help, you can send in a donation and we will purchase the items. Please make sure to send the donation in a envelope marked Reverse Raffle Donation.

- **Preschool** - 2 Liters (Coke, Diet Coke, Sprite)
- **Kindergarten, 1st, 2nd, 3rd, 4th** - Gift Cards: Gifts cards can be any amount from shopping, restaurants, etc.
- **5th, 6th, 7th, 8th** - Scratch Off Lottery Tickets: any amount

Reverse Raffle Donations Needed!

SAS families we need your help with the Raffle. We are looking for donations from local businesses. If you own a business or know someone that does, we would love a donation from that business. The donation can be gift cards or items from the business. A business can also be a corporate sponsor by donating money to the event. Please contact Mrs.Tucker if you know a business that may be willing to donate.



St. Anthony School is opening its doors for our annual Open House, and we would love to welcome your family to campus.

Event Details



When: Sunday, February 1



Time: 11:00 AM – 2:00 PM



Where: 320 N. Sherwood Ave. Clarksville, IN 47129

What to Expect

Personal Tours: Explore our classrooms, get answers to your questions regarding admissions, tuition assistance, and "Life as a Bear."

Meet the Faculty: Chat with our dedicated teachers about their classroom.

Curriculum Overview: Learn about our academic standards, faith-based learning, and extracurricular programs.

Whether you are looking for a Preschool, Elementary, or Middle School home, come see how we empower our students to lead, learn, and serve.

No RSVP is required. Can't make it? Click here to request more info: www.stap.us

We can't wait to show you what Bear Nation is all about!



St. Anthony School

2026 - 2027 School Calendar

| August '26 | | | | | | |
|------------|----|----|----|----|----|----|
| Su | M | Tu | W | Th | F | S |
| | | | | | | 1 |
| 2 | 3 | 4 | 5 | 6 | 7 | 8 |
| 9 | 10 | 11 | 12 | 13 | 14 | 15 |
| 16 | 17 | 18 | 19 | 20 | 21 | 22 |
| 23 | 24 | 25 | 26 | 27 | 28 | 29 |
| 30 | 31 | | | | | |

| September '26 | | | | | | |
|---------------|----|----|----|----|----|----|
| Su | M | Tu | W | Th | F | S |
| | | 1 | 2 | 3 | 4 | 5 |
| 6 | 7 | 8 | 9 | 10 | 11 | 12 |
| 13 | 14 | 15 | 16 | 17 | 18 | 19 |
| 20 | 21 | 22 | 23 | 24 | 25 | 26 |
| 27 | 28 | 29 | 30 | | | |

| October '26 | | | | | | |
|-------------|----|----|----|----|----|----|
| Su | M | Tu | W | Th | F | S |
| | | | | 1 | 2 | 3 |
| 4 | 5 | 6 | 7 | 8 | 9 | 10 |
| 11 | 12 | 13 | 14 | 15 | 16 | 17 |
| 18 | 19 | 20 | 21 | 22 | 23 | 24 |
| 25 | 26 | 27 | 28 | 29 | 30 | 31 |

| November '26 | | | | | | |
|--------------|----|----|----|----|----|----|
| Su | M | Tu | W | Th | F | S |
| 1 | 2 | 3 | 4 | 5 | 6 | 7 |
| 8 | 9 | 10 | 11 | 12 | 13 | 14 |
| 15 | 16 | 17 | 18 | 19 | 20 | 21 |
| 22 | 23 | 24 | 25 | 26 | 27 | 28 |
| 29 | 30 | | | | | |

| December '26 | | | | | | |
|--------------|----|----|----|----|----|----|
| Su | M | Tu | W | Th | F | S |
| | | 1 | 2 | 3 | 4 | 5 |
| 6 | 7 | 8 | 9 | 10 | 11 | 12 |
| 13 | 14 | 15 | 16 | 17 | 18 | 19 |
| 20 | 21 | 22 | 23 | 24 | 25 | 26 |
| 27 | 28 | 29 | 30 | 31 | | |

| January '27 | | | | | | |
|-------------|----|----|----|----|----|----|
| Su | M | Tu | W | Th | F | S |
| | | | | | 1 | 2 |
| 3 | 4 | 5 | 6 | 7 | 8 | 9 |
| 10 | 11 | 12 | 13 | 14 | 15 | 16 |
| 17 | 18 | 19 | 20 | 21 | 22 | 23 |
| 24 | 25 | 26 | 27 | 28 | 29 | 30 |
| 31 | | | | | | |

| February '27 | | | | | | |
|--------------|----|----|----|----|----|----|
| Su | M | Tu | W | Th | F | S |
| | 1 | 2 | 3 | 4 | 5 | 6 |
| 7 | 8 | 9 | 10 | 11 | 12 | 13 |
| 14 | 15 | 16 | 17 | 18 | 19 | 20 |
| 21 | 22 | 23 | 24 | 25 | 26 | 27 |
| 28 | | | | | | |

| March '27 | | | | | | |
|-----------|----|----|----|----|----|----|
| Su | M | Tu | W | Th | F | S |
| | 1 | 2 | 3 | 4 | 5 | 6 |
| 7 | 8 | 9 | 10 | 11 | 12 | 13 |
| 14 | 15 | 16 | 17 | 18 | 19 | 20 |
| 21 | 22 | 23 | 24 | 25 | 26 | 27 |
| 28 | 29 | 30 | 31 | | | |

| April '27 | | | | | | |
|-----------|----|----|----|----|----|----|
| Su | M | Tu | W | Th | F | S |
| | | | | 1 | 2 | 3 |
| 4 | 5 | 6 | 7 | 8 | 9 | 10 |
| 11 | 12 | 13 | 14 | 15 | 16 | 17 |
| 18 | 19 | 20 | 21 | 22 | 23 | 24 |
| 25 | 26 | 27 | 28 | 29 | 30 | |

| May '27 | | | | | | |
|---------|----|----|----|----|----|----|
| Su | M | Tu | W | Th | F | S |
| | | | | | | 1 |
| 2 | 3 | 4 | 5 | 6 | 7 | 8 |
| 9 | 10 | 11 | 12 | 13 | 14 | 15 |
| 16 | 17 | 18 | 19 | 20 | 21 | 22 |
| 23 | 24 | 25 | 26 | 27 | 28 | 29 |
| 30 | 31 | | | | | |

| June '27 | | | | | | |
|----------|----|----|----|----|----|----|
| Su | M | Tu | W | Th | F | S |
| | | 1 | 2 | 3 | 4 | 5 |
| 6 | 7 | 8 | 9 | 10 | 11 | 12 |
| 13 | 14 | 15 | 16 | 17 | 18 | 19 |
| 20 | 21 | 22 | 23 | 24 | 25 | 26 |
| 27 | 28 | 29 | 30 | | | |

| July '27 | | | | | | |
|----------|----|----|----|----|----|----|
| Su | M | Tu | W | Th | F | S |
| | | | | 1 | 2 | 3 |
| 4 | 5 | 6 | 7 | 8 | 9 | 10 |
| 11 | 12 | 13 | 14 | 15 | 16 | 17 |
| 18 | 19 | 20 | 21 | 22 | 23 | 24 |
| 25 | 26 | 27 | 28 | 29 | 30 | 31 |



School Closed/ Holidays



First and Last Day of School



Early Dismissal 1:00

Escuela San Antonio

Calendario Escolar 2026 - 2027

| Agostos 2026 | | | | | | |
|--------------|----|----|----|----|----|----|
| Su | M | Tu | W | Th | F | S |
| | | | | | | 1 |
| 2 | 3 | 4 | 5 | 6 | 7 | 8 |
| 9 | 10 | 11 | 12 | 13 | 14 | 15 |
| 16 | 17 | 18 | 19 | 20 | 21 | 22 |
| 23 | 24 | 25 | 26 | 27 | 28 | 29 |
| 30 | 31 | | | | | |

| Septiembre 2026 | | | | | | |
|-----------------|----|----|----|----|----|----|
| Su | M | Tu | W | Th | F | S |
| | | 1 | 2 | 3 | 4 | 5 |
| 6 | 7 | 8 | 9 | 10 | 11 | 12 |
| 13 | 14 | 15 | 16 | 17 | 18 | 19 |
| 20 | 21 | 22 | 23 | 24 | 25 | 26 |
| 27 | 28 | 29 | 30 | | | |
| | | | | | | |

| Octubre 2026 | | | | | | |
|--------------|----|----|----|----|----|----|
| Su | M | Tu | W | Th | F | S |
| | | | | 1 | 2 | 3 |
| 4 | 5 | 6 | 7 | 8 | 9 | 10 |
| 11 | 12 | 13 | 14 | 15 | 16 | 17 |
| 18 | 19 | 20 | 21 | 22 | 23 | 24 |
| 25 | 26 | 27 | 28 | 29 | 30 | 31 |
| | | | | | | |

| Noviembre 2026 | | | | | | |
|----------------|----|----|----|----|----|----|
| Su | M | Tu | W | Th | F | S |
| 1 | 2 | 3 | 4 | 5 | 6 | 7 |
| 8 | 9 | 10 | 11 | 12 | 13 | 14 |
| 15 | 16 | 17 | 18 | 19 | 20 | 21 |
| 22 | 23 | 24 | 25 | 26 | 27 | 28 |
| 29 | 30 | | | | | |
| | | | | | | |

| Diciembre 2026 | | | | | | |
|----------------|----|----|----|----|----|----|
| Su | M | Tu | W | Th | F | S |
| | | 1 | 2 | 3 | 4 | 5 |
| 6 | 7 | 8 | 9 | 10 | 11 | 12 |
| 13 | 14 | 15 | 16 | 17 | 18 | 19 |
| 20 | 21 | 22 | 23 | 24 | 25 | 26 |
| 27 | 28 | 29 | 30 | 31 | | |
| | | | | | | |

| Enero 2027 | | | | | | |
|------------|----|----|----|----|----|----|
| Su | M | Tu | W | Th | F | S |
| | | | | | 1 | 2 |
| 3 | 4 | 5 | 6 | 7 | 8 | 9 |
| 10 | 11 | 12 | 13 | 14 | 15 | 16 |
| 17 | 18 | 19 | 20 | 21 | 22 | 23 |
| 24 | 25 | 26 | 27 | 28 | 29 | 30 |
| 31 | | | | | | |

| Febrero 2027 | | | | | | |
|--------------|----|----|----|----|----|----|
| Su | M | Tu | W | Th | F | S |
| | 1 | 2 | 3 | 4 | 5 | 6 |
| 7 | 8 | 9 | 10 | 11 | 12 | 13 |
| 14 | 15 | 16 | 17 | 18 | 19 | 20 |
| 21 | 22 | 23 | 24 | 25 | 26 | 27 |
| 28 | | | | | | |
| | | | | | | |

| Marzo 2027 | | | | | | |
|------------|----|----|----|----|----|----|
| Su | M | Tu | W | Th | F | S |
| | 1 | 2 | 3 | 4 | 5 | 6 |
| 7 | 8 | 9 | 10 | 11 | 12 | 13 |
| 14 | 15 | 16 | 17 | 18 | 19 | 20 |
| 21 | 22 | 23 | 24 | 25 | 26 | 27 |
| 28 | 29 | 30 | 31 | | | |
| | | | | | | |

| Abril 2027 | | | | | | |
|------------|----|----|----|----|----|----|
| Su | M | Tu | W | Th | F | S |
| | | | | 1 | 2 | 3 |
| 4 | 5 | 6 | 7 | 8 | 9 | 10 |
| 11 | 12 | 13 | 14 | 15 | 16 | 17 |
| 18 | 19 | 20 | 21 | 22 | 23 | 24 |
| 25 | 26 | 27 | 28 | 29 | 30 | |
| | | | | | | |

| Mayo 2027 | | | | | | |
|-----------|----|----|----|----|----|----|
| Su | M | Tu | W | Th | F | S |
| | | | | | | 1 |
| 2 | 3 | 4 | 5 | 6 | 7 | 8 |
| 9 | 10 | 11 | 12 | 13 | 14 | 15 |
| 16 | 17 | 18 | 19 | 20 | 21 | 22 |
| 23 | 24 | 25 | 26 | 27 | 28 | 29 |
| 30 | 31 | | | | | |

| Junio 2027 | | | | | | |
|------------|----|----|----|----|----|----|
| Su | M | Tu | W | Th | F | S |
| | | 1 | 2 | 3 | 4 | 5 |
| 6 | 7 | 8 | 9 | 10 | 11 | 12 |
| 13 | 14 | 15 | 16 | 17 | 18 | 19 |
| 20 | 21 | 22 | 23 | 24 | 25 | 26 |
| 27 | 28 | 29 | 30 | | | |
| | | | | | | |

| Julio 2027 | | | | | | |
|------------|----|----|----|----|----|----|
| Su | M | Tu | W | Th | F | S |
| | | | | 1 | 2 | 3 |
| 4 | 5 | 6 | 7 | 8 | 9 | 10 |
| 11 | 12 | 13 | 14 | 15 | 16 | 17 |
| 18 | 19 | 20 | 21 | 22 | 23 | 24 |
| 25 | 26 | 27 | 28 | 29 | 30 | 31 |
| | | | | | | |



No tenemos clases/ Día Festivo



Primer y Ultimo Dia de Clases



Salimos a la 1:00

CATHOLIC SCHOOLS WEEK

**MONDAY
FEB. 2**

CELEBRATE OUR COMMUNITY

Students may be out of uniform if they bring in \$1 to be donated to St. Elizabeth's Charities.

**TUESDAY
FEB. 3**

CELEBRATE OUR STUDENTS

Students will be able to wear comfy clothes with tennis shoes.

**WEDNESDAY
FEB. 4**

CELEBRATE OUR VOCATIONS

Students will be in uniform on this day.

**THURSDAY
JAN. 29**

CELEBRATE OUR NATION

Students may wear a red, white, and/or blue top with jeans or sweats.

**FRIDAY
JAN. 30**

CELEBRATE OUR FACULTY/STAFF

Students may wear spirit wear with jeans or sweats.



Catholic Schools
United in Faith and Community

St. Anthony School

320 N. Sherwood Ave.
Clarksville, IN 47129



**WE ARE A PROUD
CATHOLIC SCHOOL**

Share why you love Catholic Schools
on social media using #CSW2026

SEMANA CATOLICA ESCOLAR

**LUNES 2 DE
FEBRERO**

CELEBRAREMOS NUESTRA COMUNIDAD

Los alumnos pueden usar ropa del diario si traen un dólar para donar a St. Elizabeth's Charities.

**MARTES 3 DE
FEBRERO**

CELEBRAREMOS A NUESTROS ALUMNOS

Los alumnos pueden usar ropa cómoda con tenis.

**MIÉRCOLES 4
DE FEBRERO**

CELEBRAREMOS LA VOCACIÓN

Hoy los alumnos deben usar su uniforme escolar.

**JUEVES 29
DE ENERO**

CELEBRAREMOS NUESTRA NACIÓN

Los alumnos pueden usar una playera roja, blanca y/o azul con pantalón de mezclilla o pantalón de pants.

**VIERNES 30
DE ENERO**

CELEBRAREMOS NUESTROS MAESTROS Y TRABAJADORES

Los alumnos pueden usar una playera con el logo de la escuela con pantalón de mezclilla o pantalón de pants.



Catholic Schools
United in Faith and Community

St. Anthony School

320 N. Sherwood Ave.
Clarksville, IN 47129



**WE ARE A PROUD
CATHOLIC SCHOOL**

Share why you love Catholic Schools
on social media using #CSW2026



YEARBOOK COVER CONTEST



SHOW YOUR PRIDE FOR SAS!

**USING THE PAPER PROVIDED BY MRS. HARRINGTON,
DRAW AND COLOR YOUR DESIGN FOR THE FRONT
COVER OF THE YEARBOOK.**

**YOUR DESIGN NEEDS TO INCLUDE THE NAME OF OUR
SCHOOL AND THE SCHOOL YEAR 2025-2026.**

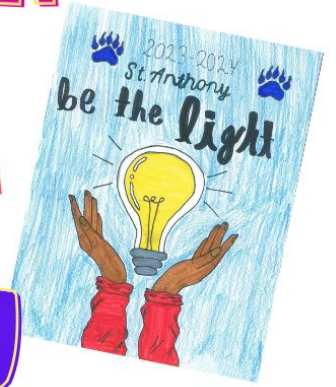
THE WINNER WILL RECEIVE A FREE YEARBOOK!

SUBMISSIONS ARE DUE BY FEBRUARY 6

For questions, contact Mrs. Harrington
j.harrington@stanthonysschool.us



COMPETENCIA DE PORTADA DE ANUARIO



DEMUESTRA TU ORGULLO POR SAS!

**USANDO LA HOJA QUE TE DIO LA SRA. HARRINGTON,
DUBUJA Y COLOREA TU DISEÑO PARA LA PORTADA
DEL ANUARIO ESCOLAR.**

**TU DISEÑO DEBEN INCLUIR EL NOMBRE DE LA ESCUELA
Y EL AÑO ESCOLAR 2025-2026.**

EL GANADOR RECIBIRA UN ANUARIO GRATIS!

**LAS HOJAS DEBEN SER ENTREGADAS A MAS
TARDAR EL 6 DE FEBRERO.**

**Si, tienes preguntas communicate con la señora Harrington
j.harrington@stanthony.school.us**



ST. ANTHONY SCHOOL

OPEN HOUSE

*Where your child will smile,
achieve and succeed.*

**Sunday,
February 1, 2026**

11AM - 2PM

320 N. Sherwood Ave.
Clarksville, IN 47129

- ✓ Tour the school
- ✓ Meet teachers
- ✓ Review curriculum
- ✓ Ask questions



For more info:

812-282-2144



Visit us:

www.stap.us



ESCUELA SAN ANTONIO
DE PADUA

CASA ABIERTA

*Donde su hijo sonreia,
alcanzara sus metas y
tendra éxito.*

**Domingo, 1 de
febrero del 2026**

11AM - 2PM

320 N. Sherwood Ave.
Clarksville, IN 47129

- ✓ Tener un recorrido de la escuela
- ✓ Conocer a los maestros
- ✓ Revisar el currículo
- ✓ Puede hacer preguntas



Para mas informacion
812-282-2144



Visitenos en:
www.stap.us





STAGE CREW NEEDED for SAS production of Frozen Jr. If you are a 5th-8th grader interested in being a part of the theater crew, please contact @Jamie Huber for details.

ST. ANTHONY SCHOOL PRESENTS
Disney
FROZEN JR.

**SATURDAY, FEBRUARY 21, 2026
@ 7PM**

**SUNDAY, FEBRUARY 22, 2026
@ 2PM**



MUSIC & LYRICS BY
KRISTEN ANDERSON-LOPEZ & ROBERT LOPEZ

BOOK BY

JENNIFER LEE

BASED ON THE DISNEY FILM WRITTEN BY JENNIFER LEE
AND DIRECTED BY CHRIS BUCK AND JENNIFER LEE
DISNEY'S FROZEN JR. IS PRESENTED THROUGH SPECIAL
ARRANGEMENT WITH AND ALL AUTHORIZED MATERIALS ARE
SUPPLIED BY

MUSIC THEATRE INTERNATIONAL, NEW YORK, NY
212-541-4684 MTISHOWS.COM

ST. ANTHONY SCHOOL PRESENTS

Disney
FROZEN JR.



SATURDAY, FEBRUARY 21, 2026

TIME: 7:00PM

WHERE: SCHOOL GYM

COST PER TICKET: \$5.00

_____ **# of Tickets Needed**

Family Name _____

_____ **Send tickets home with my child**

_____ **I will pick up my tickets in the office**

SUNDAY, FEBRUARY 22, 2026

TIME: 2:00PM

WHERE: SCHOOL GYM

COST PER TICKET: \$5.00

_____ **# of Tickets Needed**

Family Name _____

_____ **Send tickets home with my child**

_____ **I will pick up my tickets in the office**



**PLEASE SEND ALL ORDERS TO THE OFFICE WITH MONEY AND ORDER FORM IN AN ENVELOPE
CHECKS MADE PAYABLE TO: ST. ANTHONY SCHOOL**

JOIN US FOR AN ENCHANTED EVENING

UNDER *the sea*

REVERSE RAFFLE AND SILENT AUCTION

**SATURDAY
FEB. 7, 2026**

**DOORS
OPEN AT
6PM**



**LOCATED IN
THE PARISH
GYM**

INDIANA GAMING LICENSE: 002390

ACOMPÁÑANOS A UNA NOCHE ENCANTADA

BAJO *Del Mar*

RIFA Y SUBASTA ANUAL

**SÁBADO, 7 DE
FEBRERO DEL
2026**

**LAS
PUERTAS
ABREN A
LAS 6PM**

**EN EL
GIMNASIO DE
LA IGLESIA**



INDIANA GAMING LICENSE: 002390



What is a Reverse Raffle?

Raffle tickets are drawn throughout the night eliminating potential winners with every draw. Every 5th ticket selected will be a money winner. As the night goes on, the dollar amounts increase and potential winners can decide to split jackpots or gamble to win the big prize!

Stumler's Catering

Dinner includes Garden Salad, Roasted Broccoli, Mashed Potatoes, Baked Cod, Grilled Chicken Breast, and Dessert.



50/50 Raffles

50/50 tickets will be sold throughout the evening.
The winner gets half the pot.
More tickets bought = More \$\$ in your pocket!

Silent Auction

Bid on some fantastic items we have up on the auction block! Each item will have a list for you to write down your bid. Highest bidder is the winner, so keep a close eye on the list throughout the night to make sure you're not out bid.



Treasure Trunk

Locked inside our treasure chest is a prize just waiting to be won.
Buy a key for your chance to unlock the treasure!

St. Anthony School Reverse Raffle & Silent Auction
Saturday, February 7, 2026
St. Anthony Parish Gym
Doors open at 6:00 PM. Dinner begins at 6:30 PM

Stumler's Catering Dinner Reservation Tickets - Tickets \$35 per person

Dinner includes Garden Salad, Roasted Broccoli, Mashed Potatoes, Baked Cod, Grilled Chicken Breast and dessert

Dinner ticket required for entry

Door prize drawing at the end of the evening (***must be present to win!***)

Raffle Ticket Prices & Prize Money

\$6025.00 in Prize Money!!!

Need not be present to win raffle

| RED \$50 Raffle Tickets <i>Only 200 to be sold</i> | BLUE \$25 Raffle Tickets <i>Only 200 to be sold</i> | WHITE \$10 Raffle Tickets <i>Only 200 to be sold</i> |
|---|--|---|
| One \$2500 winner One \$500 winner One \$250 winner One \$100 winner Five \$50 winners Five \$25 winners | One \$1000 winner One \$200 winner One \$100 winner One \$50 winner Five \$25 winners Five \$10 winners | One \$100 winner One \$100 winner One \$50 winner One \$25 winner Five \$15 winners Five \$5 winners |

The Reverse Raffle may seem confusing, but once you're at the event, you'll catch on quickly. Raffle tickets are drawn throughout the night, but only every 5th ticket selected is a money winner. As the night goes on, the dollar amounts increase and potential winners can decide to split jackpots or gamble to win the big prize! The evening is never boring, and there are many chances to win as the silent auction, 50/50 drawings and various other raffles and prizes will also take place. The quantity of the raffle tickets and the dinner reservation tickets are limited -- only 200 \$10 raffle tickets, 200 \$25 raffle tickets, and 200 \$50 raffle tickets will be sold. Turn in this Order Form soon so you're not left out!!!

For additional information, please contact Stephany Tucker at 812-282-2144.

*Please send this completed form with a cash or check payable to **St. Anthony School** to the school office:
 320 Sherwood Ave, Clarksville, IN 47129.*

Reverse Raffle Ticket & Dinner Reservation Ticket Order Form
St. Anthony School – February 7, 2026

Name _____

Address _____

City _____ State _____ Zip _____

Dinner Reservation Ticket is required for entry to the event, but you need not be present to win the raffle.

Stumler's Catering Dinner Reservation Tickets

Dinner includes Garden Salad, Roasted Broccoli, Mashed Potatoes, Baked Cod, Grilled Chicken Breast and dessert.

Number of dinner reservation tickets _____ x \$35 each ticket = _____

Request for seating _____

(Subject to availability and table allowance)

Raffle Tickets

| Quantity | Name of \$50 Ticket Holder | Telephone |
|----------|-----------------------------------|-----------|
| _____ | _____ | _____ |
| _____ | _____ | _____ |
| _____ | _____ | _____ |

Tickets will be distributed after Order Form and money is received

\$ _____

| Quantity | Name of \$25 Ticket Holder | Telephone |
|----------|-----------------------------------|-----------|
| _____ | SOLD OUT | _____ |
| _____ | | _____ |
| _____ | | _____ |

Tickets will be distributed after Order Form and money is received

\$ _____

| Quantity | Name of \$10 Ticket Holder | Telephone |
|----------|-----------------------------------|-----------|
| _____ | SOLD OUT | _____ |
| _____ | | _____ |
| _____ | | _____ |

Tickets will be distributed after Order Form and money is received

\$ _____

TOTAL _____

*Please send this completed form with a cash or check payable to **St. Anthony School** to the school office:*

320 Sherwood Ave, Clarksville, IN 47129.

Raffle Tickets

| Quantity | Name of \$50 Ticket Holder | Telephone |
|----------|-----------------------------------|-----------|
| _____ | _____ | _____ |
| _____ | _____ | _____ |
| _____ | _____ | _____ |
| _____ | _____ | _____ |
| _____ | _____ | _____ |
| _____ | _____ | _____ |
| _____ | _____ | _____ |

Tickets will be distributed after Order Form and money is received

\$ _____

| Quantity | Name of \$25 Ticket Holder | Telephone |
|----------|-----------------------------------|-----------|
| _____ | _____ | _____ |
| _____ | _____ | _____ |
| _____ | _____ | _____ |
| _____ | _____ | _____ |
| _____ | _____ | _____ |
| _____ | _____ | _____ |
| _____ | _____ | _____ |

SOLD OUT

Tickets will be distributed after Order Form and money is received

\$ _____

| Quantity | Name of \$10 Ticket Holder | Telephone |
|----------|-----------------------------------|-----------|
| _____ | _____ | _____ |
| _____ | _____ | _____ |
| _____ | _____ | _____ |
| _____ | _____ | _____ |
| _____ | _____ | _____ |
| _____ | _____ | _____ |
| _____ | _____ | _____ |

SOLD OUT

Tickets will be distributed after Order Form and money is received

\$ _____

TOTAL _____

*Please send this completed form with a check payable to **St. Anthony School** to the school office:
320 Sherwood Ave, Clarksville, IN 47129.*

St. Anthony Rifa, Subasta y Cena
Sábado, 7 de febrero del 2025
Gimnasio de la Iglesia
Las Puertas Abren a las 6pm

Reservaciones Para La Cena- Boletos \$35.00 por persona

La cena incluye una ensalada, brócoli, puré de papa, pescado, pechuga de pollo y postre.

Los boletos de la cena son necesarios para entrar. El boleto de la cena es un boleto para la última rifa de la noche. **(debe estar presente para ganar)**

Boletos para la Rifa y Premios en Efectivo

\$6025.00 en premios en efectivo!!

No necesita estar presente para ganar.

| Boletos Rojos de \$50 Solo 200 se venderán | Boletos Azules de \$25 Solo 200 se venderán | Boletos blancos de \$10 Solo 200 se venderán |
|---|--|---|
| Un ganador de \$2500 Un ganador de \$500 Un ganador de \$250 Un ganador de \$100 Cinco ganadores de \$50 Cinco ganadores de \$25 | Un ganador de \$1000 Un ganador de \$200 Un ganador de \$100 Un ganador de \$50 Cinco ganadores de \$25 Cinco ganadores de \$10 | Un ganador de \$500 Un ganador de \$100 Un ganador de \$50 Un ganador de \$25 Cinco ganadores de \$15 Cinco ganadores de \$5 |

La rifa puede que se vea difícil de entender pero cuando esté en el evento verá que es muy fácil. Los boletos son escogidos toda la noche, pero solo cada quinto boleto es ganador. Mientras pasa el tiempo más grande es el monto que se gana y los ganadores finales deciden si quieren compartir el dinero o jugar y ganar el premio grande. La noche nunca es aburrida y hay muchas oportunidades de ganar en la acción silenciosa, la rifa de 50/50, y otros premios. El monto de boletos para la cena y para la rifa son limitados. Solo 200 de \$10, 200 de \$25 y 200 de \$50 serán vendidos y solo 320 boletos para la cena serán vendidos. Regrese esta forma lo antes posible para no perderse este gran evento. Para más información comuníquese con Stephanie Tucker al 812-282-2144 Por favor mande su orden y pago a la oficina de la escuela. Los cheques deben ser hechos a nombre de St. Anthony School.

St. Anthony Rifa, Subasta y Cena Sábado, 7 de febrero del 2025
Gimnasio de la Iglesia Las Puertas Abren a las 6pm

Nombre: _____
Dirección: _____
Ciudad: _____ Estado: _____ Código Postal _____

Los boletos para la cena son necesarios para entrar al evento, pero no tiene que estar presente para ganar.

Boletos Para Reservar la Cena

La cena incluye una ensalada, brócoli, puré de papa, pescado, pechuga de pollo y postre.

Número de boletos para la cena _____ X \$35 cada boleto = \$ _____
El lugar donde le gustaría sentarse: _____

(Dependiendo de la disponibilidad y número de personas en la mesa)

Boletos para la Rifa

| Cantidad | Nombre del portador del boleto de \$50 | Teléfono |
|----------|--|----------|
| _____ | _____ | _____ |
| _____ | _____ | _____ |
| _____ | _____ | _____ |

Los boletos serán distribuidos después de que el dinero y la forma sean entregados. Total: _____
Nombre del portador del boleto de \$25

| Cantidad | | Teléfono |
|----------|-----------------|----------|
| _____ | SOLD OUT | _____ |
| _____ | | _____ |
| _____ | | _____ |

Los boletos serán distribuidos después de que el dinero y la forma sean entregados. Total: _____
Nombre del portador del boleto de \$10

| Cantidad | | Teléfono |
|----------|-----------------|----------|
| _____ | SOLD OUT | _____ |
| _____ | | _____ |
| _____ | | _____ |

Total: \$ _____

Favor de mandar esta forma y pago a la oficina de la escuela o por correo a la oficina: 320
Sherwood Ave, Clarksville, IN 47129. Los cheques deben ser hechos a nombre de St. Anthony.
Número de licencia para Jugar en Indiana 002390

Boletos para la Rifa

| Cantidad | Nombre del portador del boleto de \$50 | Teléfono |
|----------|--|----------|
| _____ | _____ | _____ |
| _____ | _____ | _____ |
| _____ | _____ | _____ |
| _____ | _____ | _____ |
| _____ | _____ | _____ |
| _____ | _____ | _____ |

Los boletos serán distribuidos después de que el dinero y la forma sean entregados. Total: _____

| Cantidad | Nombre del portador del boleto de \$25 | Teléfono |
|----------|--|----------|
| _____ | _____ | _____ |
| _____ | _____ | _____ |
| _____ | _____ | _____ |
| _____ | _____ | _____ |
| _____ | _____ | _____ |
| _____ | _____ | _____ |

SOLD OUT

Los boletos serán distribuidos después de que el dinero y la forma sean entregados. Total: _____

| Cantidad | Nombre del portador del boleto de \$10 | Teléfono |
|----------|--|----------|
| _____ | _____ | _____ |
| _____ | _____ | _____ |
| _____ | _____ | _____ |
| _____ | _____ | _____ |
| _____ | _____ | _____ |
| _____ | _____ | _____ |

SOLD OUT

Total: \$ _____

Favor de mandar esta forma y pago a la oficina de la escuela o por correo a la oficina: 320 Sherwood Ave, Clarksville, IN 47129. Los cheques deben ser hechos a nombre de St. Anthony.

Número de licencia para Jugar en Indiana 002390



Family Corner



4th Sunday in Ordinary Time

- 1) What boasting did you witness on the school playground?
From friends? Enemies? Yourself?
- 2) If you could "boast" about one thing regarding yourself or your family, what would it be?
- 3) How does the world define wisdom?
- 4) How has God made foolish the wisdom of the world?
- 5) How does this passage illustrate that God's ways are not our ways?



Mt. 4:19 "Follow me," he told them,
"and I will make you fishers of people!"

I am Catholic...

Because only the Catholic Church can Save Huan Civilization from Spiritual and Material Destruction

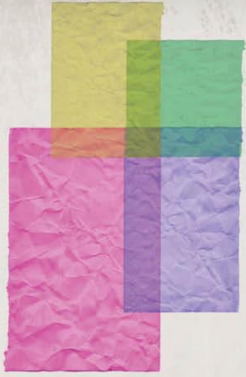
Bodies—and the civilizations they make—follow souls wherever they go, both in this life and in the next, to Heaven or Hell. Whatever is good in the civilizations we make will be transformed and saved in Heaven. Whatever is not, will not.

- The Catholic Church is the only concrete thing in history, except for the Jews that we know will still be here when Christ comes again and history ends, even if that is a million years from now. And when He comes, he will marry her (Rev. 21:2); and He is not a polygamist: He will not marry a harem of twenty thousand denominations.
- The Catholic Church is the greatest repository and synthesis of the wisdom of the past, and the only long-range hope for the future, of humane human civilization.
- The Catholic Church is immortal. Throughout history, whenever she seems to die, she rises (See "The Five Deaths of the Faith," chapter 6 of Chesterton's The Everlasting Man."
- The Catholic Church is the only thing in the world that wins even when she loses: the blood of her martyrs, shed in every age and most copiously in our own, is the seed that grows the most glorious fruits of the future Church.
- God incarnate promised that the gates of Hell would not prevail against His Church (Matthew 16:18), and I do not want them to prevail against me.
Taken from Peter Kreeft's Book 40 Reasons I am a Catholic

Trivia: (brought to you by Patrick & Patrick YM Trivia Night Exclusive):
What popular toys, designed by former NFL player Pat McInally, did Kevin McCallister use for target practice in the 1990 film Home Alone?

- a) G.I. Joe
- b) Potato Head
- c) Play-Doh
- d) Starting Lineup
- e) Little Green Army Men

Keep scrolling to find the answer!



ALL ARE WELCOME



Scan to
signup

Are you in Grade K-8 and looking for more?

- Are you interested in becoming Catholic?
- Have you missed receiving some of your sacraments?
- Are you interested in learning more about the Bible?

We want to help!

Go to www.stanthony-clarksville.org/youth or contact Patrick at youth@stanthony-clarksville.org



CONFIRMATION

Scan to sign up



Are you a St. Anthony parishioner with a student interested in learning more about the Sacrament of Confirmation? Scan the code to start the process of preparation.

Questions, contact Patrick Holifield at 502-724-9717 or his office number 812-282-2290.

stanthony-clarksville.org/confirmation26

ST. ANTHONY YOUTH MINISTRY PRESENTS



A NIGHT IN PARIS



February 13, 2026

6:00 PM - 8:00 PM

Parish Gym

Fathers (or a special male role model) can spend the evening with their daughter(s) for heavy hors d'oeuvres, desserts, dancing, photos, and special one on one time.

All of our Kindergarten-8th grade Parish/School Community are welcome.

Tickets for this event are \$35 per Father/Daughter. Please return the slip below to school or drop in the Sunday collection indicating how many will be attending with appropriate payment for tickets.

Child's Name _____

Adult's Name _____

Number of Guests attending _____

Parish Family Address _____

Teacher's Name _____ Grade(s) _____



Tickets are \$35 a couple. More than one daughter is FREE.

Please make checks payable to St. Anthony Youth Ministry and return this form with payment to your school teacher via backpack mail or drop in Sunday collection marked "Attn: Youth Ministry - Father/Daughter Dance" by **February 7, 2026**. If you have more questions, feel free to contact Patrick Holifield at youth@stanthony-clarksville.org or call 812-282-2290.

EL MINISTRO DE JÓVENES DE ST. ANTHONY PRESENTA



UNA NOCHE EN PARIS



13 de febrero del 2026

6:00 PM - 8:00 PM

gimnasio de la iglesia

Un padre o un hombre especial puede pasar un rato con su hija y disfrutar de postres, bailes, fotos, y pasar un rato especial.

Todas las alumnas de Kinder-8° grado estan invitadas

Los boletos tienen un costo de \$35 por padre e hija. Mas de una hija es gratis. Por favor regrese esta forma a la escuela indicando cuántas personas asistirán a mas tardar el 7 de febrero.

Nombre de la Alumna _____

Nombre del Adulto _____

Numero total que Asistira _____

Direccion _____

Nombre del Maestro _____ Grado _____



El costo de los boletos es de \$35 por pareja. No paga por mas de una hija.

Puede hacer el cheque a nombre de St. Anthony Youth Ministry y regresar el pago y forma a la escuela en un sobre que diga "Attn: Youth Ministry - Father/Daughter Dance" a mas tardar el **7 de febrero del 2026.**

Si tiene preguntas comuniquese con Patrick Holifield en youth@stanthony-clarksville.org o llamando al 812-282-2290.



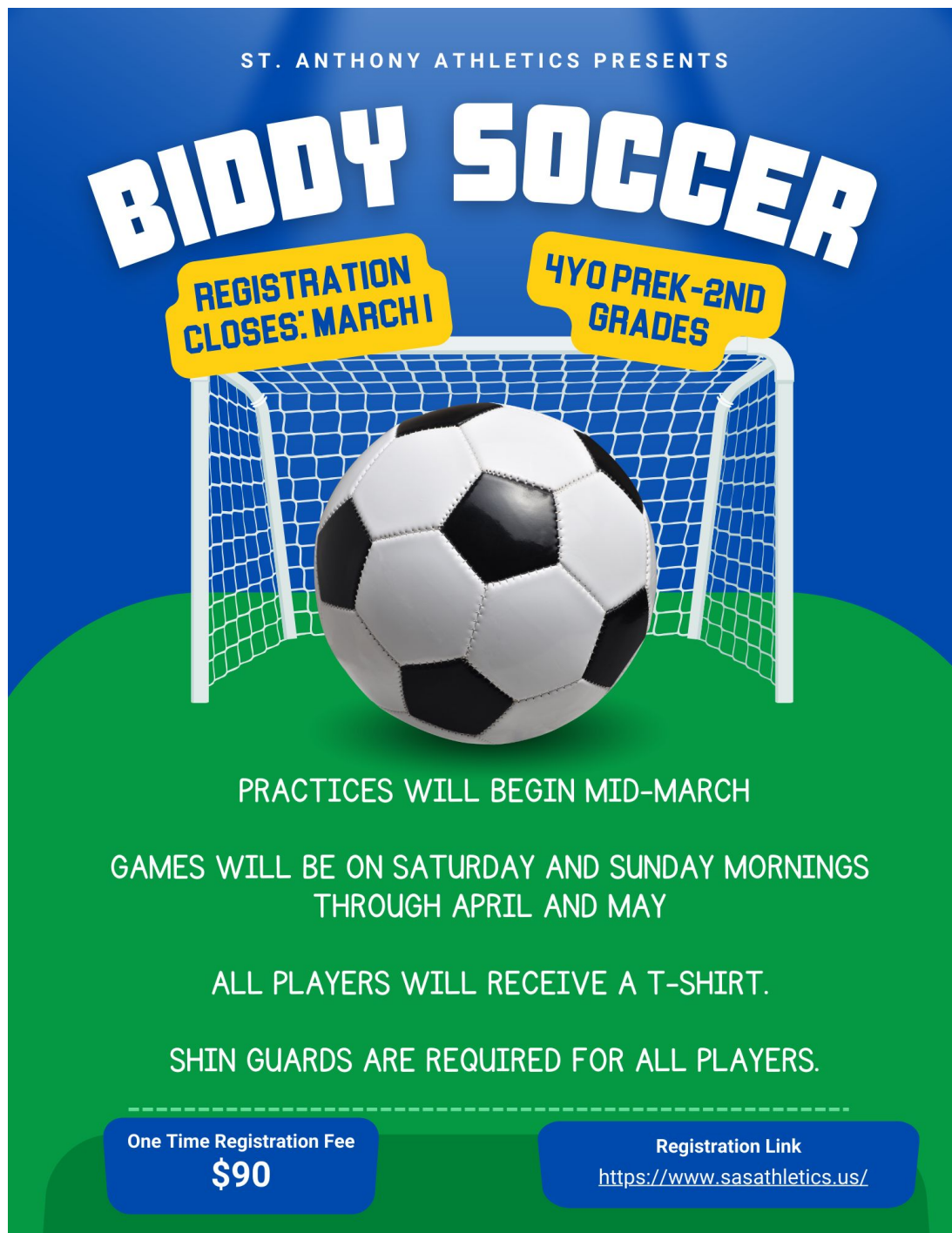
⚽ Attention Soccer Fans! ⚽

Registration for Biddy Soccer is now OPEN!

Children from 4-year-old preschoolers through 2nd graders are invited to sign up and join the fun. This is a great opportunity for young players to learn the basics, build skills, and enjoy the game in a fun, supportive environment.

👉 Sign up today and let the soccer fun begin!

<https://www.sasathletics.us/registration>

A promotional poster for Biddy Soccer. The background is blue at the top and green at the bottom, representing a sky and grass field. In the center is a soccer goal with a white frame and blue netting. A black and white soccer ball is positioned in front of the goal. Above the goal, the text "ST. ANTHONY ATHLETICS PRESENTS" is written in small white capital letters. Below this, the words "BIDDY SOCCER" are written in large, bold, white, slightly slanted capital letters. Two yellow speech bubble-like shapes are placed above the goal. The left one says "REGISTRATION CLOSES: MARCH!" and the right one says "4YO PREK-2ND GRADES". Below the goal, the text "PRACTICES WILL BEGIN MID-MARCH" is written in white capital letters. Further down, "GAMES WILL BE ON SATURDAY AND SUNDAY MORNINGS THROUGH APRIL AND MAY" is written in white capital letters. Below that, "ALL PLAYERS WILL RECEIVE A T-SHIRT." is written in white capital letters. At the bottom, "SHIN GUARDS ARE REQUIRED FOR ALL PLAYERS." is written in white capital letters. At the very bottom, there are two blue rounded rectangular boxes. The left box contains the text "One Time Registration Fee" followed by "\$90" in large white font. The right box contains the text "Registration Link" followed by the URL "https://www.sasathletics.us/" in white font.

ST. ANTHONY ATHLETICS PRESENTS

BIDDY SOCCER

REGISTRATION CLOSES: MARCH!

4YO PREK-2ND GRADES

PRACTICES WILL BEGIN MID-MARCH

GAMES WILL BE ON SATURDAY AND SUNDAY MORNINGS
THROUGH APRIL AND MAY

ALL PLAYERS WILL RECEIVE A T-SHIRT.

SHIN GUARDS ARE REQUIRED FOR ALL PLAYERS.

One Time Registration Fee
\$90

Registration Link
<https://www.sasathletics.us/>

ST. ANTHONY ATHLETICS PRESENTS

BIDDY SOCCER

**LAS INSCRIPCIONES
CIERRAN EL 1 DE MARZO**

**4 AÑOS DE PRE
KINDER A 2 GRADO**



LAS PRÁCTICAS EMPEZARÁN A MEDIADOS DE MARZO.

LOS JUEGOS SERÁN LOS SÁBADOS Y DOMINGOS EN LA MAÑANA
EN ABRIL Y MAYO.

TODOS LOS JUGADORES RECIBIRÁN UNA PLAYERA.

LAS ESPINILLERAS SON OBLIGATORIAS PARA TODOS LOS
JUGADORES.

One Time Registration Fee
\$90

Registration Link
<https://www.sasathletics.us/>



MIDDLE SCHOOL MONTHLY

for 6-8th graders of the New Albany Deanery

GUYS AND GALS NIGHT

FRIDAY, FEBRUARY 20

6-8pm | at Our Lady of Perpetual Help

- *Gals: Boba tea & crafting*
- *Guys: Competitive games & challenges*
- *Together: Guys vs. gals showdowns of strength and smarts*

\$10 registration due online by February 15



**EVENT DETAILS & REGISTRATION @
CATALYSTCATHOLIC.ORG/MSM**



Winter Cheer Clinic

Elementary students to learn cheer basics from Providence cheerleaders

CLARKSVILLE— Providence High School Cheerleading is excited to invite young athletes to its Love to Cheer Winter Cheer Clinic on **Sunday, February 1, 2026, from 1:00–3:30 p.m.** in Koetter Gym. This fun-filled afternoon is open to students in grades PreK–8 and is designed to introduce participants to the excitement, teamwork, and school spirit of cheerleading at Providence.

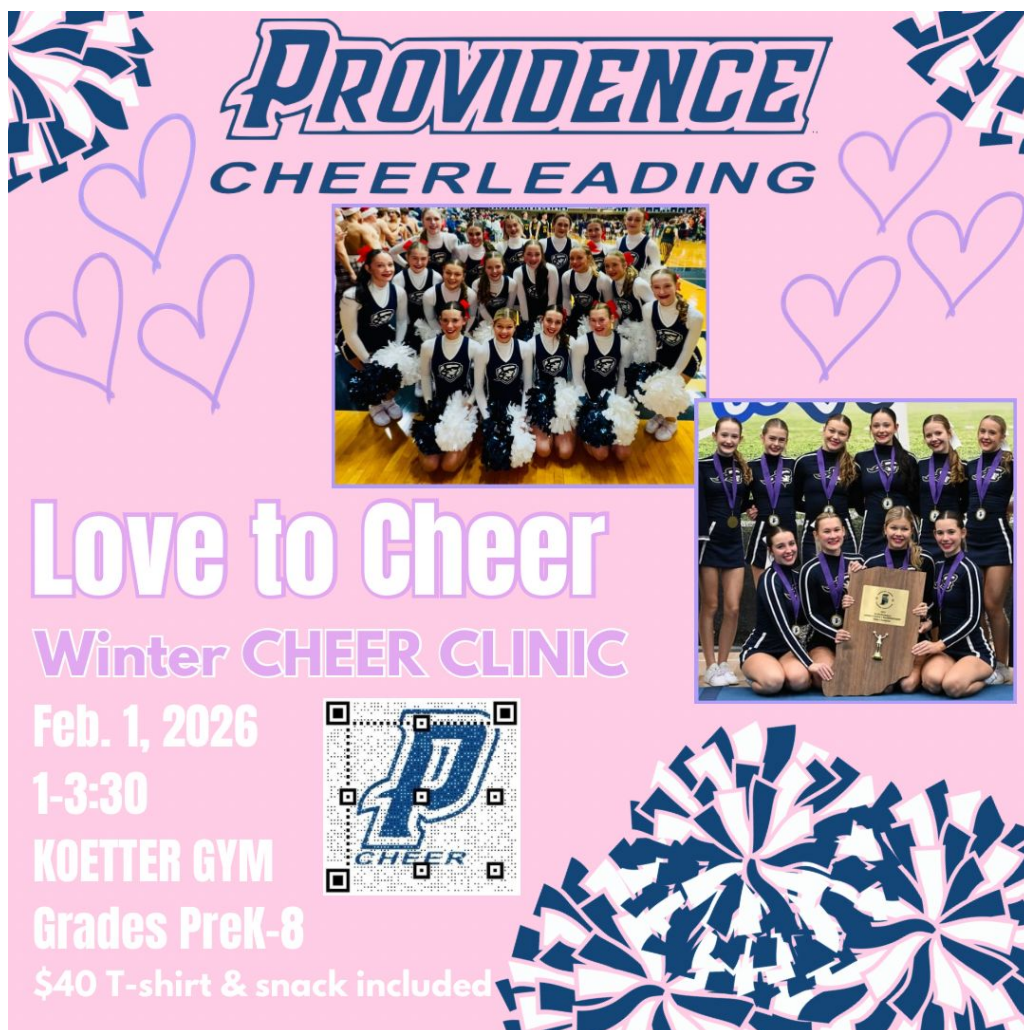
Future Pioneers will learn a fun halftime routine, along with basic stunts, jumps, tumbling, and more, all taught by their favorite PHS Cheerleaders.

The cost to attend is \$40, which includes a T-shirt and snack. Whether your child is brand new to cheer or already loves to perform, this clinic is a great way to experience the energy and spirit of Providence Cheerleading.

To register, please visit this link: <https://tinyurl.com/37ayntm4>

Providence High School is located at 707 Providence Way, in Clarksville, IN.

For more information, please contact Tara Schmelz at tschmelz@providencehigh.net.



The poster features a pink background with decorative elements including blue and white pom-poms in the corners and bottom right, and several purple heart outlines. At the top, the text "PROVIDENCE CHEERLEADING" is written in a stylized blue font. Below this, there are two photographs: one of a large group of cheerleaders in black and white uniforms, and another of a smaller group holding a wooden trophy. The main text "Love to Cheer" is in large white letters with a pink outline, followed by "Winter CHEER CLINIC" in purple. The event details are listed in white text: "Feb. 1, 2026", "1-3:30", "KOETTER GYM", "Grades PreK-8", and "\$40 T-shirt & snack included". A small logo with a blue "P" and the word "CHEER" is also present.

PROVIDENCE
CHEERLEADING

Love to Cheer
Winter CHEER CLINIC

Feb. 1, 2026
1-3:30
KOETTER GYM
Grades PreK-8
\$40 T-shirt & snack included



Raising Awareness, Funds for Area Food Banks

Our Lady of Providence High School art students are working to raise awareness and funds to combat area hunger by hosting their annual Empty Bowls event.

LOCATION: Providence High School 707 Providence Way, in Clarksville, IN; Student Commons

DETAILS: The event is free and open to the public. Donations will be accepted and go to area food banks. Those interested in becoming an event sponsor are asked to email Ms. Cooper at tcooper@providencehigh.net.

During this free event, visitors will enjoy a modest meal of soup and bread. They will choose a student-created ceramic bowl as a keepsake to remember those who go without and suffer from hunger.

“So many of us are blessed and do not know what food insecurity feels like. This modest meal reminds us all what those who are hungry would be grateful to enjoy,” said art teacher and event organizer Tina Cooper.

“Every time we use our keepsake bowl in the future, we will remember this day, this meal, and how we are called to help others in need. We hope this event raises much-needed funds to help support our area food banks.”

For more information, please contact Tara Schmelz at tschmelz@providencehigh.net.





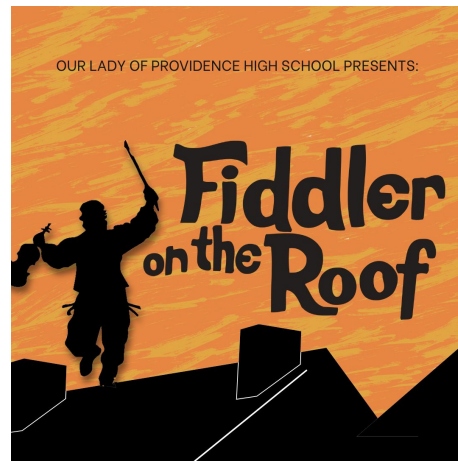
***Fiddler on the Roof* tickets now available**

CLARKSVILLE—Our Lady of Providence High School is proud to announce its upcoming spring musical production of the Broadway classic *Fiddler on the Roof*. Performances will take place in Robinson Auditorium over two weekends: **February 27–March 1** and **March 6–8**.

Set in the small village of Anatevka, *Fiddler on the Roof* tells the story of Tevye, a poor milkman, and his family as they navigate love, faith, and the challenges of change. With unforgettable music, rich storytelling, and heartfelt moments, this show promises to captivate audiences of all ages.

Performance Schedule:

- Friday, Feb. 27 – 7:00 p.m.
- Saturday, Feb. 28 – 7:00 p.m.
- Sunday, Mar. 1 – 2:00 p.m.
- Friday, Mar. 6 – 7:00 p.m.
- Saturday, Mar. 7 – 7:00 p.m.
- Sunday, Mar. 8 – 2:00 p.m.



Ticket Information:

Reserved seating tickets are \$15. Tickets can be purchased online at <https://providencehs.booktix.com/> or by calling the box office at 812-945-2538.

Providence High School is located at 707 Providence Way, in Clarksville, IN.

For more information, please contact Tara Schmelz at tschmelz@providencehigh.net.



Mt. 4:19 "Follow me," he told them,
"and I will make you fishers of people!"

Answer: E. Former NFL player Pat McInally designed the hugely popular Starting Line-up sports action figures, a line of detailed, collectible figures depicting professional athletes from various sports, originally launched by Kenner Toys in 1988 and later produced by Hasbro. The concept came to McInally after he noticed a lack of real athletes in the toy market, similar to G.I. Joe figures, and successfully pitched the idea to Kenner, creating a hit with fans and collectors.