

## Princess V50 – 3 cabin layout



**YEAR:** 2023  
**TYPE:** Sports coupe  
**LOA:** 52.7'  
**BEAM:** 13.4'  
**DRAFT:** 3.8'  
**WEIGHT:** 18,234 Kg  
**ENGINE:** 2 x Volvo  
 Penta IPS650  
 - 480hp  
**HOURS:** 175 approx.  
**FUEL:** Diesel  
**FUEL TANK:** 1,550L  
**WATER TANK:** 345L  
**BERTHS:** 6

### PRINCIPAL FEATURES

High gloss walnut interior, Electro-hydraulic Hi-Lo bathing platform (350kg), Williams 280MJ (STO), Cockpit wetbar with BBQ, sink and storage, Electrically operated sliding sunroof with blinds, Bow thruster, Volvo Joystick control, Twin 16" Garmin MFD Radar/Volvo/GPS chart plotters & DSC VHF, Upgraded 15kva Generator, 54,000 BTU reverse cycle air-conditioning throughout, Electric quiet freshwater flush heads with holding tanks, Heated towel rails, 43" LED TV on powered lift in Saloon linked to Fusion Apollo Bluetooth stereo with twin speakers and subwoofer, 43" LED TV in master mid cabin linked to Fusion Apollo Bluetooth stereo with twin speakers and subwoofer,

**LYING:** Hamble River Boat Yard

**Reduced from: £1,050,000**

**NEW PRICE: £995,000 (tax paid)**

### Description:

This is a stunning 2023 example of this sought after Princess V50 powered by twin Volvo Penta IPS650 - 480hp engines capable of over 30knots plus the benefit of the Joystick to make low speed handling a breeze and with the build quality and finish expected from the luxurious Princess brand.

**t: 01489 886663 m: 07917 148807 e: [sales@solentmotoryachts.com](mailto:sales@solentmotoryachts.com)**

Solent Motor Yachts, Hamble River Boat Yard, Bridge Road, Swanwick, Southampton SO31 7EB



## Princess V50 – 3 cabin layout

She offers a three cabin, galley down layout with a spacious cockpit, fore deck sunpads with teak tilting backrest and teak decking all over. Saloon with hi-lo coffee or dining table, twin stools, opposite the entertainment unit with pop up TV, fridge, icemaker and storage behind the twin helm station.

There is a well-equipped drop down galley with large fridge freezer, dishwasher, power pop up storage. Her large full beam owners cabin features an en-suite head with lots of storage and beautiful décor, The forward VIP cabin is also a good size and shares en-suite access to the day head, cabin 3 has a twin-bunks.

Part exchanges may be considered.

Contact Derek to arrange a viewing as you will not be disappointed.

### Specification and equipment:

- Construction: GRP
- Hull Colour: White
- Drive Type: Shaft drive
- Maximum Speed: 31 knots (approx.)
- Cruising Speed: 23 knots (approx.)
- Hull: Planing

2 x Volvo Penta IPS650 – D6 - 480hp with 175hrs and a full main dealer service history

Volvo joystick for simply mooring

Volvo interceptor trim tabs

120kgf Side power bow thruster

Shore power & cable with 80-amp 24v float battery charger

24v DC/240v AC electrical system

Upgraded Wisperpower Piccolo 12kW generator (hrs TBC)

Dometic 54,000BTU reverse cycle air conditioning/heating throughout including outlets in bathrooms

Heated towel rails to heads compartments

Electric quiet freshwater flush heads to holding tank with deck or sea discharge

**t: 01489 886663    m: 07917 148807   e: [sales@solentmotoryachts.com](mailto:sales@solentmotoryachts.com)**  
Solent Motor Yachts, Hamble River Boat Yard, Bridge Road, Swanwick, Southampton SO31 7EB

Solent Motor Yachts normally acts as a broker for the vendor who unless otherwise stated is not acting in the course of a business. Whilst every care has been taken in the preparation of these particulars the correctness is not guaranteed and they are intended as a guide only and do not constitute a part of any contract. A prospective buyer is strongly advised to check these particulars and where appropriate and at his own expense to employ a qualified marine surveyor to carry out a survey and/or to have an engine trial conducted which if conducted by Solent Motor Yachts shall not imply any liability on our part.



## Princess V50 – 3 cabin layout

Deck saloon - 43" UHD LED TV on a powered lift mechanism linked to a Fusion Apollo MS RA-770 AM/FM/Bluetooth/DAB/WiFi and external USD connection paired with twin focal speakers and subwoofer in place of standard audio package

Upgraded deck saloon table to Hi-Lo folding coffee or dining table with twin stools that clip to the table when not in use

Owners Stateroom - 43" UHD LED TV linked to a Fusion Apollo MS RA-770 AM/FM/Bluetooth/DAB/WiFi and external USD connection paired with twin focal speakers and subwoofer in place of standard audio package

Dishwasher fitted in galley

Washer/dryer fitted in galley

Upgraded 3 ring elec hob

LED lighting throughout with dimmers to saloon and amsteer cabin

Samsung combination microwave over and grill

Exterior lighting package to include 8 additional deck lights

Twin Garmin 16" MFD GPS/HD Radar chart plotters

Garmin XHD colour 24" radar radome painted non-metallic black to blend with the custom canopy

Garmin remote control keypad at helm position

Garmin DSC VHF

Compass

Teak bathing platform with Princess logo upgrade, cockpit, side and fore decking with teak step nosing upgrade (inc transom and side deck steps)

Cockpit seating/dining area with access both sides

Electro-hydraulic raise/lower bathing platform (350kg max tender) with S/S sliders and teak tender chocks

Electric sliding roof with manual blinds

Electric power helm window

Cockpit wetbar including BBQ, sink and storage

Cockpit enclosure cover

Cockpit seat and table covers

Blackout covers for front and side windows

**t: 01489 886663    m: 07917 148807    e: [sales@solentmotoryachts.com](mailto:sales@solentmotoryachts.com)**

Solent Motor Yachts, Hamble River Boat Yard, Bridge Road, Swanwick, Southampton SO31 7EB

Solent Motor Yachts normally acts as a broker for the vendor who unless otherwise stated is not acting in the course of a business. Whilst every care has been taken in the preparation of these particulars the correctness is not guaranteed and they are intended as a guide only and do not constitute a part of any contract. A prospective buyer is strongly advised to check these particulars and where appropriate and at his own expense to employ a qualified marine surveyor to carry out a survey and/or to have an engine trial conducted which if conducted by Solent Motor Yachts shall not imply any liability on our part.



## Princess V50 – 3 cabin layout

Mosquito screens for all opening portlights

Foredeck sun pad cushions with back rests and protective cover

Electric anchor windlass with foredeck and helm position controls

Upgraded S/S Delta anchor with max 50m chain

Foredeck freshwater anchor/deck wash system

Aft shore water inlet

Allure collection with custom painted canopy and signal red styling blade

Navigation lights

Automatic engine fire extinguishers

Manual fire extinguishers

ACR remote control searchlight

Automatic & manual bilge pumps

Warps & fenders

### **Accommodation:**

6 berths in 3 cabins with high gloss walnut joinery, Wenge planked floor to saloon, galley, stairs and helm, Carrara white galley worktop with upgraded symphony Paris carpets

The versatile Princess V50 proudly features the all-new V Class exterior design with a full-length hull window. Her elegant style is matched only by her responsive power, reaching speeds up to 31 knots. Designed for the outdoor adventurer, the V50 has been designed for thrill-seekers to travel even further afield.

The Princess V50 is a fantastic representation of Princess' forward thinking design and engineering. An intuitive IPS system and joystick allows for easy owner piloting and management of factors such as wind and current a breeze – even manoeuvring in crowded marinas has been made easier.

When it comes to the Princess V50's interior, there is a clear nod to the previous design whilst introducing modern materials and textures. With all Princess yachts, the V50 has been designed for entertaining – an exceptional outdoor cockpit provides the ideal al-fresco living space, with an elongated canopy providing protection and shade. The open feel of this new yacht allows guests to move with ease between areas and levels, creating a completely balanced yachting experience.

**t: 01489 886663    m: 07917 148807    e: [sales@solentmotoryachts.com](mailto:sales@solentmotoryachts.com)**  
Solent Motor Yachts, Hamble River Boat Yard, Bridge Road, Swanwick, Southampton SO31 7EB

Solent Motor Yachts normally acts as a broker for the vendor who unless otherwise stated is not acting in the course of a business. Whilst every care has been taken in the preparation of these particulars the correctness is not guaranteed and they are intended as a guide only and do not constitute a part of any contract. A prospective buyer is strongly advised to check these particulars and where appropriate and at his own expense to employ a qualified marine surveyor to carry out a survey and/or to have an engine trial conducted which if conducted by Solent Motor Yachts shall not imply any liability on our part.



## Princess V50 – 3 cabin layout

Below deck, there is a fully equipped galley and 6 guests can be accommodated over three beautifully lit cabins. A full-beam master stateroom, a renowned feature of Princess yachts, sits mid-ships taking advantage of the space. The forward VIP double cabin has en-suite has additional access to the day head. Third guest bunk cabin.

### Images:



**t: 01489 886663    m: 07917 148807   e: [sales@solentmotoryachts.com](mailto:sales@solentmotoryachts.com)**  
Solent Motor Yachts, Hamble River Boat Yard, Bridge Road, Swanwick, Southampton SO31 7EB

Solent Motor Yachts normally acts as a broker for the vendor who unless otherwise stated is not acting in the course of a business. Whilst every care has been taken in the preparation of these particulars the correctness is not guaranteed and they are intended as a guide only and do not constitute a part of any contract. A prospective buyer is strongly advised to check these particulars and where appropriate and at his own expense to employ a qualified marine surveyor to carry out a survey and/or to have an engine trial conducted which if conducted by Solent Motor Yachts shall not imply any liability on our part.



## Princess V50 – 3 cabin layout



**t: 01489 886663    m: 07917 148807   e: [sales@solentmotoryachts.com](mailto:sales@solentmotoryachts.com)**  
Solent Motor Yachts, Hamble River Boat Yard, Bridge Road, Swanwick, Southampton SO31 7EB

Solent Motor Yachts normally acts as a broker for the vendor who unless otherwise stated is not acting in the course of a business. Whilst every care has been taken in the preparation of these particulars the correctness is not guaranteed and they are intended as a guide only and do not constitute a part of any contract. A prospective buyer is strongly advised to check these particulars and where appropriate and at his own expense to employ a qualified marine surveyor to carry out a survey and/or to have an engine trial conducted which if conducted by Solent Motor Yachts shall not imply any liability on our part.



## Princess V50 – 3 cabin layout



**t: 01489 886663    m: 07917 148807    e: [sales@solentmotoryachts.com](mailto:sales@solentmotoryachts.com)**  
Solent Motor Yachts, Hamble River Boat Yard, Bridge Road, Swanwick, Southampton SO31 7EB

Solent Motor Yachts normally acts as a broker for the vendor who unless otherwise stated is not acting in the course of a business. Whilst every care has been taken in the preparation of these particulars the correctness is not guaranteed and they are intended as a guide only and do not constitute a part of any contract. A prospective buyer is strongly advised to check these particulars and where appropriate and at his own expense to employ a qualified marine surveyor to carry out a survey and/or to have an engine trial conducted which if conducted by Solent Motor Yachts shall not imply any liability on our part.



## Princess V50 – 3 cabin layout



**t: 01489 886663    m: 07917 148807    e: [sales@solentmotoryachts.com](mailto:sales@solentmotoryachts.com)**  
Solent Motor Yachts, Hamble River Boat Yard, Bridge Road, Swanwick, Southampton SO31 7EB

Solent Motor Yachts normally acts as a broker for the vendor who unless otherwise stated is not acting in the course of a business. Whilst every care has been taken in the preparation of these particulars the correctness is not guaranteed and they are intended as a guide only and do not constitute a part of any contract. A prospective buyer is strongly advised to check these particulars and where appropriate and at his own expense to employ a qualified marine surveyor to carry out a survey and/or to have an engine trial conducted which if conducted by Solent Motor Yachts shall not imply any liability on our part.



## Princess V50 – 3 cabin layout



**t: 01489 886663    m: 07917 148807    e: [sales@solentmotoryachts.com](mailto:sales@solentmotoryachts.com)**  
Solent Motor Yachts, Hamble River Boat Yard, Bridge Road, Swanwick, Southampton SO31 7EB

Solent Motor Yachts normally acts as a broker for the vendor who unless otherwise stated is not acting in the course of a business. Whilst every care has been taken in the preparation of these particulars the correctness is not guaranteed and they are intended as a guide only and do not constitute a part of any contract. A prospective buyer is strongly advised to check these particulars and where appropriate and at his own expense to employ a qualified marine surveyor to carry out a survey and/or to have an engine trial conducted which if conducted by Solent Motor Yachts shall not imply any liability on our part.



## Princess V50 – 3 cabin layout



**t: 01489 886663    m: 07917 148807    e: [sales@solentmotoryachts.com](mailto:sales@solentmotoryachts.com)**  
Solent Motor Yachts, Hamble River Boat Yard, Bridge Road, Swanwick, Southampton SO31 7EB

Solent Motor Yachts normally acts as a broker for the vendor who unless otherwise stated is not acting in the course of a business. Whilst every care has been taken in the preparation of these particulars the correctness is not guaranteed and they are intended as a guide only and do not constitute a part of any contract. A prospective buyer is strongly advised to check these particulars and where appropriate and at his own expense to employ a qualified marine surveyor to carry out a survey and/or to have an engine trial conducted which if conducted by Solent Motor Yachts shall not imply any liability on our part.



## Princess V50 – 3 cabin layout



**t: 01489 886663    m: 07917 148807    e: [sales@solentmotoryachts.com](mailto:sales@solentmotoryachts.com)**  
Solent Motor Yachts, Hamble River Boat Yard, Bridge Road, Swanwick, Southampton SO31 7EB

Solent Motor Yachts normally acts as a broker for the vendor who unless otherwise stated is not acting in the course of a business. Whilst every care has been taken in the preparation of these particulars the correctness is not guaranteed and they are intended as a guide only and do not constitute a part of any contract. A prospective buyer is strongly advised to check these particulars and where appropriate and at his own expense to employ a qualified marine surveyor to carry out a survey and/or to have an engine trial conducted which if conducted by Solent Motor Yachts shall not imply any liability on our part.



## Princess V50 – 3 cabin layout



**t: 01489 886663    m: 07917 148807    e: [sales@solentmotoryachts.com](mailto:sales@solentmotoryachts.com)**  
Solent Motor Yachts, Hamble River Boat Yard, Bridge Road, Swanwick, Southampton SO31 7EB

Solent Motor Yachts normally acts as a broker for the vendor who unless otherwise stated is not acting in the course of a business. Whilst every care has been taken in the preparation of these particulars the correctness is not guaranteed and they are intended as a guide only and do not constitute a part of any contract. A prospective buyer is strongly advised to check these particulars and where appropriate and at his own expense to employ a qualified marine surveyor to carry out a survey and/or to have an engine trial conducted which if conducted by Solent Motor Yachts shall not imply any liability on our part.



## Princess V50 – 3 cabin layout

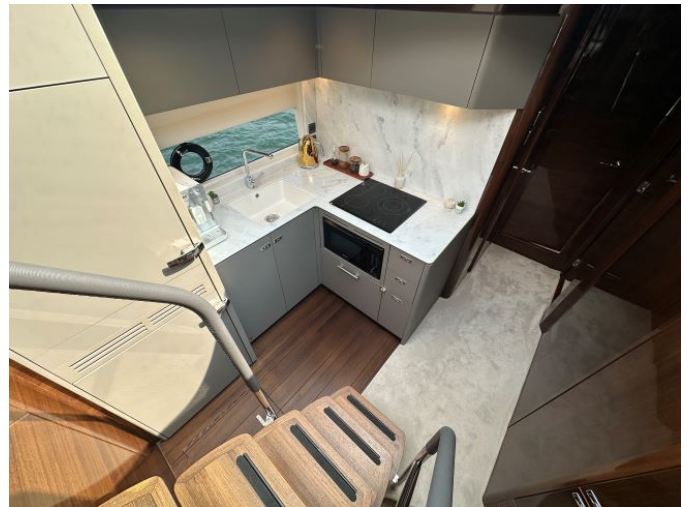
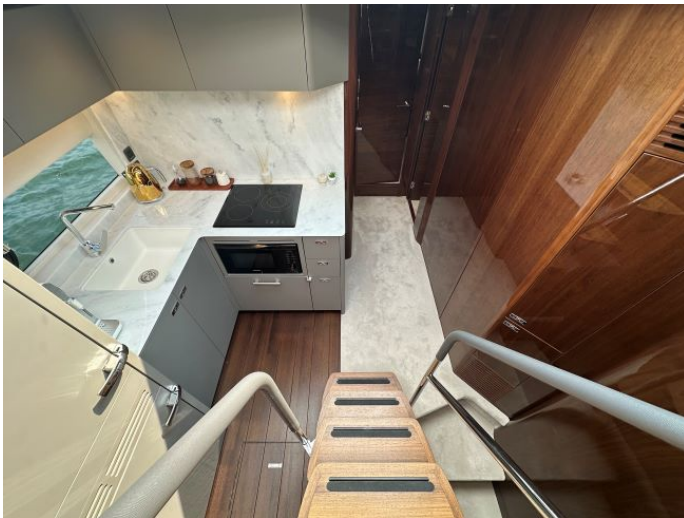


**t: 01489 886663    m: 07917 148807    e: [sales@solentmotoryachts.com](mailto:sales@solentmotoryachts.com)**  
Solent Motor Yachts, Hamble River Boat Yard, Bridge Road, Swanwick, Southampton SO31 7EB

Solent Motor Yachts normally acts as a broker for the vendor who unless otherwise stated is not acting in the course of a business. Whilst every care has been taken in the preparation of these particulars the correctness is not guaranteed and they are intended as a guide only and do not constitute a part of any contract. A prospective buyer is strongly advised to check these particulars and where appropriate and at his own expense to employ a qualified marine surveyor to carry out a survey and/or to have an engine trial conducted which if conducted by Solent Motor Yachts shall not imply any liability on our part.



## Princess V50 – 3 cabin layout



**t: 01489 886663    m: 07917 148807    e: [sales@solentmotoryachts.com](mailto:sales@solentmotoryachts.com)**  
Solent Motor Yachts, Hamble River Boat Yard, Bridge Road, Swanwick, Southampton SO31 7EB

Solent Motor Yachts normally acts as a broker for the vendor who unless otherwise stated is not acting in the course of a business. Whilst every care has been taken in the preparation of these particulars the correctness is not guaranteed and they are intended as a guide only and do not constitute a part of any contract. A prospective buyer is strongly advised to check these particulars and where appropriate and at his own expense to employ a qualified marine surveyor to carry out a survey and/or to have an engine trial conducted which if conducted by Solent Motor Yachts shall not imply any liability on our part.



## Princess V50 – 3 cabin layout



**t: 01489 886663    m: 07917 148807    e: [sales@solentmotoryachts.com](mailto:sales@solentmotoryachts.com)**  
Solent Motor Yachts, Hamble River Boat Yard, Bridge Road, Swanwick, Southampton SO31 7EB

Solent Motor Yachts normally acts as a broker for the vendor who unless otherwise stated is not acting in the course of a business. Whilst every care has been taken in the preparation of these particulars the correctness is not guaranteed and they are intended as a guide only and do not constitute a part of any contract. A prospective buyer is strongly advised to check these particulars and where appropriate and at his own expense to employ a qualified marine surveyor to carry out a survey and/or to have an engine trial conducted which if conducted by Solent Motor Yachts shall not imply any liability on our part.

## Princess V50 – 3 cabin layout



**t: 01489 886663    m: 07917 148807    e: [sales@solentmotoryachts.com](mailto:sales@solentmotoryachts.com)**  
Solent Motor Yachts, Hamble River Boat Yard, Bridge Road, Swanwick, Southampton SO31 7EB

Solent Motor Yachts normally acts as a broker for the vendor who unless otherwise stated is not acting in the course of a business. Whilst every care has been taken in the preparation of these particulars the correctness is not guaranteed and they are intended as a guide only and do not constitute a part of any contract. A prospective buyer is strongly advised to check these particulars and where appropriate and at his own expense to employ a qualified marine surveyor to carry out a survey and/or to have an engine trial conducted which if conducted by Solent Motor Yachts shall not imply any liability on our part.



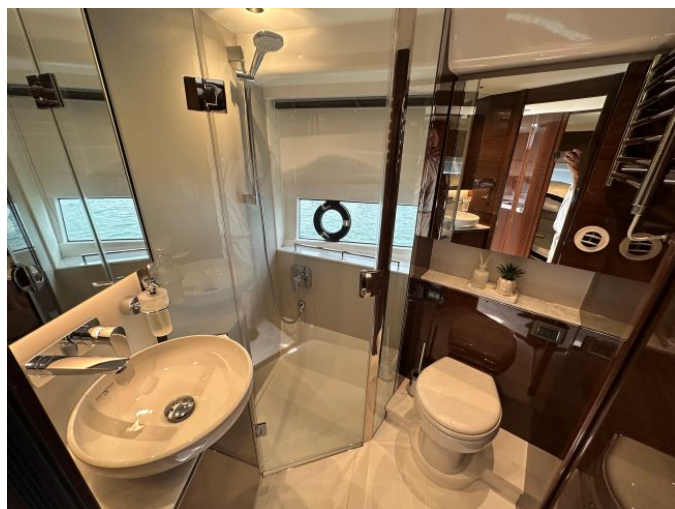
## Princess V50 – 3 cabin layout



**t: 01489 886663    m: 07917 148807    e: [sales@solentmotoryachts.com](mailto:sales@solentmotoryachts.com)**  
Solent Motor Yachts, Hamble River Boat Yard, Bridge Road, Swanwick, Southampton SO31 7EB

Solent Motor Yachts normally acts as a broker for the vendor who unless otherwise stated is not acting in the course of a business. Whilst every care has been taken in the preparation of these particulars the correctness is not guaranteed and they are intended as a guide only and do not constitute a part of any contract. A prospective buyer is strongly advised to check these particulars and where appropriate and at his own expense to employ a qualified marine surveyor to carry out a survey and/or to have an engine trial conducted which if conducted by Solent Motor Yachts shall not imply any liability on our part.

## Princess V50 – 3 cabin layout



**t: 01489 886663    m: 07917 148807    e: [sales@solentmotoryachts.com](mailto:sales@solentmotoryachts.com)**  
Solent Motor Yachts, Hamble River Boat Yard, Bridge Road, Swanwick, Southampton SO31 7EB

Solent Motor Yachts normally acts as a broker for the vendor who unless otherwise stated is not acting in the course of a business. Whilst every care has been taken in the preparation of these particulars the correctness is not guaranteed and they are intended as a guide only and do not constitute a part of any contract. A prospective buyer is strongly advised to check these particulars and where appropriate and at his own expense to employ a qualified marine surveyor to carry out a survey and/or to have an engine trial conducted which if conducted by Solent Motor Yachts shall not imply any liability on our part.



## Princess V50 – 3 cabin layout

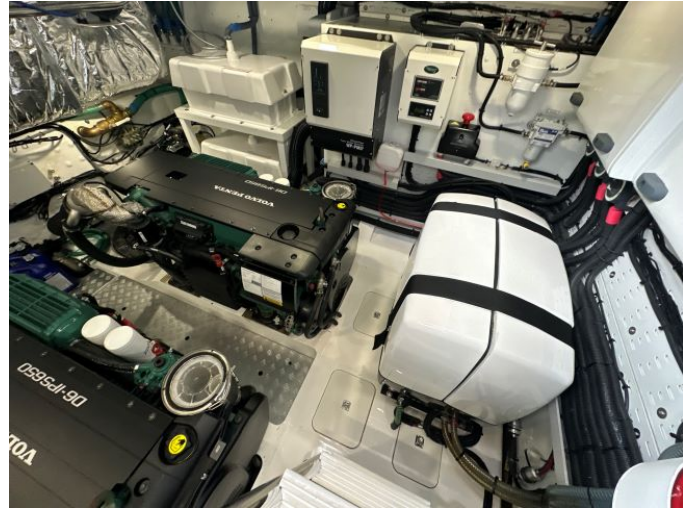


**t: 01489 886663    m: 07917 148807    e: [sales@solentmotoryachts.com](mailto:sales@solentmotoryachts.com)**  
Solent Motor Yachts, Hamble River Boat Yard, Bridge Road, Swanwick, Southampton SO31 7EB

Solent Motor Yachts normally acts as a broker for the vendor who unless otherwise stated is not acting in the course of a business. Whilst every care has been taken in the preparation of these particulars the correctness is not guaranteed and they are intended as a guide only and do not constitute a part of any contract. A prospective buyer is strongly advised to check these particulars and where appropriate and at his own expense to employ a qualified marine surveyor to carry out a survey and/or to have an engine trial conducted which if conducted by Solent Motor Yachts shall not imply any liability on our part.



## Princess V50 – 3 cabin layout



**t: 01489 886663    m: 07917 148807   e: [sales@solentmotoryachts.com](mailto:sales@solentmotoryachts.com)**  
Solent Motor Yachts, Hamble River Boat Yard, Bridge Road, Swanwick, Southampton SO31 7EB

Solent Motor Yachts normally acts as a broker for the vendor who unless otherwise stated is not acting in the course of a business. Whilst every care has been taken in the preparation of these particulars the correctness is not guaranteed and they are intended as a guide only and do not constitute a part of any contract. A prospective buyer is strongly advised to check these particulars and where appropriate and at his own expense to employ a qualified marine surveyor to carry out a survey and/or to have an engine trial conducted which if conducted by Solent Motor Yachts shall not imply any liability on our part.