

Beneteau Swift Trawler 41



YEAR: 2021 model
TYPE: Trawler
LOA: 13.43m (44'1")
BEAM: 4.25m (13'11")
DRAFT: 1.15m (3'9")
WEIGHT: 11,040 Kg
ENGINE: 2 x Volvo Penta
D4 - 270hp
HOURS: 290 approx.
FUEL: Diesel
FUEL TANK: 1,170 litres
WATER TANK: 400 litres
BERTHS: 7

PRINCIPAL FEATURES

New aft cockpit enclosure cover, Rope strippers, Bow and stern thruster with new remote, Teak bathing platform, cockpit and starboard side deck, New upgraded 5KW inverter charger with 3 additional batteries, 3 x Raymarine Axiom GPS/Radar plotters with AIS, Raymarine Autopilot, Raymarine Wind gauge & DSC VHF, TV in Saloon, Electric toilets with fresh water and salt water flush to holding tank, 2 x Eberspacher's for cabin heating throughout, Smartboard monitoring

LYING: Gosport

Reduced from: £449,950

NEW PRICE: £399,950 (tax paid)

Description:

This is a truly excellent opportunity to purchase a stunning low hour 2021 model Beneteau Swift Trawler 41 Fly that is built to seek new horizons...

t: 01489 886663 m: 07917 148807 e: sales@solentmotoryachts.com
Solent Motor Yachts, Hamble River Boat Yard, Bridge Road, Swanwick, Southampton SO31 7EB



Beneteau Swift Trawler 41

The Beneteau Swift Trawler 41 successfully renews the spirit and style of the Beneteau trawler range. Ample living space, comfortable and practical, this new innovative 41-foot powerboat, has an on-board capacity of up to 7 passengers.

The Beneteau Swift Trawler 41 has a fluid and balanced profile, emphasized by a slender flared out hull, which means she cuts perfectly through the sea. Her wheelhouse offers a strikingly generous glazed space, while the fore deck, with its large sun pad and a high protective pulpit make this long-distance cruiser even more distinctive. Her new hull has also been designed for optimum fuel consumption and efficiency,

Brightness, user-friendliness and comfortable living characterize the welcoming yet practical spaces of the Swift Trawler 41. There are lots of innovative solutions making life easy aboard. The aft galley links seamlessly with the cockpit, which has a sliding bench making it easy to get to the swim platform. In the wheelhouse, the pilot seat rotates, allowing eight passengers to sit down in the saloon. The lounge space converts to a comfortable double berth sleeping space, surrounded by a curtain for privacy. Below deck, the three cabins on board bring to 7 the number of passengers the boat can accommodate comfortably on this innovative family cruiser.

Part exchanges may be considered.

New listing with more photos to follow.

Contact Derek or Richard to arrange a viewing as you will not be disappointed.

Specification and equipment:

- Construction: GRP
- Hull Colour: White
- Drive Type: Shaft drive
- Maximum Speed: 19 knots (approx.)
- Cruising Speed: 9 knots (approx.)
- Hull: Semi-Displacement

2 x Volvo Penta D4 - 270hp diesel engines with 290hrs on shaft drives with four-blade propellers

Boat lifted for pre-season maintenance - hull polish, new anodes and antifouling - February 2025

Prop speed to underwater gear

t: 01489 886663 m: 07917 148807 e: sales@solentmotoryachts.com
Solent Motor Yachts, Hamble River Boat Yard, Bridge Road, Swanwick, Southampton SO31 7EB



Beneteau Swift Trawler 41

Ambassador rope strippers

Dual station bow and stern thruster with new remote

Engine room soundproofed with high-density foam (40mm thick)

Air intake for cooling the engine compartment on the port hull plating

Double fuel tank filling cap

Steering system: 2 Rudders - stainless steel, Hydraulic steering

Electric trim tabs

Shore power and cable

Twin battery chargers

Galvonic isolator

New upgraded 5KW inverter/charger with 3 dedicated 300ah Li batteries (2025)

DVB TV antenna

TV in Saloon

Pressurised H&C water system with inline water filter

2 x Eberspacher diesel fired warm air heaters

Beneteau "SEANAPPS" smart technology:

For monitoring the boat's status and receiving alerts as well as maintenance advice via the associated mobile application.

Navionics Platinum Plus Cartridge

Raymarine Axiom 12" MFD to interior helm

2 x Raymarine Axiom 9" MFD to flybridge helm

Raymarine Quantum Radar

Raymarine CAM220 aft-facing camera

Raymarine Autopilot

Raymarine AIS700 Transceiver

Raymarine Ray90 DSC VHF

Raymarine wind vane & anemometer

t: 01489 886663 m: 07917 148807 e: sales@solentmotoryachts.com
Solent Motor Yachts, Hamble River Boat Yard, Bridge Road, Swanwick, Southampton SO31 7EB

Solent Motor Yachts normally acts as a broker for the vendor who unless otherwise stated is not acting in the course of a business. Whilst every care has been taken in the preparation of these particulars the correctness is not guaranteed and they are intended as a guide only and do not constitute a part of any contract. A prospective buyer is strongly advised to check these particulars and where appropriate and at his own expense to employ a qualified marine surveyor to carry out a survey and/or to have an engine trial conducted which if conducted by Solent Motor Yachts shall not imply any liability on our part.



Beneteau Swift Trawler 41

Compass

Electric anchor windlass with 20kg S/S Delta anchor and chain

Solid iroko wood decking to bathing platform, cockpit and starboard side deck

Flybridge wet bar with fridge, sink & waste bin

Sliding side door with direct access to stb side deck with hull door

New aft cockpit enclosure covers with large windows

Automatic fire extinguisher system

Twin station searchlight

Warps and fenders

Accommodation:

SLEEPS SEVEN IN THREE CABINS & SALOON

Alpi Oak interior woodwork

External Marlin Brilliant White Upholstery

2 x Diesel warm air heaters

New carpet to saloon, passageway and cabins (2025)

Beneteau named cutlery, crockery, towels

Beneteau mattress protectors

FLYBRIDGE

White covers for console & seats Retractable stainless steel staircase with teak steps and a polyester hatch. Stainless steel pulpit surrounding aft of flybridge and a grey tinted windscreen. Mast for mounting navigation lights, radar and aerials. Control panel which include electric engine controls, electric windlass control, thrusters and trim tabs. 1 Adjustable pilot seat and 2 places for co-pilot with convertible backrest. Face-to-face seating arrangement, consisting of an L-shaped bench with integrated stowage and a teak table. Speakers. Wetbar with sink, fridge and wastebin

COCKPIT

Locker in cockpit bottom gas piston assisted and lockable. Hot/cold water cockpit shower.

Double starboard transom gate into the cockpit. Swimming platform with rubbing strake.

Ergonomic bathing ladder with hand holds in the bathing platform and Emergency ladder.

PMMA access door at the starboard side deck from the cockpit.

SALOON

Saloon U-shaped seating convertible to double berth with dividing rail and curtains for berth, roman blinds, wood saloon table with table extension, storage cupboards, one large stowage

t: 01489 886663 m: 07917 148807 e: sales@solentmotoryachts.com

Solent Motor Yachts, Hamble River Boat Yard, Bridge Road, Swanwick, Southampton SO31 7EB



Beneteau Swift Trawler 41

drawer. Saloon sliding aft two single disappearing door aft bay with black lacquered aluminium frame, leather sheathed stainless handrail in cockpit deckhead. TV

GALLEY

Galley U-shaped facing the cockpit and saloon. Laminated work top with Nimbus Prima Corian edging. Two stainless sinks with pressurised cold/hot water mixer taps. Electric Galley (oven and hob) 215 litre upright fridge and freezer. Storage, drawers and hand rails. Bin with access from cockpit and galley.

INTERIOR HELM STATION

Clear glass windscreen with anti-reflective coating and black lacquered aluminium frames. Three electric windscreen wipers, windscreen washer, demister. Side windows with black lacquered aluminium frames. Dashboard for navigation electronics. Engine dials. Double USB sockets Controls for electric windlass, bow & stern thruster, navigation lights, electric windscreen wipers, fog horn, electric dual engine control. 6 Steering wheel and compass. Fixed helm seat with storage and handrails, removable floor step, sliding side door with direct access to catwalk.

ACCOMMODATION

Owners cabin forward with island double berth and padded headboard, with storage underneath and stowage on both sides of berth, mirror, hanging locker with lighting, cupboard with shelves, opening hatch with mosquito screen and blind, two hull windows with opening portholes and venetian blinds.

Owners ensuite head to port with mirror, top and bottom cupboard, electric flushing toilet with fresh and salt water, oval washbasin, opening deck hatch with integrated blind, hull porthole, venetian blinds.

Owners separate shower compartment with seat and porthole and teak lining.

VIP cabin to port with two single beds convertible into double bed, padded headboard, cupboards, storage under berth, cubby hole locker, hull window with opening porthole and curtain.

Guest cabin/Storeroom to starboard, single mattress, modular stowage, storage under berth.

Day heads to starboard with mirror, top and bottom cupboard, opening porthole, electric toilet flushing with fresh and salt water, oval washbasin, mixer tap, shower and towel rail.

t: 01489 886663 m: 07917 148807 e: sales@solentmotoryachts.com
Solent Motor Yachts, Hamble River Boat Yard, Bridge Road, Swanwick, Southampton SO31 7EB

Beneteau Swift Trawler 41

Images:



t: 01489 886663 m: 07917 148807 e: sales@solentmotoryachts.com
Solent Motor Yachts, Hamble River Boat Yard, Bridge Road, Swanwick, Southampton SO31 7EB

Solent Motor Yachts normally acts as a broker for the vendor who unless otherwise stated is not acting in the course of a business. Whilst every care has been taken in the preparation of these particulars the correctness is not guaranteed and they are intended as a guide only and do not constitute a part of any contract. A prospective buyer is strongly advised to check these particulars and where appropriate and at his own expense to employ a qualified marine surveyor to carry out a survey and/or to have an engine trial conducted which if conducted by Solent Motor Yachts shall not imply any liability on our part.

Solent
MOTOR YACHTS
on your wavelength



Beneteau Swift Trawler 41



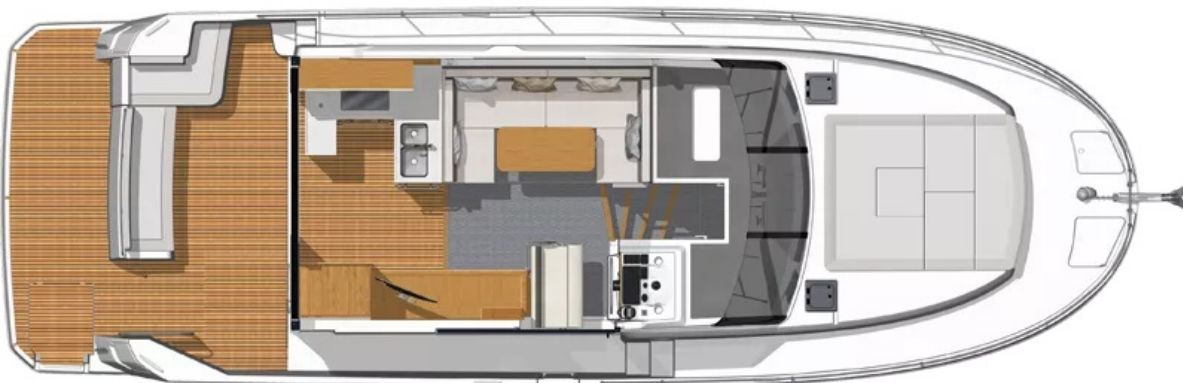
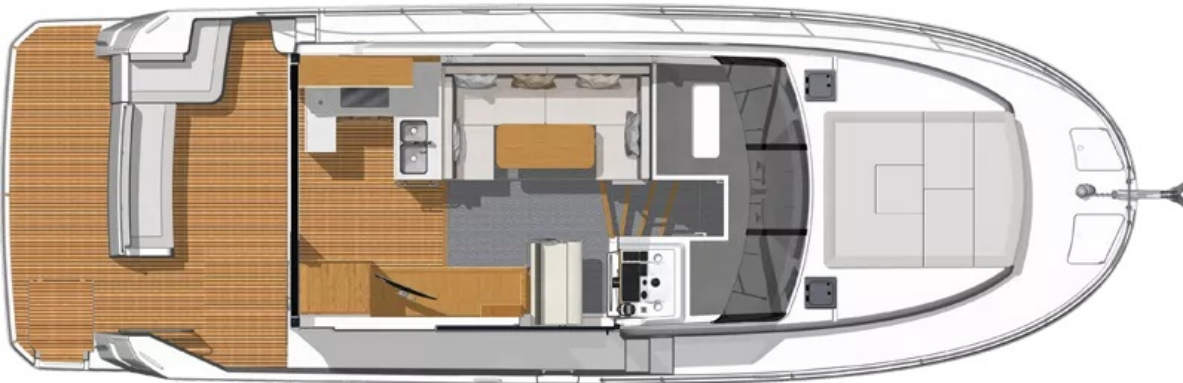
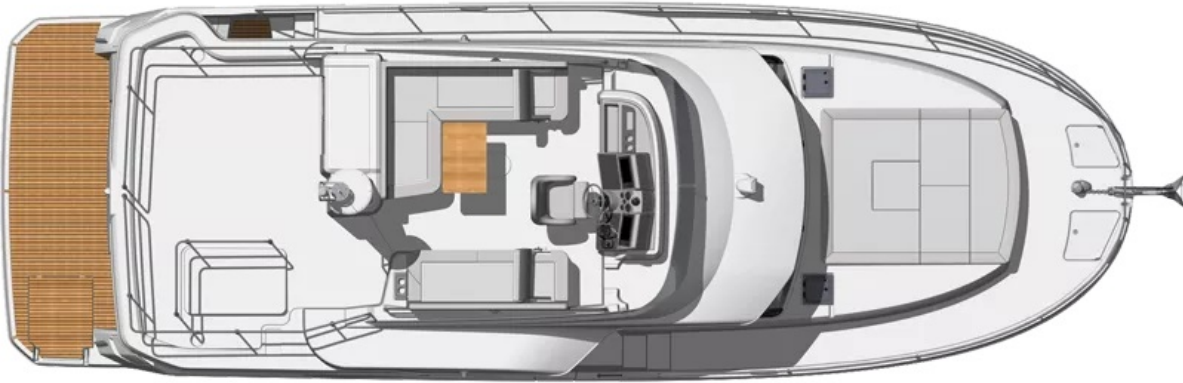
t: 01489 886663 m: 07917 148807 e: sales@solentmotoryachts.com
Solent Motor Yachts, Hamble River Boat Yard, Bridge Road, Swanwick, Southampton SO31 7EB

Solent Motor Yachts normally acts as a broker for the vendor who unless otherwise stated is not acting in the course of a business. Whilst every care has been taken in the preparation of these particulars the correctness is not guaranteed and they are intended as a guide only and do not constitute a part of any contract. A prospective buyer is strongly advised to check these particulars and where appropriate and at his own expense to employ a qualified marine surveyor to carry out a survey and/or to have an engine trial conducted which if conducted by Solent Motor Yachts shall not imply any liability on our part.

Solent
MOTOR YACHTS
on your wavelength



Beneteau Swift Trawler 41



t: 01489 886663 m: 07917 148807 e: sales@solentmotoryachts.com
Solent Motor Yachts, Hamble River Boat Yard, Bridge Road, Swanwick, Southampton SO31 7EB

Solent Motor Yachts normally acts as a broker for the vendor who unless otherwise stated is not acting in the course of a business. Whilst every care has been taken in the preparation of these particulars the correctness is not guaranteed and they are intended as a guide only and do not constitute a part of any contract. A prospective buyer is strongly advised to check these particulars and where appropriate and at his own expense to employ a qualified marine surveyor to carry out a survey and/or to have an engine trial conducted which if conducted by Solent Motor Yachts shall not imply any liability on our part.