

## Beneteau Swift Trawler 30



**YEAR:** 2019  
**TYPE:** Trawler  
**LOA:** 9.99m  
**BEAM:** 3.53m  
**DRAFT:** 1.05m  
**WEIGHT:** 6,000 Kg  
**ENGINE:** 1 x Volvo Penta  
D6 – 380hp  
**HOURS:** 175 approx.  
**FUEL:** Diesel  
**FUEL TANK:** 700 Litres  
**WATER TANK:** 150 Litres  
**BERTHS:** 4

### PRINCIPAL FEATURES

Bow and stern thruster, Rope cutter, Teak bathing platform, cockpit, port side deck, Raymarine es98 MFD in wheelhouse with CPT120 Downvision transducer and linked to Raymarine CAM210 rear facing camera, Raymarine P70 Autopilot, Raymarine VHF 260 with AIS, Webasto diesel fired cabin heating, TV in Saloon, Fusion MS-AV755 Bluetooth stereo with 2 speakers in the wheelhouse and the cockpit, Electric fresh water flush to holding tank, Smartboard monitoring

**LYING:** Hamble River Boat Yard

**PRICE:** £199,950 (tax paid)

### Description:

The Beneteau Swift Trawler 30 is an excellent balance between style and seaworthiness. The smallest of the Swift Trawlers is a live aboard boat. She has many innovations and beats records when it comes to autonomy.

**t: 01489 886663    m: 07917 148807    e: [sales@solentmotoryachts.com](mailto:sales@solentmotoryachts.com)**  
Solent Motor Yachts, Hamble River Boat Yard, Bridge Road, Swanwick, Southampton SO31 7EB



## Beneteau Swift Trawler 30

The Swift Trawler 30's unreservedly stylish, contemporary and yet protective lines make her very distinctive.

Designed for travelling long distances as much as for enjoying anchorages and stopovers, she is nonetheless a very open boat. Incredibly ingenious, the rear cockpit converts into a spacious terrace over the sea. With a small lounge area and driving station, the flybridge is a completely separate living space.

With added modular fittings and opening, the Swift Trawler 30 has opted for a comfortable lifestyle, and lots of space and light to create an airy feel.

She can be adapted to all crew configurations thanks to the foldaway seats, a convertible sofa, and a well-designed table sliding beneath the seats to increase the amount of space in this reception area. She stands out in her category because the one cabin version offers a real shower compartment.

Part exchanges may be considered.

Contact Derek to arrange a viewing as you will not be disappointed.

### Specification and equipment:

- Construction: GRP
- Hull Colour: Pearl grey
- Drive Type: Shaft drive
- Maximum Speed: 20 knots (approx.)
- Cruising Speed: 14/15 knots (approx.)
- Hull: Semi-Displacement

1 x Volvo Penta D6 - 380hp diesel engine with 175hrs on shaft drive with a four blade propellor

Over 200 nautical miles of range at cruising speed 14/15 knots!

Hydraulic steering with hung S/S rudder

Ambassador rope cutter

Engine room soundproofed with 40mm thick high density insulation

Dual station Quick bow and stern thrusters

**t: 01489 886663    m: 07917 148807 e: [sales@solentmotoryachts.com](mailto:sales@solentmotoryachts.com)**  
Solent Motor Yachts, Hamble River Boat Yard, Bridge Road, Swanwick, Southampton SO31 7EB

Solent Motor Yachts normally acts as a broker for the vendor who unless otherwise stated is not acting in the course of a business. Whilst every care has been taken in the preparation of these particulars the correctness is not guaranteed and they are intended as a guide only and do not constitute a part of any contract. A prospective buyer is strongly advised to check these particulars and where appropriate and at his own expense to employ a qualified marine surveyor to carry out a survey and/or to have an engine trial conducted which if conducted by Solent Motor Yachts shall not imply any liability on our part.



## Beneteau Swift Trawler 30

Lenco trim tabs with indicators

### Electrical:

2 x Engine batteries 12 V 50 Ah

2 x Service battery 12 V 140

Inverter 12V/220V 700 VA

Battery charger

Electrical panel 12 V / 220 V

Smart board 12v monitoring

Shore power socket 220 V on transom

8 x 220v sockets including one for the water heater

Interior lighting (Overhead lights, reading lights)

Outside lighting (Navigation lights, Mooring light, Spot cockpit)

Pressurised hot and cold water system

Hot water via calorifier tank heated when engine running or immersion

### Navigation:

Raymarine es98 MFD in wheelhouse with CPT120 Downvision transducer and linked to

Raymarine CAM210 rear facing camera

Raymarine P70 Autopilot

Raymarine VHF 260 with AIS

Compass

All repeated at fly helm

Navigation lights

### Deck:

Teak bathing platform, cockpit and port side deck to side helm door

1000W electric windlass

Anchor chain and warp 65m

Stainless steel bow fitting, bow roller and swing

10 mooring cleats 2 of which are low on the transom

Stainless steel gunwale guards

Enclosed aft cockpit cover

Enlarged aft bathing platform with full width opening transom with twin folding seats

Cockpit locker

Gas cylinder locker

Hot/cold water cockpit shower hose

Cockpit gate in transom

Stainless steel swimming ladder

Mooring warps and fenders

**t: 01489 886663    m: 07917 148807 e: [sales@solentmotoryachts.com](mailto:sales@solentmotoryachts.com)**

Solent Motor Yachts, Hamble River Boat Yard, Bridge Road, Swanwick, Southampton SO31 7EB

Solent Motor Yachts normally acts as a broker for the vendor who unless otherwise stated is not acting in the course of a business. Whilst every care has been taken in the preparation of these particulars the correctness is not guaranteed and they are intended as a guide only and do not constitute a part of any contract. A prospective buyer is strongly advised to check these particulars and where appropriate and at his own expense to employ a qualified marine surveyor to carry out a survey and/or to have an engine trial conducted which if conducted by Solent Motor Yachts shall not imply any liability on our part.



## Beneteau Swift Trawler 30

### **Flybridge:**

Stainless steel ladder with plain solid wood steps  
Stainless steel pulpit surrounding aft of flybridge  
Grey flybridge dodgers  
Great helm and seat covers  
Flybridge seat and helm station covers  
Steering wheel with hydraulic steering  
L-shaped bench seat with fitted storage space  
Console with control panel including: electric engine controls, windlass control, thrusters and trim tabs

### **Accommodations:**

4 berths in 1 cabin plus saloon  
1 x heads and separate shower  
Hot and cold pressurised water  
Diesel fired cabin heating  
Alpi Mahogany interior wood  
Milano oak laminated floors  
Commando Natural upholstery  
Inner wheelhouse curtains  
LED lighting  
Cockpit canvas/transparency covers and privacy screens – Cadet grey  
Saloon:  
Bench convertible into a double bed with 3 drawers  
Removable saloon table  
Side windows, opening, in grey tinted glass  
Storage cupboards  
3 leaved aft window door with black lacquered aluminium frame  
24 inch Samsung tv  
Galley:  
L-shaped galley with gas oven  
2 ring gas hob with glass cover  
2 Stainless steel sinks with cold/hot water mixer tap  
Front opening refrigerator (Supply 220 V / 12 V)  
Cutlery drawer  
Storage  
Forepeak:  
Double island berth (1,99 x 1,52 m)  
2 Closets, one with shelves

**t: 01489 886663    m: 07917 148807    e: [sales@solentmotoryachts.com](mailto:sales@solentmotoryachts.com)**  
Solent Motor Yachts, Hamble River Boat Yard, Bridge Road, Swanwick, Southampton SO31 7EB

Solent Motor Yachts normally acts as a broker for the vendor who unless otherwise stated is not acting in the course of a business. Whilst every care has been taken in the preparation of these particulars the correctness is not guaranteed and they are intended as a guide only and do not constitute a part of any contract. A prospective buyer is strongly advised to check these particulars and where appropriate and at his own expense to employ a qualified marine surveyor to carry out a survey and/or to have an engine trial conducted which if conducted by Solent Motor Yachts shall not imply any liability on our part.

## Beneteau Swift Trawler 30

Large storage space under berths  
1 Opening hatch with blackout blind  
2 Opening hull portholes with blackout blind  
Heads:  
Quiet flush electric toilet  
Washbasin  
Mixer tap  
Upper cupboard (with socket)  
Separate Shower/ Port Storage:  
Shower mixer tap with shower support  
Storage  
Opening porthole  
Helm:  
Full electronics suite  
Side door

### Images:



**t: 01489 886663    m: 07917 148807   e: [sales@solentmotoryachts.com](mailto:sales@solentmotoryachts.com)**  
Solent Motor Yachts, Hamble River Boat Yard, Bridge Road, Swanwick, Southampton SO31 7EB

Solent Motor Yachts normally acts as a broker for the vendor who unless otherwise stated is not acting in the course of a business. Whilst every care has been taken in the preparation of these particulars the correctness is not guaranteed and they are intended as a guide only and do not constitute a part of any contract. A prospective buyer is strongly advised to check these particulars and where appropriate and at his own expense to employ a qualified marine surveyor to carry out a survey and/or to have an engine trial conducted which if conducted by Solent Motor Yachts shall not imply any liability on our part.



## Beneteau Swift Trawler 30



**t: 01489 886663    m: 07917 148807    e: [sales@solentmotoryachts.com](mailto:sales@solentmotoryachts.com)**  
Solent Motor Yachts, Hamble River Boat Yard, Bridge Road, Swanwick, Southampton SO31 7EB

Solent Motor Yachts normally acts as a broker for the vendor who unless otherwise stated is not acting in the course of a business. Whilst every care has been taken in the preparation of these particulars the correctness is not guaranteed and they are intended as a guide only and do not constitute a part of any contract. A prospective buyer is strongly advised to check these particulars and where appropriate and at his own expense to employ a qualified marine surveyor to carry out a survey and/or to have an engine trial conducted which if conducted by Solent Motor Yachts shall not imply any liability on our part.

## Beneteau Swift Trawler 30



**t: 01489 886663    m: 07917 148807    e: [sales@solentmotoryachts.com](mailto:sales@solentmotoryachts.com)**  
Solent Motor Yachts, Hamble River Boat Yard, Bridge Road, Swanwick, Southampton SO31 7EB

Solent Motor Yachts normally acts as a broker for the vendor who unless otherwise stated is not acting in the course of a business. Whilst every care has been taken in the preparation of these particulars the correctness is not guaranteed and they are intended as a guide only and do not constitute a part of any contract. A prospective buyer is strongly advised to check these particulars and where appropriate and at his own expense to employ a qualified marine surveyor to carry out a survey and/or to have an engine trial conducted which if conducted by Solent Motor Yachts shall not imply any liability on our part.



## Beneteau Swift Trawler 30



**t: 01489 886663    m: 07917 148807    e: [sales@solentmotoryachts.com](mailto:sales@solentmotoryachts.com)**  
Solent Motor Yachts, Hamble River Boat Yard, Bridge Road, Swanwick, Southampton SO31 7EB

Solent Motor Yachts normally acts as a broker for the vendor who unless otherwise stated is not acting in the course of a business. Whilst every care has been taken in the preparation of these particulars the correctness is not guaranteed and they are intended as a guide only and do not constitute a part of any contract. A prospective buyer is strongly advised to check these particulars and where appropriate and at his own expense to employ a qualified marine surveyor to carry out a survey and/or to have an engine trial conducted which if conducted by Solent Motor Yachts shall not imply any liability on our part.



## Beneteau Swift Trawler 30



**t: 01489 886663    m: 07917 148807   e: [sales@solentmotoryachts.com](mailto:sales@solentmotoryachts.com)**  
Solent Motor Yachts, Hamble River Boat Yard, Bridge Road, Swanwick, Southampton SO31 7EB

Solent Motor Yachts normally acts as a broker for the vendor who unless otherwise stated is not acting in the course of a business. Whilst every care has been taken in the preparation of these particulars the correctness is not guaranteed and they are intended as a guide only and do not constitute a part of any contract. A prospective buyer is strongly advised to check these particulars and where appropriate and at his own expense to employ a qualified marine surveyor to carry out a survey and/or to have an engine trial conducted which if conducted by Solent Motor Yachts shall not imply any liability on our part.



## Beneteau Swift Trawler 30

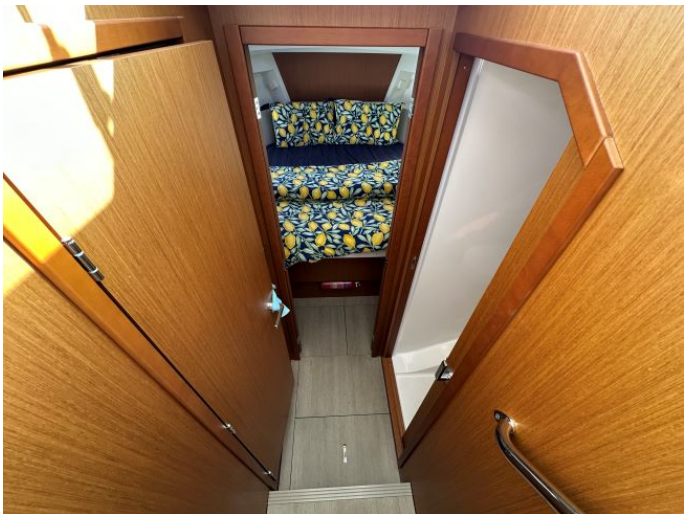


**t: 01489 886663    m: 07917 148807    e: [sales@solentmotoryachts.com](mailto:sales@solentmotoryachts.com)**  
Solent Motor Yachts, Hamble River Boat Yard, Bridge Road, Swanwick, Southampton SO31 7EB

Solent Motor Yachts normally acts as a broker for the vendor who unless otherwise stated is not acting in the course of a business. Whilst every care has been taken in the preparation of these particulars the correctness is not guaranteed and they are intended as a guide only and do not constitute a part of any contract. A prospective buyer is strongly advised to check these particulars and where appropriate and at his own expense to employ a qualified marine surveyor to carry out a survey and/or to have an engine trial conducted which if conducted by Solent Motor Yachts shall not imply any liability on our part.



## Beneteau Swift Trawler 30

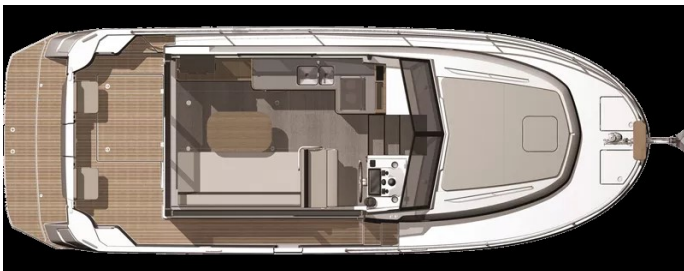
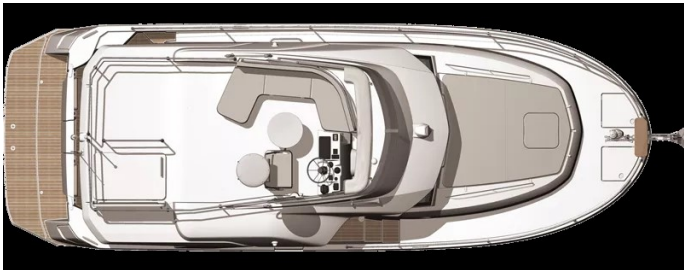


**t: 01489 886663    m: 07917 148807    e: [sales@solentmotoryachts.com](mailto:sales@solentmotoryachts.com)**  
Solent Motor Yachts, Hamble River Boat Yard, Bridge Road, Swanwick, Southampton SO31 7EB

Solent Motor Yachts normally acts as a broker for the vendor who unless otherwise stated is not acting in the course of a business. Whilst every care has been taken in the preparation of these particulars the correctness is not guaranteed and they are intended as a guide only and do not constitute a part of any contract. A prospective buyer is strongly advised to check these particulars and where appropriate and at his own expense to employ a qualified marine surveyor to carry out a survey and/or to have an engine trial conducted which if conducted by Solent Motor Yachts shall not imply any liability on our part.



## Beneteau Swift Trawler 30



**t: 01489 886663    m: 07917 148807    e: [sales@solentmotoryachts.com](mailto:sales@solentmotoryachts.com)**  
Solent Motor Yachts, Hamble River Boat Yard, Bridge Road, Swanwick, Southampton SO31 7EB

Solent Motor Yachts normally acts as a broker for the vendor who unless otherwise stated is not acting in the course of a business. Whilst every care has been taken in the preparation of these particulars the correctness is not guaranteed and they are intended as a guide only and do not constitute a part of any contract. A prospective buyer is strongly advised to check these particulars and where appropriate and at his own expense to employ a qualified marine surveyor to carry out a survey and/or to have an engine trial conducted which if conducted by Solent Motor Yachts shall not imply any liability on our part.