



## Fairline Squadron 58



**YEAR:** 2012

**TYPE:** Flybridge

**LOA:** 58.6'

**BEAM:** 15.7'

**DRAFT:** 4.8'

**WEIGHT:** 27,400 Kg

**ENGINE:** 2 x Volvo  
Penta D13  
EVC 800hp

**HOURS:** 600 approx.

**FUEL:** Diesel

**FUEL TANK:** 541 gallons

**WATER TANK:** 231 gallons

**BERTHS:** 6 + 1 crew

### PRINCIPAL FEATURES

Bow & Stern thruster, Yacht controller remote for engines and thrusters, Fairline tender launch system (new chains), 2.9m letterbox passerelle, Flybridge wet bar with BBQ, Ice maker and Fridge, Flybridge bimini with lights, Teak decking to flybridge, cockpit and bathing platform, 17.5KVA Onan generator, Tropical reverse cycle air-conditioning throughout, Invertor for audio visual, 40" B&O TV with home cinema surround sound system, TVs with DVDs in all cabins, Washing machine, Dishwasher, Electric fresh water flush heads to holding tanks with macerator discharge

MCA Coded for charter

**LYING:** Ocean Village, Southampton

**PRICE:** £674,950 (tax paid)

**t: 01489 886663**

**m: 07917 148807 e: [sales@solentmotoryachts.com](mailto:sales@solentmotoryachts.com)**

Solent Motor Yachts, Hamble River Boat Yard, Bridge Road, Swanwick, Southampton SO31 7EB



## Fairline Squadron 58

### Description:

Approach the Fairline Squadron 58 from any angle and the avant-garde design and attention to detail simply make you want to explore further. For this is a beautiful yacht built around sociability. She is fitted with two Volvo Penta D13-800hp engines and a huge list of extras making her ideal for cruising the South Coast or the Med in style and comfort.

Benefitting from being MCA coded she is also a fabulous opportunity to get your boat to work for you and cover the running costs and more.....

Part exchanges may be considered.

Contact Derek to arrange a viewing today.

### Specification and equipment:

- Construction: GRP
- Hull Colour: Navy
- Drive Type: Shaft drive
- Maximum Speed: 30 knots (approx.)
- Cruising Speed: 24 knots (approx.)
- Hull: Planing

2 x Volvo Penta D13-800hp EVC engines with approx. 600hrs

Yacht controller remote for engines and thrusters (with spare remote)

Side access door by internal helm

Engines and gearboxes last serviced - August 2025

New anti-foul, anodes, shafts and props burnished – August 2025

Bow and Stern thrusters - new stern thruster motor May 2022

Windscreen washers & wipers

Windscreen demisters

Underwater lights (4 in total)

Trim tabs

**t: 01489 886663    m: 07917 148807 e: [sales@solentmotoryachts.com](mailto:sales@solentmotoryachts.com)**  
Solent Motor Yachts, Hamble River Boat Yard, Bridge Road, Swanwick, Southampton SO31 7EB

Solent Motor Yachts normally acts as a broker for the vendor who unless otherwise stated is not acting in the course of a business. Whilst every care has been taken in the preparation of these particulars the correctness is not guaranteed and they are intended as a guide only and do not constitute a part of any contract. A prospective buyer is strongly advised to check these particulars and where appropriate and at his own expense to employ a qualified marine surveyor to carry out a survey and/or to have an engine trial conducted which if conducted by Solent Motor Yachts shall not imply any liability on our part.



## Fairline Squadron 58

Shore power & twin cables

Battery charger

Invertor to run audio visual

17.5 kva Onan generator (hrs TBC - serviced Sept 2023)

Tropical reverse cycle air-conditioning throughout

Additional Eberspacher diesel cabin heating

Hi-Lo 40" B&O TV with home cinema surround sound system

TVs with DVDs in Master, Fore and Twin cabins

Dishwasher in galley

Washer dryer in aft crew cabin

High speed magnetic compass

Twin Garmin 5012 touchscreen GPS/radar plotters

Garmin GHP10 autopilot

Garmin GMI10 depth and speed

New Garmin DSC VHF

All repeated at both helms

Teak bathing platform, cockpit, flybridge, flybridge steps and side decks

Flybridge wet bar with griddle, icemaker, fridge, sink and storage

Additional flybridge GRP locker with fridge and storage

Blue exterior and side deck mood lighting

2.9m letterbox passerelle with remote

Fairline tender launch system with fold out dinghy chocks (new chains fitted June 2022)

2017 Williams 325 Turbo Jet - carbon black tubes, fusion and cover (may be included STO)

Self stowing through-hull Delta anchor and chain

Electric anchor winch with deck & helm controls

Stern capstan mooring winches

Cockpit enclosure with windows

Flybridge furniture covers

**t: 01489 886663    m: 07917 148807 e: [sales@solentmotoryachts.com](mailto:sales@solentmotoryachts.com)**

Solent Motor Yachts, Hamble River Boat Yard, Bridge Road, Swanwick, Southampton SO31 7EB

Solent Motor Yachts normally acts as a broker for the vendor who unless otherwise stated is not acting in the course of a business. Whilst every care has been taken in the preparation of these particulars the correctness is not guaranteed and they are intended as a guide only and do not constitute a part of any contract. A prospective buyer is strongly advised to check these particulars and where appropriate and at his own expense to employ a qualified marine surveyor to carry out a survey and/or to have an engine trial conducted which if conducted by Solent Motor Yachts shall not imply any liability on our part.



## Fairline Squadron 58

Flybridge tonneau cover  
Flybridge bimini with downlights  
Fore deck sunpads  
Stainless steel and teak handgrab rails  
Telescopic boarding ladder  
Transom gate  
LED ceiling lights throughout  
Navigation lights  
Automatic fire extinguisher (engine bay)  
Manual fire extinguishers  
Remote control searchlight  
Automatic & manual bilge pumps  
Twin horns  
Ensign & staff  
Fenders & warps

### **Accommodation:**

Walnut satin and wenge gloss interior woodwork with cream leather upholstery and velvet mink carpets

### **SALOON**

Spacious saloon with large C shaped seating to port upholstered in cream leather opposite the entertainment unit with Hi-Lo 40" B&O TV and cinema surround sound system.

Upper L shaped dinette to starboard upholstered in cream leather opposite the fully quipped galley to port consisting of electric ceramic halogen hob, extractor fan, integrated waste bin, microwave combi oven and grill, fridge with freezer compartment, additional drawer fridge, dishwasher, sink with h&c mixer tap and plenty of storage.

### **HELM**

Twin adjustable helm and co-pilot seats, all engine and navigational controls within easy reach, main control panel with battery switches.

**t: 01489 886663    m: 07917 148807   e: [sales@solentmotoryachts.com](mailto:sales@solentmotoryachts.com)**  
Solent Motor Yachts, Hamble River Boat Yard, Bridge Road, Swanwick, Southampton SO31 7EB

Solent Motor Yachts normally acts as a broker for the vendor who unless otherwise stated is not acting in the course of a business. Whilst every care has been taken in the preparation of these particulars the correctness is not guaranteed and they are intended as a guide only and do not constitute a part of any contract. A prospective buyer is strongly advised to check these particulars and where appropriate and at his own expense to employ a qualified marine surveyor to carry out a survey and/or to have an engine trial conducted which if conducted by Solent Motor Yachts shall not imply any liability on our part.





## Fairline Squadron 58

### ACCESS TO THE CABINS

The lower deck is accessed via a beautiful spiral staircase with the main fuse boards and additional storage concealed in the wall.

### MASTER CABIN

Master mid stateroom with quadruple portrait feature windows, large walk around double berth, twin bedside tables and plenty of storage.

LCD TV above storage unit to starboard with plenty of storage throughout

Access to en-suite bathroom

### MASTER EN-SUITE

Opposite the main berth, the unique head has an open plan with separate electric flush freshwater toilet compartment and full standing height shower with solid teak compartment for and aft of the large hand basin with hot & cold pressurised water

### FORWARD STATEROOM

Large island double berth with drawer beneath and bedside storage in overhead lockers & twin wardrobes. En-suite access to day head

### STARBOARD GUEST CABIN

Full length twin berths with wardrobe and plenty of stowage

### DAY HEADS

Electric flush freshwater toilet, hand basin and storage, separate shower cubicle with automatic shower tray pump out system

### CREW CABIN (AFT)

Access from cockpit, single aft berth with plenty of storage and separate en-suite head with electric flush freshwater head and hand basin. Large aft facing window with 2 open ports towards the cockpit.

### COCKPIT

Spacious cockpit with aft bench seat for 4, space for large table and chairs, lazzerette and engine access via cockpit sole.

### FLYBRIDGE

Beige upholstery with large aft seating and table that converts to cushioned sunbathing area. Twin adjustable helm and co-pilot seats with all the navigation and engine instrumentation repeated.

**t: 01489 886663    m: 07917 148807   e: [sales@solentmotoryachts.com](mailto:sales@solentmotoryachts.com)**  
Solent Motor Yachts, Hamble River Boat Yard, Bridge Road, Swanwick, Southampton SO31 7EB

Solent Motor Yachts normally acts as a broker for the vendor who unless otherwise stated is not acting in the course of a business. Whilst every care has been taken in the preparation of these particulars the correctness is not guaranteed and they are intended as a guide only and do not constitute a part of any contract. A prospective buyer is strongly advised to check these particulars and where appropriate and at his own expense to employ a qualified marine surveyor to carry out a survey and/or to have an engine trial conducted which if conducted by Solent Motor Yachts shall not imply any liability on our part.



## Fairline Squadron 58

Flybridge wet bar with BBQ, fridge, sink and storage

Flybridge bimini and sun bathing pads around the helm station

### Images:



**t: 01489 886663    m: 07917 148807   e: [sales@solentmotoryachts.com](mailto:sales@solentmotoryachts.com)**  
Solent Motor Yachts, Hamble River Boat Yard, Bridge Road, Swanwick, Southampton SO31 7EB

Solent Motor Yachts normally acts as a broker for the vendor who unless otherwise stated is not acting in the course of a business. Whilst every care has been taken in the preparation of these particulars the correctness is not guaranteed and they are intended as a guide only and do not constitute a part of any contract. A prospective buyer is strongly advised to check these particulars and where appropriate and at his own expense to employ a qualified marine surveyor to carry out a survey and/or to have an engine trial conducted which if conducted by Solent Motor Yachts shall not imply any liability on our part.

## Fairline Squadron 58



**t: 01489 886663    m: 07917 148807   e: [sales@solentmotoryachts.com](mailto:sales@solentmotoryachts.com)**  
Solent Motor Yachts, Hamble River Boat Yard, Bridge Road, Swanwick, Southampton SO31 7EB

Solent Motor Yachts normally acts as a broker for the vendor who unless otherwise stated is not acting in the course of a business. Whilst every care has been taken in the preparation of these particulars the correctness is not guaranteed and they are intended as a guide only and do not constitute a part of any contract. A prospective buyer is strongly advised to check these particulars and where appropriate and at his own expense to employ a qualified marine surveyor to carry out a survey and/or to have an engine trial conducted which if conducted by Solent Motor Yachts shall not imply any liability on our part.





## Fairline Squadron 58



**t: 01489 886663    m: 07917 148807    e: [sales@solentmotoryachts.com](mailto:sales@solentmotoryachts.com)**  
Solent Motor Yachts, Hamble River Boat Yard, Bridge Road, Swanwick, Southampton SO31 7EB

Solent Motor Yachts normally acts as a broker for the vendor who unless otherwise stated is not acting in the course of a business. Whilst every care has been taken in the preparation of these particulars the correctness is not guaranteed and they are intended as a guide only and do not constitute a part of any contract. A prospective buyer is strongly advised to check these particulars and where appropriate and at his own expense to employ a qualified marine surveyor to carry out a survey and/or to have an engine trial conducted which if conducted by Solent Motor Yachts shall not imply any liability on our part.



## Fairline Squadron 58



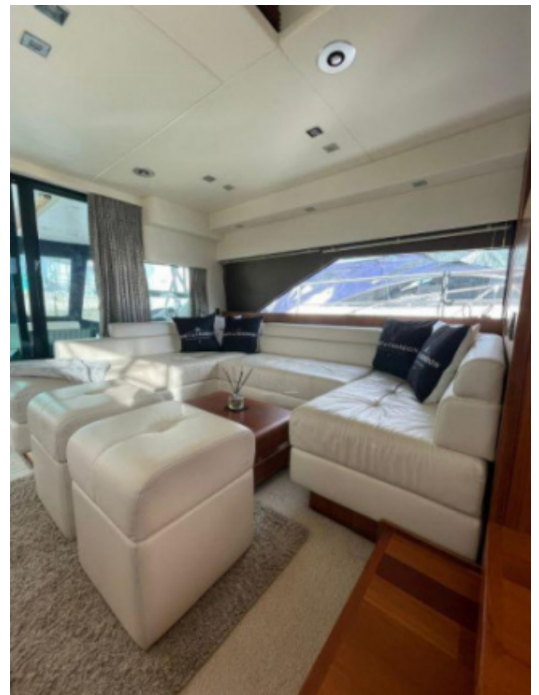
**t: 01489 886663    m: 07917 148807    e: [sales@solentmotoryachts.com](mailto:sales@solentmotoryachts.com)**  
Solent Motor Yachts, Hamble River Boat Yard, Bridge Road, Swanwick, Southampton SO31 7EB

Solent Motor Yachts normally acts as a broker for the vendor who unless otherwise stated is not acting in the course of a business. Whilst every care has been taken in the preparation of these particulars the correctness is not guaranteed and they are intended as a guide only and do not constitute a part of any contract. A prospective buyer is strongly advised to check these particulars and where appropriate and at his own expense to employ a qualified marine surveyor to carry out a survey and/or to have an engine trial conducted which if conducted by Solent Motor Yachts shall not imply any liability on our part.





## Fairline Squadron 58



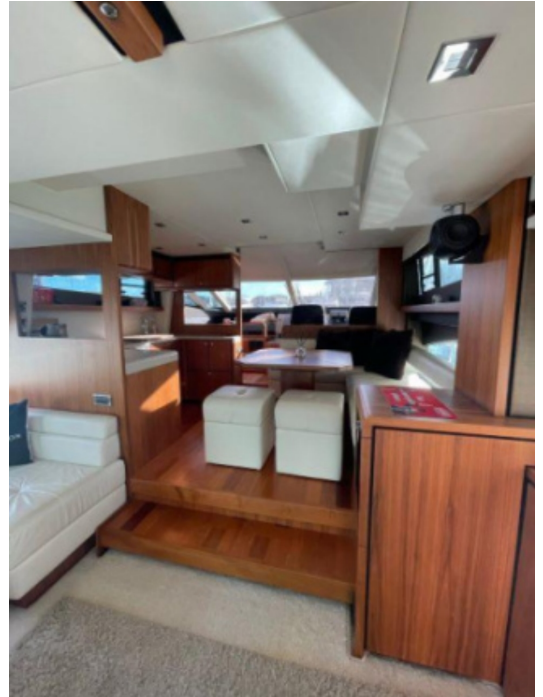
**t: 01489 886663    m: 07917 148807    e: [sales@solentmotoryachts.com](mailto:sales@solentmotoryachts.com)**  
Solent Motor Yachts, Hamble River Boat Yard, Bridge Road, Swanwick, Southampton SO31 7EB

Solent Motor Yachts normally acts as a broker for the vendor who unless otherwise stated is not acting in the course of a business. Whilst every care has been taken in the preparation of these particulars the correctness is not guaranteed and they are intended as a guide only and do not constitute a part of any contract. A prospective buyer is strongly advised to check these particulars and where appropriate and at his own expense to employ a qualified marine surveyor to carry out a survey and/or to have an engine trial conducted which if conducted by Solent Motor Yachts shall not imply any liability on our part.





## Fairline Squadron 58



**t: 01489 886663    m: 07917 148807    e: [sales@solentmotoryachts.com](mailto:sales@solentmotoryachts.com)**  
Solent Motor Yachts, Hamble River Boat Yard, Bridge Road, Swanwick, Southampton SO31 7EB

Solent Motor Yachts normally acts as a broker for the vendor who unless otherwise stated is not acting in the course of a business. Whilst every care has been taken in the preparation of these particulars the correctness is not guaranteed and they are intended as a guide only and do not constitute a part of any contract. A prospective buyer is strongly advised to check these particulars and where appropriate and at his own expense to employ a qualified marine surveyor to carry out a survey and/or to have an engine trial conducted which if conducted by Solent Motor Yachts shall not imply any liability on our part.



## Fairline Squadron 58



**t: 01489 886663    m: 07917 148807   e: [sales@solentmotoryachts.com](mailto:sales@solentmotoryachts.com)**  
Solent Motor Yachts, Hamble River Boat Yard, Bridge Road, Swanwick, Southampton SO31 7EB

Solent Motor Yachts normally acts as a broker for the vendor who unless otherwise stated is not acting in the course of a business. Whilst every care has been taken in the preparation of these particulars the correctness is not guaranteed and they are intended as a guide only and do not constitute a part of any contract. A prospective buyer is strongly advised to check these particulars and where appropriate and at his own expense to employ a qualified marine surveyor to carry out a survey and/or to have an engine trial conducted which if conducted by Solent Motor Yachts shall not imply any liability on our part.





## Fairline Squadron 58

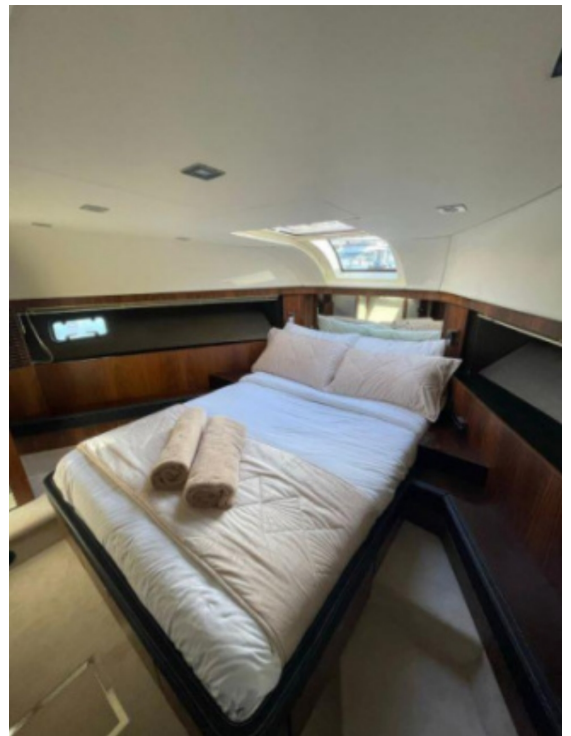
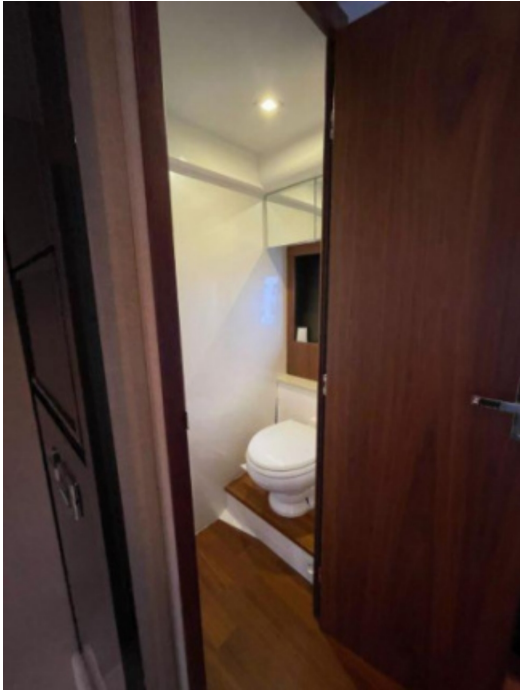


**t: 01489 886663    m: 07917 148807   e: [sales@solentmotoryachts.com](mailto:sales@solentmotoryachts.com)**  
Solent Motor Yachts, Hamble River Boat Yard, Bridge Road, Swanwick, Southampton SO31 7EB

Solent Motor Yachts normally acts as a broker for the vendor who unless otherwise stated is not acting in the course of a business. Whilst every care has been taken in the preparation of these particulars the correctness is not guaranteed and they are intended as a guide only and do not constitute a part of any contract. A prospective buyer is strongly advised to check these particulars and where appropriate and at his own expense to employ a qualified marine surveyor to carry out a survey and/or to have an engine trial conducted which if conducted by Solent Motor Yachts shall not imply any liability on our part.



## Fairline Squadron 58

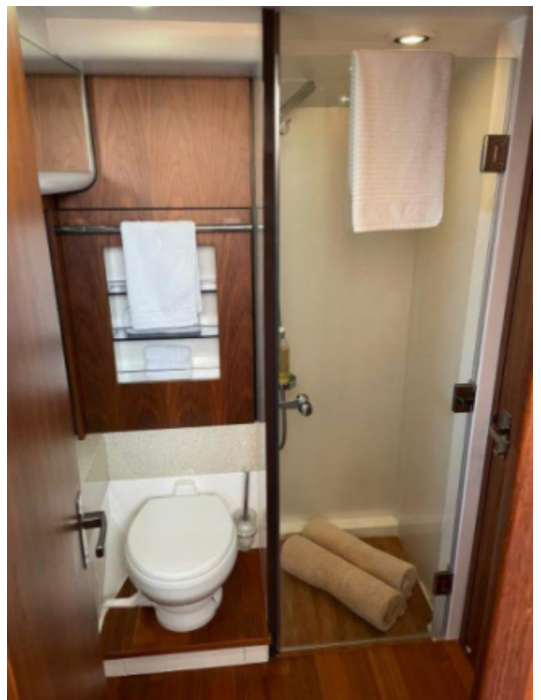


**t: 01489 886663    m: 07917 148807    e: [sales@solentmotoryachts.com](mailto:sales@solentmotoryachts.com)**  
Solent Motor Yachts, Hamble River Boat Yard, Bridge Road, Swanwick, Southampton SO31 7EB

Solent Motor Yachts normally acts as a broker for the vendor who unless otherwise stated is not acting in the course of a business. Whilst every care has been taken in the preparation of these particulars the correctness is not guaranteed and they are intended as a guide only and do not constitute a part of any contract. A prospective buyer is strongly advised to check these particulars and where appropriate and at his own expense to employ a qualified marine surveyor to carry out a survey and/or to have an engine trial conducted which if conducted by Solent Motor Yachts shall not imply any liability on our part.



## Fairline Squadron 58



**t: 01489 886663    m: 07917 148807   e: [sales@solentmotoryachts.com](mailto:sales@solentmotoryachts.com)**  
Solent Motor Yachts, Hamble River Boat Yard, Bridge Road, Swanwick, Southampton SO31 7EB

Solent Motor Yachts normally acts as a broker for the vendor who unless otherwise stated is not acting in the course of a business. Whilst every care has been taken in the preparation of these particulars the correctness is not guaranteed and they are intended as a guide only and do not constitute a part of any contract. A prospective buyer is strongly advised to check these particulars and where appropriate and at his own expense to employ a qualified marine surveyor to carry out a survey and/or to have an engine trial conducted which if conducted by Solent Motor Yachts shall not imply any liability on our part.



## Fairline Squadron 58



**t: 01489 886663    m: 07917 148807   e: [sales@solentmotoryachts.com](mailto:sales@solentmotoryachts.com)**  
Solent Motor Yachts, Hamble River Boat Yard, Bridge Road, Swanwick, Southampton SO31 7EB

Solent Motor Yachts normally acts as a broker for the vendor who unless otherwise stated is not acting in the course of a business. Whilst every care has been taken in the preparation of these particulars the correctness is not guaranteed and they are intended as a guide only and do not constitute a part of any contract. A prospective buyer is strongly advised to check these particulars and where appropriate and at his own expense to employ a qualified marine surveyor to carry out a survey and/or to have an engine trial conducted which if conducted by Solent Motor Yachts shall not imply any liability on our part.