

Mainship 390 Trawler



YEAR: 1998
TYPE: Flybridge
LOA: 12.12m (39'9")
BEAM: 4.32m (14'2")
DRAFT: 1.12m (3'8")
WEIGHT: 9,988 Kg
ENGINE: 2 x Volvo Penta
TAMD41P - 200hp
HOURS: 2,060 approx
FUEL: Diesel
FUEL TANK: 1,135 litres
WATER TANK: 492 litres
BERTHS: 4

PRINCIPAL FEATURES

Bow thrusters, Rope cutters, Mastervolt inverter, Rutland 500w wind generator, 2 x 100w solar panels, Raymarine E120W & E90W GPS/Radar chart plotters, Additional Raymarine Dragonfly fishfinder, Autohelm ST5000+ autopilot, AIS & DSC VHF, Diesel fired cabin heating, CD/Radio with internal and external speakers, TV, Digital yacht 4G WiFi router

LYING: Kemps Quay, Southampton

PRICE: £84,950 (tax paid)

t: 01489 886663 m: 07917 148807 e: sales@solentmotoryachts.com

Solent Motor Yachts, Hamble River Boat Yard, Bridge Road, Swanwick, Southampton SO31 7EB



Mainship 390 Trawler

Description:

The Mainship 390 Trawler is a purposeful looking boat the high bulwarks and heavily flared forward hull sections make her instantly recognisable. With a 'cods head' hull shaped she carries her maximum beam well forward creating a shoulder with her flared bow creating an easier motion in a sea way whilst repelling much of the spray. A comfortable displacement cruiser she will comfortably cruise at 8kts. The accommodation provides comfortable living for two couples with two double cabins. Her interior design with an open plan saloon using moveable items of furniture was arguably well ahead of its time on the late 90's.

Contact Derek or Richard to arrange a viewing as you will not be disappointed.

Specification and equipment:

- Construction: GRP
- Hull Colour: White
- Drive Type: Shaft drive
- Maximum Speed: 15 knots (approx.)
- Cruising Speed: 8 knots (approx.)
- Hull: Displacement

Construction

Hull Construction:

Single piece GRP moulded hull.

Traditional hand consolidated laminate using chopped strand and woven glass cloth.

GRP formed structural members laminated as part of hull.

GRP formed engine beds forming longitudinal stringers as part of hull.

Plywood bulkheads glassed to hull.

Original white gelcoat finish with blue boot topping.

Blue antifouling applied to hull

Deck & Superstructure Construction:

GRP moulded deck incorporating raised bulwarks, coachroof and deck house superstructure and self-draining cockpit.

GRP moulded flybridge roof.

GRP moulded non-slip texture panels to finish side decks, cockpit and flybridge roof.

Original white gelcoat finish.

Keel & Rudder:

Long central keel, terminating forward of propellers.

t: 01489 886663 m: 07917 148807 e: sales@solentmotoryachts.com

Solent Motor Yachts, Hamble River Boat Yard, Bridge Road, Swanwick, Southampton SO31 7EB



Mainship 390 Trawler

Twin stainless steel plate rudders.

MACHINERY

Engine & Gearbox:

Twin Volvo Penta TAMD 41P.

2 x 200HP at 3,800RPM.

6 cylinder, turbo charged, intercooled, indirectly cooled.

Volvo Penta hydraulic reversing marine gearbox.

Lower helm station with RPM, Oil Pressure, Coolant Temperature, Volt Meter and fuel tank gauges.

Racor fuel filters for both engines.

Dual station, dual lever engine controls.

HMI exhaust temperature alarm, alarm units at both helm stations.

Maintenance & Performance:

Oil and filters replaced August 2025, approximately 2 hours run since.

Recorded engine running hours approximately 2060 hours.

Cruising speed 8kts.

Max Speed 15kts.

Fuel consumption 5 l/hr @ 6 kts, 10 l/hr @ 10 kts.

Propulsion & Steering:

Stainless steel prop shafts.

Flexibly mounts packing type stern glands.

Rope cutters.

Hydraulic, dual station steering system.

Emergency tiller.

Bow Thruster:

Sidepower bow thruster with dual station controls, mounted in tunnel (2018).

Autopilot:

Autohelm ST5000+ control head at lower and flybridge helm stations.

Raymarine hydraulic drive system with 12VDC pump.

Trim Tabs:

Bennett trim tab system.

Dual station, rocker switch type controls.

t: 01489 886663 m: 07917 148807 e: sales@solentmotoryachts.com

Solent Motor Yachts, Hamble River Boat Yard, Bridge Road, Swanwick, Southampton SO31 7EB



Mainship 390 Trawler

ELECTRICAL SYSTEMS

Voltage systems:

12V DC onboard power system.
230V AC shore power / generator supply.

Shore Power:

Dual 32amp shore power connection points.
Single extension lead to connect to shore power supply, with electric meter.
Dual 230V AC circuits with independent supplies and RCD protection.
Voltmeter, Ammeter and polarity indicator for both circuits.
Ring main, 6 gallon water heater, battery charger, microwave, coffee maker, kettle and toaster.

Renewable Energy:

Marlec Hybrid Generation System.
Rutland 1200 wind generator max output 500W.
2 x Alpex AL100 solar panels.
Rutland HRDi/1200 monitor and remote display.

Battery Banks:

Engine Batteries – 2 x 12V DC 125 Ah (April 2026)
Domestic Batteries – 2 x 12V DC 120 Ah (September 2023) 3 Years Warranty
Bow Thruster Batteries – 2 x 12V DC
Heater Batteries – 2 x 12V DC (1 Spare)

Alternator:

Single engine driven alternator on each engine.
Each alternator outputting 12V DC, 60 AMP.

Battery Charger:

Main Battery Charger – Victron Phoenix 12/50. 230VA-12VDC
Heater Battery Charger - Victron Blue Smart Charger 12/17. 230VAC – 12VDC. (2020)
Bow Thruster Charger
Heater Battery Charger

Invertor:

Mastervolt Mass 12/1200
12V DC-230V AC sine wave

Battery Monitor:

Mastervolt BATMAN display

t: 01489 886663 m: 07917 148807 e: sales@solentmotoryachts.com
Solent Motor Yachts, Hamble River Boat Yard, Bridge Road, Swanwick, Southampton SO31 7EB



Mainship 390 Trawler

General:

12V Auxiliary sockets in saloon, port cabin and forward cabin.
230V AC sockets in saloon, port cabin and forward cabin.

PLUMBING

Fresh Water:

Pressurised hot and cold water system.
Mixer taps in galley and heads.
Shower stall in heads.
Deck shower aft.
Deck wash system.

Bilge Pumps:

Electric bilge pumps – 3 pumps all with manual and auto switching.
Electric bilge pump in swimming platform – switch beside battery
Manual bilge pump located below stairs.

TANKAGE

Fuel:

Two diesel tanks - Approximate capacity 1135 l.

Fresh Water:

3 x fresh water tanks - Approximate capacity 490 l.

Holding Tank:

Plastic holding tank in engine space - Approximate capacity 135 l.

NAVIGATION & COMMUNICATION EQUIPMENT

Flybridge:

Autohelm ST80 Masterview displaying : SOG, wind, depth and coarse heading.
Plotter/Radar – E90W display with Raymarine digital radar scanner.
Magnetic Compass.

Below Decks:

Autohelm ST80 Masterview displaying : SOG, wind, depth and coarse heading.
Plotter 1 – Raymarine Dragonfly 7 plotter/CHIRP down vision fishfinder (2018).
Plotter/Radar – Raymarine E120W display with Raymarine digital radar scanner.
Magnetic Compass.

t: 01489 886663 m: 07917 148807 e: sales@solentmotoryachts.com
Solent Motor Yachts, Hamble River Boat Yard, Bridge Road, Swanwick, Southampton SO31 7EB



Mainship 390 Trawler

Communications Equipment:

AIS – Digital Yacht AIS2000 system (2020). Displays on both Raymarine displays.
DSC VHF – Simrad RS87 with dual control stations (2018).
Navtex – ICS NAV4 Navtex Plus.
Stainless Steel Horns, activated from either helm station (2018).

DOMESTIC EQUIPMENT

Galley:

Corrian worktop.
Single large stainless steel sink with mixer tap.
Galley Stove – Princess 3 burner and oven gas cooker, chopping board to fit over cooker top.
Microwave Oven – Electrolux Compact 600W.
Fridge/Freezer - Nova Kool RFU6200 170l fridge / 71l freezer below, 12V DC / 230V AC.
Coffee Maker - Black & Decker.
Kettle.
Toaster.

Heads:

Manual flushing marine toilet (New 2023).
Mixer tap and wash hand basin.
Dedicated shower head and walk-in shower stall.

Heating & Ventilation:

Chinese Diesel Heater blown air heating system.
Thermostatic cabin controller.
Heated air outlets in saloon, heads and cabins.

Lighting:

LED downlighters throughout accommodation space, bulbs all replaced 2020.
LED Reading lights above bunks, bulbs replaced 2025.
Courtesy lighting on steps to fly bridge.

Entertainment:

Ferguson 22" flat screen TV + DVD in forward cabin.
Pioneer DEH-S120UB CD/Radio unit in saloon (April 2026)
Speakers for radio in saloon only
Internet – 4G Connect Wifi (Vodafone 5G Connection)

t: 01489 886663 m: 07917 148807 e: sales@solentmotoryachts.com
Solent Motor Yachts, Hamble River Boat Yard, Bridge Road, Swanwick, Southampton SO31 7EB



Mainship 390 Trawler

General:

Insulated window and portlight coverings, fitting inside windows, preventing excess condensation if living aboard in winter (2020).

ACCOMMODATION

Summary of Accommodation:

- Open plan saloon with moveable furnishings, including:
 - Galley
 - Helm station
- Two double cabins.
- Single heads including shower cubicle, with en-suite access to forward cabin.

Accommodation Finish:

Joinery work of teak veneered ply wood with solid teak trims.

Corrian worktop in galley.

Corrian counter tops in saloon.

Mould GRP headlining with inlaid carpet covered panels.

Fitted carpet on soles throughout interior. (Carpets replaced July 2025)

Description of Accommodation from Forward:

Forward Cabin:

Double cabin with en-suite heads access.

Double berth located centrally forward, with counters at bunk level outboard forward.

Storage units with shelved and hanging lockers aft port and starboard with counter top above.

Drawer storage beneath aft end of berth. Further storage below berth.

Hanging full-length mirror on door.

Opening portlights port and starboard.

Opening deck hatch.

Port Cabin:

Double cabin with double berth running aft.

Standing room forward of bunk.

Storage locker with shelves outboard forward, counter top.

Shelves on bulkhead above bunk.

Opening portlight outboard.

Opening deck hatch.

Water heater below berth.

t: 01489 886663 m: 07917 148807 e: sales@solentmotoryachts.com

Solent Motor Yachts, Hamble River Boat Yard, Bridge Road, Swanwick, Southampton SO31 7EB



Mainship 390 Trawler

Heads:

To starboard side of passageway forward.

Jack'n'Jill access from passageway or forward cabin.

Inboard facing marine toilet mounted outboard forward.

Counter top wrapping around heads with inset wash handbasin aft, vanity locker outboard.

Large top loading locker outboard of heads

Shower stall with folding screen, moulded seat with storage under in shower stall outboard.

Opening portlight outboard

Opening deck hatch

Deck house:

Large open plan space with movable furniture

Galley located to port side forward, L-shaped worktop.

Helm station forward to starboard

Sliding door to cockpit

Sliding door outboard of helm, providing access to starboard side deck

Counter top running aft of galley to port and storage below, lockers overhead.

Movable bucket type armchair with foot rest beneath.

IKEA two-seat sofa bed.

Height adjustable saloon table on mobile base, table top veneered with curlew as feature (2021).

Corrian counter top nav station aft to starboard side of doors to cockpit.

Locker below nav station.

Central forward window opens.

Large locker accessible through floor below helm station.

3-section access to engine space by lifting saloon floor.

Galley:

L-shaped worktop forward to port.

Stainless steel sink mounted forward.

Worktop outboard forward

Gas cooker built into worktop aft with corrian splash back above.

Fridge and microwave built into unit aft.

Locker overhead with coffee maker built in

Selection of drawers and lockers beneath worktop

Fully equipped galley, including:

- Pots and pans.
- Melamine crockery.
- Stainless steel cutlery.
- Full set of cooking utensils.

t: 01489 886663 m: 07917 148807 e: sales@solentmotoryachts.com

Solent Motor Yachts, Hamble River Boat Yard, Bridge Road, Swanwick, Southampton SO31 7EB



Mainship 390 Trawler

Helm:

Forward to starboard
Wooden spoked steering wheel with wooden rim
Dashboard with engine gauges forward
Dual level engine controls outboard of dash
Controls for thruster and trim tabs
Plotter displays mounted forward

Cockpit:

Two movable bucket type armchairs with foot rests beneath.
Foldable table.

DECK EQUIPMENT

Deck Layout:

Moulded bulwarks with walk around side decks.
Solid alloy guard rail running around top of bulwark and forming forward pulpit rail.
Short GRP bowsprit extending forward with single bow roller built-in.
Windlass mounted on plinth aft of bowsprit with chain storing in locker beneath accessible from hatch aft of windlass.
Wooden samson post mounted aft of windlass.
Stainless steel mooring cleats mount on gunwales forward and midships.
Stainless steel samson post on quarter aft.
Cockpit aft spanning full beam of boat.
Warp storage lockers built into gunwales on transom.
Lazarette locker beneath cockpit forward.
Access to steering compartment below cockpit aft.
Walk-through transom with GRP moulded door.
Bathing platform aft which dinghy stows over on weaver snap davits.
Boarding ladder stows below bathing platform.
GRP moulded steps to access flybridge to starboard of sliding door to wheelhouse.

Flybridge layout:

Large (5.0m x 2.9m) flybridge Moulded coaming forward, wrapping around to form helm station.
Centrally mounted helm station forward with swivelling helm seat.
Stainless steel wheel with engine dash forward.
Dual lever engine controls outboard of wheel.
Bench seats outboard of helm seat port and starboard, with under-seat storage lockers.
Fixed table with pull out leaves port and starboard.
Fixed alloy grab rail wrapping around aft end of flybridge.
2 x 100W solar panels on reinforced mounting frames attached to grab rail.

t: 01489 886663 m: 07917 148807 e: sales@solentmotoryachts.com
Solent Motor Yachts, Hamble River Boat Yard, Bridge Road, Swanwick, Southampton SO31 7EB



Mainship 390 Trawler

Wind generator mounted on stainless steel pole to aft starboard quarter.
2 x 2.75kg Campingaz 907 butane gas cylinders and regulator under port bench seat
Alloy grabrail wrapping around steps access with outboard storage bracket mounted on rail.
Alloy mast with antennas, lights and radar scanner mounted on.
Removable manual deck crane.
Barbecue tray clamps onto grab rail.

Canvas Work:

Bimini cover for flybridge (2017).
Zip in forward, side and aft panels for Bimini to create tent.
Low level wind screen for guard rail around flybridge.
Cover with zip out access panel fitted over access steps.
Zip-in panels fitting around cockpit to create full cockpit enclosure.

Anchoring & Mooring:

Bow Anchor – Bruce anchor on 25m chain rode.
Electric Windlass – Lewmar windlass with controls on foredeck and flybridge.
Selection of mooring warps.
Selection of fenders.

Tender:

Inflatable dinghy – Seago Spirit 270 Airdeck with twin seats
EasyFold launching wheels.
Stowing on bathing platform on weaver snap davits with fixed length stainless steel stays.

Outboard Motor:

ePropulsion Spirit 1.0 Plus (equivalent to 3 hp) electric outboard motor (May 2023)
Atlantic motor lock.

General:

Hozelock expandable hose (2025)
Boathook x 2
Deck Brush x 2
Pontoon cleat pick-up.

SAFETY EQUIPMENT:

General note on safety equipment: Any safety equipment such as liferafts, Epirbs, fire extinguishers and flares etc. are usually personal to the current owner(s) and if being left on-board as part of the sale of a used vessel may require routine servicing, replacement, or changing to meet a new owners' specific needs.

t: 01489 886663 m: 07917 148807 e: sales@solentmotoryachts.com
Solent Motor Yachts, Hamble River Boat Yard, Bridge Road, Swanwick, Southampton SO31 7EB



Mainship 390 Trawler

Life saving:

Liferaft – Ocean Standard 4C – certified until June 2028

Stainless steel liferaft cradle on flybridge.

Personal Locator Beacon – McMurdo FastFind 220 (GPS) - next service June 2033.

Plastimo horseshoe buoy and bracket

Safety throwing line with rack

Radar reflector mounted on antenna mast

Set of 4 guest lifejackets Storm 100N

Gas Alarm

3 x Fire Extinguishers

Fire Blanket in galley.

Grab Bag – contains flares and PLB

Images:



t: 01489 886663 m: 07917 148807 e: sales@solentmotoryachts.com
Solent Motor Yachts, Hamble River Boat Yard, Bridge Road, Swanwick, Southampton SO31 7EB

Solent Motor Yachts normally acts as a broker for the vendor who unless otherwise stated is not acting in the course of a business. Whilst every care has been taken in the preparation of these particulars the correctness is not guaranteed and they are intended as a guide only and do not constitute a part of any contract. A prospective buyer is strongly advised to check these particulars and where appropriate and at his own expense to employ a qualified marine surveyor to carry out a survey and/or to have an engine trial conducted which if conducted by Solent Motor Yachts shall not imply any liability on our part.

Mainship 390 Trawler



t: 01489 886663 m: 07917 148807 e: sales@solentmotoryachts.com
Solent Motor Yachts, Hamble River Boat Yard, Bridge Road, Swanwick, Southampton SO31 7EB

Solent Motor Yachts normally acts as a broker for the vendor who unless otherwise stated is not acting in the course of a business. Whilst every care has been taken in the preparation of these particulars the correctness is not guaranteed and they are intended as a guide only and do not constitute a part of any contract. A prospective buyer is strongly advised to check these particulars and where appropriate and at his own expense to employ a qualified marine surveyor to carry out a survey and/or to have an engine trial conducted which if conducted by Solent Motor Yachts shall not imply any liability on our part.

Mainship 390 Trawler



t: 01489 886663 m: 07917 148807 e: sales@solentmotoryachts.com
Solent Motor Yachts, Hamble River Boat Yard, Bridge Road, Swanwick, Southampton SO31 7EB

Solent Motor Yachts normally acts as a broker for the vendor who unless otherwise stated is not acting in the course of a business. Whilst every care has been taken in the preparation of these particulars the correctness is not guaranteed and they are intended as a guide only and do not constitute a part of any contract. A prospective buyer is strongly advised to check these particulars and where appropriate and at his own expense to employ a qualified marine surveyor to carry out a survey and/or to have an engine trial conducted which if conducted by Solent Motor Yachts shall not imply any liability on our part.

Mainship 390 Trawler



t: 01489 886663 m: 07917 148807 e: sales@solentmotoryachts.com
Solent Motor Yachts, Hamble River Boat Yard, Bridge Road, Swanwick, Southampton SO31 7EB

Solent Motor Yachts normally acts as a broker for the vendor who unless otherwise stated is not acting in the course of a business. Whilst every care has been taken in the preparation of these particulars the correctness is not guaranteed and they are intended as a guide only and do not constitute a part of any contract. A prospective buyer is strongly advised to check these particulars and where appropriate and at his own expense to employ a qualified marine surveyor to carry out a survey and/or to have an engine trial conducted which if conducted by Solent Motor Yachts shall not imply any liability on our part.

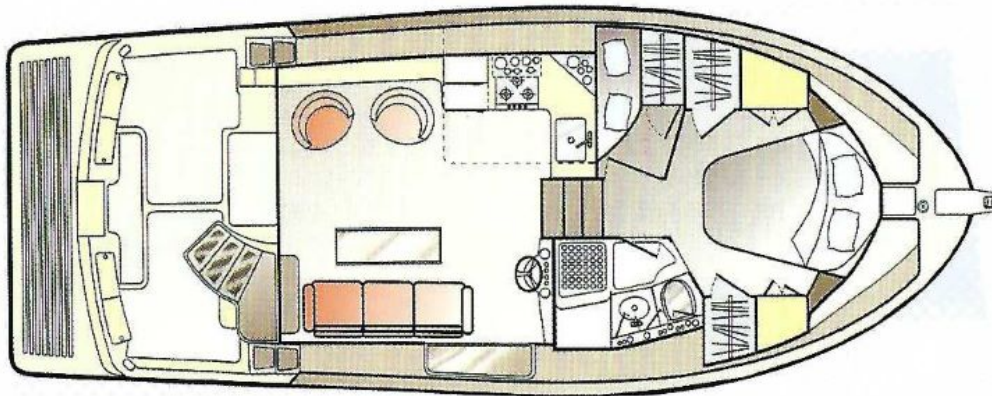
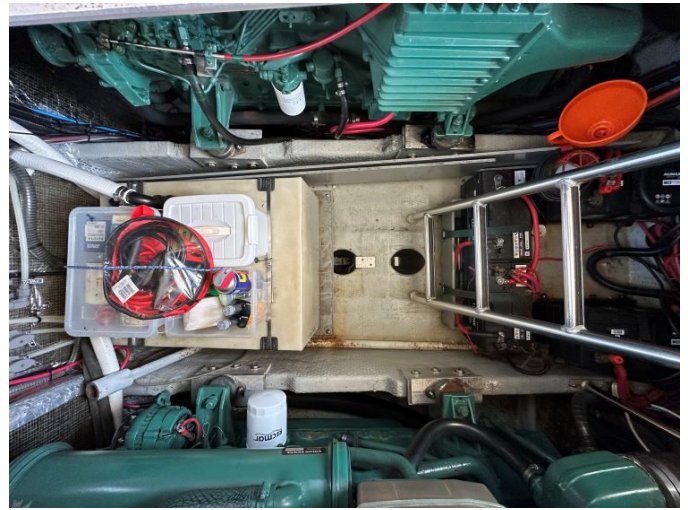
Mainship 390 Trawler



t: 01489 886663 m: 07917 148807 e: sales@solentmotoryachts.com
Solent Motor Yachts, Hamble River Boat Yard, Bridge Road, Swanwick, Southampton SO31 7EB

Solent Motor Yachts normally acts as a broker for the vendor who unless otherwise stated is not acting in the course of a business. Whilst every care has been taken in the preparation of these particulars the correctness is not guaranteed and they are intended as a guide only and do not constitute a part of any contract. A prospective buyer is strongly advised to check these particulars and where appropriate and at his own expense to employ a qualified marine surveyor to carry out a survey and/or to have an engine trial conducted which if conducted by Solent Motor Yachts shall not imply any liability on our part.

Mainship 390 Trawler



t: 01489 886663 m: 07917 148807 e: sales@solentmotoryachts.com
Solent Motor Yachts, Hamble River Boat Yard, Bridge Road, Swanwick, Southampton SO31 7EB

Solent Motor Yachts normally acts as a broker for the vendor who unless otherwise stated is not acting in the course of a business. Whilst every care has been taken in the preparation of these particulars the correctness is not guaranteed and they are intended as a guide only and do not constitute a part of any contract. A prospective buyer is strongly advised to check these particulars and where appropriate and at his own expense to employ a qualified marine surveyor to carry out a survey and/or to have an engine trial conducted which if conducted by Solent Motor Yachts shall not imply any liability on our part.