

Solent
MOTOR YACHTS
on your wavelength



Princess 388



YEAR: 1991
TYPE: Flybridge
LOA: 12.34m (41'6")
BEAM: 4.22m (13'10")
DRAFT: 0.99m (3'3")
WEIGHT: 8,500 Kg
ENGINE: 2 x Volvo Penta
TAMD61A 306hp
HOURS: 2,360 approx.
FUEL: Diesel
FUEL TANK: 300 gallons
WATER TANK: 100 gallons
BERTHS: 6

PRINCIPAL FEATURES

Bow thruster (2020), Westerbeke 4.4 generator, Eberspacher diesel cabin heating with Easy remote control, Raymarine E125 & E95 Hybrid touch Radar/GPS plotters, Autohelm 7000 autopilot, Raymarine I40 Wind gauge, Raymarine DSC VHF, Eberspacher cabin heating, Washing machine, S/S Davits, Heated towel rails, TV in saloon & forward cabin, Fusion Bluetooth stereo, Recent exterior upholstery and Cockpit covers

LYING: Hamble River Boat Yard
PRICE: £59,950 (tax paid)

Description:

This is a fabulous example of a Princess 388, which is a popular large family flybridge cruiser powered by a pair of classic Volvo Penta 61s - 305hp diesel engines on shaft drives with a recent bow thruster and all the extras required to make her the perfect boat for cruising the south coast in style and comfort.

t: 01489 886663 m: 07917 148807 e: sales@solentmotoryachts.com
Solent Motor Yachts, Hamble River Boat Yard, Bridge Road, Swanwick, Southampton SO31 7EB

Solent Motor Yachts normally acts as a broker for the vendor who unless otherwise stated is not acting in the course of a business. Whilst every care has been taken in the preparation of these particulars the correctness is not guaranteed and they are intended as a guide only and do not constitute a part of any contract. A prospective buyer is strongly advised to check these particulars and where appropriate and at his own expense to employ a qualified marine surveyor to carry out a survey and/or to have an engine trial conducted which if conducted by Solent Motor Yachts shall not imply any liability on our part.



Princess 388

Under her current ownership since 2019 and they have much loved and upgraded her over their ownership and she has been a truly remarkable family cruiser that even has a washing machine for all those long days away...

Contact Derek or Richard today to arrange a viewing as you will not find another quite like this...

Specification and equipment:

- Construction: GRP
- Hull Colour: White
- Drive Type: Shaft drive
- Maximum Speed: 29 knots (approx.)
- Cruising Speed: 23 knots (approx.)
- Hull: Planing

2 x Volvo Penta TAMD61A – 306hp diesel engines with ZF220A gearboxes

New shafts, PPS shaft seals, gearbox couplings, cutlass bearings and prop balance (2022/3)

Morse throttles with new cables 2025

Hydraulic steering

Sidepower bow thruster – fitted 2020

Lenco trim tabs with indicators (2022)

Windscreen wipers

Shore power & cable

Battery charger

Victron batter monitor (2019)

Solar panels fitted to rear flybridge with Victron MPPT charge controller

4 x New batteries (2024)

New Victron Multiplus 3000 VA inverter (2024)

Westerbeke 4.4 generator

New Eberspacher D6 diesel cabin heating with Easy Start for remote control (2024)

t: 01489 886663 m: 07917 148807 e: sales@solentmotoryachts.com
Solent Motor Yachts, Hamble River Boat Yard, Bridge Road, Swanwick, Southampton SO31 7EB

Solent Motor Yachts normally acts as a broker for the vendor who unless otherwise stated is not acting in the course of a business. Whilst every care has been taken in the preparation of these particulars the correctness is not guaranteed and they are intended as a guide only and do not constitute a part of any contract. A prospective buyer is strongly advised to check these particulars and where appropriate and at his own expense to employ a qualified marine surveyor to carry out a survey and/or to have an engine trial conducted which if conducted by Solent Motor Yachts shall not imply any liability on our part.

Solent
MOTOR YACHTS
on your wavelength



Princess 388

Pressurised hot and cold water

Water heated by calorifer or immersion

New Fusion Bluetooth stereo linked to 6 internal and external speakers (2020)

Manual heads

TV in saloon and forward master cabin

Raymarine E125 hybrid touch screen Radar/GPS plotter to lower helm

Raymarine E95 hybrid touch screen Radar/GPS plotter to flybridge helm

Autohelm 7000 autopilot

Raymarine I40 Wind instrument

Raymarine I40 depth and speed gauge

Raymarine DSC VHF radio

Compass

Recent cockpit canopy (2023)

Upgraded exterior upholstery (2020)

New Lofrans electric windlass with dual station controls with 35m 10mm chain

Stainless steel saloon doors and window frames

Stainless steel pulpit & guard rails

S/steel davits

Automatic bilge pumps with manual back-up

Manual fire extinguishers in all cabins

Automatic fire extinguishers in engine room

Remote searchlight

Accommodation:

6 berth in 2 cabin plus saloon, new carpets

Large forward double cabin with stowage throughout including hanging space. En-suite heads to stb with manual head, sink, heated towel rail.

Twin guest cabin to starboard with large hanging locker and storage under berths.

Day head to port with shower and heated towel rail.

t: 01489 886663 m: 07917 148807 e: sales@solentmotoryachts.com

Solent Motor Yachts, Hamble River Boat Yard, Bridge Road, Swanwick, Southampton SO31 7EB



Princess 388

Fully-equipped galley to port with fridge & freezer, sink, recent smart combi oven and microwave, 4 burner gas hob, recent Corian work surfaces and plenty of storage.

Comfortable spacious saloon with L shaped seating to starboard (converts to a double berth as and when required) and twin sofa to port next to the entertainment centre.

Double lower helm position with all the nav aids required to cross the channel in confidence and comfort.

Comfortable cockpit with plenty of space for a table and chairs.

Owners History:

List for Impulsive Princess 388

Built: 1991

Engines: twin TAMD 61A (306HP) with ZF220A gearboxes

Boat came with

- Raymarine E125 hybrid touch plotter (lower helm)
- Raymarine E95 hybrid touch plotter (fly-bridge)
- Raymarine dual station VHF
- Autohelm 7000 auto-pilot (dual station)
- Raymarine graphic multi display (flybridge)
- Gas 4 burner hob
- Electric oven
- Westerbeke 4.4BCD twin cylinder generator

Purchased Easter 2019 from Newark Marina

Fridge Dometic CRX110 fitted April 2019

Summer 19

Windscreen wiper arms

Alternators replaced

Victron BMV712 battery monitor fitted

Electric towel rails fitted to heads

Lower helm port ignition replaced

t: 01489 886663 m: 07917 148807 e: sales@solentmotoryachts.com
Solent Motor Yachts, Hamble River Boat Yard, Bridge Road, Swanwick, Southampton SO31 7EB

Solent
MOTOR YACHTS
on your wavelength



Princess 388

Winter 19/20

Boat lifted

New Lofrence winch with chain counter and new 35metres of 10mm chain

Sidepower bow thruster fitted with dual station controls and remote

New rear cockpit upholstery

Actisense EMU fitted (converts analogue engine instruments onto NMEA2000 network)

Antifoul stripped back, primed and re antifouled

Props refurbished

Port side gearbox refurbished

Coolers stripped and cleaned

Engines serviced including impellers

Generator serviced

Replacement anodes

Gearbox oil change

Polished

New Raymarine I40 speed and depth fitted

Engine coolant flush and change

New saloon interior touch lighting

Summer 20

Fusion stereo system and 6 speakers linked to NMEA2000 network

Smart Oven fitted

New shower waste pump fitted

Washing machine fitted

Winter 20/21

Boat lifted

All new rudder bushings fitted

Antifouled

Polished

Engines serviced including impellers

Generator serviced

Replacement anodes

t: 01489 886663 m: 07917 148807 e: sales@solentmotoryachts.com

Solent Motor Yachts, Hamble River Boat Yard, Bridge Road, Swanwick, Southampton SO31 7EB

Solent
MOTOR YACHTS
on your wavelength



Princess 388

Gearbox oil change
New en-suite toilet
Seacocks changed for both toilets
New curtains in saloon
New touch lighting to both cabins
4G internet modem/router fitted

Summer 21 Boat moved to The Solent

New windscreen motors
Props refurbished
Raymarine I70 multi-display fitted to fly-bridge
Raymarine I40 wind speed display fitted
Bimini and framework fitted
SeaSmart toilet flush cleaners fitted to both heads
New taps in both heads
New shower bar mixer to day head
Port engine stop solenoid replaced

Winter 21/22

Boat lifted
Antifouled
Engines serviced including impellers
Generator serviced
Polished
Anodes changed
Gearbox oil change
Trim tab controls and rams updated with gauges
Battery cables and terminals replaced up to master switches
New Lumar foredeck hatch with blind/flyscreen

Summer 22

Port side water tank replaced

t: 01489 886663 m: 07917 148807 e: sales@solentmotoryachts.com
Solent Motor Yachts, Hamble River Boat Yard, Bridge Road, Swanwick, Southampton SO31 7EB

Solent
MOTOR YACHTS
on your wavelength



Princess 388

Winter 22/23

Boat lifted
Antifouled
Engines serviced including impellers
Generator serviced
Polished
Anodes changed
Gearbox oil change
New prop shafts
Props refurbished
New upper and lower cutlass bearings
New PSS shaft seals
New gearbox couplings
Both turbos refurbished
New canopy
Generator seacock replaced
Radar dome repaired by Raymarine

Summer 23

AIS transponder fitted
Solar panels fitted to rear of fly-bridge with Victron MPPT charge controller
Victron Surbo GX with 5inch touchscreen display fitted

Winter 23/24

Boat lifted
Antifouled
Engines serviced including impellers
Generator serviced
Polished
Anodes changed
Gearbox oil change
New trimtab planes fitted
New Eberspaecher D6 heater fitted

t: 01489 886663 m: 07917 148807 e: sales@solentmotoryachts.com
Solent Motor Yachts, Hamble River Boat Yard, Bridge Road, Swanwick, Southampton SO31 7EB

Solent
MOTOR YACHTS
on your wavelength



Princess 388

Engine coolant flush and change
New domestic water pump
Hot water expansion vessel
Cold water accumulator tank
New Wema water gauge fitted and connected to the SurboGX

Summer 24

Victron multiplus2 3000 VA inverter charger fitted
New domestic batteries X4
Eberspaecher Easy Start web fitted
New fly-bridge helm seat
Blinds fitted in cabins, heads and galley
Ruuvi tags fitted to saloon and engine bay (to monitor temperatures via SurboGX)

Winter 24/25

Boat lifted
Antifouled
Engines serviced including impellers
Generator serviced
Polished
Anodes changed
Gearbox oil change
New interior carpets fitted

Summer 25

All new throttle and gear cables
New throttle/gear handset on fly-bridge
Lower helm throttle/gear handset stripped and serviced

Winter 25/26

Boat lifted
Antifouled
Engines serviced including impellers

t: 01489 886663 m: 07917 148807 e: sales@solentmotoryachts.com
Solent Motor Yachts, Hamble River Boat Yard, Bridge Road, Swanwick, Southampton SO31 7EB

Solent
MOTOR YACHTS
on your wavelength



Princess 388

Polished

Anodes changed

Gearbox oil change

Engine services means the following have been changed: oil, oil filters, impellers, air filters, crankcase breathers, primary and secondary diesel filters and gearbox oil

Images:



t: 01489 886663 m: 07917 148807 e: sales@solentmotoryachts.com
Solent Motor Yachts, Hamble River Boat Yard, Bridge Road, Swanwick, Southampton SO31 7EB

Solent Motor Yachts normally acts as a broker for the vendor who unless otherwise stated is not acting in the course of a business. Whilst every care has been taken in the preparation of these particulars the correctness is not guaranteed and they are intended as a guide only and do not constitute a part of any contract. A prospective buyer is strongly advised to check these particulars and where appropriate and at his own expense to employ a qualified marine surveyor to carry out a survey and/or to have an engine trial conducted which if conducted by Solent Motor Yachts shall not imply any liability on our part.

Solent
MOTOR YACHTS
on your wavelength



Princess 388



t: 01489 886663 m: 07917 148807 e: sales@solentmotoryachts.com
Solent Motor Yachts, Hamble River Boat Yard, Bridge Road, Swanwick, Southampton SO31 7EB

Solent Motor Yachts normally acts as a broker for the vendor who unless otherwise stated is not acting in the course of a business. Whilst every care has been taken in the preparation of these particulars the correctness is not guaranteed and they are intended as a guide only and do not constitute a part of any contract. A prospective buyer is strongly advised to check these particulars and where appropriate and at his own expense to employ a qualified marine surveyor to carry out a survey and/or to have an engine trial conducted which if conducted by Solent Motor Yachts shall not imply any liability on our part.

Solent
MOTOR YACHTS
on your wavelength



Princess 388



t: 01489 886663 m: 07917 148807 e: sales@solentmotoryachts.com
Solent Motor Yachts, Hamble River Boat Yard, Bridge Road, Swanwick, Southampton SO31 7EB

Solent Motor Yachts normally acts as a broker for the vendor who unless otherwise stated is not acting in the course of a business. Whilst every care has been taken in the preparation of these particulars the correctness is not guaranteed and they are intended as a guide only and do not constitute a part of any contract. A prospective buyer is strongly advised to check these particulars and where appropriate and at his own expense to employ a qualified marine surveyor to carry out a survey and/or to have an engine trial conducted which if conducted by Solent Motor Yachts shall not imply any liability on our part.

Solent
MOTOR YACHTS
on your wavelength



Princess 388



t: 01489 886663 m: 07917 148807 e: sales@solentmotoryachts.com
Solent Motor Yachts, Hamble River Boat Yard, Bridge Road, Swanwick, Southampton SO31 7EB

Solent Motor Yachts normally acts as a broker for the vendor who unless otherwise stated is not acting in the course of a business. Whilst every care has been taken in the preparation of these particulars the correctness is not guaranteed and they are intended as a guide only and do not constitute a part of any contract. A prospective buyer is strongly advised to check these particulars and where appropriate and at his own expense to employ a qualified marine surveyor to carry out a survey and/or to have an engine trial conducted which if conducted by Solent Motor Yachts shall not imply any liability on our part.

Solent
MOTOR YACHTS
on your wavelength



Princess 388



t: 01489 886663 m: 07917 148807 e: sales@solentmotoryachts.com
Solent Motor Yachts, Hamble River Boat Yard, Bridge Road, Swanwick, Southampton SO31 7EB

Solent Motor Yachts normally acts as a broker for the vendor who unless otherwise stated is not acting in the course of a business. Whilst every care has been taken in the preparation of these particulars the correctness is not guaranteed and they are intended as a guide only and do not constitute a part of any contract. A prospective buyer is strongly advised to check these particulars and where appropriate and at his own expense to employ a qualified marine surveyor to carry out a survey and/or to have an engine trial conducted which if conducted by Solent Motor Yachts shall not imply any liability on our part.

Solent
MOTOR YACHTS
on your wavelength



Princess 388



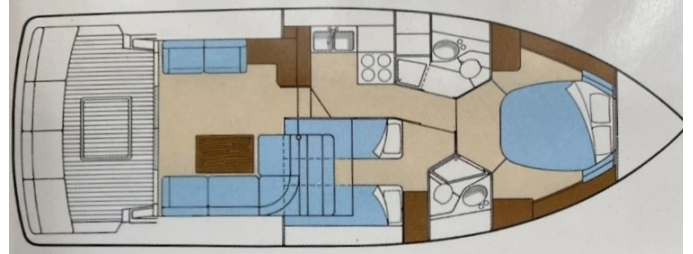
t: 01489 886663 m: 07917 148807 e: sales@solentmotoryachts.com
Solent Motor Yachts, Hamble River Boat Yard, Bridge Road, Swanwick, Southampton SO31 7EB

Solent Motor Yachts normally acts as a broker for the vendor who unless otherwise stated is not acting in the course of a business. Whilst every care has been taken in the preparation of these particulars the correctness is not guaranteed and they are intended as a guide only and do not constitute a part of any contract. A prospective buyer is strongly advised to check these particulars and where appropriate and at his own expense to employ a qualified marine surveyor to carry out a survey and/or to have an engine trial conducted which if conducted by Solent Motor Yachts shall not imply any liability on our part.

Solent
MOTOR YACHTS
on your wavelength



Princess 388



t: 01489 886663 m: 07917 148807 e: sales@solentmotoryachts.com
Solent Motor Yachts, Hamble River Boat Yard, Bridge Road, Swanwick, Southampton SO31 7EB

Solent Motor Yachts normally acts as a broker for the vendor who unless otherwise stated is not acting in the course of a business. Whilst every care has been taken in the preparation of these particulars the correctness is not guaranteed and they are intended as a guide only and do not constitute a part of any contract. A prospective buyer is strongly advised to check these particulars and where appropriate and at his own expense to employ a qualified marine surveyor to carry out a survey and/or to have an engine trial conducted which if conducted by Solent Motor Yachts shall not imply any liability on our part.