

# Putnam County SWCD News

Winter 2023

## Educational Opportunities

### *Early Spring Workshops*

Early spring is prime time to pick up a few tips or extend your depth of knowledge on soil, forestry, or farm management! Here are some opportunities to engage and learn a tidbit or two!

Starkey Farm Field Day- March 16 8 am-2 pm Brownsburg, IN  
For more information, go to [Hendricks SWCD.org](https://hendricks.org)

Southern Indiana Grazing Conference – March 29 Odon, IN  
<https://www.facebook.com/SouthernIndianaGrazingConference/>

Putnam Co Master Gardeners 2023 Garden Fair – March 18 9-3 pm  
Putnam County Fairgrounds, Greencastle IN

PHISH Garden Workshop – April 22  
Knightsville, IN – More info to come

Forestry Management – 4 part series  
April 13, 20, 27 6-8 pm, April 29 9-10:30 am  
More info: <https://tinyurl.com/ForestMgmt23> or call 765-653-8411

\*Some workshops require pre-registration and/or charge a fee. More details are available by contacting the hosting organization.



*To receive future  
newsletters through  
email or mail,  
contact Sara at:*

Putnam County Soil & Water  
Conservation District

1007 Mill Pond Drive  
Greencastle, IN 46135

765-653-5716 x3

[office@putnamswcd.org](mailto:office@putnamswcd.org)

[Putnamswcd.org](https://putnamswcd.org)

If you are interested in learning about a certain topic, let us know! We may know of a webinar or workshop in the area that covers that topic. We can also help find published materials on that topic!

# PC RIP Schedules Weed Wrangles

## *Volunteers welcomed!*

The Putnam County Remove Invasive Plants group (PC RIP) is holding a series of Weed Wrangles throughout 2023. Weed Wrangles are gatherings where volunteers work to remove invasive plants from an area to allow native plants to get re-established. Invasive plants are harmful to our ecosystems because they spread rapidly, out competing native plants. Our native insects and wildlife rely on native plants for food and shelter. Invasive plants don't offer the same nutrition or habitat as native plants.

The Weed Wrangles occur in various locations across Putnam County and are open to all levels of experience and knowledge. The group has some tools but bringing your own loppers and work gloves is helpful. It is also recommended to bring some water to drink to stay hydrated.

Before being an eligible location, an invasive survey must be completed. This provides an opportunity to evaluate what plants are there and how much. Surveys often point out the native plants that are present as well as invasive plants that are creeping in. Weed wrangles are then scheduled to start removing the invasive plants.

The PC RIP group holds Weed Wrangles each month from March through October, on the 4<sup>th</sup> Saturday of the month from 9 to 11 am, weather permitting. To stay on top of the latest PC RIP news, search Putnam County Remove Invasive Plants on Facebook!

Pictured below: PC RIP members, Greencastle Parks staff and volunteers at Big Walnut Sports Park at a Weed Wrangle in 2022



## Dates of PC RIP Events

March 20 5:00 pm – PC RIP Meeting @ USDA Service Center  
March 26 9-11 am – Weed Wrangle @ Cloverdale Community Park  
April 17 5:00 pm – PC RIP Meeting @ USDA Service Center  
April 29 9-11 am – Weed Wrangle @ Putnam County Museum  
May 15 5:00 pm – PC RIP Meeting 5:00 @ Robe Ann Park (or USDA)  
May 27 9-11 am – Weed Wrangle @ Cloverdale Community Park



# Another Grant for Big Walnut Creek?

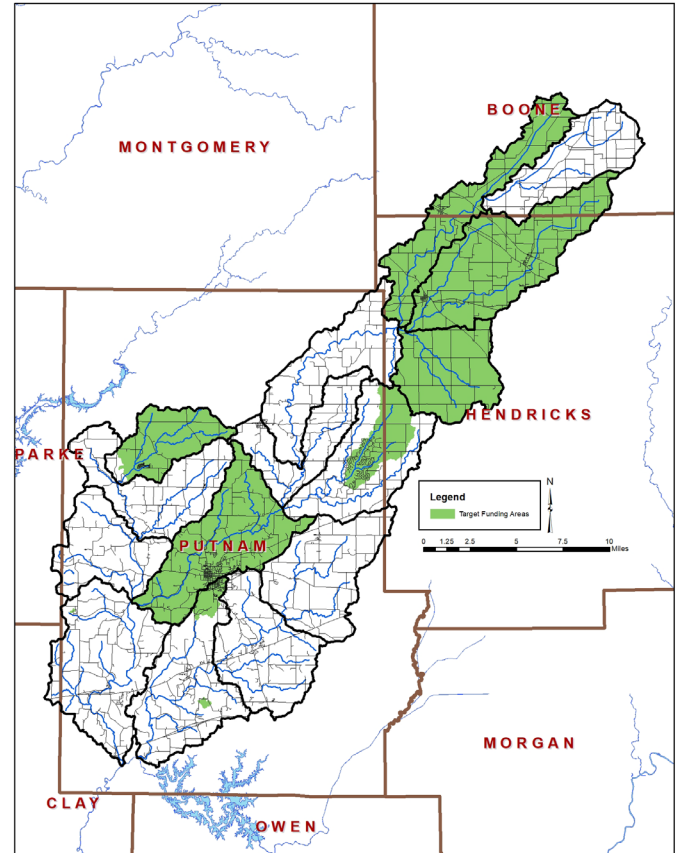
## *Still accepting application for cost-share*

We are nearing the halfway mark of our three-year grant. We are still accepting applications for cost-share projects that fall within the target areas (indicated in green on the adjacent map).

While nearly all the funding for the current grant is obligated, applications are still being accepted for two reasons. First, there is a possibility that not all projects will be completed and more funding will become available. Second, we will be applying for another round of funding. Our application for additional funding will be more robust when accompanied with a list of projects that are ready to implement.

The cost-share program will cover up to 75% of the cost of approved projects. Projects must meet NRCS Technical Standards and Specifications. Some projects that qualify are access control/fencing, field border/buffer strips, forage & biomass plantings, cover crops, and nutrient/pest management. This is by no means an exhaustive list.

More information, including a map of the target areas, can be found on our website at [putnamswcd.org](http://putnamswcd.org) or by calling the SWCD office at 765-653-5716 x3.



## Rolling Application Deadlines

Applications for cost-share are accepted on a rolling basis. Deadlines are April 1, and July 1, October 1, and February 1. Contact the office for more information or to schedule a site visit!

# Consider native plants in your landscape

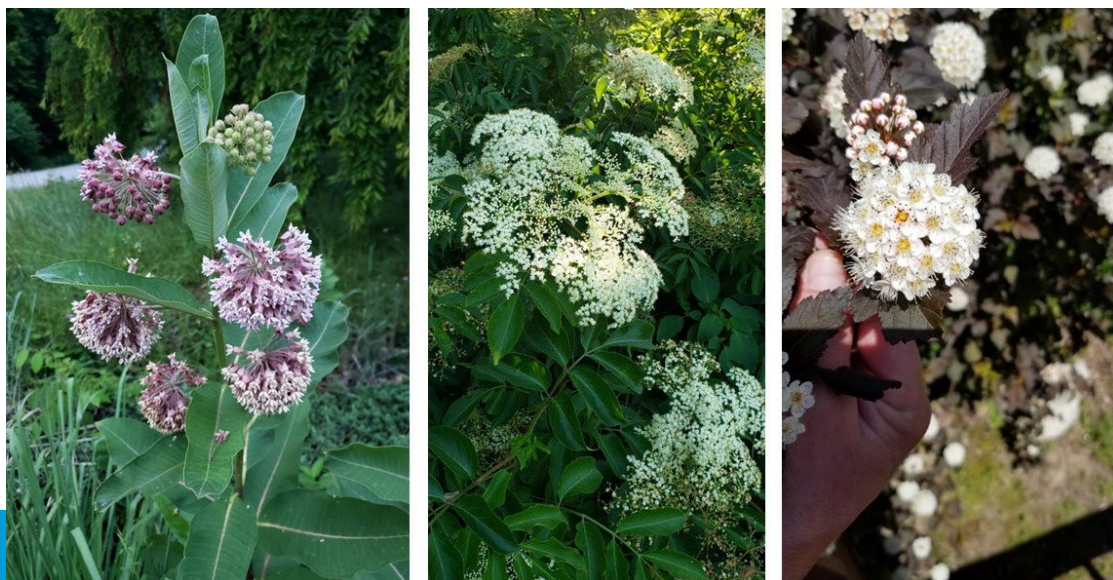
## *Native plants are suited for our climate!*

A common occurrence in home landscaping is to plant something, and it starts taking over the area in a few years. Or the plant is delicate and requires extra care to make it through the winter or periods of drought. Native plants are adapted to our climate and do not require special care to survive our variable weather. They will grow and thrive despite frigid or mild winters and in abundant rainfall or periods of little rainfall.

Native plants are also helpful to our native wildlife, including insects. Many insects are dependent on a small number of plants for their food and habitat. In turn, the insects are a key source of food for our songbirds and gamebirds. Even adding a few native plants to an existing landscape area can provide habitat for wildlife. Consider planting some milkweed plants in a sunny spot to help Monarchs or planting some buttonbush in a wet area to attract butterflies.

Incorporating native plants in landscaping takes a little planning. It is best to consider the drainage and the amount of sunlight the area receives when choosing plants to use. It is also important to consider the mature size of the plant for the space it will occupy.

Information on native plants is available from many different sources but be sure you get it from a reliable source. A list of native plants that work well in Putnam County is available from the PC RIP group and can be obtained through the SWCD office. Another excellent source of information is the Indiana Native Plant Society website, available at [www.indiananativeplants.org](http://www.indiananativeplants.org). Also, big box stores don't have the best selection of native plants. Native plants often take a little more planning to obtain but are available through a variety of companies. The Indiana Native Plant Society also maintains a list of organizations that sell native plants.



## Some Native Plants

Pictured above from left to right: Common Milkweed, Elderberry, and Ninebark

These native plants can be used in landscaping while providing food and habitat to native insects and wildlife.