

PROPERTY REPORT

1605 Send Way, Lutz, FL 33549



Presented by

Elaine Deval | Broker Associate

Florida Real Estate License: BK3191862



Work: (813) 949-6444 | Fax: (813) 428-3957

Main: admin@landolakes.realestate

Office: www.landolakes.realestate

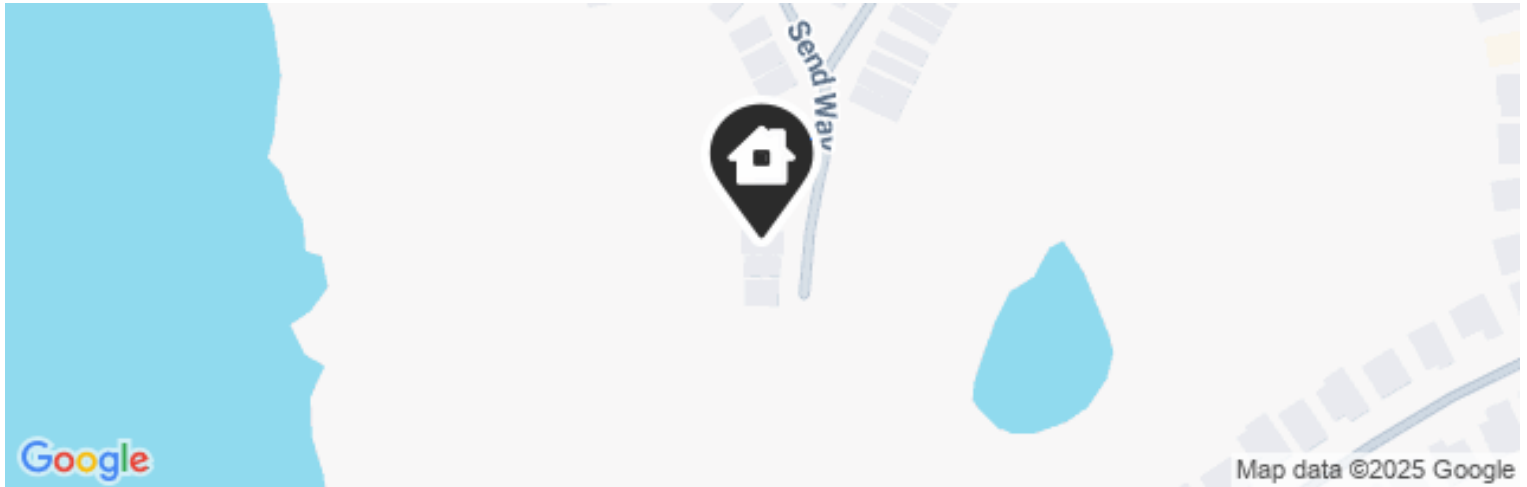
LPT Realty LLC

16703 Early Riser Avenue

505

Land O' Lakes, FL 34638

1605 Send Way, Lutz, FL 33549



Legend:  Subject Property

● Active • Active: 6/5/2025

List Price

\$349,000

Active Date: 6/5/2025
Listing ID: TB8392489

Current Estimated Value

\$363,240

Last RVM® Update: 7/19/2025

RVM® Est. Range: \$356K – \$371K

RVM® Confidence: ★★★★★

↑ RVM® Change - Last 1 Month: \$4,200

↑ RVM® Change - Last 12 Months: 3.63%

This report contains data and information that is publicly available and/or licensed from third parties and is provided to you on an "as is" and "as available" basis. The information is not verified or guaranteed. Neither this report nor the estimated value of a property is an appraisal of the property. Any valuation shown in this report has been generated by use of proprietary computer software that assembles publicly available property records and certain proprietary data to arrive at an approximate estimate of a property's value. Some portions of this report may have been provided by an RPR user; RPR is not responsible for any content provided by its users. RPR and its information providers shall not be liable for any claim or loss resulting from the content of, or errors or omissions in, information contained in this report.

Home Facts

Public Remarks

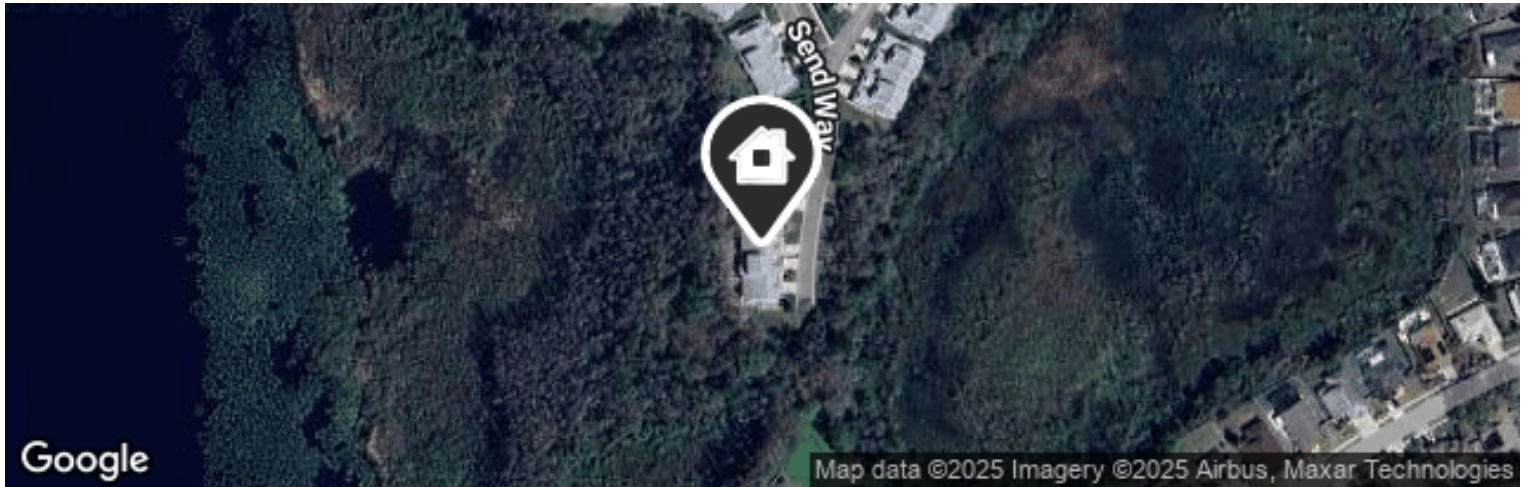
This is not a CONDO! Waters Edge at Heron Cove homes are Fee Simple properties and are located in a gated community with a community pool & hot tub and a community boat dock with access to 150-acre Bird Lake. Maintenance of the grounds is included in the low HOA fees of \$270/month. This is a one-story end unit villa with a split floor-plan, three bedrooms, 2 bathrooms and a 2 car garage, featuring an open floor plan and vaulted ceilings. Sliding doors lead from the great room to the screened lanai. The owner installed hardwood flooring in the spacious great room and the hallway and the formal dining area. The kitchen includes a relatively new refrigerator, range, and dishwasher and a breakfast nook with sliders leading out to the screened lanai. The large master bedroom has a cathedral ceiling and a walk-in closet. The Master bath has dual vanities, a jetted garden tub, and a separate shower. All 3 bedrooms are carpeted. The roof is the HOA responsibility; the roof and the hot water heater were replaced in 2020. AC is less than 10 years old.

Home Facts	Public Facts	Listing Facts	Realtor Refinements
Property Type	Single Family	Single Family	—
Property Subtype	Single Family Residential	Villa	—
Bedrooms	—	3	—
Total Baths	2	2	—
Full Baths	2	2	—
Partial Baths	—	—	—
Living Area (sq ft)	1,450	1,450	—
Building Area (sq ft)	1,450	2,037	—
Lot Size	0.45 acres	0.45 acres	—
Lot Dimensions	19439 SF	—	—
Garage	Yes	Yes	—
Garage (spaces)	2	2	—
Year Built	2001	2001	—
Roofing	Composition Shingle	Shingle	—
Heating	Forced Air Unit	Central	—
Cooling	Central	Central Air	—
Foundation	—	Slab	—
Construction	—	Vinyl Siding, Wood Frames	—
Exterior Walls	Other	—	—
Number of Units	0	—	—
Number of Stories	1	One	—

Homeowner Facts

Owner Name (Public)	1605 Send Way Llc
Mailing Address	1551 Lake Heron Dr Lutz FL 33549-8746
Vesting	Company/Corporation

Extended Home Facts



Legend:  Subject Property

Interior Features

Appliance	Refrigerator, Disposal, Dishwasher, Range, Microwave
Cooling	Central Air
Floor	Carpet, Hardwood
Heating	Central
Pet	Yes
Laundry	Inside, Laundry Room
General	Thermostat, Walk-In Closet

Interior Details

Floor Cover	Carpet
Garage	420 sq ft
Heating Fuel Type	Electric
Interior Walls	Gypsum Board/Drywall/Sheetrock/Wallboard
Porch Open Finished	24 sq ft
Porch Screened	143 sq ft
Total Area	2037 sq ft

Exterior Features

Construction	Wood Frames, Vinyl Siding
Foundation	Slab
Patio	Covered, Deck, Screened, Enclosed, Rear Porch
Roof	Shingle
Road	Paved
Water Access	Lake
Water Front	Waterfront, Lake
Parking	Off Street, Guest, Driveway, Garage Door Opener
Parking Spaces	2
Sewer	Public Sewer

Exterior Details

Lot Size - Square Feet	19,439 sq ft
Lot Size - Acres	0.45 acres
Neighborhood Code	WHCV
Roof Type	Gable

Levels	One
Utilities	Electricity Connected, Sewer Conn., Street Lights, Public, Fire Hydrant, Irrigation Meter, Cable Installed, Water
Water	Public
Lot Size Features	Irregular Lot, Conservation Preserve
Lot Size Range	1/4 to less than 1/2

Location Details

Builder Name	VAN DORSTEN/KING
Directions to Property	Heron Cove is in Pasco County on the South side of SR 54 half way between Land O' Lakes Blvd. (US41N) and Collier Parkway... there are two gates.... use the gate to the left after you exit SR 54.
Subdivision	WATERS EDGE AT HERON COVE SUBDIVISION PH
Zoning	MPUD
Community Features	Water Access, Waterfront, Pool, Fishing, Deed Restrictions

Other Details

Building Condition	Excellent
Building Quality	A
Driveway Concrete	540

Homeowners Association Info

Association	Yes
Phone	813-968-5665
Dues	\$270
Payments per Year	12
Payments Per Year	12
Features	Maintenance, Vehicle Restrictions, Recreation Facilities, Gated, Fence Restrictions, Clubhouse

Schools (from Listing Data)

Elementary School	Lake Myrtle Elementary-PO
Middle School	Charles S. Rushe Middle-PO
High School	Sunlake High School-PO

(based on location)

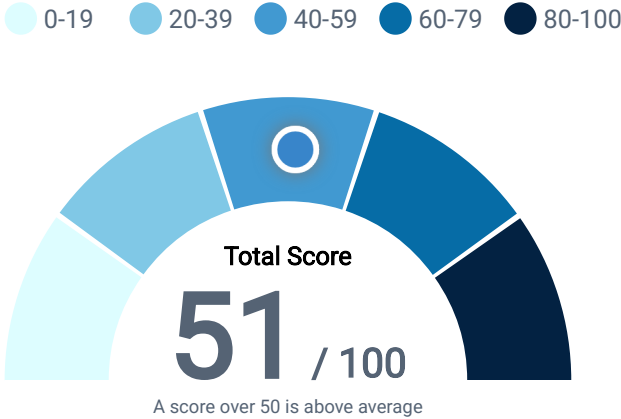
Elementary School	Lake Myrtle Elementary School
Middle School	Charles S. Rushe Middle School
High School	Sunlake High School
School District	Pasco County School District

AARP Livability™ Index for 33549

This chart rates the overall livability of a selected ZIP code on a scale from 0 to 100. AARP Livability™ is a trademark of AARP Inc.

Data Source: [AARP](#)

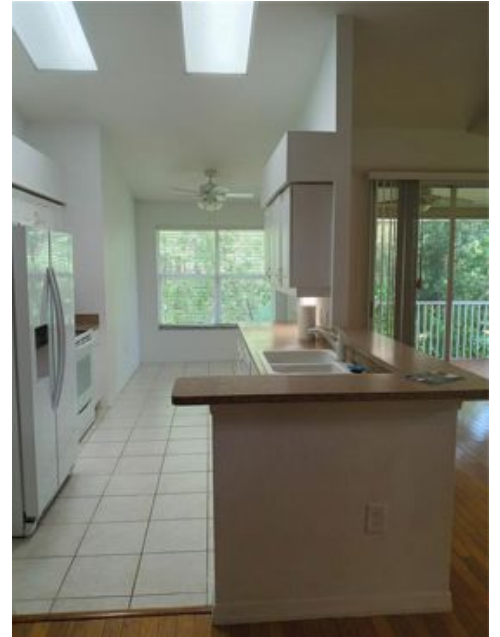
Update Frequency: Annual

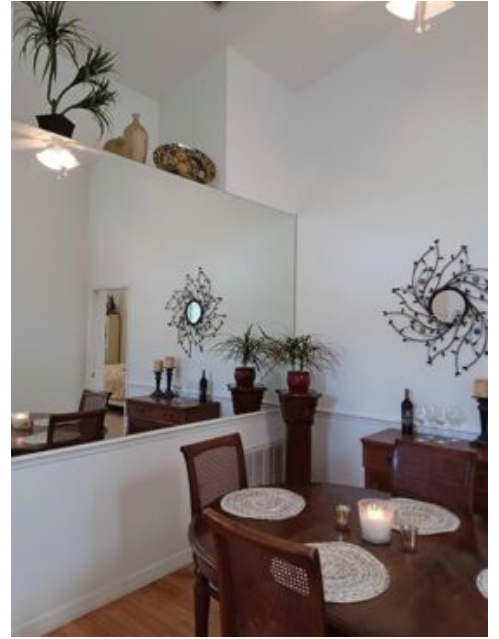


Housing	56
Affordability & Access	
Neighborhood	48
Access to Life, Work & Play	
Transportation	31
Safe & Convenient Options	
Environment	55
Clean Air & Water	
Health	52
Prevention, Access & Quality	
Engagement	57
Civic & Social Involvement	
Opportunity	59
Inclusion & Possibilities	

Property Photos





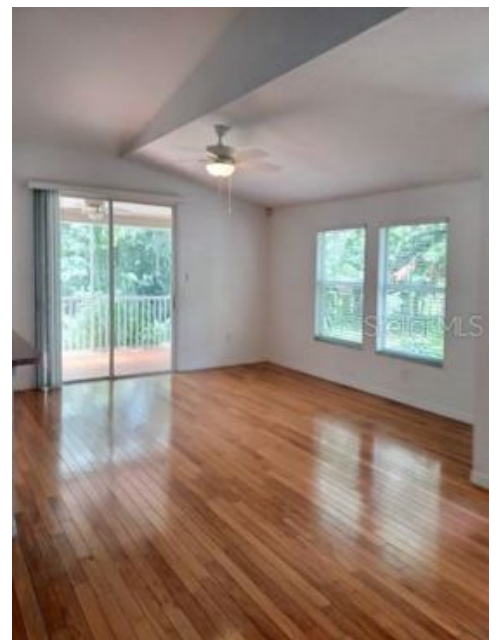




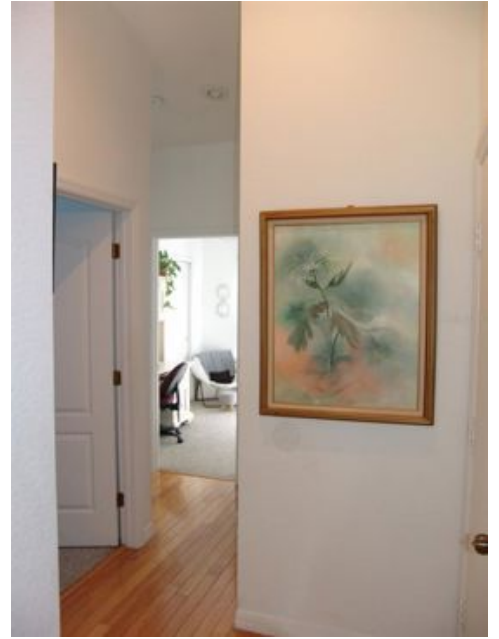
Historical Photos



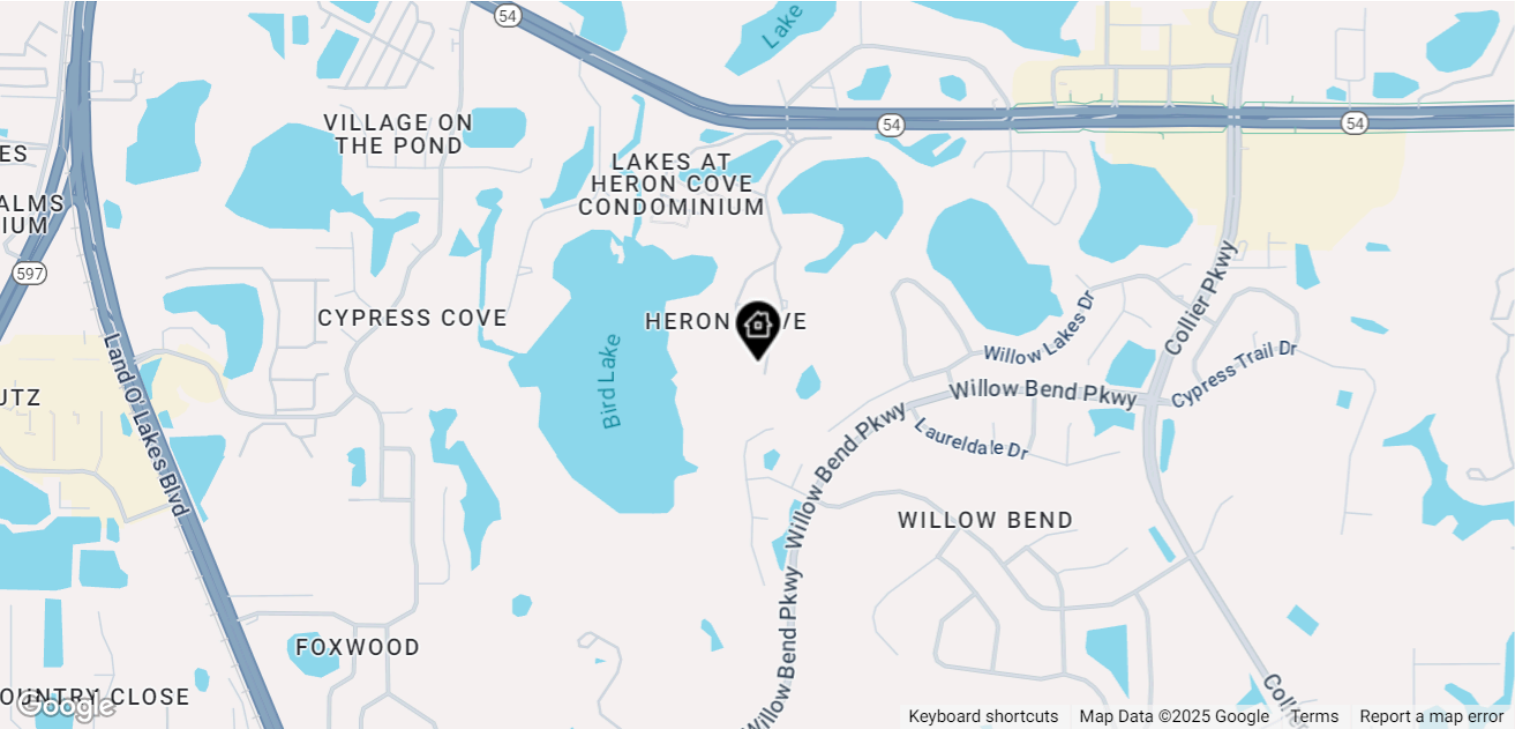
FLOOR PLAN - 1605 Send Way







Comps and Adjustments



LEGEND: Subject Property Pending For Sale or For Lease Distressed Recent Sale Off Market

This Property



Active
1605 Send Way
Lutz, FL 33549

Proxim.	Days in RPR	Date	Amount	\$/sq ft	Living Area	Lot Size	Beds	Baths	Built
—	47 days	—	—	\$241	1,450 sq ft	0.45 acres	3	2	2001

No comps have been selected for this property.

Property History

Median Estimated Home Value

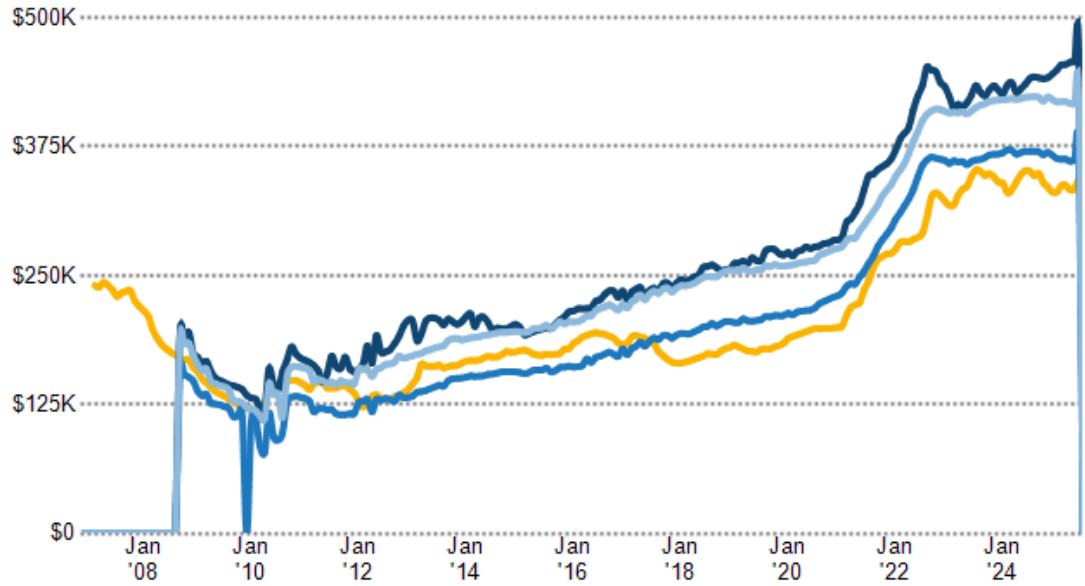
This graphic displays property estimates for a market area and a subject property, where one has been selected. Estimated property values are generated by a valuation model and are not formal appraisals.

Data Source: Public records, and MLS sources where licensed

Update Frequency: Monthly

■ This Property
■ Lutz
■ Pasco County
■ Florida

Estimated Value:
\$363,240



Sales History

Sales Date	Sales Amount	Price per sq. ft.
10/9/2017	\$163,500	\$112

Assessed Values

Date	Improvements	Land	Total	Tax
2024	\$229,792	\$36,724	\$266,516	\$4,274
2023	\$214,315	\$25,969	\$240,284	\$3,874
2022	\$165,988	\$22,369	\$188,357	\$3,116
2021	\$148,735	\$20,113	\$168,848	\$2,872
2020	\$143,084	\$20,113	\$163,197	\$2,778
2019	\$141,673	\$20,113	\$161,786	\$2,776
2018	\$132,329	\$20,113	\$152,442	\$2,628
2017	\$124,121	\$20,113	\$144,234	\$2,541
2016	\$118,199	\$20,113	\$138,312	\$2,435
2015	\$113,011	\$20,113	\$133,124	\$2,396
2014	\$107,992	\$20,113	\$128,105	\$2,219
2013	\$92,236	\$20,113	\$112,349	\$2,015
2012	\$92,706	\$20,113	\$112,819	\$1,948
2011	\$97,460	\$20,113	\$117,573	\$1,993
2008	\$137,312	\$26,757	\$164,069	—
2007	\$156,049	\$26,757	\$182,806	—
2006	\$152,115	\$21,557	\$173,672	—
2005	\$117,989	\$21,197	\$139,186	—

Legal Description

Parcel Number	31-26-19-0210-00A00-0260
County	Pasco County
Zoning	MPUD
Census Tract	121010320.133001
Carrier Route	R039
Abbreviated Description	SEC/TWN/RNG/MER:SEC 31 TWN 26S RNG 19E WATERS EDGE AT HERON COVE SUBDIVISION PHASE II PB 37 PGS 106-109 LOT 26 BLOCK A
Current Use	Villa Detached

Mortgage Records

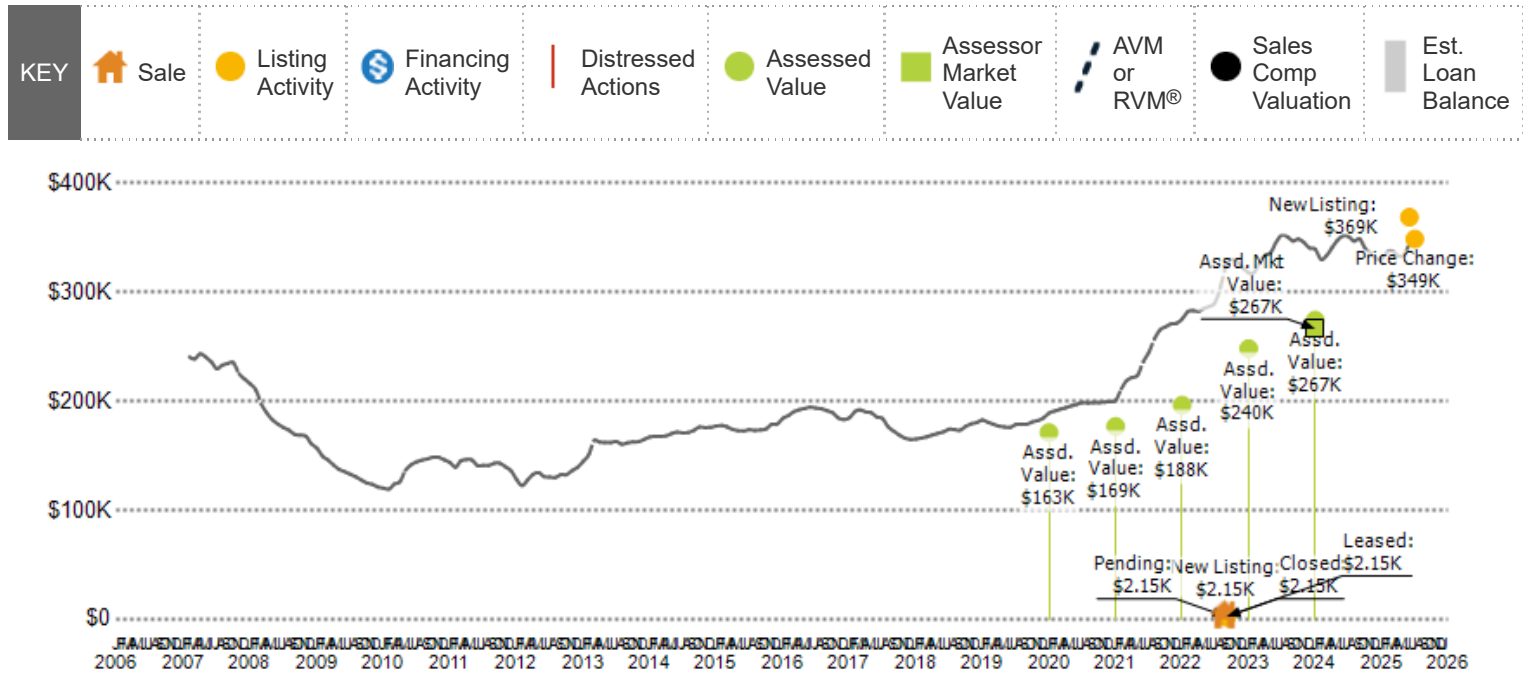
Recording Date	1/3/2012
Borrower Name	SUSAN M MOYERS
Lender Name	REGIONS BANK
Lender Type	Bank
Loan Amount	\$112,900
Document Number	2012000523
Loan Type	Conventional
Contract Date	12/30/2011
Due Date	1/1/2027

Deed Records

Recording Date	2/16/2022	10/9/2017
Document Type	Quit Claim Deed (non-arm's length)	Warranty Deed
Sales Price	—	\$163,500
Sales Price Code	Document states price as 0	Full amount stated on Document
Buyer Name	1605 SEND WAY LLC	RICHARD K DUTTER, KAREN DUTTER
Buyer ID	Limited Liability Company	Husband and Wife
Seller Name	RICHARD K DUTTER, KAREN DUTTER	SUSAN BORO MOYERS
Seller ID	Individual(s)	Single Woman
Document #	2022040938	2017158087
Total Transfer Tax	—	\$1,144
Book #	10553	9615
Page #	3029	3183
Contract Date	2/15/2022	9/22/2017

Sales and Financing Activity

This chart shows a property's sales and financing history. It can be used to compare the value of the property as seen by public records, such as deeds and tax records, with the estimated home value. Actions taken against the owner, such as the issuance of a Notice of Default, are noted. Sales activity, such as listing date and price reductions, are highlighted.



Data Source: Public Record and Listing data

Update Frequency: Valuations are updated twice monthly; actions on the home, such as listing activity or distressed property notices, are updated daily as made available from public records sources

Price Change History

Change Date	Description	Price	Change %
7/13/2025	\$349,000	\$349,000	-5.42%
6/5/2025	Active	\$369,000	—

Neighborhood: Housing Stats and Charts

	33549	Lutz	Pasco County	Florida	USA
Median Estimated Home Value	\$457K	\$613K	\$362K	\$417K	\$371K
Estimated Home Value 12-Month Change	+6%	+5.9%	-2.1%	-1.2%	+1.7%
Median List Price	\$510K	\$649K	\$355K	\$426K	—
List Price 1-Month Change	-0.5%	+4.7%	+2.9%	+0.2%	—
List Price 12-Month Change	+30.1%	+11%	+4.4%	+0.2%	—
Median Home Age	34	30	30	35	44
Own	70%	79%	76%	67%	65%
Rent	30%	21%	25%	33%	35%
\$ Value of All Buildings for which Permits Were Issued	—	—	\$1.81B	\$49.4B	\$385B
% Change in Permits for All Buildings	—	—	-23%	-3%	+6%
% Change in \$ Value for All Buildings	—	—	+2%	-3%	+5%

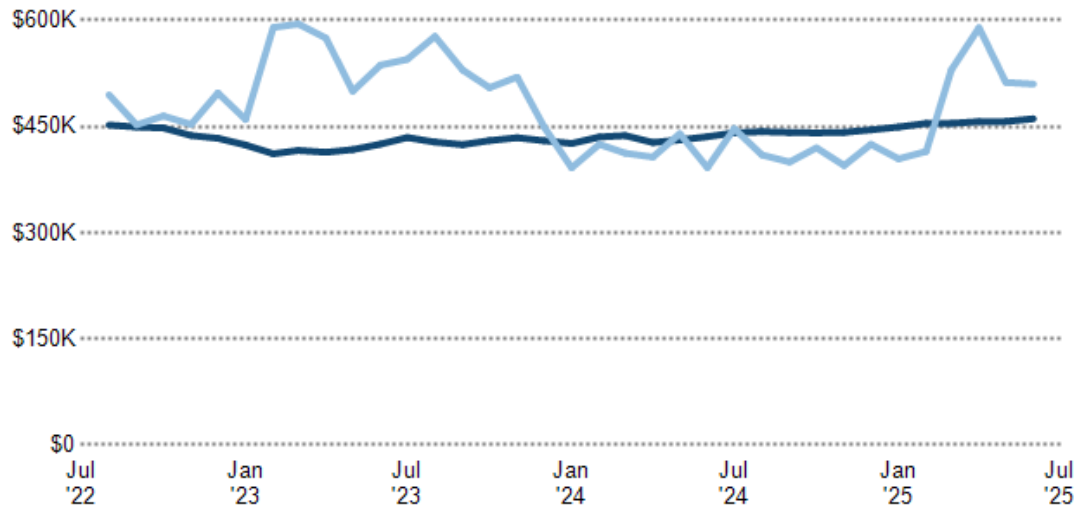
Median Estimated Home Value vs. Median Listing Price

This chart compares a ZIP code's median estimated home value with the median listing price of Active listings. Estimated home values are generated by a valuation model and are not formal appraisals.

Data Source: Public Record and Listing data

Update Frequency: Monthly

■ Median Estimated Value
■ Median List Price



Median Sales Price vs. Sales Volume

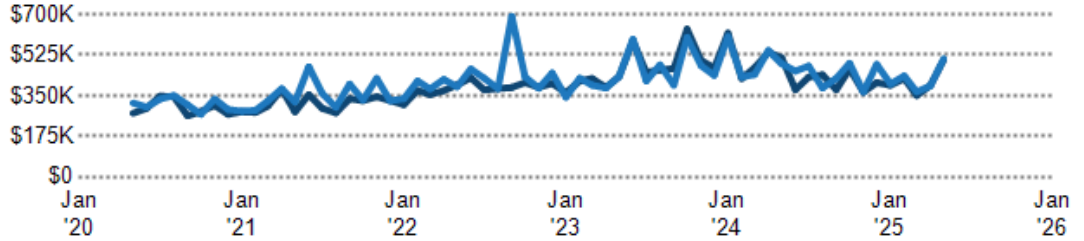
This chart compares the listings and public records sales price trend and sales volume for homes in an area.

Data Source: Public Record and Listing data

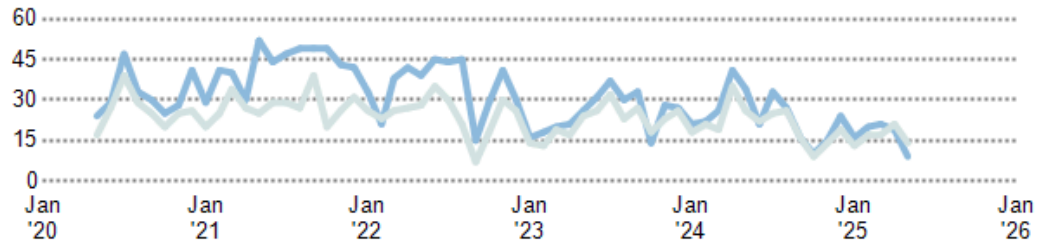
Update Frequency: Monthly

- Median Sales Price Public Records
- Median Sales Price Listings
- Sales Volume Public Records
- Sales Volume Listings

Median Sales Price



Sales Volume



Median Listing Price vs. Listing Volume

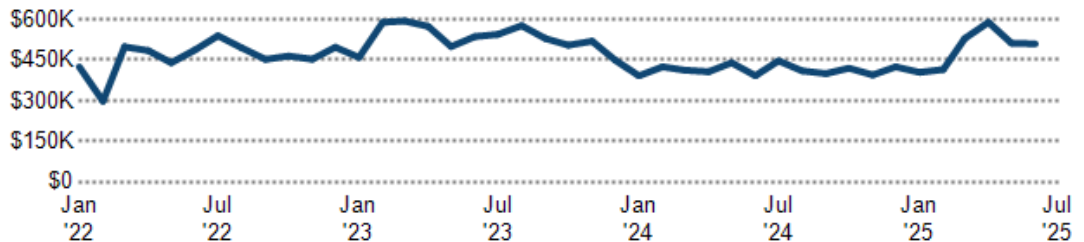
This chart compares the listings and public records sales price trend and sales volume for homes in an area.

Data Source: Public Record and Listing data

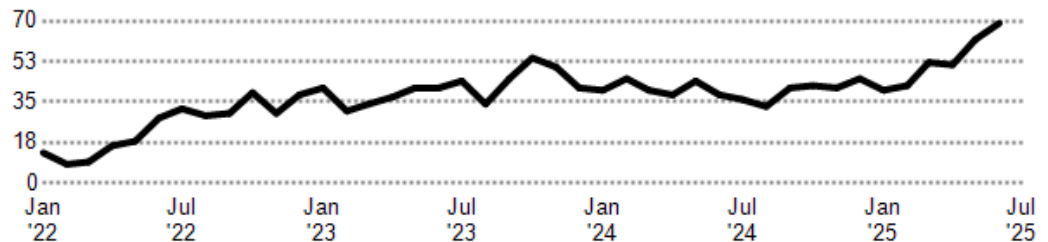
Update Frequency: Monthly

- Median List Price
- Listing Volume

Median List Price



Listing Volume



Listing Inventory

This chart shows the number of For Sale listings in a ZIP code by Property Type.

Data Source: On- and off-market listings sources

Update Frequency: Daily

- ZIP Count Listings by PropertyType



Median Sales Price by Square Footage

This chart shows the median price of homes reported sold in the past six months, according to the size of the living space (square footage sourced from public records). The amount shown for the subject property is sold data where available, or the property's estimated value when sales data are unavailable (such as non-disclosure states) or provided in range format.

Data Source: Public records and MLS data where licensed

Update Frequency: Monthly

■ This Property
■ Comps

This Property

1,450 sq. ft. \$363,240

Comps

2,200 - 2,400 sq. ft. \$345,900

1,400 - 1,600 sq. ft. \$335,000

1,200 - 1,400 sq. ft. \$318,350

Price per Bedroom of Comps Sold

This chart shows the distribution of homes reported sold in the past six months at different prices per bedroom in the area of your search. The amount shown for the subject property is sold data where available, or the property's estimated value when sales data are unavailable (such as a non-disclosure state) or provided in range format.

Data Source: Public records and MLS data where licensed

Update Frequency: Monthly

■ This Property
■ Comps

This Property

\$121K 1

Comps

\$100K - \$110K 2

\$80K - \$90K 2

Price per Square Foot of Comps Sold

This chart shows the distribution of homes reported sold in the past three months at different prices per square foot.

Data Source: Public records data

Update Frequency: Daily

■ This Property
■ Comps

This Property

\$250 1

Comps

\$240 - \$270 2

\$210 - \$240 2

\$120 - \$150 1

Price Range of Comps Sold

This chart shows the distribution of homes reported sold in the past three months within different price ranges in the area of your search. The amount shown for the subject property is sold data where available, or the property's estimated value when sales data is unavailable (such as a non-disclosure state) or provided in range format.

Data Source: Public records data

Update Frequency: Daily

■ This Property
■ Comps

This Property

\$363K 1

Comps

\$300K - \$360K 5

Age Range of Comps Sold

This chart shows the distribution of homes reported sold in the past three months of different age ranges in the area of your search.

Data Source: Public records data

Update Frequency: Daily

■ This Property
■ Comps

This Property

24 yrs 1

Comps

25 - 30 yrs 5

Size of Homes Sold

This chart shows the distribution of homes reported sold in the past three months of different sizes in the area of your search.

Data Source: Public records data

Update Frequency: Daily

■ Sales Count By Living Area



Number of Bedrooms in Homes Sold

This chart shows the distribution of homes reported sold in the past three months, compared by the number of bedrooms, in the area of your search.

Data Source: Public records data

Update Frequency: Daily

■ Sales Count by Bedroom



Neighborhood: People Stats and Charts

	33549	Lutz	Hillsborough County	Florida	USA
Population	20.5K	26.7K	1.49M	21.9M	332M
Population Density per Sq Mi	1.61K	1.09K	1.46K	409	94
Population Change since 2020	+3.8%	+3.5%	+6.3%	+5.8%	+2.1%
Median Age	41	40	38	43	39
Male / Female Ratio	51%	50%	49%	49%	50%

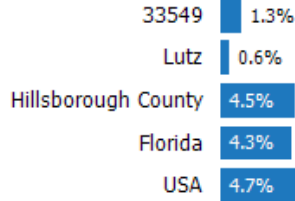
Education Levels of Population

This chart shows the educational achievement levels of adults in an area, compared with other geographies.

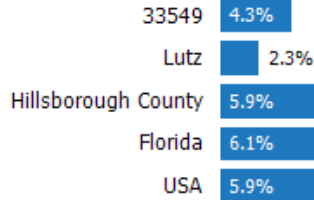
Data Source: U.S. Census American Community Survey via Esri, 2021

Update Frequency: Annually

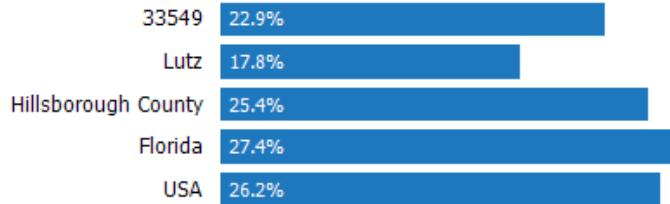
Less Than 9th Grade



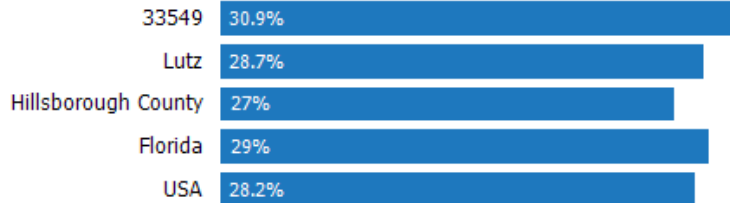
9-12th Grade/No Diploma



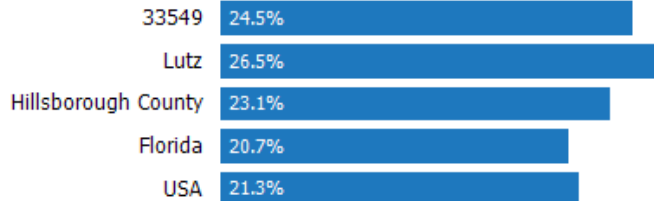
High School Graduate



Associate Degree



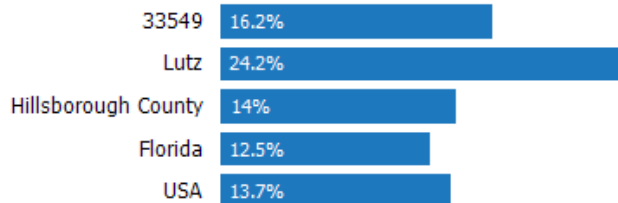
Bachelor's Degree



At Least a College Education



Grad/Professional Degree



Population of Children by Age Group

This chart shows the distribution of the population of children by age range — from birth to 17 — in the area of your search.

Data Source: U.S. Census

Update Frequency: Annually

33549



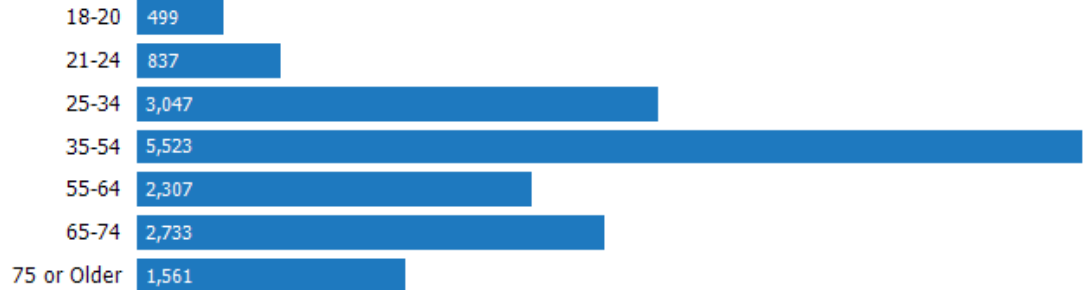
Population of Adults by Age Group

This chart shows the distribution of the population of adults by age range — from 18 to 75-plus — in the area of your search.

Data Source: U.S. Census

Update Frequency: Annually

33549



Households With Children

This chart shows the distribution of households with children, categorized by marital status, in the area of your search.

Data Source: U.S. Census

Update Frequency: Annually

33549



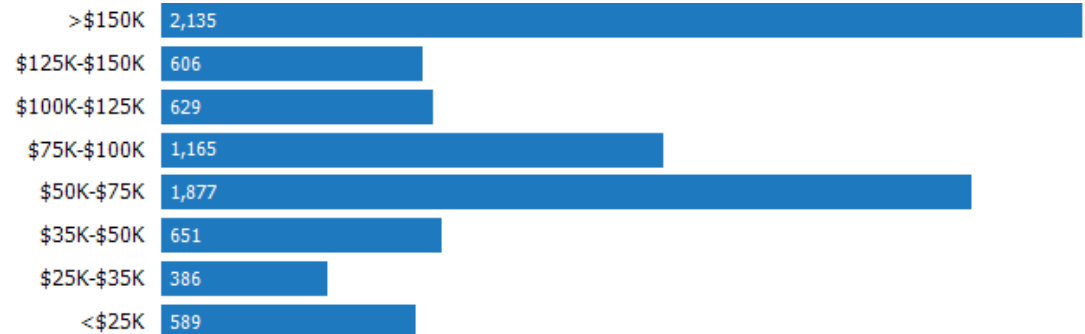
Household Income Brackets

This chart shows annual household income levels within an area.

Data Source: U.S. Census

Update Frequency: Annually

33549



Presidential Voting Pattern

This chart shows how residents of a county voted in the 2020 presidential election.

Data Source: USElectionAtlas.org

Update Frequency: Quadrennially



33549

Neighborhood: Economic Stats and Charts

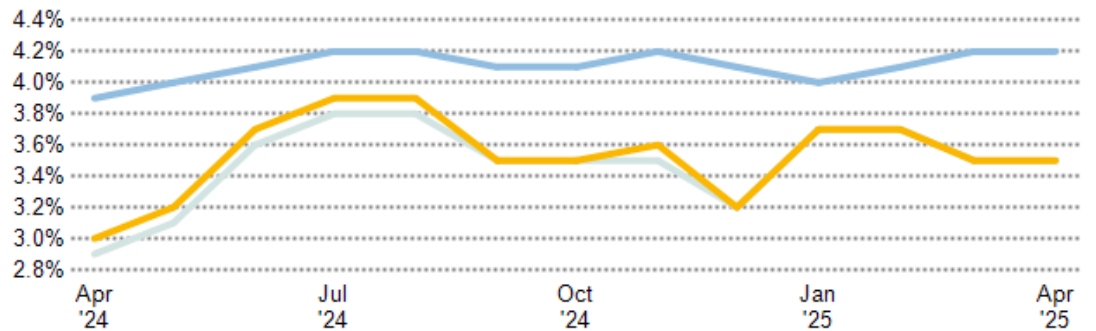
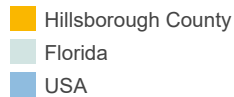
	33549	Lutz	Hillsborough County	Florida	USA
Income Per Capita	\$45,781	\$55,281	\$41,980	\$41,055	\$43,289
Median Household Income	\$86,073	\$114,516	\$75,011	\$71,711	\$78,538
Unemployment Rate	—	—	3.5%	3.5%	4.2%
Unemployment Number	—	—	28.1K	388K	7.17M
Employment Number	—	—	784K	10.8M	164M
Labor Force Number	—	—	812K	11.2M	171M

Unemployment Rate

This chart shows the unemployment trend in the area of your search. The unemployment rate is an important driver behind the housing market.

Data Source: Bureau of Labor Statistics

Update Frequency: Monthly

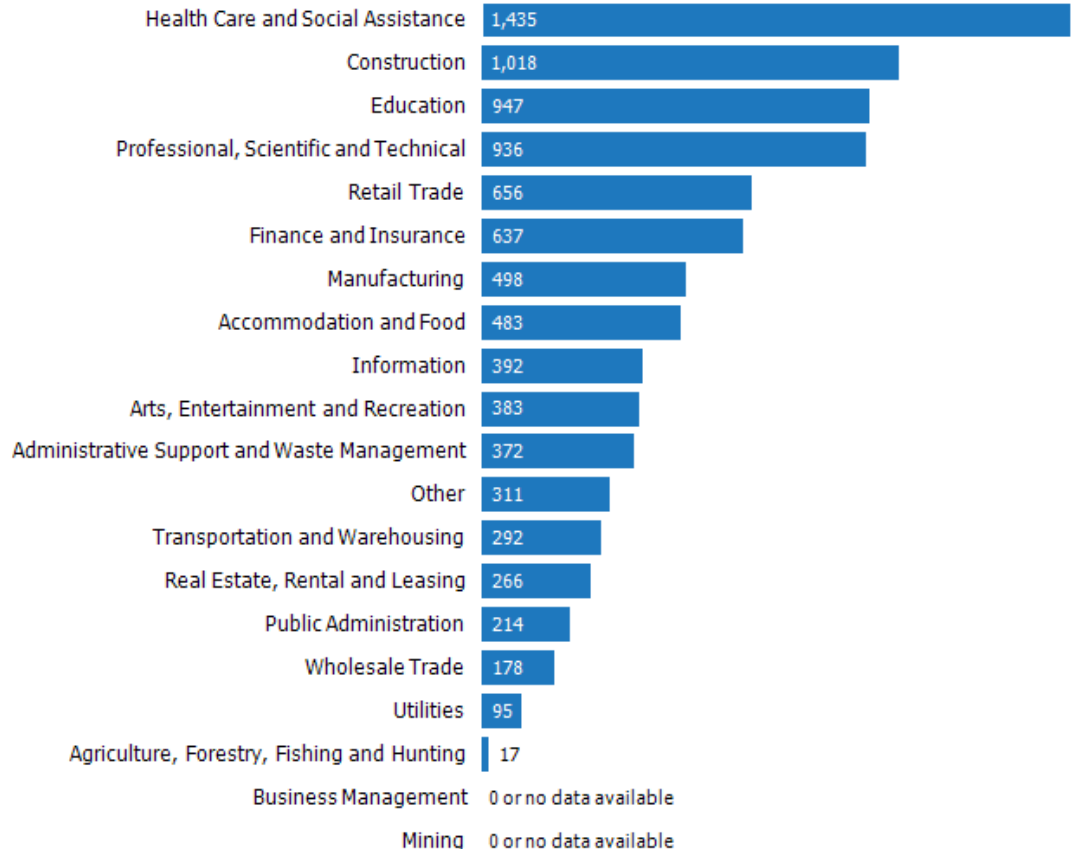


Occupational Categories

This chart shows categories of employment within an area.

Data Source: U.S. Census

Update Frequency: Annually



Neighborhood: Quality of Life Stats and Charts

Quality of Life in 33549

	33549	Lutz	Hillsborough County	Florida	USA
Elevation (in feet)	52	48	59	59	—
Annual Rainfall (in inches)	56.33	55.41	54.32	56.45	—
Annual Snowfall (in inches)	0	0	0	0.06	—
Days of Full Sun (per year)	98	98	98	98	—
Travel Time to Work (in minutes)	—	32	29	28	27
Water Quality - Health Violations	—	—	0	—	—
Water Quality - Monitoring and Report Violations	—	—	0	—	—
Superfund Sites	0	0	20	91	2,466
Brownfield Sites	No	No	Yes	Yes	—

Average Commute Time

This chart shows average commute times to work, in minutes, by percentage of an area's population.

Data Source: U.S. Census
Update Frequency: Annually



How People Get to Work

This chart shows the types of transportation that residents of the area you searched use for their commute.

Data Source: U.S. Census
Update Frequency: Annually



Average Monthly Temperature

This chart shows average temperatures in the area you searched.

Data Source: NOAA
Update Frequency: Annually



School: Lake Myrtle Elementary-PO

School Details	School Facts	Lake Myrtle Elementary-PO	-
Name Lake Myrtle Elementary-PO	Overall Grade		
Level Elementary	Total Enrollment	-	-
Type -	Students per Teacher		
Grades Served -	Students in Free Lunch Program	-	-
School District -	Academic Grade		
Address Address not available	Average GPA	-	-
Phone	Math Proficiency	-	-
	Reading Proficiency	-	-
	Gifted Students	-	-
	AP Enrollments	-	-
	Graduation Rate	-	-
	Average ACT Score	-	-
	Average SAT Score	-	-
	Teacher Grade		
	Average Teacher Salary	-	-
	Teachers in 1st or 2nd Year	-	-

About this data: Facts and proficiency scores are provided by Niche, which compiles scores, community reviews and other data about schools across the United States. Ratings for this school are based on the most recent available facts for each school and district. Data compiled from the U.S. Department of Education, Private School Universe Survey, Common Core Data and others.
Source: Niche Update Frequency: Quarterly

School: Lake Myrtle Elementary School

School Details

Name
Lake Myrtle Elementary School

Level
Elementary

Type
Public

Grades Served
PK, K-5

School District
Pasco County School District

Address
22844 Weeks Blvd, Land O Lakes, FL 34639

Phone
(813) 794-1000

School Facts

Lake Myrtle Elementary School

Overall Grade

B

Total Enrollment

656

Students per Teacher

18:1

Students in Free Lunch Program

43%

Academic Grade

B

Average GPA

—

Math Proficiency

57%

Reading Proficiency

57%

Gifted Students

2%

AP Enrollments

—

Graduation Rate

—

Average ACT Score

—

Average SAT Score

—

Teacher Grade

B-

Average Teacher Salary

\$47,441

Teachers in 1st or 2nd Year

5%

Pasco County School District

B+**84,049****22:1****51%****B+****3.5 (out of 12829 responses)****52%****51%****—****—****91%****25 (out of 1925 responses)****1,180 (out of 4688 responses)****B-****\$47,441****27%**

About this data: Facts and proficiency scores are provided by Niche, which compiles scores, community reviews and other data about schools across the United States. Ratings for this school are based on the most recent available facts for each school and district. Data compiled from the U.S. Department of Education, Private School Universe Survey, Common Core Data and others.
Source: Niche Update Frequency: Quarterly

Community Reviews for this School

Posted: 7/13/2024 by Parent

"There is a lack of communication and your made to purchase lists of supplies that I was told would be shared. After leaving the bags of supplies in the classroom my child is then told she needs to purchase folders and notebooks for class. Using the student to relay needs to the parents instead of communicating with the parent is unprofessional. I have also filled out many forms stating my child's reactions and good sensitivity and it seems to not matter at all to the teachers each year. I have even brought in alternative items in hope they would hear me out and stop giving her the ""rewards"" that are sugary and full of dye that makes my child feel awful and causes her behavior issues in the long run. It's hard having your children in a school that you don't seem to have a voice in or feel heard in."

School: Charles S. Rushe Middle School

School Details

Name
Charles S. Rushe Middle School

Level
Middle

Type
Public

Grades Served
6-8

School District
Pasco County School District

Address
18654 Mentmore Blvd,
Land O Lakes, FL 34638

Phone
(813) 346-1200

School Facts

Charles S. Rushe Middle School

Pasco County School District

Overall Grade

B+

B+

Total Enrollment

1,548

84,049

Students per Teacher

21:1

22:1

Students in Free Lunch Program

26%

51%

Academic Grade

A-

B+

Average GPA

-

3.5 (out of 12829 responses)

Math Proficiency

70%

52%

Reading Proficiency

59%

51%

Gifted Students

11%

-

AP Enrollments

-

-

Graduation Rate

-

91%

Average ACT Score

-

25 (out of 1925 responses)

Average SAT Score

-

1,180 (out of 4688 responses)

Teacher Grade

B

B-

Average Teacher Salary

\$47,441

\$47,441

Teachers in 1st or 2nd Year

6%

27%

About this data: Facts and proficiency scores are provided by Niche, which compiles scores, community reviews and other data about schools across the United States. Ratings for this school are based on the most recent available facts for each school and district. Data compiled from the U.S. Department of Education, Private School Universe Survey, Common Core Data and others. Source: Niche Update Frequency: Quarterly

Community Reviews for this School

Posted: 9/1/2020 by Middle School Student

It is a pretty good school, the teachers are very nice and most of them teach well. I'm happy with my education here.

School: Sunlake High School

School Details

Name
Sunlake High School

Level
High

Type
Public

Grades Served
9-12

School District
Pasco County School District

Address
3023 Sunlake Blvd, Land O Lakes, FL 34638

Phone
(813) 346-1000

School Facts

Sunlake High School

Pasco County School District

Overall Grade

A-

B+

Total Enrollment

2,159

84,049

Students per Teacher

22:1

22:1

Students in Free Lunch Program

27%

51%

Academic Grade

A-

B+

Average GPA

3.55 (out of 1347 responses)

3.5 (out of 12829 responses)

Math Proficiency

63%

52%

Reading Proficiency

62%

51%

Gifted Students

9%

-

AP Enrollments

-

-

Graduation Rate

94%

91%

Average ACT Score

25 (out of 231 responses)

25 (out of 1925 responses)

Average SAT Score

1,200 (out of 594 responses)

1,180 (out of 4688 responses)

Teacher Grade

B

B-

Average Teacher Salary

\$47,441

\$47,441

Teachers in 1st or 2nd Year

1%

27%

About this data: Facts and proficiency scores are provided by Niche, which compiles scores, community reviews and other data about schools across the United States. Ratings for this school are based on the most recent available facts for each school and district. Data compiled from the U.S. Department of Education, Private School Universe Survey, Common Core Data and others. Source: Niche Update Frequency: Quarterly

Community Reviews for this School

Posted: 2/28/2025 by Senior

Academics are great and teacher oversight is too much. Overall good school..not great at sports and limited activities

Posted: 2/7/2025 by Senior

I have attended Sunlake Highschool for all four years of my highschool career. I have noticed that the school is more focused on simply getting you through school and towards graduation, instead of preparing you for your future. Even in my senior year, so close to leaving highschool, they are not active or present in the senior's college searches or there to help them figure out their future. It is hard for students to get help from admin as requests for meetings with counselors are not acknowledged.

Posted: 1/31/2025 by Senior

Sunlake is a great school for academics and sports (except for football). The teachers are great, and the overall atmosphere of the school is pleasant. Although the school does not have exceptional food, all of the other aspects make up for it. I have been in mostly honors and AP classes, so I can only speak for these aspects, but I would like to believe the teachers that teach basic classes are above average just like the higher-level teachers.

Posted: 1/31/2025 by Senior

There is no IB program and few electives to choose from; however, there are many teachers who genuinely want you to succeed. The school tries its best to facilitate as many clubs and sports as possible, and it is safe and comfortable.

Posted: 12/12/2024 by Senior

I would like greater involvement by Administration and teachers in terms of Readiness for the future. Many times I say that the things we learn in class prepares for the future but I feel like it is more than just the curriculum what we should be learning as students. Not only should we have greater Readiness for college which are school does not focus on at all students have to find these resources on their own there should be greater sense of community in a greater sense of participation. Our school creates great competition which should not be imposed on students who are trying to learn because competition only allows students to find ways to be others. When we should be working on creating a community atmosphere.

Estimated Property Equity



Estimated Property Equity

Property Value \$349,000

Estimated Equity —

Updated: N/A

Estimated equity is a calculation of the property value minus the estimated loan(s) payoff amount, which is based on the loan term, loan interest rate, loan start date and using a standard amortization schedule. The payoff amount is not guaranteed to be accurate.

- 
3 Beds
- 
2 Baths
- 
1,450 Sq Ft
- 
19,439 Sq Ft

About RPR (Realtors Property Resource)

- Realtors Property Resource® is a wholly owned subsidiary of the National Association REALTORS®.
- RPR offers comprehensive data – including a nationwide database of 164 million properties – as well as powerful analytics and dynamic reports exclusively for members of the NAR.
- RPR's focus is giving residential and commercial real estate practitioners, brokers, and MLS and Association staff the tools they need to serve their clients.
- This report has been provided to you by a member of the NAR.



About RPR's Data

RPR generates and compiles real estate and other data from a vast array of sources. The data contained in your report includes some or all of the following:

- **Listing data** from our partner MLSs and CIEs, and related calculations, like estimated value for a property or median sales price for a local market.
- **Public records data** including tax, assessment, and deed information. Foreclosure and distressed data from public records.
- **Market conditions and forecasts** based on listing and public records data.
- **Census and employment data** from the U.S. Census and the U.S. Bureau of Labor Statistics.
- **Demographics and trends data** from Esri. The data in commercial and economic reports includes Tapestry Segmentation, which classifies U.S. residential neighborhoods into unique market segments based on socioeconomic and demographic characteristics.
- **Business data** including consumer expenditures, commercial market potential, retail marketplace, SIC and NAICS business information, and banking potential data from Esri.
- **School data and reviews** from Niche.
- **Specialty data sets** such as walkability scores, traffic counts and flood zones.



Update Frequency

- Listings and public records data are updated on a continuous basis.
- Charts and statistics calculated from listing and public records data are refreshed monthly.
- Other data sets range from daily to annual updates.

Learn more

For more information about RPR, please visit RPR's public website: <https://blog.narrpr.com>

