

White Cross Vets, Leeds
March 2025 – September 2025





CLIENT

White Cross Vets



BUDGET

£300K



COMPLETION

September 2025



LOCATION

Pudsey, UK



SECTOR

Clinical

INTRODUCTION

RWB Building Solutions were appointed by ABGI, to undertake a program of works in the building adjacent to the RWB office in Pudsey. The building had previously been a multi office let. RWB Building Solutions were initially appointed for the preliminary works of rip out and removal. Following the success of this early stage of works, RWB Building Solutions were appointed for a full program of works including drainage, walls, ceilings, flooring, fire doors, joinery, windows, roofing, external works and provide labour and assistance with the general fit out and furniture.



THE SCOPE OF WORKS

RWB building solutions delivered a full package of works, working alongside the principal contractor and M&E contractor to deliver the following works;

- Rip out and decommissioning of existing building including enabling works
- Installation of drainage and ground works
- Creation of external accessibility ramp and tarmac repairs
- Supply and installation of walls and ceilings
- Supply and installation of specialist X-ray rooms
- Supply and installation of fire doors and ironmongery
- Supply and installation of external UPVC windows
- Roofing overhaul and clean
- Supply and installation of flooring, including specialistic matting
- Supply and installation of joinery for consultation rooms, prep rooms, kennels and surgeries
- Supply and installation of kitchens
- Decoration
- Exterior clean down



THE SOLUTION

To overcome these challenges, we ensured that each phase of the project was carried out by the right specialist teams, assigning experienced professionals to the areas where their expertise was most critical. This helped maintain efficiency, accuracy, and adherence to specification throughout the build. In parallel, high-quality, regulation compliant materials were selected to ensure durability, safety, and long-term performance. This combination of skilled workmanship and robust materials not only supported delivery within time and budget constraints but also ensured the finished facility met the required operational, safety, and compliance standards.



TESTIMONIAL

"It is always daunting working with a new contractor for the first time, but it quickly became clear that RWB Building Solutions Limited were more than capable of undertaking the build and joinery works at White Cross Vets, Pudsey. Throughout the project, Matt and the team consistently demonstrated professionalism, competence, and a proactive approach.

RWB offered practical solutions to a number of unforeseen issues, helping to keep the programme on track while ensuring the works were completed to a high standard. From regular progress meetings to the final walk-through, it was evident that the project had been delivered with exceptional quality and attention to detail. RWB Building Solutions also went above and beyond the original scope, taking on additional works and providing valuable support whenever needed. Based on our experience at White Cross Vets, we are already considering where we can collaborate with RWB again. They have certainly earned their place as a trusted contractor."

Kevin Hindle, Senior Quantity Surveyor

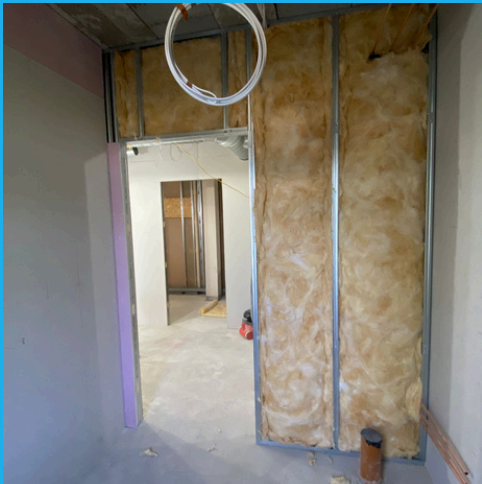


THE RESULTS

The works were completed in the required timeframe meeting the end clients final specification and standard. The final outcome reflects meticulous workmanship, attention to detail, and a coordinated approach that ensured consistency across all stages of the project. Stakeholder expectations were successfully met, resulting in a professional and durable finish that enhances the functionality and presentation of the facility.



THE GALLERY



THE GALLERY



CONTACT US



office@rwbbuild.co.uk



0330 122 1883



www.rwbbuild.co.uk



Unit 3 Mile Stone Court,
Pudsey, LS28 6HE



Fire Door Installation
Fire Door Maintenance



0012

