

# Hollingwood Primary School

February 2026





## CLIENT

Hollingwood Primary



## BUDGET

£35K



## COMPLETION

February 2026



## LOCATION

Bradford, UK



## SECTOR

Education

## INTRODUCTION

RWB Building Solutions were appointed to undertake the removal and replacement of over 600 m<sup>2</sup> existing suspended ceiling grid and tiles within a live school environment. The works were scheduled to be delivered during the February half-term period to minimise disruption.

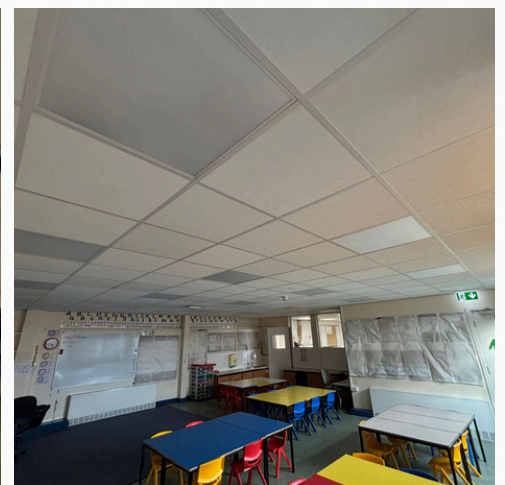
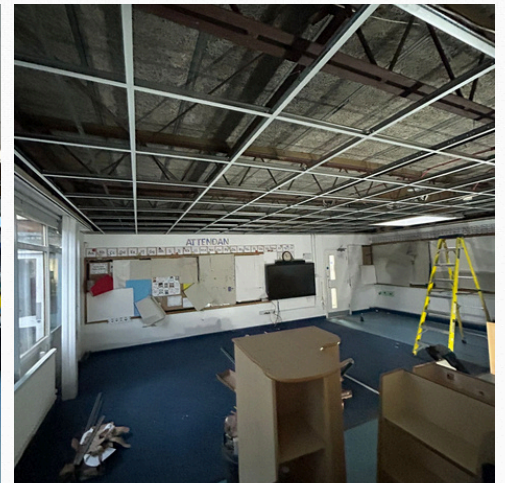
The project involved the safe removal of the existing ceiling system and installation of a new compliant suspended ceiling grid and tile system across multiple classrooms and circulation areas, ensuring the facility was fully operational for the new academic term.

## THE SCOPE OF WORKS

RWB building solutions delivered a full package of works;

- Removal and disposal of existing ceiling grid and tiles
- Inspection of existing services within ceiling void
- Installation of new suspended ceiling grid system
- Supply and installation of new ceiling tiles
- Making good to disturbed areas
- Final clean and handover ready for occupation

All works were delivered in accordance with current building regulations and education sector compliance standards.



## THE PROCESS

The project involved the full replacement of the existing ceiling grid and tiles within a live school environment, delivered under an exceptionally tight programme during the school holiday period. Although no staff or pupils were present on site at the time of the works, the environment had only just been vacated and was due to be reoccupied within a week, leaving no margin for delay. Working at height presented additional challenges, requiring stringent safety controls, careful planning, and disciplined site management to ensure compliance at all times. With a fixed and immovable deadline, the team worked efficiently and methodically to remove and install the new system, maintaining high standards of workmanship while preparing the space for seamless handover ahead of the school's reopening.

## THE SOLUTION

To ensure successful completion within the restricted timeframe, a carefully structured programme was developed prior to commencement. Works were sequenced efficiently, with ceiling areas divided into manageable phases to maintain momentum and quality control.

Experienced operatives trained in working at height were allocated to the project, supported by appropriate access platforms and strict RAMS implementation. Daily progress reviews ensured any unforeseen issues were addressed immediately without impacting overall delivery.

Material procurement was carefully scheduled in advance to prevent supply chain delays, and extended working hours were implemented where required to maintain programme certainty.

Clear communication with the school's facilities team ensured alignment throughout the project, allowing safe coordination and smooth access when required.





## THE RESULTS

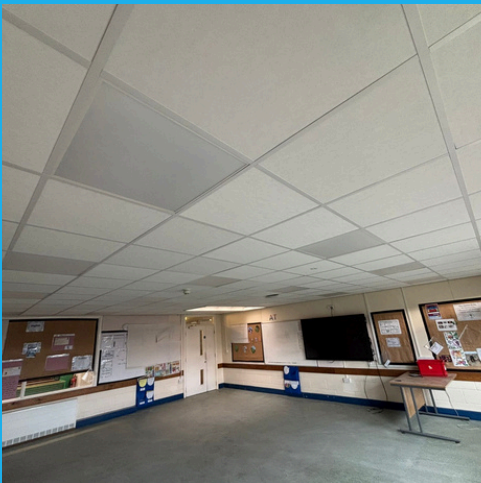
The ceiling replacement was completed within the allocated holiday period, allowing the school to reopen on schedule and fully prepared for the new academic year.

The new suspended ceiling system provides:

- A clean, modern aesthetic
- Improved acoustic performance
- Enhanced fire compliance
- Easy future access to services

The finished installation reflects high standards of workmanship, effective planning, and a proactive approach to programme management within a time-critical education environment.

# THE GALLERY



## CONTACT US



office@rwbbuild.co.uk



0330 122 1883



www.rwbbuild.co.uk



Unit 3 Mile Stone Court,  
Pudsey, LS28 6HE

