

THE GLASS RACKING COMPANY

Innovation by Design

WINDOW TRANSPORTATION SYSTEM



The Glass Racking Company has designed an innovative total solution to meet the needs of customers wishing to transport window frames on trolleys, transport frames, trucks, trailers, vans, utes, demountable frames and other structures. This solution is available as a complete turnkey solution, and also as a very cost effective upgrade to the most common existing systems.

GET FULL PRODUCT CATALOGUES ONLINE AT
WWW.THEGLASSRACKINGCOMPANY.COM

THE COMPONENTS

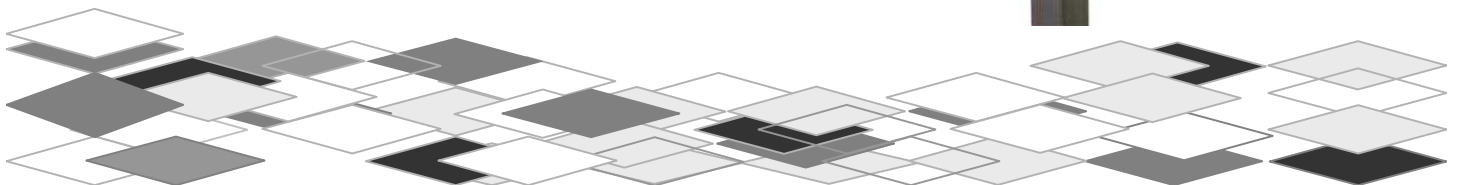
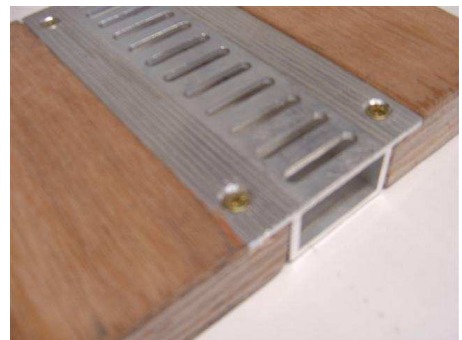
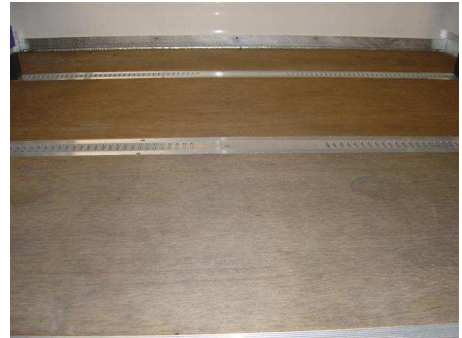
Polymer bearing surface. This surface has been developed specifically for carrying glass and window frames. It is non-marking, soft, grips the product, and is very hard wearing. The polymer slots into aluminium and steel sections and becomes integral to the structure, or is mono-bolted onto existing structures.

Timber deck. This is a 29mm thick hardwood container ply deck that provides a durable surface for the base of the transportation system. The deck is machined so that the slotted base fits under the surface of the timber deck to avoid the frames touching the hard surface of the aluminium slotted base.

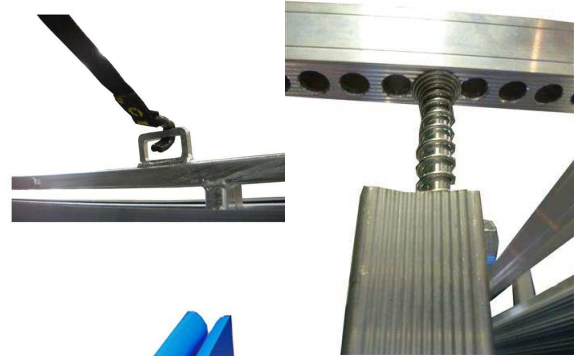
The slotted base is used to secure the bottom of the strap pole to the deck. The slotted base provides multiple pole location options, which is key to securing the load.

The strap pole has a tongue at the bottom of the pole which is used to locate and secure the bottom of the pole into the slotted base.

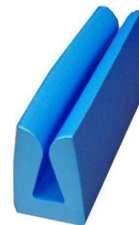
The top of the strap pole has a hook and strap with locking mechanism. The hook secures the top of the pole to the structure, and the strap is pulled to provide pressure from the pole onto the load, and through the load onto the structure. The locking mechanism secures the pole



The top cleat is part of the structure and allows the hook on the strap pole to easily connect to the structure. For hardtop vehicles a pin top pole and locator is used.



The copolymer foam sheathing on the pole is 20mm thick on each side and provides compression when under pressure, assisting the strap pole to secure the load.

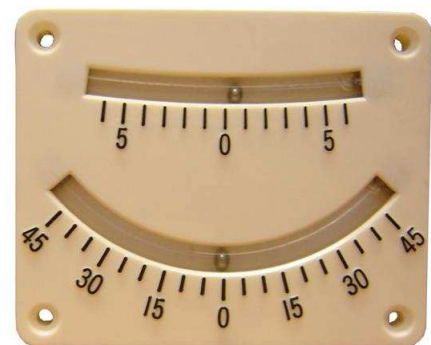


The Profoams between the window frames provide a soft protective layer between each window frame, and also a level of compression which aids with securing the load and reduces movement when in transit.



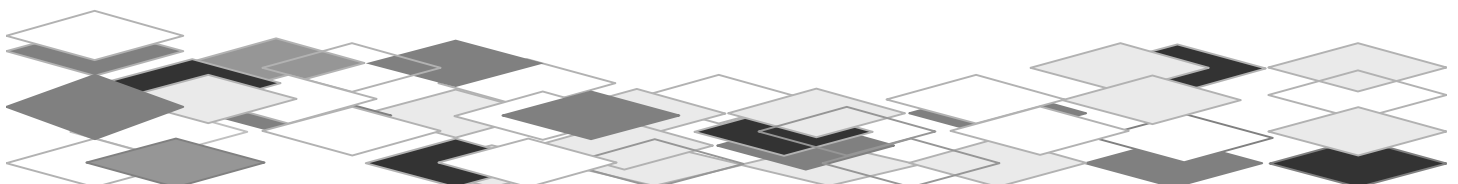
Additional securing is provided with traditional straps and ropes. The two systems are complimentary, and a strap wrapping the entire load should be included for collision retention.

An inclinometer provides the users with a view and measurement of the inclination of the structure and load prior to unloading to ensure safety.



THE LOAD PROCESS

The users load the window frames onto the structure placing the ProFoams between each frame. Poles are inserted into the bottom slotted base, hooked on the cleat at the top, and the strap tightened against the outside window frame, compressing the ProFoams through the width of the load. The load is now secure. A safety stop is then placed around the entire load.





BENEFITS OF THIS SYSTEM

1. Experienced users have found that the combination of poles and straps is quicker to load and unload, saving time in the factory and onsite.
2. The window frames are not exposed to any hard surfaces, and hence damage through transit rub is minimised.
3. The strap poles secure the load directly through the load, not at an angle as with many rope and strap solutions. This reduces movement and hence damage to window frames while in transit.
4. The multiple copolymer bearing and compression surfaces mean that each item is secured against the next to reduce movement in transit.
5. A strap pole can be located within a load, such as between layers of large window frames and small window frames, so that the outer small window frames have a soft bearing surface of the back of the strap pole rather than “falling into” the larger frame. Additional strap poles secure the outside of the load, through the inner strap poles, to the structure.
6. The ProFoams assist with separating frames that have protruding mullions or fins.
7. The ProFoams are moulded around the reveal shape and less likely to move or “fly out” while in transit.
8. All components are weatherproof, waterproof, UV resistant, and non-marking.
9. The solution provides a professional image for your staff, and to your customers.

Window Transportation Systems

Contact us today to discuss your glass and window transportation needs.

HOW TO PURCHASE

Contact your local representative in Christchurch, Melbourne, Brisbane or Perth.

Window Transport
Aug 2011



The Glass Racking Company

Christchurch:- 03-3603373, Melbourne:- 0427226653, Brisbane:- 0419714005, Perth:- 0449911946

Email: info@theglassrackingcompany.com www.theglassrackingcompany.com

